

Field Book #77

11

FIELD BOOK

NO. 403

23 9401



EUGENE DIETZGEN CO.,
 Drawing Materials and Surveying Instrument
 NEW YORK. CHICAGO. SAN FRANCISCO.

TABLES FOR EXCAVATIONS AND EMBANKMENTS
 DISTANCES FROM CENTER OF ROADWAY FOR CROSS-SECTION
 ROADWAY 20 FEET WIDE. SIDE SLOPES 1 TO 1.
 FOR SINGLE TRACK EXCAVATION.

Copyright, 1902. No. 3934a.

	0	.1	.2	.3	.4	.5	.6	.7	.8	.9
0	10.0	10.1	10.2	10.3	10.4	10.5	10.6	10.7	10.8	10.9
1	11.0	11.1	11.2	11.3	11.4	11.5	11.6	11.7	11.8	11.9
2	12.0	12.1	12.2	12.3	12.4	12.5	12.6	12.7	12.8	12.9
3	13.0	13.1	13.2	13.3	13.4	13.5	13.6	13.7	13.8	13.9
4	14.0	14.1	14.2	14.3	14.4	14.5	14.6	14.7	14.8	14.9
5	15.0	15.1	15.2	15.3	15.4	15.5	15.6	15.7	15.8	15.9
6	16.0	16.1	16.2	16.3	16.4	16.5	16.6	16.7	16.8	16.9
7	17.0	17.1	17.2	17.3	17.4	17.5	17.6	17.7	17.8	17.9
8	18.0	18.1	18.2	18.3	18.4	18.5	18.6	18.7	18.8	18.9
9	19.0	19.1	19.2	19.3	19.4	19.5	19.6	19.7	19.8	19.9
10	20.0	20.1	20.2	20.3	20.4	20.5	20.6	20.7	20.8	20.9
11	21.0	21.1	21.2	21.3	21.4	21.5	21.6	21.7	21.8	21.9
12	22.0	22.1	22.2	22.3	22.4	22.5	22.6	22.7	22.8	22.9
13	23.0	23.1	23.2	23.3	23.4	23.5	23.6	23.7	23.8	23.9
14	24.0	24.1	24.2	24.3	24.4	24.5	24.6	24.7	24.8	24.9
15	25.0	25.1	25.2	25.3	25.4	25.5	25.6	25.7	25.8	25.9
16	26.0	26.1	26.2	26.3	26.4	26.5	26.6	26.7	26.8	26.9
17	27.0	27.1	27.2	27.3	27.4	27.5	27.6	27.7	27.8	27.9
18	28.0	28.1	28.2	28.3	28.4	28.5	28.6	28.7	28.8	28.9
19	29.0	29.1	29.2	29.3	29.4	29.5	29.6	29.7	29.8	29.9
20	30.0	30.1	30.2	30.3	30.4	30.5	30.6	30.7	30.8	30.9
21	31.0	31.1	31.2	31.3	31.4	31.5	31.6	31.7	31.8	31.9
22	32.0	32.1	32.2	32.3	32.4	32.5	32.6	32.7	32.8	32.9
23	33.0	33.1	33.2	33.3	33.4	33.5	33.6	33.7	33.8	33.9
24	34.0	34.1	34.2	34.3	34.4	34.5	34.6	34.7	34.8	34.9
25	35.0	35.1	35.2	35.3	35.4	35.5	35.6	35.7	35.8	35.9
26	36.0	36.1	36.2	36.3	36.4	36.5	36.6	36.7	36.8	36.9
27	37.0	37.1	37.2	37.3	37.4	37.5	37.6	37.7	37.8	37.9
28	38.0	38.1	38.2	38.3	38.4	38.5	38.6	38.7	38.8	38.9
29	39.0	39.1	39.2	39.3	39.4	39.5	39.6	39.7	39.8	39.9
30	40.0	40.1	40.2	40.3	40.4	40.5	40.6	40.7	40.8	40.9
31	41.0	41.1	41.2	41.3	41.4	41.5	41.6	41.7	41.8	41.9
32	42.0	42.1	42.2	42.3	42.4	42.5	42.6	42.7	42.8	42.9
33	43.0	43.1	43.2	43.3	43.4	43.5	43.6	43.7	43.8	43.9
34	44.0	44.1	44.2	44.3	44.4	44.5	44.6	44.7	44.8	44.9
35	45.0	45.1	45.2	45.3	45.4	45.5	45.6	45.7	45.8	45.9
36	46.0	46.1	46.2	46.3	46.4	46.5	46.6	46.7	46.8	46.9
37	47.0	47.1	47.2	47.3	47.4	47.5	47.6	47.7	47.8	47.9
38	48.0	48.1	48.2	48.3	48.4	48.5	48.6	48.7	48.8	48.9
39	49.0	49.1	49.2	49.3	49.4	49.5	49.6	49.7	49.8	49.9
40	50.0	50.1	50.2	50.3	50.4	50.5	50.6	50.7	50.8	50.9

Calculated by F. E. Parviller

89/00

INDEX

~~J.N. Crouch Place X1-2~~
~~Plat I-Sub-Div. X3~~
~~Cl-41-T255 R 4W. X435-6-7-8-9~~
~~Cl-49-T255 R 4W X10-11-78~~
~~Plat "I" X12-13-14-15-16-17~~
~~Plat "E" Canal ^(Starting at E. Bound of To washt) X8-19-20-21~~
~~Evans & Archambau X22-23-24~~
~~Brown Ranch X25-~~
~~Vander Kloets New Tract X79~~

Sta Dist. A.P. A.L. C.S. M.C.

Δ 5 85.39
 1049.9 + 9 = 1058.9

Δ 1 1213.1 1212.5 9000

Δ 4 1057.2 9000 854.5"

Δ 3 1111.1 880.45"

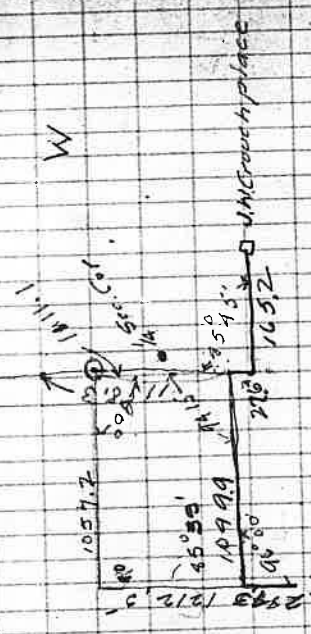
Tie 137.5 9906' 2054W 520

Δ 2 27.6 92.29'

Δ 1 1849.9 1049.9 96'00

Asa tree 336.4 To hub

0+00 558'E



Cl. A Full sketch on next page

N.W. Evans place S.W. Whitcomb & 1652
 585°00' M.C.

32' N 90°00'E back line at Δ 2
 585°00' W

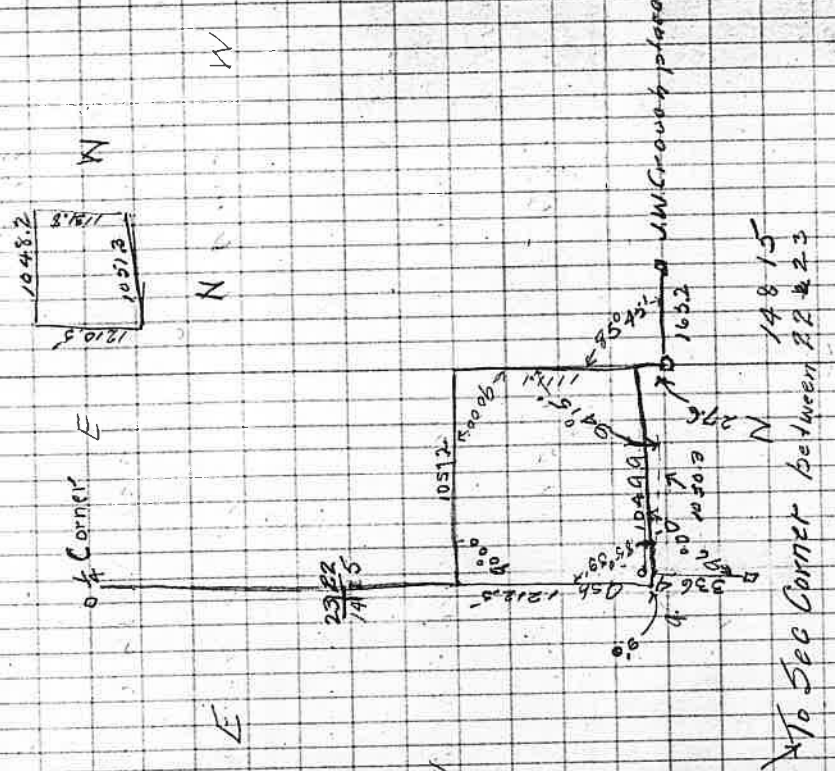
Angle 93°32' Δ 1
 889.3
 537.9 to tree

558'E

Random Line for Corner

Sta.	Dist.	Δ R.	Δ L	C.C.	M.G.
53+178	277.8	8'00"	0°00'	59°01'E	59°10'E
50+40.0	96.1	4'30"	0°00'	50°41'N	50°50'W
19+43.9	275.9	0'00"	6°04'	53°49'E	59°42'E
46+68.0	153.2	0'00"	0°00'	53°49'E	58°40'E
45+14.8	451.8	0'30L	0°00'	52°15'W	52°15'W
40+63.0	377.9	2'00'	0°00'	51°45'N	51°40'W
36+85.1	229.6	0'12L	0°00'	50°15'E	50°10'E
34+55.5	675.6	3'05'	0°00'	50°25'E	50°25'E
29+79.9	171.1	4'03'	0°00'	53°30'E	53°30'E
2598.8				South 33'W	58°33'W
2117.9				South	50°30'W
11+11.1					

S.



Sta. DIST. A.R. ΔL C.C. M.C.

Cor 4 Hub in Iron pipe from which
6" Oak bears N10°55'W 75.5'
and 10" Oak " 587°50'E 259.2

Cor 30 Iron pipe from which 16" Oak
bears 59°45'E 79.1'
and 40" Fir bears N38°50'E 46.0'
with hub in top

Cor 2. Iron pipe from which a 40" Fir
bears N60°12'W 190.0'
and 20" Fir bears 56°55'E 62.7

Cor I. Iron pipe in roots of squared 8" Fir from
which 12" Fir bears N 28°20'W 27.4
and 12" Fir bears 548°40'W 19.6

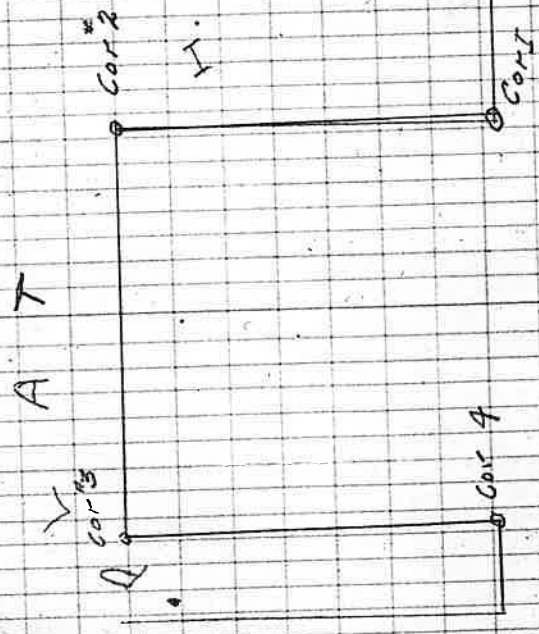
5433.85
33.5 E

0 roll 145.0

547612

17°46'

58°45W 58° 30E



To quarter post established from
old witness trees from Govt Notes

Worstell
Billings
Flood
Calkx
Austin
Cooper

Worstell
Fice
Gilley
Cornett
Cooper

continued on page #8

4 W

Variation 20'30"

June 17, 1910

June 8, 1910

continued on page 8

Claim #41

T-25-S-17

Dist ΔL ΔR C.C. M.C.

M.C.

Variation 20'30"

11°24' 579'12"E 579 25'

0°54' N89°24'E N89 2 3/4"E

1°30' N58°30"E

4+03.5 East East

151.3 587°04'E 587 10 E

425.2 4°26' 0°00' 0°00'

1°30' East East

66°59' 523°01'E 523 0 5/8"E

22°24' 50°37'E

28+66.2 50°37'E 50 35 E

20+95.8 50°37'E 50 40 E

19+17.7

S.W. 1/4

Reference for Corner

26+88 S 49 1/2 W

Gross on Acker S.W. Cor

47+56 Cor. 549 45 W

(Found old
B/S to 19
Description)

Sta	Dist	AL	AR	C.C.	MC
			Tangent		
16+388			Tangent		
15+398			Tangent		
12+79.6			Tangent		
10+198	0.31'		0.32'		
8+854			Tangent		
7+740			1.01'		
4+374	1.04'				
8+612			Tangent		
1+570	17.07				
$\frac{1}{4}$ Cor 889			19.19'		
25+495			Tangent		
23+574					

Set up on 23+574 B.S. 22+527

Sta Dist Δ Δ Δ Δ MG

12° 54'
 11 44
 23 98
 652
 5857
 64109

18° 54'

6° 52'

11° 44'

58° 54'

81° 22' B

2+63.1

Sec. Cor 8/9

4+02.3

Tangent

2+63.1

42° 44'

Sec. Cor

15° 55'

25+85.0

Tangent off a half
 0.29'

24+41.4

21+86.9

Tangent

20+49.9

0° 31'

19+01.5

Went back to Sec. Cor. 8/9 took B.S.
 off 2+63.1 started S.W. for
 Cor. above Quarry

8/9
 16/117

Sta Dist ΔL ΔR C.G.

5+65.0

Hub

Tolor

Δ9

Δ8

Δ7

Δ6

Δ5

Tangent

39°07'

5°54'

4°17'

5°08'

30°22'

6°34'

4°10'

39 07
 39 22
 69 29
 23 98
 9 2 127

5 54
 4 17
 5 28
 6 34
 7 10
 27 143
 64 109
 9 2 199
 9 2 1 27
 9 2 1 65

N 1°14' W
 S 1°14' E
 1°05'
 09'E
 92 15 24
 S 114'E
 105
 09'E
 18 1 22 E S
 17 E



Worstell Transit
 Caley Chainmen
 Austria
 Billings Bremen
 Cooper Teamster

June 18, 1910

V.A. 3599

Back 10.10.30
 paper

Reverse on North Boundary

N.E. Cor. C1 #41
 290
 580
 4110

Old, reestablished
 from B.T. found
 piece of original
 45 + 39.1

N.W. Cor. C1 #41 Stone
 STA. 46 + 83.1 3.8 East of Fence Corner

To old S.E. Cor. C1 #41 reestablished
 from B.T. 5

C1 #41 T-25-S-R 4 W.

Dist ΔL ΔR C.C. M.G.

Sta.

58+37.1	= 20 + 44.9	on Strongs	T-25-S-R 4 W.	589° 05' W	589° 05' W	00' 00"					
21+04.1				582° 53' W	582° 53' W	88° 00' W	6° 12'				
20+41.0				West	589° 50' W		7° 07'				
46+83.1							90° 00'				
45+31.1							0° 00'	0° 00'			
17+62.6	647.9			North	N 0° 10' W						
11+30.9	461.2			North	N 0° 10' W		0° 19'				
6+75.2	647.9						0° 19'				
119+57.1							100° 48'				

3.55 West

0+00
 quad North

10/10

C149 T-25-S, RR-7-W
Dist 46 48 CC M.C.

Sta

W = 34° E of S.W. Cor.

copied from book * 8 page 60

0+00	West	N 89° 55' W			
17+26.2		N 89° 41' W	589° 50' W		
20+380	East	N 89° 53' W			
21+22.5		N 89° 57' W	N 89° 52' W		
26+10.4		N 89° 57' W		14° 41'	
31+52.3		S 75° 16' W	50° 50' W		
34+05.4		S 85° 00' W	58° 45' W		
31+17.2		S 88° 47' W	58° 5' W		
29+78.6		N 89° 21' W	N 89° 35' W	1° 01'	
0+21.3		S 89° 35' W	N 50° 05' W	00° 25'	

From page 11

Continued on page 10

G 49 F 25 S, R 4 W

Sta. Dist AL AR CC MC

Neel 50026

511°51' E 50026

500152 E 50025

51°25' N 51°40' W

South 50025

East: 1189°30'

North North

N 89°00' E N 89°05'

East East

1°39' S 89°30' E S 89°

111°54' N 88°51' E N 88°

N 23°30' W North

1062.6

11 11

True corner re established from BT.
Sta. C 149

Rocky point
N.E. Cor could not be found

N.W. Cor J B 73 True corner Not Found.

True corner Not Found.

True corner Not Found.

True corner Not Found.

True corner Not Found.

True corner Not Found.

True corner Not Found.

True corner Not Found.

True corner Not Found.

True corner Not Found.

True corner Not Found.

True corner Not Found.

True corner Not Found.

696

696

696

696

696

N.E. Randcorn

Sta. C 141 Sec page 61

Sta. C 141

Austin - Transit 12
 Billings } Flagman 12
 Fleeced }
 checking south line of Plat I.

July 6 1910

Sta. Dist. ΔL ΔB MC

66+542		3° 18'	89° 10'
62+63.6	3 19'		85° 50'
61+65.3	0 3'		89° 25'
47+61.8		0° 3'	S. 89° 30' W
45+55.5	0 4'		S. 89° 27' W
37+54.3	0 1'		
33+25.7	0° 2'		
32+30.8	0° 1'		
17+31.9	00° 2'		
			5.89.29 W
11+40.5	0° 1'		5.89.30 W
4+66.6	to Hub		
0+00	int angle 88° 51'		

Traverse of Creek

Taylor Place

Sta Dist Ah AT C.C. M.S.

Not Sta 788

36+84.2

34+30.3

21+11.8

18+47.7

13+70.2

10+40.6

2+96.6

0+00

44+20.2

245.7

248.9

1323.5

264.1

477.5

329.6

744.3

296.6

9°53'

15°33'

45°18'

31°58'

4°15''

10°28'

46°37'

31°43' E

N59°15'W

N64°50'W N63°

N49°55'W N47°15'W

S85°17'W S86°05'W

N62°45'W N63°05'W

N67°00'W N67°10'W

N77°28'W N77°10'W

N305°14'W N310°5'W

N305°14'W

N00°08'W

36+84.299. 407.88 PLATE

34+84.2

30°43'

44+20.2 W 13 d/4

Back by TRAVELER, Random Line

Timber Line from South Bidy
 Owen Sutherland Place.
 Sta. Dist AB AF C.C. M.C.

TN Plat "I"

AZ.
 Sta. 1.0

{ Sta. 13 (11+27.3) Gopher }
 { Sta. 11 (9+31.3) Strong }

{ 9+73.7 }

4+92.5

3+469

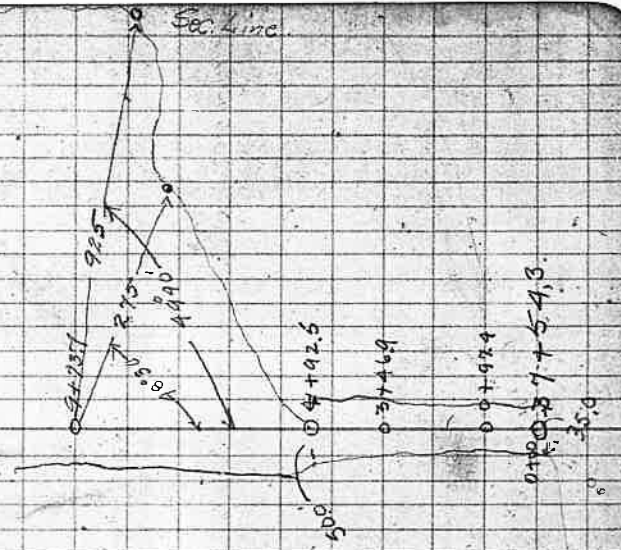
00+974

0+100

37+54.3

South Boundary

103°04'	N 65°10' E	N 65°00' E
481.2	N 38°10' W	N 38°10' W
145.6	N 37°54' W	N 38°20' W
249.5	N 8°03' W	N 8°20' W
974	N 32°21' W	N 32°30' W
	N 35°25' W	N 35°25' W
	N 35°20' W	N 35°20' W
	N 89°35' W	N 89°35' W

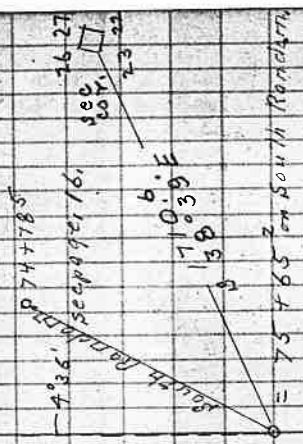


Taylor, Eubanks & O. Sutherland
Boundary Random Lines
North & West Sides.

correct field work.

Plot "I"

Sta. Dist ΔL. ΔR. C.C. Misc.



72+169									
70+55.3	1° 36'				S 2° 03' E				
68+47.2	00° 03'				S 0° 27' E				
46+56.3		2° 03'			S 0° 24' E				
45+62.5	4° 54'			3° 38'	S 2° 27' W				
42+70					S 1° 11' E				
38+95.7	00° 56'			00° 07'	S 0° 15' E				
21+86.3					S 0° 22' E				
0+15 = on boundary	90° 01'			00° 31'	S 89° 39' W				
11+74.8					S 89° 08' W				
15+96.0	90° 27'			81° 00'	N 0° 25' W				
N.W. cor. Plot I					N 81° 25' W				
"	22° 50'				N 58° 35' W				
"	21° 30'				N 37° 05' W				
Δ in Plot I	36° 40'				N 0° 25' W				
S.W. cor. Plot I				90° 30'	S 89° 05' W				
S.E. cor. Plot I				89° 24'	S 0° 19' E				
Δ in Plot I									
N.W. cor. Taylor place	90° 32'								
1876.2									
0+00 = top on Beasley Boundary									
									N 89° 47' W

Crouch Traverse NW cor. C.I. 41 to Rancher post =
Scatter line on this traverse 11+74.8 to 0+15.4
(N 89° 39' W)

See Tie on Page 16

Worstell,
 Galey,
 McCallister,
 Moore,
 Freudig.

Traverse of Ditch (continued from page 18)

Sta.	Dist	Δ L	Δ R	C.C.	MC
Δ 23	290.7	77°07"		55°49'44" W	256°30' N
Δ 22	133.7		68°25'	N45°09' W	N96°30' W
A 21	223.4		15°49'	566°26' W	365°90' W
Δ 20	187.1		5°24'	550°57' W	549°10' W
Δ 19	304.3		9°11'	247°05' W	243°30' W
Δ 18	439.2		27°56'	538°02' W	236°36' W
A 17	279.7	18°38'		210°06' W	211°00' W
Δ 16	205.4		6°57'	529°44' W	527°00' W
A 15	170.8	67°39'		521°49' W	241°45' W
Δ 14	306.4		7°18'	589°25' W	287°35' W
A 13	148.9	19°31'	74'	582°08' W	591°30' W
Δ 12	103.8		45°33'	N78°21' W	N90°00' W
				528°06' W	

A 17 20' South to County Road

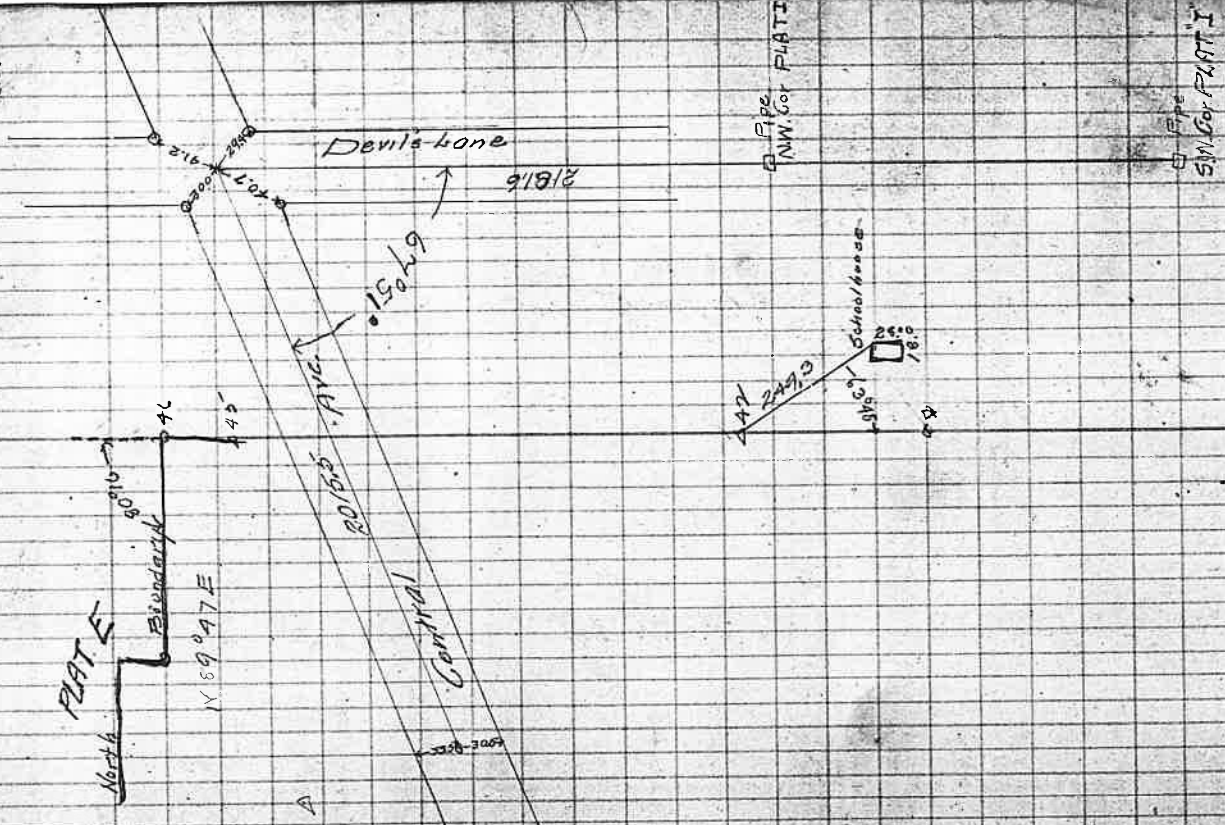
A 15 Centre Arch Spillway & Siphon

Δ 14 - Centre of Concrete Arch Inside of Inverted Siphon



Traverse of Ditch (continued.)

Sta.	Dist	AL	Δ R	CC	MC
Δ 35	102.9	130°37'		51°00' ±	58°10' ±
Δ 34	169.6		00 01	N50°23' W	N51°15' W
Δ 33	119.7		19°25'	N50°24' W	N51°15' W
Δ 22	136.8		37°45'	N64°49' W	N70°35' W
Δ 31	197.2	271°14'		57°22' W	57°55' W
Δ 30	292.2		40°20'	N80°20' W	N81°25' W
Δ 29	202.5		00°35'	N84°40' W	N85°30' W
Δ 28	207.4		31°20'	N85°15' W	N87°00' W
Δ 27	523.2	34°59'		563°25' W	562°00' W
Δ 26	125.8	=	45°24'	N81°36' W	N82°15' W
Δ 25	236.5		24°27'	555°00' W	551°30' W
Δ 24	196.4	29°11'		508°33' W	52°50' W
				557°24' W	

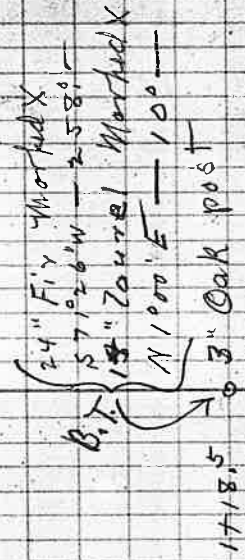
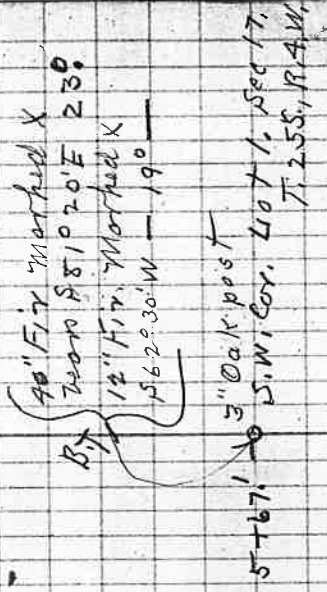


Traverse of Ditches

Sta.	Dist.	Δ L	Δ F	C.C.	M.C.
Δ 47	Center of Concrete aligned of Flashes N.W. Corner PLAT E				
Δ 46	31.3		4942'	55° 5' E	57000'
Δ 45	98.4	3034'		59° 57' E	51050'
Δ 44	222.5		0' 20"	52° 03' W	51945' W
Δ 43	348.8		11° 50'	52° 01' W	51935' W
Δ 42	240.0			58° 27' W	5655' W
Δ 41	172.8	8093'		58° 40' W	56700' W
Δ 40	131.9	8778'		N 4° 02' W	N 5° 25' W
Δ 39	304.5		56° 52'	N 60° 54' W	N 61° 50' W
Δ 38	309.0		4797'	571° 47' W	56935' W
Δ 37	233.5		2621'	59° 56' W	54351' W
Δ 36	116.1		1936'	525° 20' W	52100' W
			2620'	5120' E	

Evans & Archambau Corners.

Sta. Hist. Δ L. Δ R. c. c. m. c.



Sept. 20th, 10
Richardson
Ruffin
Waste
Bryce

S.W. Cor. 5+67.

4+85.0

201.

2+83.9

283.9

1+185.1 m. cor.

60.

0+57.8

57.8

S.W. Cor. 2/1, 4/1, = 0.0

S 0° 30' E 50.0'

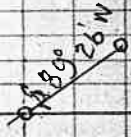
90° 00'

0° 04'

S 89° 30' W

S 89° 26' W

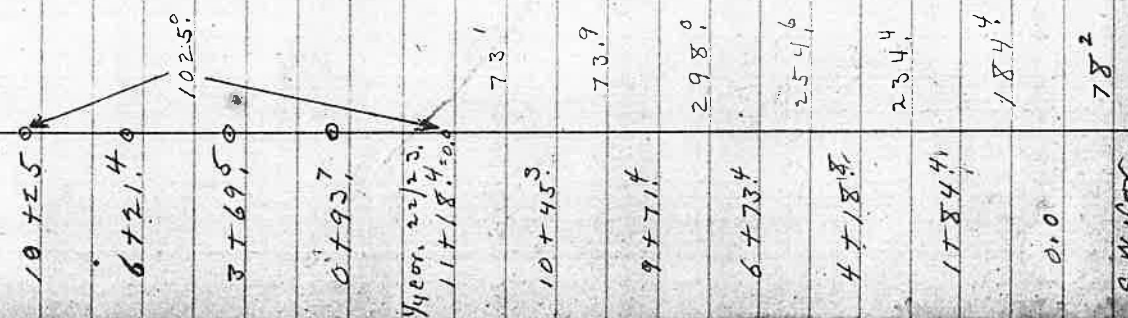
0° 04'



NS 79 2-139 E of Cor. =

Evans & Archam Beach
South boundary.

Sta. Dist A.L. A.T. C.C. M.L.

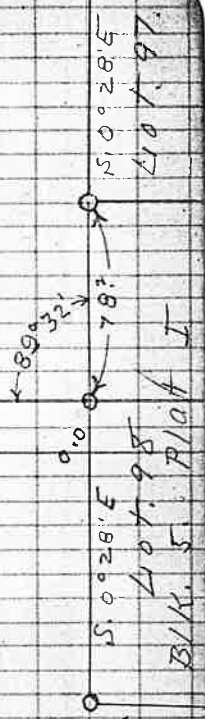


set 4" Laurel.

1/4 Oct. 22/23
7:55 A.M. 3" Oak post
12" W. O. brass N. 2 1/4 ft.

Oct 7th 1910

Cloudy
Richardson
West Jak.
B. Trace
McHoy
Moore - Team



S.W. Cor.
40+97.

Archaettau
West Line.

Sta. Dist. Δ L. Δ R. c.c.

672.14 From East

10725 From East

99'

124.7

1330

992

221.5

4690.3

Stamp. W. Flag

a.o

5684

N. 74° E

S 85° 20' W

N 89° 54' E

12°-40' S 11° 56' W

Deck. 6th 1910
Strong
Gilkey
3 hrs.

672.14 See page 23.

4" Laurel post

10725 From East (See page)

VA (2° 48' 100) + 8.9

(VA 2490' 100) + 33.5

1330

991

2218

111.45

000

000

000

000

810.5 NW. Cox. Base Archaettau

585020W ON E. Cox. Archaettau

Brown, R.A.C.H.

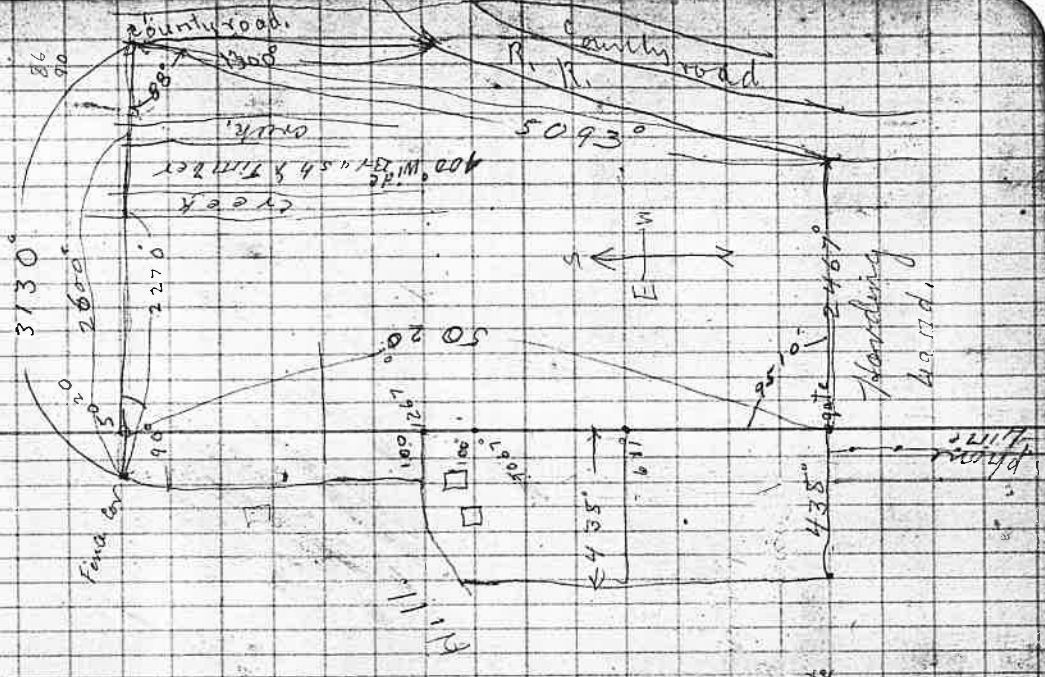
East of Miami Ford place.

Sta. Dist. A.L. R.R.

inc.

May 19th 1910

Starting
Pie
Wells
Further found
cloudy



35th west
of home line

246.7

84.50
R.R.

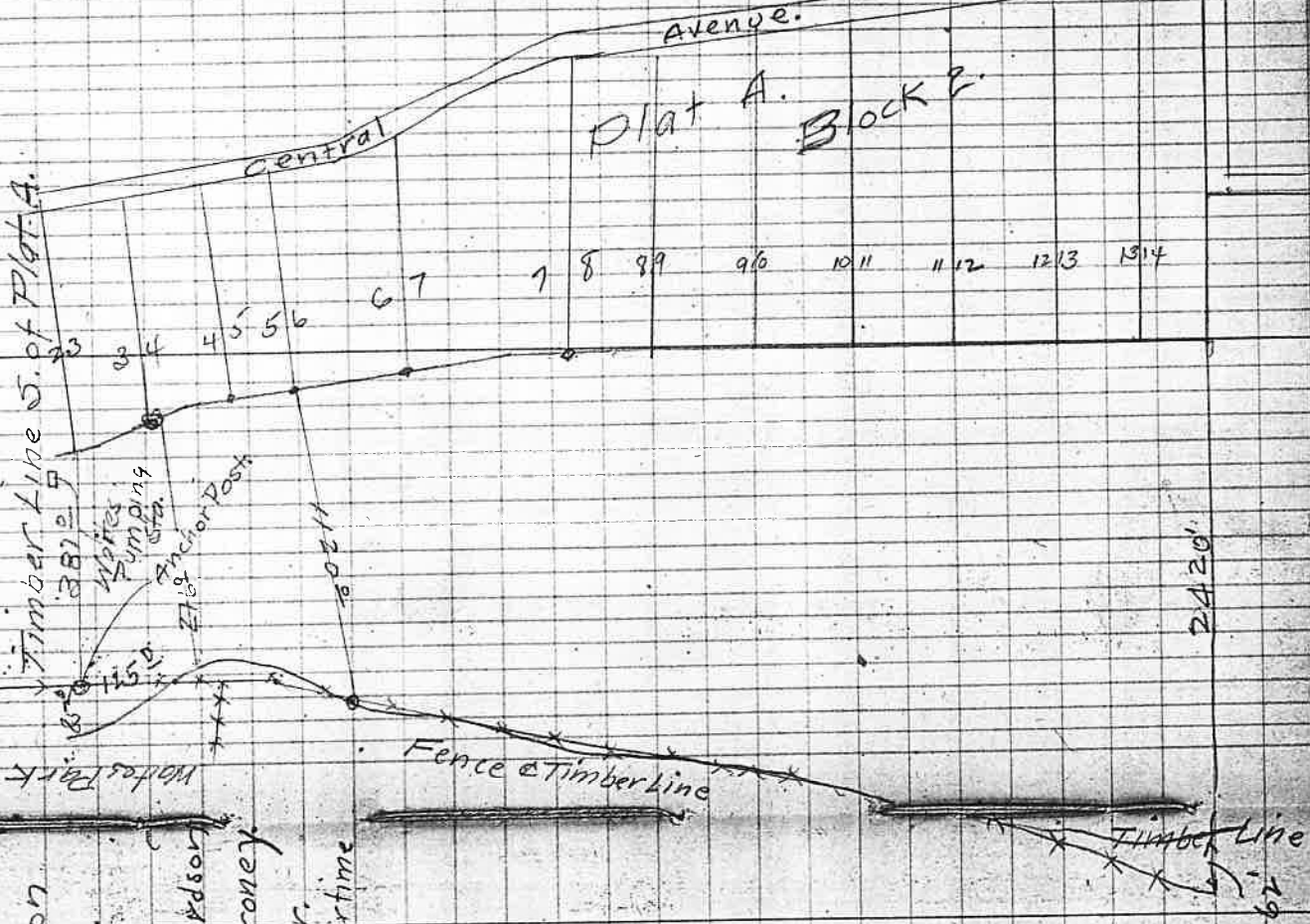
84.50 East past gate

180.30

Location of Timber Line on
Walt's Land S of Plat A.

Jan. 16, dt.

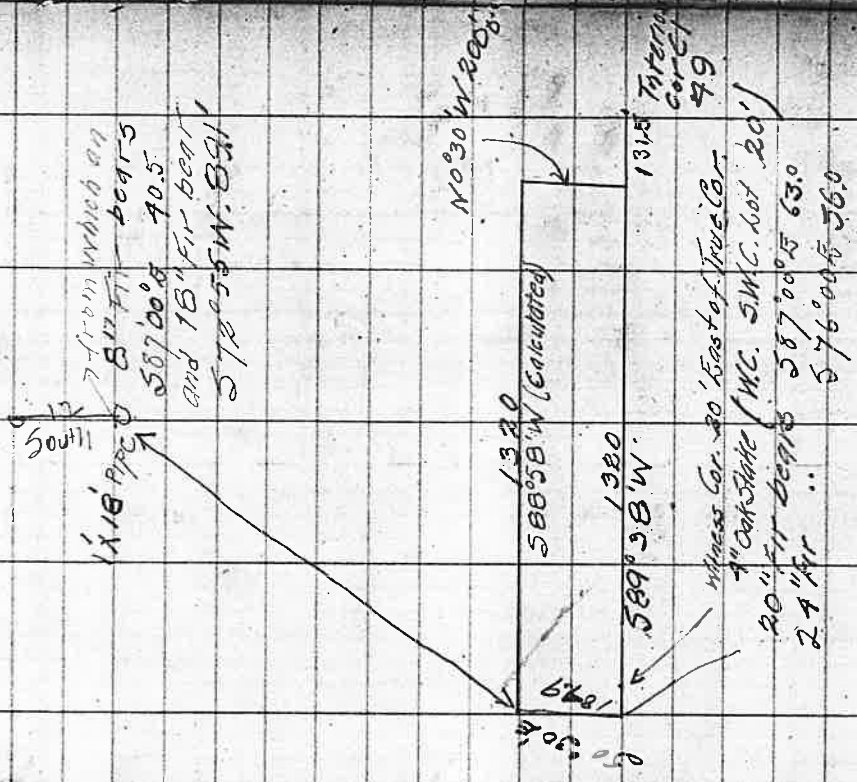
Richardson
B. Maroney
1 hr.
overtime



Field Book No. 77

Pages 27 -77 Blank

B.T. for N.W. Cor. lot
 North of C149 T25S R4W



NOV 28 1910
 Strong
 Worstell
 Alster
 Billings } 10 hours
 Conradt Part of
 Cooper
 Pater's time
 Rootabush
 Cart on Calapodia
 land

Vanderkloofs New Tract

N.W. Cor = Iron pipe
 from which 18" Oak bears S39°35'E 23.5'
 and 20 Laurel bears N32°50'E

N.E. Cor = Cross in Bedrock
 from which 36" Oak bears S26°55'E 45.0'
 and 36" Oak bears N44°00'E 15.9'

[Faint handwritten notes, possibly bleed-through from the reverse side]

90133
330.5
330.5
383.5

TABLE IV. --- MINUTES IN DECIMALS OF A DEGREE

1'	0.0167	11'	1833	21'	3300	31'	5167	41'	6833	51'	8500
2	0.0333	12	2000	22	3467	32	5333	42	7000	52	8667
3	0.0500	13	2167	23	3633	33	5500	43	7167	53	8833
4	0.0667	14	2333	24	4000	34	5667	44	7333	54	9000
5	0.0833	15	2500	25	4167	35	5833	45	7500	55	9167
6	0.1000	16	2667	26	4333	36	6000	46	7667	56	9333
7	0.1167	17	2833	27	4500	37	6167	47	7833	57	9500
8	0.1333	18	3000	28	4667	38	6333	48	8000	58	9667
9	0.1500	19	3167	29	4833	39	6500	49	8167	59	9833
10	0.1667	20	3333	30	5000	40	6667	50	8333	60	10000

TABLE V. --- INCHES IN DECIMALS OF A FOOT.

1/16"	0.0625	3/16"	0.1875	5/16"	0.3125	7/16"	0.4375	9/16"	0.5625	11/16"	0.6875
1/8"	0.1250	1/4"	0.2500	3/8"	0.3750	1/2"	0.5000	5/8"	0.6250	3/4"	0.7500
1/4"	0.2500	3/8"	0.3750	1/2"	0.5000	5/8"	0.6250	3/4"	0.7500	7/8"	0.8750
1/2"	0.5000	5/8"	0.6250	3/4"	0.7500	7/8"	0.8750	1"	1.0000	1 1/8"	1.1250
5/8"	0.6250	3/4"	0.7500	7/8"	0.8750	1"	1.0000	1 1/8"	1.1250	1 1/4"	1.2500
3/4"	0.7500	7/8"	0.8750	1"	1.0000	1 1/8"	1.1250	1 1/4"	1.2500	1 3/8"	1.3750
7/8"	0.8750	1"	1.0000	1 1/8"	1.1250	1 1/4"	1.2500	1 3/8"	1.3750	1 1/2"	1.5000
1"	1.0000	1 1/8"	1.1250	1 1/4"	1.2500	1 3/8"	1.3750	1 1/2"	1.5000	1 5/8"	1.6250
1 1/8"	1.1250	1 1/4"	1.2500	1 3/8"	1.3750	1 1/2"	1.5000	1 5/8"	1.6250	1 3/4"	1.7500
1 1/4"	1.2500	1 3/8"	1.3750	1 1/2"	1.5000	1 5/8"	1.6250	1 3/4"	1.7500	1 7/8"	1.8750
1 3/8"	1.3750	1 1/2"	1.5000	1 5/8"	1.6250	1 3/4"	1.7500	1 7/8"	1.8750	2"	2.0000
1 1/2"	1.5000	1 5/8"	1.6250	1 3/4"	1.7500	1 7/8"	1.8750	2"	2.0000	2 1/8"	2.1250
1 5/8"	1.6250	1 3/4"	1.7500	1 7/8"	1.8750	2"	2.0000	2 1/8"	2.1250	2 1/4"	2.2500
1 3/4"	1.7500	1 7/8"	1.8750	2"	2.0000	2 1/8"	2.1250	2 1/4"	2.2500	2 3/8"	2.3750
1 7/8"	1.8750	2"	2.0000	2 1/8"	2.1250	2 1/4"	2.2500	2 3/8"	2.3750	2 1/2"	2.5000
2"	2.0000	2 1/8"	2.1250	2 1/4"	2.2500	2 3/8"	2.3750	2 1/2"	2.5000	2 5/8"	2.6250
2 1/8"	2.1250	2 1/4"	2.2500	2 3/8"	2.3750	2 1/2"	2.5000	2 5/8"	2.6250	2 3/4"	2.7500
2 1/4"	2.2500	2 3/8"	2.3750	2 1/2"	2.5000	2 5/8"	2.6250	2 3/4"	2.7500	2 7/8"	2.8750
2 3/8"	2.3750	2 1/2"	2.5000	2 5/8"	2.6250	2 3/4"	2.7500	2 7/8"	2.8750	3"	3.0000
2 1/2"	2.5000	2 5/8"	2.6250	2 3/4"	2.7500	2 7/8"	2.8750	3"	3.0000	3 1/8"	3.1250
2 5/8"	2.6250	2 3/4"	2.7500	2 7/8"	2.8750	3"	3.0000	3 1/8"	3.1250	3 1/4"	3.2500
2 3/4"	2.7500	2 7/8"	2.8750	3"	3.0000	3 1/8"	3.1250	3 1/4"	3.2500	3 3/8"	3.3750
2 7/8"	2.8750	3"	3.0000	3 1/8"	3.1250	3 1/4"	3.2500	3 3/8"	3.3750	3 1/2"	3.5000
3"	3.0000	3 1/8"	3.1250	3 1/4"	3.2500	3 3/8"	3.3750	3 1/2"	3.5000	3 5/8"	3.6250
3 1/8"	3.1250	3 1/4"	3.2500	3 3/8"	3.3750	3 1/2"	3.5000	3 5/8"	3.6250	3 3/4"	3.7500
3 1/4"	3.2500	3 3/8"	3.3750	3 1/2"	3.5000	3 5/8"	3.6250	3 3/4"	3.7500	3 7/8"	3.8750
3 3/8"	3.3750	3 1/2"	3.5000	3 5/8"	3.6250	3 3/4"	3.7500	3 7/8"	3.8750	4"	4.0000
3 1/2"	3.5000	3 5/8"	3.6250	3 3/4"	3.7500	3 7/8"	3.8750	4"	4.0000	4 1/8"	4.1250
3 5/8"	3.6250	3 3/4"	3.7500	3 7/8"	3.8750	4"	4.0000	4 1/8"	4.1250	4 1/4"	4.2500
3 3/4"	3.7500	3 7/8"	3.8750	4"	4.0000	4 1/8"	4.1250	4 1/4"	4.2500	4 3/8"	4.3750
3 7/8"	3.8750	4"	4.0000	4 1/8"	4.1250	4 1/4"	4.2500	4 3/8"	4.3750	4 1/2"	4.5000
4"	4.0000	4 1/8"	4.1250	4 1/4"	4.2500	4 3/8"	4.3750	4 1/2"	4.5000	4 5/8"	4.6250
4 1/8"	4.1250	4 1/4"	4.2500	4 3/8"	4.3750	4 1/2"	4.5000	4 5/8"	4.6250	4 3/4"	4.7500
4 1/4"	4.2500	4 3/8"	4.3750	4 1/2"	4.5000	4 5/8"	4.6250	4 3/4"	4.7500	4 7/8"	4.8750
4 3/8"	4.3750	4 1/2"	4.5000	4 5/8"	4.6250	4 3/4"	4.7500	4 7/8"	4.8750	5"	5.0000
4 1/2"	4.5000	4 5/8"	4.6250	4 3/4"	4.7500	4 7/8"	4.8750	5"	5.0000	5 1/8"	5.1250
4 5/8"	4.6250	4 3/4"	4.7500	4 7/8"	4.8750	5"	5.0000	5 1/8"	5.1250	5 1/4"	5.2500
4 3/4"	4.7500	4 7/8"	4.8750	5"	5.0000	5 1/8"	5.1250	5 1/4"	5.2500	5 3/8"	5.3750
4 7/8"	4.8750	5"	5.0000	5 1/8"	5.1250	5 1/4"	5.2500	5 3/8"	5.3750	5 1/2"	5.5000
5"	5.0000	5 1/8"	5.1250	5 1/4"	5.2500	5 3/8"	5.3750	5 1/2"	5.5000	5 5/8"	5.6250
5 1/8"	5.1250	5 1/4"	5.2500	5 3/8"	5.3750	5 1/2"	5.5000	5 5/8"	5.6250	5 3/4"	5.7500
5 1/4"	5.2500	5 3/8"	5.3750	5 1/2"	5.5000	5 5/8"	5.6250	5 3/4"	5.7500	5 7/8"	5.8750
5 3/8"	5.3750	5 1/2"	5.5000	5 5/8"	5.6250	5 3/4"	5.7500	5 7/8"	5.8750	6"	6.0000
5 1/2"	5.5000	5 5/8"	5.6250	5 3/4"	5.7500	5 7/8"	5.8750	6"	6.0000	6 1/8"	6.1250
5 5/8"	5.6250	5 3/4"	5.7500	5 7/8"	5.8750	6"	6.0000	6 1/8"	6.1250	6 1/4"	6.2500
5 3/4"	5.7500	5 7/8"	5.8750	6"	6.0000	6 1/8"	6.1250	6 1/4"	6.2500	6 3/8"	6.3750
5 7/8"	5.8750	6"	6.0000	6 1/8"	6.1250	6 1/4"	6.2500	6 3/8"	6.3750	6 1/2"	6.5000
6"	6.0000	6 1/8"	6.1250	6 1/4"	6.2500	6 3/8"	6.3750	6 1/2"	6.5000	6 5/8"	6.6250
6 1/8"	6.1250	6 1/4"	6.2500	6 3/8"	6.3750	6 1/2"	6.5000	6 5/8"	6.6250	6 3/4"	6.7500
6 1/4"	6.2500	6 3/8"	6.3750	6 1/2"	6.5000	6 5/8"	6.6250	6 3/4"	6.7500	6 7/8"	6.8750
6 3/8"	6.3750	6 1/2"	6.5000	6 5/8"	6.6250	6 3/4"	6.7500	6 7/8"	6.8750	7"	7.0000
6 1/2"	6.5000	6 5/8"	6.6250	6 3/4"	6.7500	6 7/8"	6.8750	7"	7.0000	7 1/8"	7.1250
6 5/8"	6.6250	6 3/4"	6.7500	6 7/8"	6.8750	7"	7.0000	7 1/8"	7.1250	7 1/4"	7.2500
6 3/4"	6.7500	6 7/8"	6.8750	7"	7.0000	7 1/8"	7.1250	7 1/4"	7.2500	7 3/8"	7.3750
6 7/8"	6.8750	7"	7.0000	7 1/8"	7.1250	7 1/4"	7.2500	7 3/8"	7.3750	7 1/2"	7.5000
7"	7.0000	7 1/8"	7.1250	7 1/4"	7.2500	7 3/8"	7.3750	7 1/2"	7.5000	7 5/8"	7.6250
7 1/8"	7.1250	7 1/4"	7.2500	7 3/8"	7.3750	7 1/2"	7.5000	7 5/8"	7.6250	7 3/4"	7.7500
7 1/4"	7.2500	7 3/8"	7.3750	7 1/2"	7.5000	7 5/8"	7.6250	7 3/4"	7.7500	7 7/8"	7.8750
7 3/8"	7.3750	7 1/2"	7.5000	7 5/8"	7.6250	7 3/4"	7.7500	7 7/8"	7.8750	8"	8.0000
7 1/2"	7.5000	7 5/8"	7.6250	7 3/4"	7.7500	7 7/8"	7.8750	8"	8.0000	8 1/8"	8.1250
7 5/8"	7.6250	7 3/4"	7.7500	7 7/8"	7.8750	8"	8.0000	8 1/8"	8.1250	8 1/4"	8.2500
7 3/4"	7.7500	7 7/8"	7.8750	8"	8.0000	8 1/8"	8.1250	8 1/4"	8.2500	8 3/8"	8.3750
7 7/8"	7.8750	8"	8.0000	8 1/8"	8.1250	8 1/4"	8.2500	8 3/8"	8.3750	8 1/2"	8.5000
8"	8.0000	8 1/8"	8.1250	8 1/4"	8.2500	8 3/8"	8.3750	8 1/2"	8.5000	8 5/8"	8.6250
8 1/8"	8.1250	8 1/4"	8.2500	8 3/8"	8.3750	8 1/2"	8.5000	8 5/8"	8.6250	8 3/4"	8.7500
8 1/4"	8.2500	8 3/8"	8.3750	8 1/2"	8.5000	8 5/8"	8.6250	8 3/4"	8.7500	8 7/8"	8.8750
8 3/8"	8.3750	8 1/2"	8.5000	8 5/8"	8.6250	8 3/4"	8.7500	8 7/8"	8.8750	9"	9.0000
8 1/2"	8.5000	8 5/8"	8.6250	8 3/4"	8.7500	8 7/8"	8.8750	9"	9.0000	9 1/8"	9.1250
8 5/8"	8.6250	8 3/4"	8.7500	8 7/8"	8.8750	9"	9.0000	9 1/8"	9.1250	9 1/4"	9.2500
8 3/4"	8.7500	8 7/8"	8.8750	9"	9.0000	9 1/8"	9.1250	9 1/4"	9.2500	9 3/8"	9.3750
8 7/8"	8.8750	9"	9.0000	9 1/8"	9.1250	9 1/4"	9.2500	9 3/8"	9.3750	9 1/2"	9.5000
9"	9.0000	9 1/8"	9.1250	9 1/4"	9.2500	9 3/8"	9.3750	9 1/2"	9.5000	9 5/8"	9.6250
9 1/8"	9.1250	9 1/4"	9.2500	9 3/8"	9.3750	9 1/2"	9.5000	9 5/8"	9.6250	9 3/4"	9.7500
9 1/4"	9.2500	9 3/8"	9.3750	9 1/2"	9.5000	9 5/8"	9.6250	9 3/4"	9.7500	9 7/8"	9.8750
9 3/8"	9.3750	9 1/2"	9.5000	9 5/8"	9.6250	9 3/4"	9.7500	9 7/8"	9.8750	10"	10.0000
9 1/2"	9.5000	9 5/8"	9.6250	9 3/4"	9.7500	9 7/8"	9.8750	10"	10.0000	10 1/8"	10.1250
9 5/8"	9.6250	9 3/4"	9.7500	9 7/8"	9.8750	10"	10.0000	10 1/8"	10.1250	10 1/4"	10.2500
9 3/4"	9.7500	9 7/8"	9.8750	10"	10.0000	10 1/8"	10.1250	10 1/4"	10.2500	10 3/8"	10.3750
9 7/8"	9.8750	10"	10.0000	10 1/8"	10.1250	10 1/4"	10.2500	10 3/8"	10.3750	10 1/2"	10.5000
10"	10.0000	10 1/8"	10.1250	10 1/4"	10.2500	10 3/8"	10.3750	10 1/2"	10.5000	10 5/8"	10.6250
10 1/8"	10.1250	10 1/4"	10.2500	10 3/8"	10.3750	10 1/2"	10.5000	10 5/8"	10.6250	10 3/4"	10.7500
10 1/4"	10.2500	10 3/8"	10.3750	10 1/2"	10.5000	10 5/8"	10.6250	10 3/4"	10.7500	10 7/8"	10.8750
10 3/8"	10.3750	10 1/2"	10.5000	10 5/8"	10.6250	10 3/4"	10.7500	10 7/8"	10.8750	11"	11.0000
10 1/2"	10.5000	10 5/8"	10.6250	10 3/4"	10.7500	10 7/8"	10.8750	11"	11.0000	11 1/8"	11.1250
10 5/8"	10.6250	10 3/4"	10.7500	10 7/8"	10.8750	11"	11.0000	11 1/8"	11.1250	11 1/4"	11.2500
10 3/4"	10.7500	10 7/8"	10.8750	11"	11.0000	11 1/8"	11.1250	11 1/4"	11.2500	11 3/8"	11.3750
10 7/8"	10.8750	11"	11.0000								