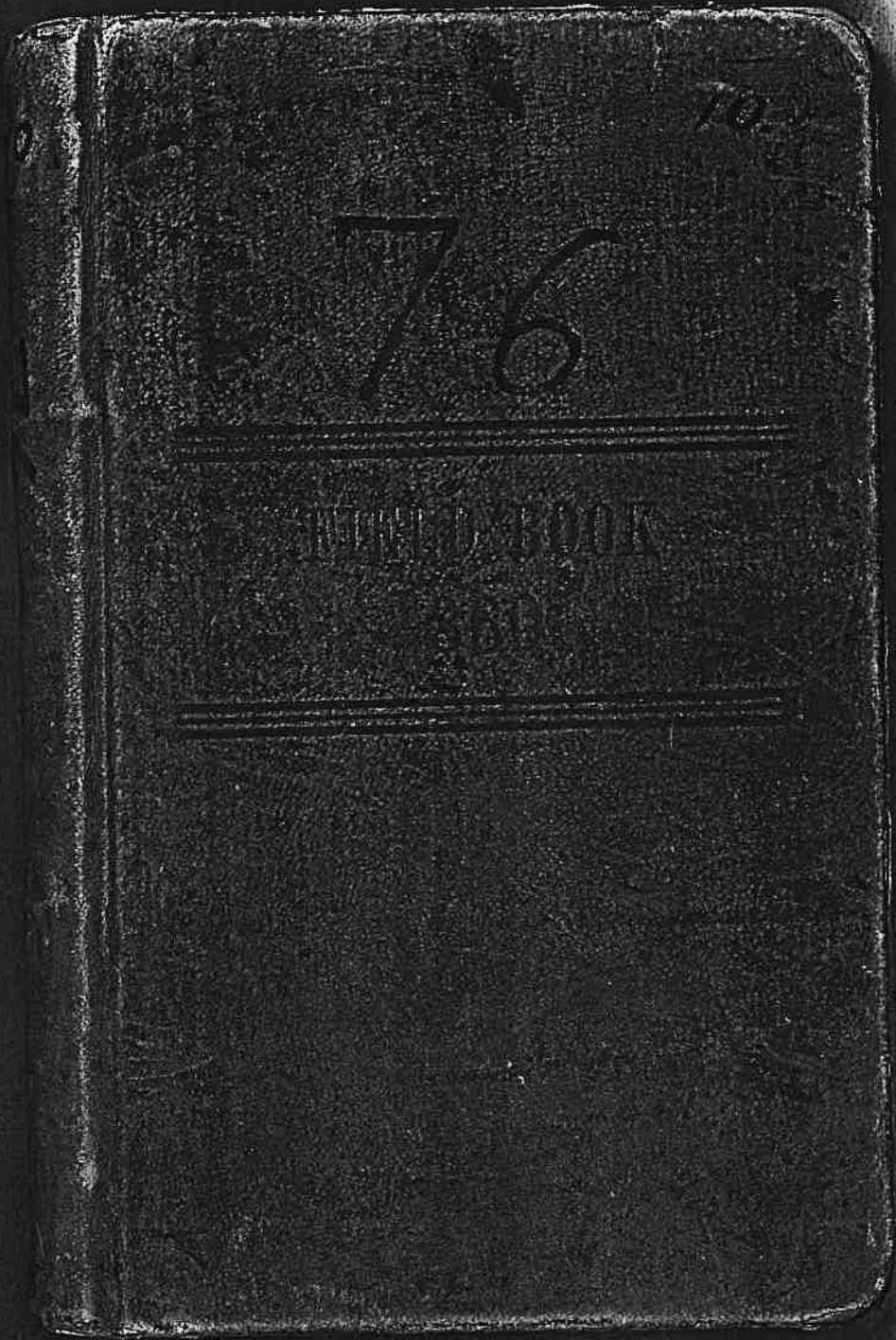


Field Book #76



76

THE HISTORY OF

KEUFFEL & ESSER CO.

DRAWING MATERIALS
AND
SURVEYING INSTRUMENTS.

NEW YORK.
SAN FRANCISCO.

CHICAGO. ST. LOUIS.

TABLES FOR EXCAVATIONS AND EMBANKMENTS.

DISTANCES FROM CENTER OF ROADWAY FOR CROSS-SECTIONING.
ROADWAY 18 FEET WIDE. SIDE SLOPES 1 TO 1.
FOR SINGLE TRACK EXCAVATION.

Copyright, 1895, by Keuffel & Esser Co.

	0	1	2	3	4	5	6	7	8	9
0	9.0	9.1	9.2	9.3	9.4	9.5	9.6	9.7	9.8	9.9
1	10.0	10.1	10.2	10.3	10.4	10.5	10.6	10.7	10.8	10.9
2	11.0	11.1	11.2	11.3	11.4	11.5	11.6	11.7	11.8	11.9
3	12.0	12.1	12.2	12.3	12.4	12.5	12.6	12.7	12.8	12.9
4	13.0	13.1	13.2	13.3	13.4	13.5	13.6	13.7	13.8	13.9
5	14.0	14.1	14.2	14.3	14.4	14.5	14.6	14.7	14.8	14.9
6	15.0	15.1	15.2	15.3	15.4	15.5	15.6	15.7	15.8	15.9
7	16.0	16.1	16.2	16.3	16.4	16.5	16.6	16.7	16.8	16.9
8	17.0	17.1	17.2	17.3	17.4	17.5	17.6	17.7	17.8	17.9
9	18.0	18.1	18.2	18.3	18.4	18.5	18.6	18.7	18.8	18.9
10	19.0	19.1	19.2	19.3	19.4	19.5	19.6	19.7	19.8	19.9
11	20.0	20.1	20.2	20.3	20.4	20.5	20.6	20.7	20.8	20.9
12	21.0	21.1	21.2	21.3	21.4	21.5	21.6	21.7	21.8	21.9
13	22.0	22.1	22.2	22.3	22.4	22.5	22.6	22.7	22.8	22.9
14	23.0	23.1	23.2	23.3	23.4	23.5	23.6	23.7	23.8	23.9
15	24.0	24.1	24.2	24.3	24.4	24.5	24.6	24.7	24.8	24.9
16	25.0	25.1	25.2	25.3	25.4	25.5	25.6	25.7	25.8	25.9
17	26.0	26.1	26.2	26.3	26.4	26.5	26.6	26.7	26.8	26.9
18	27.0	27.1	27.2	27.3	27.4	27.5	27.6	27.7	27.8	27.9
19	28.0	28.1	28.2	28.3	28.4	28.5	28.6	28.7	28.8	28.9
20	29.0	29.1	29.2	29.3	29.4	29.5	29.6	29.7	29.8	29.9
21	30.0	30.1	30.2	30.3	30.4	30.5	30.6	30.7	30.8	30.9
22	31.0	31.1	31.2	31.3	31.4	31.5	31.6	31.7	31.8	31.9
23	32.0	32.1	32.2	32.3	32.4	32.5	32.6	32.7	32.8	32.9
24	33.0	33.1	33.2	33.3	33.4	33.5	33.6	33.7	33.8	33.9
25	34.0	34.1	34.2	34.3	34.4	34.5	34.6	34.7	34.8	34.9
26	35.0	35.1	35.2	35.3	35.4	35.5	35.6	35.7	35.8	35.9
27	36.0	36.1	36.2	36.3	36.4	36.5	36.6	36.7	36.8	36.9
28	37.0	37.1	37.2	37.3	37.4	37.5	37.6	37.7	37.8	37.9
29	38.0	38.1	38.2	38.3	38.4	38.5	38.6	38.7	38.8	38.9
30	39.0	39.1	39.2	39.3	39.4	39.5	39.6	39.7	39.8	39.9
31	40.0	40.1	40.2	40.3	40.4	40.5	40.6	40.7	40.8	40.9
32	41.0	41.1	41.2	41.3	41.4	41.5	41.6	41.7	41.8	41.9
33	42.0	42.1	42.2	42.3	42.4	42.5	42.6	42.7	42.8	42.9
34	43.0	43.1	43.2	43.3	43.4	43.5	43.6	43.7	43.8	43.9
35	44.0	44.1	44.2	44.3	44.4	44.5	44.6	44.7	44.8	44.9
36	45.0	45.1	45.2	45.3	45.4	45.5	45.6	45.7	45.8	45.9

Calculated by Julian A. Hall, M. Am. Soc. C. E.

For Keuffel's Railroad Curve Tables see end of book.

-40
r.b.
Page
Transit Book #10

INDEX

	Page
Cl. 37-49 - Preliminary Lines	1-2
" 44-38	3
Manning Surveys North of County road	4-6
Fair Oaks Survey	7-9
Manning place South of County road (North Part)	10
Lot 7 BIK 1 Plat B	11
Talbots House	12
Traverse on canyon / BIK 1 PA	13
Bdry. Waite Land E & S. Stone post	14
Cl. 44 & 38	15
E. Part Beckley Land	16-23 incl
E. Line Cl. 50	24
Bdry. Waite Land / Plat D-33	25
Cl. 43	26
Cl. 41	27
Secs 3 & 17	28-30-31
Crouch Place	29
Sec. 11	32-35 incl
Company Orchard	36-37
South from $\frac{2}{11}$ / $\frac{1}{12}$	38
Waite Land	39
Plat C. Canal	40-44 incl
S. Side Plat A	45-50
Equation of Courses	51
	69

INDEX

	Page
Timber North of Plat. A.	52-53
Irrigation Canal BI-PLAT A.	71
Irrigation Canal BI PLAT D.	72
Check Angles - Waite Land	73-76
^{to} PLAT-F Canal Ties	76
PLAT B - Bks. 2 + 3	77

Ch. 39
Ch. 49
Ch. 51
Ch. 52
Ch. 53
Ch. 54
Ch. 55
Ch. 56
Ch. 57
Ch. 58
Ch. 59
Ch. 60
Ch. 61
Ch. 62
Ch. 63
Ch. 64
Ch. 65
Ch. 66
Ch. 67
Ch. 68
Ch. 69
Ch. 70
Ch. 71
Ch. 72
Ch. 73
Ch. 74
Ch. 75
Ch. 76
Ch. 77
Ch. 78
Ch. 79
Ch. 80
Ch. 81
Ch. 82
Ch. 83
Ch. 84
Ch. 85
Ch. 86
Ch. 87
Ch. 88
Ch. 89
Ch. 90
Ch. 91
Ch. 92
Ch. 93
Ch. 94
Ch. 95
Ch. 96
Ch. 97
Ch. 98
Ch. 99
Ch. 100

Sta	Dist	Angle	Bearing	Remarks
29+65	20+15	90°	South	old corner not found
29+65	20+15	90°	South	in vicinity road
29+65	20+15	90°	South	Sub from bearing tree
29+65	20+15	90°	South	Top of corner
29+65	20+15	90°	South	Setting corner
29+65	20+15	90°	South	Old corner
29+65	20+15	90°	South	Mark on bearing tree very indistinct
29+65	20+15	90°	South	C.C. is calculated from Ch. 51 using the west boundary as due N. & S.

Sta	Dist	Angle	Bearing	Remarks
29+65	20+15	90°	South	old corner not found
29+65	20+15	90°	South	in vicinity road
29+65	20+15	90°	South	Sub from bearing tree
29+65	20+15	90°	South	Top of corner
29+65	20+15	90°	South	Setting corner
29+65	20+15	90°	South	Old corner
29+65	20+15	90°	South	Mark on bearing tree very indistinct
29+65	20+15	90°	South	C.C. is calculated from Ch. 51 using the west boundary as due N. & S.

5-19-10



N.W. Cor. of Ch. 49
PLANTED STAKE
67' EAST LINE
of Ch. 43 - 2981 ft
North of S.E. corner
Ch. 73.

old corner not found
in vicinity road
Sub from bearing tree
Top of corner
Setting corner
Old corner
Mark on bearing tree very indistinct
C.C. is calculated from Ch. 51 using the west boundary as due N. & S.

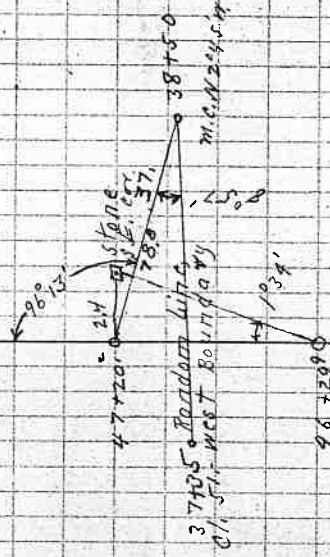
PAREL M.F. for Cl. 37. Cl. 49.
 Sta Dist. 0 4 0 A. C.C. M.C.
 Feb. 20 '20

Stone found at S.E. Cor. of Cl. 37, also
 witness trees which were decayed so we
 established new witness trees.

37 + 35 } on west boundary
 38 + 50 } modern line Cl. 37.
 47 + 20 }
 46 + 29 }
 44 + 9 }
 43 + 5 }
 39 + 7 }
 26 + 25 }
 14 + 0 }
 6 + 0 }
 S. W. Cr
 Cl. 49
 on west
 modern
 20 + 15 }
 91' 36" East
 51' 36" East

3-21-10, 21

10" laurel - S. 3° E 9 ft.
 Bearing trees for
 S.E. Cor. Cl. 37.
 Rock 310 x 20
 8" Oak - N 57° 15' W 41 ft.

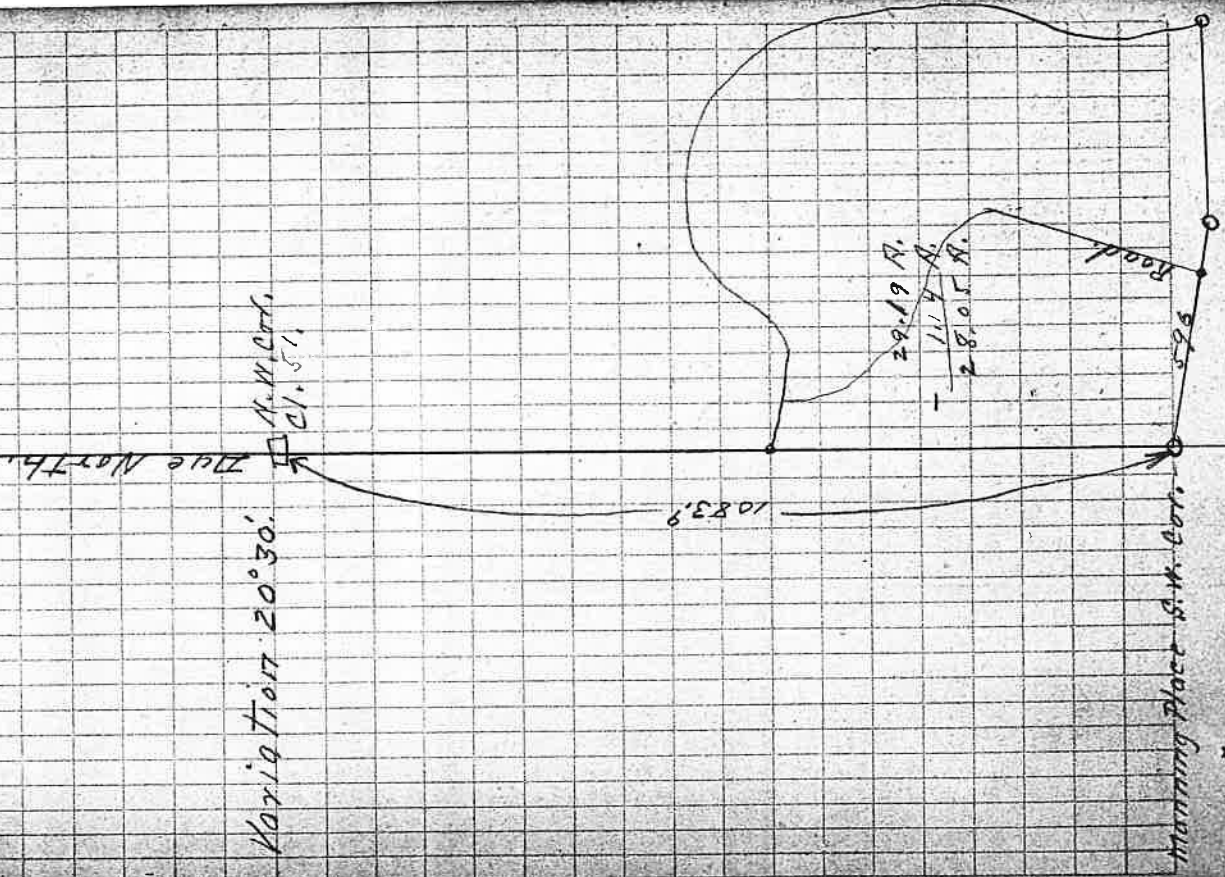


East Bank of canal

Manning Survey.
Creek traverse figured from plat.
Sta. Dist. Bearing

S.W. Cor.	488.4	South
6	229.5	N79°58'N
5	523.0	S31°28'N
4	717.4	N78°46'N
3	294.1	N54°41'N
2	664.6	N3°27'E
1	213.8	N34°08'N
Point in Center Creek	907.5	N89°45'E
Point in County road	668.6	S67°E
S.W. Cor.		

North of County Road.



West. Part Manning Place

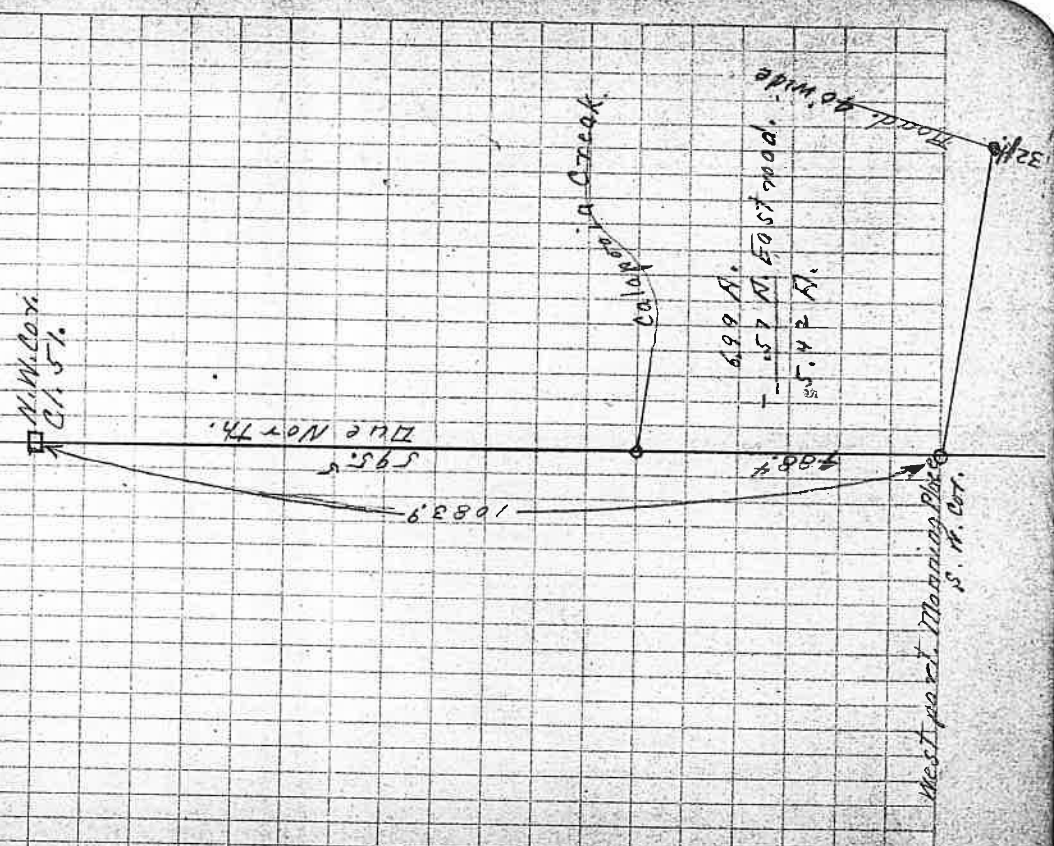
Sta. Dist Bearing

S. W.	488.4	South
7	54	N 81° 29' W
Center Calapooia River	117.	N 40° W
5	293.	S 85° W
4	158.4	West
3	122.	N 59° W
2	122.1	N 2 1/2° W
1	443.5	N 9 1/2° E
Intersection of roads.	596	S 67° E
S. W. Cor.		

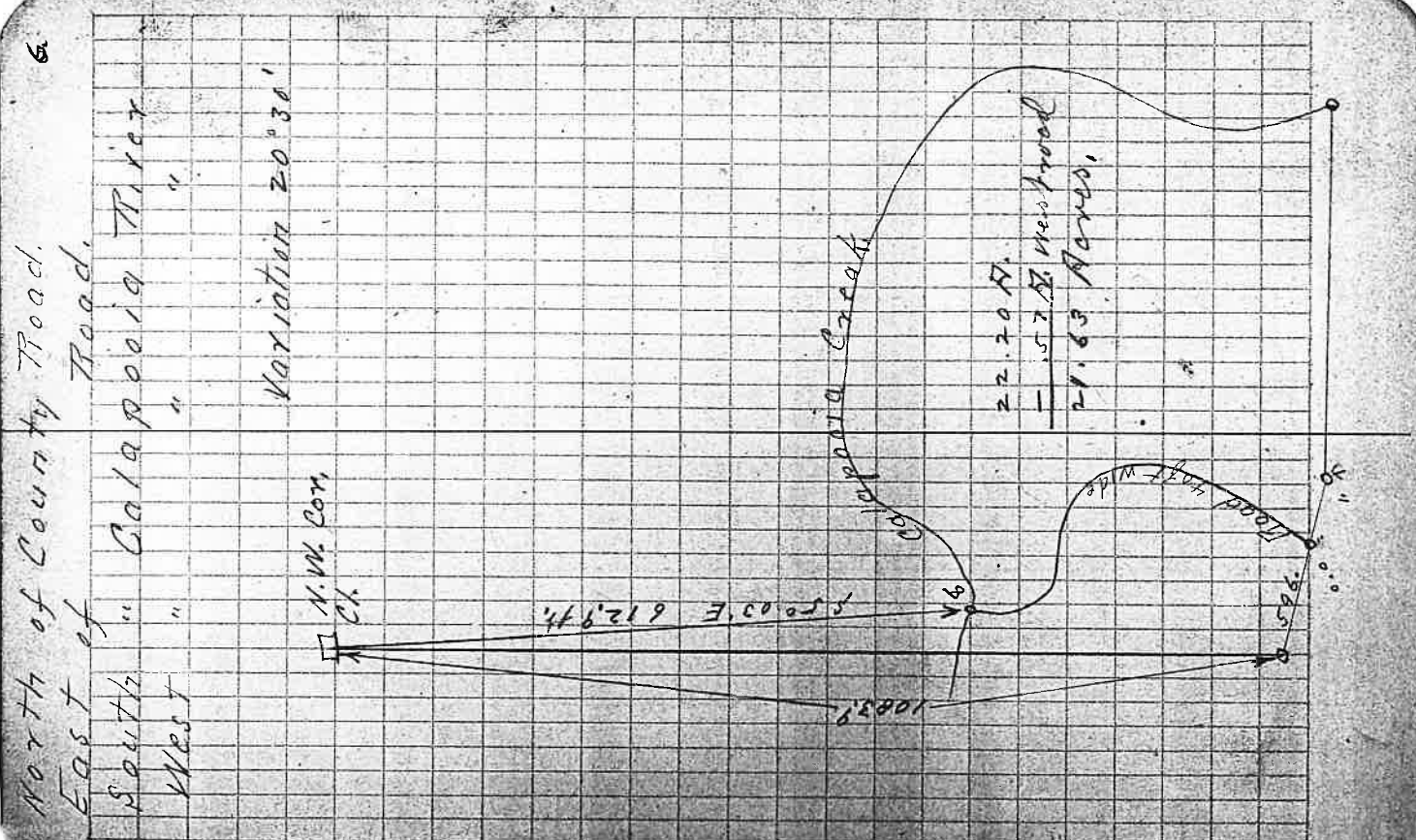
5.
North of County Road.
West " " "

South " Calapooia River
East " West Boundary C. H. S.

Variation 20° 30'



East Sta.	Port Manning Place	Dist.	Bearing.
0.0		443.5	S 9 1/2° W
13		122.1	S 2 1/2° E
12		122.1	S 59° E
11		158.4	East
10		293.0	N 85° E
9		117.0	S 4° E
Creek Road, 8		175.6	N 79° 28' W
7		523	S 31° 28' W
6		717.4	N 78° 46' W
5		294.1	N 54° 41' W
4		664.6	N 3° 27' E
3		2138	N 34° 08' W
Center of Creek, 2		907.5	N 89° 45' E
1		72.6	S 67° E
0.0			



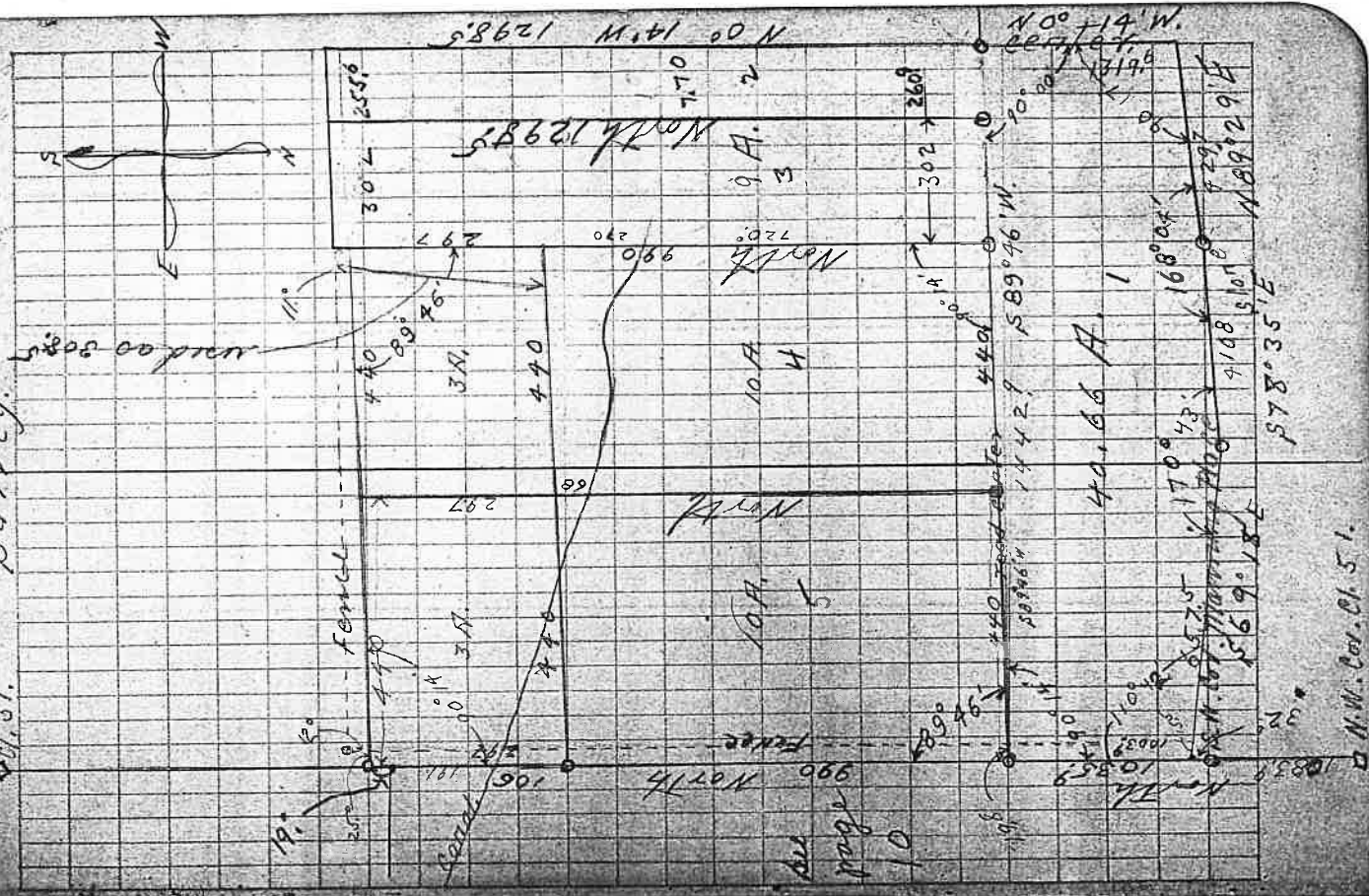
Fair Oaks Tracts
Sta. Dist. A.R. C.C.

Use - lots south of Fence & east to line of Cl. 51, but take off a lane 25' wide at south end & 15' wide at north end.

Point of beginning	Distance	Bearing
5	657.5	S 69° 18' E
4	410.8	S 78° 35' E
3	429.7	N 89° 29' E
2	1319.6	N 0° 14' W
1	1442.9	S 89° 46' W

Center of County Road on West boundary of Cl. 51 - 1415' 915' north of N.W. Cor. Cl. 51.

S.W. Cor. Fair Oaks Survey.
3-25-107



3-26-10 8.

Fair Oaks Survey.

Sta.	Dist	Azimuth
Oak tree	96	45° 05'
Ap. Transit point.		
Transit Point 1.		25° 44'
Oak tree	326	51° 00'
"	335	47° 30'
"	360	49° 00'
"	400	51° 55'
"	388	59° 30'
"	307	56° 50'
Pine tree	247	57° 35'
Oak tree	219	69° 10'
"	221	76° 45'
"	200	82° 30'
"	196	89° 20'
"	93	70° 05'
"	75	65° 40'
"	107	37° 45'
Oak tree	224	19° 20'
"	214	16° 40'
"	195	16° 30'
N.W. cor. Barn	128	352° 50'
Oak tree	89	11° 30'
"	28	4° 00'

694. 199
60. 450

using spirit level as due south.

RT Point in county road 657. 169° 18 W.
of N.E. cor. Fair Oaks Survey.

Fair Oaks Survey.

Sta.	Dist	Bearing
Oak Tree	133	316°55'
"	101	383°05'
"	195	69°25'
"	207	66°45'
"	290	62°20'
"	307	57°40'
"	290	52°55'
"	291	43°00'
"	240	41°00'
"	207	18°35'
Mell	253	14°55'
"	164	9°15'
M.W. Cor.	142	8°55'
House	130	36°55'
Oak Tree	90	97°15'
"	76	74°45'

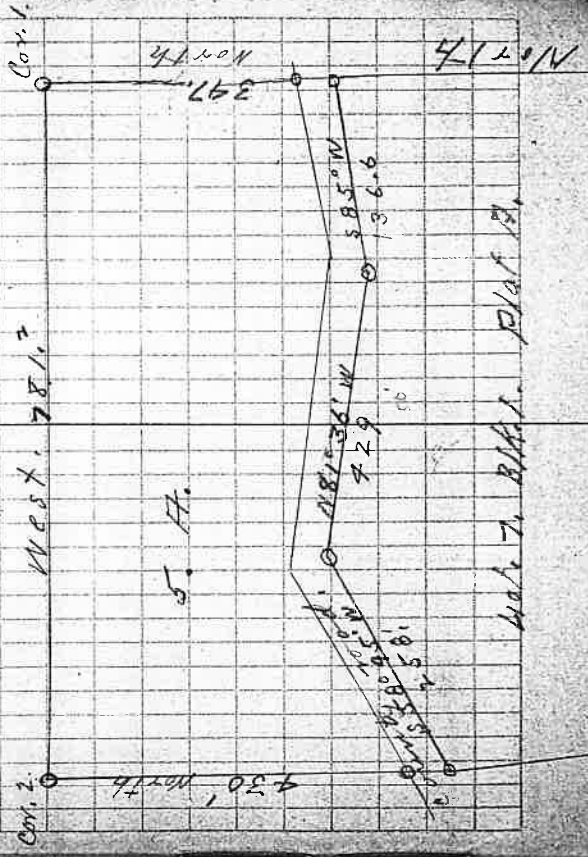
19' deep - water raised within 5 ft of surface

12 x 16

28 x 34

Cor. 2 { 12" Fir . N. 59° 45' E . 15 ft.
 { 18" Black Oak N 76° 30' W - 19.5 ft.

Cor. 1 { 10" Strub oak N 51° 30' E . 10 ft.
 { 8" Strub oak S. 56° 45' E - 21.7 ft.



Traverse of Canyon North of Lot 10. - 1-A

Sta.	Dist.	Bearing	Dist.	Bearing
40 ft. Jump.				
9	51.5'		11° 02'	N 2° E
8	15.5'		11° 30'	N 9° W
7	66		28° 15'	N 2° 30' E
6	171 ³		18° 23'	N 23° 34' W
5	117.		23° 20'	N 5° 15' W
4	155'		18° 36'	N 18° E
3	94 ⁵		0° 57'	N 0° 30' W
2	105.6		21° 10'	N 36° E
1	160.		40° 38'	N 20° 50' W
	200		20° 40'	N 19° E

M.A.W. Cont'd of 10-1-A.

S.W.

Boundary Line
 East of South of Stone Quarry.
 Sta. Dist. S.W. Δ R. C.C. M.C.
 Waite Land.

M.C. 20° 30'

7+06

5+25

13+20⁰⁰

8+90

5+85

2+80

N 1/4 S.E. 1/4 of 837
 T. 25 - R. 4,
 Sec. 17.

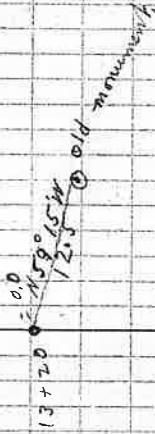
0° 02'

S 89° W

Cont'd in Book 8, Page 12

90° 00' S 89° 43' W

90° 00' S 0° 17' E S 0° 50' E



Working Year 2000-2001

Sta	Dist.	ΔH.	ΔP.	C.C.	M.S.
Stone N.W. Cor. 01.44838	3966.3				
1+88.9	188.9		0° 47'	N 89° 56' W	S 90° W.
36+17.5 Stone N.E. Cor. 01.44838	87° 54'			S 89° 17' W	S 89° 15' W
31+81.8	2° - 42'			N. 2° 49' W	N 2° 45' W.
27+04.8			0° 40'	N 0° 07' W	N 15° W.
22+56.1			0° 35'	N 0° 47' W.	N 1° W.
21+69.9	160.6				
20+09.3					
17+02.1					
16+04.8					
15+17.6					
13+95.2					
9+19.8					
7+79.4	4		1° 53'	N 0° 12' W.	N 20° W
5+10.	269.4	3° 42'		N 2° 05' W	N 2° 10' W.
2+42.1	268.0		1° 49'	N 1° 37' E	N 1° 30' E
1+62.4					
Stone S.E. Cor. 01.44838		76° 06'		N 12° W	N 12° E
				N 75° 54' E	
2.9+7.9 on South					

Randomly
LINE CL 37-44

From page 3-

East part of Cl. 47. Part of Beekley

Sta. Dist. ΔL. ΔR. c.c. m.c.

Cont'd				
79+20	613.8	90°00'	N 89°52' E	
76+31.9				
75+23.3				
73+31.0				
70+78.5		0°-30'	S 25° E	
69+85.4	93.3	1°00'	81° E	
68+91.9	90.2			
66+185				
63+94				
57+88.3				
54+55.4				
47+68.0				
33+47.8				
23+37.2				
12+32.8				

1699.5
 1791e no.
 47 N.E. Co. 4
 Cl. 42

4-11-10. 16.

Variation Set on 20°30'

(C.C. carried from West boundary of Cl. 51
 7255. R 4 W)

{ S 18' }
 { E 56.2 }

Corner Stone in Fence Co. in South boundary of R 4 W. side
 18.5
 8.5
 8.5
 18.5
 Contract South Line
 N 89°52' E 59.4 ft.
 Cor 3 to 4

{ S. 18.0 ft. }
 { E. 78.6 ft }

4x8x16 Stone fence Cor. (Cor. 3)
 10ft East of fence Cor. 80.8 E

79+20

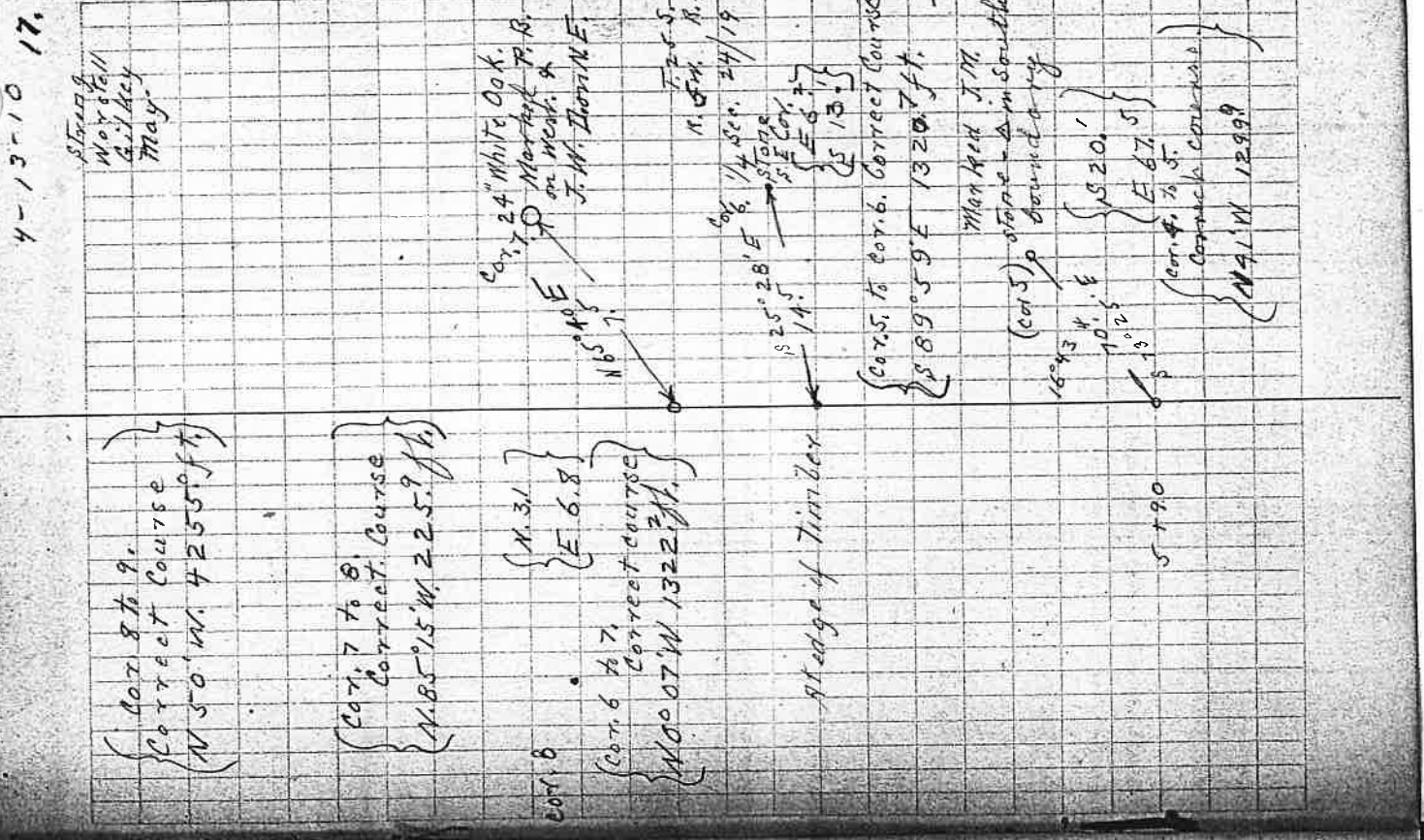
Cor. 2 to 3
 (North West Line)
 S 42° E 79.38 ft.

Begining of Timber

Plot

1699.5
 N 89°52' E
 (Cor. 1)

Sta.	Dist. or Cont'd. or W. by page	Land.	Dir.	C. C.	M.C.
37+28.7		1° 21'	N 0° 22' E	N 0° 26' E	
32+54.6	970.4		N 0° 59' W	N 1° 05' W	
27+58.3	369.8	0° 10'	N 0° 49' W	N 1° 00' W	
23+88.5	132.9	2° 00'	N 2° 49' W	N 0° 30' W	
22+55.6	181.8				
18+49.8					
15+17.6					
9+33.1					
4+37.4					
Stone Marked J.M. 4374 on East Line		0° 41'	N 0° 49' W	N 1° 05' W	
	219.1	82° 58'	N 1° 30' W	N 1° 45' W	
13+06.		84° 20'	N 84° 28' W	N 84° 50' W	
11+23.2					
2+33.9					
19+72.1		90° 00'	N 0° 08' W	N 0° 30' W	
17+00.3					
14+79.8		1° 53'	N 89° 52' E	N 89° 30' E	
11+67.9	311.9	1° 53'	S 88° 15' E	S 88° 30' E	
10+21.0					
8+98.9					
7+10					
5+90					
At 66+18° on West Range line	90.00'		N 89° 52' E	N 89° 35' E	
			S 0° 08' E		



Stacy
Nov. 21st
Galtley
May.

COR. 7
N 1° 31' E
COR. 8
E 6.8

COR. 6 to 7
Correct course
N 0° 07' W 1322.7 ft.

Sledge of Timber

COR. 5 to COR. 6. Correct course
S 89° 59' E 1320.7 ft.

Man with J.M.
stone - in South
boundary

16° 43' 4" E
10° 25' E
5+90
N 91° 1' W 1299.9

COR. 5
COR. 6
COR. 7
COR. 8

4-13-10 18.

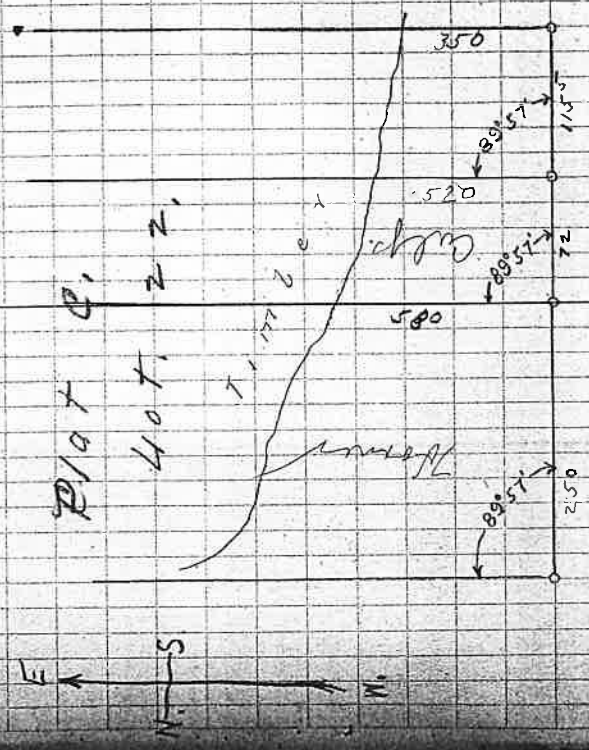
East Part of Cl. 42 - Part of Beckley
 Sta. Dist. A.L. D.R. C.C. M.C.

M.W. Coy.
 Cl. 42.

42+36.7 - SW. Cor. of Cl. 42
 1069.
 On Eastline
 of Cl. 42.
 508.0
 From page 17.

N 60° 21' W

N 0° 22' E



608.1

607.0

Sta.	Dist. n Next page.	Beckley Land	A.C.	M.C.
15+84.5				
17+67.1				
15+15.6				
13+69.1				
11+71.0				
10+81				
B+14.1	0° 25'	South	S 0° 05' W	
5+26.7	28.7	0° 46'	S 0° 25' W	S 0° 25' W
3+10.8	215.9	2° 09'	S 0° 21' E	S 25° E
2+18.5	92.3	5° 00'	S 2° 10' E	S 2° 30' E
1+20.6	97.9		S 2° 30' W	S 2° 25' W
2+715.00 (see cont.)			South	S 0° 10' W
2+29.7	47.8	61° 13'	S 61° 13' E	S 61° 15' E
0+88.3	141.4	0° 38'	S 78° 01' E	S 78° 5'
0+88.3	88.3	17° 23'	S 77° 23' E	S 77° 30' E
5+23.4				
3+77.0				
245.0				
0+5.5 loc				
0+1.5, 1.5, 1.5, 1.5, 1.5				
on South Boundary	122.4		South	
Ch. 5.1 -	1502.4	East of S.W. Cor.	N 89° 05' E	89° 05' E

4-14-10 20.

Stang
Notated
Beckley
West.

Summit { Expanded view of Sutherland
Valley with marking up to see }

S 55° W 58.8' 28" fine

1.5' 2' ✓

4.0' ✓

4.3' ✓

7 8 T. 25.5 R. 4 W. We set "A" Chink-a-pin

18 17 oak stake from bearing trees

23° 41.9

24° 108.3

19° 86.7

Established corner from B.T.
set 3 in Oak for corner,
S.W. cor. 0.147. 60.9

565.7
E-7.5

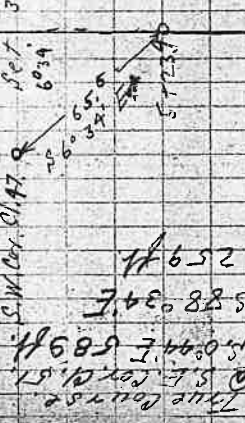
259.7

150.44 E 58.9 ft

150.44 E 88.3 ft

572.3

3 Oak stake set from witness trees.



Sta.	50+50.1	488.8.7	46+43.9	45+41.8	439.0.2	42+70.6	42+89.6	37+70.4	36+86.8	35+80.3	34+58.1	33+74.1	32+88.0	31+52.0	30+93.0	29+81.2	28+72.8	26+64.8	26+18.0	25+12.6	24+50.1	23+55.2	21+04.1	19+83.5
Height	170.0	244.3	253.7	170.6	532.8	248.7	64.2																	
Angle	1° 49'	1° 33'	1° 55'	2° 53'	2° 43'	1° 55'	4° 13'										1° 33'							
Direction	South	S 10° 49' E	South	S 1° 33' E	S 2° 53' E	S 2° 43' E	S 4° 13' E	S 2° 45' E	S 2° 45' E	S 2° 15' E	S 2° 15' E	S 2° 15' E	S 2° 15' E	S 2° 15' E	S 2° 15' E	S 2° 15' E	South	S 10° 33' W	S 10° 33' W	S 10° 33' W	S 10° 33' W	S 10° 33' W	S 10° 33' W	South
Notes																								

East Boundary of Bechtley Land Between Sec. 17-18-T. 25S. R. 4S.

Build on Next page.

170.0

244.3

253.7

170.6

532.8

248.7

64.2

165.0

165.0

165.0

165.0

165.0

165.0

165.0

165.0

165.0

165.0

165.0

165.0

165.0

165.0

165.0

165.0

165.0

165.0

165.0

From page 20.

Summary line runs through a saddle.

Summary

At T. 18/17 on true south hits 17.3 West of 1/4 cor. 8.14.5 West of 18/17
Correct course would be 17.3
18° 0' 23' E. 2638.3 to 18/17
19° 0' 04' W. 2633.2 to 18/17
T. 25S. R. 4W.

T. 25S. R. 4W.

14/17/18

(South 20.3
East 18.4)

Established from 18/17

27.0

27.0

226+18.0

To 29.79 on South tandem of Cl. 44.938

N.E. cor. Cl. 50
S.E. cor. Cl. 44.938

Corner set boundary
Cl. 50.

11308 173

117135

9765' 148'

7788.9 176'

64 139 175'

104.06

7° 16'

1° 52'

S 78° 54' W

N 0° 10' 10" 20' W

S 81° 36' W 55' 1.5 mi

S 88° 52' W 588° 30' W

S 88° 10' W 588° W

Set 5" OAK For Cor.

B. T.

779 7404

S. L. W.

N 53° E 188'

To 5" Laurel

S 60° E 24.7'

To 8" W. Oak

S 70° W 14.8'

To 5" W Oak

True line
S 89° 14' W 1130'

27

From Page, 22

4-19-10

Plot A Bk 3.

N.E. Cont 4 N.W. Cont 6

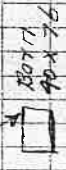
523° 30' E
66'

59° 30' W
54.30 m

53.10 m



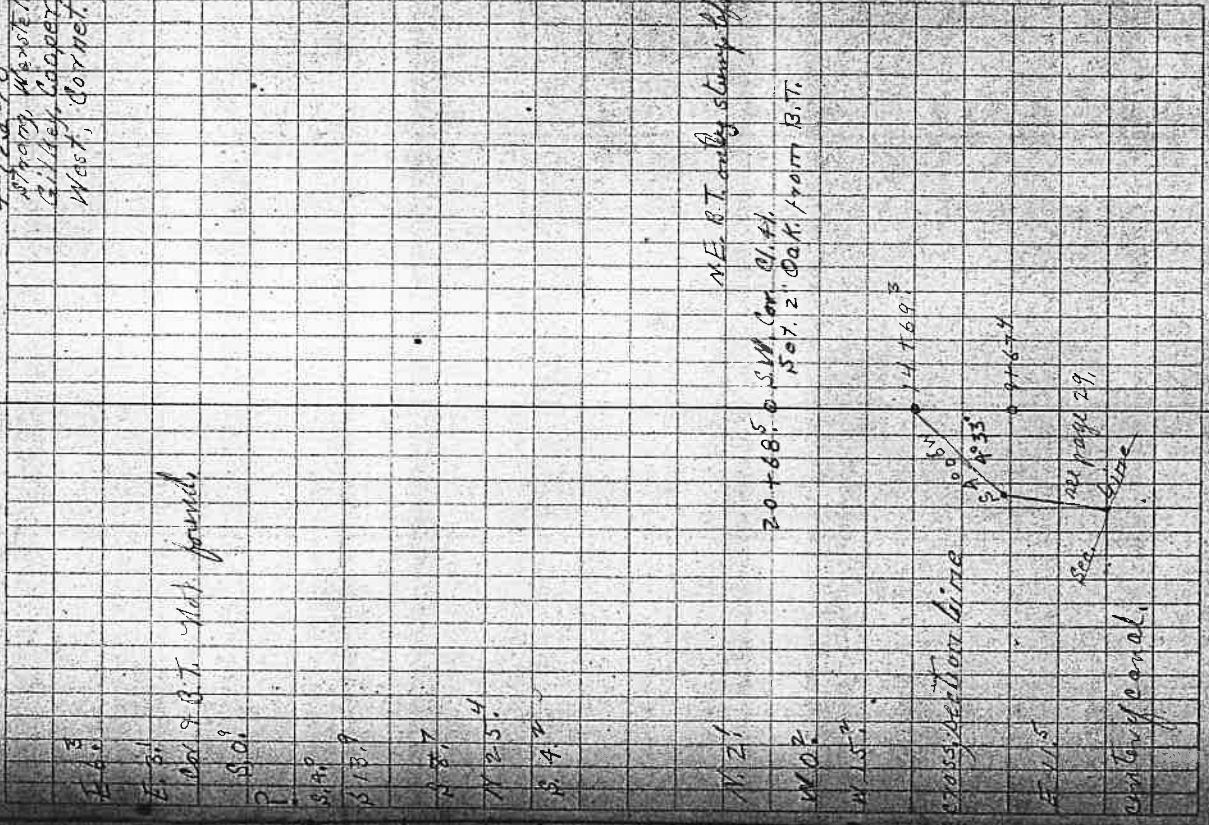
30 x 53
180777



80 x 77
40 x 76

4-23-10
 1790 ft. West of
 1111 ft. corner
 West corner

Cl	Al	T	255	A. 4. W.
could on page 31	Δ L	Δ B	Δ C	W.C.
6481.8	0° 24'		\$ 102.5'E	\$ 1030'E
5495.5	349.8			
3432.0	0° 30'	8920'	\$ 1° 02'E	\$ 1° 10'E
22449.7			\$ 0° 32'E	\$ 30'E
20418.9				
18481.9	1° 31'		\$ 89° 52'E	East
17443.1	0° 58'		\$ 88° 21'E	\$ 88° 30'E
14437.7	1° 00'		\$ 87° 23'E	\$ 87° 25'E
13462				\$ 86° 20'E
12499.5		8° 00'	\$ 86° 23'E	\$ 86° 25'E
9467.3	5° 23'		N 85° 37'E	N 85° 45'E
7427.7		1° 00'	\$ 89° E	N 89° 15' W
5430.7				
4454.1				
2413.9	90° 49'	37'	East	N 55° E
20468.5	1° 18'		N 89° 26'E	\$ 89° 15'E
20431			\$ 0° 15' W	\$ 0° 10' W
17494.9		20° 00'	\$ 1° 33' W	\$ 1° 20' W
14469.3				\$ 1° 25' W
9467.4			\$ 0° 27'E	\$ 0° 10'E
6466.5				\$ 0° 30'E
2458.4				
2410				
W.C. cor.				
Cl. 41				
Point at North Boundary	89° 30'		\$ 0° 27'E	South
			\$ 89° 00' W	



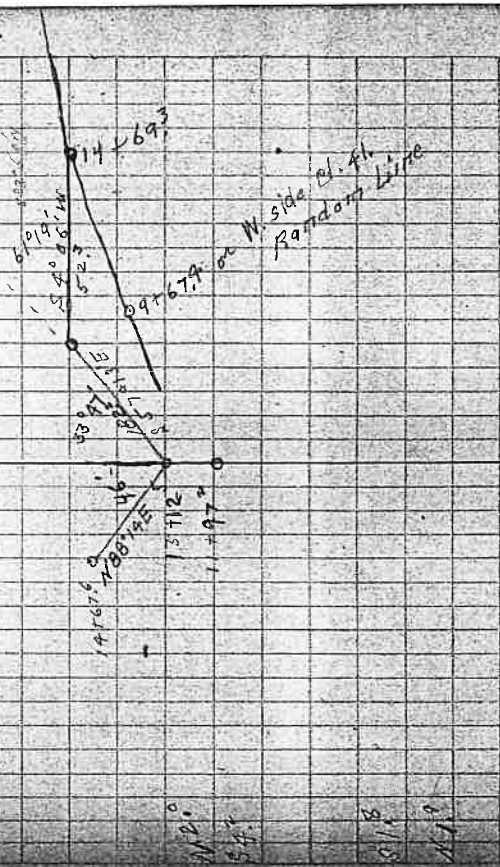
NE B.T. and by stony hill
 20+68.0 S.W. Cor. Bl. H.
 507.2' Dist. 14017 B.T.

4-2270

East Between 17	T. 25 S. R. 4 W.	DR	C. A.	W.M.C.
26734.8				
24787.9				
22712.5				
19796.8				
19701.5				
13712.5				
11797.4	115.3	2°-00'	East	East
9757.6	239.6	1°-00'	N89°E	N89°E
6790.8	544.7		S89°E	S89°E
4712.9		0°-47'	East	S89°55'E
2781.8	131.1		S89°13'E	S89°20'E
281.8	281.8	1°-10'	N89°37'E	N89°30'E
181.8	T. 25 S. R. 4 W	29°-10'		
2729.7	47.8			
on Random				
from S.E. Coy. 51				

(B.T. & 4 distance $\frac{8}{7}$ not found.)

27710 Canal



East on North Boundary Cl. 41

A.L. A.R. C.C. M.C.

20 + 44⁹
 19 + 13² 299
 17 + 45⁵
 16 + 29⁵
 14 + 96⁹ 436.9
 1308⁶
 12 + 00 189
 11 + 19⁶
 10 + 10 109

W. W. Am
 Cl. 41
 2010 on west-tension line

11"
 back to
 for

189° E
 189° 01' E 188° 50' E
 887° 15' E
 887° 14' E 887° 10' E
 7° 15'
 185° 31' E 185° 45' E
 187° 06' E 187° 0' E

89° 30' N 89° 03' E
 10° 27' W

4-22-10

11.47 E 299.3
 1521.1 E 436.9
 1114.8 E 438.4
 11.55 E 109.5

On East bank of canyon
 Calaveras River
 W. Bank of union of Cal. River
 on west edge of county road

11.55

Cl. 41.	T. 25 S. R. 4 W.	D.C.	M.C.
197197	1° 59'	S 0° 31' E	S 40' E
177523	2° 20'	S 2° 36' E	S 20° 45' E
157645	1° 32'	S 0° 16' E	S 0° 10' E
117319	0° 45'	S 1° 48' E	S 1° 45' E
97968	1° 07'	S 0° 41' E	S 0° 40' E
67815	3° 15'	S 1° 26' E	S 1° 30' E

cont'd from page 28

E. 7.5
E. 0.9
E. 13.6
E. 1.6
E. 7.9

From page 28

Traverse of Crouch Place.

3794

394

1320'

1185.8

8704.3

5163.5

13701

41497

37693

C.S. W. Cr.

Theil Hand

189°35'E

East

90°00'

N 25' W

North

90°00'

189°35'E

East

Set 3' Oak Post for corner.

East 21.6 ft

1320

Set 3' Oak Post for corner.

S 72° 29' E

1301

20°

E 19°

S. 6'

Top of Hill

Sec. 11. North Boundary.
Sta. Dist. A.L. A.F. C.C. M.A.

14	117
26	42.5
24	83.1
24	102.7
11	88.6
20	73.8
19	84.3
18	74.9
17	46.6
15	31.2
12	02.0
10	81.7
9	83.6
9	114
8	46.7
6	48.5
4	76.9
3	23.7
1	90.7

Sec. 11
12
11
12

36+42.5 m with random C.143.

N 85° 05' W
N 89° 45' W

N 89° 40' W
N 89° 35' W
N 89° 35' W

N 89° 30' W
N 89° 35' W
N 89° 45' W
N 89° 35' W

N 89° 29' W
N 82° 18' W

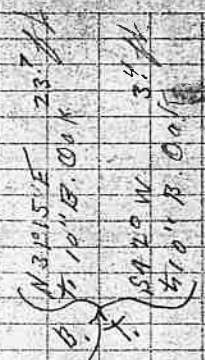
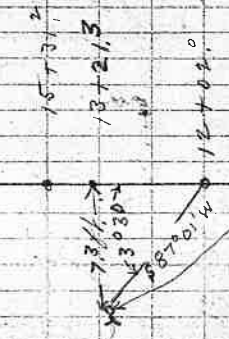
36.

May 9 1918

Spring
Cl. West
West of
C. 143
Rise
L. 143

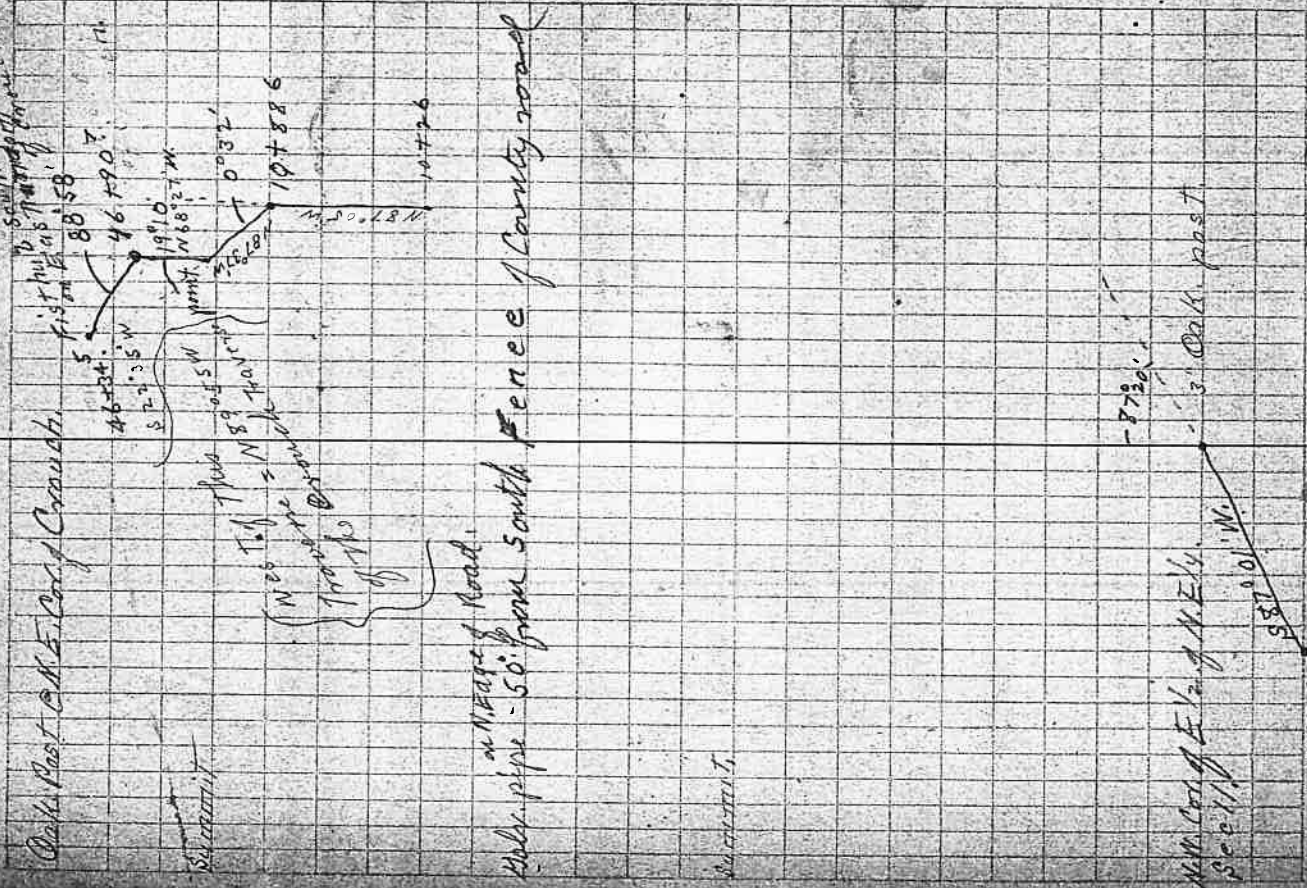
Set Oak Post for W. 11. Established from B.T.
(Following N. 40. N. of Post.)

N. 11. 60. N. E. 1/4 of
N. 25-6 R. 5 W.
Set 3" Oak Post.



True line from 11. 11
N 89° 48' W 2642.5 ft

Sec 11. T. 255. R. 5 W. West boundary				
Sta. DIST	Δ R.	Δ C.	Δ R.	Δ C.
13 + 06.7				W.C.
10 + 88.6	1° 37'	N 88° 42' W	2° 43'	N 87° 40' W
10 + 26.1		N 87° 05' W	1° 46'	N 89° 20' W
9 + 32.1	1° 32'	N 89° 48' W		N 88° 26' W
8 + 10.7		N 88° 26' W		N 89° 0' W
7 + 35.5		N 89° 0' W	0° 46'	N 89° 0' W
5 + 54.7		N 89° 02' W		N 89° 0' W
3 + 00.8		N 89° 02' W		N 89° 0' W
1 + 90.6		N 89° 02' W		N 89° 0' W
26 + 40		N 89° 48' W	90° 31'	S 89° 15' E
24 + 12.6				S 80° 15' E
20 + 67.8				S 0° 25' E
19 + 15.5				S 0° 30' E
10 + 92.1				S 2° 15' E
10 + 37.6				S 1° 15' E
9 + 34.6				S 0° 25' E
8 + 26.3				S 15' E
7 + 37.5				S 25' E
6 + 17.1				S 87° 01' W
4 + 00.8				S 87° 01' W
2 + 25.5				
1 + 64.5				
Dak. Post.	87° 20'	80° 19' E		825' E
		887° 01' W		887° 01' W



12707
on North No. 1000 ft. Detachment Sec 11
See page 36.

BUILDING OF WHITE LAND

East of Plot G, C.C.

Dist. A.L. 189° 47' E

13117' N 89° E

12442' N 89° E

10448.8' N 89° E

9434' N 89° E

6792' N 89° E

5124' N 89° E

4176.5' N 89° E

1/4 Sec 9 T.25S. R.5W

24183' N 89° 47' E

81913' N 89° 47' E

77231' N 89° 47' E

5115' N 89° 47' E

1123.5' N 89° 47' E

26127.5' N 89° 47' E

24183' N 89° 47' E

23117' N 89° 47' E

22116' N 89° 47' E

20124' N 89° 47' E

18181' N 89° 47' E

17127.8' N 89° 47' E

15123.6' N 89° 47' E

13196.5' N 89° 47' E

13141.7' N 89° 47' E

1005.4' N 89° 47' E

716' N 89° 47' E

4775.6' N 89° 47' E

4102.3' N 89° 47' E

From page 40

18+20
15.5 ft
174" R. Oak
115° W
127 ft
1616" R. Oak

3" Oak Stub @ N.E. cor. of N.W.
1/4 S.W. 1/4 of Sec. 9. T.25S. R.5W

189° 30' W 398.7
189° 30' W 2670

189° 39' W
100° 07' E
100° 07' E
100° 07' E

189° 39' W
100° 07' E
100° 07' E
100° 07' E

189° 39' W
100° 07' E
100° 07' E
100° 07' E

189° 39' W
100° 07' E
100° 07' E
100° 07' E

189° 39' W
100° 07' E
100° 07' E
100° 07' E

189° 39' W
100° 07' E
100° 07' E
100° 07' E

189° 39' W
100° 07' E
100° 07' E
100° 07' E

189° 39' W
100° 07' E
100° 07' E
100° 07' E

189° 39' W
100° 07' E
100° 07' E
100° 07' E

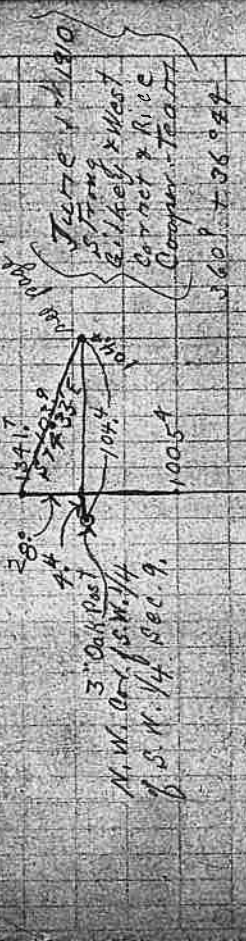
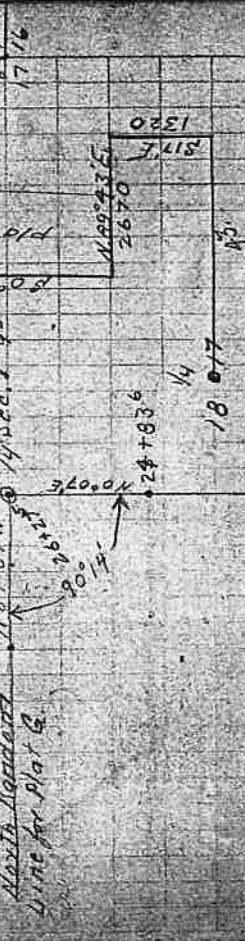
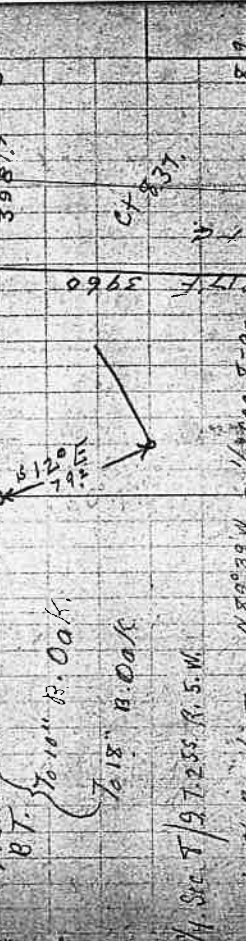
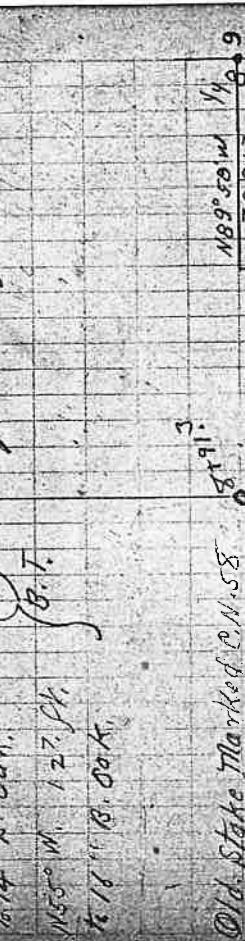
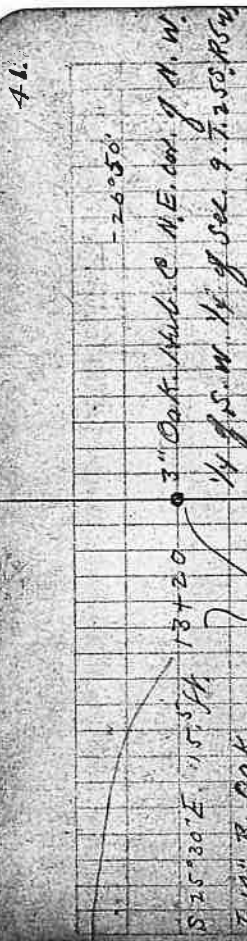
189° 39' W
100° 07' E
100° 07' E
100° 07' E

189° 39' W
100° 07' E
100° 07' E
100° 07' E

189° 39' W
100° 07' E
100° 07' E
100° 07' E

189° 39' W
100° 07' E
100° 07' E
100° 07' E

189° 39' W
100° 07' E
100° 07' E
100° 07' E



N.E. Cor. Cl. 43.

Sta. Dist. ΔL ΔR. C.C.

10917

N.W. Cor. Cl. 43

X on Bear track

5' Oak Stake

2162

187

6.9 A

Lucy Phillips



North 1279.5

North 1200

North 1279.5

North 1200

North 1279.5

North 1200

North 1279.5

North 1200

See page 65

238

212.5

1640

5349

2048

2086

14803

59023

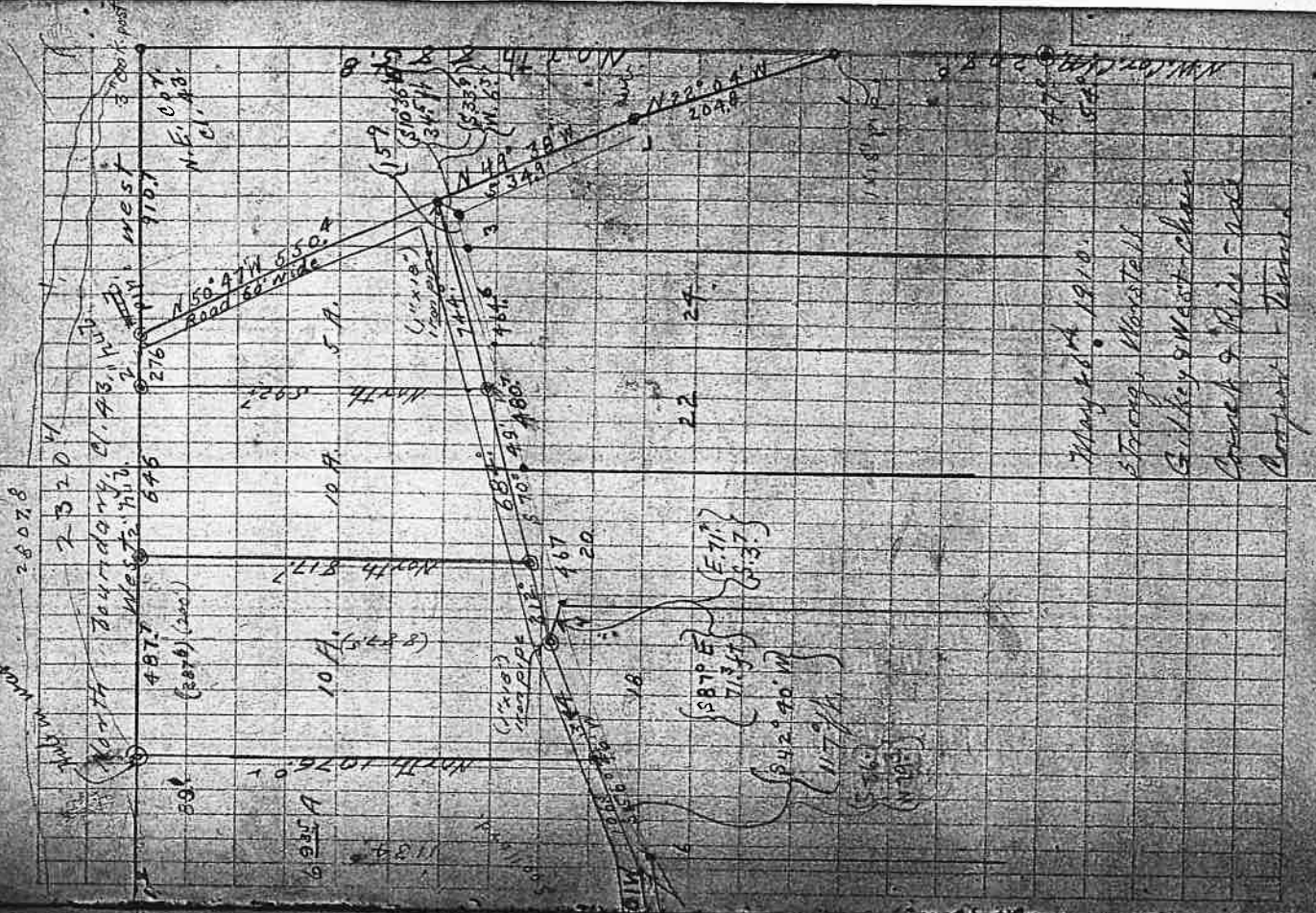
27°34'

22°04'

Farth of road

N.W. Cor. Cl. 44

72



May 20th 1910.
Strong, Westfall
Gilkey & West-chen
Crank & Bin - nec
Crank & Bin - nec

Worstell
West
Aice
Garner
Cooper

540.1 Crossed Wire Fence

East N 89° 10' W

19 + 31.6

4 + 57.8

MC

CC

AR

ΔL

Dist.

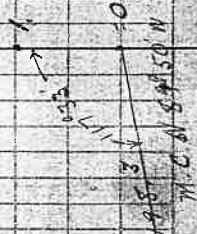
Sta

Plot S. Corol.

Sta.	Dist.	Au	AR	C.C.	^{20.30'} 944.0'
11	169'		26°42'	N53°22'E	N53°0'E
10	176'		24°38'	N26°40'E	N26°15'E
9	95'	31°36'		N2°02'E	N1°30'E
8	202.5'	16°52'		N53°38'E	N33°15'E
7	208.0'	16°22'		N50°30'E	N50°0'E
6	115.2'	4°55'		N66°52'E	N66°25'E
5	73.3'		22°20'	N71°47'E	N71°15'E
4	126.5'		34°06'	N49°27'E	N49°0'E
3	150.3'		17°56'	N15°21'E	N14°45'E
2	165.8'	10°25'		N2°35'W	N3°1'W
1	85.7'	20°40'		N7°50'E	N7°20'E
0				N28°30'E	N28°5'E

944.0' - center of road. E & W

June 2nd 1910
 15 7 10 79
 S. W. Coy.
 Carney, Wash D.C.
 Catapey - 100m



S. W. Coy.
 422. B. 2
 Plate.

6-2-1910

Sta.	Dist	Plat C.	Cor.	AR.	C.C.	20° 31' SM.
24	130.3	16° 05'			N 53° 40' E	N 53° 05' E
23	78°			31° 41'	N 69° 45' E	N 69° 15' E
22	73.6			20° 31'	N 38° 04' E	N 37° E
21	175.8			29° 06'	N 17° 33' E	N 12° 25' E
20	167.0	43.52'			N 12° 03' W	N 12° 35' E
19	149.8			14° 42'	N 31° 49' E	N 31° 30' E
18	78.9	28° 30'			N 17° 07' E	N 11° 45' E
17	122.1			23° 21'	N 45° 37' E	N 44° 45' E
16	98.7			14° 15'	N 22° 16' E	N 21° 45' E
15	76.5	15° 36'			N 8° 01' E	N 8° E
14	173.7	13° 56'			N 23° 37' E	N 23° 30' E
13	50.9	82° 02'			N 37° 33' E	N 37° 05' E
12	98.5			66° 13'	S 61° 25' E	
11					N 53° 22' E	

W. E. of East edge of road @ cut 17/16 March 25.

East edge of road

in west side of road.

14 + 64 = cut 19/20 on East Edge of road.

12 x 31 = center of road.

8-2-1910

36 + 305.6 = 243.9 South of East cor. by 7.7/8 Black. 2 Plot C.

Plot C. 771.0' 515.0' 15' W. 115' 49' Filling course is 316.0' 214'

37 + 127.7 = 929 East of Fence on East side of road 10/11 between

301.92 = 629.7 E. of Fence on E. side of road 12/13 between

Sta.	Plot C. Dist.	Δ L.	Co 707 Δ R.	C.C.	Mag.
37	534.5	9° 10'	N 35° 49' E	N 35° 10' E	
36	139.9	13° 04'	N 44° 59' E	N 44° 30' E	
35	144.2	26° 28'	N 31° 55' E	N 31° 00' E	
34	215.7	21° 48'	N 5° 27' E	N 5° 0' E	
33	214.0	43° 21'	N 27° 15' E	N 28° 45' E	
32	146.3	25° 33'	N 7° 0' 36" E	N 7° 10' E	
31	293.0	20° 53'	N 44° 53' E	N 44° 30' E	
30	273.1	22° 17'	N 24° 10' E	N 23° 30' E	
29	157.6	61° 42'	N 46° 27' E	N 46° 0' E	
28	144.3	90° 00'	N 15° 15' W	N 16° W	
27	98.0	16° 20'	N 79° 45' E	N 73° E	
26	123.7	33° 37'	N 58° 25' E	N 57° 40' E	
25	35.1	28° 52'	N 54° 48' E	N 24° 10' E	
24			N 53° 40' E		

6-2-1910

Sta.	Dist.	Alt.	A.R.	C.C.	M.C.
50	140.2	48.44'		N0°08'E	N0°20'W
49	139.6	21°51		N18°53'E	N113°E
48	294.4	38°38		N40°44'E	N40°30'E
47	127.4		34°58'	N79°22'E	N79°E
46	169.9		53°32'	N44°24'E	N42°50'W
45	80.4	20°40'		N9°08'W	N99°45'W
44	195.9		36°45'	N10°58'E	N10°35'E
43	107.5	107.09		N25°49'W	N26°15'W
42	170.4	35°48'		N81°10'E	N51°E
41	100.0		26°15'	N63°32'E	S64°E
40	232.8		35°53'	N89°47'E	N89°50'E
39	180.4		10°34'	N54°20'E	N54°E
38	274.3		7°57'	N43°46'E	N53°E
37				N35°40'E	

44 + 374 = 418 Bank }
 44 + 374 = 418 Bank }
 44 + 374 = 418 Bank }
 44 + 374 = 418 Bank }
 44 + 374 = 418 Bank }
 44 + 374 = 418 Bank }
 44 + 374 = 418 Bank }
 44 + 374 = 418 Bank }
 44 + 374 = 418 Bank }
 44 + 374 = 418 Bank }

39 + 225 = 264 Boulevard old road
 38 + 150

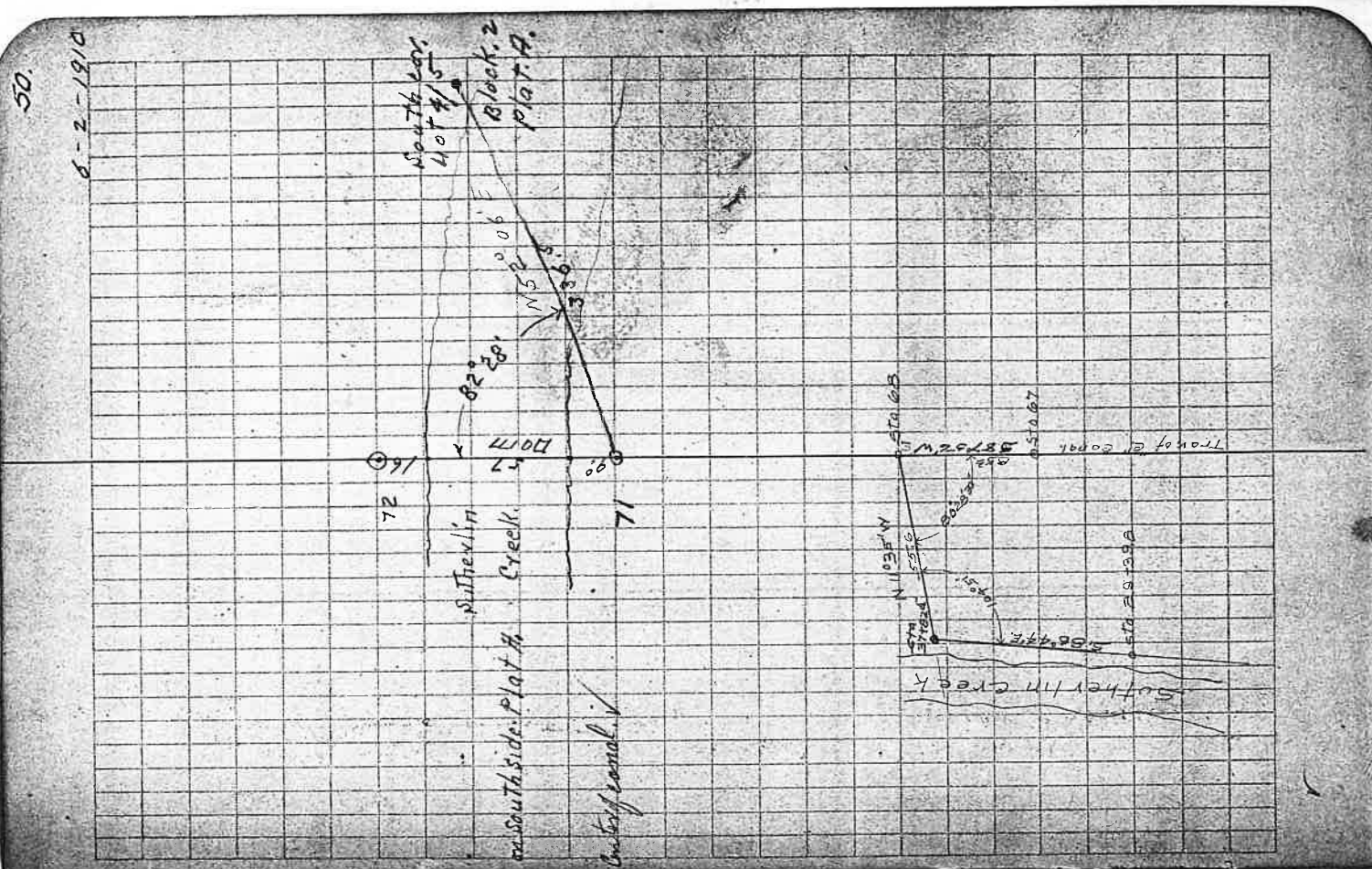
L

Flat G. Carol

Sta.	Dist.	ΔL	ΔR	C.C.	M.C.
63	116.0	47°43'		N20°59'E	N20°30'E
62	63.7		43°40'	N68°42'E	68°10'E
61	126.0	31°48'		N25°02"E	N24°30'E
60	228.0	28°39'		N56°50'E	N56°20'E
59	150.1	19°57'		N85°29'E	N85°0'E
58	278.1		6°23'	S74°34'E	N75°E
57	270.0	39°04'		S80°57'E	S81°30'E
56	100.0		70°07'	S41°53'E	S42°25'E
55	163.7		53°11'	N68°00'E	N67°30'E
54	391.9	68°28'		N14°19'E	N14°20'E
53	122.3		16°52'	N83°17'E	N83°E
52	148.7		25°35'	N166°25'E	N66°E
51	156.2		30°41'	N30°50'E	N30°20'E
50				N8°09'E	

6-2-1910

62+46' = E. White road.



Sta.	Plot, C. Canal.	Dist.	Δ L.	Δ R.	C.C.	M.C.	
72		82					
71		70.14'			N30°52'W	N30°30'W	
70		68.9	18°56'		N40°22'E	N39°30'E	
69		385'			11°53'	N59°18'E	N58°50'E
68		219.0	40°31'		N47°15'E	N47°0'E	
67		85.3			33°54'	N89°56'E	N87°20'E
66		278.5			22°20'	N54°02'E	N53°30'E
65		95.3				N31°42'E	N31°0'E
64		214.2			32°39'	N53°33'E	N53°10'E
63		92.6				N20°59'E	

North of 40T. 7. BIK. 1. 52.
 Plat A.

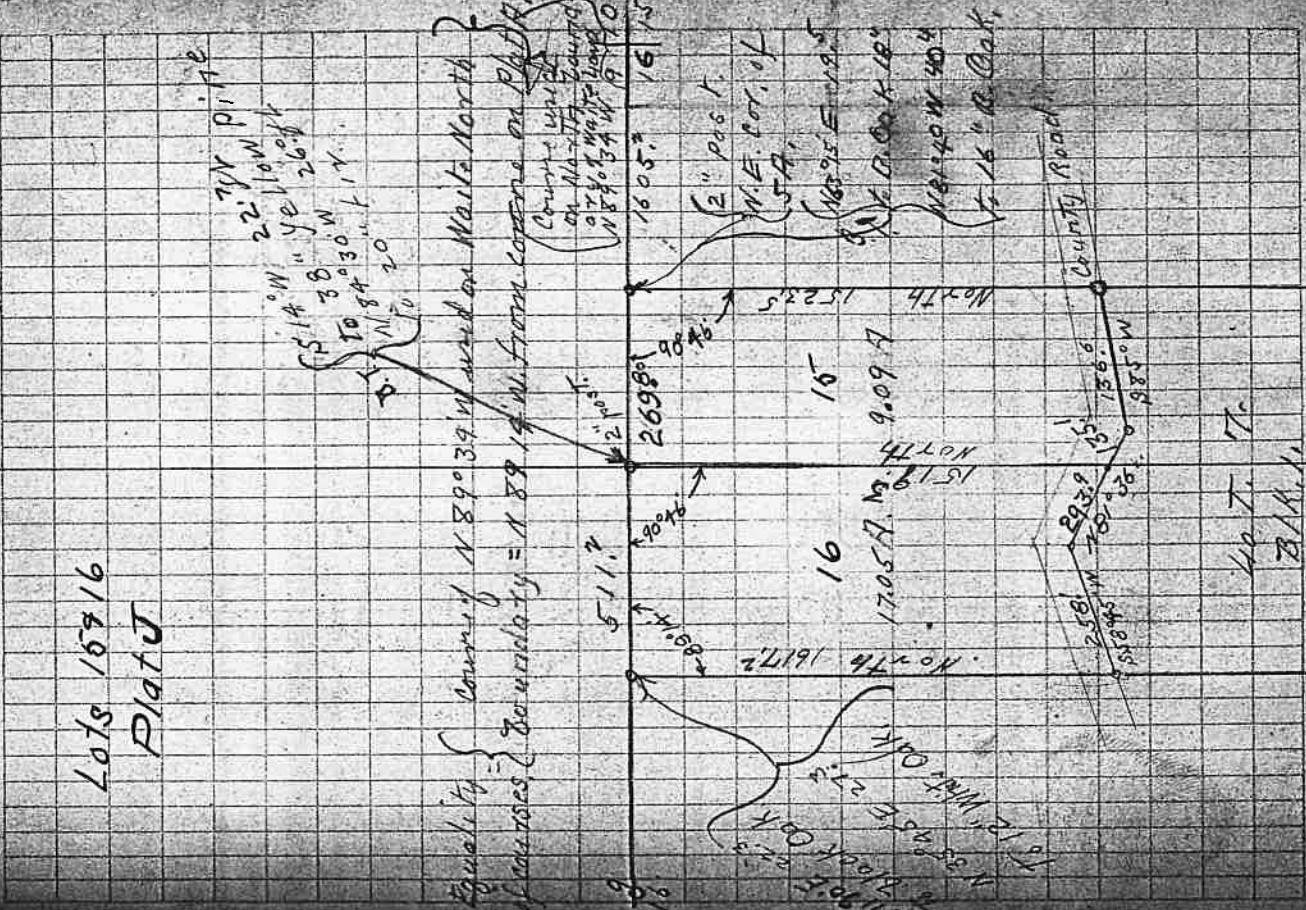
Lots 16716
 Plat J

Equality of courses } County 189°39' and on Mark North
 of courses } Equality = 189 1/4 N. from course on Plat A.

2 1/2" W. Pine
 514° W. yellow
 38° W. 26.0 ft
 To 84° 30' W. 17.0 ft
 20

County road
 on 110-117
 at 403 Mark
 189°39' W. 19.0 ft

2" P.O.C.
 N.E. CO. of
 5A
 189°39' W. 19.0 ft
 16.00 x 18.0
 181°20' W. 40.0
 16" R. Oak



40T. 7.
 BIK. 1.
 Plat A.

15 + 235
 13 + 18.3
 10 + 969
 5 + 81.8

North

0° 30'

0° 15'

0° 15'

N.E. Coy
 Plat J. BIK. 1. Plat A

North

Plat J.

1-24-11.

345° E. 67.0 ft
to 10" pine
On West line 47.2 ft
N 06° W 71 + m Balloch

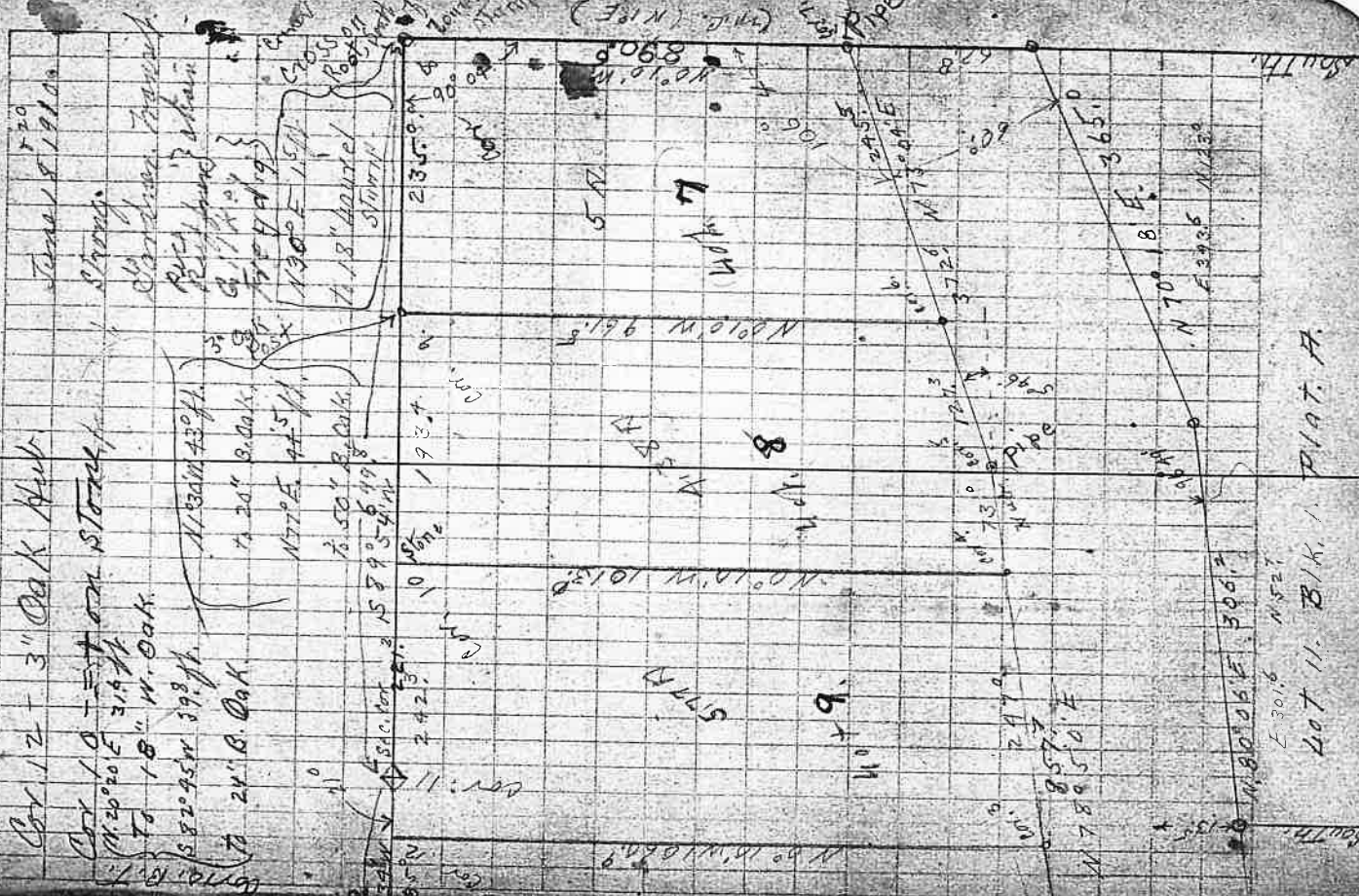
The far cor. l.

T. 258 R. 5 W.
N. 89° 34' W 306.9 10
11. 1125
16 15
15

Lots 7-8-9-10 Plat J.

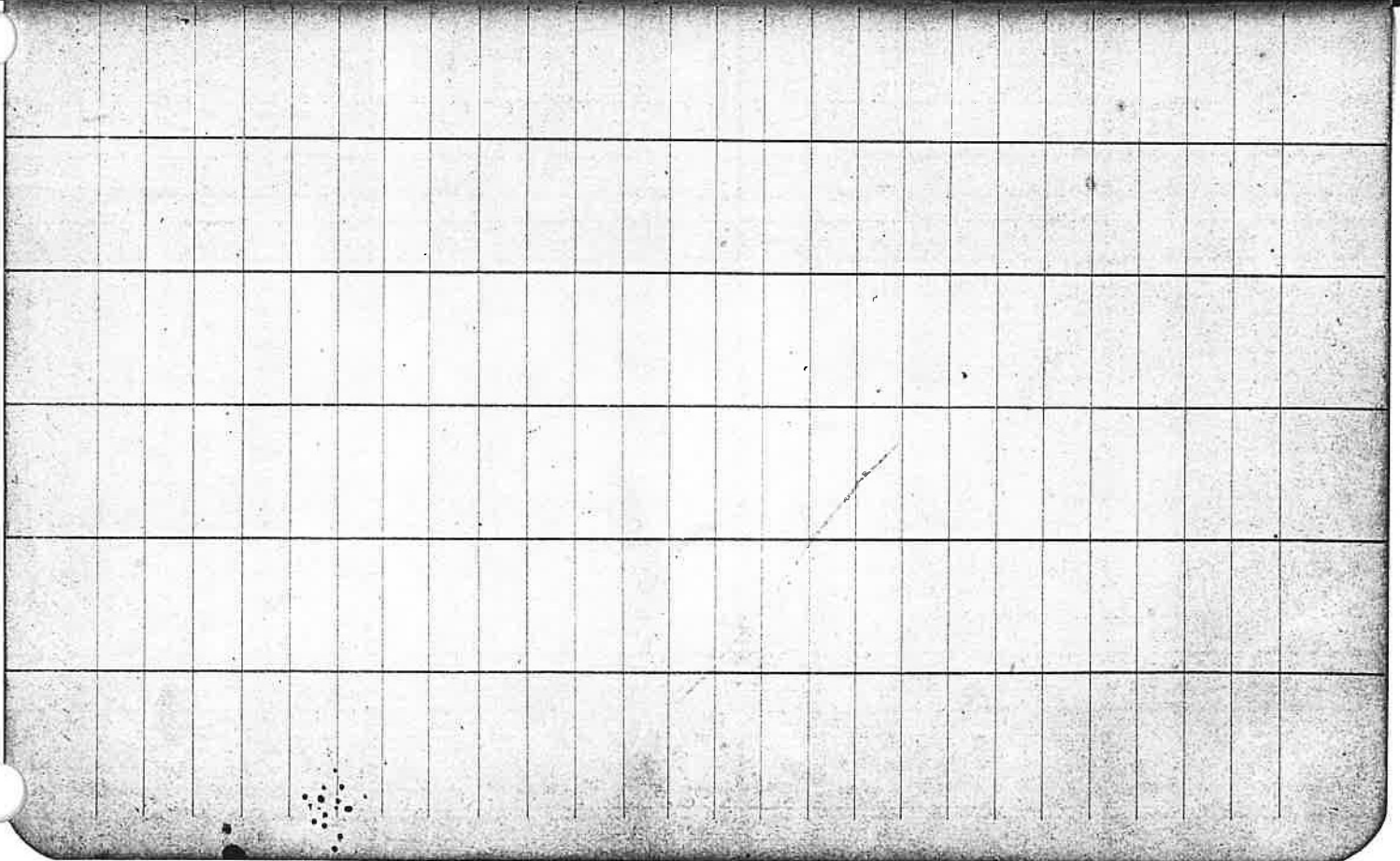
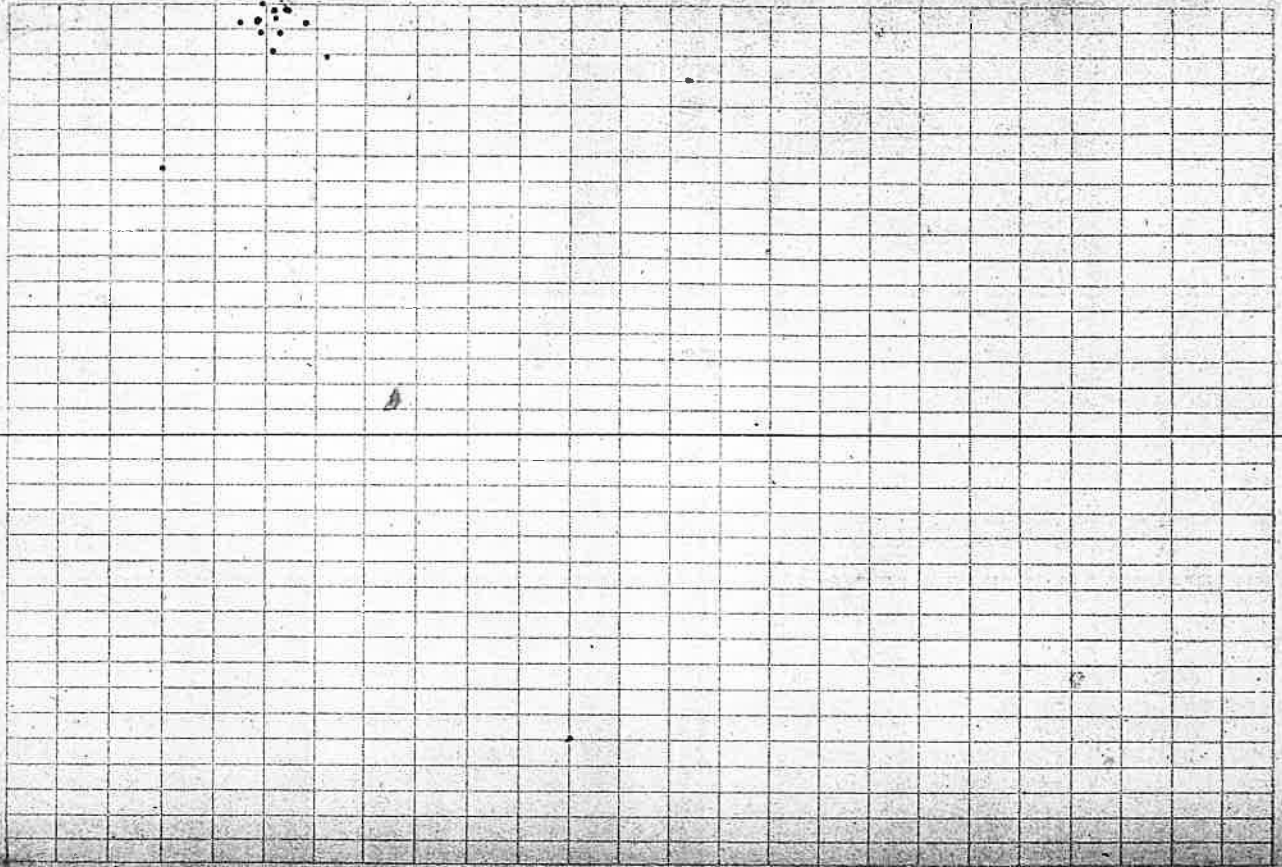


Timber, North, Lot 11 & East part Lot 10



Lot 11. BIK. 1. Plat. A.

57.



June 25 - 1910



Sta.	Dist	Line	North	Dot 2	RMG
22 + 65.8					
21 + 45.7	June 27 - 1910			N 0° 31' E	N
Hub w of line 18 + 80.2	End Here	June 25 - 1910		N 0° 31' E	N
			00° 30'	N 0° 46' E	N 15° E
16 + 14.7				N 0° 16' E	N 15° W
Hub 14 + 65.6				N 0° 31' E	N
Hub 12 + 85.7					N
Hub 11 + 29.0					N
Hub 9 + 91.9	991.1				North
Hub 7 + 86.9	786.9				North
Hub 5 + 95.9	595.9				North
Hub 3 + 95.4	395.4				N 00° 30' W
0 + 00				N 0° 31' E	North

600
519
Sta 9 SFA Spadstone
County Road
OAR for Post NW Cor Lot 2
B11 Plot A

N 71° E Cor. Lot 2 Bk. 1, Plat. N.

West Part of Lot 3



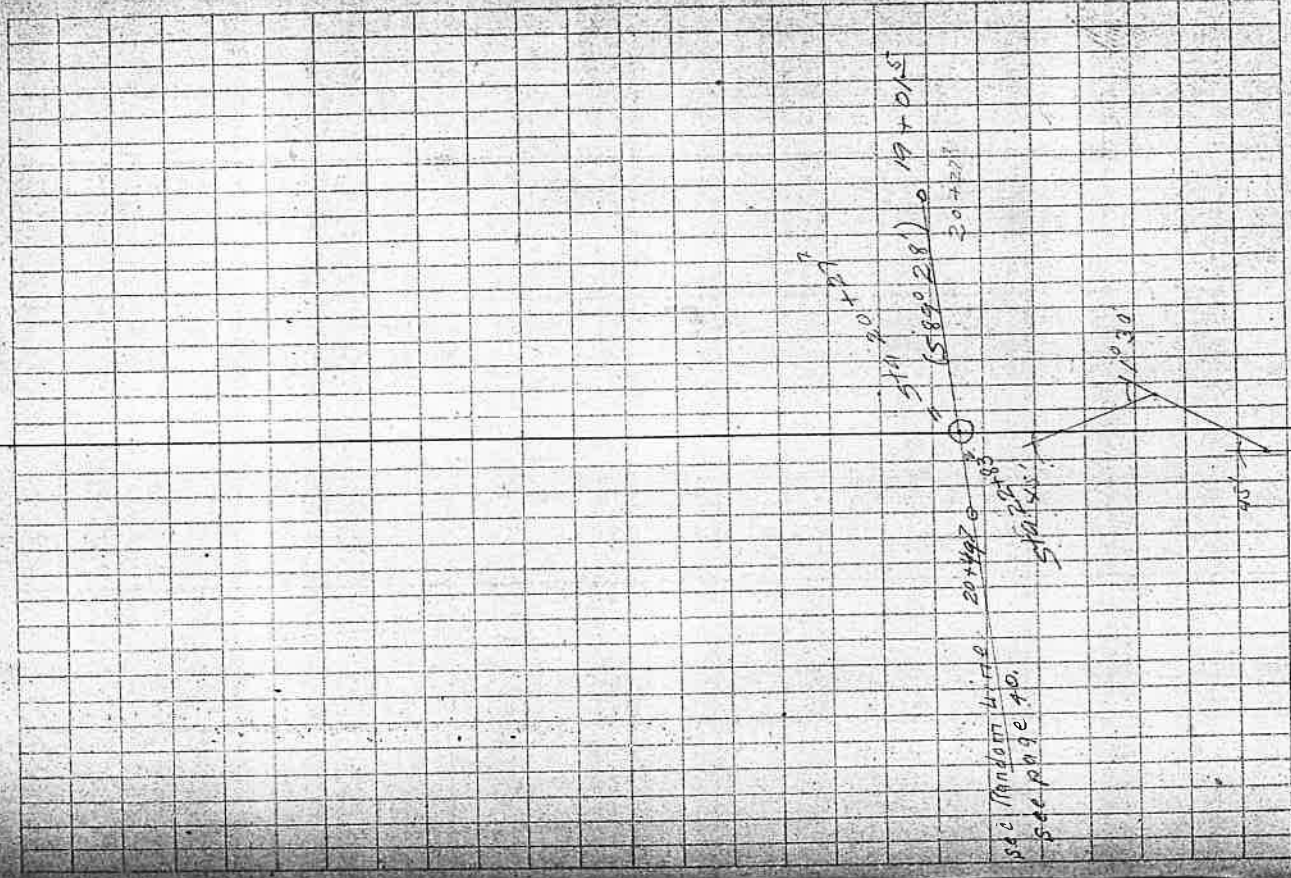
Sta	Dist	4 L	4 R	C.C.	Bk. 1	Lot 2	and
19+896			00° 45'	N 45° W			M.C.
446 17+923			00° 29'	N			N
140 16+40.5	151.5	00° 29'	N 39° W				N 1° W
440 15+10.9			N				N 30° W
446 12+91.6			N				N 30° W
11+23.2							N 30° W
9+59.3							N 30° W
7+24.2							N 30° W
4+37.5							N 30° W
1+2+16.9							N 00° 30'
0+00 of A Line 7+83.5		77° 05'					N 30° W
0+00		103° 26'					N 77° 05' E
5.5 Bk. 1 Plat. N							S 31° W

June, 88 Cool, Cloudy

5180 Post in random
76 26

Mancho Post 181346.
Line to mancho 80° 03' 2"

part 4 of 3.



Triber North Plat A B/K. 1. Lot 2. West

Sta. Dist. ΔL ΔR

22+62	90° 31'	589.9'	North	N 45° W
22+44.7	00° 45'		North	N 45° W
2166.6	1° 30'		N 45° E	N 1° E
19+89.6				

Full Land North Plat A.
 South Boundary
 AL AR C.C. M.C.

Stone	Dist opp. bridge at bridge	North 18.0	178° 50' E	N 78° 50' E	N 78° 50' E
Stone	18.0				
Stone	913.4	80° 30'	167° 58' E	N 67° 58' E	
Peg N of ME corner	109.3				
Stone	477.3	23° 48'	N 76° 28' 4	N 76° E	
Peg	383.5	00° 33'	579° 44' E	S 80° 30' E	
Stone	944.4	53° 31'	580° 16' E	S 80° 30' E	
Peg	850.6	15° 53'	N 46° 13' E	N 46° 13' E	
Peg	525.0				
Stone	0	5° 28'	N 62° 07' E	N 61° 30' E	
Peg	232.1	4° 59'			
Stone	1435.5	11° 13'	N 70° 35' E	N 70° E	
Peg	143.4				
Stone	196.8	6° 38'	N 81° 48' E	N 81° 48' E	
Peg	102.5	29° 11'	N 75° 10' E	N 74° 10' E	
Stone	1070.9		N 46° 00' E	N 46° 30' E	
Peg	191.3	28° 38'	N 46° 37' E	N 46° 30' E	
Stone	374.76	05° 12'	N 75° 16' E	N 75° 16' E	
Peg	199.0	10° 38' ?	N 75° 28' E	N 75° 20' E	
Stone	148.6	00° 40'	584° 33' E	S 88° 3' E	
Peg	148.6	14° 48'	585° 13' E	S 88° 30' E	
Stone	918.4		N 80° 08' E	N 79° 20' E	

Stone	109.3	577.57	109.3	577.57	109.3
Peg	477.3	477.3	477.3	477.3	477.3
Stone	944.4	944.4	944.4	944.4	944.4
Peg	850.6	850.6	850.6	850.6	850.6
Peg	525.0	525.0	525.0	525.0	525.0
Stone	0	0	0	0	0
Peg	232.1	232.1	232.1	232.1	232.1
Stone	1435.5	1435.5	1435.5	1435.5	1435.5
Peg	143.4	143.4	143.4	143.4	143.4
Stone	196.8	196.8	196.8	196.8	196.8
Peg	102.5	102.5	102.5	102.5	102.5
Stone	1070.9	1070.9	1070.9	1070.9	1070.9
Peg	191.3	191.3	191.3	191.3	191.3
Stone	374.76	374.76	374.76	374.76	374.76
Peg	199.0	199.0	199.0	199.0	199.0
Stone	148.6	148.6	148.6	148.6	148.6
Peg	148.6	148.6	148.6	148.6	148.6
Stone	918.4	918.4	918.4	918.4	918.4

Set N Lot 131A
 100' on Ch. 2. 580' 1/2 S. 1/2

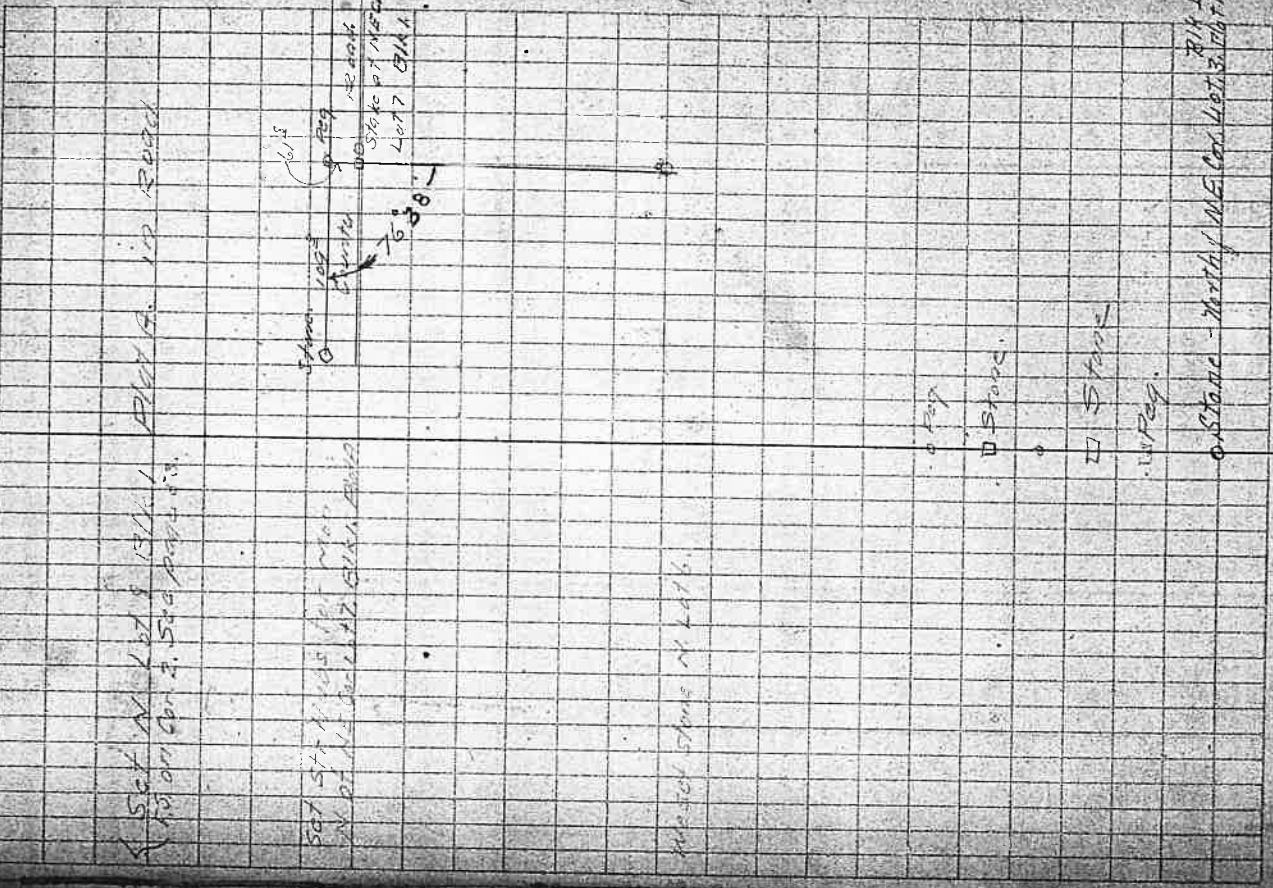
577.57 - N 109.3
 477.3 - N 477.3
 944.4 - N 944.4
 850.6 - N 850.6
 525.0 - N 525.0

Stone 109.3

Stone - North of ME corner

Hill Land North Plat A
 South Boundary
 AL 4 R C.C. M.C.

Sta	Dist	To	Angle	Bearing
Stone 1	188'	N 78° 50' E	N 7° 30'	N 7° 30'
Stone	913 1/2	8° 30'	N 67° 58' E	N 67° 58'
Peg N of M.E. Cor Lot 7	109 1/2			
Stone 2	477 1/2	23° 41' 8"	N 76° 28' 4"	N 76° E
Peg	383 1/2	00° 33'	S 79° 44' 1/2"	S 80° 30' E
Stone 3	944 1/2	53° 31'	S 80° 16' E	S 80° 30' E
Peg	850 1/2	15° 53'	N 46° 13' 1/2"	N 45° E
Peg	525 1/2			
Stone 4	232 1/2	8° 28'	N 62° 07' E	N 61° 30' E
Peg	1435 1/2	11° 13'	N 70° 35' E	N 70° E
Stone 5	196 1/2	6° 38'	N 81° 48' E	N 81° E
Peg	102 1/2	29° 11'	N 75° 10' E	N 74° 40' E
Stone 6	100 1/2	00° 37'	N 46° 00' 1/2"	N 46° 30'
Peg	413 1/2	28° 38'	N 46° 37' 1/2"	N 46° 30' E
Stone 7	191 1/2	00° 12'	N 75° 16' E	N 75° E
Peg	199 1/2	1° 38'	N 75° 28' E	N 75° E
Stone 8	48 1/2	00° 40'	S 84° 33' 1/2"	S 84° E
Peg	148 1/2	14° 45'	S 85° 13' 1/2"	S 85° 30' E
Stone 9	918 1/4		N 80° 03' E	N 79° 30' E



Stone - North M.E. Cor. Lot 7, 10/17/11
 Peg

Sta. Hill Land South boundary
 Dist. North of Plat A, C.G. M.C.

M.E. Coy.
 Stone Plot H.

601.8

Oak Post N
 01679 Rail Road
 Stone Post
 Rail Fence.

76° 49'
 00° 23'

89° 47'

S88° 32' E

N00° 14' E
 N77° 03' E
 N76° 15' E

13732

11 29

30

N77° 26' E
 N77° 10' E

Stone N.
 134 1/2

290 Y

25 54

5

N88° 36' E
 N88° 30' E

303 1/2

1770

30

59° 21'
 30

Stone
 0.0

18° 13'

30

565° 09' E
 N55° 24' E
 N5° 50' E
 N78° 04' E

Set of
 Cur 7, 8, 5, 6, 7, 8

500, 500

Set 6

N77° 31' E

4° 18' angle to stone at road Whitey place

Set 13 marked on E side Stone.



Sta.	Dist.	AL	AR	CC	M.O.
Line of 30' Ave. N. 1/4					
Stops 62+86.2	466.1	82°38'		N76°50'E	N76°10'E
68+20.4	245.2	130°42'		52°32'E	52°10'E
69+04.9				56°45.0E	
73+67.1	0' 00'	0' 00'		56°50'E	57°20'E
74+60.4	30' 14'			56°50'E	57°20'E
79+41.3	623.5	132.2		53°36'E	54°00.5
83+18.5	2318.5	80°13'		59°47'W	59°35'W
89+52.6		June 30 - 1910			58°25'
89+86.2		June 30 1910			58°30'W
77+55.5					58°30'W
Stumps				West	58°30'W
5+45.2		00°14'			
69+69.0			00°14'	N89°45'W	58°00'W
77+67.4				West	58°30'W
0+00		June 29 - 1910	Warm		
Stops	0+00	Stops 24+75.2			Timber Line
		N Lot 2 (N.W. Cor.) Blk 1, Plat A			

5°44'
130°06'

Measurement for 3MN and State St

S.P.R.R.

Parallel of St 76

Pay on this line
from State St + 18' W
1/4 S of 1/4 Right of way
85' E of RR track.

33'

At 254 1/2 West point
on S. Line Comparison No.
24000 - 24000
We set point on
the line of State St
15 months of time point

Pay on this line
from State St + 18' W
1/4 S of 1/4 Right of way
85' E of RR track.

Edge of and Timber
Line W. through Timber

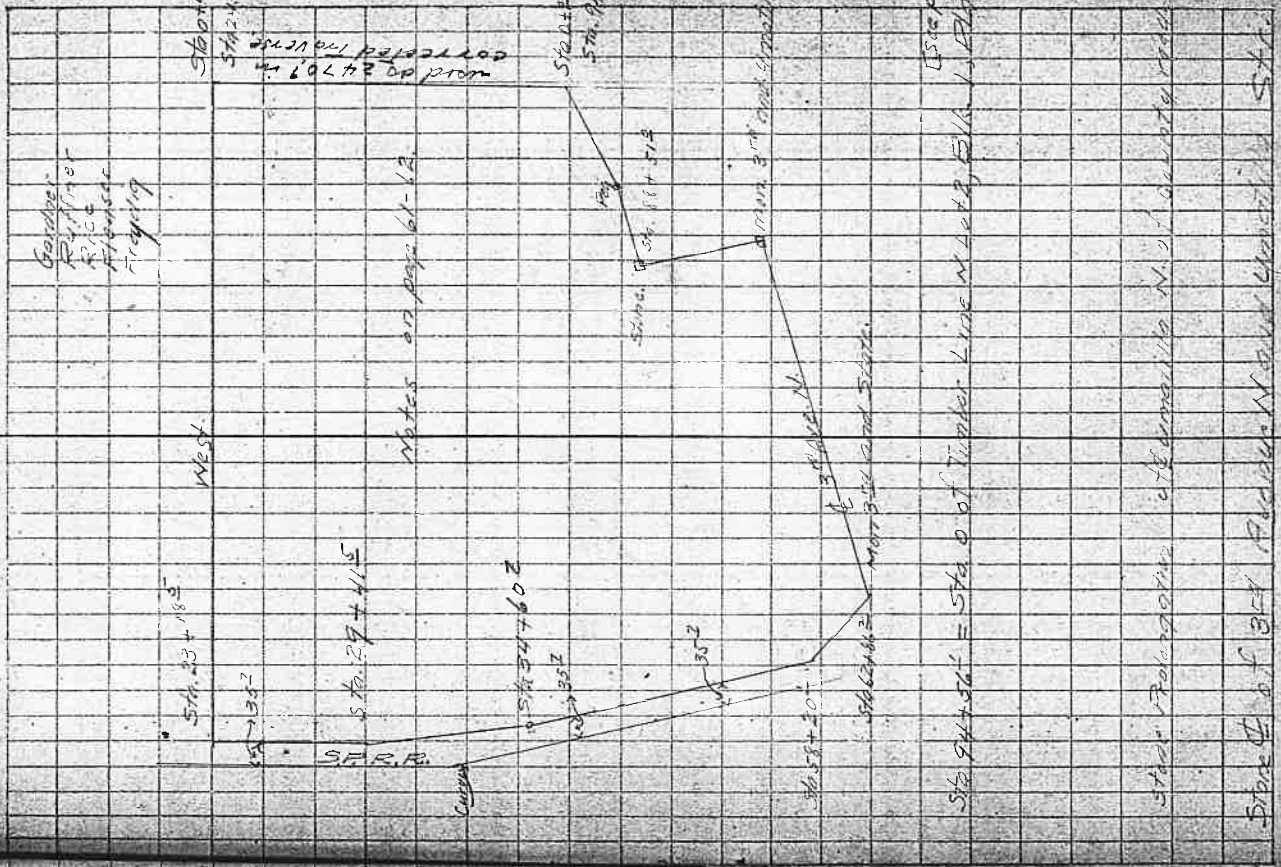


Timber line N Lot 2 (N.W. Cor.) Blk 1, Plat A
Stops 24+75.2

91' 7"

Tract North of Townsite
 Sta DIST ΔL ΔR C.C. M.C.

Sta 84+56' 390.5 75° 57'
 Sta 90+65' 214.6 00° 19'
 Sta 88+51' 963.9
 Sta 87+80' 1661.8
 N00° 34'E
 N76° 31'E
 N76° 50'E N76° 00'E
 N13° 10' W N13° 15' W
 July 1 - 1910.



Gossett
 Rymer
 Rice
 Althouse
 Freyling

West

S 76° 29' + 41° 5'

S 76° 29' + 41° 5'

Sta 84+56

Sta 90+65

Sta 88+51

Sta 87+80

Sta 84+56 = Sta. 0 of Upper Line W. L. P. 3. E. L. 1. PLATA

Sta 1100 = Sta. 14752

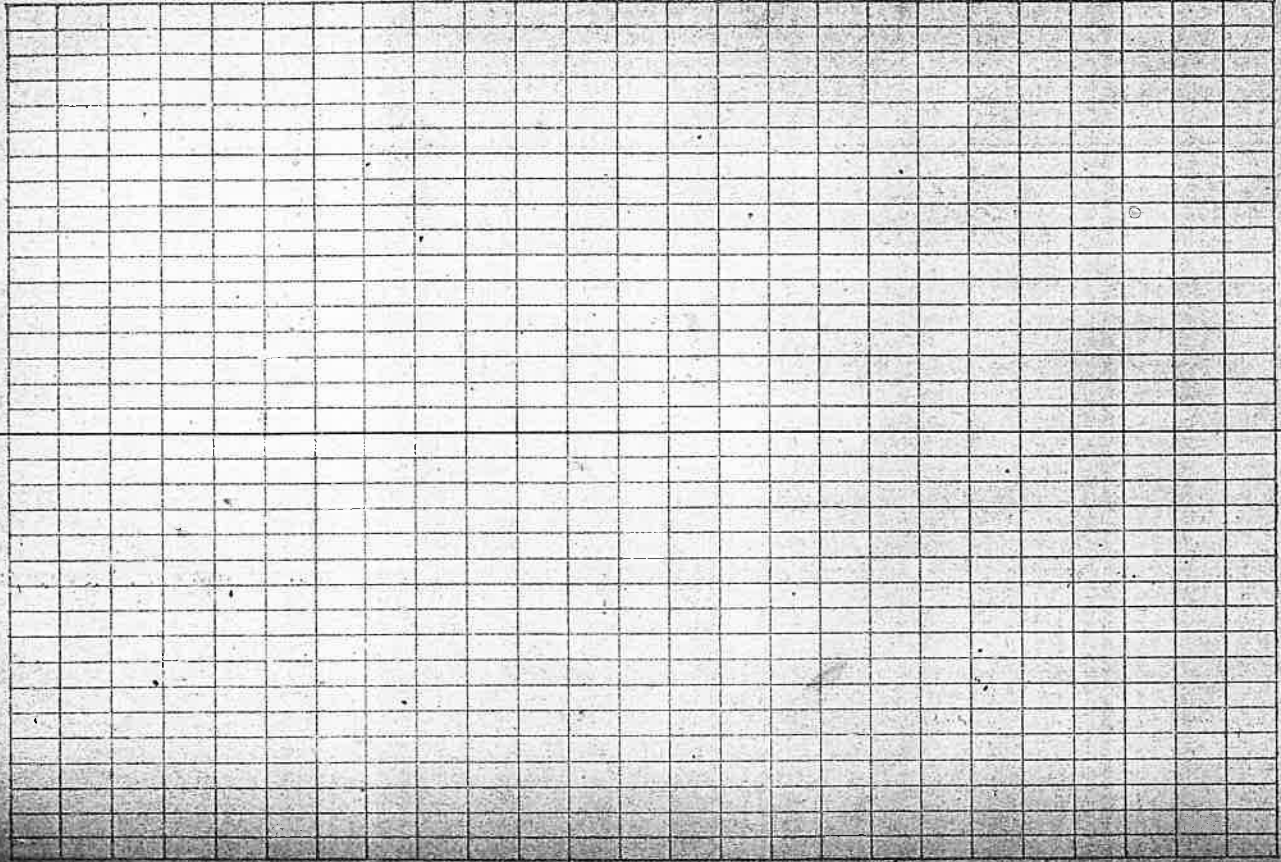
Sta 1000 = Sta. 14752

Notes on page 61-62

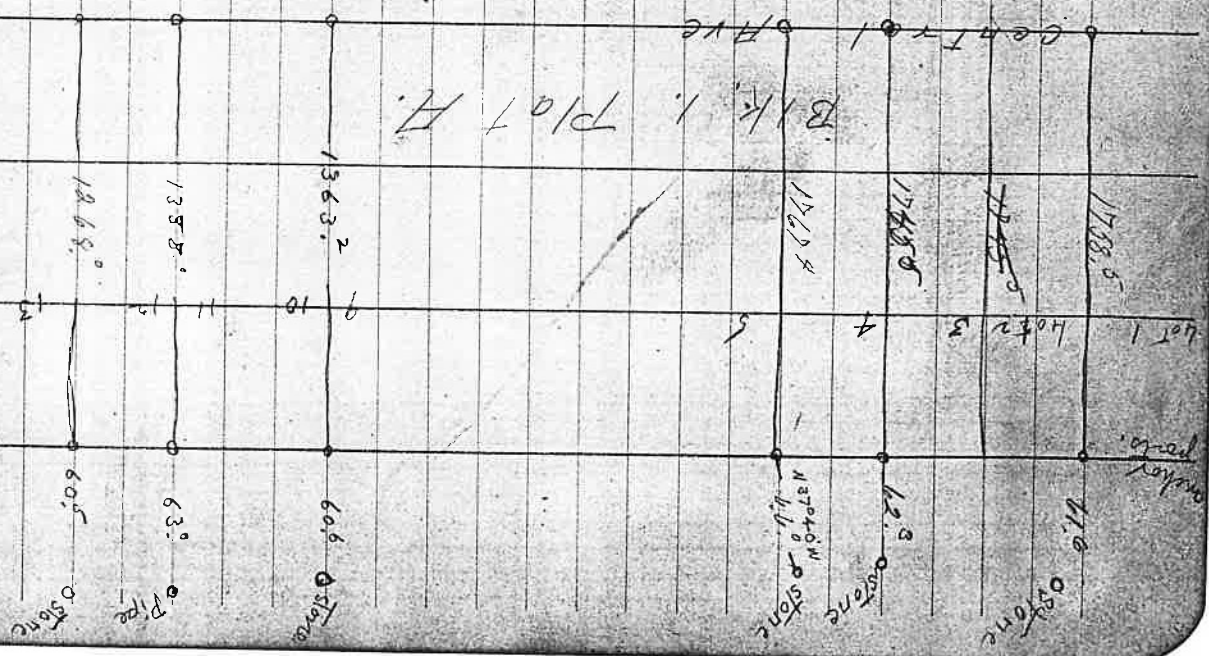
Word at 2470' m corrected in 1910

Sta 84+56 = Sta. 0 of Upper Line W. L. P. 3. E. L. 1. PLATA

Sta 84+56 = Sta. 0 of Upper Line W. L. P. 3. E. L. 1. PLATA

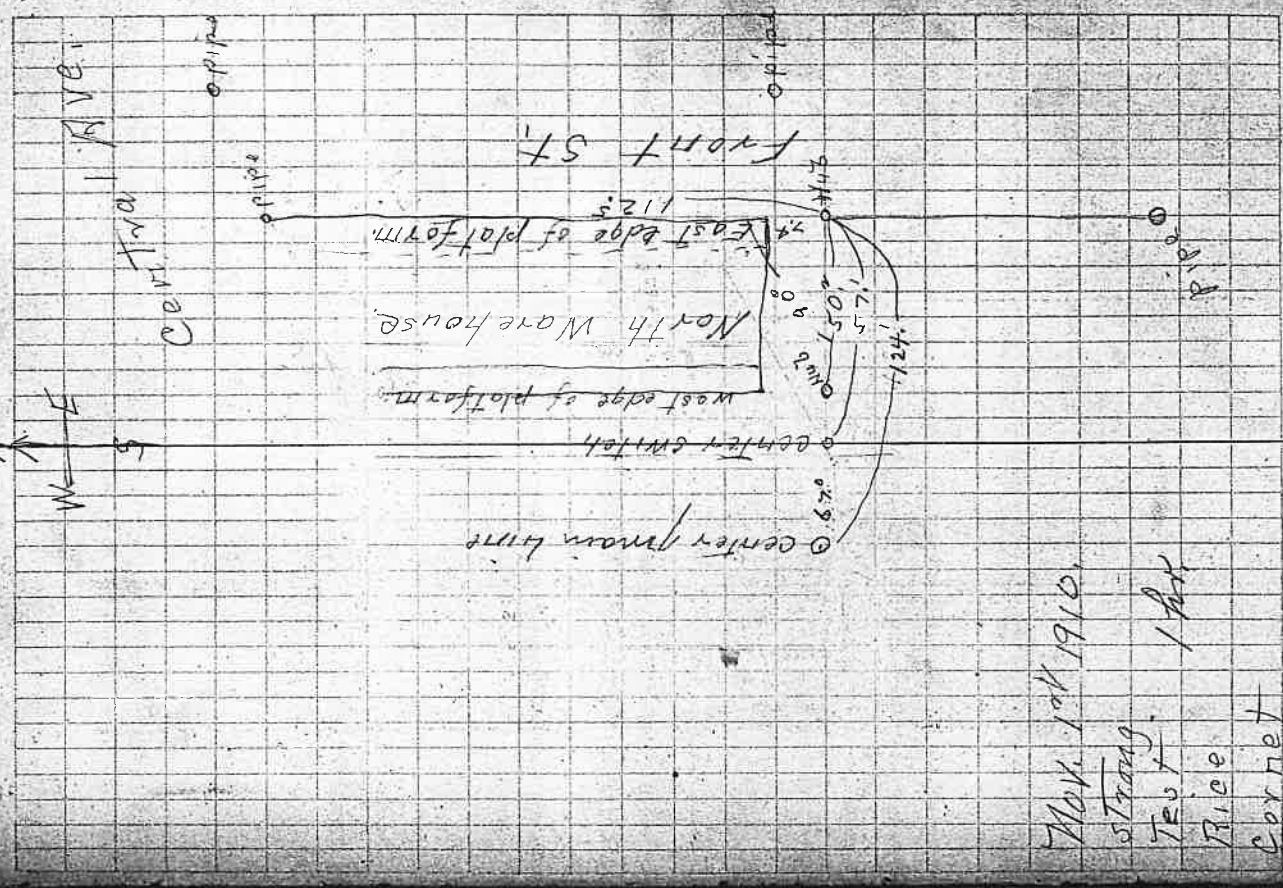


Plot A. B.K.



Fence Lines for
 Lot 9. B.K. 7. Plat I.
 Strong }
 Rice } May. 2nd 1910 3 1/4 hrs.
 Test } (5.00 P.M. to 10.15 A.M.)
 Kelly }

North Warehouse,



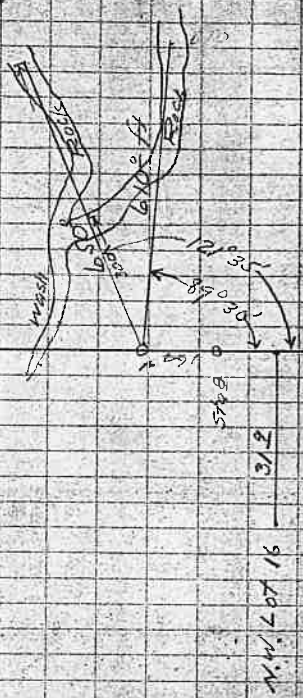
Sta	Transverse of County Road	DIST	AL	A/R	C.C.	M.C.
19	at on stone 7 feet					
18	stone near Hammes	132.8		24'	567° 18' W	566° 45'
17	Play pit ditch		49'		566° 54'	566° 36'
	Iron pipe 13562			2° 56'	567° 43' E	567° 0' 50"
	16 in x Co. Road				54° 47' W	569° 20'
	and Devils Lane					
	2314					
15						
	Gross in large stone in Ditch Bank	5812				
14				35° 21'	565° 01' W	564° 30' W
13		6903	25° 27'		529° 40' W	529° 55'
	iron pipe	4282				
12						
	iron pipe	4027	3° 48'		554° 57' W	554° 45' W
11						
	iron pipe	11651	0° 34'		558° 45' W	558° 20' W
10						
	iron pipe	7997				
9						
	iron pipe	1000				
8				7° 56'	559° 19' W	559° 0' W
	iron pipe	1889				
7						
	iron pipe	4548	2° 46'		567° 15' N	
6						
	iron pipe			13° 15'	570° 21' W	569° 55'
5					556° 46' W	

From page 42.

Spikes in
BEST.

East. 253 X Class on bed rock near Flump
Spikes in
BUNT.

Area past 9
N.W. Cor. 503
Lot 5 Block 3



Sta 5 = Sta 5 sec page 42.

A large grid of 20 columns and 20 rows, typical of graph paper. The grid is composed of thin, light-colored lines forming a uniform pattern across the upper half of the page.

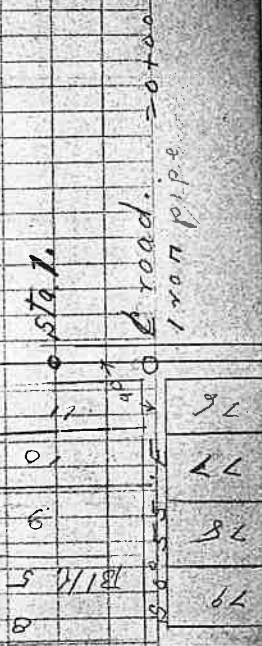
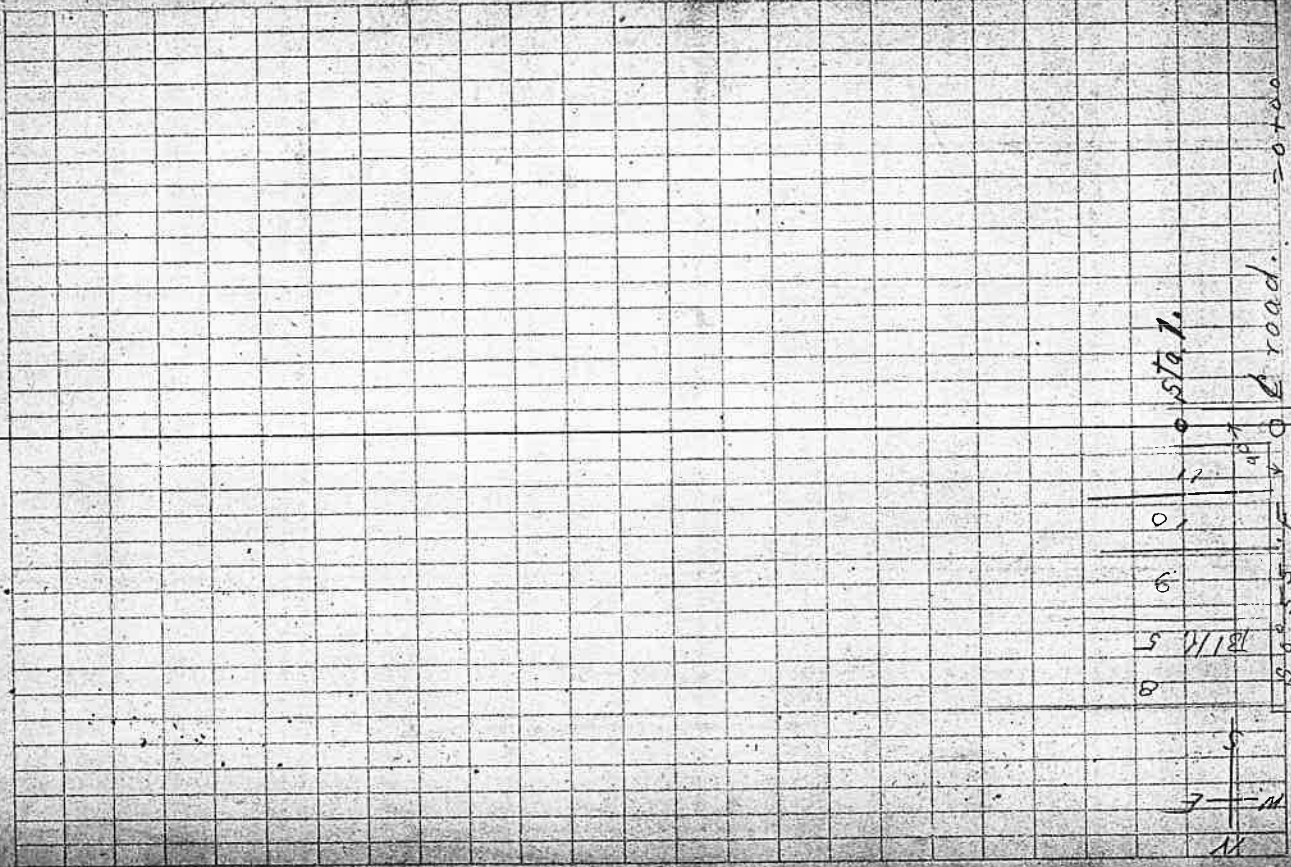
A large grid of 20 columns and 10 rows, typical of graph paper. The grid is composed of thin, light-colored lines forming a uniform pattern across the lower half of the page.

Traverse Road Plat I.
 STA DIST AL ΔR C.C. M.C.

Field.

(Corrected Traverse figured from these notes)

7					
6	764			41° 31' S 2° 14' W 51° 40'	
5	284 ±	28° 51'		S 39° 14' E 53° 00' 40"	
4	380 ±	33° 19'		N 10° 26' E S 10° 40' E	
3	306 1/2			13° 01' S 22° 53' W 522 25 W	
2	233 2			16° 59' S 9° 52' W 59° 25' W	
1	228 3			83 48 S 7° 01' E 57° 34'	
0	187 6	90°		N 89° 05' E S 0° 55' E	



79
78
77
76

Everveys Made

T. 25 S. R. 9, 396 N

Townsite }
Plat. A. } course
Plat. C. }

(Waitohon
Plat. E.
Minnford.
Becky Goff
Geel

North
N. 0° 14' W

in 1910.

Equation of Courses.

Crouch
Survey

& all
Surveys.

East of

Norton & Whitney

Warre

Except the

Subdivisions

North of county

Road north of

II 1 & west

of county road

Consider flume.

All surveys.

West of Whitney

& Norton Survey

Except Plat. A.

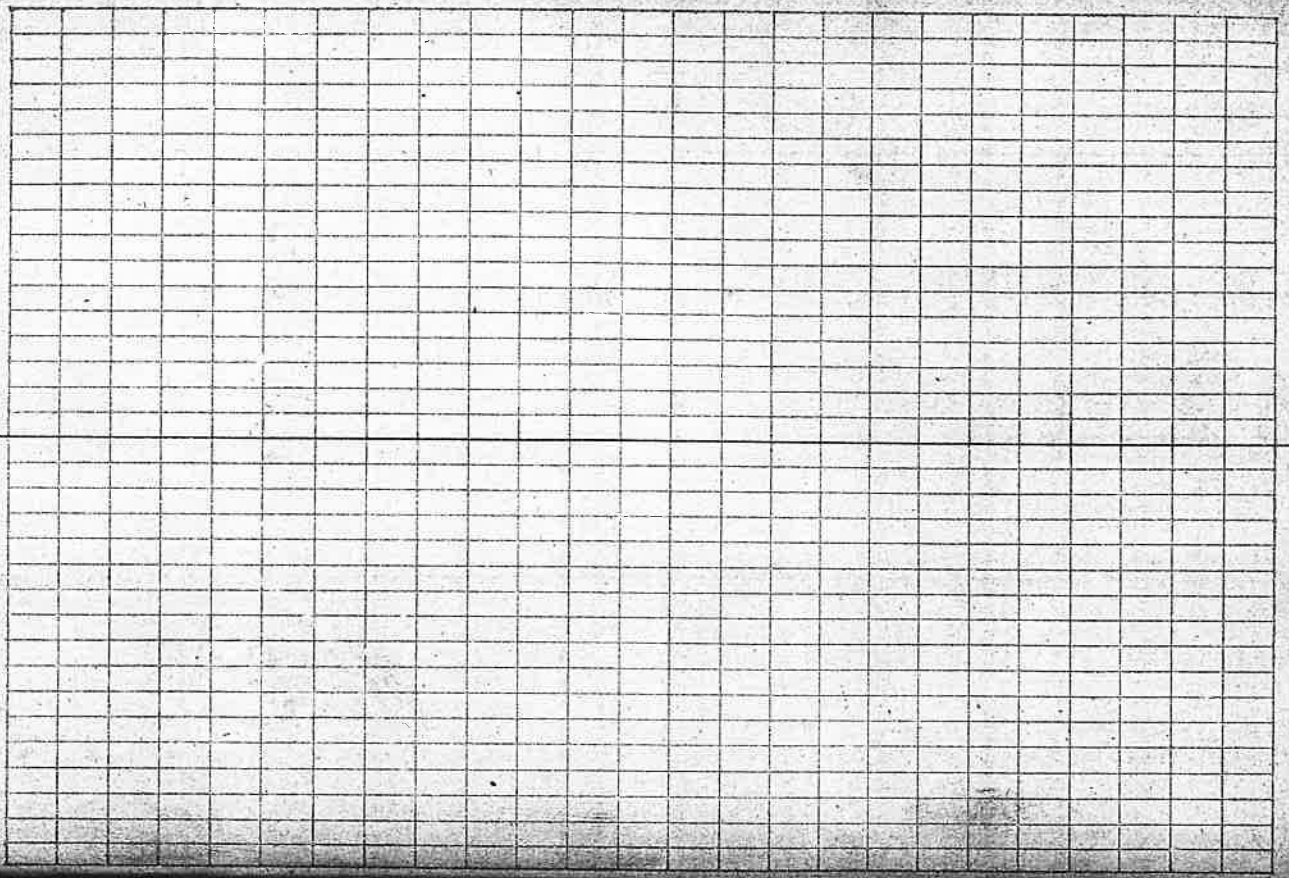
Plat. C. & town

site

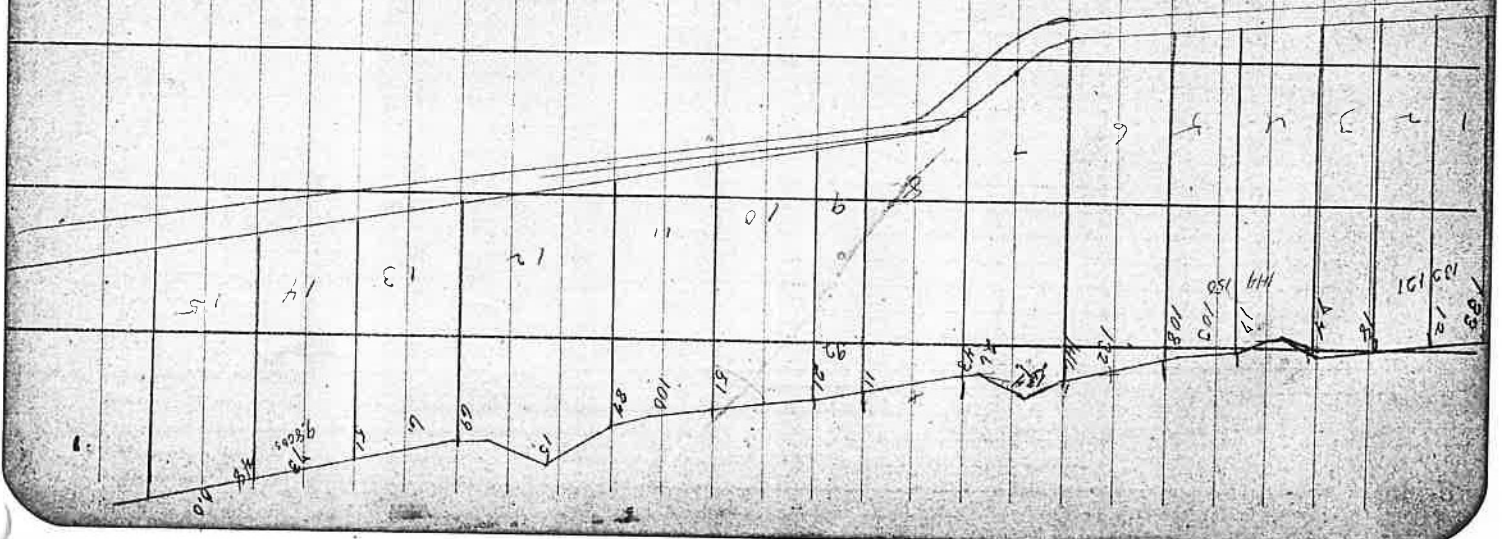
West
N. 0° 09' W

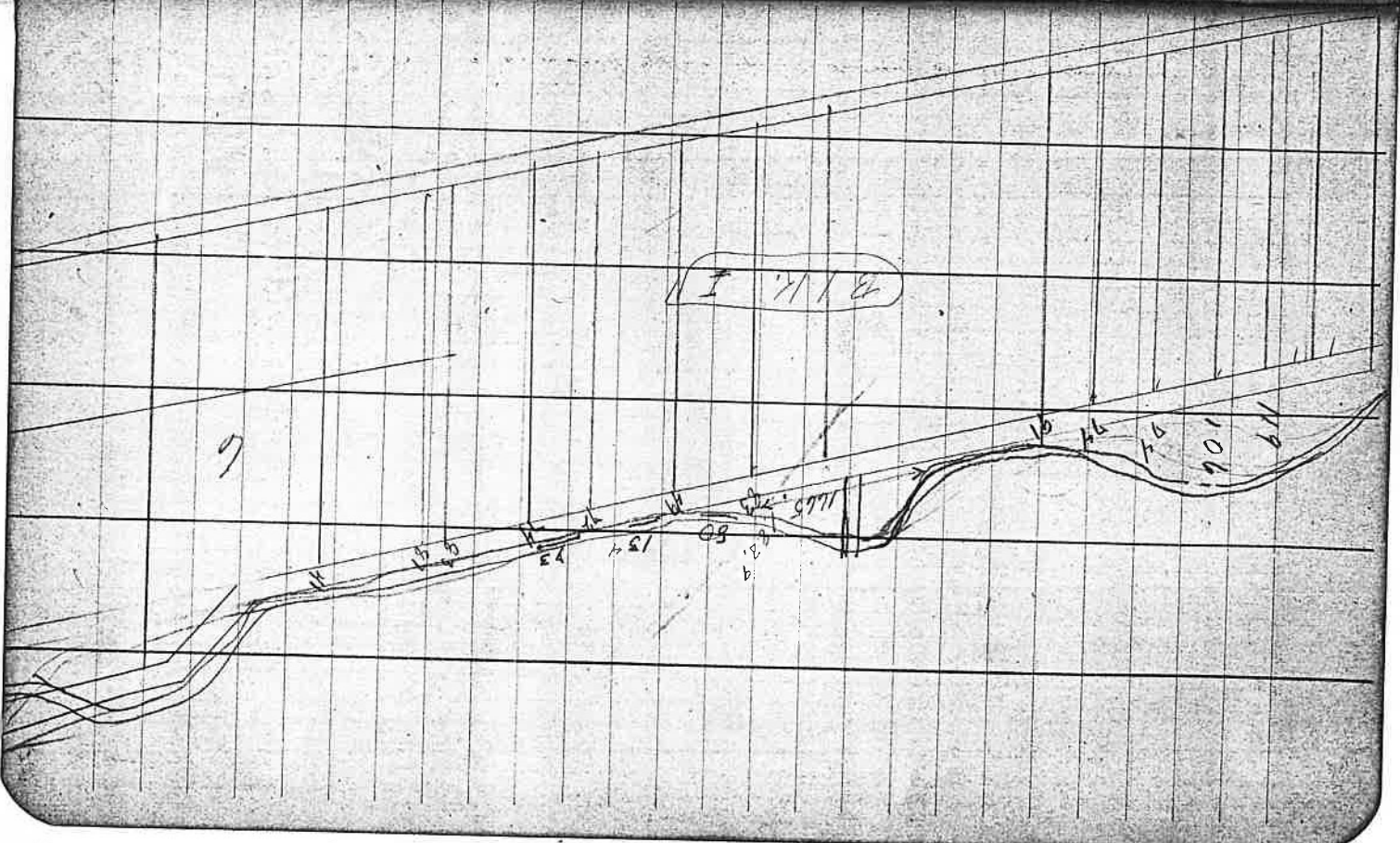
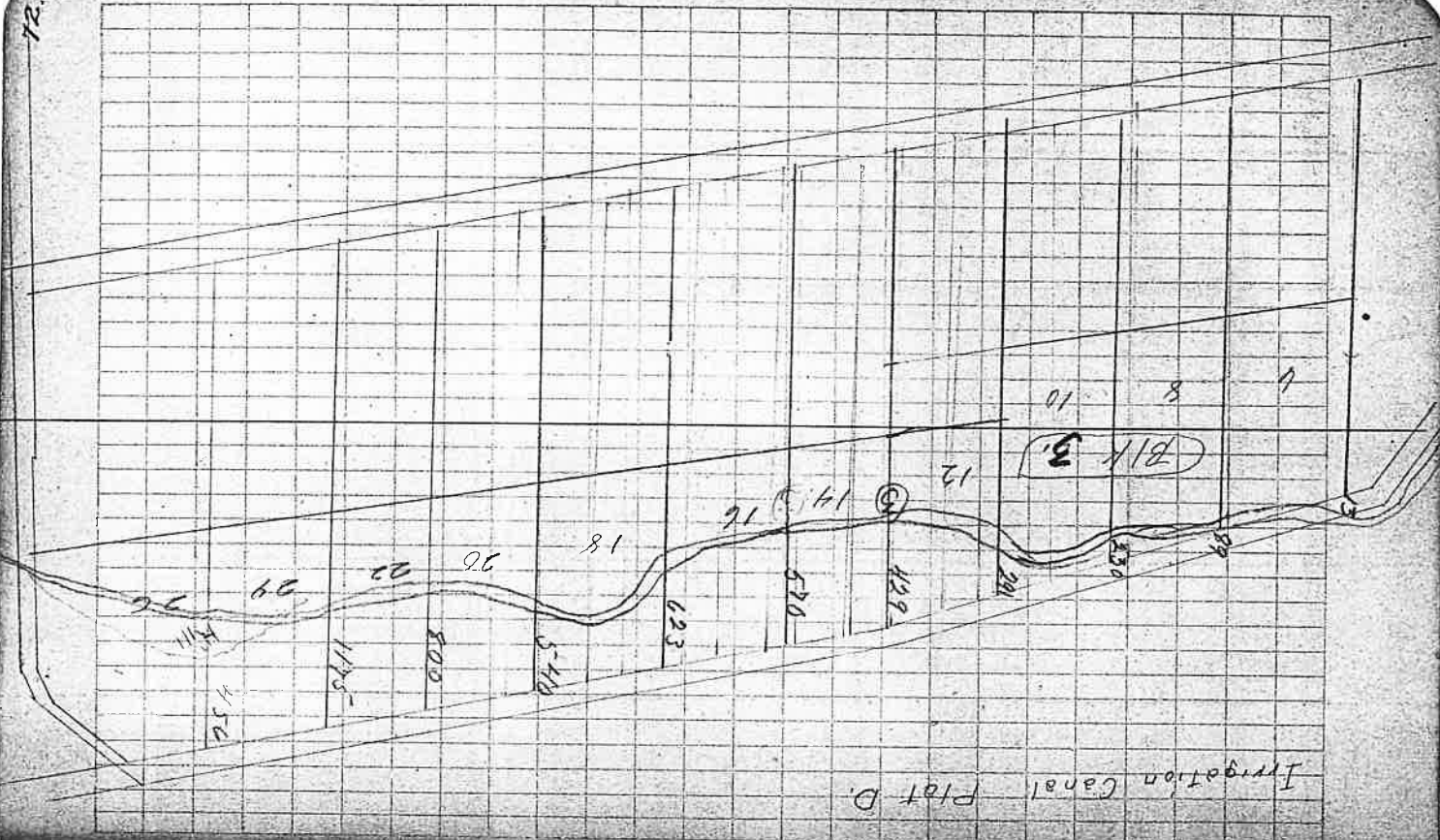
A large grid of 20 columns and 30 rows, typical of graph paper used for technical drawing or mathematics. The grid is composed of thin, dark lines forming small squares. The top page of the notebook is otherwise blank.

A ruled page with 20 vertical columns and 10 horizontal rows. The lines are evenly spaced, creating a ledger-like format. The bottom page of the notebook is otherwise blank.



B. K. I.
Irrigation Canal Plot A





	E	N	S
90.9	603.3	2673.7	1343.3
68.2	4715.12	2885.4	5290.9
15.9	5318.5	5359.6	5034.2
2483.4	18.5	18.5	6626.0
624	2.59116	4.11	5.2
	93358	41013	502248
	177	7652.4	2611.4
	186486	86.5	334882
	137	180716	83708
	260.2	630358	12030468
	40.5	772192	
	178.5	8048326	
	214.1	746413	
	1082577		
	118.8		
	6600	223932	
	6600	37022	
	825.07	4642	
	8977	78600	
	4176	92859	
	912.2	251	
	118.8	93170	
	826	92859	
	7108	251	
	2376	92859	
	9504	464295	
	98.12	185718	
	23307609		
	447.3	2640	
	233.4	2617	
	68	29073	
	826.6	1947	
	167.2	273511	
	2714.2	156592	
		39073	
		4090942	
		167	
		27482	
		23552	
		3926	
		91971	
		1167	
		643797	
		551826	
		91971	
		91971	
		1073130157	

V Δ 31035'	256 = 2181			
V Δ 25051'	69.5 = 62.5			
V Δ 23025'	82 = 78			
V Δ 18026'	267.6 = 253.9			
V Δ 26° 37'	100 = 89.4			
V Δ 30° 25'	100 = 90.9			
V Δ 24° 38'	100 = 173.5			
V Δ 28° 17'	193.5 = 143.6			
V Δ 34° 20'	200 = 98.1			
V Δ 21° 11'	98.9 = 86.5			
V Δ 24° 20'	98.9 = 86.5			
V Δ 15° 19'	86.5 = 91.5			
V Δ 20° 48'	111.5 = 155.5			
Δ 4 + 25.22'	172.2 = 155.5			
Δ 4 + 21.047'				
S. Y. Spr Thule.	912.2			N 0° 20' W
By phone.	1047.0			N 0° 01' W, N 0° 15' W
				N 67° E
				N 67° E, N 66° 45' E
				N 66° 53' E, N 66° 30' E
				N 89° 58' E, N 89° 40'
				S 0° 15' E
				S 0° 13' W

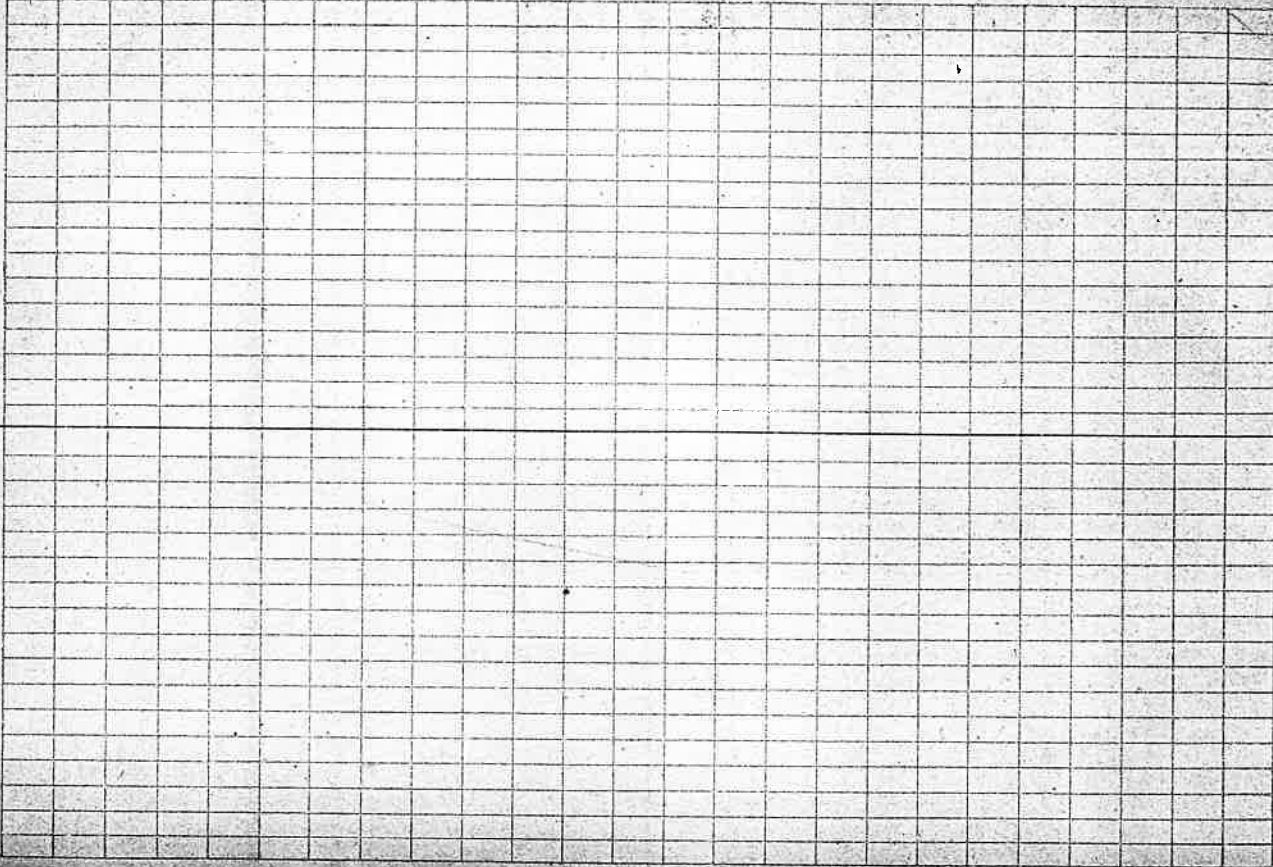
N. W. Hall

N. W. Hall

N. W. Hall

N. W. Hall

N. W. Hall



42 + 19 = 61

37 + 70 = 107

36 + 86 = 122

35 + 60 = 95

34 + 38 = 72

33 + 74 = 107

32 + 38 = 70

31 + 52 = 83

30 + 93 = 123

29 + 81 = 110

28 + 29 = 57

26 + 64 = 90

26 + 118 = 144

25 + 103 = 128

24 + 48 = 72

23 + 54 = 77

22 + 34 = 56

21 + 03 = 24

19 + 83 = 102

KEITH'S RAILROAD CURVE TABLES.

Published by KEUFFEL & ESSER CO., New York.

Entered according to Act of Congress in the year 1883,
by W. Keuffel & H. Esser, in the office of the Librarian of Congress,
in Washington, D.C.

Copyright, 1902, by Keuffel & Esser Co.

HOW TO USE KEITH'S TABLES.

EXAMPLE.

Wanted a Curve with an Ext. of about 12 ft. Angle
of Intersection or I. P. = $23^{\circ} 20'$ to the R. at Station
542+72.

Ext. in Tab. IV opposite $23^{\circ} 20' = 120.87$
 $120.87 + 12 = 10.07$. Say a 10° Curve.

Tan. in Tab. IV opp. $23^{\circ} 20' = 1183.1$
 $1183.1 + 10 = 118.31$.

Tab. V. correction for A. $23^{\circ} 20'$ for a 10° Cur. = -0.16
 $118.31 + 0.16 = 118.47 =$ corrected Tangent.

(If corrected Ext. is required find in same way)

Ang. $23^{\circ} 20' = 23.33^{\circ} + 10 = 2.3333 =$ L. C.

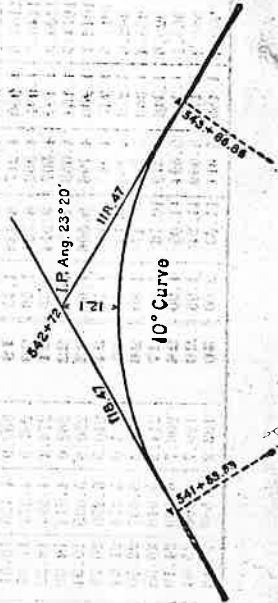
$2^{\circ} 19'$ = def. for sta. 542	I. P. = sta. 542+72
$4^{\circ} 49'$ = " " " +50	Tan. = 1.18.47
$7^{\circ} 19'$ = " " " 543	B. C. = sta. 541+53.53
$9^{\circ} 49'$ = " " " +50	L. C. = 2.33.33
$11^{\circ} 40'$ = " " " 543+	E. C. = sta. 543+86.80

$100 - 53.53 = 46.47 \times 3' =$ (def. for 1 ft. of 10° Cur.) = $139.41' =$
 $2^{\circ} 19' =$ def. for sta. 542.

Def. for 50 ft. = $2^{\circ} 30'$ for a 10° Curve.

Def. for 36.86 ft. = $1^{\circ} 50'$ for a 10° Curve

(These tables are published in Field Books of
KEUFFEL & ESSER CO., New York, N. Y.)



chain = Feet	47560	86884		
25.75	1699.5	1525		
120.	7920.	4317.0		
9.5	613.8	1727.68		
20	1320	831.920		
3.55	234.3	863.84		
80	5280	1317.3560		
16+24	1224	36	36	
15+02	44.055	66	66	
13+43		216	216	
		2376	2376	
		242	242	
		900	217	800
		1800		
		3720		
		1517.00		
		66		
		90		
		990		
		39.5		
		66		
		2070		
		2277.0		
		3518		161.4
		4080.0		1025
		1632.8		
		816.4		
		3770.57		
		4033.4		
		43.34		
		724.57		
		257		
		5071.99		
		36		2283
		14		914
		18		6244.49

