

Field Book #64

DOUGLAS COUNTY

1915

No 19

ate

B. 64.

FIELD BOOK

64

505

40 157  
26  
210 111

158  
146  
12

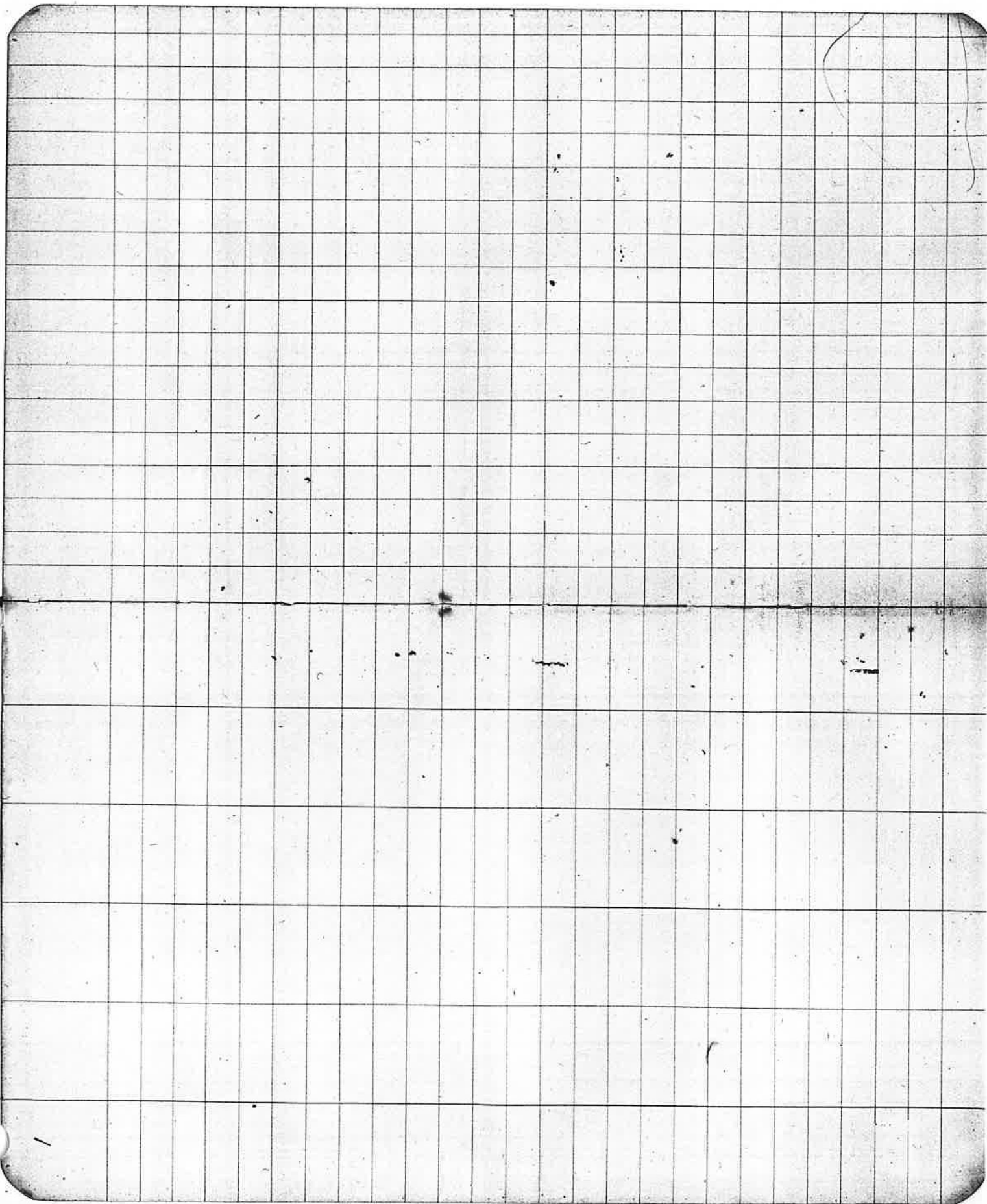
11.92  
10.47  
1.45

67  
26  
43

vert 28° 24' 28° 24' 28°  
28° 24' 222 28° 24'  
334020

Verle Burnett





2. Survey for Ben Matton

Oct 18<sup>th</sup> 1915

To locate the sec line South bdr of  
S.E. 1/4 of sec 32. T21S. R.5W.  
Begin at the corner between Secs 32 & 33.  
find a burned stake in place.  
Oak trees gone, fir stub in sec 33  
no marks visible. Tree in sec 33  
chopped out marks destroyed.  
Remark trees in sec 33.

Fit 30 in N42°E 11 ft.  
" 36 " S 69°45'E 58 "  
" 24 " S 50 1/2° W 83 "  
" 16 " N 68°W. 45 "

set Oak stake 4x4x47 in for cor.  
Thence West Needle direction, Transite line  
Ft. on Random Twp line.

set temp stakes every 300 ft  
13.20A set " 1/4 cor  
19.75 Vert slope

20.55 Top of perpendicular bluffs.  
25.56 intersect 70 ft south of 4 corner  
previously set  
find

Fir 12" N 14 1/4° W 20 ft  
Chinkapin 8" S 8 1/2° E 30 "  
45 "

26.70  
25.66  
00.84

19.75  
80  
20.55

20.55  
12.74  
13.20  
13.20  
26.24

25.50  
13.20  
12.30

12.44  
13.20  
25.64  
60

(Corner recorded)

Vert. angle 36°55' sin 60°6' cos 79°55'  
slope dist. 100'  
19.75 + 80 = 20.056

3.

Continue from last page

Rechain and find 25.56 correct.

N 89°46'E on true line

12.78 set 1/16 cor and Mark

A Fir 42 in S. 20°W 7 ft

" " 30 " N 2 1/2°E 43 "

correct stakes East to sec cor to true line

2 Days @ \$5.00 10.00

Carfare 1.10

Office work 1.00

Total 12.10

10.56 / 10.00 20.00  
 17.68  
 23.32  
 23.00  
 -----  
 26.56  
 .0039  
 7.668  
 23.004  
 2.468  
 24.684

1.0039  
 2.42  
 1.1700  
 2  
 2.34  
 1.17  
 3.01

4. T2S R. 51W Sec. 31, 17.80 Chs.

Survey for W.W. Love and R.L. Allen to establish the line described as follows. Beginning at the 1/4 sec corner on the West side of Sec 31, running thence East 17.80 Chains.

After serving legal notice on both parties we meet at the 1/4 corner indicated. And after swearing M. Moore as chainman, he and myself act as chainman.

I identify corner by original trees. I renew corner by Oak st. post. Thence east transite line. Solar setting for direction.

17.80 Temp stake  
22.81 intersect 34 1/2 s south of point indicated by R.L. Allen & J.T. Miller as subdivision point set by C.F. Roberts. This point being satisfactory to all parties I correct line between 1/4 corner and Roberts corner as line between W. Love & R.L. Allen and establish corner. 17.80 Chs. N. 89° 09' 10" E from 1/4 corner on W. of sec. 31.

Oct 20<sup>th</sup> 1915

Allen

W.W. Love

M. Moore

Oct 20<sup>th</sup> 1915

Lat 43° 36' Dec 4 AM

10° 02' 54"

9 35

2-P.M.

10° 12' 49" + Ref

10° 11' 17"

Lat 43° 36' Oct 21<sup>st</sup> 1915

March 5377"

4-AM 10° 24' 29.2"

9 AM - 10° 28' 57" + Ref

1' 58"

10° 27'

10 28 67

10° 29' 8.11"

1 33

10° 28' 19"

Oct 21st 1915

Mr. J.T. Miller,  
 Mr. R.L. Allen and  
 Mr. W.W. Love agree that this  
 line is the satisfactor dividing line  
 between their properties.

J. J. Miller  
 S of Seal  
 W. W. Love  
 A & Allen

Set a sandstone rock 10x10x12"  
 Marked + for corner. Mark  
 A. Fir 56 m. N. 30° W. 40 m.  
 A. Maple 16 S. 30° W. 87 "

12 days  
 Office work  
 Carfare

19.00  
 10.00  
 1.00  
30.00  
 34.75

Recorded

0.149  
 1.49  
 11.92  
 120.29

22.81  
 34.00  
56.81  
 19.124  
 20660  
 20829  
1310

01490

22.81  
 0.149  
 20529  
 2134  
2281  
 3398.69

20.33  
 1.49  
 25.82

0.149  
 17.8  
 119.2  
 1043  
 149  
 250.22

1.49  
 25.82  
 1.49  
 28.31  
 1.49  
 29.80

0.149  
 1.00  
 0.149  
 1.49  
 2.98  
 1.49  
 4.47  
 1.49  
 5.96  
 1.49  
 7.45  
 1.49  
 8.94  
 1.49  
 10.43  
 1.49  
 11.92  
 1.49  
 13.41  
 1.49  
 14.90  
 1.49  
 16.39  
 1.49  
 17.88  
 1.49  
 19.37  
 1.49  
 20.86  
 1.49  
 22.35  
 1.49  
 23.84  
 1.49  
 25.33

1.49  
 28.31  
 1.49  
 29.80  
 1.49  
 31.29  
 1.49  
 32.78  
 1.49  
 34.27  
 1.49  
 35.76  
 1.49  
 37.25  
 1.49  
 38.74  
 1.49  
 40.23  
 1.49  
 41.72  
 1.49  
 43.21  
 1.49  
 44.70  
 1.49  
 46.19  
 1.49  
 47.68  
 1.49  
 49.17  
 1.49  
 50.66  
 1.49  
 52.15  
 1.49  
 53.64  
 1.49  
 55.13  
 1.49  
 56.62

0.149  
 1.00  
 0.149  
 1.49  
 2.98  
 1.49  
 4.47  
 1.49  
 5.96  
 1.49  
 7.45  
 1.49  
 8.94  
 1.49  
 10.43  
 1.49  
 11.92  
 1.49  
 13.41  
 1.49  
 14.90  
 1.49  
 16.39  
 1.49  
 17.88  
 1.49  
 19.37  
 1.49  
 20.86  
 1.49  
 22.35  
 1.49  
 23.84  
 1.49  
 25.33

1.49  
 28.31  
 1.49  
 29.80  
 1.49  
 31.29  
 1.49  
 32.78  
 1.49  
 34.27  
 1.49  
 35.76  
 1.49  
 37.25  
 1.49  
 38.74  
 1.49  
 40.23  
 1.49  
 41.72  
 1.49  
 43.21  
 1.49  
 44.70  
 1.49  
 46.19  
 1.49  
 47.68  
 1.49  
 49.17  
 1.49  
 50.66  
 1.49  
 52.15  
 1.49  
 53.64  
 1.49  
 55.13  
 1.49  
 56.62

0.149  
 1.00  
 0.149  
 1.49  
 2.98  
 1.49  
 4.47  
 1.49  
 5.96  
 1.49  
 7.45  
 1.49  
 8.94  
 1.49  
 10.43  
 1.49  
 11.92  
 1.49  
 13.41  
 1.49  
 14.90  
 1.49  
 16.39  
 1.49  
 17.88  
 1.49  
 19.37  
 1.49  
 20.86  
 1.49  
 22.35  
 1.49  
 23.84  
 1.49  
 25.33

1.49  
 28.31  
 1.49  
 29.80  
 1.49  
 31.29  
 1.49  
 32.78  
 1.49  
 34.27  
 1.49  
 35.76  
 1.49  
 37.25  
 1.49  
 38.74  
 1.49  
 40.23  
 1.49  
 41.72  
 1.49  
 43.21  
 1.49  
 44.70  
 1.49  
 46.19  
 1.49  
 47.68  
 1.49  
 49.17  
 1.49  
 50.66  
 1.49  
 52.15  
 1.49  
 53.64  
 1.49  
 55.13  
 1.49  
 56.62

0.149  
 1.00  
 0.149  
 1.49  
 2.98  
 1.49  
 4.47  
 1.49  
 5.96  
 1.49  
 7.45  
 1.49  
 8.94  
 1.49  
 10.43  
 1.49  
 11.92  
 1.49  
 13.41  
 1.49  
 14.90  
 1.49  
 16.39  
 1.49  
 17.88  
 1.49  
 19.37  
 1.49  
 20.86  
 1.49  
 22.35  
 1.49  
 23.84  
 1.49  
 25.33

1.49  
 28.31  
 1.49  
 29.80  
 1.49  
 31.29  
 1.49  
 32.78  
 1.49  
 34.27  
 1.49  
 35.76  
 1.49  
 37.25  
 1.49  
 38.74  
 1.49  
 40.23  
 1.49  
 41.72  
 1.49  
 43.21  
 1.49  
 44.70  
 1.49  
 46.19  
 1.49  
 47.68  
 1.49  
 49.17  
 1.49  
 50.66  
 1.49  
 52.15  
 1.49  
 53.64  
 1.49  
 55.13  
 1.49  
 56.62

0.149  
 1.00  
 0.149  
 1.49  
 2.98  
 1.49  
 4.47  
 1.49  
 5.96  
 1.49  
 7.45  
 1.49  
 8.94  
 1.49  
 10.43  
 1.49  
 11.92  
 1.49  
 13.41  
 1.49  
 14.90  
 1.49  
 16.39  
 1.49  
 17.88  
 1.49  
 19.37  
 1.49  
 20.86  
 1.49  
 22.35  
 1.49  
 23.84  
 1.49  
 25.33

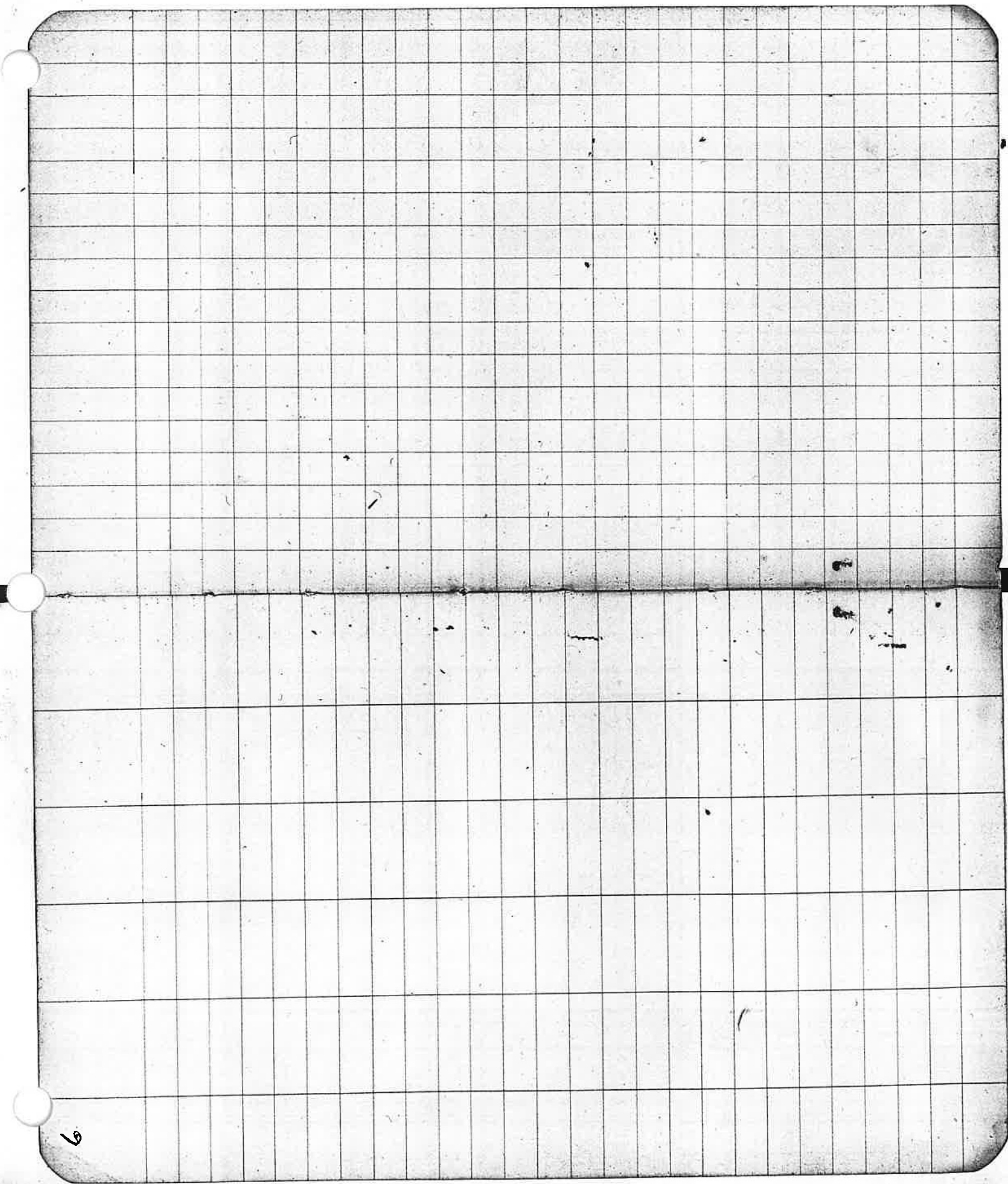
1.49  
 28.31  
 1.49  
 29.80  
 1.49  
 31.29  
 1.49  
 32.78  
 1.49  
 34.27  
 1.49  
 35.76  
 1.49  
 37.25  
 1.49  
 38.74  
 1.49  
 40.23  
 1.49  
 41.72  
 1.49  
 43.21  
 1.49  
 44.70  
 1.49  
 46.19  
 1.49  
 47.68  
 1.49  
 49.17  
 1.49  
 50.66  
 1.49  
 52.15  
 1.49  
 53.64  
 1.49  
 55.13  
 1.49  
 56.62

0.149  
 1.00  
 0.149  
 1.49  
 2.98  
 1.49  
 4.47  
 1.49  
 5.96  
 1.49  
 7.45  
 1.49  
 8.94  
 1.49  
 10.43  
 1.49  
 11.92  
 1.49  
 13.41  
 1.49  
 14.90  
 1.49  
 16.39  
 1.49  
 17.88  
 1.49  
 19.37  
 1.49  
 20.86  
 1.49  
 22.35  
 1.49  
 23.84  
 1.49  
 25.33

1.49  
 28.31  
 1.49  
 29.80  
 1.49  
 31.29  
 1.49  
 32.78  
 1.49  
 34.27  
 1.49  
 35.76  
 1.49  
 37.25  
 1.49  
 38.74  
 1.49  
 40.23  
 1.49  
 41.72  
 1.49  
 43.21  
 1.49  
 44.70  
 1.49  
 46.19  
 1.49  
 47.68  
 1.49  
 49.17  
 1.49  
 50.66  
 1.49  
 52.15  
 1.49  
 53.64  
 1.49  
 55.13  
 1.49  
 56.62

0.149  
 1.00  
 0.149  
 1.49  
 2.98  
 1.49  
 4.47  
 1.49  
 5.96  
 1.49  
 7.45  
 1.49  
 8.94  
 1.49  
 10.43  
 1.49  
 11.92  
 1.49  
 13.41  
 1.49  
 14.90  
 1.49  
 16.39  
 1.49  
 17.88  
 1.49  
 19.37  
 1.49  
 20.86  
 1.49  
 22.35  
 1.49  
 23.84  
 1.49  
 25.33

1.49  
 28.31  
 1.49  
 29.80  
 1.49  
 31.29  
 1.49  
 32.78  
 1.49  
 34.27  
 1.49  
 35.76  
 1.49  
 37.25  
 1.49  
 38.74  
 1.49  
 40.23  
 1.49  
 41.72  
 1.49  
 43.21  
 1.49  
 44.70  
 1.49  
 46.19  
 1.49  
 47.68  
 1.49  
 49.17  
 1.49  
 50.66  
 1.49  
 52.15  
 1.49  
 53.64  
 1.49  
 55.13  
 1.49  
 56.62



6

7.315 R 6 W Sec 5  
Survey for J. Sessions.

Brono & Brono Atty's.

Began Nov 10<sup>th</sup> 1915

Spent the day trying to locate a corner for starting point.

Nov, 11<sup>th</sup>

Regain at corner previously set

for corner to secs 4, 5, 3 & 33.

Assume dec. 20° 45'

Transite line west.

1.00 Offset 3 1/2 lks North

set stakes every 5' clis.

2.00 Offset 4 1/2 lks North

8

3

5

7 1/2

8 1/2

3.00 Mouth of big tunnel 5.16° 40' E. 4.15 clis.

33.05.5

35.89.6

40.00 temp stake

50.68 Offset 3 lks South

53.85 " 1 1/2 " South

80.00 No signs of corner the ground

showed an opening in timber

but the soil is of shell rock and

very steep a rock pile would not

stay long.

Leon McAdinitoch  
Chainman.

Ross & Sessions  
Examers.

20 5.3

Revised  
Book 1 Page 219

continue this line Nov 17

Vert slope 22° 41' slope dec 14.7 - 20.55

" " 17° 44' - 26.6' = 3.55x

Corrections South

60 - 49

65 - 45

50 - 43

45 - 42

40 - 38

35 - 35

30 - 32

25 - 31

20 - 27

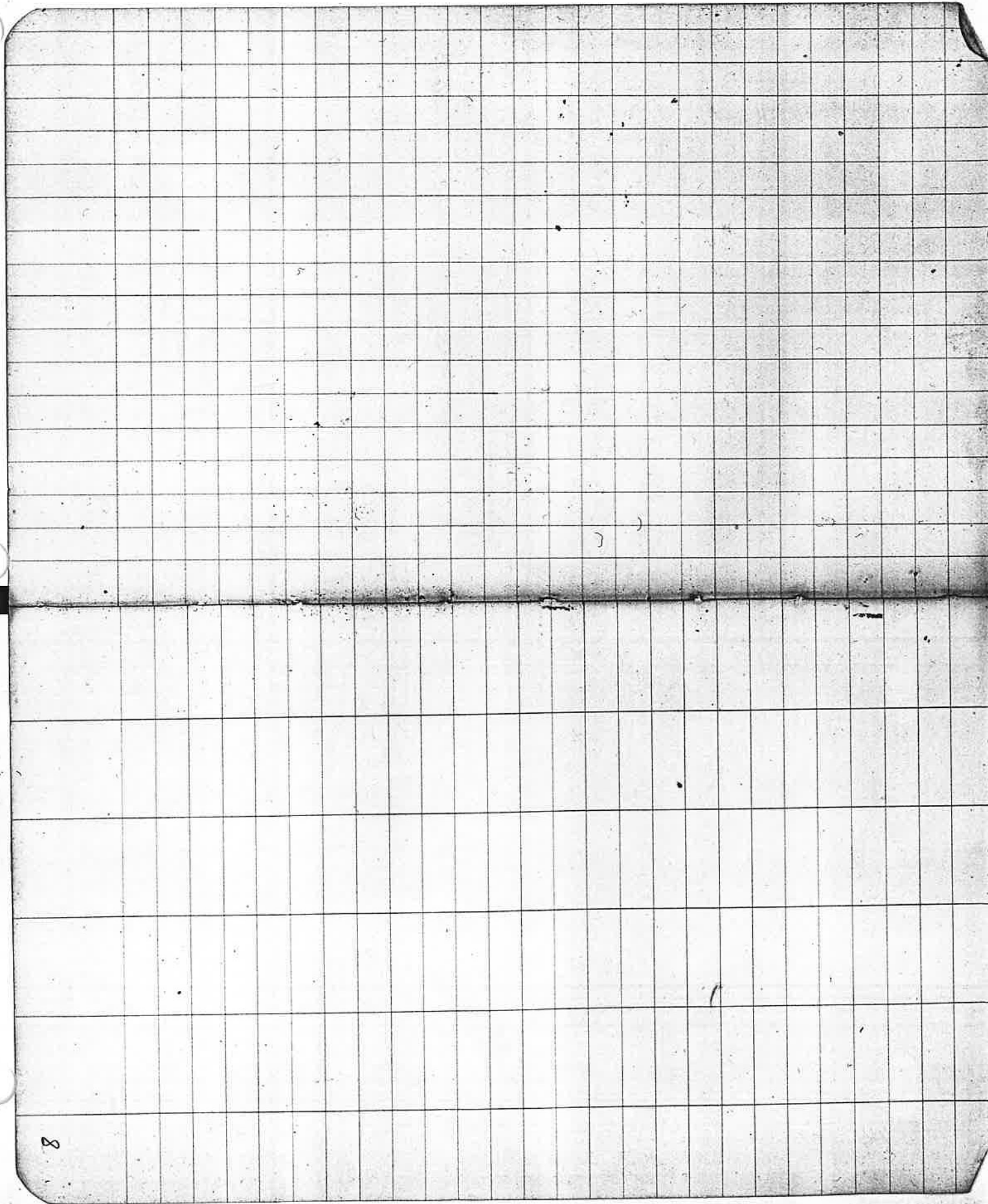
15 - 19

10 - 14

05 - 07

North hub

Field notes



9,

Continue Leventledge Mine

Nov 12<sup>th</sup> Morning

Having received field notes. /  
Began at corner to secs 4, 5, 22 & 33  
as witnessed by Co Surveyor via  
4 Laurels. N15.

Laurel 24" N 74° W 28 MS -  
set in 24" N 75° E 6 " 15.  
" 24" S 69° E 34 "  
" 13 S 52° W 38 "

9.51<sup>0</sup> 47' W Random transite line

9.00 Offset 3 MS East.

32.49 " " East.

41.36 Intersect 1/4 line 24 West of post

Returning  
N 102 1/2° E true line.

Corrections

5.00 3.8 7/16

10.00 7.2

15.00 10.8

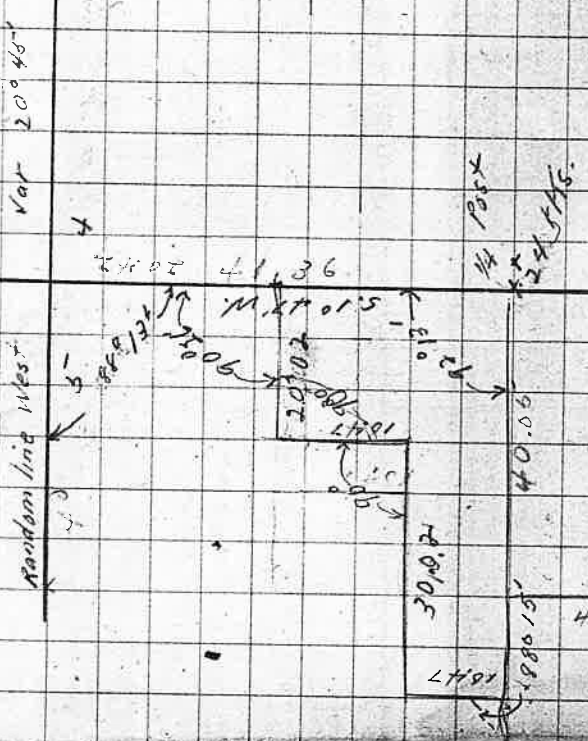
2.00 14.4

20.42 corner 15 1/2 MS.

set 1/16 corner bot sec 5 49.5  
corner to 32, 33, 48 5 on true line from  
Frame which

1.47  
2.26  
20.13  
90 26  
1 45  
92.0 47

3 2  
3 3  
Var 20° 46'



Nov 13

12 1/2 in N 78 1/2° E 9.8 MS  
" 12 " S 53 1/2° E 9  
" 12 " S 87 1/2° W 10

front 1/4 post between secs

445 ran West

West random 1/4 line on offset

10-1/2 North.

10.50 Offset 3 1/2 hrs North

35.63 " 1 1/2 " South on correct

Random line

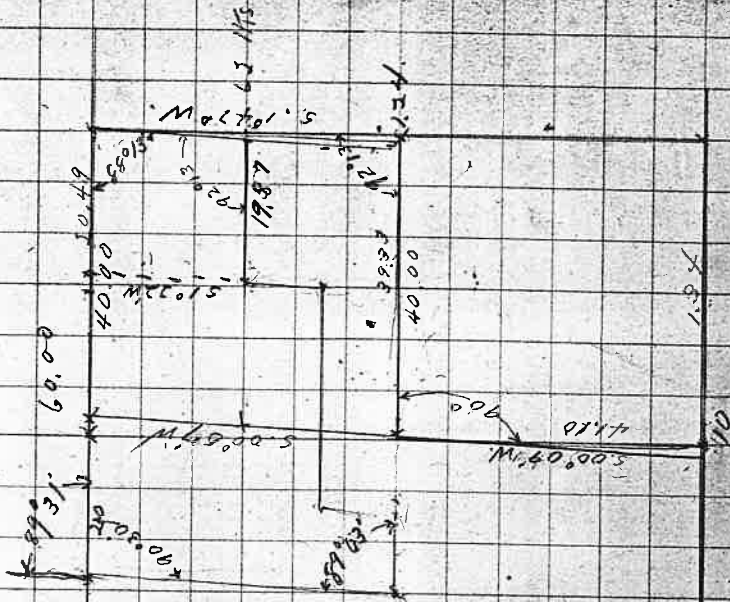
57.19 Offset 3 feet South.

78.00 " 3 " North on random line

90 00  
58  
8902

14th

Nov 14th,



Nov 19,

Continue for Sessions

From stake set 14.00 chs West of:

1/4 sec cor on East of Sec 5

1 turn 90° and run

South on random

11:10 Intersect sec line 10 1/2

East of corner Fir still

standing no marks visible

find stump of laurel, body  
burned off.

From 1/4 corner on South boundary  
of Sec 5. Ran compass line West  
and search for sec corner.

The character of land and timber  
correspond with notes made from  
original survey but I can find no trace  
of witness trees.

22 Nov 22 High wind AM.

520.13' W.

N 89° 13' W 00'

M. L. 19015

N 88° 33' W. 1

M. L. 19015

12

Nov 23, Continue for Sessions

Begin at 1/4 corner on East side of the N.E. 1/4 of Sec 5. 1 ran West

19.85  
5.02 set a post for interior corner of the Levens ledge property marked 1/6 S from which

A Fir 26 in S 2 1/2 N 85° 91 N/S

" " 42 " N 4 1/2 W 95 " "

Thence South

10.47 set Post for S.E. angle

Corner from which

A Fir 42 in S 17° E 312 N/S

" " 40 " N 0 1/2° E 69 " "

Trees marked 1/6 S & B.T.

Thence West on offset 5 N/S South

30.03 set Post from which

A Fir 20 in brs S 40° E 30 N/S

" " 40 " " N 67 1/2° E 45 " "

Thence South

10.47 post from which

A Fir 18 N 38° W 41 N/S

" " 16 S 27° E 112 " "

Note There was an error in this angle. Corrections as follows.

Nov 29

5. chs - 15.57

10 " " - 31.1

15 " " 46.67

19.85 " S 2.2 South 15 N/S East

Angle 5 19 32 W

5.00 = 4.38 = 13.6 - 10.47 N/S East

10.47 = 9.85 = 34.5 - 23.7

Extend 62 N/S South, move 28 East

Angle West

5.00 = 5.28 - 15.74 + 62.2 = 71.9

10.00 = 10.28 - 31.3 x 62.2 = 93.5

15.00 = 15.28 - 48.8 + 62.2 = 110.

20.00 = 20.28 - 62.4 + 62.2 = 124.6

30.00 = 30.28 - 79.9 + 62.2 = 144.2

29.60 = corner move 15.8 South, 23 East

Angle South

5.00 = 3.43 - 10.6 + 51 East

10.00 = 8.43 - 21.2 + 57 East

15.00 = 10.47 - 31.2 + 67 East

13.

1/16 corner on south boundary of  
X S.W. 1/4 of sec 5 from which

A. F. C. 50 in brs S. 12° W. 25 MS

" " 14 " S. 72° W. 41 "

N. 00° 31' E.

41.94 intersect random line on North  
boundary at 59.96 from N.E.

Cor of sec 5

set corner 49 MS south of  
random line on North X  
and Mark

A. F. C. 24 in S. 24° E. 42 MS

" " 24 " N. 89° 30' W. 90 "

14

Tie line to the tunnels and shaft on Levens ledge. Beginning at sta 16.00 on south boundary, on jog line ran needle line

398

398

N 70° 45' E

300

N 41° E

185

N 24° E

185

N 24° E

0+00 = Sta 16.00 on 20.00 Chain line.

Thompson's shaft on south





Expenses Acct for Hancock

Field notes	5.00
Dec 15 Carfare	1.10
" " Hotel	1.25
" 15 Stage	1.25
Dec 16 Work	
17 "	
18 "	
19 "	
" 20 "	
21 "	
22 "	
23 "	35.00
24 Stage	1.25
" Subber	.50
" Carfare	1.10
Office recording	5.00
	<del>5</del> 48.45
	1.50

17.

SURVEY FOR JOHN HANCOCK.

(Recorded  
 the 1 day &  
 3 days  
 DTS.

Begin at E. Sec. Cor bet. Secs. 13-14  
 T 22 S R 7 W. 11 M.  
 Find remains of 30" Cedar Tree with  
 blaze faintly visible and John Hancock  
 Testifies that he saw the tree marked  
 by Byers. no evidence of Maple.  
 Set 4' x 4' x 1/2" Cedar post 2' in ground  
 mtd. C.S. 1/4 S. 5 S. 513. 514 from  
 which a Fir <sup>mtd. 1/2 S. 87</sup> 12' in dia. brs N 50° 15' E.  
 1.42 Ch A. Fir 72" " " S 58° 30' E  
 1.54 Ch. " " " " " " " "

feet		Var	21° 45' E
5.89° 50 W		Hor Dist	9987
2.66 A	Yer 1 2 56'	Cosine	9987
66	+ 36° 33'	53.02	8033
1.03	+ 27° 57'	91.00	8834
2.66	+ 26° 40'	237.70	8936
2.66	+ 34° 16'	219.82	8264
2.66	+ 29° 30'	231.53	8704
1.23	+ 42° 02'	71.36	7428
.35 (K5)	0° 00'	1190.08	
.65 "		= 66.00	
97 #K5		1256.08	132000
		68.92	

Rain and Wind

Dec. 16 - 22  
1915

J.M. Cole deputy C.S.

John Hancock

Thos "

Oscar "

Jim Hancock

Sec. 14

1/4 line

Sec line

30" Cedar stump

1/2" Cedar Post

Sec 13

9987 6	8033	5	8834	8936	8
266 5	66	5	103	266	5
5992 2 3	48198	6	26502	53616	4
5992 2	48198		8834	53616	
19974	530178		90.9902	17872	
2656.5 2 3				23769764	

8264 2	8704	1	7428 3
266 5	266	5	123 6
49584	52724	5	22284 0
47584	52724		14856
16528	17408		7428
2198224	2315264		9136444

Set term stake 1/6 Cor



19.

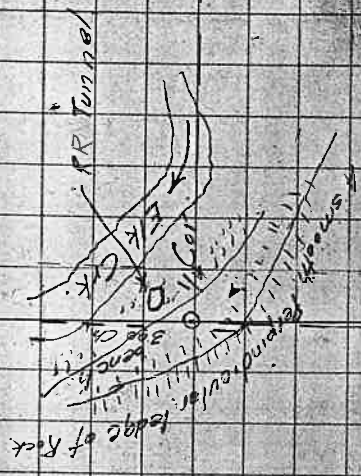
Course	Slope Dis.	Vert L.	Cosine	Hor Dist	Total
Feet.	-166'	-7° 50'	9907	164.5	
	212.	-4° 25'	997	211.4	
	166	-5° 24'	996	165.3	1321.3
	discontinous line Dec 18 4:00 PM '13				
5280 =	Search for Cor Dec 22 1915				
80,000 Chs.	Continue line Dec 22 1915				
	1.16	+22°	927	1.08	
	1.00	+15° 10'	965	97	
	.80	+18° 45'	947	76	
	1.00	+33° 46'	801	80	
	.95	+46° 00'	697	66	427
{ 8427 Ch.	Intersect. S of 1/4 Cor 307 Chs.				
{ 5551.64	-1.00	-30°	866	87	
	-1.00	-33°	839	84	
	1.00	-31°	857	86	
	.38	0° 00'		38	
				4.12	307
	True line N88° 05' W				

1907 7 997  
 166 4 212  
 59442  
 59442  
 9907 997  
 16445621  
 211364

Search for Cor Dec 22 1915

927 947  
 116 80  
 5562 73760  
 927  
 107532 697  
 95 3485  
 6273 6273

Find remains of old BT Stumps  
 set and Iron Pipe 2"x4' for Cor  
 dist to BT in Sec 15. measures 541ks  
 Top of RR Tunnel is N 149 E about 754





Cont. for Hancock.

Sec. 11.

1/4 S. Cor.

89° 40'  
85 18'  
4442

Dist in Chains

36.61  
300000  
24668  
53370  
49326  
50440  
49324  
11140  
34.97  
488  
704  
224  
36.14  
107  
717

24.71

E.K. Creek



36.41

N 24° 45' W

181.58

90°

300

170

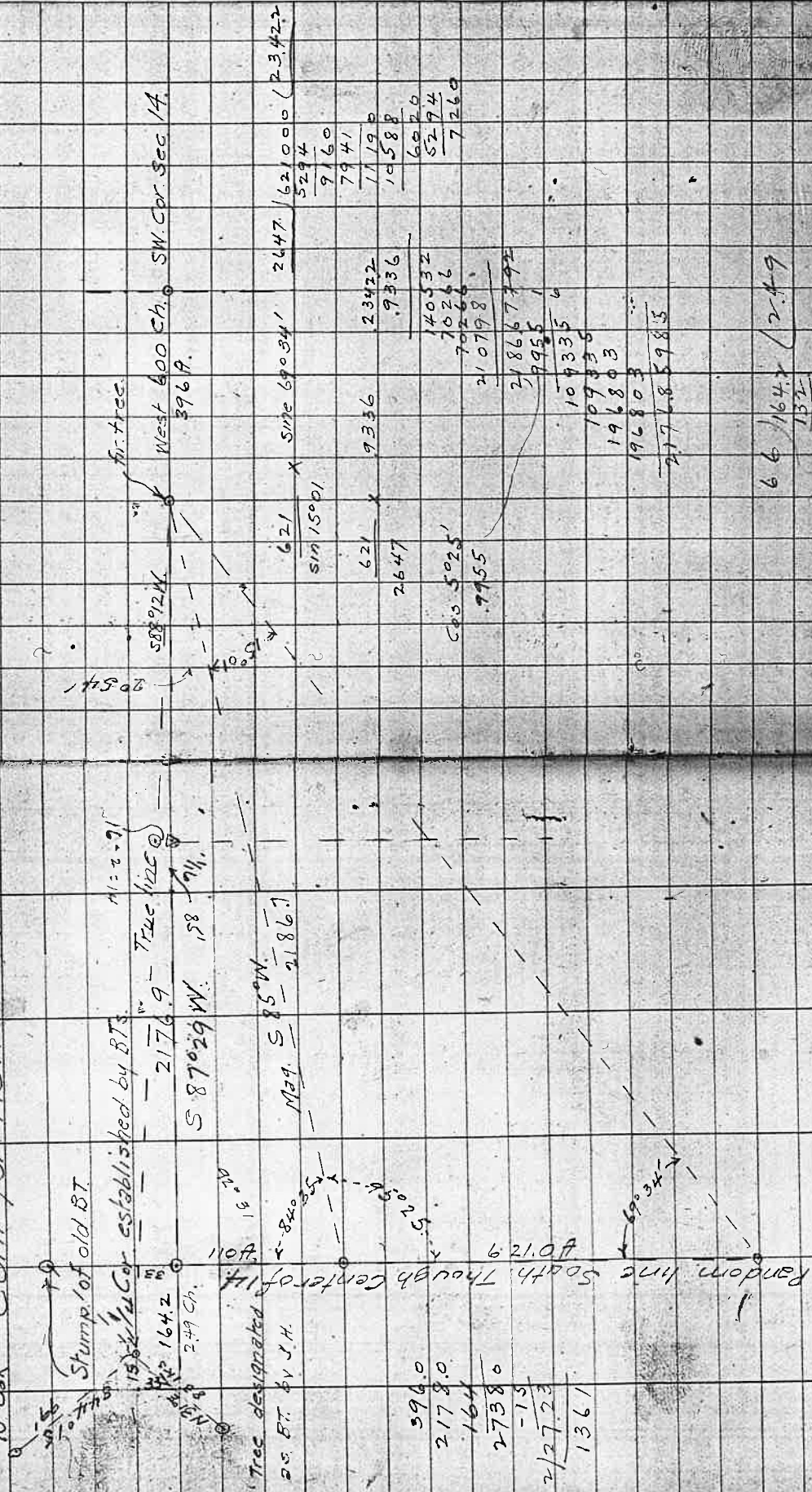
Flag on Ridge near center of Sec 14.

Triangulation to check previous Triang. see page 20.

Cont for Hancock.

South	S. dist	Vert L	Cosine	H dis.	Req	Through Center of Sec 14
45.12 Ch	2077	-7°45'	.9909	27060 66.0		8°15' x 121'
29.78 A						Cross E and W Random line 1198 A W of <sup>Temp.</sup> 1/4 Post
	166.0	+2°20'	.9992	66.6 165.9		
	266.0	-2°45'	.9989	265.7		
	165.0	-1°35'	.9996	164.9		
	266.0	+10°10'	.9843	1261.8		66 / 2978 ← 512
	55.0	+18°45'	.9469	52.1		264
	266.0	-3°01'	.9986	265.6		338
	266.0	+21°08'	.9327	248.1		330
	63.5	+25°25'	.9032	57.4		80
	266.0	+9°40'	.9858	262.2		66
	13.0	0°00'		13.0		140
	266.0	-7°00'	.9926	264.0		To line hub on Ridge
	266.0	-5°45'	.995	264.7		
	93.0	-6°25'	.9937	92.4		
	81.0	-13°05'	.974	78.9		
				31.0		Intersect S line Sec 14 of 1/4
				7.0		
83.42				33.0		
5506						
						Intersect S line of 1/4 1492 W of 1/4 Post
						Find Fir BT in Sec 14 alive and standing
						S 31°W 83 lks search for Remains of Post, no evidence of snag. Set 4x4x3 1/2 Fir Post for Cor. marked 1/4 S oak mkd 1/4 S 137

10" oak Cont for Hancock



596.0  
 2178.0  
 164  
 2738.0  
 -15  
 2/27.23  
 1361

621000 (23422  
 5294  
 9160  
 7941  
 11190  
 10588  
 6070  
 5274  
 7260

2647  
 621 X 9336  
 23422  
 9336  
 140532  
 70266  
 210798  
 218667  
 9955  
 109335  
 109835  
 196803  
 217685  
 983

66 1642 / 249  
 132  
 322  
 262  
 580

2176.9 - True (125°)  
 S 87° 02' W. 158  
 N 09.5  
 S 85° W. 2186.7

11-2-21  
 True (125°)

58892 W.  
 2054'

West 600 Ch. SW. Cor. Sec. 14.  
 396.9.

Stump of old BT  
 15 1/2 1/4 Cor established by BTs  
 164.2  
 249 Ch.

Tree designated by J.H.  
 840  
 520  
 690

Random line South. Though Center of 14

Continue for Hancock



Note  
 { Bearings of lines shown were taken with Ver 2145 E  
 28°20' Should be used.  
 To correspond to Original Survey.

Change bearing to Witness trees at corners on 1930 for right on acct. bearing take with Ver of 3°20'E. 21.79 Ch = 14.38 ft.

26.40 } 77.000  
 528.0  
 242.00  
 237.60

Note this triangle shows to a point 33 ft North of true Cor. as it was made before received field notes and established the true corner.

designated as SW. Cor of S1A by J. Hancock

Cont for Hancock

Dec. 21. 1915

25.

Course

587°39W

Sdist

100.0  
266.0  
61.5  
266.0  
236.0  
185.0

Vert L

-5°35'  
-5°00'  
0°00'  
-10°35'  
-7°30'  
-7°45'

Cos

Var. 21°45'E  
9953  
9962  
983  
991  
991

Hdis

1642  
995  
2650  
615  
2615  
2339  
1830

Total

983  
266  
5898  
1966  
261478  
991  
184  
3764  
7928  
991  
233876  
182344

From 1/4 Cor S side 14  
Intersect N 85 Random.

line hub offset 2' N.

Set approximate 1/16 Cor

From 1/4 Sec post S side 14 Var 23°20'E

East

142.0

-10°35'

983

1396

100.0

0°00'

100.0

1423  
1956  
3932  
983  
137586

266.0

+8°45'

988

2628

140.0

+12°15'

977

1368

266.0

+9°10'

987

2625

200.0

+9°00'

988

1976

266.0

+9°05'

987

2625  
-22  
1340

1340 approx - 1/16 Cor

From which

Acadec 48" N 57°W 55A

988

200

19600

262542

983 2  
1423  
1956  
3932  
983  
137586

988  
266  
5928  
1976  
262808

977  
140  
34080  
977  
136780

987  
266  
5922  
1974  
262542

988  
200  
19600

262542

## Survey for J.C. Gibson

T 23.5 R. 5W. P.O. Oakland  
 Survey made to determine the  
 SW & NE Cors of Gibsons land  
 which is part of W. Wilson D.L.C. #45

Begin at NW Cor. of Cl 45. find stump  
 of Orig. B.T. with marks visible at 1° W 29 1/2  
 also remains of oak stump S 88° W 29 1/2

Set Concrete blk. 5x8x12" hole in top

1A in ground " also oak stake 3' x 3 1/2"  
 From which A fir 18" brs. S 20° W 4 1/2"  
 " " 18" " S 48 1/2° E 59

South On Random Var 21° 30' E.

13.00 Line Tree 5 1/2 ks West

20.00 Set Temp stake

22.00 Offset 3 1/2 F.

25.00 " 2.32 ch E  $\xrightarrow{SW}$

79.50 Intersect. 1.18 ch. E of Cor.

True line S 0° 51' E

Return to stake at 2000 ch correct.

East 30 ks Set SW Cor of J.C. Gib.

PROP an oak stake 3x3x3 1/2 18"

in ground from which

Mkd C.S. B.T. { A Fir 10" brs. S 26° W 1/2"  
 Oak 10 " N 50° 45' E 90

Feb 9 1916

W. W. Wilson

F. O. Joedel

J. C. Gibson

Joe Gibson

Joe Wilson

John Wise

J. W. Cole Inst.

Wit-

J. W. Cole

W. W. Wilson

Note

No evidence of Rock

called for in field notes.

field notes S 82° W 29 ks All 3 calls of 4.

mkd Cl 45 C.S.

Wit Trees mkd by Thiel

Cloudy no sur.

Dist not chd. after setting 2000 ch pt.

235

118

79.5 117 ch (0.147)

T. 0.147 = 0° 51'

Old fence Cor. E 15 ks South 10 ks

Course fence Easterly

J. G. Gibson  
We hereby accept the  
stake set and witnessed  
as the SW Corner of  
the J. C. Gibson Property  
as the true property corner

J. G. Gibson  
J. D. Wilson  
Attest  
J. D. Wilson

Signatures witnessed by  
J. D. Wilson

by J. W. Cole

Expense Acct. Gibson Survey

Feb. 8.	1/2 day	2.50
" 9	1 "	5.00
Carfare		1.90
		<u>\$ 7.40</u>

By Cash \$9.40

28 Filed Notes for Dawson Survey

	Set post cor to Decs 29-30-31-32	30
	from which	
	Q W Oak 15" N 68° E 237 1/2	
	Q Y " 12" N 43 1/2° W 218 "	
	" " 11 S 74 30 E 168	
	W " 13" S 8 1/4° W 346 "	
	Var. 15.5 E.	
	N 89° 40' W on true line bet Dec 29-32	
5.00	Leave valley begin to ascend.	
17.50	Top of Spent M & S.	
23.00	Ravine A.E.	
39.86	Set an post from which	
	Q Laurel 16" S 50° W 12 lbs	
	Q Oak 12" N 20° E 32 1/2 "	
55.00	Top of hills N 20° E	
79.72	See Cor.	
	North bet 31-32. Var 19° 35 E	
2.50	Foot of hill - enter oak opening	
23.00	Top of Ridge N.W.	
27.50	Ravine N 70° W.	
32.00	Top of ascent	
35.50	Ravine West.	
40.00	Set an post from which	
	Q Fir 12. N 12° W 24 lbs.	
	Q Oak 8. N 41° E 90 "	

T 27-5W  
29.



32

31

29.

Lat 43° 11'

2° 58' 142

4 530

+ 3° 03' 072

+ 3° 04' 058

+ 3° 05' 044

+ 3° 06' 020

2° 58' 142

8 47

3° 07' 01

3° 07' 586

3° 08' 582

A 9.43

5.12

9.48.12

1.13

10.01.12

9.47

5.12

9.52

1.13

10.05

60/292 70 (4.53)

240

52

1' 06" = 3° 04' 13"

0' 53" = 3° 04' 58"

0' 47" = 3° 05' 51"

0' 00" = 3° 06' 02"

586

60/5274

8.47

5° 07' 51"

3° 08' 53"

3° 10' 08"

58 58

5

60/292 70 (4.53)

240

52

1' 06" = 3° 04' 13"

0' 53" = 3° 04' 58"

0' 47" = 3° 05' 51"

0' 00" = 3° 06' 02"

586

60/5274

8.47

5° 07' 51"

3° 08' 53"

3° 10' 08"

Brq.

N

N 23 1/2° W

N 1° E

N 37 1/2° W

N 64 1/2° W

Dist

6.50

7.50

8.00

4.00

25.00

N

6.50

6.88

8.00

3.17

10.76

35.31

1°

99985

199880

8

8.77340

37 1/2°

79835

4

8.77340

Brq.

N

N 23 1/2° W

N 1° E

N 37 1/2° W

N 64 1/2° W

Dist

6.50

7.50

8.00

4.00

25.00

N

6.50

6.88

8.00

3.17

10.76

35.31

1°

99985

199880

8

8.77340

37 1/2°

79835

4

8.77340

Brq.

N

N 23 1/2° W

N 1° E

N 37 1/2° W

N 64 1/2° W

Dist

6.50

7.50

8.00

4.00

25.00

N

6.50

6.88

8.00

3.17

10.76

35.31

1°

99985

199880

8

8.77340

37 1/2°

79835

4

8.77340

Brq.

N

N 23 1/2° W

N 1° E

N 37 1/2° W

N 64 1/2° W

Dist

6.50

7.50

8.00

4.00

25.00

N

6.50

6.88

8.00

3.17

10.76

35.31

1°

99985

199880

8

8.77340

37 1/2°

79835

4

8.77340

Brq.

N

N 23 1/2° W

N 1° E

N 37 1/2° W

N 64 1/2° W

Dist

6.50

7.50

8.00

4.00

25.00

N

6.50

6.88

8.00

3.17

10.76

35.31

1°

99985

199880

8

8.77340

37 1/2°

79835

4

8.77340

Brq.

N

N 23 1/2° W

N 1° E

N 37 1/2° W

N 64 1/2° W

Dist

6.50

7.50

8.00

4.00

25.00

N

6.50

6.88

8.00

3.17

10.76

35.31

1°

99985

199880

8

8.77340

37 1/2°

79835

4

8.77340

Brq.

N

N 23 1/2° W

N 1° E

N 37 1/2° W

N 64 1/2° W

Dist

6.50

7.50

8.00

4.00

25.00

N

6.50

6.88

8.00

3.17

10.76

35.31

1°

99985

199880

8

8.77340

37 1/2°

79835

4

8.77340

Brq.

N

N 23 1/2° W

N 1° E

N 37 1/2° W

N 64 1/2° W

Dist

6.50

7.50

8.00

4.00

25.00

N

6.50

6.88

8.00

3.17

10.76

35.31

1°

99985

199880

8

8.77340

37 1/2°

79835

4

8.77340

Brq.

N

N 23 1/2° W

N 1° E

N 37 1/2° W

N 64 1/2° W

Dist

6.50

7.50

8.00

4.00

25.00

N

6.50

6.88

8.00

3.17

10.76

35.31

1°

99985

199880

8

8.77340

37 1/2°

79835

4

8.77340

Brq.

N

N 23 1/2° W

N 1° E

N 37 1/2° W

N 64 1/2° W

Dist

6.50

7.50

8.00

4.00

25.00

N

6.50

Lawson Contd.

	Begin at SW Cor. of NE 4 NE 4 of Sec 32 T. 27 - SW. as set by C.E. Roberts project. Roberts East and Solar gives S 86° 15' 25" E with gives S 87° 30' E with Var 20° 45' E			
Sta.	Slope dis	Vert L. Cosine	Hor dis	total
0+00	1000	0° 00'	1000	1000
1+00	2000	-0° 29'	9996	3000
3+00	870	+10° 45'	9825	3855
3+855	1950	+5° 30'	9954	5796
5+796	1950	+5° 30'	9954	7757
7+737	1900	+10° 33'	9831	9605
9+605	1950	+16° 40'	958	1446.6
11+466	950	+20° 12'	9385	12358
12+358	1221	+16° 50'	957	13526
13+526	1700	+19° 45'	9412	13958
13+958	1950	+30° 00'	866	15315
15+215	1950	+25° 55'	9032	16976
15+642			+82	17408
			640	17447
				17616

17+616

J. W. Cole  
 M. T. Dawson,  
 Ben " "  
 F. Buckston.

Mar 28  
 1916

Notes: { Δ = Point set over to take vert L.

On 2' offset North.

62.8 line hub

Top of small ridge

132.6 = line hub

130 + 15° 15' To line hub

122' + 16 50' " (White hub) ?

+ 60' to line hub approx

line hub

Intersect. 33' S of SE Cor Cobb Est.

33 + 2' offset = 35 ft.

1812 / 35.000 (0.93 = Top 1' 06)

58.58

60/351.48(5)  
800

2° 58 14.2

5° 31

3° 03 45.2

53"

3° 04 38 = 10 AM

3° 03 45

59

3° 04 54

47

3° 05 41. 11 AM

37.

Survey for Robt Green  
to determine descr. of 16' RofW.

60) 58.40  
7.44

Sun's dec.

3° 21' 38.5"

9 44

10:00 AM. 3° 31' 22.5" Ref 2 hr 58" = 3° 32' 15.5"

58.4

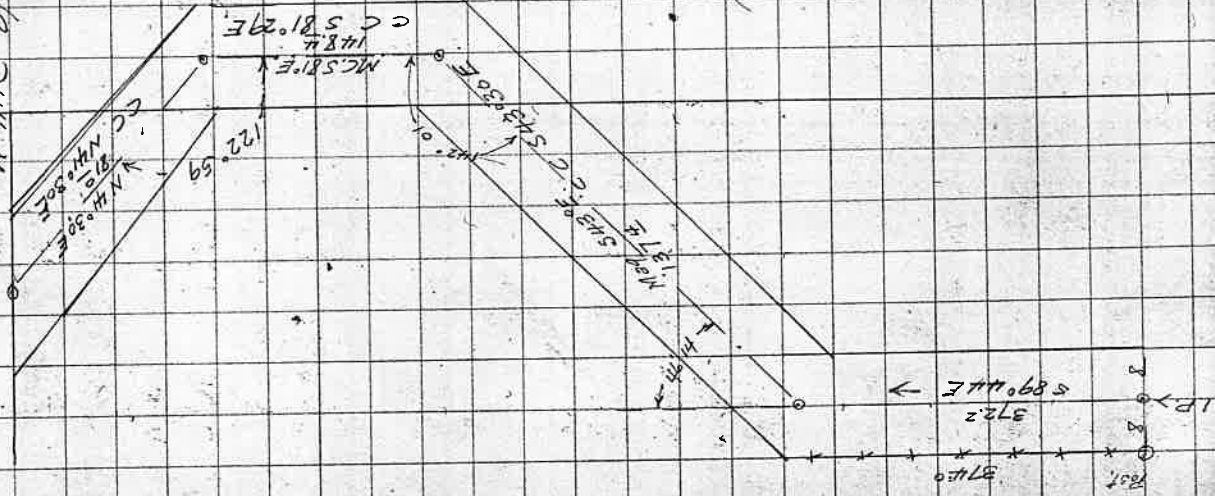
11:00 " 3° 32' 20.9 " 1.47" = 3° 33' 08"

Beginning taken from deed of  
Ethel Mulkey from Robt U. Green  
as follows.  
Beginning at a point 16.547 South  
of the NW corner of the Watten  
B Foster B.L.C. 76.48 W.M.  
thence South 116.74 Thence  
77.89° 44' W 374° (Beginning point of  
Road description) South of this point

J 288 R 6 W

March 29/16  
J. W. Cole  
Robt Green

W. line of R Greens Prop.



W.B. Kelson

Apr 15 1916

Description for petition for  
 Beginning at the S.W. Cor  
 of the S.W. 26 SR

Thence E. 274.00 chains  
 to

the for end begin at S.W. Cor

S 52° 45' E 274.00 chs

N 71° 34' E 817.01

to point in E of

N

278

1.10

1.68

S

1.19

1.70

E

2.13

8.34

10.47

End 168 chs N.W. 26 SR and 1017 chs  
 East from S.E. Cor of Ashford

D. S. B. No

T.P. 265 R 4 N

Lat 43° 19' N

Tan 21° 32' E

County Road

of the S.W. Cor of the Ashford  
 T.P.

34

W.R. Wilson

Apr 15 1916

Survey for description for

W.R. Wilson and W.H. Young

Beginning at a point common to  
and T.B. Young

N 55° R 9.19 chs

N 78° 32' W N 78° 33' W

N 80° 07' W

5570.48 W

N 88° 06' E

137

278

19.94

20.96

Release

chain used

is as follows but see 10 N 11 from which

300' or 241' S 45° E 46-2-120

30" N 45 1/2° W 112 "

0.27

48

75

11.34

274

408

To place of beginning

at Chain 12, 432.0000

of see Same R 69 0120

March 20 1916



Chinese

S. dist.

Ver. TA

Cos.

H. dist.

Time for Lerenledge work

	10	11	12	13	14	15	16	17	18	19	20	21	22	23	24	25	26	27	28	29	30	1	2	3
F.J. Cole	1	1	1	1	1	1	0	1	1	1	0	0	0	1	0	0	0	0	0	1	1	1	1	1
Leon Mchintock	1	1	1	1	1	1	0	1	1	1	0	0	1	1	0	0	0	0	0	1	1	1	1	1
W. Ross	1	1	1	1	1	0	1	1	1	1	0	0	1	1	0	0	0	0	0	1	1	1	1	1
F. Sullivan	1	1	1	1	1	0	1	1	1	1	0	0	1	1	0	0	0	0	0	1	1	1	1	1

Leon wages \$2.00  
 Ross 2.00  
 Sullivan 2.00

Leon got \$2.00  
 and expenses.

See

day

sunday

sunday

sunday

Jan

11 3

15  
 16  
 17

18  
 19  
 20  
 21  
 22  
 23  
 24  
 25  
 26  
 27  
 28  
 29  
 30  
 31

Expense of Leven Ledge Work

F. Cole

Carfare Roseburg to Riddle

Board at Riddle

" "

Canyonville

Less send both of these bills as they are here

Leon McChintock

Carfare

Board at Riddle

" "

Canyonville

859

1,36-

36-

13,00

16,56-

859

1,36-

36-

13,00

16,56-

Cedar \$4 "S 840 W 54 "  
Cedar and Fir  
2 Cedar 20 28  
C C Cedar C

31,10 \$ 331,10

333  
33,10

31,1042

302 59

180 00

122 59

179 60

46 14

133 46

2640 770000 6292

5280

24200

23769

4300

179 60

91 27

88 33

1 40

1 613

920 31

1 04

910 27

100 -25° 45'

100 300

177

152

54

1040



179 60

92 31

87 29

1 04

88 33

1 40

90 73

4) 307  
 77  
 170  
 578  
 2154  
 2056

E.A. Sessions  
 1006 Kelly St  
 2179  
 66

Portland  
 13074 of Leven Ledge. 149.75  
 13074  
 143814

Corn Cake, 76  
 66  
 37  
 142 103

E.H. Fate  
 Days Creek  
 66 775  
 82 11  
 46  
 168  
 66108 (14 for Goats long wool)

Camphorale  
 Woodward & Clark  
 Portland  
 2640  
 68  
 2572  
 74  
 66  
 140

80) 295(3  
 24  
 57  
 66  
 123  
 98  
 519  
 66  
 617  
 594  
 1216  
 1320  
 1256.08  
 66) 6392(97  
 594  
 452  
 462

40.00  
 68  
 3932  
 27  
 2572  
 427  
 2179  
 68

28028  
 66) 85(13  
 66  
 190  
 198

2000  
 181  
 21.81  
 21.81  
 68  
 21.13  
 80

2179  
 19.32  
 2.47  
 20.00  
 68  
 19.32  
 2179  
 2113  
 66

166  
 46  
 212  
 54  
 266  
 1216  
 2  
 66) 1196(181  
 66  
 536  
 528  
 80

427  
 68  
 2569  
 179  
 181  
 427  
 68  
 2569  
 179  
 8427  
 4068  
 4359

2179  
 179