

Field Book # 57

DODGE COUNTY

1911

Date  
**F.B. 57**

NO 2

TRANSIT BOOK

1809

57

①

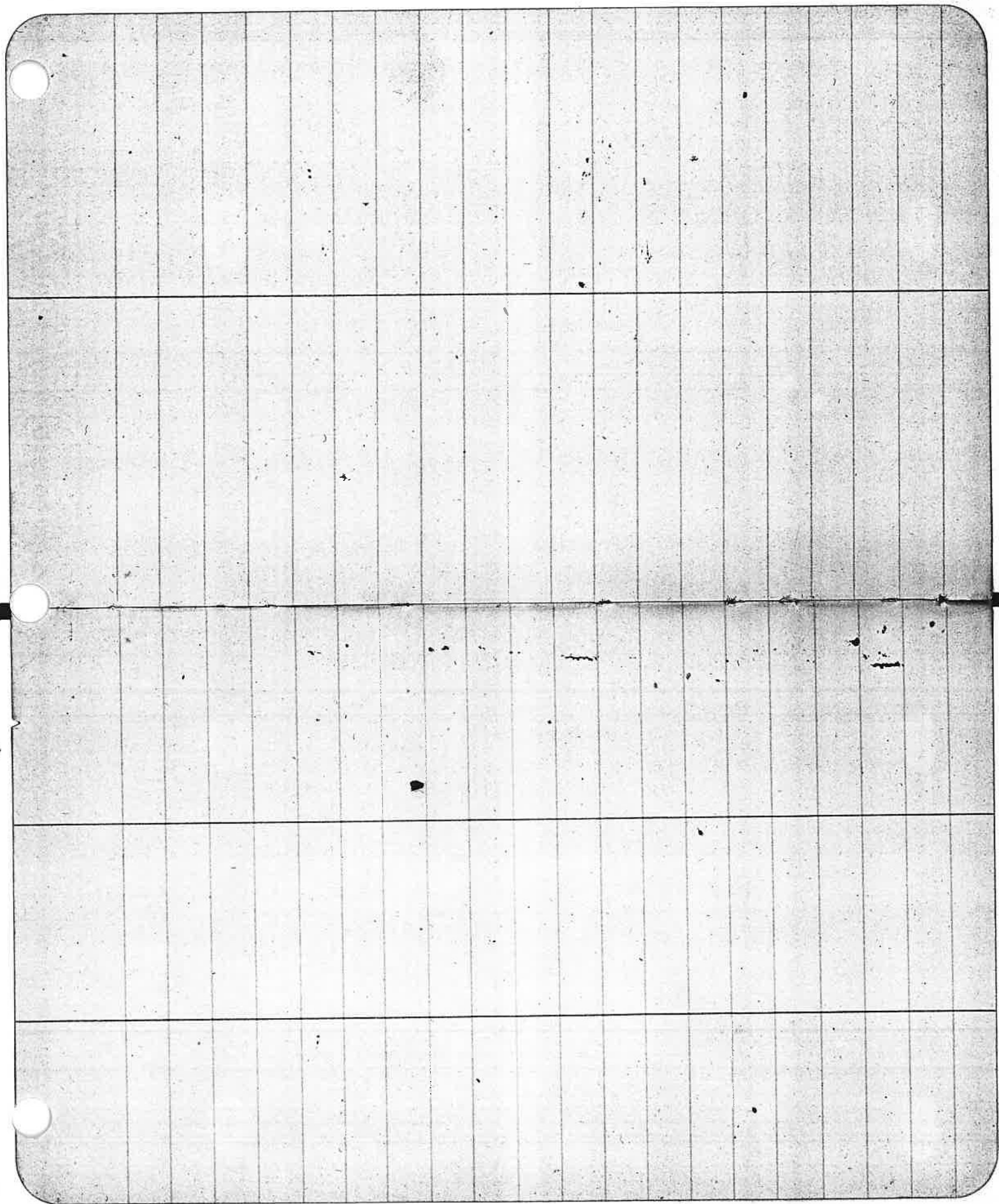
Oct 12 p 11

# Index Book No. 2

Name	Sec/DLC	Twp and Rng	Cor established	Date	Page
Alexander, J.A. Thos Schrum	DLC 26	3		July 13, 1911	55 - 57
Burnett, U.S.	DLC #42	6		February, 1911	50 - 54
County Roads Glendale	Sec 4	6		February, 1911	7 - 9
"	Sec 13 #14	4		" 20/1911	11 - 17
"	4-5-8-9	6		" 23/ "	18 - 23
"	June 12/1911	43		April 20/ "	44 - 47
Glade	23 - 24	5		March 30/11	32 - 37
Cobb, W.L.	"	"		"	25 - 26
Daily, A.M.	"	"		"	26
Fallon, C.D.	"	"		"	"
Govt field notes	29 " 5	6		"	45
"	28 " 6	6		3/1/11	46
"	29 " 6	6		"	47
"	29 " 6	6		"	49
Herrman	14 and 15	Myrtle Creek		May 12/11	59 - 60
Jackson St	Roseburg Ore			"	28 - 31
Level Notes	no information			May 3/1911	34 - 42
Miller, S.C.	28 and 29	6		"	58
Riter & Moore	29 - 6			"	33
Car				"	
Shell Oil Co	13	T27-6		Mar 27 1913	65

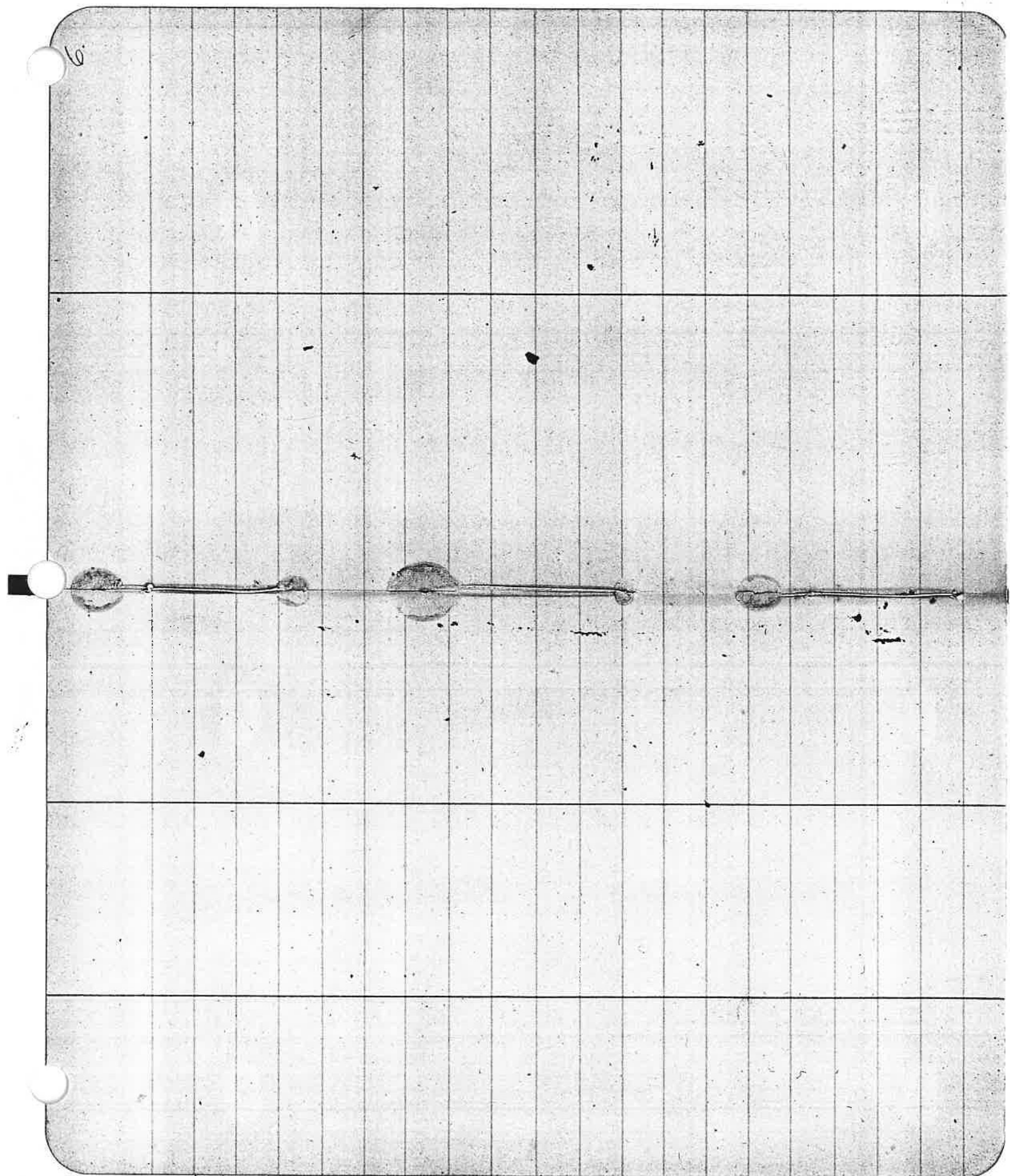
(Gardner) 61-64  
 (Carter) 61-64  
 (Baker) 61-64  
 1-2-11-12  
 1-29-6

3.



5

6





12 1/2  
5 1/2  
7  
8

- Same -  
Sum

part moved

RIM from which

a white pin 16 in moved Rim B3 for 87m 59.65

S 23 3/4° W

1.57

1.57

S 35° W

3.00

4.63

S 24° W

1.81

6.44

S 5 1/2° W

1.24

7.68

S 1 1/2° E

3.45

11.13

S 25 1/2° E

1.45

12.58

S 4 1/2° E

2.73

15.31

S 23 1/2° E

3.00

18.31

S 33 3/4° E

1.30

19.61

S 65 1/2° E

1.58

21.19

S 88 1/4° E

1.38

22.57

S 8° E

1.19

23.76

S 15 1/2° E

1.26

25.02

S 56 1/2° E

2.89

27.91

S 77° E

1.32

29.23

N 82 1/4° E

3.30

32.53

N 71° E

2.34

34.87

S 23° E

7.2

35.59

168. Leave Gooding Enter Grinnager Land

Intersect Sec line betw Secs 10 & 11 3 1/2 S. 1/2 S. 1/2 E.

72. Leave Grinnager Enter Ore. Idaho Land

at 40 c + 5550 W Bridge 165 ft 85 ft high



Survey for a position for a  
beginning at East line of Sutter

bray Sec 4, T<sub>4</sub>P 33-S R 6W

N 73 1/2 W

S 17

N 89 1/4 W

S 17.03

10  
Co Road, in Clara Station, Nevada

and 11.28 ch South of the 1/4 cor. monument

on Sutter Ave

" Clara St. to center of Co Road

from which the N.W. cor. of Block 1580 1/2 S 23 + 0.150

July 20 1911

Survey of a Co Road

Center of Co Road 1729 West

49 Collins, Bed Area shown

Sea front marked B from

N 26° E	2.78 ✓	2.78
N 20 1/2 W	2.27 ✓	5.05
N 3° E	2.19 ✓	7.24 ✓
N 36° E	2.07 ✓	9.31 ✓
N 14 1/2° E	6.58 ✓	15.89
N 31 1/2° E	12.45 ✓	28.34
N 69 1/2° E	3.29 ✓	31.63
N 85 1/2° E	2.09 ✓	33.72 ✓
N 33° E	1.45 ✓	35.17
N 61° E	4.19 ✓	39.36
N 30 1/2° E	2.10 ✓	41.46
N 17 1/2° E	2.52 ✓	43.98 ✓
N 58 1/2° E	2.00 ✓	45.98
N 54 1/2° E	2.96 ✓	48.94
N 87 1/2° E	2.15 ✓	51.09

Sept 9 1911

beginning at a point in

1/4 sec but lies 137-24 228-4

993 and in area

which - Van 20° 30' E -

a Cedar 18 in marked B B B to S 84 1/2° E 57.210

on Road of George Gordon's E. corner

Bridge 40 ft high  
320 ch my N 115° E

22.5 LEARS ON S. M. O. S. S. S.

$\frac{47.1}{51.9}$   
 $\frac{51.9}{2.97}$

$\frac{29.01}{51.9}$

S 84 1/2° E	2.30	✓	57.09	
N 88 1/2° E	2.71	✓	53.39	
N 84° E	2.88	✓	55.60	
S 66° E	1.16	✓	58.48	
S 78 1/2° E	1.98	✓	59.58	
N 85° E	1.73	✓	61.56	
N 89 1/2° E	1.30	✓	63.27	
N 88 1/2° E	2.08	✓	64.54	
N 74 3/4° E	2.31	✓	66.67	at 160.6 m Bridge 165 ft long 45 ft high
N 87 1/2° E	2.63	✓	68.98	
S 87° E	1.44	✓	71.61	
S 81 1/2° E	2.74	✓	73.05	ENTER VENTURE
E 85° E	2.82	✓	75.79	
S 79° E	1.89	✓	78.61	at 223
S 79° E	1.89	✓	80.96	at 223
S 79° E	1.03	✓	1.03	SUN POST MARKED R1 M
S 72 1/2° E	3.13	✓	4.16	at 2.20 S with 8/4 post in earth surface
N 70 1/2° E	3.10	✓	7.26	at 2.20 S with 8/4 post in earth surface
N 56° E	2.17	✓	9.43	at 2.50 creek cul 12 m at 90°

at 223  
 at 223  
 at 2.20 S with 8/4 post in earth surface  
 at 2.20 S with 8/4 post in earth surface

SUN POST MARKED R1 M

at 2.20 S with 8/4 post in earth surface

at 2.50 creek cul 12 m at 90°

$$\begin{array}{r} 2243 \\ 943 \\ \hline 3186 \\ 3019 \\ \hline 167 \end{array}$$

$$\begin{array}{r} 2243 \\ 943 \\ \hline 3186 \end{array}$$

S 66° E	✓	143	943	
N 89½° E	✓	211	12,977	
N 82° E	✓	244	15,411	
S 88° E	✓	169	17,10	Leaf-Kentiski Entry Garamets Land
N 84½° E	✓	166	18,704	
S 81° E	✓	202	20,72	
N 84° E	✓	166	22,38	
N 61½° E	✓	214	24,53	
N 29° E	✓	108	26,14	
N 64½° E	✓	123	27,33	
N 27¼° E	✓	422	3,155	Opposite 999 and Mrs. Bergen
N 44½° E	✓	543	36,98	
N 107½° E	✓	201	39,29	
N 47¼° E	✓	306	41,35	
N 50° E	✓	251	43,82	
N 74¼° E	✓	504	48,90	at 20 Leave Garamets Entry Mary E Hudson Land
N 45½° E	✓	523	54,13	
N 58½° E	✓	415	58,18	
N 89° E	✓	453	62,81	at 270 Garmet Bridge 20ft 8ft high
N 50½° E	✓	493	67,74	

N 43 1/2° E	3,603 ✓	87	67,250
N 36° E	448 ✓		71,37
N 67 1/4° E	324 ✓		75,85
N 57° E	91 ✓		79,09
N 57° E	145 ✓		80,00
N 57 3/4° E	445 ✓		145
N 60 3/4° E	469 ✓		5,90
N 47° E	3100 ✓		10,59
N 60 1/2° E	135 ✓		13,59
N 88 1/2° E	130 ✓		149,4
N 79 1/4° E	220 ✓		162,4
N 80° E	607 ✓		18,44
N 75 1/2° E	371 ✓		24,51
N 78 1/4° E	272 ✓		29,22
N 70° E	368 ✓		31,94
N 65 1/2° E	525 ✓		34,22
N 59° E	280 ✓		38,87
N 60 3/4° E	319 ✓		41,87
N 71 1/4° E	419 ✓		44,12
			49,05

Six post marked 2 M from which  
a wire 14 in. brs. N 49° W 58 1/2 S

204 2/18 Intersect Section bet 17 and 18  
Leans Nags, Enters R.  
130 East of Section 78, 1718 - 28-3  
Enter D.S. Collins Land  
2430 Creek Bridge 24 ft 10 ft high  
on Collins

on 100 Enter Section 100 on Leans Collins

S 76° E	468 ✓	49,000	418 Creek 125 ft long 8 ft high 33 Hoare Dolan Entero Marston's Sand
N 83 1/2° E	353 ✓	57,220	
N 79° E	247 ✓	59,730	
N 81 1/2° E	461 ✓	64,340	
S 83° E	520 ✓	69,540	
N 81 1/4° E	240 ✓	71,940	
S 73 1/2° E	360 ✓	75,540	
S 86 1/2° E	446 ✓	80,600	at 170 First Row Marston's Land Lease Junction Semi part marked R 32m from which a net 14 ft long 8 1/2 ft wide
S 74 3/4° E	500 ✓	3,000	
S 87° E	207 ✓	5,070	
N 83° E	275 ✓	7,820	
S 72° E	286 ✓	10,680	
N 65° E	1346 ✓	14,140	
N 82 1/2° E	250 ✓	16,640	100. Upstream <sup>500</sup> S 1/2 E line 105+8.59
N 77° E	367 ✓	20,310	
N 51 1/4° E	360 ✓	23,960	
N 79 3/4° E	299 ✓	26,190	
N 74° E	232 ✓	29,220	

30055  
49116  
10000

5

24 528  
509  
8

29, 32

N 71 3/4 E	2.81	✓	32, 03
N 74 1/2 E	4.53	✓	36, 52
N 62 1/2 E	4.44	✓	41, 20
N 66 3/4 E	3.90	✓	45, 10
N 81 1/2 E	3.20	✓	48, 50
N 65° E	2.55	✓	50, 85
S 85° E	3.81	✓	54, 66
S 64 3/4 E	3.52	✓	58, 18
N 66 1/4 E	3.52	✓	61, 44
N 88 1/2 E	4.29	✓	66, 33
S 58° E	3.02	✓	69, 55
S 68° E	2.49	✓	72, 64
S 84 1/4 E	5.09	✓	77, 13
S 81 3/4 E	2.87	✓	80, 00
5078			
S 81 1/2 E	1.93	✓	93
N 36 1/2 E	2.26	✓	3, 19
N 26° E	2.95	✓	6, 18
N 85° E	1.97	✓	8, 11

SET POST MARKED R.M. FROM WHICH  
 (TRD SIX 301m WSK 290N 351K5)

S 42 1/4 E

238 ✓

8.11

N 83° E

195 ✓

10.19

S 82 1/2 E

414 ✓

12.44

S 81° E

429 ✓

16.58

S 59 3/4 E

250 ✓

20.87

to a point 20.48 North of the Spr

of Sec 9. 10. 15 File Sp 28. 5 R 3 W

to a head for 8 in dia 5 in work

4 27 FEB 12 in bis N 89° E 27 115

1 Feb 18 11 5 18 W 31 11

U F Collins chairman 2 days

Fred Brown 2 "

A J Gardner - member 2 "

Joe Bonnell chairman 1 1/2 days

Donarsten - 2 "

July 23 1911

Survey of a Co. Road

E. J. Fong Royer marker

Beginning at a point

of the corner of Secs 4, 5, 8, 19 T. 29 N. R. 6

near G. J. Royer marker

in center of Co. Road 22.52 East

54 a post marked B from which

a block was 30 in marked B. B. 60 x 85' E 55 = 8

On land of E. J. Rice

2 string gages

371  
var 20'E

618.3

1183

1551

1786

2081

2413

2713

3207

3380

3591

3850

4350

4650

5289

S 25 1/2 W ✓

S 15 1/2 W ✓

S 42 W ✓

S 87 W ✓

S 6 1/4 W ✓

S 56 1/2 W ✓

S 5 1/2 W ✓

S 54 W ✓

S 25 W ✓

S 31 1/2 W ✓

S 58 1/2 W ✓

S 33 1/2 W ✓

S 49 W ✓

S 65 1/2 W ✓

S 26 1/2 W ✓

at 40 creek culvert 2 x 2 511 8 516 along

30 Creek Culvert 6 in

50 Rice Creek Bridge 40 ft 8 ft high

Enter string gages

20 Creek Culvert 24 in Enter string gages

19  
 2403  
 52.89  
 7.9

0157-51111  
 02132 Enter Fencing  
 End of fence ✓  
 at 86 Creek Bridge 30.5r 10ft high - Sloosway  
 500 pgs + marked Rim from which  
 a m Oak 28 m marked Rim 25.5r 18 m  
 at 25 Creek Bridge 65ft 55ft high  
 70 Year Double Fence

Same	Same	52.89
S 61 1/4 N ✓	2.68 ✓	✓ 55.57
S 53 3/4 N ✓	2.92 ✓	✓ 58.49
S 54 1/2 N ✓	3.67 ✓	✓ 62.16
S 29 1/2 N ✓	2.98 ✓	✓ 65.14
S 68° N ✓	3.49 ✓	✓ 68.63
S 58 1/2 N ✓	5.18 ✓	✓ 73.81
S 2° N ✓	1.26 ✓	✓ 75.07
S 17° E ✓	1.85 ✓	✓ 76.92
S 26° N ✓	3.08 ✓	✓ 80.50
S 26° N ✓	10.55 ✓	✓ 10.55
S 6° N ✓	1.57 ✓	✓ 12.12
S 49° N ✓	1.91 ✓	✓ 14.03
S 50 3/4 N ✓	2.08 ✓	✓ 16.11
S 28 m ✓	1.52 ✓	✓ 17.63
S 20° N ✓	2.39 ✓	✓ 20.00
S 23° N ✓	1.34 ✓	✓ 21.36
S 16° N ✓	1.77 ✓	✓ 23.17
S 15° N ✓	86 ✓	✓ 23.99
S 08 3/4 N ✓	2.84 ✓	✓ 26.83

S 15 1/2 W ✓	Same - ✓ 188	2683	2871	587	97 78 85	87 96	20 36.83 26.87 33.5
S 17 1/2 W ✓	233 ✓	3104	3565				
S 17 1/4 W ✓	461 ✓	3822	3980				
S 20 1/2 W ✓	297 ✓	4128	4315				
S 38 1/2 W ✓	118 ✓	4475	4655				
S 2° E ✓	148 ✓	4841	4957				
S 2 1/4 W ✓	187 ✓	5103	6145				
S 8° W ✓	160 ✓	6303	6414				
S 19° W ✓	180 ✓	6682	7150				
S 16 3/4 W ✓	182 ✓	7598	7700				
S 6 1/4 W ✓	116 ✓	8000					
S 0 1/2 E ✓	146 ✓						
South ✓	1042 * ✓						
S 45 1/2 W ✓	158 ✓						
S 28 1/2 W ✓	111 ✓						
S 29 1/4 W ✓	268 ✓						
West ✓	428 ✓						
S 9 1/2 W ✓	448 ✓						
S 2 1/4 W ✓	102 ✓						
S 20 1/2 W ✓	300 ✓						

\* 1/2 Strip of 5 acres

31 + car + TRICE + MIST J.M. Henrrys Lane

on Dividing Line bet. Rice & Henry

W. hand of Ed Rice - Lease Henry of 80

3 W See next page

Set post marked ZM

from which

a pit 13 in wide by 18 7/8 in 34 lbs

✓				
✓	8 23 1/4 W ✓	2.54 ✓	2.54	
✓	5 31" W ✓	1.62 ✓	4.20	
✓	5 32 1/2 W ✓	1.70 ✓	5.90	
✓	5 13 1/2 W ✓	1.84 ✓	7.74	
✓	5 40 1/4 W ✓	3.35 ✓	11.09	
✓	5 28 1/2 W ✓	3.17 ✓	13.26	
✓	5 15 3/4 W ✓	2.31 ✓	15.57	
✓	5 21 1/2 W ✓	4.78 ✓	20.35	
✓	5 14 1/2 W ✓	1.12 ✓	21.47	
✓	5 10 1/4 W ✓	3.17 ✓	24.64	
✓	5 26 1/2 W ✓	.87 ✓	25.51	
✓	5 49 1/4 W ✓	3.12 ✓	28.63	
✓	5 35 1/4 W ✓	4.05 ✓	32.68	
✓	5 38 1/2 W ✓	4.33 ✓	37.01	
✓	5 31 1/2 W ✓	1.67 ✓	38.68	
✓	5 19 1/4 W ✓	2.24 ✓	40.92	
✓	5 22" W ✓	2.30 ✓	43.22	
✓	5 31" W ✓	2.45 ✓	45.67	

Leave E L Rice Enter RR Cars at 194  
 At 592 Leave RR Enter Escalator HM Barrett  
 On Alton and Barretts Land

at 80 eulvert 24 inch  
 by eulvert 24 inch

523° W	✓	128	✓	46,95
510° E	✓	378	✓	50,73
53° E	✓	434	✓	55,07
519 1/2° W	✓	548	✓	60,55
539° W	✓	741	✓	61,96
561 1/2° W	✓	313	✓	65,09
542 1/2° W	✓	354	✓	68,63
536 1/2° W	✓	171	✓	70,34
535 1/2° W	✓	194	✓	72,28
51 1/2° E	✓	107	✓	73,35
539 1/2° W	✓	247	✓	75,82
531 1/2° W	✓	418	✓	80,05
529 1/2° W	✓	293	✓	2,98
556° W	✓	218	✓	5,11
530° W	✓	680	N	11,91
561 1/2° W	✓	10,07	✓	21,98
569 1/2° W	✓	422	✓	25,20
563 1/2° W	✓	386	✓	29,06
562 3/4° W	✓	275	✓	32,81

#330 Rice Creek Bridge 50ft long 65ft high  
6 PM July 23 1915

(ON 531ks a point 2000 South of the N corner of Sec 20)  
br mesh 291ks leave 1800 with 2 meter  
Allen's bar 2-53

on banks of Allen

at 30 culvert 24 mms

Set post marked R3m from utility

at 51x20 m bis S-80° E-851ks

at 94 leave Allen Enter RR road

LEARN

leave RR Enter W.B. Myers land

at 100 Bridge 20ft 65ft high

32.81

36.81

39.22

42.18

45.86

48.35

49.48

54.52

57.73

60.73

63.32

68.29

74.17

77.85

79.63

80.00

263

S50 1/4 N ✓

N 86° W ✓

N 69 1/2° W ✓

S 37° W ✓

N 89 1/2° W ✓

S 61 1/4° W ✓

S 45 1/2° W ✓

S 57 1/4° W ✓

S 73 1/4° W ✓

S 63 1/4° W ✓

S 64 1/2° W ✓

S 74 1/2° W ✓

S 62 1/4° W ✓

S 75 1/4° W ✓

S 54° W ✓

S 56 1/4° W

at 250 Rice Creek Bridge 40ft long 12ft high  
at 200 Leave Royer Entrance <sup>H</sup> Bowers Land

Set post marked R 4 m from which

a Fir 20m in dia. brs N 89° W 34 lks -

to a point 409 North of S of S 1924 P 330  
in 4th Range 6 T. W

which

Set post marked R 8 m

a Fir 32m brs N 3 1/2 E 7 1/2 lks S by

214 N 181 " N 11° E 32 lks

July 28 - 1911

a/c Rice Creek road

E. F. Long, chairman 2 days

Ray Mason " 2 "

G. J. Boyer " 2 "

A. B. Swain, member 1 "

129 d R. 5 W

Dec. Cor 14-15-22-23

W.O. 24" N. 87° E. 71

Alder 18" S 30° E 96

Alder 8" N 43° W 137

Alder 14" S 75° W 27

1/4 Cor Dec 22-23

B.O. 18" S 65° W 26

B.O. 15" S 40° E 15

1/4 Cor Dec 23-24

B.O. 18" N 85° W 34

B.O. 8" N 63° E 44

Dec Cor 13-14-23-24

Balw 86" S 10° W 31

W.O. 12" S 45° E 229

M. J. H

1/4 Dec 13-14

B.O. 12" N. 25° W. 47

B.O. 10" S 45° E 60

Dec Cor 11-12-13-14

Land 8' N. 50° W. 114

W.O. 20" N. 15° E 92

W.O. 30" S 83° E 37

B.O. 12" S 77° W 250

1/4 Dec cor 11-14

B.O. 16" S 30° W 176

B.O. 10" N 27° E 162

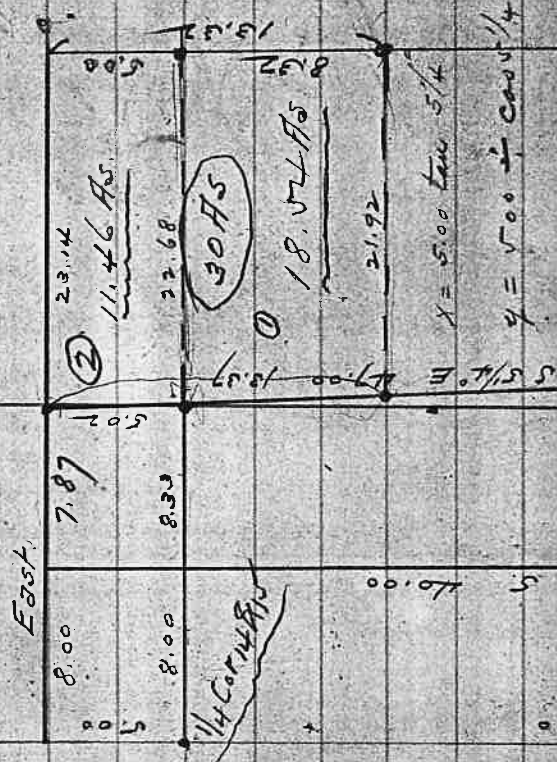
1/4 Dec Cor 14-15

W.O. 10" N. 65° W 78

W.O. 14" N 68° E 57

T. 29 S. R. 5 W.  
Sec. 14

- Dec Cor 10-11-14-15
- B.O. 16" S 15° E 24
- B.O. 18" N 35° E 14
- B.O. 12" S 23° W 34
- W.O. 14" N 65° W 37
- 1/2 Dec Cor 14-23
- Ash 14" S 55° E 34
- Maple 8" N 86° W 28
- 1/4 Dec Cor 25-26
- Red Fir 20" N 30° W 62
- Red Fir 15" S 37° E 43
- 1/4 Dec Cor 24-25
- B.O. 12" N 75° E 23
- B.O. 12" S 15° W 35
- Personato, S 15° E 1050



① C.D. Fallon.  
② A.M. Dailey.

$X = 5.00 \tan 5 1/4$   
 $Y = 5.00 \frac{1}{2} \cot 5 1/4$   
 $1968 \times 5.00 \times 5.02$   
 $17000$   
 $9008$   
 $109189$   
 $45945$   
 $1587$   
 $1629$   
 $7908$   
 $24790$   
 $21000$   
 $19918$   
 $10820$

Tally 1111

J. 29 d. R. 5 W. Survey for W. Cott. 3/30/11

Began at 1/4 Sec. Cor. bet Sec. 23 and 24

thence East, 40.00 chains. (Var. 20° 17' E)

thence South 20.00 ✓ (Var 19° 43' E)

thence East 770 ✓ (Var. 20° 17' E)

South ✓ (✓ 20° 17' E)

Setbacks 774 III

III

I

II

Ad. from D. C. D. Line 24/30

W ✓ bet Sec 25 20 chns

N ✓ in Sec 25 20 ✓

W

IIII

III

IIII

2430

478 P 30 L

Survey for Herman

East from 1/4 Sec Cor 16.35 intersect E line

Track #12

East: 22.68 chrs. to N. 85.4 mi thru

center of Sec.

(111)

||||

16.35

16.33

40

16.30

28.65

8.

7.15

20.

2.50

26

23.75

22.50

22.68

6

Survey for Ell. Herman 3/1

Reg. at cor Dec 14-15-22-23

Thence S 62° 7' E 14.62

∠ 29° 12' N 0.65 to point A

On West Bank of creek in cor. of

N. Myrtle Creek Road on Random

∠ 23° 40' E 2.74

∠ 34° 00' E 3.32

∠ 30° 20' N 1.85

∠ 37° 30' N 0.65

∠ 35° E to P. line of N 1/4 N. W 1/4 Sec 23

S 80 1/4° W 0.96 to W. Bank of Hamilton Young Cr.

{ at 100 chains W. Bank of My Creek to Chas R.  
S 62° W - 1.00 to W. Bank of My Creek

{ to point on W. Bank of My Creek at junction  
W. Bank of  
with N. Myrtle Creek

Beginning at point A

N. 26 1/2° E. 3.65 along center of county road to iron pin on W. line of land owned by Beersons, 1.20 chms. N 37 1/2° W. from stake on E. Bank of N. Myrtle Creek.

Thence following meanders of Right Bank (offset line) to stake on East line of Beersons land on R. Bank of N. Myrtle Creek  
Thence N 5 1/4° W 2.41 to center of county road.

Thence N 73° E 3.40 along center of county road  
N. 52° 30' E 4.64 to center of county road  
S 22 1/4° E 1.69 to center of county road  
From Iron Pin on Random Line S 89 1/2° E 5.12 to S. Bank of Bulger Creek in Co. Road.  
Thence S 82° E 4.36 (along Co Road)

Approach to end of creek on E side of creek

County Road

to iron pin for corner

of Creek.

This course along Co Road

S 5 1/2° E. 90 to center of Myrtle Creek

at 1.50 Chk of Myrtle Creek 1.60 South

S 18° W 1.75 to ch

d. 50' 10" E. 3.63 to pt on N + S. ctr line  
of Dec 14

Thence S. along N. + S. ctr line 2.00 to  
center of creek near <sup>700</sup> S. 1/4 corner of Dec 14  
Also move N. along <sup>700</sup> center line of Dec 14  
to S. E. cor Fallin track

XXX

$$\begin{array}{r} 10.32 \\ 2\sqrt{\phantom{00}} \\ \underline{4.50} \\ 40.13 \end{array}$$





Survey for S.C. Miller, Dillard.

Lat. 43°07' H.D. + 44.67" May 3, 1911.

Hour App. Dec. Ref Cor. Dec.

4 A.M. 15° 25' 24.1"

4' 28.42"

10 A.M. 15° 29' 52.12" + 35" 15° 30' 27.12"

24.66  
20.175  
44.75

44.75  
43.187  
44.687

20.09  
1.15  
100.45  
200.9  
25.30135

44.75  
253.0135  
223.75  
29.260  
266.50

46.87  
253.000  
234.35  
187.48

44.75  
44.34  
4.34  
93.84  
46.92

Begin at 1/2 Dec. Cor. let Dec 28-29 J. 28-6  
(or 20°52'E)

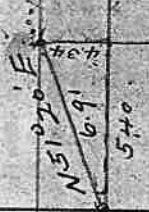
Thence S 89°50' W, on E + W 1/2 Dec line of

Dec 29, (Talleys III) 29.51 chains

Thence N (Talleys III) 20.09 ✓

" W 0.15 ✓

" N (Talleys III) 24.66 ✓



46.92  
56.40  
187.680  
73.460  
25.33680  
- 80.135  
25.03545

Sec 28

60.64  
44.75

20.09

5.25

29.51

1/45

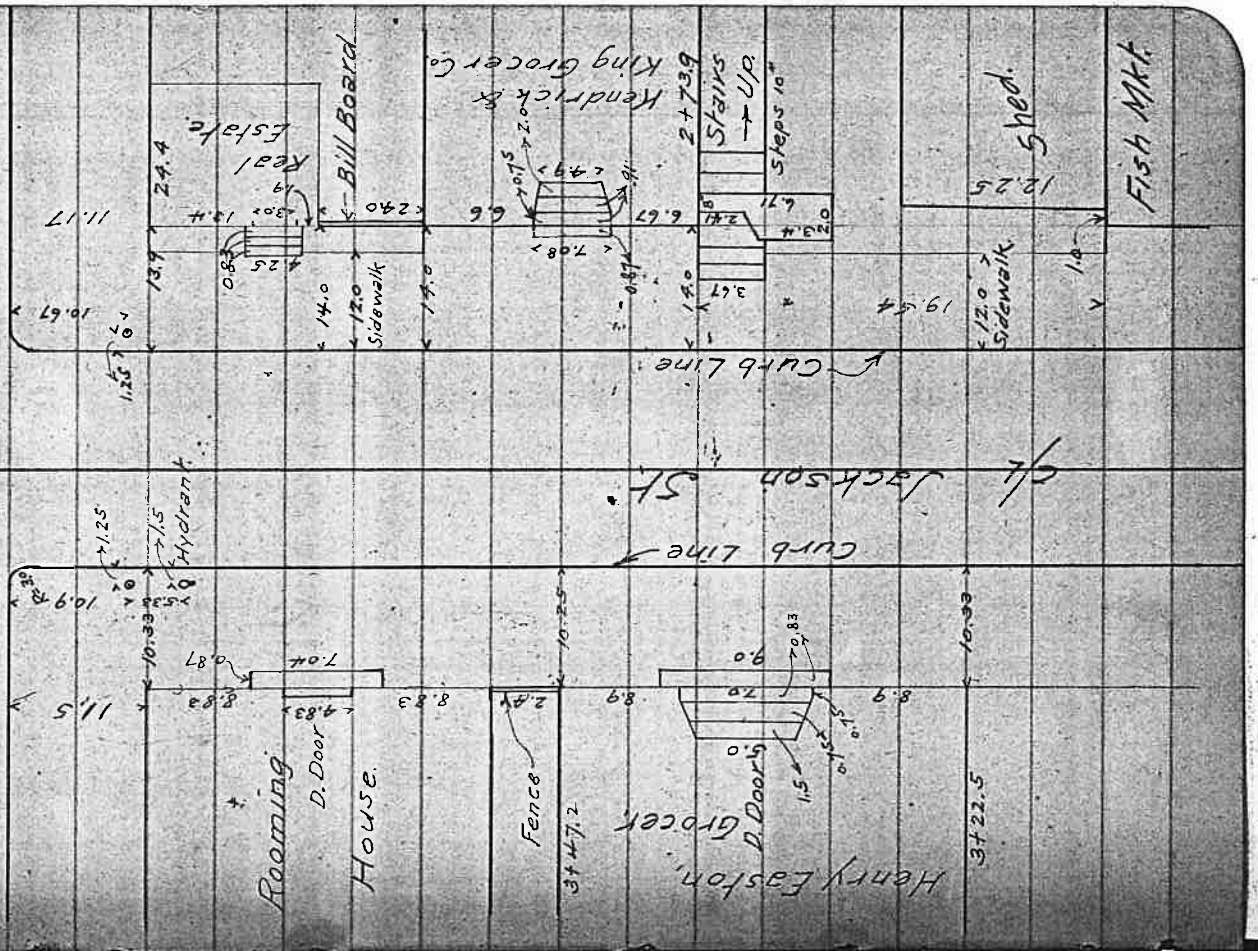




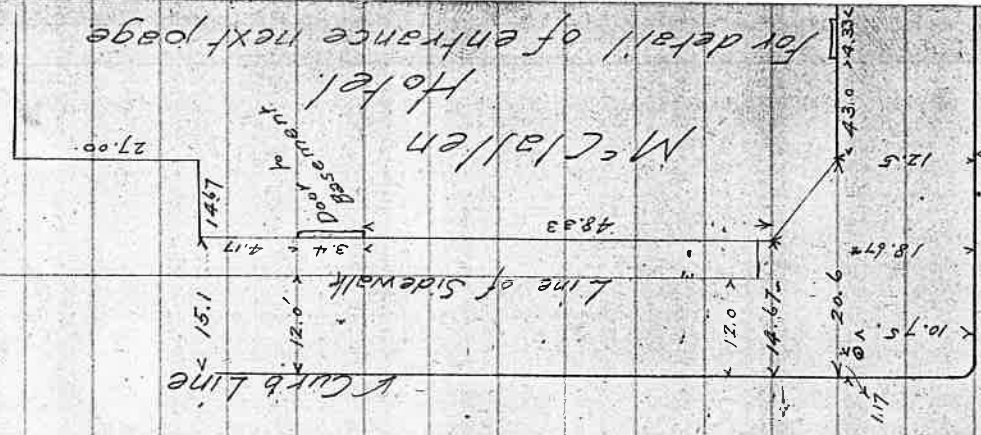


St

Douglas



38



Jackson St

Curb Line



Douglas

St



C.C.B. Level }  
 F.C. Rod }  
 May 22<sup>d</sup> 1911.  
 Douglas Street

Top of foundation  
 of W. & L. Office.

Curblined  
 Jackson St  
 Curblined

9' x 9' x 9' x 9'

Real Estate  
 Campbell

China Sams

Commercial

Abstract Co

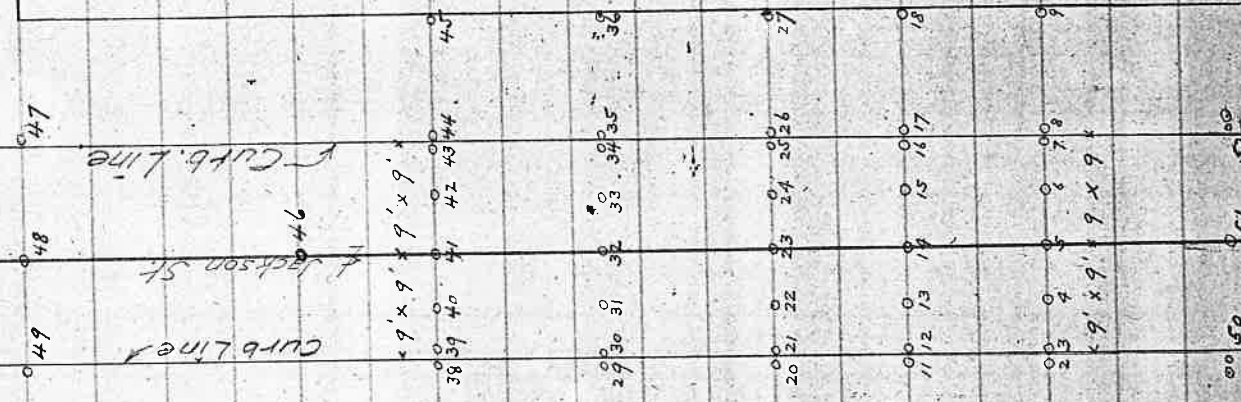
J Millikin

Water &

Light Office

Elevations on Jackson St.

Sta	t	π	-	Elev.
B.M.	2.92	102.92		100.00
1			4.05	98.87
2			4.32	98.60
3			4.82	98.10
4			4.17	98.75
5			3.77	99.15
6			3.74	99.18
7			4.09	98.83
8			3.62	99.30
9			3.43	99.49
10			4.89	98.03
11			5.10	97.82
12			5.61	97.31
13			4.92	98.00
14			4.51	98.41
15			4.46	98.46
16			4.79	98.13
17			4.33	98.59
18			4.02	98.90



Sta	T	-	Elev.
19	102.92	5.67	97.15
20		5.94	96.98
21		6.47	96.45
22		5.82	97.10
23		5.41	97.51
24		5.34	97.58
25		5.70	97.22
26		5.12	97.80
27		4.87	98.05
28		6.73	96.19
29		6.95	95.97
30		7.46	95.46
31		6.72	96.20
32		6.31	96.61
33		6.25	96.67
34		6.53	96.29
35		5.96	96.96
36		5.70	97.22

Sta	+	-	Elev.
37	102.92	7.68	95.24
38		7.85	95.07
39		8.32	94.60
40		7.57	95.35
41		7.16	95.76
42		7.13	95.79
43		7.44	95.48
44		6.91	96.01
45		6.61	96.31
46		8.00	94.92
47		11.61	91.31
48		11.74	91.18
49		12.80	90.12
50		3.02	99.90
51		2.42	100.50
52		2.80	100.62

Resurvey of Glide Road. 6/12/11  
 Begin at Initial Point. Re-established  
 from B.T. Fir 30" diam. S. 87 1/2° W 43 links  
 Other B.T. obliterated.

Thence we ran

N. 47° W (Var. 21° E) 1.89

N. 48 3/4° W 2.43

N. 31° W 1.73

N. 40 1/2° W 1.44

N. 42 1/2° W 2.00

N. 1 3/4° W 0.96

N. 15° W 1.40

N. 48° W 5.50

N. 48° W 10.38 (9.88)

X



C. E. Roberts  
 C. C. Boyer  
 M. Ryan

Begin at original stake East end of  
Course N 50 1/2° W 8.17 (error - should be

4.17) thence  
S 52° E (Recorded N 62° W) 3.08  
S 54° E 3.93  
S 72° E 1.18

Begin same point as above  
thence

1.0062	1.0062
2.0124	8.17
3.0186	70496
4.0248	10062
5.0310	80496
6.0372	30196x
7.0434	3.100096
8.0496	1.0062
9.0558	1.18
10.0620	80496
11.0682	10062
12.0744	1.157316
13.0806	1.0062
14.0868	1.12
15.0930	20124
16.0992	80496
17.1054	10062
18.1116	1.881284

Begin at W. end of Course N 50 1/2° W  
8.17

thence S 50 1/2° E 8.17 - 8.22  
3.08 - 3.10  
+ 0.09 S 54° E 3.93 - 3.95  
0.10 S 72° E 1.18 - 1.19  
0.18 S 68° E 1.82 1.83  
0.12 S 62 1/2° E 2.50 2.51 2.52

20.68	20.81	1.0062
	3068	
	130000	
	12488	
	720	
20.81	120000	1.006
	12486	
18.31	16.49	15.18
10.06	10.06	10.06
10.986	10.984	0.9108

8.17	11.25
10.06	10.06
0.9902	0.6750

S. Body 2285 R 6 W.

Cor Secs 1, 2, 35 and 36

a Y. oak 15" diam S 21° W

W. oak 10" " S 4° E

W oak 2" " N 85 1/2° E

Y " 24" " N 25 3/4° W 342' ✓

— " —

589° 57 1/2° W

On S. Bay of Sec 35.

Variation 18° 20' E

2.00 Top of ascent N. + S.

9.00 Enter Valley N + S.

12.00 Road to mines N 20° W ✓

14.81 Set Meander Post on

Right bank of River

An Oak 6" diam S 8 1/2° E 83. hicks

Y. oak 14" " N 6 1/2° E 966 ✓

Variation 18° 20' E

18.10 Set meander post on left

bank.

a Y. oak 18" diam N 75° W 60. hicks

A Y oak 24" " S 67 1/2° W 61. hicks

34.50 Top of Hill N. 85

37.50 Leave oak openings, enter

prairie N. + S.

40.00 Set 1/4 Post, from which

a Y. oak 9" diam N 13 1/2° E 306. hicks

a Y. " 26" " S 72 1/2° E 296. hicks

Enter Valley c. N.

79.10 Set meander + witness post on

Left Bank of South Musquea

River, from which

Palms 10" diam. S. 19° W. 300 hicks

" 20" " N 5° E 257 ✓

80.00 Corner to Sec. 2, 3, 34 and 35

in River

— " —

589° 57 1/2° W on South Bdy of Sec 34

2.76 Leave post and set meander post

from which

A tree 76" diam. S. 42° W. 90 hicks.

W. Oak 6" " N 14° E 50. ✓

8.00 Begin to ascend hill S 20° W  
 11.00 Top of hill, N & S.  
 21.00 Begin to descend N & S.  
 Ravine + trail ✓  
 34.50 High point in Cow Creek  
 Mountains S. 22° W.  
 40.00 Set 1/4 Post, from which  
 a W Oak 14" dia. N 26° E 142 lks  
 a W ✓ 15" ✓ S 47° E 115 ✓  
 Both Phipps House bears  
 S. 57° W 4.00 chains ↓  
 53.00 Leave Oak Openings enter  
 prairie N. 70° W  
 54.20 Trail c. N 70° W  
 Enter Valley N. 70° W  
 59.75 Enter field N. 20° E.  
 80.00 Set post cor to Sec 3 & 4  
 33 and 34 from which  
 a Y Oak 20' diam S 2° W 819 lks

Pine 40" diam. S 25° E 1004 lks  
 Y oak 28" ✓ N 2° W 1082 ✓  
 Y ✓ 12" ✓ N 8° E 1106 ✓  
 — 0 —  
 589° 57 1/2' W on S. Oak Sec. 33.  
 Variation 18° 20' E.  
 11.80 Leave field N. 10° E.  
 25.00 Leave prairie enter brushy  
 timber N. W.  
 33.16 Set meander post on right  
 bank South Sturgeon River.  
 from which  
 a. Y oak 24" dia. N 82 1/2° E 85 lks.  
 an Oak 6" ✓ S. 62° E 69 ✓  
 38.28 Set meander Post on Left Bank  
 W. oak 12" dia. S 29° E 20 lks.  
 W. oak 9" ✓ N 65° W 31 ✓  
 39.85 Stream 15 lks abt c. N. E. Set wooden post to 1/4 Sec cor  
 in creek, from which a Y oak 15" dia. S 79° W 44 lks  
 W. oak 10" dia. N. 27° E 28 lks.  
 40.00 1/4 Sec Cor in Creek. - 42.90 Same Creek O. E. - 45.50 Same  
 stream N. E. }  
 80.00 Cor. Poles 4-5-32-33 }  
 ✓ 14" N 37 1/2° W 48"  
 ✓ 28" S 37° E 260"  
 ✓ 16" S 49° W 185"

T. 29 S. R. 6 W.

Corner to Secs. 11-12-13-14.

a. Oak 8" diam N 75° E 327 links  
a. W. oak 20" ✓ S 55° E 480 ✓  
a. W. oak 18" ✓ N 8° W 750 ✓  
a. W. oak 12" ✓ S 87° W 39 ✓  
—° —

North bet Sec 11 & 12

40.00 1/4 Sec Post from which:  
B. oak 6" diam N 6° E 1000 links  
An Alder 10" ✓ N 8° W 1000 ✓  
45.50 Left Bank S. Myopna!  
48.25 Right ✓ ✓

80.00 Left Post cor. Secs. 1-2-11 & 12  
a. B. oak 15" diam N 50° W 38 links  
a. B. ✓ 6" ✓ S. 65° W 62 ✓  
a. W. ✓ 8" ✓ N 15° E 62 ✓  
a. W. ✓ 8" ✓ S 24° E 113 ✓

North bet Sec 1 & 2  
S 0° 15' E true line bet Sec 1 & 2  
40.68 Set 1/4 Sec Post  
B. oak 18" N 23° W 310 links  
B ✓ 15" N 5° E 260 ✓  
80.68 to Sec cor.

Corner Secs 10-14-14-15

B. oak 10" dia. N 37° E 46 links  
B. oak 12" ✓ N 7° W 435 ✓  
Laurel 4" ✓ S 58° W 240 ✓  
✓ 4" ✓ S 12° E 110 ✓  
—° —

North bet Secs. 10-11

40.00 1/4 Sec corner  
W. oak 8" N 45° W 81 links  
B ✓ 12" N 64 1/2° W 116 ✓  
80.00 Cor. of Secs. 2-3-10 & 11  
W. oak 10" S 7° E 17 links  
W ✓ 4" N 73 1/2° E 71 ✓

B oak 8" N 82 1/2° W 109 lbs  
B ✓ 16" S 21 1/2° W 31 ✓  
— 0 —

North bet Secs 2 + 3  
South

1.25 Leave South Olympia River  
18.50 ✓ Bottom

40.70 1/4 Sec Post  
B oak 10" S 21° W 20 lbs  
B ✓ 8" N 42° E 65 ✓

80.70 to Sec Cont  
— 0 —

Cont Secs 9-10-15 + 16  
Alder 8" S 25° E 284 lbs  
B oak 6" N 61° E 275 ✓  
Oak 16" N 23° W 215 ✓  
Oak 12" S 37° W 278 ✓  
— 0 —

North bet Secs 9 + 10.  
25.50 Willow Hb. N 10° W.  
24.50 Enter Hill.  
40.00 = 1/4 Sec Post

W oak 14" N 81° E 803 lbs  
B oak 10" S 65° W 889 ✓  
44.00 Leave field. Willow Hb. S 55° W  
64.50 Leave Bottom.

80.00 Set post cont 3-4-A-10.  
B oak 10" S 81° E 99 lbs  
W oak 20" N 42 1/2° E. 144 ✓  
W oak 24" N 27° W 142 ✓  
W oak 20" S 45° W 138 ✓  
— 0 —

50° 30' E Bet Secs 3 + 4  
14.90 R. Bank South Olympia  
18.30 L ✓  
40.44 1/4 Sec Cont

20.446 B oak 6" S 51° W 47 lbs  
60 Cont B ✓ 6" S 35° E 40 ✓

589°44'W True line bet Secs 10 + 15  
40.21 1/4 Sec Cont  
W. bank 20" S 18°W 70 lks  
B ✓ 20" N 11°W 21 ✓  
76.00 Stream 10 lks wide c. N.  
80.42 to Sec Corner  
— 0 —

589°33'W True line bet Secs 3 + 10  
40.18 1/4 Sec Cont  
B. bank 12" N 15°W 79 lks  
B ✓ 6" S 89°W 77 ✓  
61.00 Stream 10 lks wide c. N 20°W  
80.36 to Sec Cont  
— 0 —

589°45'W True line bet Secs 11 + 14  
40.18 1/4 Sec Cont  
W. bank 18" S 45°W 28 lks  
W. ✓ 18" N 30°E 69  
80.36 to Sec Corner.

589°37'W True line bet Secs 2 + 11  
15.50 R. Bank South Huppau  
18.60 L. Bank ✓  
40.24 to Sec Bank  
B. bank 10" S 12°W 31 lks.  
B. bank 10" N 67°W 26 ✓  
80.48 to Sec Corner.

Mon. June 19th, 1911. Hr. Diff. = + 3.17"  
N 23° 25' 12.7" App. Dec. 4 A.M.  
22.19 Diff. for 7 hrs. ...  
N 23° 25' 34.89" + 24" Ref. (hr).  
24.00  
N 23° 25' 58.89" Dec for 11:00 A.M.  
— 0 —

John S. Burnett Cl. 42 - T. 29 S. R. 6 W

N.W. Cor. E. Oak 26" diam. S 72° E 507 lbs

S.W. Cor. W. Oak 13" " N 16° E 224 ✓

W. Line of Cl. 42

North.

2.00 Ascent of Ridge

12.89 Intersected Sec. Line

bet. Secs. 11 and 14, 22, 34

Chns. West of Sec. Cor.

30.00 Enter bottom prairie

63.00 Spring in small ravine

64.50 Left Bank S. Unmpqua,

triangulated, entered

level bottom prairie.

95.00 To the place of beginning

70.00 R. Bank of River.

Lat. 43° 03' to 43° 06'

Mon June 19th. 1911

N. 23° 25' 12.7" App. Dec. 4 P.M.

28.53" (9 hrs. Diff.)

N 23° 25' 41.23" + 0° 00' 24" Ref 1 Hr. = N 23° 26' 5.23" 1 P.M.

N 23° 25' 44.40" + 0° 00' 28" " 2 Hr. = N 23° 26' 12.40" 2 P.M.

N 23° 25' 47.57" + 0° 00' 36" " 3 Hr. = N 23° 26' 23.57" 3 P.M.

N 23° 25' 50.74" + 0° 00' 50" " 4 Hr. = N 23° 26' 40.74" 4 P.M.

N 23° 25' 53.91" + 0° 01' 19" " 5 Hr. = N 23° 27' 12.91" 5 P.M.

HR. Diff. + 3.17"



T. 29 S. R. 6 W.

Survey for W. Line J.S. Burnett Ch.

June 20th 1911.

(Var 21' 00" E)

North

52.50

52.83

55.00

57.05

59.50

60.00

64.50

65.00

69.45

70.00

Stake

Approx. Intersection

with E & W. Ctr. Line Sec. 11.

Blazed Oak Grob to West

Stake Small Marked (12) Tree

Cross Small Ravine

Bank of Slough

Stake in Bed of Slough

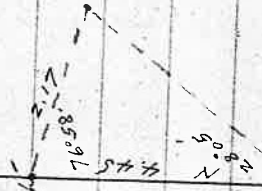
L. Bank of River

On Sand Bar

65.00

L. Bank

R. Bank



Tues. June 20th, 1911.

N. 23° 26' 16.5" App. Dec. 6.42" (3 hrs)

Hour Diff + 2.14" 4:00 A.M.

N. 23° 26' 22.92" + 1' 19" (Ref 5 hrs) = N. 23° 27' 41.92"

23° 26' 25.06" + 50" (" 4") = 23° 27' 15.06"

23° 26' 27.20" + 36" (" 3") = 23° 27' 3.20"

23° 26' 29.34" + 28" (" 2") = 23° 26' 57.34"

23° 26' 31.48" + 24" (" 1") = 23° 26' 55.48"

23° 26' 33.62" + 24" (" 0") = 23° 26' 57.62"

23° 26' 35.76" + 24" (" 1") = 23° 26' 59.76"

23° 26' 37.90" + 28" (" 2") = 23° 27' 5.90"

23° 26' 40.04" + 36" (" 3") = 23° 27' 16.04"

23° 26' 42.18" + 50" (" 4") = 23° 27' 32.18"

23° 26' 44.32" + 10' 19" (" 5") = 23° 28' 5.32"

53

12 Noon.  
1 P.M.  
2 P.M.  
3 P.M.  
4 P.M.  
5 P.M.

75.00 In Melan Patch Stake  
 80.00 ✓ ✓  
 85.00 ✓ Bean ✓  
 90.00 Near N fence Bean Patch Stake  
 95.00 567 Stake

North front Sec Cor 1-2-11-12 T29-b

West 1/2 to N. Line Burnett Cl. 42

5.00  
 10.00  
 15.00  
 18.11 - 50 1/2 N to Cor. Cl. 40  
 23.34 - 50 ✓ ✓ Cl. 42

Wed June 21st 1911  
 23° 26' 55.5" App. Dec 4.44  
 23° 26' 59.94 + 1.11  
 23° 27' 1.05 + 1.11  
 23° 27' 2.16 + 1.11  
 23° 27' 3.27 + 1.11  
 23° 27' 4.38 + 1.11  
 23° 27' 28.38" = 12 Noon  
 23° 27' 27.27" = 11 AM  
 23° 27' 30.16" = 10 AM  
 23° 27' 37.05" = 9 AM  
 23° 27' 49.94" = 8 AM  
 23° 27' 50.50" = 7 AM  
 Hk Diff + 1.11

54  
Begin at Stone S.W. Clark Ch. Fence

W. 5.20 chns for N.W. Cor. Burnett

Cl. No. 42 78 links East of

Line North from S.W. Cor of Cl 42.

Correct back to S.W. Cor Cl 42

Run  $5^{\circ} 28\frac{1}{2}'$  W for true bearing

W. Line

Survey for J. H. Alexander

T. 26 S. R. 3 W.

Thos Schrum D.L.C. # 42

Beginning at NW cor of C 42 on line between Sec. 18 + 19. Set post from which a W. oak 12" diam bears N. 80° W 112 links.

South on West Bay 12.50 to P bank of East Fork 150 links wide.

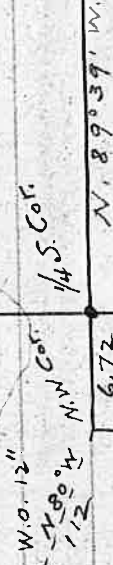
38.11 S.W. cor of C 42 from which a W. oak 15" diam bears S 55° W 125 links.

West on N. Bay of C 42 on line bet Sec 18 + 19

35.69 Quarter post

42.41 to NW cor C 42

— 0 —



Thomas Schrum

S.W. Cor

Diff Hr - 20.95

July 13, 1911.

4 A.M

(7 hrs diff)

$$N. \quad 21^{\circ} 58' \quad 1.16''$$

$$- \quad 1 \quad 28.80$$

$$- \quad 21^{\circ} 56' 33.30'' + 0^{\circ} 00' 50'' = 21^{\circ} 57' 23.30'' = 8A.$$

$$- \quad 21^{\circ} 56' 20.95'' + 00' 36'' = 21^{\circ} 57' 48.35'' = 9A.$$

$$- \quad 21^{\circ} 55' 51.45'' + 20.95'' = 21^{\circ} 56' 19.45'' = 10A.$$

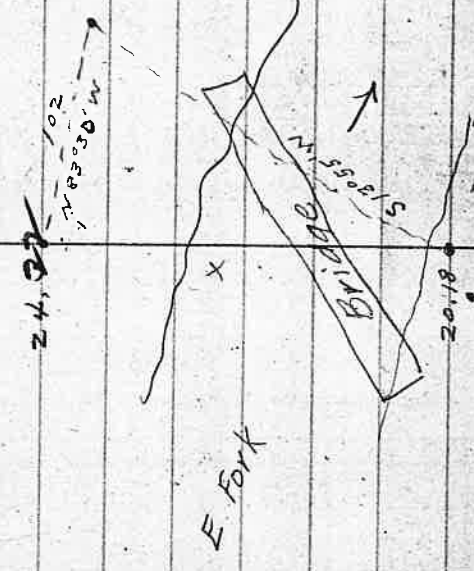
$$- \quad 21^{\circ} 55' 30.50'' + 20.95'' = 21^{\circ} 55' 57.45'' = 11A.$$

42

July 14 1911. Lat 43°18' Hr Dif. - 21.89  
 4 A M  
 N 21° 49' 26.9"  
 - 1' 5.67" (3 Hrs)  
 21° 48' 21.23" + R. 1'15" = 21° 49' 36.23" 7 AM  
 - 21.89"  
 21° 47' 59.34" + R 50" = 21° 48' 49.34" 8 AM  
 - 21.89"  
 21° 47' 37.45" + R 36" = 21° 48' 13.45" 9 AM  
 - 21.89"  
 21° 47' 15.56" + R 28" = 21° 47' 43.56" 10 AM  
 - 21.89"  
 21° 46' 53.67" + R 24" = 21° 47' 17.67" 11 AM  
 - 21.89"  
 21° 46' 31.78" + R 24" = 21° 46' 57.78" 12 M.

J. 26.5 R. 3 M.  
 Set at stump of W. J. to N. W. cor  
 Pl. 42. Measured S. 80° E 112 links.  
 Set down Bar 1/4" x 18"  
 Set stake. Theace S. 89° 39' E 6.72  
 chains to 1/4 sec cor bet. 18 + 19.

Began N. W. cor Ch. 42 running South  
 5.00 stake 1  
 10.00 " 3  
 15.00 " 3  
 20.00 " 4 on R. Bank of E. Fork



8330  
 13 45  
 107 25  
 72 35  
 18000  
 X = sin 72° 35'  
 102 sin 13° 55'  
 .2993  
 102  
 299.84  
 2405 39.5286  
 2405  
 9541  
 102  
 19082  
 9541 X  
 2405 39.5286  
 9620  
 11482  
 9620  
 15636  
 2405 39.5286 4044.6

July 14th 1911 Lat 43° 18'

21° 46' 31.78"  
- 21.89"

Noon.

21° 46' 9.89" + 0' 24" = 21° 46' 33.89" 1 P.M.

21° 45' 48.00" + 0' 28" = 21° 46' 16.00" 2 P.M.

21° 45' 26.11" + 0' 36" = 21° 46' 2.11" 3 P.M.

21° 45' 4.22" + 0' 50" = 21° 46' 54.22" 4 P.M.

21° 44' 42.33" + 1' 19" = 21° 46' 1.33" 5 P.M.

Sta	+	π	-	R	F	Grade
B.M.						
6						97.4
7						97.9
8						100.8
9						104.8
10						108.8
11						110.8
12						108.9
13						104.4
14						99.9
15						95.4
						93.6
						93.15
16						92.28
						92.00
17						92.00

+37  
+50

+50

T. 29 S. R. 6 W.

Cor Sec 14-15-22-23	14" diam N 24° E	500 lks.	North between Secs 15-16
W. Oak	4" " S 44 1/2° W	362 "	40.00 1/4 Sec Cor.
Laurel	14" " N 38° W	432 "	B. Oak 6" diam. S 46 1/2° W. 75 lks.
B. Oak	No. Tree near in Sec 23.		Red Fir 24" " S 48° E. 62 "
1.50	North between Secs 14 and 15.		74.50 + Stream. 15 links wide. c. N. N. E.
5.50	Enter prairie		80.00 Sec. Cor. 9-10-15-16
5.50	Stream 8 lks wide N 73° W		— 0 —
18.00	Leave Bottom		Cor. Secs. 8-9-16-17
38.00	Enter Rolling prairie		Laurel 14" diam S 50° E. 83 lks.
40.00	1/4 Sec. Cor.		B. Oak 8" " N 60° E. 28 "
	W. Oak 12" diam. S 53 1/2° E	81 lks	B. Oak 6" " N 26° W. 126 "
	B. " 6" " N 59° W	49 "	B. Oak 10" " S 45° W. 48 "
80.00	Sec cor of Secs 10-11-14-15		— 0 —
			5.89° W N True Line bet. Secs 9 & 16
Cor. Secs 15-16-21-22			40.24 1/4 Sec Cor.
B. Oak	4" diam. S 9 1/2° E	13 1/2 lks	B. Oak 10" S 21° W. 279 lks.
" "	6" " N 47° E	9 "	B. Oak 8" N 7 1/2° W. 222 "
W "	8" " N 37° W	163 "	
W "	10" " N 79° W	107 "	80.48 Sec Cor.

North bet Secs 8 and 9.

40.00 1/4 Sec Cor

B. Oak 20" S 78° E 283 lks

" 12" N 83° W 341 ✓

50.00 Stream 8 lks wide N.E.

80.00 Sec Cor. Secs 4-5-8-9

Ash 8" S 17° E 372 lks

W. Oak 6" S 88 1/2° E 106 ✓

B. Oak 14" N 48° W 160 ✓

B. Oak 10" S 37 1/2° W 330 ✓

— 0 —

S 89° 30' W. True line bet Secs 4 & 9

40.34 1/4 Sec Cor.

W. Oak 30" N 60° E 64 lks.

W. " 10" S 11° W 100 "

67.00 Enter Small Bottom

70.00 Stream 10 lks wide N 23° W

74.00 Leave Bottom.

80.68 Sec Cor

S 0° 21' E True line bet Secs 4 & 5

40.60 1/4 Sec Cor

W. Oak 18" N 71° E 148 lks.

B. " 14" S 61° W 48 "

— 0 —

Riter & Moore

T. 29 S. R. 6 W.

Begin at Sec. Cor. 10-11-14-15

Thence

North

40.00

Set Stake Temporary  $\frac{1}{4}$  Sec. Cor.

50.00

In Gully

79.20

Opp. Stake 40.00 chains S. of  $\frac{1}{4}$  S. Cor. bet 2 & 3

80.00

Stake. Approx. Location See cor

100.00

$\frac{1}{6}$  S. cor Stake

119.20

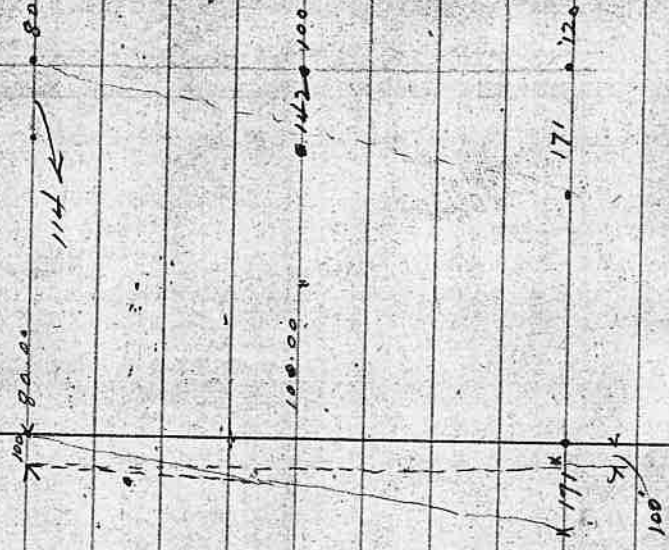
$\frac{1}{4}$  S. cor bet 2 & 3.

3/22/57



100  $\frac{1}{4}$  S. East

71  $\frac{1}{4}$  S. West of  $\frac{1}{4}$  S. Cor.



Set Stake Cor Sec 2-3-10-11 29/6

from which

W.O. 14" bears N. 65° E. 57 links

W.O. 5" " N 45 3/4 W 54 "

— 0 —

Begin at 1/2 Sec Cor Sec. 10-11 29/6

Thence N. 89° 40' E. (11

5.00

10.00

15.00

20.00

25.00

30.00

35.00

40.00

45.00

50.00

55.00

from which W.O. 8" diam bears N 62 1/2° W 53 1/2  
W.O. 10" " " S 82° E 47  
W.O. 8" " " S 24° E 22

In Canyon

Rocky Point

Made W.O. 14" diam Cor. for

Riter and Moore. Tree Marked. C.S.B.T.

Approx Ctr Sec 11 29/6



64

Begin at Sea Cove 2-3-10-11

5.00

10.00

15.00

20.00

20.09

25.00

30.00

35.00

40.

4018

Approx  $\frac{1}{16}$  5 cor.

on Point near W O

Approx  $\frac{1}{4}$  5 Cor



**Field Book No. 57**

**Pages 66 - 73 Blank**

August 23rd 1911.

N 11° 44' 55.2"  
 - 6' 44.16"  
 N 11° 38' 11.04"  
 - 50.52"  
 N 11° 37' 20.52" + 0' 34" = N 11° 37' 54.52" 1 PM  
 - 50.52"  
 N 11° 36' 30.90" + 0' 38" = N 11° 37' 08.00" 12 PM  
 - 50.52"  
 N 11° 35' 39.48" + 0' 48" = N 11° 36' 27.48" 3 PM  
 - 50.52"  
 N 11° 34' 48.96" + 1' 06" = N 11° 35' 54.96" 4 PM  
 - 50.52"  
 N 11° 33' 58.44" + 1' 49" = N 11° 35' 47.44" 5 PM

4 AM.  
 Noon.  
 1 PM  
 12 PM  
 3 PM  
 4 PM  
 5 PM

August 25th 1911.

N 11° 04' 8.4"  
 - 3' 25.68"  
 N 11° 0' 42.72" + 1' 06" = N 11° 0' 48.72" 8 AM  
 - 57.42"  
 N 10° 57' 51.30" + 0' 48" = 11° 00' 39.30" 9 AM  
 - 57.42"  
 N 10° 58' 59.88" + 0' 38" = 10° 59' 37.88" 10 AM  
 - 57.42"  
 N 10° 58' 8.46" + 0' 34" = 10° 58' 42.46" 11 AM  
 - 57.42"  
 N 10° 57' 17.04" + 0' 34" = 10° 57' 57.04" Noon  
 - 57.42"  
 N 10° 56' 15.62" + 0' 34" = 10° 56' 49.62" 1 PM  
 - 57.42"  
 N 10° 55' 24.20" + 0' 38" = 10° 56' 2.20" 2 PM  
 - 57.42"  
 N 10° 54' 32.58" + 0' 48" = 10° 55' 20.58" 3 PM  
 - 57.42"  
 N 10° 53' 41.16" + 1' 06" = 10° 54' 47.16" 4 PM  
 - 57.42"  
 N 10° 52' 49.74" + 1' 49" = 10° 54' 38.74" 5 PM

4 AM  
 8 AM  
 9 AM  
 10 AM  
 11 AM  
 Noon  
 1 PM  
 2 PM  
 3 PM  
 4 PM  
 5 PM

August 24th 1911.

N 11° 24' 37.2"  
 - 3' 23.92" (4 hrs diff)  
 N 11° 21' 13.28" + 1' 06" = N 11° 22' 19.28" 8 AM  
 - 50.98"  
 N 11° 20' 22.30" + 0' 48" = N 11° 21' 10.30" 9 AM  
 - 50.98"  
 N 11° 19' 31.32" + 0' 38" = N 11° 20' 9.32" 10 AM  
 - 50.98"  
 N 11° 18' 40.34" + 0' 34" = N 11° 19' 14.34" 11 AM  
 - 50.98"  
 N 11° 17' 49.36" + 0' 34" = N 11° 18' 23.36" Noon  
 - 50.98"  
 N 11° 16' 58.38" + 0' 34" = N 11° 17' 32.38" 1 PM  
 - 50.98"  
 N 11° 16' 7.40" + 0' 38" = N 11° 16' 45.40" 2 PM  
 - 50.98"  
 N 11° 15' 16.42" + 0' 48" = N 11° 16' 4.42" 3 PM  
 - 50.98"  
 N 11° 14' 25.44" + 1' 06" = N 11° 15' 31.44" 4 PM  
 - 50.98"  
 N 11° 13' 34.46" + 1' 49" = N 11° 15' 23.46" 5 PM

4 AM  
 8 AM  
 9 AM  
 10 AM  
 11 AM  
 Noon  
 1 PM  
 2 PM  
 3 PM  
 4 PM  
 5 PM

72

75

99955

2.17

699685  
99955

199910

216902.35

20368

13222

12936

4923

852

445

407

pin 7500'

pin 28002'

X  
2.17

7659 2 1/2  
2.17

67613

9659

19318

2096003

187992

276083

187992

280910

426

46998

9500 78.0000 60821

76000

20000

19000

1000

950

95 78.0000 1.82

760

775

576

61.

