

Field Book # 39

DOUGLAS COUNTY

1914

FB 39

№ 13

INDEX BOOK

1898

39

DISTANCES FROM SIDE STAKES FOR CROSS-SECTIONING.

-SLOPE 1 1/2 TO 1. ROADWAY OF ANY WIDTH.

0	.1	.2	.3	.4	.5	.6	.7	.8	.9
0	0.00	0.16	0.30	0.45	0.60	0.75	0.90	1.05	1.20
1	1.50	1.65	1.80	1.95	2.10	2.25	2.40	2.55	2.70
2	3.00	3.15	3.30	3.45	3.60	3.75	3.90	4.05	4.20
3	4.50	4.65	4.80	4.95	5.10	5.25	5.40	5.55	5.70
4	6.00	6.15	6.30	6.45	6.60	6.75	6.90	7.05	7.20
5	7.50	7.65	7.80	7.95	8.10	8.25	8.40	8.55	8.70
6	9.00	9.15	9.30	9.45	9.60	9.75	9.90	10.05	10.20
7	10.50	10.65	10.80	10.95	11.10	11.25	11.40	11.55	11.70
8	12.00	12.15	12.30	12.45	12.60	12.75	12.90	13.05	13.20
9	13.50	13.65	13.80	13.95	14.10	14.25	14.40	14.55	14.70
10	15.00	15.15	15.30	15.45	15.60	15.75	15.90	16.05	16.20
11	16.50	16.65	16.80	16.95	17.10	17.25	17.40	17.55	17.70
12	18.00	18.15	18.30	18.45	18.60	18.75	18.90	19.05	19.20
13	19.50	19.65	19.80	19.95	20.10	20.25	20.40	20.55	20.70
14	21.00	21.15	21.30	21.45	21.60	21.75	21.90	22.05	22.20
15	22.50	22.65	22.80	22.95	23.10	23.25	23.40	23.55	23.70
16	24.00	24.15	24.30	24.45	24.60	24.75	24.90	25.05	25.20
17	25.50	25.65	25.80	25.95	26.10	26.25	26.40	26.55	26.70
18	27.00	27.15	27.30	27.45	27.60	27.75	27.90	28.05	28.20
19	28.50	28.65	28.80	28.95	29.10	29.25	29.40	29.55	29.70
20	30.00	30.15	30.30	30.45	30.60	30.75	30.90	31.05	31.20
21	31.50	31.65	31.80	31.95	32.10	32.25	32.40	32.55	32.70
22	33.00	33.15	33.30	33.45	33.60	33.75	33.90	34.05	34.20
23	34.50	34.65	34.80	34.95	35.10	35.25	35.40	35.55	35.70
24	36.00	36.15	36.30	36.45	36.60	36.75	36.90	37.05	37.20
25	37.50	37.65	37.80	37.95	38.10	38.25	38.40	38.55	38.70
26	39.00	39.15	39.30	39.45	39.60	39.75	39.90	40.05	40.20
27	40.50	40.65	40.80	40.95	41.10	41.25	41.40	41.55	41.70
28	42.00	42.15	42.30	42.45	42.60	42.75	42.90	43.05	43.20
29	43.50	43.65	43.80	43.95	44.10	44.25	44.40	44.55	44.70
30	45.00	45.15	45.30	45.45	45.60	45.75	45.90	46.05	46.20
31	46.50	46.65	46.80	46.95	47.10	47.25	47.40	47.55	47.70
32	48.00	48.15	48.30	48.45	48.60	48.75	48.90	49.05	49.20
33	49.50	49.65	49.80	49.95	50.10	50.25	50.40	50.55	50.70
34	51.00	51.15	51.30	51.45	51.60	51.75	51.90	52.05	52.20
35	52.50	52.65	52.80	52.95	53.10	53.25	53.40	53.55	53.70
36	54.00	54.15	54.30	54.45	54.60	54.75	54.90	55.05	55.20
37	55.50	55.65	55.80	55.95	56.10	56.25	56.40	56.55	56.70
38	57.00	57.15	57.30	57.45	57.60	57.75	57.90	58.05	58.20
39	58.50	58.65	58.80	58.95	59.10	59.25	59.40	59.55	59.70
40	60.00	60.15	60.30	60.45	60.60	60.75	60.90	61.05	61.20
41	61.50	61.65	61.80	61.95	62.10	62.25	62.40	62.55	62.70
42	63.00	63.15	63.30	63.45	63.60	63.75	63.90	64.05	64.20
43	64.50	64.65	64.80	64.95	65.10	65.25	65.40	65.55	65.70
44	66.00	66.15	66.30	66.45	66.60	66.75	66.90	67.05	67.20
45	67.50	67.65	67.80	67.95	68.10	68.25	68.40	68.55	68.70
46	69.00	69.15	69.30	69.45	69.60	69.75	69.90	70.05	70.20
47	70.50	70.65	70.80	70.95	71.10	71.25	71.40	71.55	71.70
48	72.00	72.15	72.30	72.45	72.60	72.75	72.90	73.05	73.20
49	73.50	73.65	73.80	73.95	74.10	74.25	74.40	74.55	74.70
50	75.00	75.15	75.30	75.45	75.60	75.75	75.90	76.05	76.20

Computed by L. Leland Locke.

352 South Main  
Bunkerhof, Phone 398

26.00  
22.54  
80.30 / 9000 6011  
8030  
9700  
8030  
66010  
(2971  
39 / 15.20  
119  
330  
273  
3900 / 15000 0.63846  
112000.63846  
33000  
33000  
19230 10 31200  
2682000 180000  
9.615000 156000  
270000  
28400  
4600  
1300  
003546  
15  
19230.003646  
3546  
579690003461400  
11538  
174999760  
11.538000  
307  
003546  
11.538000  
90114  
006  
640  
00003  
250

60

$42.1x - 69.60$   
 $\frac{6}{48} : x = 69.60 \div 48 = 1.45$   
 $\frac{60}{276} \frac{48}{120}$   
 $\frac{276}{120}$

$30 \quad 38 \quad 69.60 = 27.1x$   
 $\frac{60}{276} \frac{48}{120}$   
 $\frac{276}{120}$

$50.1x = 69.60$   
 $\frac{60}{276} \frac{48}{120}$   
 $\frac{276}{120}$

$35.00 - 13.12 = 21.88$   
 $30.00 - 11.12 = 18.88$   
 $25.00 - 9.12 = 15.88$   
 $20.00 - 7.12 = 12.88$   
 $15.00 - 5.12 = 9.88$   
 $10.00 - 3.12 = 6.88$   
 $5.00 - 1.12 = 3.88$

$25.42$   
 $29.98$   
 $30.36$   
 $28.78$   
 $28.78$   
 $27.94$   
 $203.30916$

Full cell 43° is on South of T295.  
 $2 \frac{1}{2} \text{ hrs} = 1 \text{ of arc } \times \text{ minute}$

$60.000 / 20.000 = 3.0$   
 $18.168$   
 $18.320$   
 $18.168$   
 $18.320$

$40.19 / 12.00 = 3.349$   
 $10.33$   
 $5.7150$   
 $5.7150$   
 $6.32200$

$19.20$   
 $10.33$   
 $5.7150$   
 $5.7150$   
 $6.32200$

$25.42$   
 $29.98$   
 $30.36$   
 $28.78$   
 $28.78$   
 $27.94$   
 $203.30916$

0001/

" 34775 Prescription No at  
Fullerton Drug Store "Ointment"

112

# Index of Book 13.

Name	Sec or Cl	Twp	Cor	Established	Date	Page
Buxton W <sup>22</sup>	8-16-9-17				April 4/14	16
X ✓ Hancock	Cl # 45	22-7			Feb 5/13	4-14
X ✓ Hall Robt.	22-23-26-27				April 22/14	30-33
3 ✓ Hunt C.I.	Sec. 1	24-4			May 4/14	34-38
Henning David	9-10-15-16	27-5			July 6/14	45
Hedrick E.H.		21			June 5/14	43-44
Hall Lucius		25-6			Nov 5/14	49
Landers Henry	9-10	28-6			Jan 19/15	54-59
" L.F.	"	"			" 3/15	60-68
X Montgomery R.B.	Sec. 24				Feb 1/15	69
✓ Thomas G						17
Goldabini	29-30-31-32	21-4			April 8/14	<del>26</del>
X Seely & Taylor	13-14	22-7			July 16/14	47-48
Cozard						
X Seeley					July 18/14	51-53
Smick W.A.	15-16-21-22	27-5			May 9/14	40
Sullivan J.D.	Cl 48	30-14			May 13/14	41-42
X Wise J.D.	Cl 49	33-5			April 17/14	25-28

0003 3

3

Revised by 257  
Brook 2 Feb 5<sup>th</sup> 1913

Edwin Karle Hancock

Survey for Edw Hancock  
T. 22 S. R. 7. W.

Begin at S.E. Cor. D.L.G. 45  
North on random, set stakes every 500 ft.  
4344' set in road and measure

creek by stadia vert angle 1'45"  
intersect road 217 = 269.7' + 4344' =

46110.7 set temp stake and search for cor  
No trace of set.

At S.E. L. cor. find fir standing  
Offset N 10° W from fir brig tree 240' 6"  
west on random line.  
2178 set temp stake  
Set back 51° E

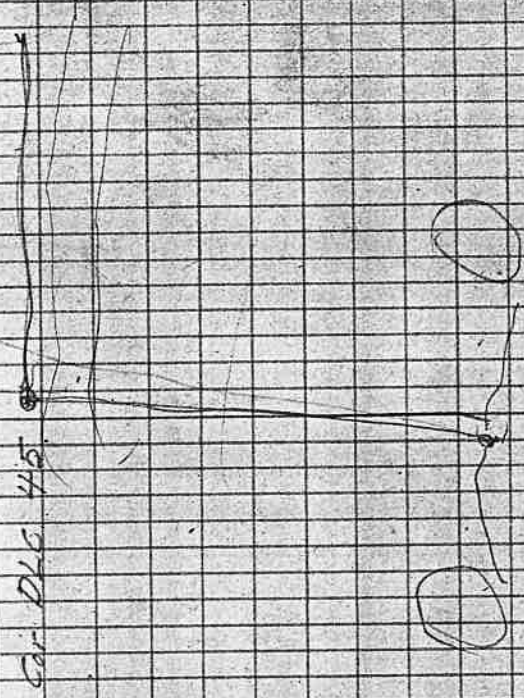
Line Non E. Bdry  
46110.7 intersects E & W line at 22454  
Set cor. to correspond to both true  
distances.

Line Non E. bdry 45469 intersects cor 76 to left  
Set cor and mark  
A A. fir 24" N 80° W 6'  
An Oak 12" S 66° E 3'  
Cor D.L.G. 45 interior.  
on S and E bndry

This is a rotten fir stake which Ed says is in place set from field notes.

4610.7  
12.6  
4484.1

Cor D.L.G. 45



Calculate angular error of approx 1°

Feb 6th 1913

Continue for Edw Hancock.

At S.W cor P.L.G. 45. T22 R9.

Find rock said to be set by Germond. which

checks well with fir being tree.

Northon west line.

Offset East 25' thence Northon Offset setting a stake every 500'

31174 set back 25' West on line

40+55 set stake for temp cor at division line

47+80 intersect N line of claim 31'E of cor.

check stake set by Germond and find it OK

Mark

A fir 12" S 72° 30' E 16'

" " 12" N 56° E 10'

Feb 20th 1914

102.20

679.98

6133.8

6747.8

6780

39

40+55

6747.2'

PM Feb 7<sup>th</sup> 1914

Continue for Hancock  
Return to S.W. cor. Ch. 45  
East

set 25' East of cor. Offset 400' N  
39 77 + 25 = 346.2

East 344.2 intersect line North of  
S.E. Cor 396'

52 ch  
66  
31  
312  
343  
02  
30

At S.E. L. cor. Chain 45  
N 0° 40' W

21431 to rock set for N.E. cor. Ch. 45

set corners for division

North on each (E & W) line

61.59 chs North of south line

61.59 chs = 40.65 feet.

line on E side corrects 67'E

" " " " 19'W

set corner for division on West

line 61.59 chains in a Northerly

direction from S.W. cor. Ch. 45  
and mark

A. Fir 24" S 89° E 48'

" " 24" N 61° E 32'

A.M. Feb 8, 1914

67.37  
11.27  
56.10

64.29  
3.50  
101

2198  
66  
2132



8 Section line W. between secs 20 & 29  
continue for Hancock

Begin at cor of secs 20, 24, 28, & 29'  
Run West on random  
267.27 intersect 1/4 line 14' south of  
Feb 10<sup>th</sup> PM correct this line  
corner

Began at N.W. Cor. Davis Claim find  
bearing tree, Set cor.

North on random on East line of  
Jos Levin claim

11+10 ' ' ' Intersect random line which  
is 14' south and 361' East of 1/4 cor  
between secs 20 & 29.

30+00 fence 53' East  
43+46 Intersect South line of claim 39  
81' W. of interior corner on W boundary

Corrections

11+22	1122 x 0.1866 =	20.9'
15+00	1500 x "	= 28.1'
20+00	2000 x "	= 37.1'
25+00	2500 x "	= 47.1'
30+00	3000 x "	= 56.1'
35+00	3500 x "	= 65.1'
40+00	4000 x "	= 74.1'

Feb 9<sup>th</sup> 1914

96.00 ch 2637/14.900  
30.4  
65.60  
66  
393.6  
392.6  
4329.6

14.900  
1.866  
5.150  
29.150  
23.900  
237.33

No Work Feb 10<sup>th</sup> 1914, A.M. Rain  
No Work P.M.

81.1 + 34.0 = 0.1866

10.5309  
10.620  
26.85  
2276  
3.61

.00531  
3.00  
24.500  
10.620  
2226  
2226  
6928  
11388  
12,075.56

.00531  
9.00  
1.779  
2.665  
5.434

Rain  
Feb 10<sup>th</sup> 1914

Continue for Harpoch  
Find blazed tree and do not chop out  
as break stump corresponds to  
the other tree. Set corner thence

West 361' to random line North  
from 1/4 sec cor between  
sections 20 & 29 = 2216  
4346 - (1110 + 14) = 2216

Set temp stake for sta 22 + 16  
North still on random 1/4 line

77-06.5' cross wire fence  
77-44' set stake for temp corner  
204.85' intersect decl line between secs  
17 & 20 1' to East of 1/4 sec corner

West from random line E' West of N.E. corner  
sight through West Miss S.E. corner  
of John Scott stave 45' south

$$\begin{array}{r} 560 \\ 73 \overline{) 444} \\ \underline{210} \\ 234 \\ \underline{210} \\ 24 \end{array}$$

Feb 11<sup>th</sup> 1914

$$\begin{array}{r} 2085 \\ 53 \overline{) 1055} \\ \underline{106} \\ 55 \\ \underline{53} \\ 25 \end{array}$$

$$\begin{array}{r} 2085 \\ 53 \overline{) 1055} \\ \underline{106} \\ 55 \\ \underline{53} \\ 25 \end{array}$$

$$\begin{array}{r} 2085 \\ 53 \overline{) 1055} \\ \underline{106} \\ 55 \\ \underline{53} \\ 25 \end{array}$$

Continue for Hancock

Begin at corner of secs 16, 17, 20 & 21

South on random line between secs 20 & 21

2+10' Offset 4' West

12+88 set 4' East on true line of stake

set for corner by Germond

13+20 set stake for temp corner

To locate 1/4 sec corner between sections 19 & 20

Begin at post on line between 18 & 19

230' West of section corner.

South 230' set stake and log

East 230' set temporary stake and

search for bearing trees.

Find fir stump rotten. Chopout

pith seam and find marks.

set stake on line between

sections 19 & 20

and mark

A fir 24" N 68° E 15' dist

" " 20" N 40° W 17' dist

Thence south random between 19 & 20

continue next page

Fog & Rain

Feb 11th 1914

10

Feb 12th Rain

111

Feb 19, 1914 Rain

Find large fir-stumps to correspond to bearing trees for bearing and distance.

Set post for 1/4 corner

23 + 21 intersects gr line 11' to west of gr post.

Set an oak post for cor and

Mark

A fir 20" N 90° 0' E 87'

" " 40" N 67° W 79'

Continue for Hancock

Check chaining from section corner  
of sections 16, 17, 20 & 21,  
south

13+20

check previous stake at 1/4 corner  
26+40 set temporary stake for 1/4 corner  
between secs 20 & 21

53+10 Intersect sec' line between secs.

21 & 28 15' East of corner

to secs 20, 21, 28 & 29

Returns 1/4 corner and set

A flag 8" x 12" x 30" on end

at 26+55 and 75' West of random

line for 1/4 corner between secs 20 & 21

00 12

726 144.19 K

$$\begin{array}{r} 4) 5310 \\ \underline{4} \phantom{0} \\ 13 \phantom{0} \\ \underline{12} \phantom{0} \\ 10 \phantom{0} \\ \underline{8} \phantom{0} \\ 20 \phantom{0} \\ \underline{20} \phantom{0} \\ 0 \phantom{0} \end{array}$$

$$\begin{array}{r} 13 \phantom{0} \\ \underline{12} \phantom{0} \\ 10 \phantom{0} \\ \underline{8} \phantom{0} \\ 20 \phantom{0} \\ \underline{20} \phantom{0} \\ 0 \phantom{0} \end{array}$$

$$\begin{array}{r} 2) 5310 \\ \underline{4} \phantom{0} \\ 13 \phantom{0} \\ \underline{12} \phantom{0} \\ 10 \phantom{0} \\ \underline{8} \phantom{0} \\ 20 \phantom{0} \\ \underline{20} \phantom{0} \\ 0 \phantom{0} \end{array}$$

$$\begin{array}{r} 10 \phantom{0} \\ \underline{8} \phantom{0} \\ 20 \phantom{0} \\ \underline{20} \phantom{0} \\ 0 \phantom{0} \end{array}$$

$$264 \frac{1}{2}$$

$$2 \frac{15}{75}$$

Feb 14th 1914

50  
4 1/2

D.L.C correct 4.5' North

Continue for Hancock  
 To set 1/4 sec corner in centre  
 of section 20. T 22 R 7.  
 Set transite on Prairie at pt due  
 East of 1/4 sec' cor' bet' secs 19 & 20  
 extend line east and intersect section  
 line bet' secs 20 & 21, 20 feet North  
 of 1/4 section corner.

Corner made by intersection of  
 1/4 line through sec' 20, with North line  
 of claim 39.

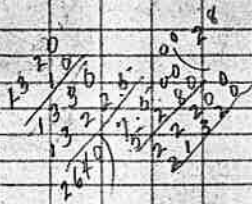
Set on random line 442' West of  
 interior corner of claim 39. set Post  
 for corner 4.5' North.

Thence for setting 1/4 corner in sec' 20.  
 Set on true 1/4 line 32.16' North of  
 1/4 corner between secs 20 & 29 ran  
 south 560' to 1/4 sec corner set  
 in section 20 set by intersecting  
 1/4 lines E & W. and N. 85.

Set Oak Post for 1/4 corner and  
 Mark

An Oak	8" dia	S 20 1/2° E	44'
"	5"	S 56 1/2° W	22'
"	5"	N 89° W	38'

Feb 15th 1914

Feb 10<sup>th</sup> 1914

continue for Hancock  
To set  $\frac{1}{16}$  cor a quarter mile south of 14 cor  
bet sees 17 & 20

Take 1/2 distance between gr posts, which  
is 1322.5' south of 14 Post on line of 17 & 20  
Mark

A fir 12" N 46° 30' W 18'  
" " 22" N 3° 30' W 38'

S 89° 50' E intersect sec line bet 20 & 21  
2 1/2 to left of 1/16 cor

set 1/2 corner 1327.5 south on true  
line between sees 20 & 21.

And mark  
A fir 20" S 45° W 4 inches  
" " 26" S 13° E 20 feet

001

5

15

Survey for W<sup>2</sup> Buxton.

Begin at cor of sec 8, 9, 16 & 17.

check up and find trees in place.

offset 3' South.

W<sup>2</sup> on random line

20+00 offset 15' North

26+43 intersect 1/4 line 21' South  
of corner. (Trees in place)

Return to station 13+21.5 and set stake  
for 1/4 cor' 14' North of random line

Setup at corner and set traverse  
on a spirit indicated by Vanderwey where  
he has brushed out line on hill and  
line is stakes to that point

Roseburg April 4, 1914

Chain of C. W. Buxton

C. H. Vanderwey



Chains

Continue for S.S. Thomas

Begin at corner of sec 30 & 31 on Twp line  
check corner set by Thiel and find it  
in place.

Cedar still green portions of fir and  
Maple in place.

Scout to from cedar tree as offset to avoid crossing  
Pass Creek

15.64 Set N 36° W 60' on random line  
20.00 set stake for temp<sup>th</sup> cor

46.36 Intersect of corner & 1/4 Sec E of corner  
set by Thiel check up and find  
fir stub N. 19° E. 80 Ms. also  
remains of hardwood stub to correspond  
to Oak 6" N 8° W 55 Ms.  
Take this as good

Fast 'through' 3 1/2' in  
80.00 Search for corner and find no  
evidence of original corner but find  
bearing trees made by Briggs about 11

years ago. Galabini says Briggs made  
this corner without looking for original

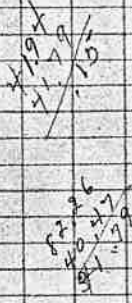
81.26 After fixing corner continue this line  
82.26 intersect section line 20 Ms south

Set night leave unbrushed

17

April 11th, 1914

Chain for S.S. Thomas  
from Galabini



17

0018  
18

April 13th 1914

Continue for Thomas & Galabin

Begin at corner of secs. 29, 30, 31 & 32

Offset 100 lks West thence South on Random

40.60 set E 100 lks set temp cor and look for some 1/2 corner as we looked for Sat night No evidence satisfactory so run on South

Setting temp line stakes every 500 chains

80.52 Intersect Temp line 8 lks West of sec corner

check corner trees in place two down. corner is set correct Return and correct stakes

set 7/16 corner at 60.39 chains 6 lks East of random line and mark

A Fir 8" in dia N. 35 1/2° E 58 lks

" " " " N. 71° W 28 "

Return and set 9/8 corner at 40.26 chains and 4 lks East of random line

Search for signs of Original corner find hole where a stump had burned 5 15° E 5 - lks

Take point run in as best I can determine. Set cedar post

A Fir 10 in dia S 29 1/2° E 101 lks

Hemlock 7 5 71° N 91

(R)

and mark

A Cedar 2 1/4 in dia N 19 1/4° E 140 lks

Continue for Thomas & Goldakini  
 Return to the car 20 chains South  
 of 1/4 corner between sirs 30 @ 31  
 Contact lines setting fu cor at  
 20.25 chs. and 90' 1/2. West of random  
 line and Mark.

A. Fir 8 in dia N 72 1/2° W 19 1/2 Ms  
 " " 8 " N 82° E 34 "

Return and set pt. in corner in Sec 31.  
 19 1/2 Ms West of random North & South  
 through section, and 14 1/2 Ms North of  
 random East & West and Mark

A fir 40 in dia N 32° E 3 Ms  
 " Cedar 4 in dia N 71 1/2° W 31 Ms  
 " fir 36 " " 530° N 38 "  
 " " 4 " " 559 1/2° E 38 "

April 14th 1914

047  
 976.00  
 047  
 24.00  
 398.00  
 94  
 1175.00

80621250001047  
 3 1992  
 56600  
 56581

April 14th

10.02  
 10.40  
 10.40  
 10.40  
 10.40

10.40  
 10.40  
 10.40  
 10.40  
 10.40

10.40  
 10.40  
 10.40  
 10.40

10.40  
 10.40  
 10.40  
 10.40

10.40  
 10.40  
 10.40  
 10.40

10.40  
 10.40  
 10.40  
 10.40



Return and correct  $\frac{1}{4}$  cor on North line  
of section 91, correct 2.15  $\frac{1}{4}$  West and  
1.5  $\frac{1}{4}$  South thence,

$S 0^{\circ} 16' E$

To beginning Otsego log tie, West

20.15 Intersect  $\frac{1}{4}$  corner set by Thiel

0029  
 Mar 21 56'E  
 270 40 E 54' 44" 1/4 210' 0  
 April 15, 1914 Rain

40.28  
 $\frac{1}{2}$

20.16  
 $\frac{1}{2}$

20.17  
 $\frac{1}{2}$

20.00  
 $\frac{1}{2}$

20.19  
 $\frac{1}{2}$

PM Fair April 15, 1914

Thomas G. Galbabin

Begin at corner of secs 30, 30, 31 & 32  
 North on random.  
 20.00 set temp stake  
 40.08 Fall 45 lks West of gr coks  
 find stump and BF of tree N85°E  
 Mark



A Cedar 8" in dia N 62 1/2° W 77 lks  
 " " 40 " " N 81 1/2° E 102 "

Return and set 1/4th corner at 3004  
 and 22 1/2 lks East of random.

and Mark  
 A fir 10 in dia N 23 1/2° E 30 lks.  
 " " 9 " " 5 8 1/2° E 9 lks  
 thence

West on random.  
 40.00 set temp corner

Begin at 1/4 corner between secs 30 & 31  
 Run North.  
 19.90 intersect 1/4th line run from east  
 at 40.71

Set stake on line North from 1/4  
 between sections 30 & 31 20.00  
 North of corner. This as temporary corner  
 only.  
 Doce Galbabin  
 D. S. Johnson

Cloudy April 16, 1914

788

24.0.07

April 16

Begin at 9<sup>th</sup> corner on East of Sec

31, Measure back Western window  
previously run

to 4<sup>th</sup> intersect 1/4 corner in sec. 31

Return and correct 1/4 corner of

20.21 and 21/115 North of random

run from West to East through section

set Cedar stake and mark

A fir 50 in dia N 23° E 8.5 145

" " 12 " " S 50° W 88 "

20 21°36' E

R. J. W.

Survey for S.W. Wise, and change

for county road

Set S.E. Corner of Jeffery's D.L.C No. 39

Find a B. Oak N 29° E 90.165'

stump of other tree in place.

Find rock for S.W. corner of

Ambrose claim, 1/4 line trees called for

also stump of bearing tree

thence

North on random

14.92 intersect Q of Pacific Highway

33.00 is 30 ft Area East fence

60.00 Offset 30 1/2s East

correct 30 1/2s to west then measure East to corner

78.313 Intersect stake set as corner

in centre of road to 1/4s to left

East 32.82 Miss corner by 10"

N 88° E 28.64 Plug corner, trees in place

South on East line of cl. 39.

Offset 20 1/2s East

20.16 Intersect Porters corner 40 1/2s to East

34.00 set back 20 1/2s West.

79.60 Intersect corner 68 1/2s to East

No bearing trees existing so I take

line fence North and Centre of road

as corner.

66 1/15

44

April 17<sup>th</sup> 1944

Chain (S.W. Wise)  
B. Huntington

Field notes give S 72° W

S 51° 00' W

3.85 Obs S 50° 50' W of

Rock set for corner

of Pacific Highway

Correct (from 21°36' E to 21°46' var)  
dec. and. of this part to



T23, S R 5 W

Description for county Road

Beginning at a point 14.79 ch.s North and 18 Ms West set Post 6x8x20 in buried on end marked X, flush with top of ground

A fir 12 in dia N26°E 110 Ms Thence N 09 39' E

5.95 chains to angle in middle of old road. Set post 12x10x9 in marked X for end of line.

Beginning at a point which is a rock 6x8x10 in and 51 feet from which the SW corner of

The A. S. Ambrose D.L.C. No 41, T 23 S 14 R 5 W, Bears West 26 Ms and 8 South West

54.61 chains distant set around from

thence N 09 29' E 5.95 chains to

a rock 9x10x12 inches set at angle in county road.

Post 12x10x9 set on stake with 2 inches below surface

14.79 - 18 Ms = 14.61  
= 23 Ms + correction 4 Ms = 26 Ms.

12 in dia  
of old road

5.95 chains  
12x10x9 in  
marked X for

marked a fir tree 12 in dia N26°E 110 Ms.  
14.61 26



6c  
30

6c

Survey for Robert Hall Oakland  
 Begin at corner of secs 22, 23, 26 & 27  
 all trees standing set cor, thence  
 North between secs 22 & 23. on random,  
 18.63 set 51 1/2 West on line of  
 an old tree marked for live tree  
 20.00 set temp stake 54 1/2 West  
 for temp 1/2 corner as Smith and  
 Hall do not want to run on to 1/4 corner  
 West on random  
 40.00 set temp stake

Clear  
 Dir. 21° 30' E  
 April 22, 1914  
 Chain ( J.L. Mohr  
 A.V. Abeen.

T 25 S R 4 W.

120  
 110

Robert Hall & Joseph

April 24, 1914

13.60  
3.9  
13.92

Cantone for Hall

Begin at N.W. interior corner  
 of N. Markham Ch. 39. Find cedar tree  
 set corner N 55° W 88 1/2 Ms. fir gouie  
 Thence West on South boundary  
 33.28 set temp stake  
 33.68 intersect corner (after setting) 28 1/2 Ms South  
 of corner

(set S.W. L corner of claim 39 both trees  
 visible one stump tree cut other tree green)

Thence South on random  
 6.40 set temp stake  
 6.43 intersect corner (after setting) 6 Ms East  
 Find marks on stump of tree S 78° W  
 set temp cor and find bottom of other  
 stump Set corner accordingly 5855  
 and mark

} NW L Cor.  
 109

(P)

A.W. Oak 4 in S 81 1/2° W 27 Ms.  
 " " 4 " N 64° E 32 "

Thence South  
 13.96 intersect corner to secs 15, 16, 21, 22  
 5 1/2 Ms East of corner  
 set corner from Original mark visible

45.66  
4.0  
49.66

and mark  
A. W. Oak 4 in  $54.5^{\circ}E$  60 lks.  
" " 4 "  $53.1^{\circ}W$  59 "  
" B " 6 "  $N 36^{\circ}W$  128 "  
" " 6 "  $N 62\frac{1}{2}^{\circ}E$  180 "

Begin at NW interior corner of Markham

claim 39. Thence

South on random.

48.86 set temp. stake

49.26 intersect Cl line 74 lks East of  
corner, after setting

(SE) ? JMC

Begin at S.W. corner on South boundary of  
claim 39. find trees in place set cor,  
Thence west

25.00 set temp corner and search for trees  
Find Oak stump and blaze evident  
but badly rotted set corner from  
Oak stump and Mark.

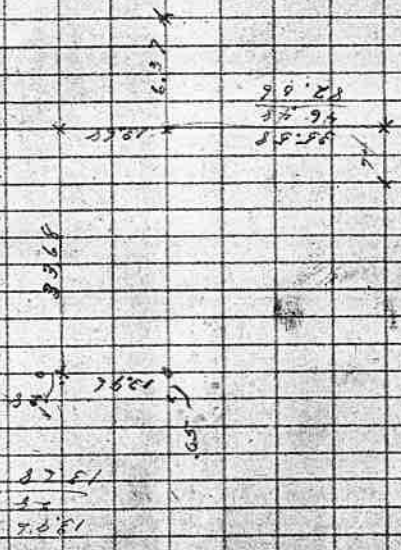
A. Fir 30 in  $5.4^{\circ}E$  194 lks  
" " 24 "  $N 55\frac{1}{2}^{\circ}W$  282 "  
intersect 15 lks south of cor  
Hence:  $N. 89^{\circ} 40'E$  on true line

25.21

1032  
1132

April 24 1914

(R)



44.3  
24  
6.69  
30  
6.99

49.26  
13.60  
35.66  
75.48  
81.14

49.26  
13.64  
35.58

24 5.89  
1.23

(R)

48.18

Continue for R. Hall & H. Smith

Find qr corner on South of 22.

Oak gone fir stump in place, marks

visible - set post and mark.

A fir 12 in N 23° W 6 1/2

" 18 " S 14° E 3.1 "



Thence North on random.

18.91 intersect the random previously

run from East at 37.80 1/2 from statu

set for East line of section

46.49 intersect E.L.S. line 443 chs East

of corner

81.90 intersect point on creek 53 1/2 to

West of point that looks like corner

40.00  
2.20  
37.80

40.00  
2.20  
37.80

Survey for C. J. Hunt, Coe Manning &  
Verner Abeene.

Begin at gr post on North of Sec. 4  
T. 24 R. 4. Oak faces wrong. Fine  
gone. Hunt says this corner found  
by Roberts, by running from T.W.P.  
and Range corner 1/2 mile East.

Set stake N. 58° E. 37 1/2 Ms.

Thence West on random TWP line.

Find One tree Marked S. 1, 2, 5, E. 4 W.  
Set stake N. 37° W. 158 Ms, then look  
for remains of other three trees.

Find Oak down in westerly direction  
badly rotted but old blazes plain on  
rotten chunk, but no marks.

Find Ash chop out but find inside  
eaten & aunts. yet evidence of both  
blazes. No two trees corresponds for  
direction or distance.

Take measurements from each tree to  
correspond to calls in notes. take a men  
and find all about 15' short.

Set stake and note the original tree.

0034 32

May 4th 1914

Chair Verner Abeene  
C. J. Hunt

1914

Robert P. Hunt

Book

1983  
3991

100  
P3

67

67

continue for Abeene Hunt & Liles

Oak 12' in S 37° E 181 Hs

Mark new trees.

W.O. 6 in S 42° W 23 Hs

" 9 " N 54° W 28 "

" 9 " N 30° E 96 "

Do not tie in line run from gr corner.

West on random on North of sec 2.

8.00 Offset 30 Hs south - Racks

10.59 " 30 " North

40.00 Set temp stake quit Night

60.50 intersect line S of stream

79.83 Intersect sec corner set by

Thiel

Check up corner from three trees.

bearings all good but one distance

only will check. Hill very steep. So I take

the distance nearest level as best and

leave stake as satisfactory.

Return and after clipping out every

possible tree decide that original trees

are gone.

Set oak post at 39.915 chains

and marks

A Cedar 14 in S 68 1/2° W 57 Hs

" Fir 18 " N 58° W 67 "

(R)

(R)

May 5th, 1914





May 8, 1914. Shavers,

Continue for Hunt, Manning & Alvord.  
Set in corner north of 1/4 cor between  
2 & 11, at 61.61 obs. from North  
sec line, and 32 1/2 East of random  
line.

A W O 14 in N 30° E 128 "  
" " 10 " N 74 1/2° W 59 "

Set 9th sec corner in sec 2.  
at 39.60 obs. from North line  
and 20 1/2 East of random line  
South through sec.

And mark.  
An Ash 10 in N 57° W 719 1/2  
" Maple 36 " S 21° 30' E 576 "

Center  
+ 24  
25

Finish at N. on Roseburg R.M. Train

39 39

39

Survey for W.A. Sarrick  
T. 27 S. R. 5 W.

Begin at the corner of Secs, 16-16-21-22,  
Thence following the fence in a Northerly  
direction supposedly on line between Secs  
15 & 16.

- North
- 17.00 Offset 15.185 West
- 23.00 Sat night
- 25.08  $\Delta$  24.09 115° 20' L 564° 46' W
- 3.17  $\Delta$  13.09 13° 17' R 578° 03' W
- 6.42  $\Delta$  23.54 54° 15' L 554° 19' W
- 3.85  $\Delta$  54.52 54° 32' E 500° 32' E
- 6.00
- 19.22  $\Delta$  57.25 887° 57' E
- 12.13 92° 09' L to first line

Corrected

- | S/A | Dist      | B          | Dist          |
|-----|-----------|------------|---------------|
| 1   | 00° 00'   | North      | 25.08         |
| 2   | 10° 20' L | 564° 46' W | 3.17          |
| 3   | 13° 23' R | 578° 03' W | 6.42          |
| 4   | 23° 50' L | 554° 13' W | 3.85          |
| 5   | 54° 45' L | 500° 32' E | 19.71         |
| 6   | 87° 25' L | 587° 57' E | 12.10         |
| 1   | 92° 03' L | North      | to first line |

74  
49  
23  
47  
106  
53

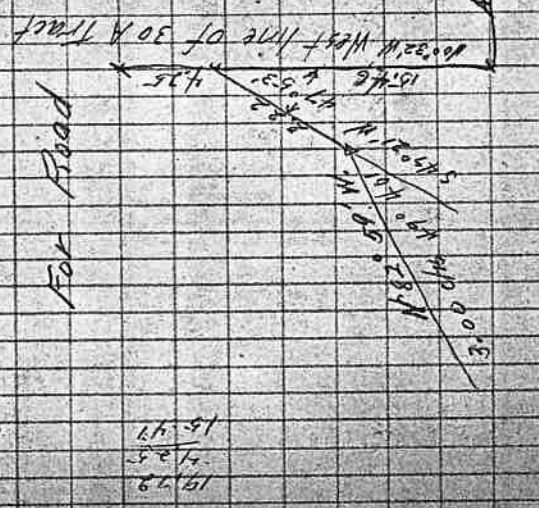
Chair W.A. Sarrick

208.12  
5.4  
126.24  
19.81

189  
76  
104  
172.60  
64.17  
545.43  
2.44  
1.7  
18.5  
6.4

Monday

Intersection of two roads  
to fence  
To back line which is fence  
To point of beginning



For Road

600  
176  
426

19.71  
15.46  
4.25

12.10  
S 87° 57' W  
Sec Cor

Survey for J.D. Sullivan, J. Sutton

Begin at S.E. Corner of Andrew

Thomas, D.L.C. No 48. T30S R.4 W

find post marked for corner also

rock set do not check up for bearing

trees but accept stake as good.

then ran North with fence on

random

1

13.91 to point in Co road.

18.86 Falls 14 1/2 west of rock

set for Worley corner.

Sta 2 554° 05' W 7.09

3 560° 20' W 17.18

4 524° 55' E 1.52 to 5-

at of leave tract and Begin at

N.E. interior L corner of Claim 48

Offset 20 1/2 North. Then ran

East random claim line

2.64 line between stas 4 & 5

11.00 Offset 30 1/2 S South

16.50 " 15 " North

22.52 Falls 10 1/2 S South of

2.67

19.88 Beginning corner

1

May 13 1914.

Chain { J.D. Sullivan  
J. Sutton.

Corrected, 15.198

Sta	Bearing	Dis
0	N 00° 40' E	13.91
1	S 54° 05' W	7.08
2	S 60° 20' W	17.16
3	S 24° 55' E	1.52
4	East	19.93

Containing 15.03 A.

May 13, 1914.

0042 42

1/4 sec corner between sets 17 & 20

Begin at the 1/4 corner West of the

4.

Survey for School Lot in  
 Called by F. H. Hedrick. Chairmen  
 Begin at Twp cor between Tps 21 & 22 S  
 Original trees. Thence ran West. Var.  
 at 2.73 chs offset 15 1/2 North  
 At 7.00 chs regain line  
 At 9.25 chs set stake as corner  
 14.35 " Set stake for corner  
 And mark A. W. Oak 36 in dia 55.4° E  
 Thence South 3 chains  
 Then East 5 chains to stake first set

S. 36 T 21 S R. 6 W

District No. 31, Supd. 5<sup>th</sup> 1914.  
 P. L. Tucker & W. W. Taylor.  
 and Ranges 58 & West set corner by  
 21° 54' East. 14.58 chains  
 described as Beginning corner in Lease  
 34 1/2 MS, Marked C.S. and BT.  
 on line 9.26 chs North of Twp. corner

Survey for John Hedrick  
 Begin at N.E. corner Jas. Mc Granary  
 Chain #38 Set post for corner from  
 original trees. Thence run random  
 West. setting temp stakes every 5  
 chains  
 At 35.20 intersect N.S. line 83 Ms  
 North. of Chain corner.  
 Return and correct line by setting  
 stakes over

S 25 T 21 S. R. 6 W

002474

June 6 1914  
 Chain (R.L. Tucker  
 (R.L. Ritchey)

312.00  
 102.35  
 116.00  
 104.65  
 435.00

252/ 82.00  
 100.00  
 108.00  
 204.00  
 260.00

0.335  
 3.20  
 11.7000  
 7.1

0.226  
 1.000

102.35  
 104.65  
 9.400

23.50  
 11.05  
 35.05  
 1.15

44.00 = 20

11.75 = 2.5

70.50 = 30.2

11.75  
 82.25

T. 27 S. R. 5 W. Sec. 9.

Survey for David Hennig & Beginning at a point which bears West of the corner of Secs 9, 10, 15, & 16.

7.71 Chs.  
West 5.00  
N 1038' W 11.57  
N 83° 09' E 5.02  
S 1038' E 12.17

Work 1/2 days @ \$5.00 = \$7.50

12.17
11.57
11.57
223.74
11.87
5.01
11.87
11.87
598.65
594.69

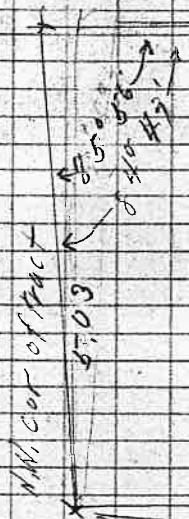
1038'

Carl Reslund.

July 4th, 1914

0045 1/2

T. 27 S. R. 5 W. N. M.



57.946 A.

11.57 Chs. S 1038' E

N. 1038' W  
12.17 Chs

S 1038' E

57.00

57.00 Chs. EAST

771 tower cor.

0046 46

46

Record Vol. 2 Pg. 179 T. 27 S, R. 7 W. Sec 24.

Survey for E. M. Seely, W. A. Taylor,  
M. A. Cozad. & J. H. Criteser being  
After looking for witness trees,  
W. M. Morin Claim 48., find no  
1/4 cor. bet secs 13 & 24. Check  
run North 25.50 chains West 11.00  
Search and find witness tree, chop  
tree, and run N. 83.24 W. set Oak post  
random. at 10.97' chs. intersect  
between Secs 13 & 24, 19.10  
Find bearing tree for N.E. Cor of  
Corner N. 83.5° E. From tree 4.50  
return and continue random  
chains E from N.W. Cor. intersect  
of N.E. Corner.

Fleecers post marked 16' E of S.E. Cor.  
7.68 chains distant from True N.E.  
Thence South random from N.E.  
At 60.56 chains intersect south  
of S.E. cor of Cl. 48. Find Oak  
no marks visible. M. A. Cozad  
the same tree that he as chainman  
and at that time found the  
find a laurel 10' dia marked  
with proper markings N. 74° W.

00427

Not interested  
(C. O. Criteser) J. S. Wilson July 16, 1914  
First July 5 Worn set as chainman  
on N.E. and N.W. corners of  
evidence of trees. I go to the  
up a stake set by Fleecer. then  
chains. Find corner set by Fleecer  
out. (C. 48. T. 27 S. R. 7 W.) set at  
Marked C. 48. & C.S. East on July 2  
line line North of 1/4 sec post  
chains North of 1/4 sec corner.  
claim 48. set Oak post for  
chains. (Post marked (C. 48. & C.S.)  
line E from N.W. corner at 25.54  
E line of claim 19 1/2 S south

of C. 48. line N 45° 48' E  
Corner of claim 48.  
Cor claim 48.

interior line of claim 20 1/2 S West  
tree to correspond to Colfax notes,  
deposes and says that this is  
an helped Oscar Thiel chop out  
original markings M. A. Cozad.  
about 10 years ago  
35' 1/2 S

continue.  
 Thence ran West random.  
 squarely, set transit, and find original  
 Original B.T. at bottom has been  
 the other blaze has been reworked  
 been cut out. Renew corner with  
 Thence South random. At 4.36  
 At 15.15 chs intersect South Claim  
 set as corner. Pine tree still stand;  
 tree sets N. 15° W. 104 Mts. offset  
 thence run West, on random  
 of Cazado's fence running East  
 the West road fence.  
 line of claim 2 Mts south of  
 and find stump of oak  
 Wood and saved marks. rock sets  
 14 ins dia N 10° E 105 Mts.  
 Thence North on random  
 At 75.57 intersect N. line of  
 cor. of C. 48.

At 12.56 chs' hit stake set by Fleece  
 tree S 27° 30' W. 55 Mts.  
 cut out and is still visible.

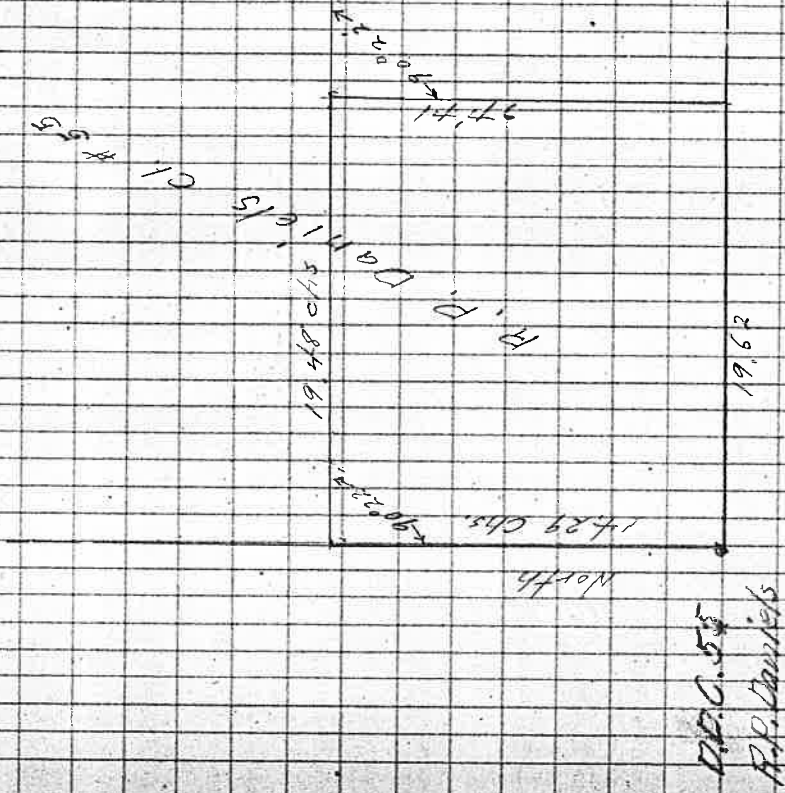
on out side. original never having  
 laurel post marked (C. 48 & C. 51)  
 Chains offset 8' West  
 line 7 Mts East of rock previously  
 eg. Mark's visible but tree dead.  
 5 Mts North

At 7.00 chains the End  
 lies 3.0 Mts North. this is

At 13.10 intersect West  
 rock set for corner check up  
 tree (which Cazado cut for  
 correct / mark on Ash  
 offset 20 Mts E.

10.55 chs offset 7 Mts E.  
 claim 10 Mts East of N.W.

Survey for Lucius Hall. Nov. 5<sup>th</sup> 14.  
T. S. R. & W.



49 19 14

July 19

Revised Survey for E.M. Seeley & M.A. Cozad.

Begin at 1/4 sec. cor between Secs.

138.24. Ran South on random.

49.00 set temp 1/4 corner.

55.49 set temp cor on claim

80.28 Intersect sec line bet sees

Return and correct cor.

Thence East from 1/4 post on

18.00 offset 10 1/15 South.

215.15 " " North

40.00 " " North.

39.05 Intersect TWP line 15 1/15

Find two trees standing and

Remove corner with laurel

E.S. on S.W. S.30. on S.E. &

Ran North from Sec' cor' random

40.09 Intersect 1/4 line 27 1/15

set on corner Continue North

65.50 Offset 12 1/15 East.

79.98 Intersect corner at post.

40.09

39.89

Trees Ok

50

July 18, 1914

Chain M.O. Cozad

U.H. Criteser

Line 2,08 Chains W of S.E. claim cor.

24 & 25 9 1/15 East of 1/4 cor.

Stake on claim line 8 1/4 line

random between 24 & 25

19,30,25 & 24

South of sec corner to sees

two down

post marked S.24 on N.W., S.26 &

S.19 on N.E.

(Mon) July 29 1914

bet sees 24 & 19.

East of 1/4 corner. Find post set

check and find trees in place.

13  
12

05151

Continue  
 West on random bet secs 13 & 24. Offset 15 1/2 North at begin car  
 5.00 13 1/2 to fence.  
 10.00 10 " "  
 15.00 9 " "  
 20.10 5 " " South Iron pin set by Fleece  
 25.69 4 " " " south of 1/4 post  
 40.19 Intersect 1/4 corner 3 1/2 sec. 24. Run random  
 Return and check fleecers post at NW corner  
 Begin at 1/4 sec corner on E of sec. 24. Run random  
 West through sec. 24. CI. 48  
 25.42 Intersect claim line 31 1/2 North of S.E. Corner on most E bdy  
 12.37 Length of claim line used as offset  
 37.98 set 31 1/2 North on original 1/4 line  
 40.00 set temp 1/4 post south of 1/4 post.  
 80.28 Intersect sec line 1 1/2 to field notes  
 Find two trees to conform badly chopped and no marks  
 Tree N. 25° E. having been I mark  
 Visible on either tree  
 A B Oak 12" N. 56° W 19 1/2  
 " " 12" N. 25° E 64 "  
 Return and set 1/4 post in sec. 24 2 1/2 North of random West thro. sec.  
 and 4 1/2 1 1/2 West of random south thro' sec.  
 Mark. A. W. O. 36 ins N 68 1/2° W 268 1/2  
 " " " 6' " N 41° 20' E 50 "

Tues July 21, 1914

Survey for F.S. Green, Wilbur, Dec 29<sup>th</sup> 1914.

Tract to be deeded to Aldrich

Sta.	Azimute	Being	dis	
0				Initial point of original plat
1	104° 41' 2"	S. 13° 01' E	184.4'	
2	38° 10' R	S. 25° 09' W	112.0'	
3	66° 35' R	N 80° 16' W	81.5'	
4	69° 56' R	N 18° 20' W	299.1'	
5	110° 00' R	S 88° 20' E	181.8'	Contents 111 Acres.

Tract no. 2 to be deeded to

J. C. Kagi.

Beginning at a point which lies

- S. 88° 20' E 255.3'
- S. 36° 24' W 171.2'
- S. 32° 43' W 83.4'
- S. 19° 03' W 22.5'
- S. 00° 54' E 34.5'

point of Roseburg Home Orchards Tract

Plot D. Sec 7 T. 26 S. R. 5 W. W.M.

Thence S. 00° 54' E 69.5'

S. 6° 02' E 121.7'

S. 64° 45' E 9'

N 21° 54' E 171'

N. 67° 29' W. 92.8'

To place of beginning  
Contents 21 Acres.

F.S. Green continued

0 88°20'E 255.3

536°44'W 171.2

522°43'W 83.4

519°03'W 22.5

540°54'E 34.5

567°29'E 92.8

Thence

521°54'W 170.5'

564°45'E 10.

N313°4'E. 171.

N64°45'W 10.

contents 204 Acres

initial point

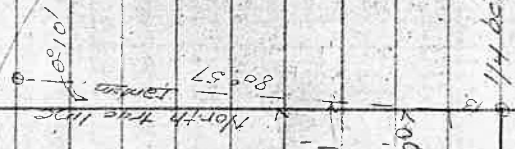
To place of beginning



secs 9 & 10 T. 24 S. R. 6 W.

Survey for Henry Landers

Sta Def Mag br Ded Br Dis.  
0 589°20'E 189°39'E 20.00



Note See Page 34

This diagram to explain.

Floyd's Work at time

of making competent

for Henry Landers

deed.

589°07'E 20.00  
Sec cor bet 9-10-15-16.

1000'  
114 bet 10-15

20.00

Jan 15 1916

1000' - 1000' - 1000' - 1000' - 1000'

20.00 set stake  
1990 - 1000' from fence  
winter set line 13 145 North

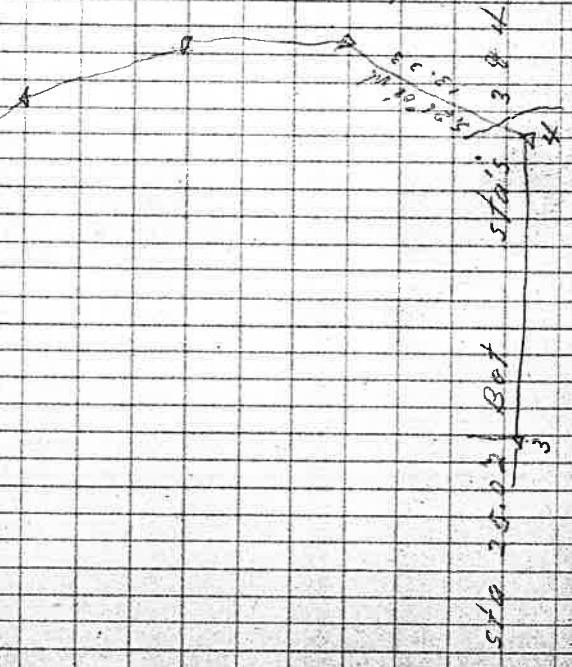
Recd set at cor secs 9, 10, 15-16.  
Check, find cor in place

Continue for Harry Landers  
Line on East of s.w. line B  
Def. Mag Bng. Ded Bng. Dis.

4	45° 41'	N 89° 13'E	
3	21° 14'	S 43° 30'E S 44° 49'E	7.80
2	33° 04'	S 23° 36'E S 23° 35'E	7.66
1	18° 39'	S 10° 30'W S 9° 29'W	5.95
A 0	66° 45'	S 29° W S 28° 05'W	12.33 ok.

Angle to left from sta 4

360°  
Angle turned East on line bet sta 9 & 10  
on line No 1 around ranch

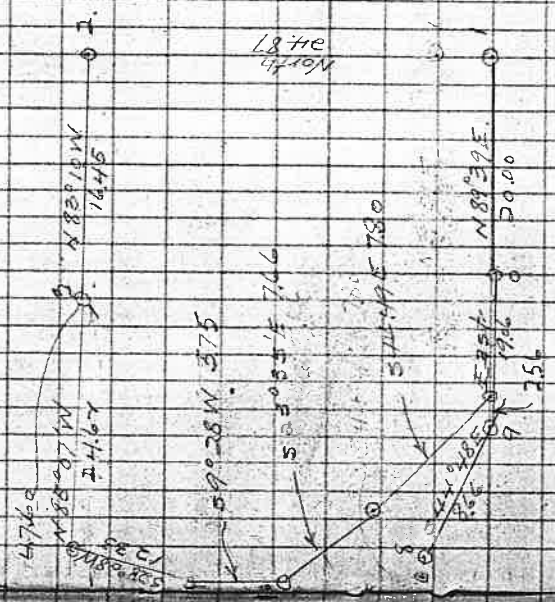
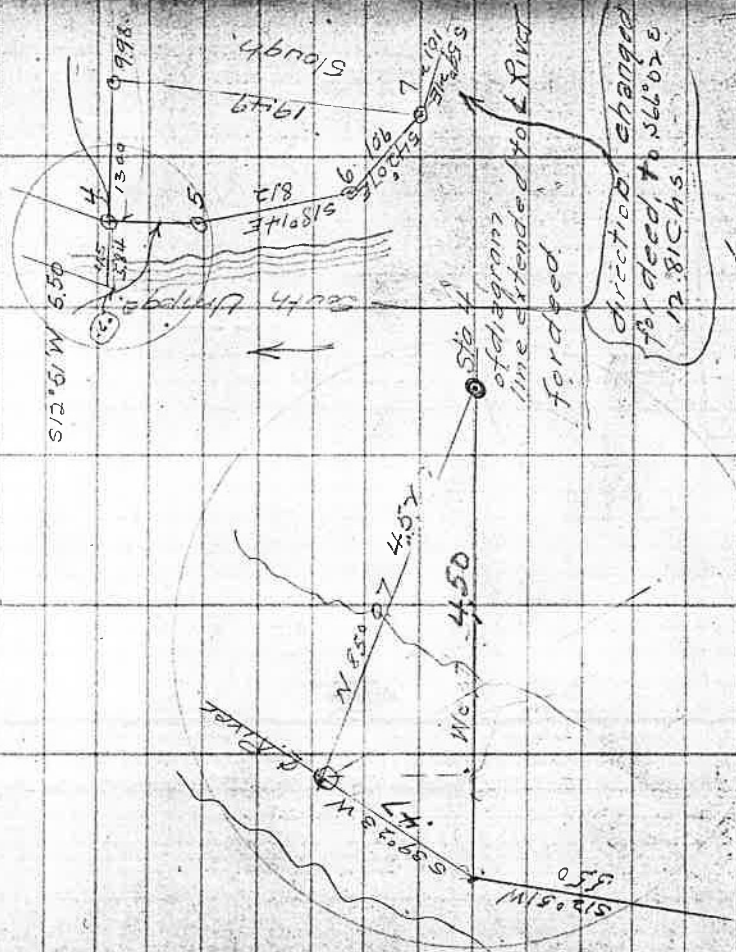


sta 10 25.22 Bet sta 3 8 4  
3  
4

Sta	Def.	MC	CC.	Dist.
3				
A	78°12'45" W	517'30"	516°41' W	34.60
				19.49
7	76°03' S	558'35"	559°22' E	

Line West of Slough.

Dir. of course 3-4 N 85°07' W.  
 Foresight on Sta 4.  
 To Sta 7.



direction changed  
 foreclosed to 566.02 &  
 12.81 Chs.

Station of diagrams  
 line extended to River  
 foreclosed.

section line between secs, 9 & 16.

Continue for Henry Landers.

Begin at corner of secs. 9, 10, 15 & 16.

West on random set stakes every 5 chs.

Turn 21' to left from transite line East

19.06

21.62

0058 58  
Set stake for East side of SLEW  
Bank of river connect with river traverse

Henry Landers  
Complete - Ranch Transfer

Course	Dist	N	S	E	W	Course	Dist	N	S	E	W
N 89° 39' E	20.00	0.13		20.00		N 85° 07' W	13.00	1.11			12.85
N 01° 10'	24.87	24.87				S 13° 57' W	5.50		5.36		1.20
N 83° 10' W	16.48	19.6			16.36	S 18° 14' E	8.12		7.71	2.54	
N 85° 07' W	47.60 48.00	40.9			47.43	S 42° 07' E	9.01		4.68	6.04	
S 13° 57' W	5.50		5.36		1.22	S N 16° 14' E	19.49	18.67		5.89	
S 18° 14' E	8.12		7.71	2.54			19.78	19.75	14.17		14.17
S 42° 07' E	9.01		6.68	6.04							
S 59° 21' E	10.12		5.16	8.71							
S 44° 48' E	8.66		6.14	6.10							
East	21.62			21.62							
		31.05	31.05	65.01	65.01						
E End to E Side of Slough											
N 89° 39' E	20.00	0.13		20.00							
North	24.87	24.87									
N 83° 10' W	16.48	19.6			16.36						
N 85° 07' W	24.62	20.9			24.53						
S 28° 08' W	12.33		10.87		5.81						
S 9° 28' W	15.75		5.67		0.75						
S 23° 35' E	7.66		7.02	3.06							
S 44° 48' E	7.82		5.53	5.50							
E	19.06		19.06								
		29.05	29.09	47.62	47.65						



Sunday  
Jan 14 1914

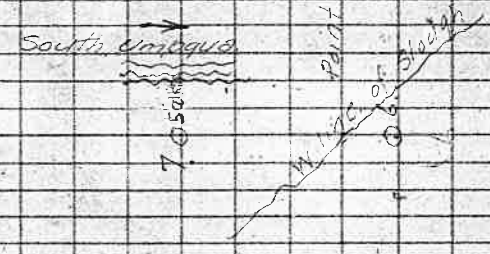
Gold and Rain

Course Def Mag C. C. C. Chris.

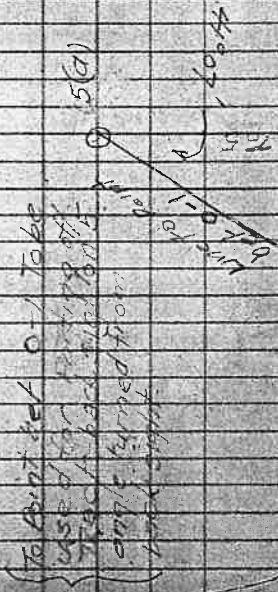
Assembly line to OA

9 A				12.33
8 A	10° 18 L	S 46° 45 W	S 39° 28 W	20.15
7 A	1° 39 R	S 50° 45 W	S 49° 46 W	9.92
6 A	3° 02 L	S 49° 20 W	S 48° 07 W	3.39
				12.11
(OA)	87° 44 L		S 87° 44 E	31.27
				24.00
				4.05
5(A)	41° 07 R	S 86° 25 E	N 87° 42 W	9.67

F. C. C. K.  
J. W. G. A. K.  
I. F. L. A. N. D. E. R. S.  
C. E. W. I. N. S. T. O. N.



Fore sight on 'I' Angle turned to SA.  
Point (OA) on first course.  
Point at bottom of hill for cutting off hill land  
Intersect line on S side slough



To Point of O-1 Take  
use of fore sight on  
Point at bottom of hill  
cutting off hill land  
Intersect line on S side slough

062 62

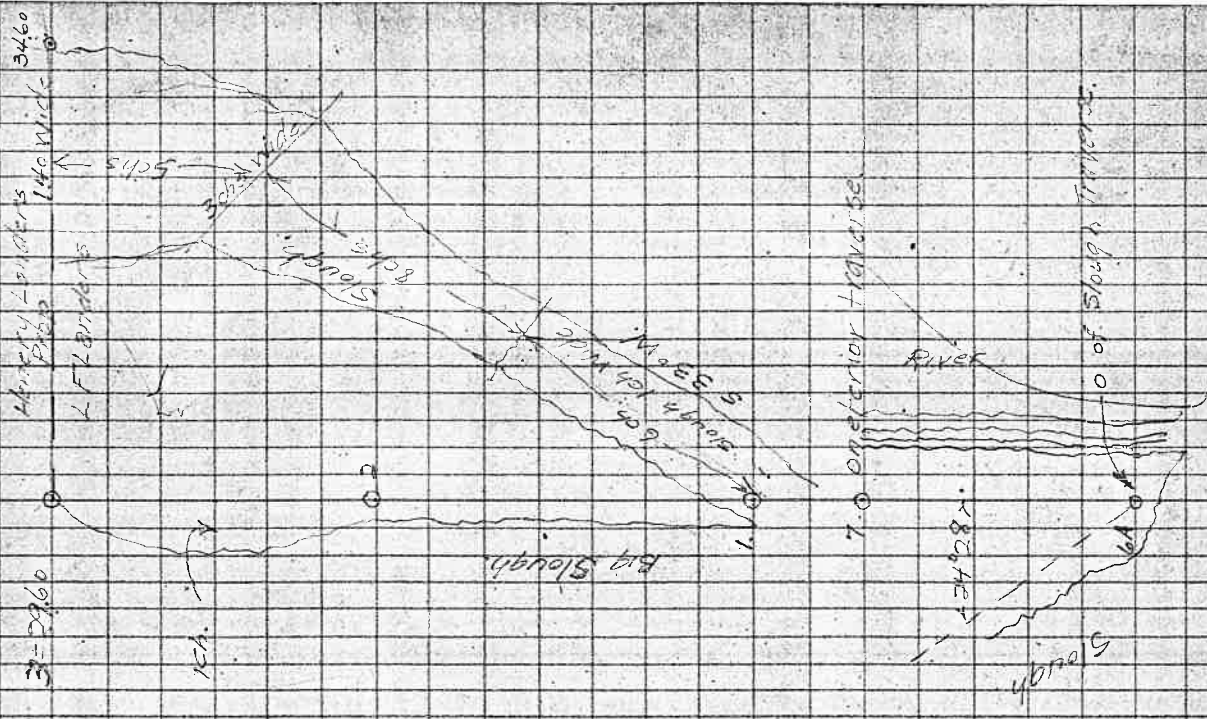
Place of begining

0 A			1648
10 A	7957R	583°10E	4760.
9 A	124°39L	584°35E	585°11E. 45

Traverse on W Side of Slough

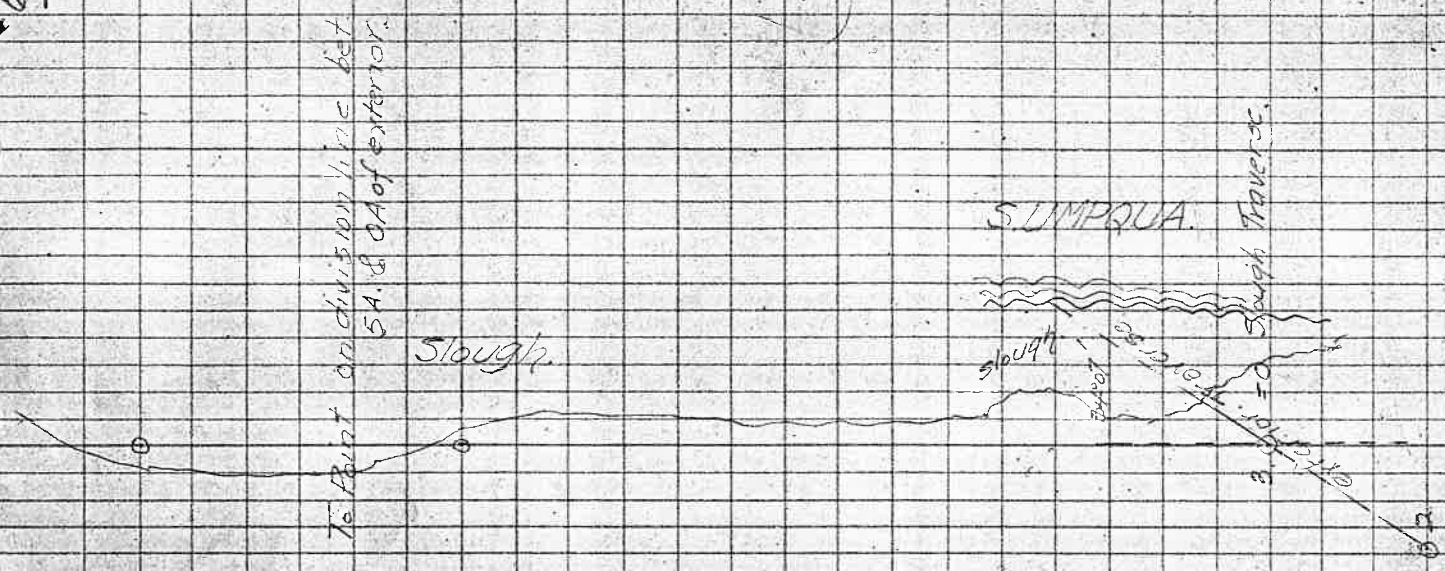
0063 63

COURSE	DEF	MAGC.	C.C.	DIST.
3	Δ	R 67°17'	N 85°12' W	8.87
4				500
5				10.35
2	Δ	R 19°01' E	S 28°45' W, S 27°31' W	
1	Δ	R 15°14' E	S 8°45' W, S 8°25' W	11.24
7	Δ	R 24°28' E	S 25°00' W, S 23°39' W	3.39
6	Δ		S 48°07' W	



06464

Course	Def.	Mag. C.	Mag. C.	Traverse on E. Side of Slough	Dist
3 Δ	17°19L	538°40W	537°41W		13.47
2 Δ	11°11R	556°20W	555°00W		10.73
1 Δ	17°23R	544°30W	543°49W		5.75
0 Δ	34°07L	527°00W	526°26W		4.81
					560.33W = base 1190



Henry Landers  
60 = 246  
L.F. Landers

slough.

6Δ 81°0'R N 84°00'W N 85°10'W  
9.17

5Δ 5°09'R 514°45'W 513°19'W  
12.67

4Δ 729°01' 59°00'W 58°48'S  
11.97



L Flanders Survey  
 Traverse around bottom of Hill

533'15W 800

17509 582'15E 583'10E

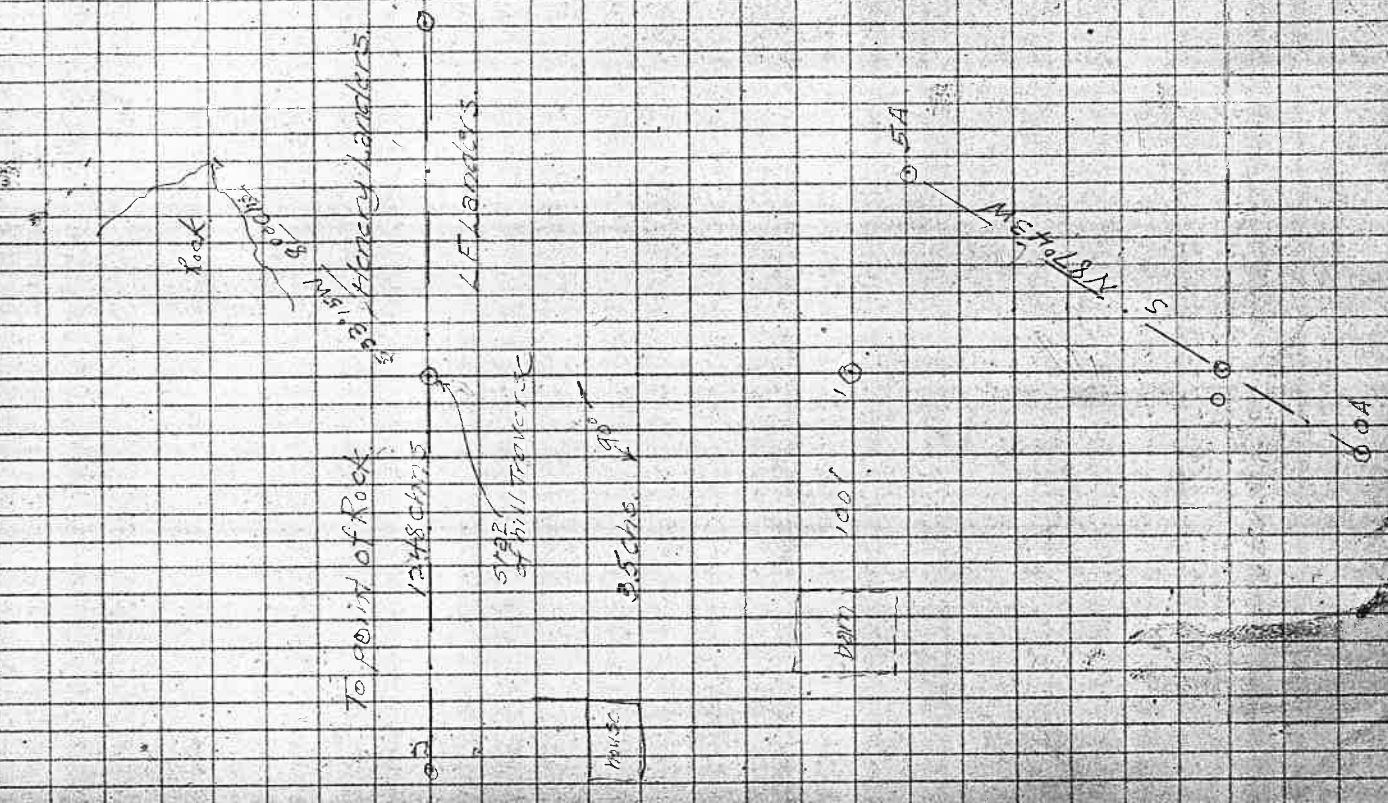
1697

700

1A 31'20L 56°45'E 58°02E 10

1895

1809L 524'00W 523'8W



6267

Closure of L.Flanders. Ranch

Closure for part to be cut

Course	dist.	N	S	E	W	Course	dist	N	S	E	W
North	5570	5570				N	2027	2027			
West	443				443	N	4.43				443
S60°33W	9.01		443		7.85	S60°33W	9.01		443		7.85
S58°20W	7.75		406		660	S58°20W	7.75		406		660
S48°18W	6.55		436		489	S48°18W	6.55		436		489
S51°09W	12.11		760		943	S51°09W	9.62		603		749
S48°07W	9.92		662		739	S87°43E	3129		125	3126	
S49°46W	20.15		1301		1538		2027	2013	3126		3127
(S39°28W)	12.33		952		784	Closure For Slough					
S85°07E	47.60		409			S26°36W	4.81		431		214
S83°10E	1648		196		1630	S43°49W	575		415		398
		5570	5565	6373	63.81	S55°00W	1347		773		1103
			(55.70)		(63.73)	S37°44W	1197		947		732
						S8°40W	1267		1253		191
						S13°49W	917		890		219
						N85°07W	498				496
						N27°31E	887			410	
						N8°25E	1035			154	
						N23°39E	1124			451	
						N48°07E	339			257	
						N51°09E	1211			943	
						N48°18E	655			489	
						N58°30E	775			660	
							4710		47.09	33.59	33.53

Closure for back part of Ranch

Closure of hilly Tract.

Course	dist	N	S	E	W
S 23° 18' W	1896		17.39		7.50
S 8° 02' E	1697		16.82	2.37	2.77
S 83° 10' E	1248		1.48	12.39	
N	3543	3543			
N 87° 42' W	729	729			728
		3577	5569	1476	1478

89  
68

Feb. 1st 1915

B. Montgomery. T. 27 S. R. 7 W. Sec 34

Check up work and make measurements for ties to fence and County Road.

I also correct rock at N.E. corner of Mr. Montgomery's 100 acre tract.

For sketch for ties see opposite page.

at 6 chs south from N.E. Cor fence is 10 lks East of line

at 8 chs from N.E. Cor 15 South line of County Road 77 lks wide at which line fence is 11 lks East of line

69

Random from West

28 lks

30 lks from true corner

wire fence on North

25.00

NE County Road

40.00

40.00

25.00

fence 8 lks

2 chs

N  
A  
S

42



**Field Book No. 39**

**Pages 70 - 76 Blank**

June 5 1914

Lot 43° 39'

200,	+	22°	29'	19.3"			4-AM
	+		1'	25.35			
	+	22°	30'	44.65	+ Ref	38" = 22° 31' 22"	9-AM
	+	22°	30'	61.72	+ Ref	31" = 22° 31' 32"	10-AM
				17.07			
	+	22°	30'	78.79"	+ Ref	28" = 22° 31' 47"	11-AM
				34.04			
	+	22°	31'	52.93	+ Ref	28" = 22° 32' 21"	1-PM
				17.07			
		22°	32'	00.00	+ Ref	31" = 22° 32' 41"	2-P.M.
				17.07			
		22°	32'	17.07"	+ Ref	38" = 22° 33' 05"	3-P.M.
				12.22			
		22°	32'	74.14	+ Ref	53" = 22° 33' 27"	4-PM

Send notes  
to Mr. Mednick  
at plain for  
his on South  
side of Sec 36  
also West of  
same side  
T. J. D. B. B. W.

Cab 3 @ 5 15.00  
 Outser 1/2 @ 2 3.60  
 Casad 1 1/2 @ 2 3.60  
 Mileage 10 @ 1.00 10.00  
 42.2  
 35.0  
 7.20  
 13.00  
 13.00

M 8 1914

Dr. Verker Aberne 9

for Cult Hunt Card

Coe manning Paid Victor Thornton's Account Dr

8.20 W 25.54  
25.74

12.56  
13.10  
66

25.54  
12.56  
1.08  
13.10  
12.0  
26.01  
10.91  
1.10 E

25.91  
2.54  
2.0  
2.7

260'

9.40  
8.30  
1.10  
7.20  
8.30  
14.20  
29.75

60.56  
15.23  
75.79  
75.64  
1.15  
76.43  
76.57

VV  
12.56  
1.68  
1.67  
13.10  
1.0  
23.92

75.57  
75.48  
12

28/8

4353  
4353  
46213

4353 480000  
4353  
4170

244353  
2191  
1362  
35553

86  
66  
546  
66.6

385700  
833 1/2

13572  
8252  
8532  
905752

1450  
1850  
6076  
11100  
12950  
140600

14000  
12950  
10000

1371  
2076  
8226  
9597  
104196  
1391  
76  
8346  
9737  
105716

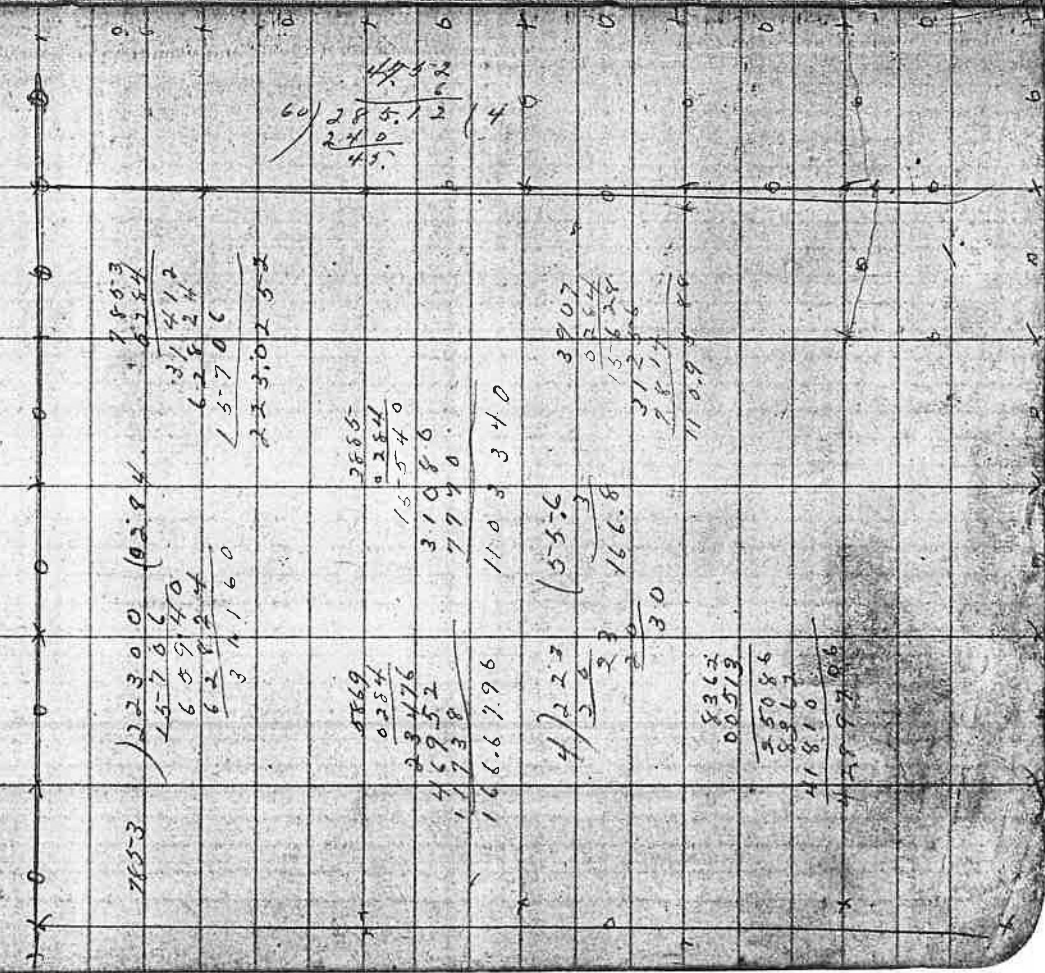
April 22, 1914  
 AM. Dec. + 120 0' 17.9"  
 2 PM 120 8' 20.7 + Ref 0° 0' 29" 120 8' 59.6 2 PM  
 120 9' 11.3 + Ref 52" 120 9' 02.3 3 PM  
 120 10' 02.0 + Ref 1' 11" 120 11' 18 4 PM

April 23, 1914  
 Dec + 130 20' 29.6 4 AM  
 120 29' 41.6 + Ref 52" 120 30' 33" 3 PM

April 24, 1914  
 Dec. 120 40' 29.1" 4 AM  
 120 50' 24' + Ref 1' 11" 120 51' 35" 1 PM  
 April 26, 1914

Dec 130 58' 19 4 AM  
 4 45  
 14 03 04' + Ref 140 03' 29" 10 AM

1190) 59,000 (6.47  
 49180  
 ---  
 98820  
 38600  
 ---  
 32760  
 5840  
 ---  
 4645  
 10647  
 ---  
 92536  
 18592  
 ---  
 22788  
 30072.66



2553  
 22300 (22.84) 1503  
 15706 6384  
 65940 31412  
 62824 62824  
 34160 15706  
 22302.52

2569  
 0254  
 23476 15540  
 46952 31086  
 11738 7790  
 1666796 1103340

4) 223 (55.6  
 36  
 ---  
 23 166.8  
 20  
 ---  
 30  
 3907  
 0254  
 15828  
 31256  
 2817  
 1109780

5362  
 00519  
 55086  
 5867  
 41810  
 1109780

60) 285.12 (4.752  
 240  
 ---  
 45.12

0080

Edwd Hancock

Work 7 1/2 days 37.50  
 Notes 1.50  
 Recording notes 1.00  
 Stage and cartfare 2.00  
 Total 42.00

40.00  
 33.68  
 33.66  
 6.32  
 6.37

33.68  
 33.71  
 13.96  
 13.68

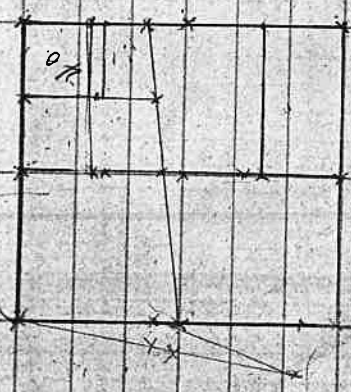
492.6  
 015.  
 246.30  
 493.6  
 738.90

015.  
 13.40  
 2500.  
 10.  
 20.0

1360  
 015.  
 8000  
 10.  
 4.

015.  
 3000  
 30000

2



2.61.54  
 76.65  
 76.66  
 2.61.61

140  
 12  
 260  
 140  
 1680.

7631  
 .0020  
 70479  
 15662  
 12.7099

48  
 13  
 27.

49.72  
 12  
 99.34  
 49.72  
 896.64  
 56.

21 30  
 1032  
 2304  
 179 60  
 75 19  
 10741

18.63  
 57.00  
 372.6  
 13240  
 13041  
 6990  
 85.89

5273  
 1563  
 10272  
 8589  
 13041  
 3226  
 30559

0273  
 2000  
 0546000

51  
 44

3664  
 26000  
 26676  
 23240  
 22005

10076  
 3000  
 3280

3664  
 28076  
 22000.8  
 25676  
 27874.8

10076  
 28000  
 38000  
 10000  
 190000

0076  
 10000  
 35000  
 76000  
 114600  
 60800

