

Field Book #30

DOUGLAS COUNTY

1912

FB 30

No 7

FIELD BOOK

30

505

Index to Book No 7

Name.	D.L. Cor. Sec.	T. - R.	Cor. Establ.	Date.	Page.
Allen, F.C.	John Scott.	22-4	{ NW Cor. & Cor. bet. Allen and Drew }	Jan. 8. 1913.	40
Boggs U.I.		28-6		Cor 1:2-11-12.	
Dorner, John.					44- 45.
Govt. field notes					73- 74.
Hansen, Everit & Morris	#46	24-5.			31 37
Maddux L.O.	#43			Dec. 9. 1912.	36 -- 38
Overland Orch					26. -- 30

Pine Crest Irrig	1	Oct 30/1912.		
Smith Clay	59.	Dec. 13/1912.	28 - 6.	
Singleton W.	42.		27 - A. (Cor. 1782) Sec 4)	
Wise L. W.	41			
Watts & Rose.	42.			

PINECREST IRRIGATION DITCH

October 30th, 1912

Cross-section of Creek at Dam

Sta	T	R	F	
0-5	504.80	1.7		
0+00		4.8	500.00	Stake on L. Bank of South Deer Creek Top of Dam 1.0 ft. above bottom of intake of Ditch.
0+5		8.4		Water Edge L Side
+10		8.85		
+15		9.00		
+18		8.40		Water Edge R Side
+20		6.75		
+25		2.75		
+30		1.10		
B.M.		6.28	498.52	Alder 12" on R. side of Creek 15' below dam

PINECREST IRRIGATION DITCH

Levels to Locate Ditch:

Stakes set 1.5 ft above bottom of Ditch.

Sta	+	π	-	R.	E	G	G.R.
B.M.	6.28	504.80			498.52		
0+00						500.50	4.30
+20						500.45	4.35
+40						500.40	4.40
+60	0	4.36	504.71	4.45	500.35	500.35	4.45
+80						500.30	4.41
1						500.25	4.46
+20	0	10.71	510.96	4.51	500.25	500.20	4.51
+40						500.15	10.81
+60						500.10	10.86
+80						500.05	10.91
2					9.91	501.05	Cut 10'
+20						500.00	Noon, Oct. 30th 1912
+40	0	3.89	505.56	9.29	9.29	499.95	Cut 177
+60					4.87	501.67	0.84
+80						499.90	
3						499.85	
+20						499.80	
+40						499.75	
+60						499.70	
+80						499.65	
						499.60	
						499.55	
						6.01	

on Alder 14" below Ditch

Sta	+	T	-	R	E	Grade	G.R.
4	0	503.56	6.06		499.50	499.50	6.06
+20	4.20	503.70				499.45	4.25
+40						499.40	4.30
+60						499.35	4.35
+80						499.30	4.40
5						499.25	4.45
+20						499.20	4.50
+40	5.29	504.44	4.55		499.15	499.15	4.55
+60						499.10	5.34
+80						499.05	5.39
6						499.00	5.44
+20						498.95	5.49
+40						498.90	5.54
+60						498.85	5.59
+80	3.65	502.45	5.64		498.80	498.80	5.64
7						498.75	3.70
+20						498.70	3.75
+40						498.65	3.80
+60						498.60	3.85
+80						498.55	3.90
8						498.50	3.95
+20	4.95	503.40	4.00		498.45	498.45	4.00
+40						498.40	5.00
+60						498.35	5.05
+80						498.30	5.10

Sta	+	T	-	R.	E	Grade	G.R.
9		503.40				498.25	5.15
+20						498.20	5.20
+40						498.15	5.25
+60						498.10	5.30
+80	3.19	501.24	5.35		498.05	498.05	5.35
10	1.53	499.53	3.24	2.40	498.00	498.00	3.24
+20					497.13	497.95	1.58
+40						497.90	1.63
+60						497.85	1.68
+80	6.97	504.81	1.69		497.84	497.80	1.73
11						497.75	7.06
+20						497.70	7.11
+40				6.65	498.16	497.65	7.16
+60						497.60	7.21
+80						497.55	7.26
12						497.50	7.31
+20						497.45	7.36
+40	7.59	504.99	7.41		497.40	497.40	7.41
+60						497.35	7.44
+80						497.30	7.69
13						497.25	7.74
+20						497.20	7.79
+40						497.15	7.84
+60						497.10	7.89
+80	4.66	501.71	7.94		497.05	497.05	7.94

5:00 P.M.
8:30 A.M.
Oct 30th, 1912
Oct 31st, 1912
Clear and Cool

Cut 0.51'

Sta	+	x	-	R.	E.	Grade	G.R.
14		501.71				497.00	471
+20						496.95	476
+40						6.90	481
+60						6.85	486
+80						6.80	491
15	6.38	503.13	496		496.75	496.75	496
+20						6.70	6.43
+40						6.65	6.48
+60						6.60	6.53
+80				6.18	496.95	6.55	6.58
16						496.50	6.63
+20						6.45	6.68
+40						6.40	6.73
+60						6.35	6.78
+80				6.43	496.70	6.30	6.83
17						496.25	6.88
+20						6.20	6.93
+40	4.45	500.60	6.98		496.15	6.15	6.98
+60						6.10	4.50
+80						6.05	4.55
18						496.00	4.60
+20						5.95	4.65
+40						5.90	4.70
+60						5.85	4.75
+80						5.80	4.80

Cut 0.4

Cut 0.4

Sta	T	R	E	Grade	G.R.
19				495.75	4.85
+20				570	4.90
+40			495.65	5.65	4.95
+60				5.60	6.29
+80				5.55	6.34
20				495.50	6.39
+20				5.45	6.44
+40				5.40	6.49
+60				5.35	6.54
+80				5.30	6.59
21			495.30	495.25	5.95
+20				5.20	6.00
+40				5.15	6.05
+60				5.10	6.10
+80				5.05	6.15
22				495.00	6.20
+20				4.95	6.25
+40			494.90	4.90	6.30
+60				4.85	7.01
+80				4.80	7.06
23				494.75	7.11
+20				4.70	7.16
+40				4.65	7.21
+60				4.60	7.26
+80				4.55	7.31

Omitted (In Plan L)

Sta	+	X	-	R	E	Grade	G.R.
24	6.54	501.86	7.36		494.50	494.50	7.36
+20		501.04				445	6.59
+40						440	6.64
+60						435	6.69
+80						430	6.74
25						494.25	6.79
+20						420	6.84
+40						415	6.89
+60						410	6.94
+80						405	6.99
26	4.96	498.96	7.04		494.00	494.00	7.04
+20						395	5.01
+40						390	5.06
+60						385	5.11
+80						380	5.16
27						493.75	5.21
+20						370	5.26
+40						365	5.31
+60						360	5.36
+80						355	5.41
28						493.50	5.46
+20						345	5.51
+40						340	5.56
+60	2.74	496.14	5.56	2.69	493.40	335	2.79
+80						330	2.84

Noon Oct 31st 1912

Cut 2.1
" 2.0

Sta.	+	T	-	R	E	Grade	G.R.
29		496.14				493.25	2.89
+20						3.20	2.94
+40						3.15	2.99
+60						3.10	3.04
+80						3.05	3.09
30					493.00	493.00	3.14
+20	0.84	493.84	3.12			2.95	0.89
+40						2.90	0.94
+60						2.85	0.99
+80	3.68	496.55	0.97		492.87	2.80	3.75
31						492.75	3.80
+20						2.70	3.85
+40						2.65	3.90
+60						2.60	3.95
+80						2.55	4.00
32					492.50	492.50	4.05
+20						2.45	4.10
+40						2.40	5.81
+60						2.35	5.86
+80						2.30	5.91
33					492.45	492.25	5.96
+20						2.20	6.01
+40						2.15	6.06
+60						2.10	6.11
+80						2.05	6.16

Sta	t	X	-	R	E	Grade	G.R
34		498.21				492.00	6.21
t20	3.54	495.49	6.26		491.95	1.95	6.26
t40						1.90	3.59
t60						1.85	3.64
t80						1.80	3.69
35						491.75	3.74
t20						1.70	3.79
t40						1.65	3.84
t60						1.60	3.89
t80						1.55	3.94
36						491.50	3.99
t20	3.49	494.94	4.04		491.45	1.45	4.04
t40						1.40	3.54
t60				2.92	492.02	1.35	3.59
t80						1.30	3.64
37						491.25	3.69
t20	5.82	497.02	3.74		491.20	1.20	3.74
t40						1.15	5.87
t60						1.10	5.92
t80						1.05	5.97
38						491.00	6.02
t20						0.95	6.07
t40						0.90	6.12
t60						0.85	6.17
t80						0.80	6.22

W. Oak 50" diam.

Sta	+	π	-	R	E	Grade	G. R.
39		497.02				490.75	6.27
+20	5.59	496.29	6.32		490.70	0.70	6.32
+40						0.65	5.64
+60						0.60	5.69
+80						0.55	5.74
40					490.50	490.50	5.79
+20	4.57	495.07	5.79			0.45	4.62
+40						0.40	4.67
+60						0.35	4.72
+80						0.30	4.77
41						490.25	4.82
+20						0.20	4.87
+40	5.34	495.49	4.92		490.15	0.15	4.92
+60						0.10	5.39
+80						0.05	5.44
42						490.00	5.49
+20						9.95	5.54
+40						9.90	5.59
+60						9.85	5.64
+80						9.80	5.69
43					489.75	489.75	5.74
+20	3.10	492.85	5.74			9.70	3.15
+40						9.65	3.20
+60						9.60	3.25
+80						9.55	3.30

5:00 P.M. Oct 31st 1912.
 Rain. Nov 1st 1912.
 11:00 A.M. " 2nd 1912
 Cloudy and showers

Sta	+	-	R	E	Grade	G.R.
44					489.50	3.35
+20					9.45	3.40
+40					9.40	3.45
+60					9.35	3.50
+80					9.30	3.55
45				489.30	489.25	6.65
+20					9.20	6.70
+40					9.15	6.75
+60					9.10	6.80
+80					9.05	6.85
46					489.00	6.90
+20					8.95	6.95
+40					8.90	7.00
+60					8.85	
+80					8.80	
47					488.75	
+20					8.70	7.20
+40					8.65	7.25
+60					8.60	7.30
+80					8.55	5.44
48					488.50	5.49
+20					8.45	5.54
+40					8.40	5.59
+60					8.35	5.64
+80					8.30	5.97
				488.35		

{ 46+40 to 47+20 Flume
across canyon c.l.

18111110

Sta	+	T	-	R	E.L.	Grade	G.R.
49		492.27				488.25	4.02
+20						8.20	4.07
+40						8.15	4.12
+60						8.10	4.17
+80						8.05	4.22
50	6.20	494.25	4.22		488.05	488.00	6.25
+20						7.95	6.30
+40						7.90	6.35
+60						7.85	6.40
+80						7.80	6.45
51	4.64	492.39	6.50		487.75	487.75	6.50
+20						7.70	4.69
+40						7.65	4.74
+60						7.60	4.79
+80						7.55	4.84
52						487.50	4.89
+20						7.45	4.94
+40						7.40	4.99
+60						7.35	5.04
+80						7.30	5.09
53						487.25	5.14
+20						7.20	5.19
+40						7.15	5.24
+60	6.26	493.36	5.29		487.10	7.10	5.29
+80						7.05	6.31

Sta	+	-	R	E	Grade	GR
54					487.00	6.36
t20					6.95	6.41
t40					6.90	6.46
t60					6.85	6.51
t80					6.80	6.56
55					486.75	6.61
t20	4.41	4.91.16	6.61	486.75	6.70	4.46
t40					6.65	4.51
t60					6.60	4.56
t80					6.55	4.61
56					486.50	4.66
t20	5.14	4.91.64	4.66	486.50	6.45	5.19
t40					6.40	5.24
t60					6.35	5.29
t80					6.30	5.34
57					486.25	4.65
t20	5.47	4.90.90	6.21	485.43	6.20	4.70
t40					6.15	4.75
t60					6.10	4.80
t80					6.05	4.85
58					486.00	4.90
t20					5.95	4.95
t40					5.90	5.00
t60					5.85	5.05
t80					5.80	5.10

Sta	+	T	-	R	E	Grade	G.R.
59		490.90				485.75	5.15
+20	2.50	488.20	5.20		485.70	5.70	5.20
+40						5.65	2.55
+60						5.60	2.60
+80						5.55	2.65
60						485.50	2.70
+20						5.45	2.75
+40						5.40	2.80
+60						5.35	2.85
+80						5.30	2.90
61						485.25	2.95
+20	2.96	488.16	3.00		485.20	5.20	3.00
+40						5.15	3.01
+60						5.10	3.06
+80						5.05	3.11
62						485.00	3.16
+20						4.95	3.21
+40						4.90	3.26
+60						4.85	3.31
+80	5.61	490.41	3.38		484.80	4.80	3.36
63						484.75	3.66
+20						4.70	3.71
+40						4.65	3.76
+60	6.39	490.99	5.81		484.60	4.60	3.81
+80						4.55	3.86

59+60 to 60+00. Flume

5:00 PM Nov 28 1912
10 A.M. Nov 30 1912

Cloudy and Cool
Showers

Sta	+	π	-	R	E	Grade	GR
64		490.99				484.50	649
+20						445	654
+40						440	659
+60						435	664
+80						430	669
65						484.25	674
+20						420	679
+40						415	684
+60	5.53	489.68	6.84		484.15	410	558
+80						405	563
66						484.00	568
+20						395	573
+40						390	578
+60						385	583
+80	3.80	487.65	5.83		483.85	380	3.85
67						483.75	390
+20						370	395
+40						365	400
+60						360	405
+80						355	410
68						483.50	415
+20	6.07	489.57	4.15		483.50	345	612
+40						340	617
+60						335	622
+80						330	627

Sta	+	T	-	R	F	Grade	G.R.
69		489.57					
+20	5.10	488.30	6.97		483.20	3.20	6.97
+40						3.15	5.15
+60						3.10	5.20
+80						3.05	5.25
70					483.00	4.83	0.00
+20	4.01	487.01	5.30			2.95	4.06
+40						2.90	4.11
+60						2.85	4.16
+80						2.80	4.21
71					482.75	4.82	0.75
+20						2.70	4.31
+40						2.65	4.36
+60						2.60	4.41
+80						2.55	4.46
72					482.50	4.82	0.50
+20						2.45	4.56
+40						2.40	4.61
+60	6.43	483.78	4.66		482.35	2.35	4.66
+80						2.30	6.48
73					482.25	4.82	0.25
+20						2.20	6.58
+40						2.15	6.63
+60						2.10	6.68
+80						2.05	6.73

7450 Canyon St

Grade E.R.

Sta	+	π	-	R	E	Grade E.R.
74		488.78				482.00
+20	4.58	486.58	6.78		482.00	1.95 463
+40						1.90 468
+60						1.85 473
+80						1.80 478
75						481.75 483
+20						1.70 488
+40						1.65 493
+60						1.60 498
+80						1.55 503
76						481.50 508
+20						1.45 513
+40	4.39	485.84	5.13		481.45	1.40 444
+60						1.35 449
+80						1.30 454
77						481.25 459
+20						1.20 464
+40						1.15 469
+60						1.10 474
+80	6.89	487.94	4.79		481.05	1.05 479
78						481.00 694
+20						0.95 699
+40						0.90 704
+60						0.85 709
+80						0.80 714

Sta	T	R	E	Grade	E.R.
79	487.94			480.75	7.19
+20				0.70	7.24
+40				0.65	7.29
+60				0.60	7.34
+80				0.55	7.39
80	6.68		480.50	480.50	7.44
+20	487.18	7.44		0.45	6.73
+40				0.40	6.78
+60				0.35	6.83
+80				0.30	6.88
81			480.25	480.25	6.93
+20				0.20	6.98
+40				0.15	7.03
+60				0.10	7.08
+80				0.05	7.13
82	2.91		480.00	480.00	7.18
+20	482.91	7.18		9.95	2.96
+40				9.90	3.01
+60				9.85	3.06
+80				9.80	3.11
83			479.75	479.75	3.16
+20				9.70	3.21
+40				9.65	3.26
+60				9.60	3.31
+80				9.55	3.36

82+70 Canyon c.l.

Sta	T	R	F	Grade	G.R.
84	6.83	3.36	479.55	479.50	6.88
+20				9.45	6.93
+40				9.40	6.98
+60				9.35	7.03
+80	3.56	7.03	479.35	9.30	3.61
85				479.25	3.66
+20				9.20	3.71
+40				9.15	3.76
+60				9.10	3.81
+80	4.08	3.81	479.10	9.05	4.13
86				479.00	4.18
+20				8.95	4.23
+40				8.90	4.28
+60				8.85	4.33
+80				8.80	4.38
87				478.75	4.43
+20				8.70	4.48
+40				8.65	4.53
+60				8.60	4.58
+80	5.50		478.55	8.55	4.63
88		4.63		478.50	5.55
+20				8.45	5.60
+40				8.40	5.65
+60				8.35	5.70
+80				8.30	5.75

84+95 Canyon c.l

Sta	+	T	-	R.	E	Grade	G.R.
89		484.05				478.25	5.80
+20						8.20	5.85
+40						8.15	5.90
+60						8.10	5.95
+80					478.05	8.05	6.00
90	5.61	483.66	6.00			478.00	5.66
+20						7.95	5.71
+40						7.90	5.76
+60						7.85	5.81
+80						7.80	5.86
91						477.75	5.91
+20	2.73	480.43	5.96		477.70	7.70	5.96
+40						7.65	2.78
+60						7.60	2.83
+80						7.55	2.88
92						477.50	2.93
+20						7.45	2.98
+40						7.40	3.03
+60						7.35	3.08
+80	4.67	481.97	3.13		477.30	7.30	3.13
93						477.25	4.72
+20						7.20	4.77
+40						7.15	4.82
+60	4.32	481.42	4.87		477.10	7.10	4.87
+80						7.05	4.37

Canon C.L.

Rain.

5:00 PM. Nov. 30 1912

9:00 AM. Nov 4th 1912

Cloudy and Cool

Sta	+	-	R	F	Grade	G.R.
94		481.42			477.00	4.42
+20					6.95	4.47
+40					6.90	4.52
+60					6.85	4.57
+80					6.80	4.62
95	2.83	479.58		476.75	476.75	4.67
+20					6.70	2.88
+40					6.65	2.93
+60					6.60	2.98
+80					6.55	3.03
96					476.50	3.08
+20					6.45	3.13
+40	4.42	480.82		476.40	6.40	3.18
+60					6.35	4.47
+80					6.30	4.52
97					476.25	4.57
+20					6.20	4.62
+40					6.15	4.67
+60					6.10	4.72
+80	7.47	483.52		476.05	6.05	4.77
98					476.00	7.52
+20					5.95	7.57
+40					5.90	7.62
+60					5.85	7.67
+80					5.80	7.72

Sta	+	X	-	R	F	Grade	G.R
99		483.52				475.75	7.77
+20						5.70	7.82
+40	6.23	481.88	7.87		475.65	5.65	7.87
+60						5.60	6.28
+80						5.55	6.33
100						475.50	6.38
+20						5.45	6.43
+40						5.40	6.48
+60						5.35	6.53
+80						5.30	6.58
101						475.25	6.63
+20						5.20	6.68
+40						5.15	6.73
+60						5.10	6.78
+80						5.05	6.83
102	5.84	480.89	6.83		475.05	4.75	5.89
+20						4.95	5.94
+40						4.90	5.99
+60						4.85	6.04
+80						4.80	6.09
103						474.75	6.14
+20						4.70	6.19
+40						4.65	6.24
+60						4.60	6.29
+80						4.55	6.34

Sta	t	T	R	E	Grade	G.R
104	6.72	480.89 +81.27	6.34	474.53	474.50	6.77
t20					445	6.82
t40					440	6.87
t60					435	6.92
t80					430	6.97
105					474.25	7.02
t20					420	7.07
t40					415	7.12
t60					410	7.17
t80					405	7.22
106	1.31	475.31	7.27	474.00	474.00	7.27
t20					395	1.36
t40					390	1.41
t60					385	1.46
t80					380	1.51
107					473.75	1.56
t20					370	1.61
107 t40					365	1.66
B.M.			4.75	470.56	365	1.66
t20					360	
t40					355	
t60					350	
t80					345	

3.15

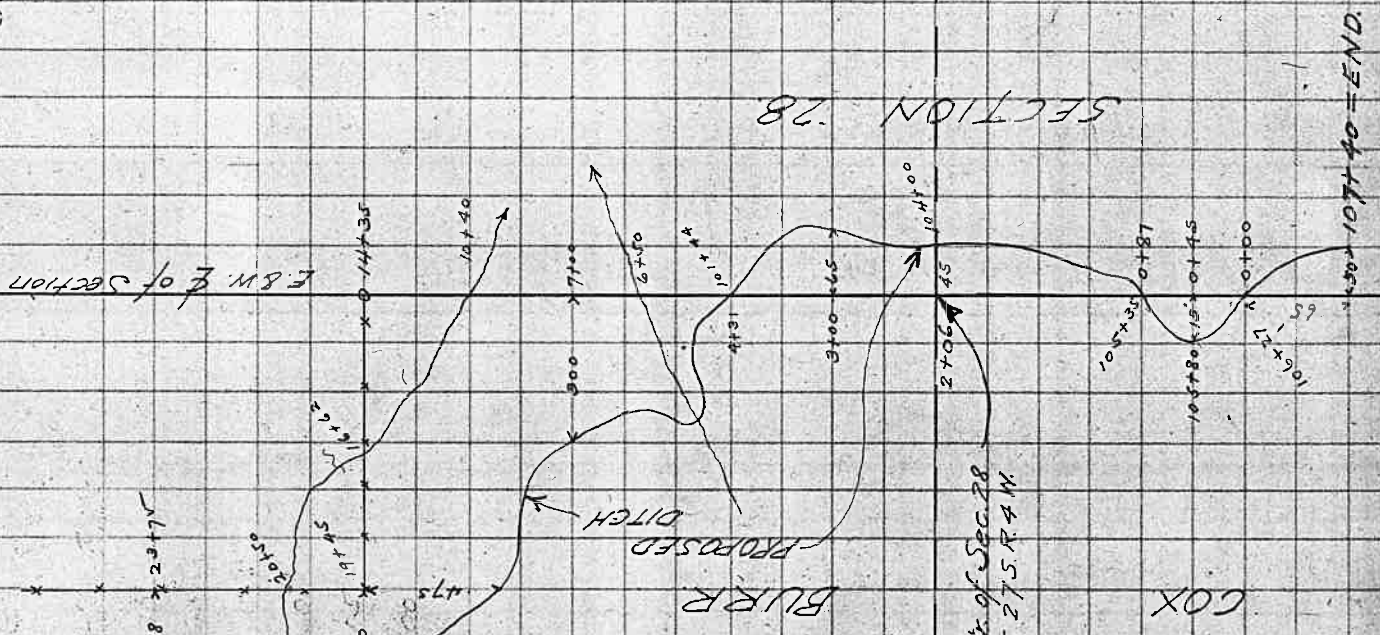
On W Oak 8" diam. near Sta 107 t40
1:00 P.M. Nov. 4th, 1912

End

BINECREST IRRIGATION DITCH

Notes to locate line of ditch.

Nov 4th 1912



0+00 = Intersection of E of Ditch and E & W of Section 28, T. 27 S. R. 4 W.

SECTION 28

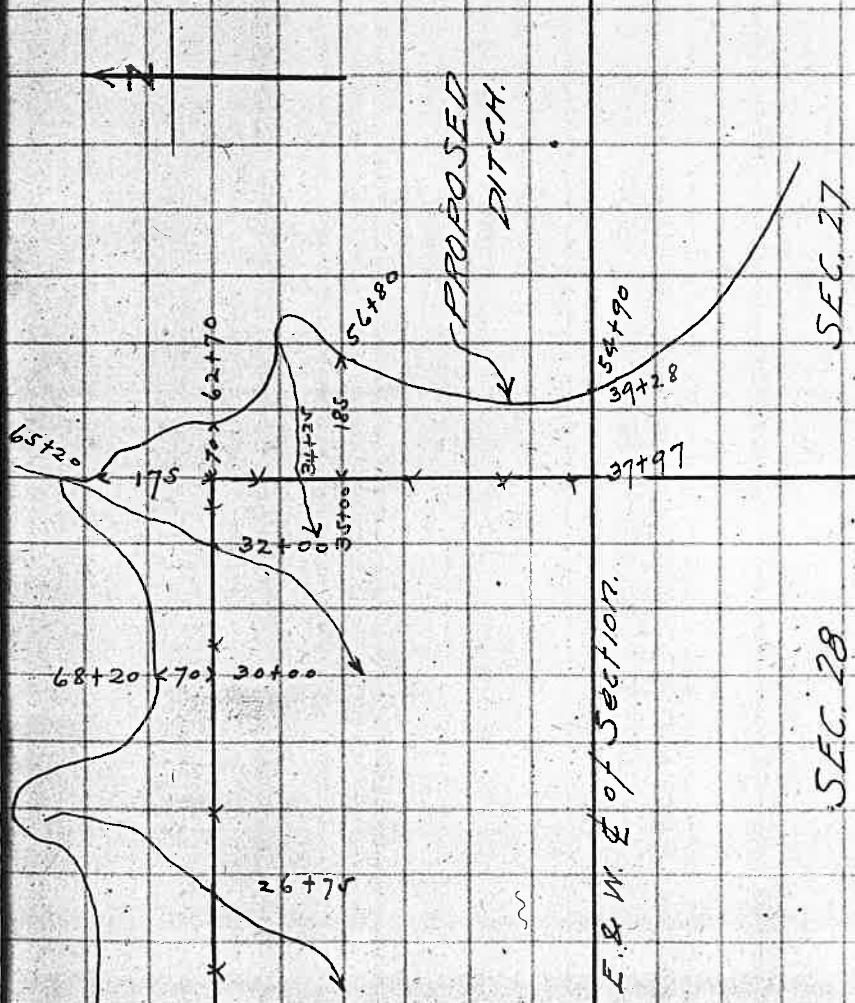
E. & W. of Section

City of Sec. 28
T. 27 S. R. 4 W.

COX

BURR
PROPOSED
DITCH

10+30 = 107+40 = END



SEC. 27

SEC. 28

E. & W. L. of SECTION.

PROPOSED DITCH.

Drainage - Overland Orchards

Sta	+	R	E	Grade	Cut
Branch No. 1					
0	104.70	4.7	100.00	95.00	2.00
+90		4.5	100.20	97.50	2.65
+175		5.52	99.18	97.12	2.06
					2' 0"
					-2' 8"
					2' 0 3/4"
Main Ditch (West)					
0	5.75	5.75	99.18	97.12	2.06
+100		4.48	100.45	98.26	2.19
+150		3.70	101.23	99.11	2.12
					2' 1/2"
Main Ditch (East)					
0	5.41	5.41	99.18	97.12	2.06
+760		6.22	98.37	96.37	2.00
					2' 0"
					= 0 + 100 of No. 2.
+60	3.24	3.24	97.37	96.37	2.00
+60		5.24	96.37	94.37	2.00
+70		11.42	90.19	88.19	2.00
					2' 0"
		11.42	90.19		

Sta	T	-	R	E	Grade	Cut
North Ditch						
0	3.57		3.57	100.00	98.00	2.00 2-0
1+00			4.38	99.19	97.00	2.19 2-2 1/4
+70			4.78	98.79	96.30	2.49 2-6
3+00	2.74	4.78		98.79		
3+50			4.41	97.12	95.00	2.12 2-1 1/2
4+00			4.81	96.72	94.50	2.22 2-2 1/2
4+60		4.81		96.72		
4+85			4.79	95.94	93.15	2.79 2-9 1/2
SOUTH WEST Ditch						
0+00	1.55		1.55	100.55	98.50	2.05 2-0 1/2
3+30			4.30	97.25	95.20	2.05 2-0 1/2
7+35			4.87	96.68	94.00	2.68 2-8 1/4
		4.87				
SPRING DITCH #2						
0	6.56			87.96	87.41	2.55 2-6 1/2
1+27			4.39	92.13	89.95	2.18 2-2 1/4
2+50			1.56	94.96	92.41	2.55 2-6 1/2

= 4+90 of #1

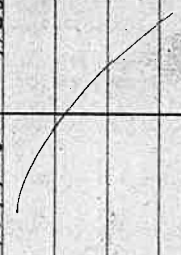
= 4+30 of #2

0029

Sta	+	T	-	R	E	Grade	Cut	=
Spring Ditch #1								
0	1.34	101.34		4.34	100.00	97.87	2.13	2 - 1/2"
1+80				4.52	96.82	93.91	2.91	2 - 11"
4+30				11.38	89.96	87.41	2.55	2 - 6 1/2" = 0.400 of #2
4+90	6.56	96.52	11.38	7.75	88.77	86.09	2.68	2 - 8 1/4" = 7+35 of S.W. Ditch
7+60	2.62	91.39	7.75	7.16	88.77			
8+02				7.16	84.23	82.31	1.92	1 - 11"
+	1.16	85.39	7.16	84.23				
10+26				4.21	81.18	79.67	2.52	2 - 6 3/4"
11+66				5.44	79.95	77.58	2.37	2 - 4 1/2"
12+81	3.59	83.54	5.44	79.95				
16+38				4.56	78.97	76.75	2.23	2 - 3 3/4"
17+84	4.20	79.18	7.96	79.58	73.50	2.08	2 - 1"	
19+10				4.56	75.22	73.28	2.00	2 - 0"
21+10				4.40	75.38	73.04	2.34	2 - 4" Edge Gr. Road Ditch
22+00				6.13	73.65			
				6.40	73.38			
				6.60	73.18			
				7.20	72.58			
				6.90	72.88			
19+48	5.49	80.87	4.40	4.70	76.17	73.00	3.17	3 - 2"
20+20				6.25	74.62	72.76	1.86	1 - 8"
21+20				6.93	73.94	72.45	1.49	1 - 6"
22+00				7.57	73.30	74.20	1.10	1 - 1"
Bottom of Road Ditch								
Bottom of Road Ditch Culvert								
Bottom of Culvert								

Sta	T	R	E	Grade	Cut	
South Ditch						
0	5.51	5.51	75.58	73.50	2.08	2'-1"
3+75	6π	4.60	76.49	73.87	2.64	2'-2 1/2"
7+20		4.43	76.66	74.22	2.44	2'-5 1/4"
9+85	4'	4.45	77.48	75.28	2.20	2'-2 1/4"
11+30		3.89	78.04	75.84	2.20	2'-2 1/4"
Bottom Ditch						
0	5.02	105.02	100.00	98.00	2.00	2'-0"
2+90		4.30	100.72	97.13	3.59	3'-7"
4+45		6.71	98.81	91.30	2.01	2'-0"
8+21	0		98.31			
7+96		6.71	97.69	95.54	2.15	2'-2"
11+09	3.87	101.56	97.69			
12+50		4.34	97.22	94.67	2.55	2'-6 1/2"
		5.02	96.54	94.25	2.29	2'-3 1/2"

= 16+38 of Spring #1



Survey for Janssen, Evirt & Morris

T. 24 S. R. 5 N.

Begin at S.W. cor. J. Tibbits & L.C.

#40 (S.W. cor. of Sec. 34.)

Thence East on Twp Line

589.45' E

18.72

To H.M. Everts ~~at~~ S.E. cor. = S.W. Cor.

28.72

To S.E. cor. Morris & S.W. cor. Janssen

38.72

To Temporary Stake.

42.87

Set Stake Marked C. 40 C.S.B.T.

also marked a fir 12" diam. bears N. 86° 45' E 1441ks

(1111
1295.5')

(660.0)

1777

1262

T. 28 S R. 6 W.

Survey for J. L. Boggs.

From Pt. on E of R.R. (F.S. N. $17^{\circ}03'E$
 $94^{\circ}30'R$.

Bearing to pt. 3 ft. North from N.W.
corner of G.W. Smith Cl. $568^{\circ}27'W$

Begin at N.W. Cor. Smith Cl.

Offset 3' North. Thence

East \leftarrow ^{on Random} On North Boundary of Smith Cl.

1320

To Sec Line between Secs. 11 and 12

Offset 3 ft. South to N. Line of Smith Cl.

North

Between 11 and 12 (on Random)

387.4

to cor. Sections 1, 2, 11 and 12

Thence $S. 64^{\circ}E. 821.7$

$N 58^{\circ}15'E 43.5$ to B.T. in Sec 12

Re established Cor. to Secs 1, 2, 11 & 12

$N 0^{\circ}48'W$. Between Sections 1 & 2

780

Branch e. W.

2640 - 2638 Set Temporary $\frac{1}{4}$ Cor.

3960 - 3949# " " $\frac{1}{16}$ v

4860

Offset. $74.6' N. 89^{\circ}12'E$.

5254

To W.C. between Secs 1 & 2 on N. Bdy T Line

0032 32

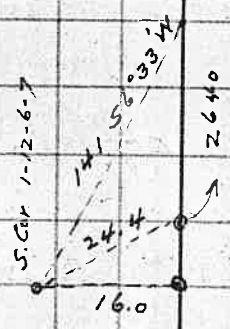
$$\begin{array}{r} 85035 \\ \underline{435} \\ 425175 \\ \underline{255105} \\ 340140 \\ \underline{36990225} \quad E \end{array}$$
$$\begin{array}{r} 526214 \\ \underline{435} \\ 2651070 \\ \underline{1578642} \\ 2104856 \\ \underline{228903090} \quad N \end{array}$$

.
 Begin at $\frac{1}{4}$ S. Cor. bet. Secs 1 & 2.
 East.
 1320 Set Stake
 2192 Creek c. South.
 2640 Set Stake
 3960 " "
 5338 Intersect ~~Ridge~~ line 12.7 ft. South from
 $\frac{1}{4}$ S. Cor. between Secs 1 & 6

Begin at $\frac{1}{4}$ S. Cor. between Secs 1 and 6
 R. 6 W and R. 5 W
 South On Random between Secs 1 and 6
 1320 Set Stake
 1650 Top of Ridge.
 2207 Fence S.W. & N.E.
 2220 Stake.
 2640 Point 18.0' North and 16.0' East of Cor
 to Secs 1-12-6-7 T28S. R. 5 & 6 W.

Begin at Cor. to Secs 1, 12-6-7
 589°51' W Between Secs 1 and 12
 346 To Line between Smith and Boggs

$$\begin{array}{r} 114095 \\ 16 \\ \hline 684570 \\ 114095 \\ \hline 1825520 \end{array}$$



$$\begin{array}{r} .11407 \\ 141 \\ \hline 11407 \\ 45638 \\ 11407 \\ \hline 24.4 \overline{) 16.08387} \quad | .65917 \\ \underline{1464} \\ 1443 \\ \underline{1220} \\ 2238 \\ \underline{2196} \\ 427 \\ \underline{244} \\ 1830 \end{array}$$

South. : Begin at Corner to Secs 1-6-7-12
401.0 On Random between Secs 7 and 12
to Point $545^{\circ} E$. 8 ft from N.E
Cor. of Cl. 43.

589°55' W. Begin at N.E. Cor. Cl. 43
653.7 On North Line of Cl. 43
To Fence Cor. Boggs - ~~Smith~~ - Miller
S.E. Cor. of J. L. Boggs.

North Begin at $\frac{1}{4}$ S. Cor. between Secs 1 and
442 Twp 28 S., R. 5. 6 and 5 W.
Between Secs 1 and 6.
To Division Fence between J. L. Boggs
and Boggs.

589°28' W Along Fence, offset 3' South.
3603 (?) To Fence Corner, Offset 10' North
(N13°26' W To N.E. cor S.W.⁴ of N.W.⁴ Sec 1.)

954.5
589°28' W Across S.W.⁴ of N.W.⁴ of Sec 1
1779
391.5 ft N48' W from $\frac{1}{4}$ S. Cor.

0034

34

401

N 44° 23' W

2000
11.6
1988.4

Begin at $\frac{1}{4}$ S. Cor on W Line of
Sec. 6 T. 28 S. R. 5 W.

East Offset 12.7 ft South.

160 " 2.5 " North

375 Begin to Ascend

1988th To Pt. 12⁶ ft. South from Corner

1990 Top of Ridge N.E. and S.W.

2640 Set Stake Approx. Ctr. Sec 6.

North On E Bay N.W.th of Sec 6

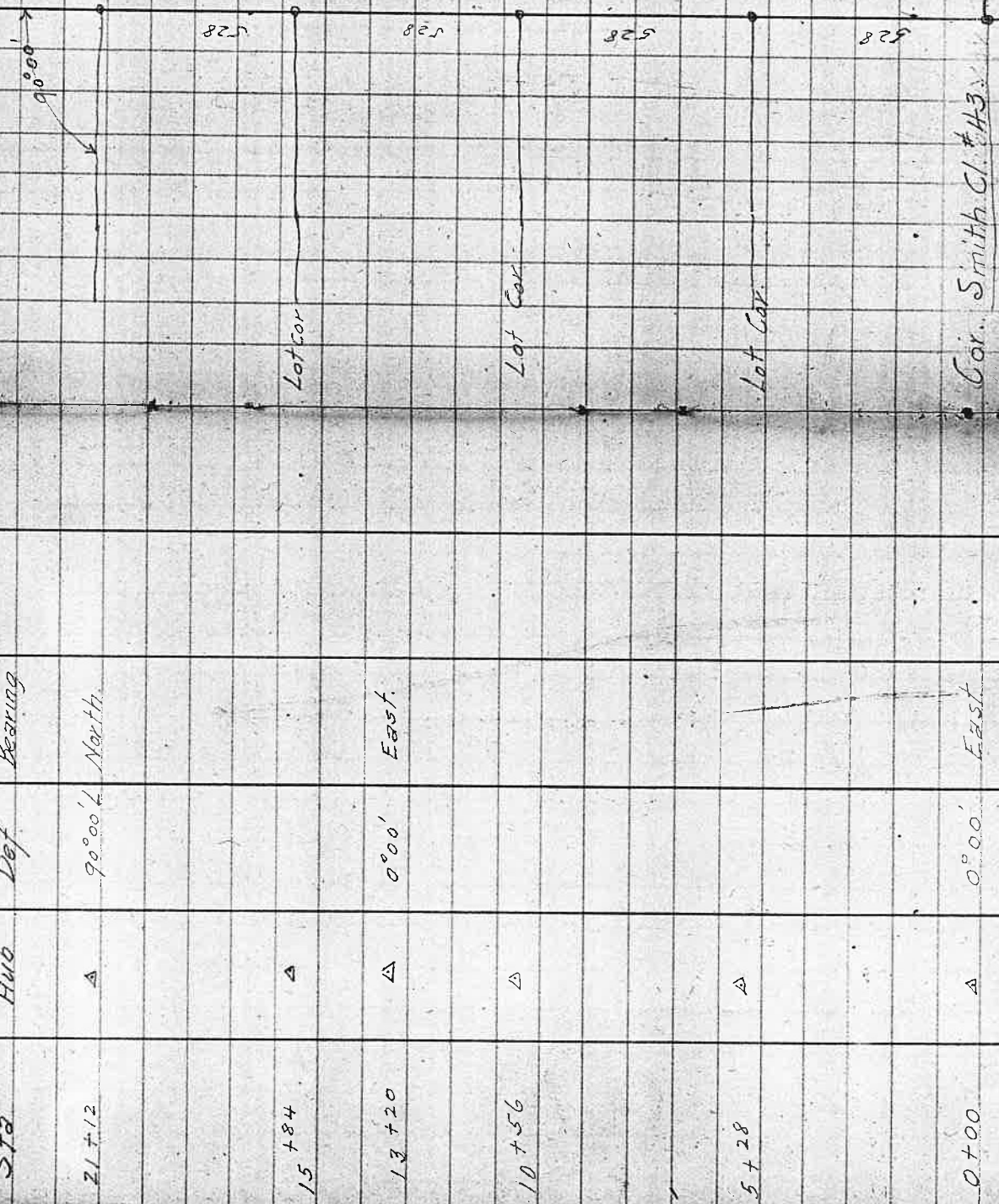
477 To Fence N.E. Cor. J. L. Bogg's Land

35

0035

Survey for Mrs L. O. Maddux
 Sta Hub Def Bearing

Dec. 9th 1912



90°00' R East.

38 + 28

△

Lot Cor R

37 + 62

△

Lot Cor L

33 + 00

△

Lot Cor R

29 + 37

△

Lot Cor L

27 + 72

△

Lot Cor R

21 + 12

△

528

825

528

825

825
660



38
0038



58 + 53 A

54 + 53 A

50 + 53 A

46 + 53 A

46473
ROAD

Survey for Clay Smith.

Begin at Stake marked R.C.S.

10.7 ft. South of 1/4 Sec. cor

between Secs 15 & 14 T. 28 S. R. 6 W.

1 run E of Road 40' wide

offset 10' South.

Dec. 13th 1912.

- N. 89° 00' E 568.3
- S. 57° 05' E 1046.0
- S. 3° 14' R 298.6
- S. 53° 51' E 70.8
- S. 15° 08' R 119.0
- S. 38° 43' E 75° 13' R
- S. 36° 30' W 69° 12' L
- S. 32° 42' E 36.0
- 110° 00' L
- N. 37° 18' E 125.5

To Ctr of Road W. End of Winston Brg

To Ctr of W. Pier of Bridge

L. Bank of S. Unipaque River.

Corrected line for 1/2 of Roadway.

- N. 89° E 576.2
- S. 57° E 1049.2
- S. 53° 51' E 300.2
- S. 38° 43' E 78.8
- S. 36° 30' W 119.8
- S. 37° 42' E 25.5
- N. 37° 18' E 114.9

To Ctr of Road W. End of Brg.

To Ctr of W. Pier of Winston Brg

On L. Bank S. Unipaque River

Jan - 1913

Survey for F.C. Alten

Beginning at N.W. Cor of John M Scott D.L.C. TP 22 S R 4 W
an run a line East to N.W. Cor. Established by original plat.
This line is a mark for a new BT, a small 27" S 65° E 394.85 ft,
marked C37 B.T.C.S.

Jan 8 Begin at S.E. cor Sec 31 TP 22 S R 4 W and run a random line
North a distance of 1/4 post or sec' cor, BT's destroyed
I continue on North to 1/4 sec post bet secs 29 + 30 pres. standing
Established by Thiel and correct, intersect 532' East of cor.
Set points in North Line of John M Scott Cl. also set Correction
points for Sec. Line between Secs 31 & 32. Produce both lines
to intersection and set Stake from which

A White Oak 10" diam bears S 46° 23' E 87.1 feet marked C.S.B.T.
A Chitara 9" " S 77° 21' W 22.0 " " C.S.B.T.

Thence I run South 1981.5 ft and intersect at S.E. Cor of Sec 31.

Jan 10 Begin at S.E. cor. Sec. 31 I run North

at 1060.2 ft set cor. between F.C. Alten and E.P. Drew from which
a White Oak 10" diam marked C.S.B.T. bears N 41° 45' W 144 ft.
a " 8" " N 61° 18' E 22.1 ft.

16.00
2990.

at 1076.7 ft Intersect fence. 803 ft West from Corner Set by Thiel.
at 1981.5 " North Line of John M Scott D.L.C. 82.2 ft west from
corner set by Thiel.

Survey for L. W. Wise.
Begin at N. E. cor. of Tract.

West 2199.5 ft.

South 3025.8 "

East 2218.0 "

5

0041 41

Survey for D. Waite & W.H. Rose.
Begin

50°45' E. On Random.

20.00 set stake.

Replaced $\frac{1}{16}$ cor.

5.66 $\frac{1}{2}$ ° E 35 $\frac{1}{15}$ to $\frac{1}{16}$ cor.

Begin at $\frac{1}{16}$ cor.

545° E On Random.

28.62 To Stake

52 $\frac{1}{4}$ ° E 25 $\frac{1}{15}$ to $\frac{1}{16}$ cor.

25.00 21.8 $\frac{1}{15}$ ✓ ✓

20.00 17.5 ✓ ✓ ✓

15.00 13.1 ✓ ✓

10.00 18.75 ✓

5.00 4.35 ✓

0042

42

Survey for W. Single Ton.

Begin at $\frac{1}{4}$ S cor bet Sec 3 + 4 T27 RRW.
 S89 $\frac{1}{4}$ °W.

20.00

31.00 Set Stake NW Cor C/ 41. 2.00 chns S.

South 38.50 to cor. 798 chains

East of $\frac{1}{4}$ S cor bet Secs 4 + 9.

Set Stake Marked G41 - L754

from which 2 Fir Marked L75

and 3 " " L25

41 $\frac{1}{2}$

- 12.59

4 BTCS (14") N 2° E

9 BTCS (14") S 70° E

18 $\frac{1}{2}$ K5

25 $\frac{1}{2}$ K5

NW Cor C/ 41 set Stake

on Ash 8" diam. Marked C

41 CSBT N87 $\frac{1}{2}$ ° W.

52 K5

ESE. Cor. Lot 6 - Stake.

B.O. 14 Marked CSBT

N17 $\frac{3}{4}$ ° E 35 $\frac{1}{2}$ K5.

NE Cor. Lot 6 - Stake

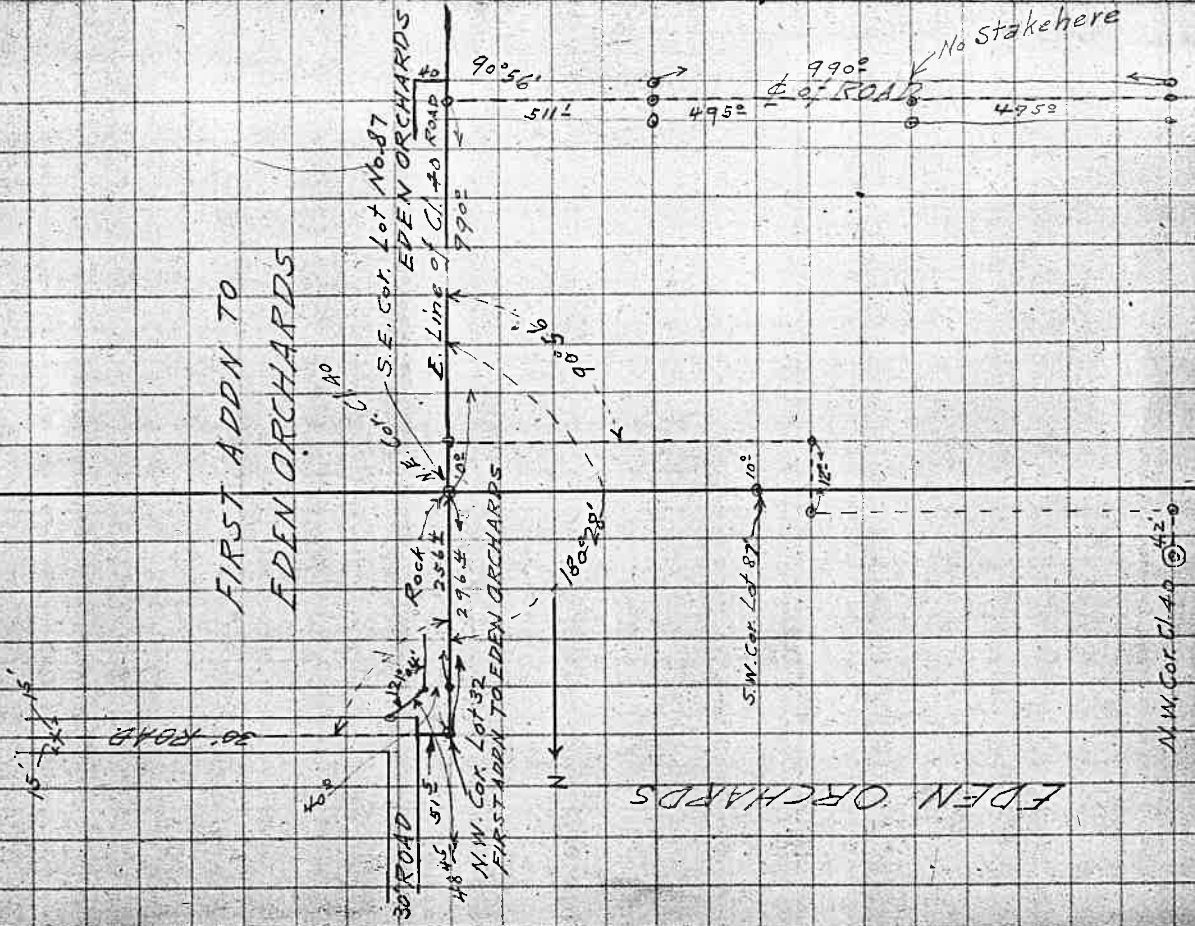
B.O. 12 Marked CSBT N33° W

83 $\frac{1}{2}$ K5

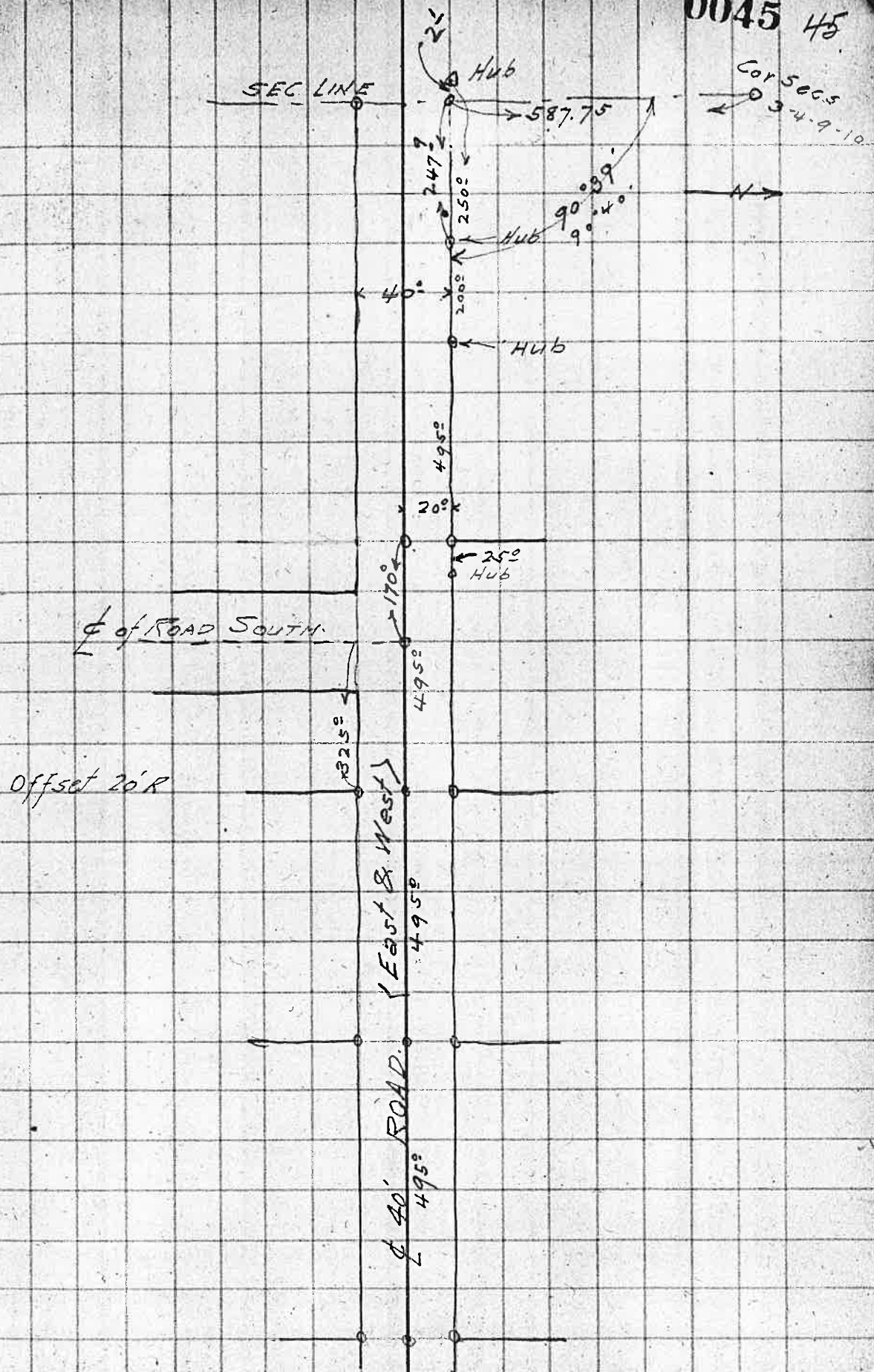
Survey for J. Doerner.

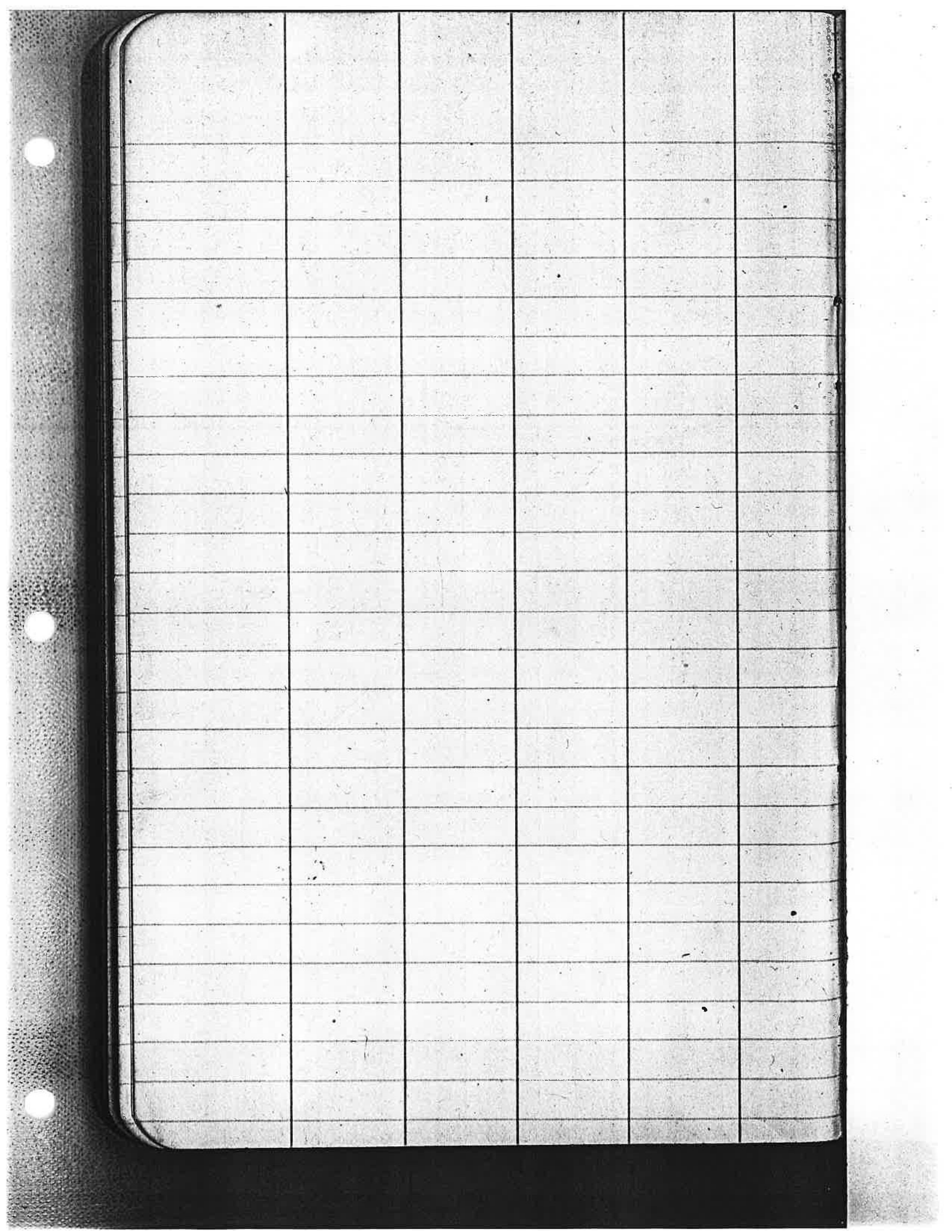
John Doerner
Lizzie Doerner

0044 44.



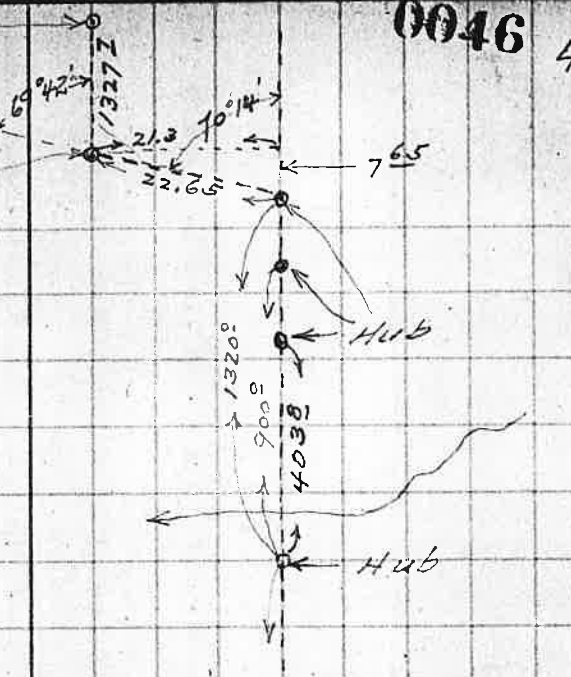
0045 45





SW Cor Lot 5

Sec Cor Rock

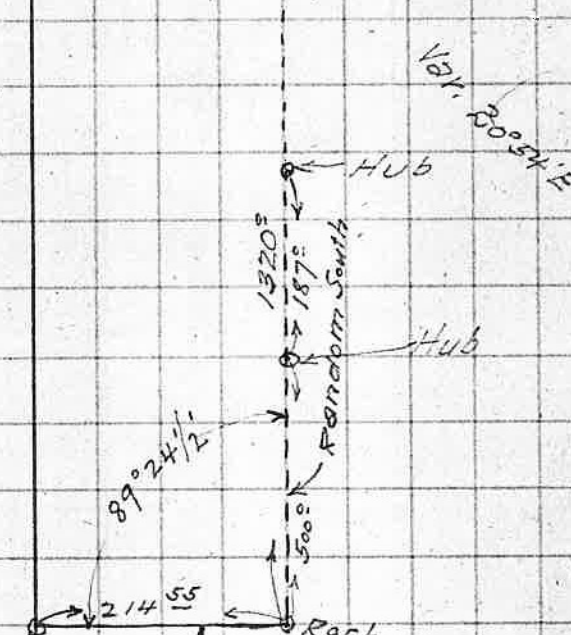


Var. 20° 54' E

N.E. Cor Lot 7 SEC 10

Rock

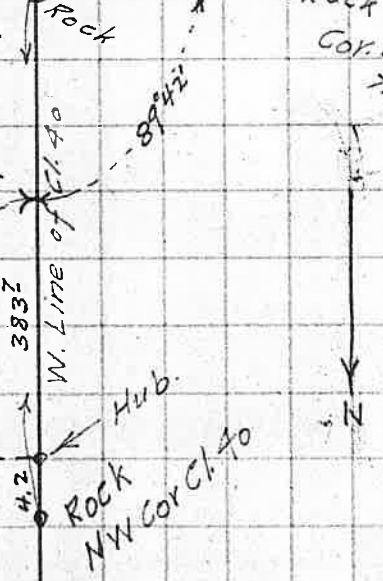
Cor. 58CS. 3-4-9-10
T. 27 S. R. 7 W.



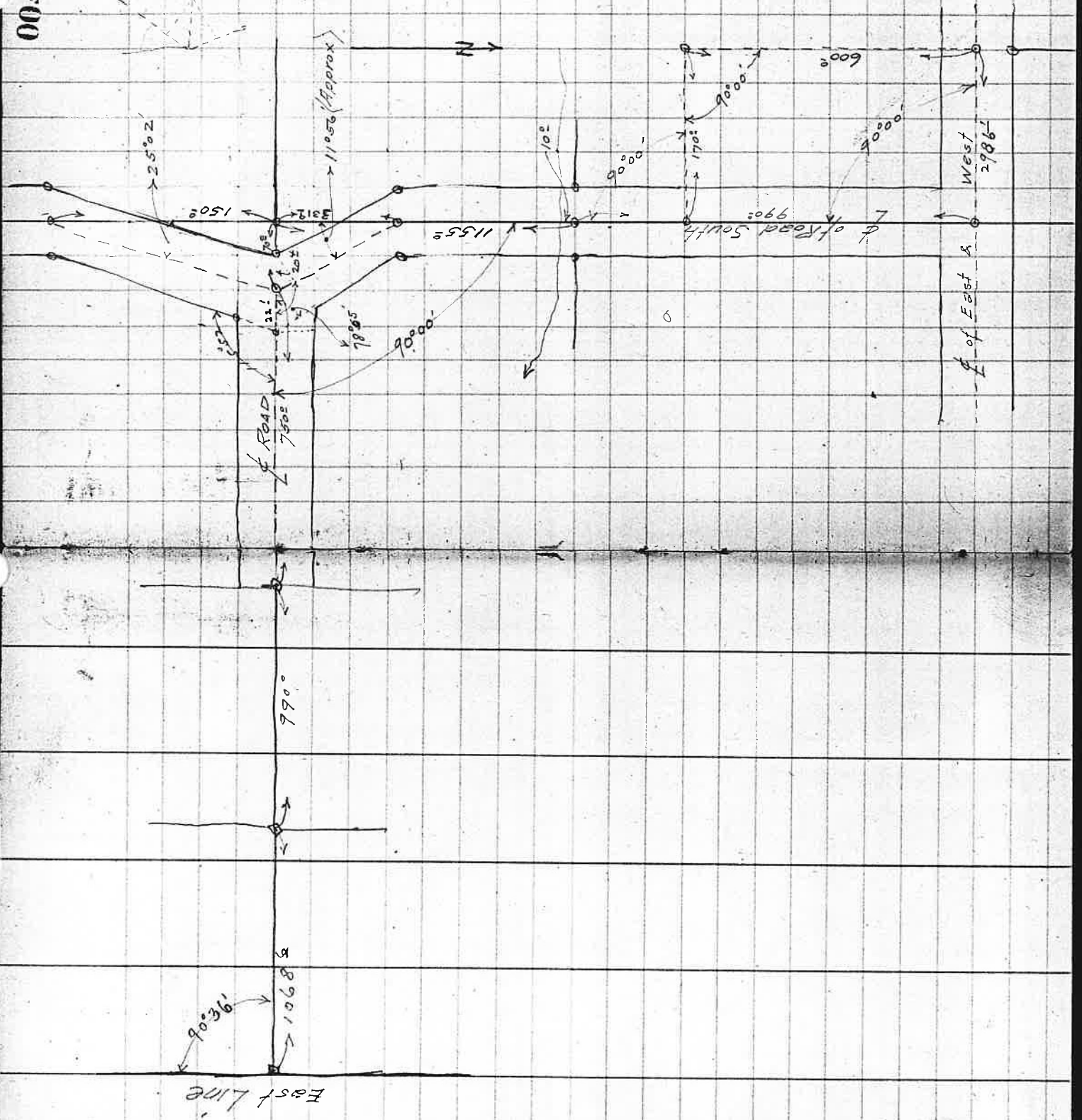
90° 07 1/2'

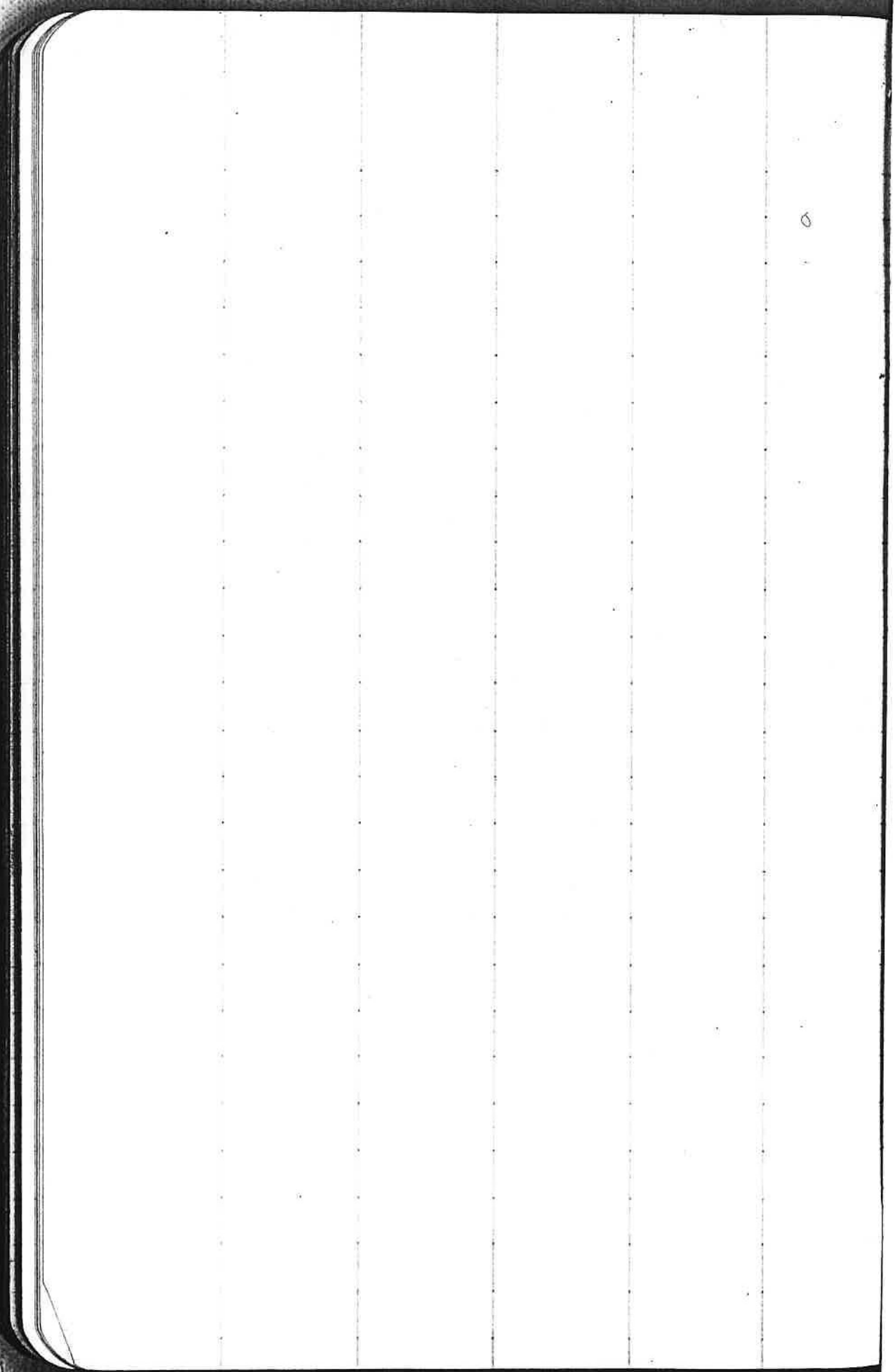
W. Line of Cl. 40

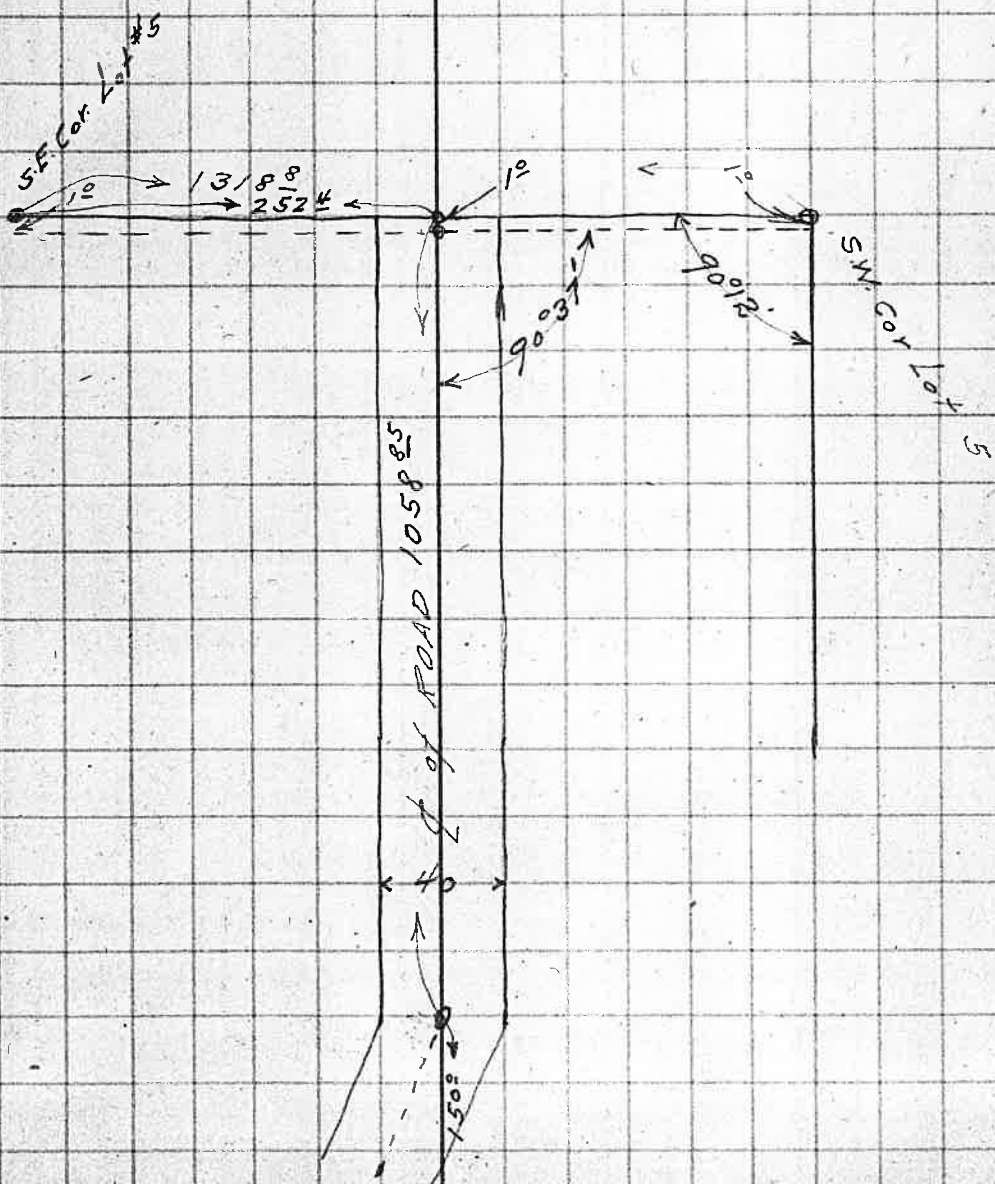
Offset Line from N.E. Cor Cl. 40



Rock NW Cor Cl. 40







820
252.4

567.6

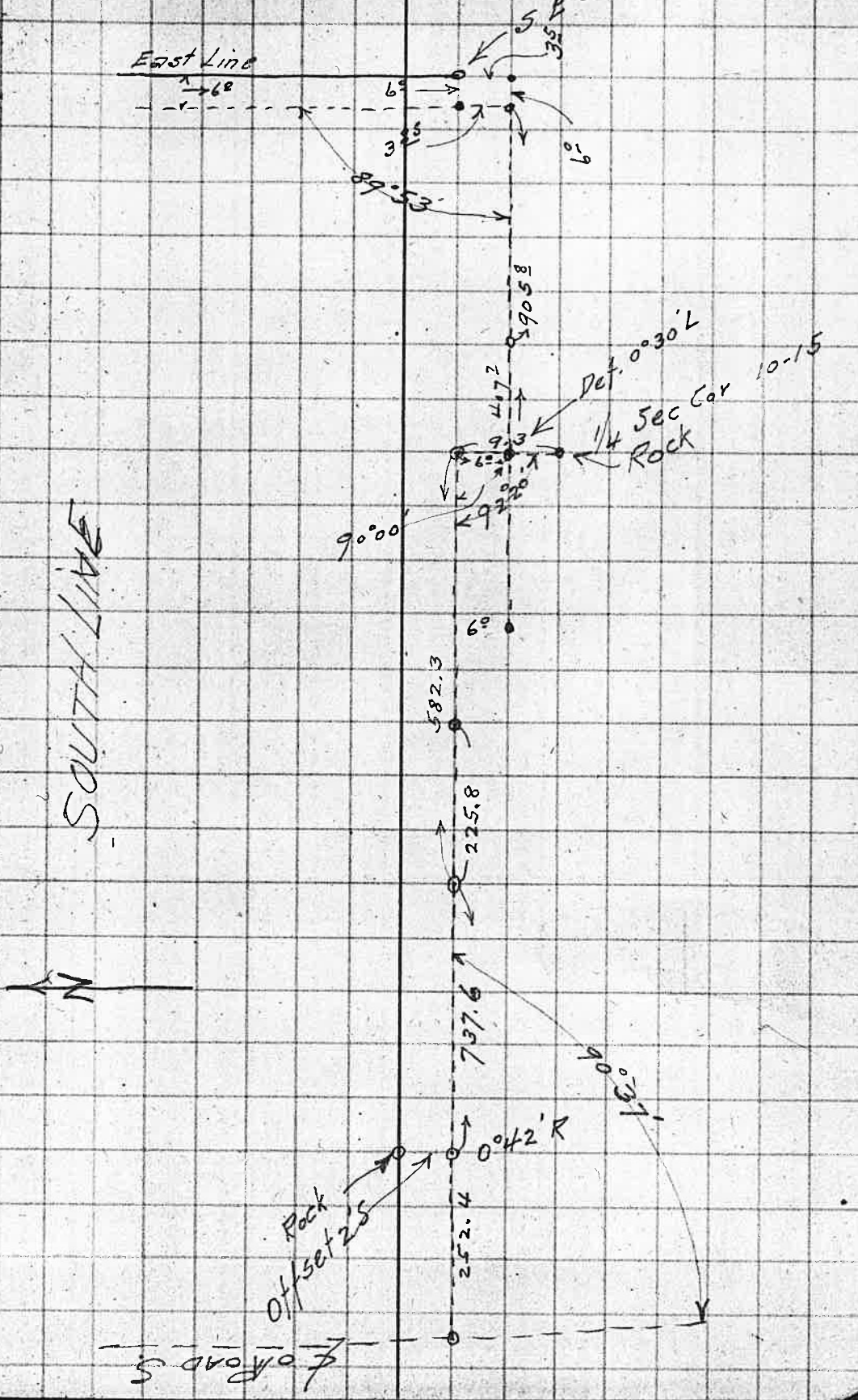
1320
567.6

752.4
990

237.6
170

0050

50



SOUTH LINE

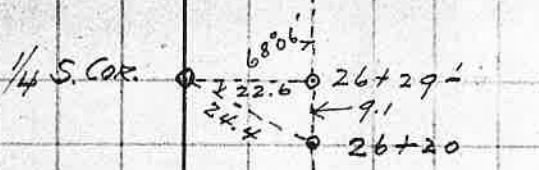


Road S

$$39.70 = 2620.2$$

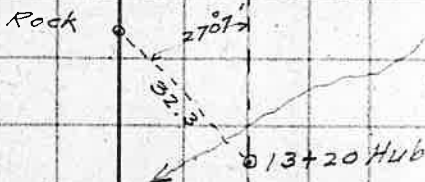
$$19.85 = 1310.1$$

$$\begin{array}{r} 8401 \\ \underline{32.3} \\ 26703 \\ \underline{17802} \\ 26703 \\ \underline{28.75023} \end{array}$$



24+68² Hub

19+80 Hub



1/16 SEC. COR. 16³ -> 13+14⁶

SEC 9

SEC 4

6+60 Hub

589°56'W

89°27'

Random South
Between SECS 9-10
Cor. SECS 3-4-9-10

Note: - Assume Random South
has bearing 5.0°29'W

$$\begin{array}{r} 6+60 \\ 6+16.6 \\ \hline 43.4 \end{array}$$

$$\begin{array}{r} 1320 \\ 26.5 \\ 3916.6 \\ \hline 5263.1 \end{array}$$

-17

$$\begin{array}{r} 1346.5 \\ 660 \\ \hline 686.5 \\ 43.4 \\ \hline 643 \\ 17 \\ \hline 660 \end{array}$$

$$\begin{array}{r} 39+16.6 \\ 43.4 \\ \hline 3960 \end{array}$$

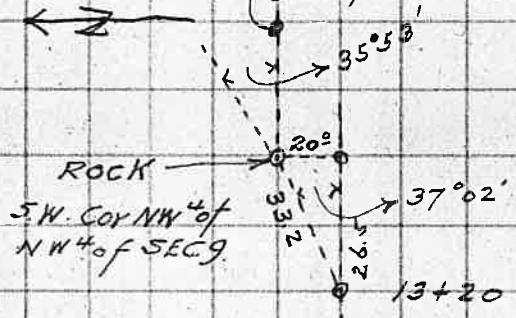
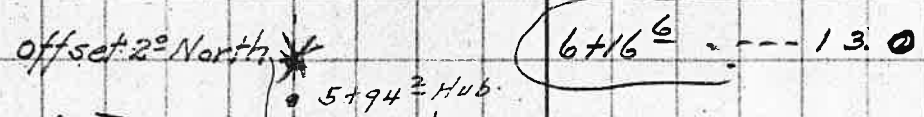
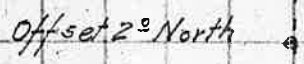
$$\begin{array}{r} 643 \\ 660 \\ \hline 1303 \\ 1346.5 \\ \hline 2649.5 \end{array}$$

$$\begin{array}{r} 643 \\ 2 \\ \hline 12.86 \\ 5.00 \\ \hline 7.86 \\ 21 \\ \hline 5.86 \end{array}$$

to 5. Line of Tract.
" " " " " "



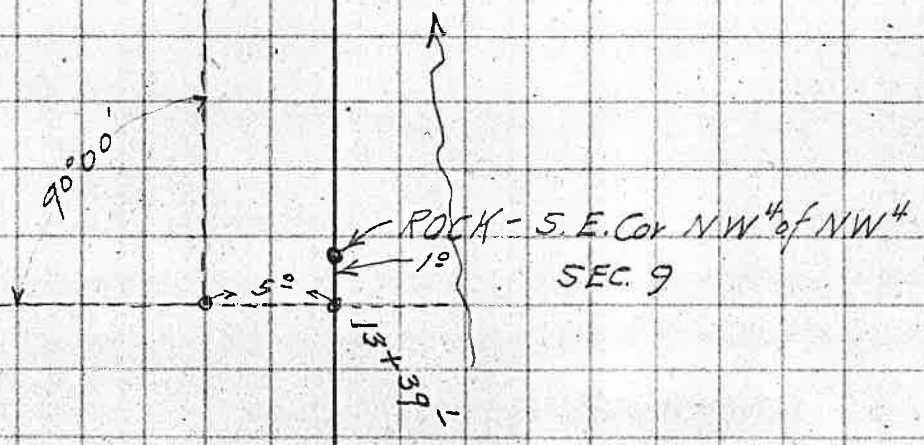
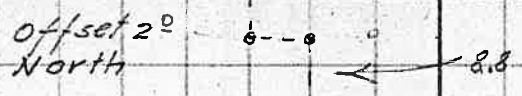
2.11 ft per 100' to South.

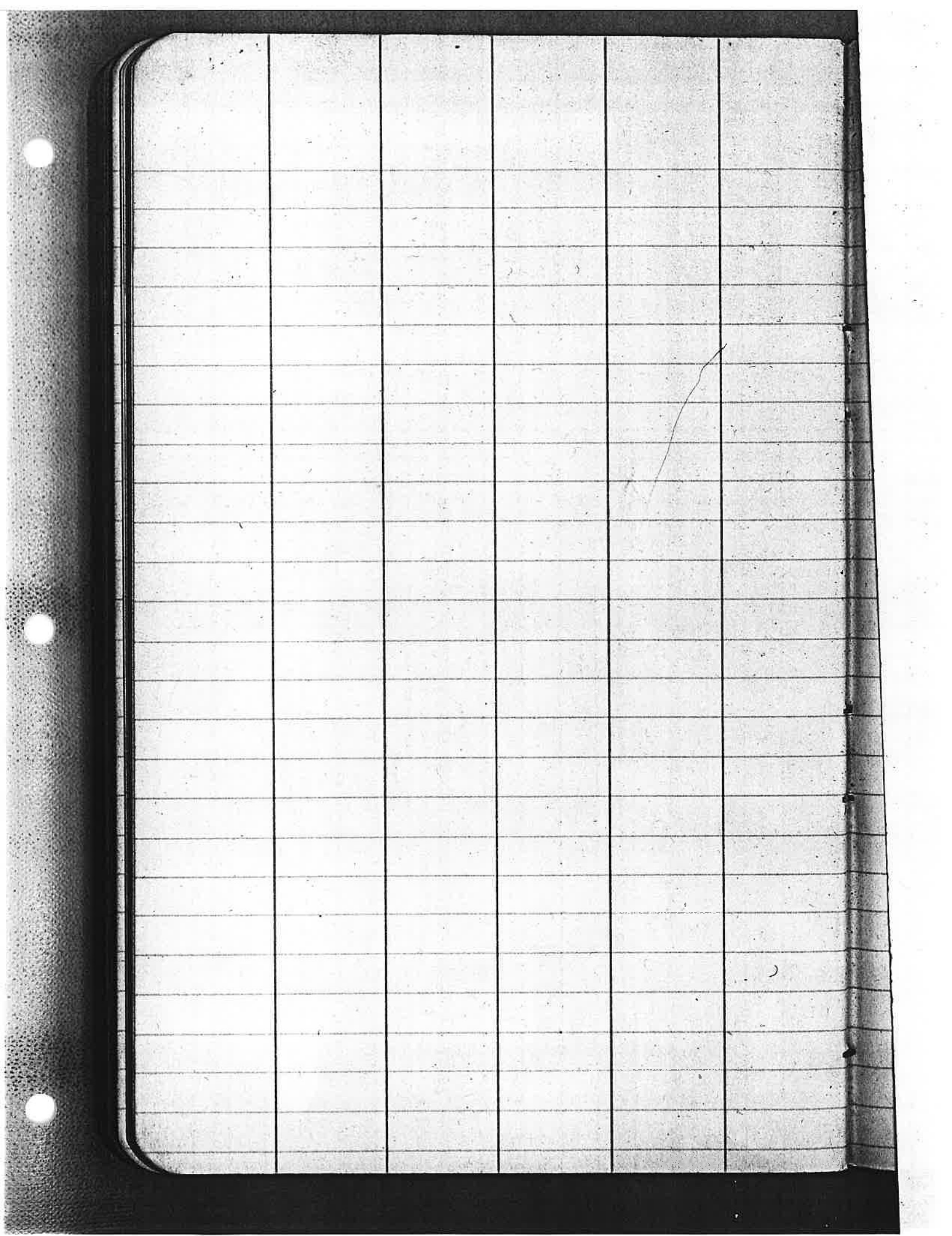


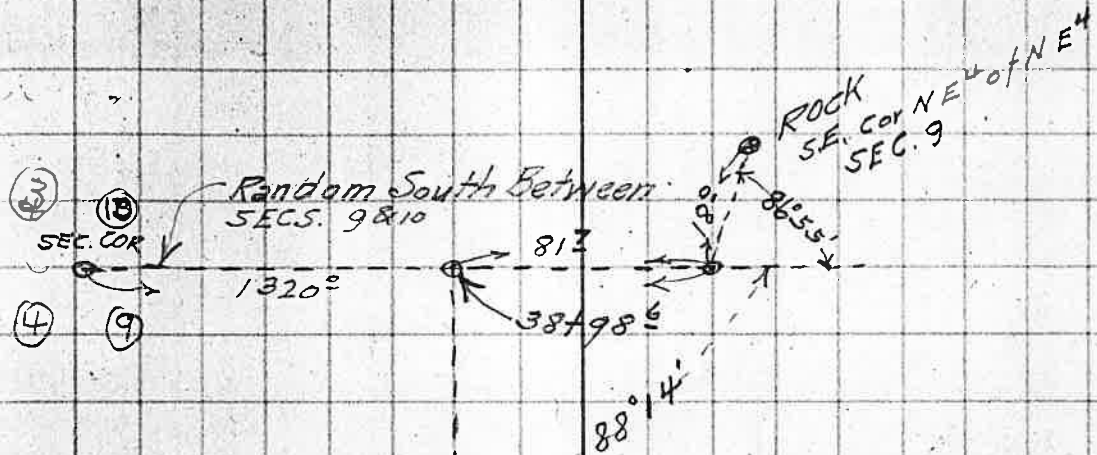
6.60
 13.20
 20

 6.80

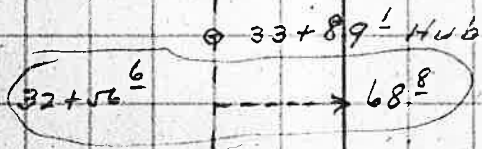
2.00' / 100







← N



39+16.6
6 60
32+56.6
6+60
25+96.6
6+60
19+36.6
6 60
12+76.6
6+60
6+16.6

offset 2° South 29+32.1 Hub - Root W Fir.



40° 12'
79° 02'

4823
37.500
29469
80310
18584
17260
38.2

20.3
20.6
19.95

40° 35'

7595 | 40.000
37975
20250
15190
50600
45570
50300

52.6

26.3

X - 40
80° 24
=

X
82.7
3916.6
3916.6

40 * 100 = 4002'

180
81
9849
4925

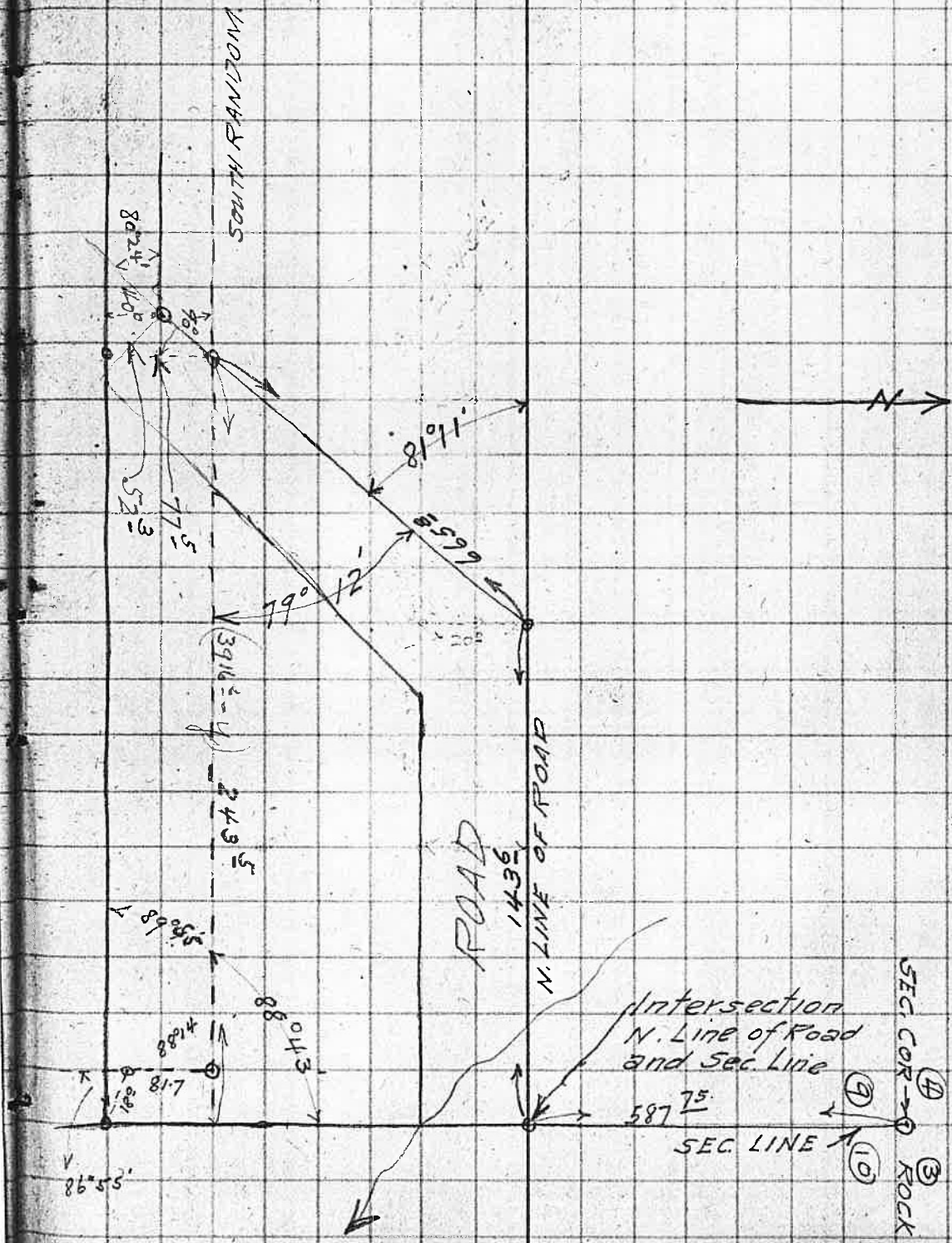
3916.6
293848
296033
274163
218710
30376537
174382

3916.6
243.5
3673.1
82.7

77.5
40
37.5

7638
40.0000
38190
18100
15276
28240
52.3

$$\begin{array}{r} 180.44 \\ 80 \\ \hline 2) 99.26 \\ 49.48 \end{array}$$



Field Book No. 30

Pages 55A -67 Blank

3916.6

82.7000
78332

43680
39166
4440

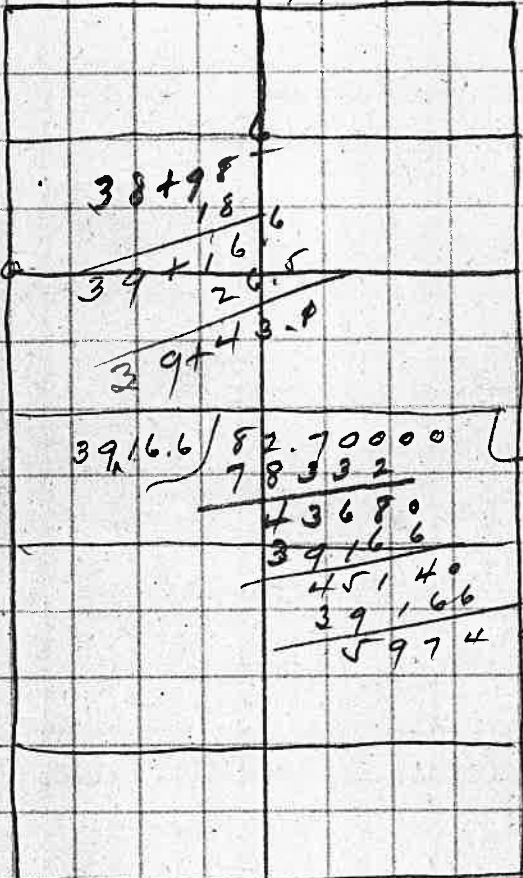
.0211

0068 68.8

B0 24" D41°E 141

$$\begin{array}{r}
 82.7 \\
 13.9 \\
 \hline
 68.8 \\
 13.9 \\
 \hline
 54.9
 \end{array}$$

$$\begin{array}{r}
 99855 \\
 18 \\
 \hline
 798840 \\
 99855 \\
 \hline
 1797390
 \end{array}$$

$$\begin{array}{r}
 05379 \\
 18 \\
 \hline
 43032 \\
 5379 \\
 \hline
 96822
 \end{array}$$


$$\begin{array}{r}
 82.7 \\
 21.1 \\
 \hline
 6.6 \\
 12.66 \\
 12.66 \\
 \hline
 13.926
 \end{array}$$

$$\begin{array}{r}
 39.16.6 \overline{) 82.70000} \quad \left(\frac{2.11}{100} \right) \\
 \underline{78.332} \\
 43680 \\
 \underline{39.16.6} \\
 451.40 \\
 \underline{39.16.6} \\
 59740
 \end{array}$$

$$\begin{array}{r}
 1320 \\
 26 \\
 \hline
 1346.5
 \end{array}$$

$$\begin{array}{r}
 1345.5 \overline{) 27.000} \quad \left(2.006 \right) \\
 \underline{26910} \\
 90000
 \end{array}$$

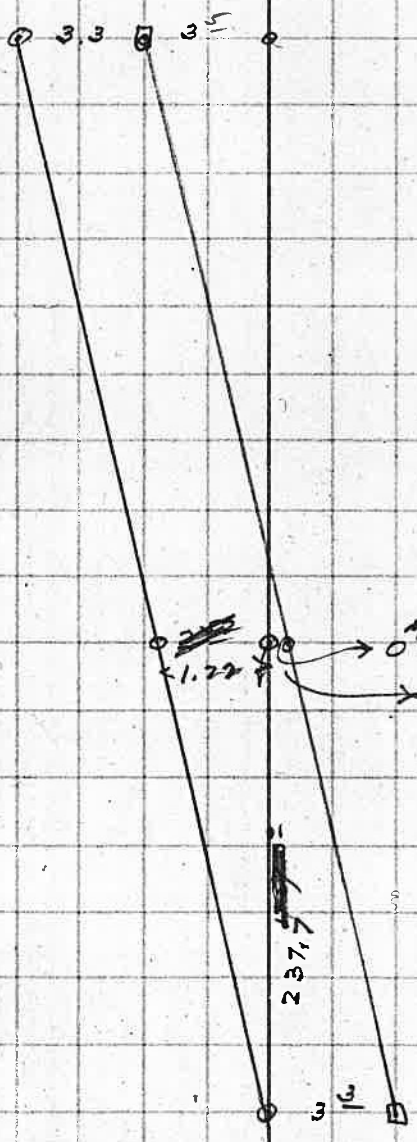
$$\begin{array}{r}
 1346.5 \overline{) 27.0000} \\
 \underline{26930} \\
 070000
 \end{array}
 \quad
 \begin{array}{l}
 .02005 \\
 1009'
 \end{array}$$

$$\begin{array}{r}
 37^{\circ} 02' \\
 \underline{109} \\
 35^{\circ} 53'
 \end{array}$$

0069 69

82

EAST
→



$$\frac{x}{6.8} = \frac{237.7}{1320}$$

~~2.51~~

$$\begin{array}{r} 237.7 \\ 6.8 \\ \hline 190.16 \\ 142.62 \\ \hline 1616.36 \quad (1.22) \\ 1320 \\ \hline 2963 \\ 2640 \\ \hline 3230 \end{array}$$

$$\begin{array}{r} 3.30 \\ 1.22 \\ \hline 2.08 \end{array}$$

~~2.37.7~~

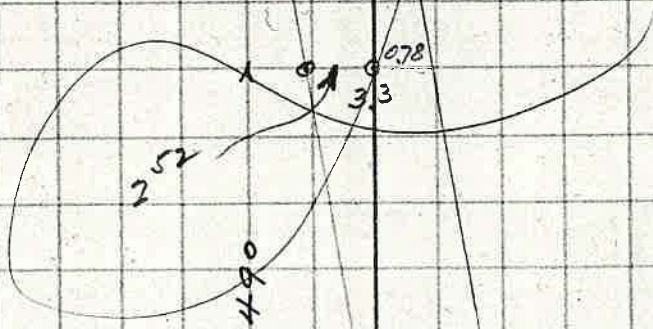
320
290
830



$$\frac{X}{6.8} = \frac{490}{1320}$$

490
6.8
3920
2940
1320 $\overline{) 3332.0}$ 2.52
2640
6920
6600
3200

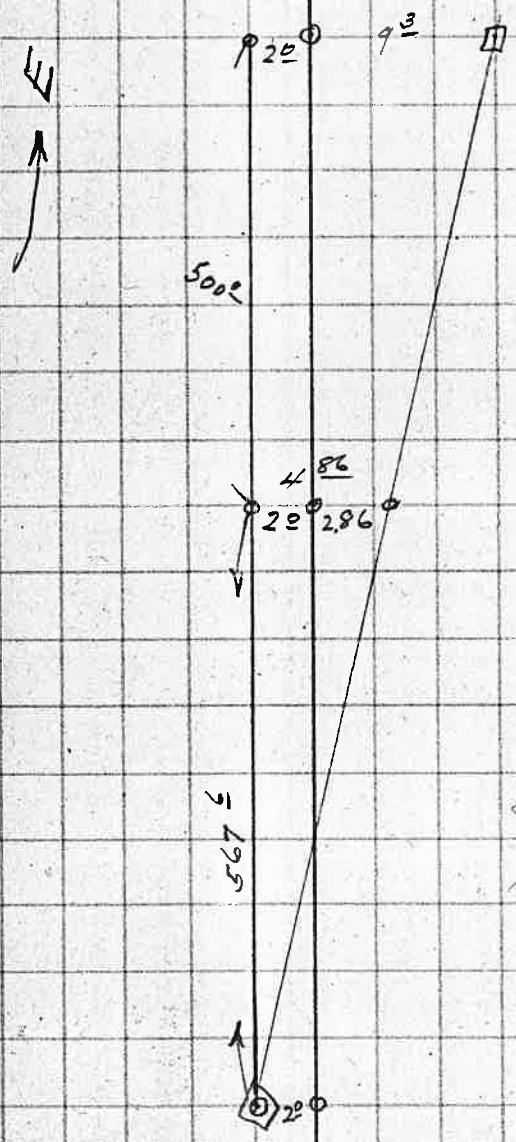
~~1320~~
~~344~~



$$\begin{array}{r} .6023 \\ 33.2 \\ \hline 12046 \\ 18069 \\ 18069 \\ \hline 1999636 \end{array}$$
$$\begin{array}{r} .7983 \\ 33.2 \\ \hline 15966 \\ 23949 \\ -23949 \\ \hline 2650356 \end{array}$$

737.6
 582.3

 155.3



327.6 ✓
 252.4 ✓

 820.0
 132 ✓

 500.

N 42 1/2° W 53.00 to

Down River 16.00

5 R 13'

$$\frac{x}{9.3} = \frac{567.6}{1320}$$

$$\begin{array}{r}
 \sqrt{67.6} \\
 9.3 \\
 \hline
 17028 \\
 39732 \\
 \hline
 74143.48 \\
 3960 \\
 \hline
 1834 \\
 1320 \\
 \hline
 5148
 \end{array}$$

~~576~~

$$\begin{array}{r}
 \sqrt{67.6} \\
 9.3 \\
 \hline
 17028 \\
 81084 \\
 \hline
 8278.68 \\
 7920 \\
 \hline
 3586 \\
 2640 \\
 \hline
 9460
 \end{array}$$

6.27

$$\frac{x}{11.3} = \frac{567.6}{1320}$$

$$\begin{array}{r}
 820 \\
 232.4 \\
 \hline
 567.3 \\
 11.3 \\
 \hline
 17028 \\
 5676 \\
 \hline
 5676 \\
 6413.58 \\
 5280 \\
 \hline
 11338 \\
 10560 \\
 \hline
 7780
 \end{array}$$

4.86

Douglas Waite & Eva L.
to
W.H. Rose.

W.O. 24" N. 65°W. 119 lks

North on E. Bdy of Cl #1
16.73 Intersect line bet. Secs
3+10 - 10.50 E. from
Sec Cor. Set Post
from which,

120 20 S 70°W 125

East on S Bdy + on
line bet Secs 3+10
23.88 to S.E. Cor of Cl #1
120 5" N 30°W 45 lks
130 7" S 40°W 123 lks

130 6" N ————— 20 lks

N. 0°23' E. On true E Bdy
38.15 to S.E. Cor.

June 17 - 1856

Cl 41 T27SR4W

Begin at N. E. cor set post
in prairie + deposited stone
12" x 14" S. $19\frac{1}{2}^{\circ}$ E.

West on N. Bdy of Cl 41
34.50 Intersect line bet Secs
3+4 2.00 S. of $\frac{1}{4}$ Post.

65.50 NW Cor Cl 41 set a
post + deposited stone
7" x 10"

South on W. Bdy
38.50 Intersect line bet Secs
4+9 - 7.98 chains E. from
 $\frac{1}{4}$ post.

55.50 S.W. cor from which
B0. 7" N. 75° E. 139 lks
B0 6" S. 88° W. 45 ✓

East on S. Bdy.
31.50 Intersect line bet Secs 9+10
16.75 S. of Sec Cor.
42.00 To S. E. Cor Cl. 41

Lat $43^{\circ}5\frac{1}{2}'N$

1073 74

$\frac{1}{4}$ Cor bet Secs 4 + 9
west

39.50

~~4000~~

BO 8" S 2° W 10 lks
BO 4" N 1° W 12 lks.

$\frac{1}{4}$ Cor bet Secs 3 + 4

50° 11' E

39.86

BO 6" N 32° W 50 lks

BO 18" N 25° E 145 lks

79.86

to Cor.

N. 89° 31' W bet Secs 3 + 10

39.67

BO 20" S 87° W 17 lks

BO 12" North 29 lks.

79.34

to Cor.

Cor Secs 3 - 4 - 9 + 10

BO 20" N 68° W 42 lks

✓ 20" S 35° W 208 ✓

✓ 2" N 5° W 58 ✓

No other trees

Lat. 43° 15'

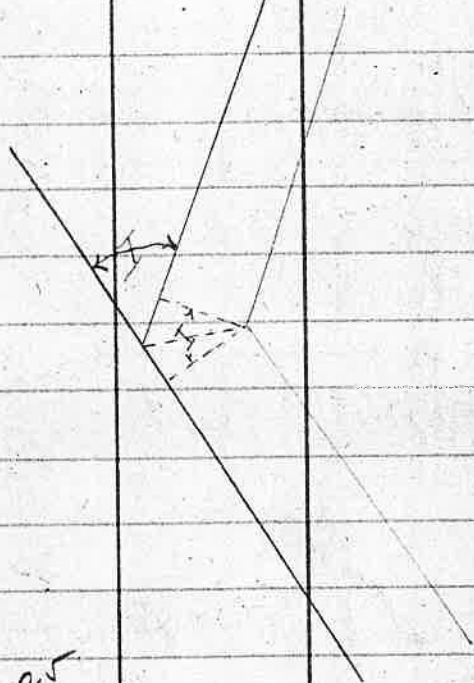
S. 16° 36' 35.8" 4 A.M.

7' 19.8" (Diff. for 10 hrs)

S. 16° 29' 16.0" + 1' 49.6" = 16° 31' 05.6" = 2 P.M.
43.98

16° 28' 37.02" + 2' 20.1" = 16° 30' 52.12" = 3 P.M.
43.98

16° 27' 48.04" + 3' 47" = 16° 28' .35" = 4 P.M.



9762 $\sqrt{20,000} \approx 141.42$
 $\frac{19,524}{47600}$
 $\frac{48810}{20.5}$

$$\begin{array}{r} 25.02 \\ 180 \\ \hline 2 \overline{) 205.02} \\ 102.51 \end{array}$$

~~205.02~~ 102.51 15

$$\begin{array}{r} 4.37 \\ .7 \\ \hline 3.054 \\ 2 \\ \hline 6.118 \end{array}$$

$$\begin{array}{r} 13.1 \\ 7 \\ \hline 9.17 \end{array} \quad \begin{array}{r} 17.5 \\ 7 \\ \hline 12.2 \checkmark \end{array}$$

$$\begin{array}{r} 21.8 \\ .7 \\ \hline 526 \end{array} \quad \begin{array}{r} 23.2 \\ 66 \\ \hline 13944 \\ 13944 \\ \hline 1533.84 \end{array}$$

$$\begin{array}{r} 43.98 \\ 10 \\ \hline 439.8 \end{array} \quad \begin{array}{r} 420 \\ 19.8 \end{array}$$

$$\begin{array}{r} 201 \\ 113 \\ \hline 603 \\ 201 \\ \hline 227.13 \\ 180 \end{array}$$

$$\begin{array}{r} 13944 \\ 13944 \\ \hline 1533.84 \end{array}$$

$$\begin{array}{r} 6.91 \\ 66 \\ \hline 4146 \\ 4146 \\ \hline 456.06 \end{array}$$

$$\begin{array}{r} 20.6 \overline{) 142.3} \\ 1236 \\ \hline 187.0 \\ 1854 \\ \hline 160.0 \end{array}$$

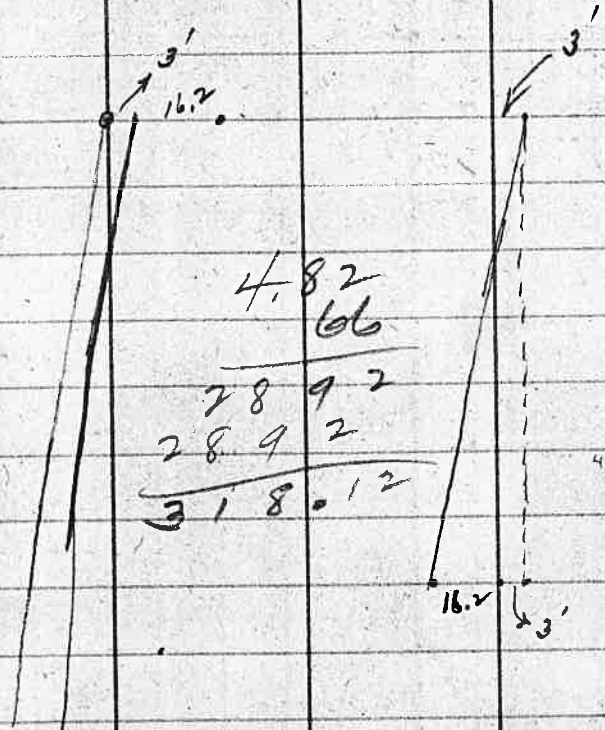
$$\begin{array}{r} 6.907 \\ 66 \end{array}$$

$$\begin{array}{r} 1 - 37 \\ 97 \\ 1.13 \\ \hline 291 \\ 97 \\ 97 \\ \hline 109.61 \end{array}$$

$$\begin{array}{r} 13+20 \\ 57434 \\ \hline 19463.4 \end{array} \quad \begin{array}{r} 456 \\ 253.7 \\ \hline 709.7 \\ 278 \\ \hline 987.7 \end{array}$$

$$\begin{array}{r} 109.61 \\ 60 \\ \hline 49.61 \end{array}$$

$$\begin{array}{r} 124 \\ 113 \\ \hline 372 \\ 124 \\ \hline 124 \\ 140.12 \\ \hline 120 \end{array}$$

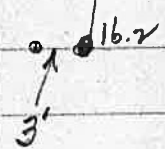


$$\begin{array}{r}
 4.82 \\
 \underline{66} \\
 2892 \\
 2892 \\
 \hline
 318.12
 \end{array}$$

29.58

$$\begin{array}{r}
 19.2000 \\
 \underline{17748} \\
 14520 \\
 \underline{11832} \\
 26880 \\
 \underline{26622} \\
 \hline
 26622
 \end{array}$$

649



007576

APR. 15. 1900

$$\begin{array}{r}
 44.82 \\
 \underline{66} \\
 26892 \\
 \underline{26892} \\
 2958.12
 \end{array}$$

.65 ft per 100

Fence C

1364.0

$$\begin{array}{r}
 64.74 \\
 \underline{25.90} \\
 38.84 \\
 40. \\
 \hline
 1.66 \\
 8 \\
 \hline
 1.24
 \end{array}$$

Fence C

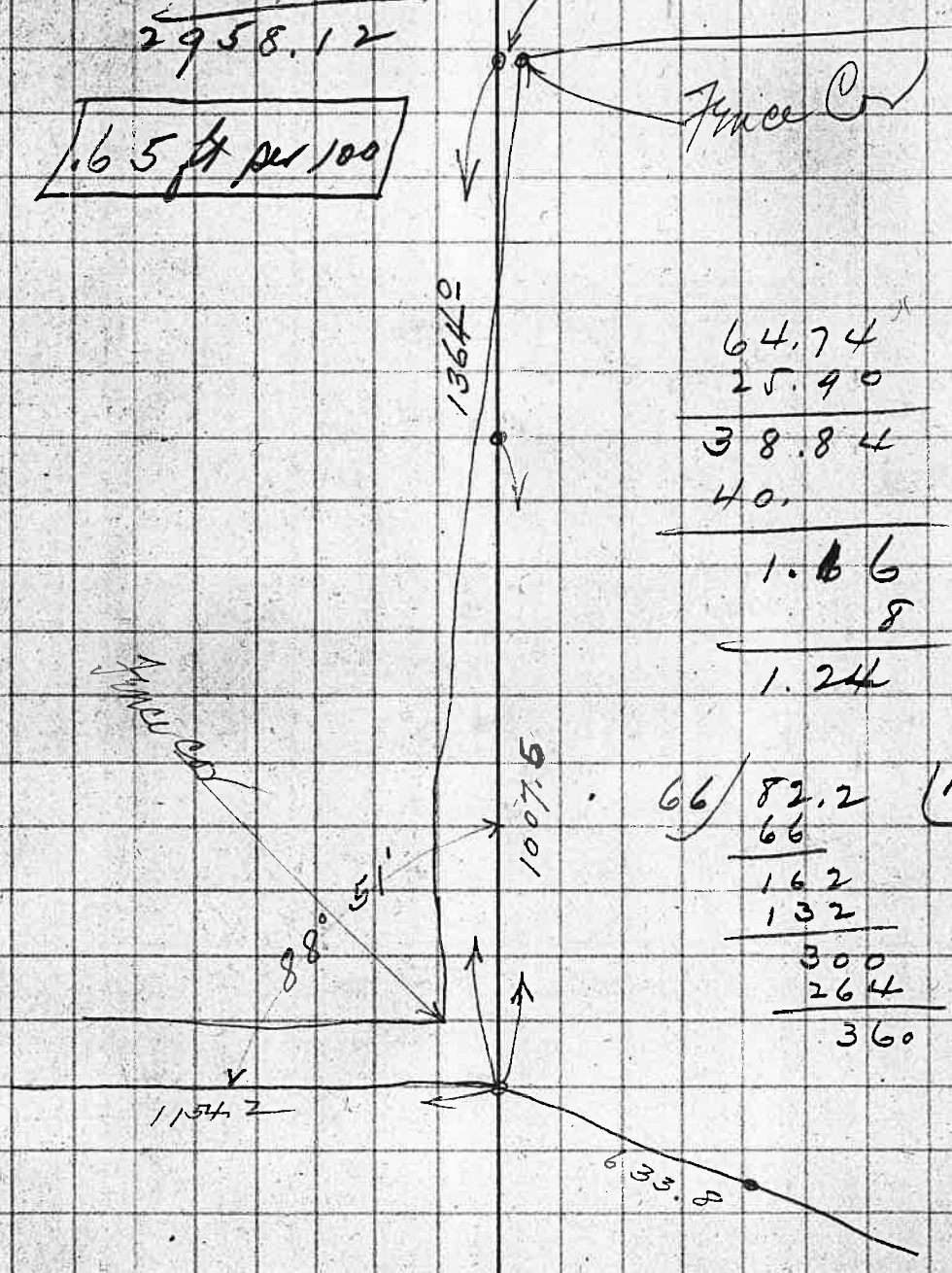
1007.6

$$\begin{array}{r}
 66 \overline{) 82.2} \quad (1.24) \\
 \underline{66} \\
 162 \\
 \underline{132} \\
 300 \\
 \underline{264} \\
 360
 \end{array}$$

88° 51'

1154.2

633.8



Jan 10th 1913
Lat $43^{\circ}39'$

$22^{\circ} 7' 6.3''$

$4' 30''$

$22^{\circ} 11' 36.3''$

$3' 32.8''$

4 A.M.

$22^{\circ} 8' 3.5'' + 2' 25'' = 22^{\circ} 10' 28.5''$ 2 P.M.
21.28

$22^{\circ} 7' 42.22'' + 3' 21'' = 22^{\circ} 11' 3.22''$ 3 P.M.
21.28

$22^{\circ} 7' 20.94'' + 5' 44'' = 22^{\circ} 13' 4.94''$ 4 P.M.

6.6 $\overline{)6.1000}$ (92424
594
160
132
280
264
160

$42^{\circ} 45'$

7343 $\overline{)6.6000}$ (9
68087

$$\begin{array}{r} 21.28 \\ \underline{10} \end{array}$$

$$\begin{array}{r} 212.8 \\ \underline{180} \\ 32.8 \end{array} \quad (3)$$

$$\begin{array}{r} 179 \\ \underline{22} \\ 201 \end{array} \quad (3)$$

$$\begin{array}{r} 129 \\ \underline{16} \\ 145 \\ \underline{120} \\ 25 \end{array} \quad (2)$$

$$\begin{array}{r} 344 \\ \underline{302} \\ 42 \end{array} \quad (5)$$

$$\begin{array}{r} 6.17 \\ \underline{2.11} \\ 4.06 \\ \underline{1.23} \\ 2.83 \end{array}$$

