

Field Book # 23

Chas. E. Roberts

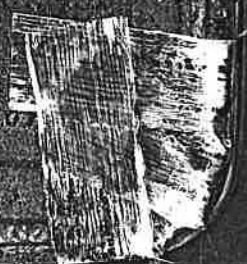
FB 13

TRANS. BOOK

1800

County Surveyor 1908-09

Chas. E. Roberts M.B. Geom.
ROSEBURG, ORE.



ROSEBURG, OREGON. 19
 N S E W

N 10° 30' E 76.58 ch	75.30		13.95	
W 10.16 "				11.15
S 62° 30' W 4.00 "		1.85		3.55
S 10° 30' W 74.78 "		73.53		13.62
E 14.39		75.53	14.39	
	<u>75.30</u>	<u>75.30</u>	<u>28.34</u>	<u>27.01</u>
		75.38		28.10
				28.32

N 10° 30' E 76.58	75.30		13.95	
W 10.15				11.15
S 63° 38' W 3.86		1.77		3.57
S 10° 30' W 74.78		73.53		13.62
E 14.39		75.53	14.39	
	<u>75.30</u>	<u>75.30</u>	<u>28.34</u>	<u>28.34</u>

108.07 Acres

0001

INDEX.

Page

C.D. Beales et al - Orchard Land - 7

Levels for Irrigating Ditch S. L. & W. Co-2

0002

Survey For Beales et ux Nov 12 1908

Began at the N.W. Cor. of the Wm
Wallis D.L.C. N 45 T 27 S R 4 W Sec 19

Thence ran Easterly along N bdy W 1/2 W 1

1/2 D.L.C. of
Lane 26 1/2 Ms. W. 1/2
6.00 Chs Hit bridge and West end of Lane

12.68 " RUN N 50 39' W along W. side Co Road

4.91 1/2 Chs. Line is W. side Lot 1

13.20 " East set stake for Lot 1 and 2

9.31 " " " " " 1 & 2

9.50 " E — 12.40 Chs N. Lot 2 & 3

7.25 " E — 14.74 " " " 3 & 4

6.25 " E — 16.73 " " " 4 & 5

6.00 " E — 18.26 " " " 5 & 6

5.50 " E — 15.95 " " " 6 & 7

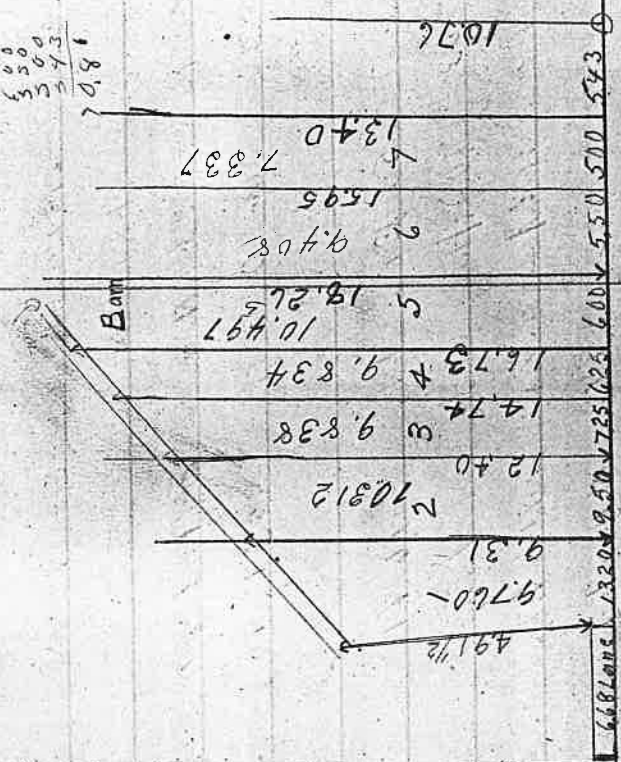
5.00 " E — 13.40 " " " 7 & 8

5.43 " E " 10.76 " " E side L 8

12.68
13.20
9.50
7.25
6.25
6.00
5.50
5.00
5.43

0003

95° 39'



1.50
2.00
5.00
12"

10773
049
10,720

0004

2

Levels for Sutherland	L & V Co's	Main Irrigation Ditch	Nov 17 '08
B.M. 570	543.70	U.S. G.S. B.M. set at crossing W. end	
T.P. 10.99	553.67	Whitmore Gap	
T.P. 12.70	566.10	Elev. of Rock under N.E. cor. of Barn	
T.P. 12.49	577.80	= 579.84 above Datum.	
T.P. 11.27	588.08		
T.P. 12.92	600.45		
T.P. 648	606.82		
B.M.		B.M. set near Road (K. Side) N. E. of	
T.P. 560	610.12	Barr 350ft	B.M. No 1
T.P. 2.98	607.16		
T.P. 619	602.63		
B.M. 364	600.12	B.M. set nail in Rock N. side Co Road	
1280	609.47	East 100ft of Large Gulch	B.M. No 2
T.P. 796	617.05		
412	610.45		
B.M. 126	606.40	B.M. set on shelf on Big Stone NW of	
233	602.42	old Barr. B.M. No 3	
721	605.63		
B.M. 460	604.92	B.M. set near fence S. side Road	
		N. of old shed N.W. end Orchard No 4	

15.75 0005

3056
1375
1481
39492
60973

3086

589.21
14.57
590

T.P.	112	60492	200	60292	B.M. No 5. Set N side Road opposite N.E. cor. of Plat A. Nail driven in post
T.P.	137	59208	12.33	591.71	Set on hub N side Road 250 yds. E. of Crouch's house. Set near fence. B.M. No 6
B.M.	674	58692	11.90	580.18	Set on hub. South side of Road. B.M. No 7
	578	59186	0.84	586.08	B.M. No 8 set on N cor. granary (Rock)
B.M.	194	58344	16.86	581.50	Point on Rock in field S. of Road
	297	59291	0.50	582.94	South of Barn No 9
B.M.	849	59277	8.63	584.28	B.M. No 10 set hub. Near N W cor
	515	59992	3.00	580.77	F.L.C at Fair Oaks
B.M.			5.71	589.21	1 shot taken W of Hallway lots 300 ft
	1076	60059	5.09	589.83	
	1065	60619	4.45	596.14	
	975	61447	1.47	604.72	
B.M.	475	61448	4.74	609.73	
B.M.	544	60802	11.90	602.58	
	771	60654	9.19	598.83	
	561	60308	9.07	597.47	
B.M.	437	60213	5.32	599.76	
	770	60523	4.60	597.53	
			6.00	599.13	
			5.52	599.71	

60523

532	599.91	Shots taken W of Kelly lots. 300 ft
569	599.54	" " " " " " " " in hollow
822	602.14	
510	608.08	B.M. N ^o 11 set on hnd ^{hollow} E nd of Lot
1138	606.43	Shot taken near Fawcote in S side N of lawn
723	611.90	
602	621.83	
	627.00	
	628.58	B.M. N ^o 12 set on hnd near ditch

Wm Pava St

220

88 ft Creek

S + S + S

90 ft to Creek

110 ft to Creek

Cent. Ave

Cadogan

on E side Cadogan St. 174.74 to start
of C. Boin K

218 ft to

to Mid. of Creek

365 ft to mid

83

36 1/2 + rd

21 1/2

11 1/2

12 1/2

17 1/2

21 1/2

26 1/2

27 1/2

33 1/2

36 1/2



S+0.	B.S.	H.I.	F.S.	Elev.	Gr. Bot. E.D.	Cut	% of Grade Per 100	Remarks
	661	604.14		597.53				
0+10			4.54	599.60	597.60	2.00		
750			4.87	599.33	597.57	1.76		
1+00			4.87	599.33	597.54	1.79		
750			4.80	599.34	597.51	1.83		
			4.95	599.19	597.48	1.71		
			4.87	599.33	597.45	1.88		
			4.70	599.44	597.42	2.02		
			4.69	599.45	597.39	2.06		
			4.94	599.20	597.36	1.84		
			4.97	599.17	597.33	1.84		
5+00			5.15	598.99	597.30	1.69		
11			5.84	598.30	596.97	1.33	66	Change Grade
12			6.11	598.03	596.64	1.39		
13			6.95	597.19	596.31	0.88		
14			7.29	596.85	595.98	0.87		
15			7.01	597.13	595.65	1.48		
T.P.	5.21	602.34						
16			4.98	597.36	595.62	1.74		

70

770

1.

62.64 346

70

Trade
Jan. 1934

	B. S.	H. I.	F. S.	E. C.	Cut	
17		602.84	5.22	597.12	595.59	1.53
18			5.23	597.11	595.56	1.55
19			4.63	597.71	595.53	2.18
20			4.20	598.14	595.50	2.64
B.N. 10			4.62	597.72	595.47	
21			4.23	598.09	595.44	2.65
T.P.	4.40	602.16		597.76		
22			4.67	597.47	595.41	2.08
23			5.00	597.16	595.38	1.78
24			5.00	597.16	595.35	1.81
25			5.50	597.66	595.32	1.34
26			4.91	597.25	595.29	1.96
27			4.67	597.63	595.26	2.39
28			5.00	597.16	595.23	1.93
29			5.28	597.88	595.20	2.68
30			4.62	597.54	595.17	2.37
T.P.	3.85	601.39				
31			3.67	597.72	595.14	2.58
32			3.50	597.89	595.11	2.78

8

net	B.S.	H.I.	F.S.	Ed.	End	eat
33		601.39	3.58	597.81	595.08	2.73
34			3.76	597.63	595.05	2.58
35			3.70	597.69	595.02	2.67
36			4.38	597.01	594.99	2.02
37			4.62	596.77	594.96	1.81
38			5.13	596.09	594.93	1.16
39			5.13	596.16	594.90	1.36
40			5.17	596.22	594.87	1.35
T.P.	4146	600.68				
41			5.02	595.66	594.84	0.82
42			4.99	595.69	594.81	0.88
43			4.84	595.84	594.78	1.06
44			4.35	596.33	594.75	1.58
45			3.53	597.15	594.72	2.43
46			3.56	597.12	594.68	2.43
47			3.81	597.87	594.66	3.21
48			3.95	596.73	594.63	2.10
49			3.86	596.82	594.60	2.22
50			4.40	596.28	594.57	1.71

7

	41	S	Ex	Grade	Out
51	578.80	2.55	596.34	594.54	1.80
52	2.61	2.04	596.85	594.51	2.34
53		1.79	597.10	594.45	2.62
54		2.32	596.57	594.45	2.12
55		2.63	596.26	594.42	1.84
56		2.92	595.97	594.39	1.58
57		3.23	595.66	594.36	1.30
58		3.26	595.63	594.33	1.30
59		3.31	595.58	594.30	1.28
60		3.40	595.49	594.27	1.22
T.P.	3.58				
61		3.88	595.19	594.24	0.95
62		3.35	595.72	594.21	1.51
63		2.73	596.34	594.18	2.16
64		2.62	596.45	594.15	2.36
65		3.33	595.74	594.12	1.62
66		3.60	596.07	594.09	1.98
67		2.25	596.82	594.06	2.76

Sta.	B. S.	H 1	F. S.	Elev	Grade	cut
68		599.07	3.20	595.87	594.63	1.84 06
69			3.42	595.66	594.00	1.65
70			3.78	595.29	593.97	1.32
T.P.	5.21	600.50				
71			4.77	595.78	593.94	1.79
72			4.43	596.07	593.91	2.16
73			4.11	596.39	593.98	2.51
74			3.78	596.72	593.85	2.87
75			4.54	595.96	593.82	2.14
76			4.96	595.54	593.79	1.75
77			4.91	595.59	593.76	1.83
78			5.25	595.25	593.73	1.52
79			4.15	595.65	593.70	1.95
80			4.60	595.90	593.67	2.23
T.P.	6.84	602.94				
81			6.45	596.29	593.64	2.65
82			7.00	595.74	593.61	2.13
83			7.24	595.50	593.57	1.92
94			6.91	595.83	593.55	2.28

Stat	B.S.	H.I.	F.S.	Ele.	Grade	Cut	Per. 100.
95		602.74	6.50	596.24	593.52	2.72	06
96			7.06	595.68	593.49	2.19	
97			6.42	596.32	593.46	2.86	
98			6.32	596.42	593.43	2.99	
99			5.98	596.76	593.40	3.36	
90			7.01	595.73	593.37	2.36	4 44
B.S.			6.36	622.49			
7.8	4.92	600.65					
91			5.29	595.36	593.34	2.02	
92			5.56	595.09	593.31	1.78	
93			5.11	595.54	593.28	2.26	
94			5.48	595.17	593.25	1.92	
95			5.52	595.13	593.22	1.91	
96			5.56	595.09	593.19	1.90	A night
97			5.94	594.71	593.16	1.55	
98			6.47	594.18	593.13	1.05	
99			6.82	593.33	593.10	0.73	
			5.29	595.36	593.07	2.29	
			5.60	595.05	593.04	2.01	

Lat	B. S.	H	F.S.	Co.	Grade	Out	
102	551	600.56	4.95	595.61	593.01	2.60	
103			4.90	595.66	592.98	2.67	A night
104			5.78	594.78	592.95	1.83	11
105			6.73	593.83	592.92	0.91	A left
106			6.25	594.31	592.89	1.42	
107			6.54	594.02	592.86	1.16	A left
108			6.10	594.46	592.83	1.63	
109			5.78	594.78	592.80	1.99	A night
110			5.86	594.70	592.77	1.93	
T.P	5.24	599.94					
111			5.31	594.63	592.74	1.89	
112			5.27	594.67	592.71	1.96	A night
113			5.53	594.41	592.68	1.73	A night
114			6.08	593.86	592.65	1.21	
115			5.99	595.95	592.62	3.33	
116			4.56	595.38	592.59	2.79	
117			5.06	594.88	592.56	2.32	
118			4.45	595.49	592.53	2.96	

$$\begin{array}{r} 5.24 \\ 5.53 \\ \hline 10.77 \\ 5.56 \\ \hline 16.33 \end{array}$$

Stat	B. S	H. I	F. S.	Ea.	Grade	cut
119		599.94	4.67	595.27	592.50	2.77 .06
120			5.29	594.65	592.47	2.18
B.M.				609.59		
T. P.	3.36	598.01	3.30	3.30		
121			3.30	594.71	592.44	2.27
22			3.34	594.67	592.41	2.26
23			3.99	594.02	592.38	1.64
24			3.45	594.56	592.35	2.21
25			3.21	594.80	592.32	2.48
26			4.00	594.01	592.29	1.72
27			3.89	594.12	592.26	1.86
28			4.03	593.98	592.23	1.75
29			4.16	593.85	592.20	1.65
130			4.43	593.58	592.17	1.41
T. P.	2.54	596.12				
131			2.95	593.17	592.14	1.03
132			2.12	594.00	592.11	1.89
133			1.91	594.21	592.08	2.13
134			2.09	594.03	592.05	1.98

	B.S.	H.I.	F.A.	26	Grade	Cut
135		596.12	0.51	595.61	592.02	3.59
36			0.07	596.05	591.99	4.06
37			1.41	594.71	591.96	2.75
T.P.	4.84	599.55	7.84			
38			5.52	594.03	591.93	2.10
39			5.39	594.16	591.90	2.26
40			5.49	594.06	591.87	2.19
41			5.88	593.67	591.84	1.83
42			4.82	594.73	591.81	2.92
43			6.54	593.01	591.78	1.23
44			5.99	593.56	591.75	1.81
45			6.31	593.24	591.72	1.52
46			5.63	593.92	591.69	2.23
T.P.	4.88	598.80				
47			5.75	593.05	591.66	1.39
48			5.35	593.45	591.63	1.82
49			5.32	593.48	591.60	1.88
150			4.28	594.52	591.57	2.95
51			2.80	596.00	591.54	4.46

in road

58

	B.S	H. I	F. S	Elc	Shak	cut
152		598.807	4.25	594.55	591.51	3.04
53			5.15	593.65	591.48	2.17
54			3.26	593.54	591.45	4.07
55			4.69	594.11	591.42	2.69
T.P.	2.74	596.85	0			
156			3.53	593.32	591.39	1.93
B.M.			7.70	589.15		
157			4.70	592.15	591.36	0.79
158			4.62	592.23	591.33	0.90
159			4.43	592.42	591.30	1.12
160			4.28	592.57	591.27	1.30
T.P.	4.22	596.79				
161			5.38	591.41	591.24	0.19
62			3.45	593.34	591.21	2.13
63			2.90	593.89	591.18	2.71
64			3.50	593.29	591.15	2.14
65			3.70	593.09	591.12	1.97
66			3.83	592.96	591.08	1.88
67			4.15	592.64	591.05	1.59

41

Alt	B.S.	H.I.	F.S.	Ele.	Grade	cut
T.P.	6.22	598.46				
168			6.41	592.45	591.02	1.43
169			4.30	594.56	590.99	3.57
170			6.47	592.39	590.96	1.43
171			5.35	593.51	590.93	2.58
72			6.79	592.07	590.90	1.17
73			6.39	592.47	590.87	1.60
T.P.	4.67	597.14				
174			5.05	592.09	590.84	1.25
75			5.09	592.05	590.81	1.24
76			3.50	593.64	590.78	2.86
77			3.92	593.22	590.75	2.47
78			4.22	592.22	590.72	1.50
79			3.91	593.23	590.69	2.54
180			4.73	592.41	590.66	1.75
81			4.51	592.63	590.63	2.00
82			4.76	592.38	590.60	1.78
T.P.	3.82	596.20				
83			3.71	592.48	590.57	1.92

Stn	B. S.	H. I.	F. S.	Elev.	Grade	cut	fill
184		596.20	3.35	592.85	590.54	2.31	
85			3.58	592.62	590.51	2.11	
86			3.75	592.45	590.48	1.97	
87			3.87	592.33	590.45	1.88	
88			7.38	588.82	590.42		1.60
89			7.02	589.88	590.39		1.21
190			3.73	592.47	590.36	2.11	
91			3.30	592.90	590.33	2.57	
92			4.32	591.88	590.30	1.58	
93	3.55	595.43					
94			3.28	592.05	590.27	1.78	
95			3.53	591.90	590.24	1.66	
96			3.00	592.43	590.21	2.22	
97			3.35	592.08	590.18	1.90	
98			3.15	591.58	590.15	1.43	
99			3.19	592.24	590.12	2.12	
100			3.69	591.74	590.09	1.65	
101			3.50	591.93	590.06	1.87	
102			3.42	592.01	590.03	1.98	

mail in bedrock

Alt	e. s.	h. l	F. S.	Ele	Grade	cut	fill
J.P.	51	590.43					
202	4.4		4.30	590.10	590.00	2.10	
203			4.45	591.98	589.97	2.01	
204			4.82	591.61	589.94	1.67	
05			4.77	591.66	589.91	1.75	
06			4.62	591.81	589.88	1.93	
07			7.18	589.25	589.85		0.60
08			6.22	590.21	589.82	0.39	
09			4.85	591.58	589.79	1.79	
210			4.54	591.89	589.76	2.13	
11			4.44	591.99	589.73	2.26	
12			4.93	591.50	589.70	1.80	
13			4.31	591.62	589.67	2.45	
14			5.02	591.41	589.64	1.77	
15			4.94	591.49	589.61	1.89	
J.P.	2.24	593.73					
16			2.63	591.10	589.58	1.52	
17			2.50	591.23	589.55	1.68	
18			2.90	590.83	589.52	1.31	

Stat	B.S.	H.I.	F.S.	Elv	Grade	cut	fill
219		593.73	4.03	589.70	589.49	0.21	
T.P.			6.51	587.22			
"	0.19	587.41					
220			3.62	583.79	589.46		5.67
J.P.			6.98	580.43			
"	0.13	590.56					
221			2.62	577.94	589.43		11.49
222			5.57	574.99	589.40		14.41
J.P.	0.51	575.50					
223			3.73	571.77	589.37		17.60
224			6.21	569.29	589.34		20.05
J.P.			6.14	569.36			
	1.37	570.73					
225			2.89	567.84	589.31		20.47
26			5.27	565.46	589.28		23.82
27			5.96	564.77	589.25		24.48
28			3.78	566.95	589.22		22.27
229			2.35	568.38	589.19		20.81
J.P.		570.72	0.19	570.54			

Stn	B.S.	H.I.	I.S.	Ele.	Grade	cut	fill
230	570.54 6.85	577.39	4.64	572.75	589.16		16.41
J.P.			0.35	577.04			
231	6.99	584.03	1.63	582.38	589.13		6.75
J.P.			0.17	583.86			
	7.00	590.86	0.46	590.00			
	3.23	593.23					
232			2.58	590.65	589.16	1.55	
233			2.40	590.83	589.07	1.76	
34			2.59	590.64	589.04	1.60	
35			2.56	590.67	589.01	1.66	
36			2.64	590.59	588.98	1.61	
37			2.76	590.47	588.95	1.52	
38			2.14	591.09	588.92	2.17	
39			1.92	594.31	588.89	2.42	
J.P.	5.98	597.29					
240			6.00	591.29	588.86	2.43	
241			6.24	591.05	588.83	2.22	

Stret	B.S.	H.I.	I.S.	Ele.	Grade	cut	fill
242		597.29	6.81	590.48	588.86	1.68	
43			6.24	591.05	588.77	2.28	
44			6.45	590.84	588.74	2.10	
45			6.78	590.51	588.71	1.86	
46			6.53	590.76	588.68	2.08	
47			5.15	592.14	588.65	3.49	
48			6.33	590.96	588.62	2.34	
J.P.	3.60	594.56					
49			4.02	590.54	588.59	1.95	
230			4.45	590.11	588.56	1.55	
J.P.			5.81	589.75			
251	2.09	590.84	3.44	586.96	588.53	1.57	1.57
252			6.05	584.79	588.56		3.71
J.P.			2.18	588.66			
253	5.60	594.26	5.86	588.40	588.47		0.07
54			3.60	590.66	588.44	2.22	2.22
55			3.23	391.03	588.41	2.62	

Stat.	B.S.	H.I.	F.S.	El.	Grade	cut	fill
256		594.26	3.43	590.83	588.38	2.45	
257			3.97	590.29	588.35	1.94	
D.P.	5.59	595.88					
258			5.32	590.56	588.32	2.24	
259			6.47	589.41	588.29	1.12	
260			5.83	590.05	588.26	1.79	
61			5.19	590.69	588.23	2.46	
62			5.73	590.15	588.20	1.95	
63			5.80	590.08	588.17	1.91	
D.P.	4.86	594.94					
264			5.82	589.12	588.14	0.98	
65			5.12	589.82	588.11	1.71	
66			4.59	590.35	588.08	2.27	
67			5.29	589.65	588.05	1.60	
68			5.52	589.42	588.02	1.40	
69			4.92	590.02	587.99	2.03	
70			5.37	589.57	587.96	1.61	
J.P.	6.52	596.09					
71			6.50	589.59	587.93	1.66	

should plane from the station.

enter Curves into notebook

Stat	B.S.	H.I.	S.S.	Elev.	Grade	cut	fill
272		596.09	6.03	590.06	587.90	2.16	
73			5.31	590.78	587.87	2.91	
74			5.37	590.72	587.84	2.88	
75			5.33	590.76	587.81	2.95	
76			6.17	589.92	587.78	2.14	
277			6.63	589.46	587.75	1.71	
J.R.	0.83	590.29					
278			8.74	587.55	587.72		6.17
279			7.69	589.60	587.69		5.09
280			0.68	589.61	587.64	1.95	
J.P.	4.42	594.03					
84			3.45	590.58	587.63	2.95	
89			4.70	589.33	587.60	1.73	
93			4.81	589.22	587.57	1.65	
84			4.55	589.48	587.54	1.94	
85			4.50	589.53	587.51	2.02	
86			4.37	589.69	587.48	2.21	
87			4.36	589.67	587.45	2.22	
J.P.	3.07	592.74					

Stat	B. S.	H. I.	I. S.	Elev	Grade	Cut
288		592.74	4.10	588.64	587.42	1.22
89			4.33	588.41	587.39	1.02
90			3.96	588.78	587.86	1.42
			7.00	585.74		
	0.55	586.29				
B.M. #5			5.74	580.55		
J.R.	7.40	596.23				
91			6.40	589.83	587.33	2.50
92			6.69	589.54	587.30	2.24
			5.18	594.72		
93			5.31	589.41	587.27	2.14
94			6.05	588.67	587.24	1.43
95			6.02	588.70	587.21	1.49
96			6.15	588.57	587.18	1.39
97			6.40	588.32	587.15	1.17
98			5.68	589.04	587.11	1.92
99			5.34	589.38	587.09	2.29
300			5.70	589.02	587.06	1.96
J.P.	4.36	593.32				

in center of road

etc

"

Dist	E.S.	H.I.	F.S.	EL	Lead:	cut
301		593.32	4.08	588.94	587.03	1.91
02			4.02	589.30	587.00	2.30
03			3.90	589.42	586.97	2.45
04			4.34	588.98	586.94	2.04
05			4.97	588.35	586.91	1.44
06			4.56	588.76	586.88	1.88
07			4.55	588.97	586.85	2.12
08			4.86	588.96	586.82	2.14
09			4.45	588.87	586.79	2.08
310			4.58	588.74	586.76	1.98
311			5.12	588.20	586.73	1.47
J.R.	4.57	592.77				
12			4.59	587.88	586.70	1.18
13			3.79	588.98	586.67	2.31
14			4.19	588.53	586.64	1.94
15			4.50	588.27	586.61	1.66
16			4.04	588.73	586.58	2.15
17			4.94	587.83	586.55	1.28
18			4.60	588.17	586.52	1.65

Stat	B.S.	I.I.	F.S.	Elc	Grade	cut
319		592.77	4.34	588.43	586.49	1.94
20			4.05	588.72	586.46	2.26
21			4.83	587.94	586.43	1.51
22			4.70	588.07	586.40	1.67
J.P.	4.36	592.43				
23			4.26	588.17	586.37	1.80
24			4.31	588.12	586.34	1.78
25			4.29	588.14	586.31	1.83
26			4.12	588.31	586.28	2.03
27			3.83	588.60	586.25	2.35
28			3.61	588.82	586.22	2.60
29			4.06	588.37	586.19	2.18
330			3.99	588.44	586.16	2.28
31			4.10	588.33	586.13	2.20
32			3.55	589.40	586.10	3.30
33			3.62	588.81	586.07	2.74
J.P.	3.59	592.40				
34			4.90	587.60	586.04	1.56
35			4.55	587.85	586.01	1.84

Stat	B.S.	H	F.S.	Elc	Grade	cut
330		592.40	4.55	587.85	585.98	1.87
37			5.10	587.30	585.95	1.35
38			4.49	587.91	585.92	1.99
39			4.70	587.70	585.89	1.81
40			4.41	587.99	585.86	2.13
			0.99	591.99		
	6.45	598.94				
			0.96	597.98		
J.P.	6.48	604.46	3.79	600.67		
	3.29	596.27				
341			3.17	588.10	585.83	2.27
42			3.59	587.68	585.80	1.88
43			4.00	587.17	585.77	1.50
44			3.74	587.53	585.74	1.79
45			4.42	586.85	585.71	1.14
46			3.57	587.70	585.68	2.02
47			3.62	587.65	585.65	2.00
48			3.07	588.20	585.62	2.58
J.P.	3.53	591.72				

under old form

Stat	B.S	H I	F.S.	Elev	Grade	cut	fill
349		591.73	3.75	587.98	585.59	2.39	
350			5.29	586.44	585.56	0.88	
51			4.01	587.72	585.53	2.19	
52			3.80	587.93	585.50	2.43	
53			4.40	587.33	585.47	1.86	
54			4.73	587.00	585.44	1.56	
55			4.44	587.29	585.41	1.88	
56			4.01	587.72	585.38	2.34	
57			4.32	587.41	585.35	2.06	
J.P.	3.41	590.82					
58			3.37	587.45	585.32	2.13	
59			2.87	587.95	585.29	2.66	
300			4.10	586.72	585.26	1.46	
61			4.27	586.55	585.23	1.32	
62			3.89	586.93	585.20	1.73	
63			3.66	587.16	585.17	1.99	
64			3.64	587.18	585.14	2.04	
7P			6.53	584.29			
365	0.06	584.35					8.16
			7.40	586.95	585.11		

Start	B.S.	H.I.	I.S.	Ele.	Grade	cut	fill
366		584.35	4.02	580.33	585.08		4.75
47		586.69					
			0.56	586.13			
67		588.89	1.51	587.38	585.05	2.33	
68			1.69	587.20	585.02	2.18	
69			2.20	586.69	584.99	1.70	
370			1.68	587.21	584.96	2.25	
IP3	593	593.14					
71			5.58	587.56	594.93	2.63	
72			5.04	588.10	584.90	3.20	
73			6.52	586.62	584.87	1.75	
D.P.	401	590.63					
74			4.71	585.92	584.84	1.08	
75			4.37	586.26	584.81	1.45	
76			4.36	596.27	584.78	1.49	
77			3.64	586.99	584.75	2.24	
78			3.82	586.81	584.73	2.08	
79			4.51	586.12	584.70	1.92	

cor 8 and 9 15' N.

Stat	B.S.	W	I.S.	Ele	Grade	cut	Price
380		590.63	4.41	586.22	584.67	1.55	
J.R	5.13	591.55	6		584.67		
41			5.32	586.03	584.64	1.39	
42			5.13	586.22	584.61	1.61	
83			4.51	586.84	584.58	2.26	
84			4.14	587.21	584.55	2.66	
85			4.55	586.80	584.52	2.28	
86			4.80	586.55	584.47	2.06	
87			5.27	586.08	584.46	1.62	
88			9.28	581.97	584.43		2.46
89			4.92	586.43	584.40	2.03	
390			5.19	586.16	584.37	1.79	
J.P.	2.44	589.60					
91			2.80	585.80	584.34	1.46	
92			2.03	586.57	584.31	2.26	
93			1.74	586.86	584.28	2.58	
94			2.26	586.34	584.25	2.09	
95			2.07	586.53	584.22	2.31	
96			2.04	586.56	584.19	2.37	

Stat	B.S.	H.I.	I.S.	Elev	Grade	cut	fill
397		588.60	2.06	586.54	584.16	2.38	
98			2.07	586.53	584.13	2.40	
99			2.33	586.27	584.10	2.17	
400			2.40	586.20	584.07	2.13	
		592.77	0.19	592.58			
	6.90	599.49	0.06	599.43			
	6.79	606.22	0.90	605.41			
B.M. #3							
J.P.	1.31	587.51					
4			6.86	580.65			
	1.69	582.34					
401			4.31	578.03	584.64		6.61
402			4.96	577.38	584.01		6.63
			0.02	582.32			
403	5.68	589.00	0.80	587.20	585.99	3.21	
404			1.78	586.22	583.95	2.26	

Atad	B. A.	H. I.	J. S.	Elb	Grade	Out
405		585.00	2.09	585.91	583.92	1.98
406			1.81	586.19	583.89	2.29
407			1.83	586.17	583.86	2.30
408			1.95	586.05	583.83	2.21
J.P.	275	588.80				
09			3.00	585.90	583.80	2.00
410			3.35	585.45	583.77	1.68
11			3.23	585.57	583.74	1.83
12			2.74	586.06	583.71	2.35
13			3.15	585.65	583.68	1.77
14			3.19	585.61	583.65	1.96
15			3.10	585.70	583.62	2.08
16			4.01	584.79	583.59	1.20
17			3.65	585.15	583.56	1.59
18			3.35	585.45	583.53	1.92
J.P.	4.98	590.43				
19			4.97	585.46	583.50	1.96
420			4.84	585.57	583.47	2.10
21			4.89	585.54	583.44	2.10

Stat	B. S.	H. I	S. S.	Ele.	Grade	cut
422		590.43	5.15	585.28	583.41	1.87
23			5.15	585.28	583.38	1.90
24			5.89	584.54	583.35	1.19
25			5.52	584.91	583.32	1.59
26			4.82	585.61	583.29	2.32
27			5.20	585.23	583.26	1.97
28			5.29	585.14	583.23	1.91
J. P.	4.88	590.02				
29			5.03	584.99	583.20	1.79
30			4.28	585.74	583.17	2.57
31			4.55	585.47	583.14	2.33
32			5.22	584.80	583.11	1.69
33			5.17	584.85	583.08	1.77
34			5.32	584.70	583.05	1.65
J. P.	6.86	591.56				
35			6.15	585.41	583.02	2.39
36			6.46	585.10	582.99	2.11
37			5.74	585.82	582.96	2.86
38			6.32	585.24	582.93	2.31

Stat	B. S.	H. I	F. S.	Ele	Grade	cut
439		591.56	6.30	585.26	582.90	2.36
440			6.19	585.37	582.87	2.50
41			6.45	585.08	582.84	2.24
42			6.48	585.08	582.81	2.27
43			6.83	584.73	582.78	1.95
44			6.18	585.38	582.75	2.63
45			6.60	584.96	582.72	2.24
46			5.80	585.76	582.69	3.07
47			6.51	585.05	582.66	2.39
J.P.	5.86	590.91				
48			6.21	584.70	582.63	2.07
49			6.18	584.73	582.60	2.13
450			6.93	583.98	582.57	1.41
51			6.41	584.51	582.54	1.97
52			6.45	584.46	582.51	1.95
53			6.32	584.59	582.48	2.11
54			6.73	584.18	582.45	1.73
55			6.58	584.33	582.42	1.91
56			6.76	584.15	582.39	1.76

Stat	B.S.	H.I.	F.S.	Ele	Grade	Cut	Fill
	8.48 6.75	590.89	0.29	590.60			
	8.48	599.08	1.91	597.17			
J.P.	5.81 2.26	586.41	8.65	577.76	582.86		4.60
4.57			10.52	568.11	582.33		14.22
J.P.	0.87	578.63	6.65	571.98	582.30		10.32
4.60			1.12	577.51	582.27		4.76
J.P.	8.45	585.96	3.48	582.48	582.24	0.24	
4.01			2.18	583.78	582.21	1.57	
6.2			1.83	584.13	582.18	1.95	
6.3			1.85	584.11	582.15	1.96	
6.4			1.77	584.19	582.12	2.07	
6.5			1.53	584.43	582.09	2.34	
6.6							
J.P.	3.19	587.62	3.41	584.14	582.06	2.08	
4.67							

Stat	B.S.	I.H.	I.S.	Elev	Grade	cut	fill
468		587.62	3.95	583.67	582.03	1.64	
69			3.98	583.64	582.00	1.64	
470			3.53	584.09	581.97	2.12	
471			3.44	584.18	581.94	2.24	
72			4.35	583.27	581.91	1.36	
73			4.37	583.25	581.88	1.37	
74			3.48	584.14	581.85	2.29	
75			4.07	583.55	581.82	1.73	
76			3.95	583.67	581.79	1.88	
J.P.		587.62					
77			3.34	584.28	581.76	2.52	
78			3.60	584.02	581.73	2.29	
479			3.97	583.65	581.70	1.95	
480			3.72	583.90	581.67	2.23	
81			4.10	583.52	581.64	1.88	
J.P.		584.48					
82			8.46	576.02	581.61		5.59
83			7.16	577.38	581.58		4.20
484			4.58	579.90	581.55		1.65

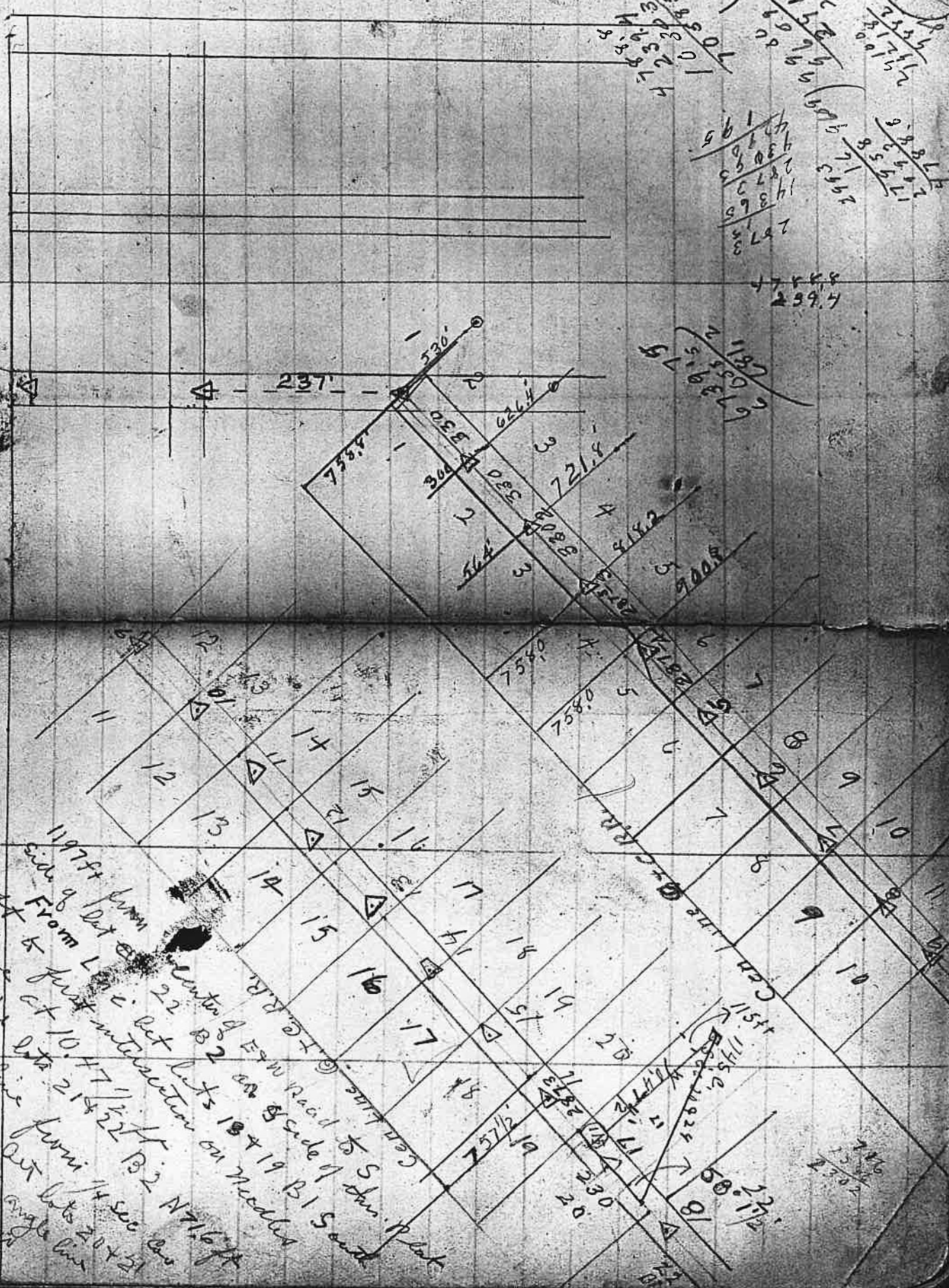
Stat	B.S.	H.I.	F.S.	Elo	Ende	Out	fill
485		584.48	1.62	582.86	581.52	1.34	
86			0.99	583.49	581.49	2.00	
87			1.05	583.43	581.46	1.97	
88			1.22	583.26	581.43	1.83	
489			0.95	583.53	581.40	2.13	
J.P.	592	589.45					
490			5.86	583.59	581.37	2.22	
91			5.86	583.59	581.34	2.25	
92			6.18	583.27	581.31	1.96	
93			6.15	583.30	581.28	2.02	
94			5.83	583.62	581.25	2.37	
95			6.10	583.35	581.22	2.13	
7.6			6.37	583.08	581.19	1.89	
2P	2.96	586.04					
97			2.70	593.34	581.16	2.18	
98			2.86	583.18	581.13	2.05	
99			2.74	583.30	581.10	2.20	
500			4.01	581.73	581.07	0.66	
501			2.37	583.67	581.04	2.63	

Stat	B.S.	H 1	F.S.	Elo	Grade	cut
502		586.04	3.54	583.20	581.01	2.19
03			3.15	582.86	580.98	1.88
04			3.08	582.96	580.95	2.01
05			3.02	583.02	580.92	2.10
06			3.50	582.54	580.89	1.65
07			3.32	582.72	580.86	1.86
08			3.06	583.04	580.83	2.21
09			3.08	582.96	580.80	2.16
510			3.32	582.72	580.77	1.95
501	5.69	588.41				
11			5.40	583.01	580.74	2.27
12			5.57	582.84	580.71	2.13
13			5.67	582.74	580.68	2.06
14			5.68	582.78	580.65	2.13
15			6.06	582.35	580.62	1.73
16			6.23	582.18	580.59	1.59
17			6.15	582.26	580.56	1.70
18			5.91	582.50	580.53	1.97
19			5.83	582.50	580.50	2.09

Stat	B. S.	H-1	J. S.	Ele	Grade	at
520		588.41	5.81	582.60	580.47	2.13
21			5.74	582.67	580.44	2.23
22			6.16	582.25	580.41	1.84
23			5.76	582.65	582.38	2.27
524			5.71	582.70	580.35	2.35
J.P.	12.33	595.03				
525			12.80	582.23	580.32	1.91
			0.50	594.53		
	9.80	604.33				
			0.16	604.17		

0012

1537



$$\begin{array}{r} 1001 \\ 3850 \\ 1405 \\ \hline 1405 \end{array}$$

$$\begin{array}{r} 1001 \\ 3850 \\ 1405 \\ \hline 1405 \end{array}$$

$$\begin{array}{r} 1001 \\ 3850 \\ 1405 \\ \hline 1405 \end{array}$$

$$\begin{array}{r} 1744.8 \\ 239.7 \\ \hline \end{array}$$

$$\begin{array}{r} 1182 \\ 673979 \\ 516519 \\ \hline \end{array}$$

1197 ft from
 side of lot 22
 From Lot 22
 West line to
 from line at
 to mill
 from line
 B2 1582 ft
 from line to
 from line
 Center of East Road to S side of Plan. Plat
 on side of lots 18 + 19 B1 South
 intersection on middle
 B2 N 71° 16' E
 21 + 22 ft
 from 1/4 sec line
 out lots 20 + 21
 angle line
 corner

$$\begin{array}{r} 1146 \\ 2302 \\ \hline \end{array}$$

0043

1/2

651.2

661.3

662.0

661.8

661.1

661.2

381

1

639.8

651.2

651.9

638.1

637.4

637.1

637.3

640.9

640.9

646.4

646.4

646.4

646.4

646.4

646.4

646.4

105

2

651.2

651.9

638.1

637.4

637.1

637.3

640.9

640.9

646.4

646.4

646.4

646.4

646.4

646.4

646.4

646.4

15

3

651.2

651.9

638.1

637.4

637.1

637.3

640.9

640.9

646.4

646.4

646.4

646.4

646.4

646.4

646.4

646.4

14

4

651.2

651.9

638.1

637.4

637.1

637.3

640.9

640.9

646.4

646.4

646.4

646.4

646.4

646.4

646.4

646.4

13

5

651.2

651.9

638.1

637.4

637.1

637.3

640.9

640.9

646.4

646.4

646.4

646.4

646.4

646.4

646.4

646.4

12

6

651.2

651.9

638.1

637.4

637.1

637.3

640.9

640.9

646.4

646.4

646.4

646.4

646.4

646.4

646.4

646.4

11

7

651.2

651.9

638.1

637.4

637.1

637.3

640.9

640.9

646.4

646.4

646.4

646.4

646.4

646.4

646.4

646.4

10

8

651.2

651.9

638.1

637.4

637.1

637.3

640.9

640.9

646.4

646.4

646.4

646.4

646.4

646.4

646.4

646.4

9

9

651.2

651.9

638.1

637.4

637.1

637.3

640.9

640.9

646.4

646.4

646.4

646.4

646.4

646.4

646.4

646.4

8

10

651.2

651.9

638.1

637.4

637.1

637.3

640.9

640.9

646.4

646.4

646.4

646.4

646.4

646.4

646.4

646.4

7

11

651.2

651.9

638.1

637.4

637.1

637.3

640.9

640.9

646.4

646.4

646.4

646.4

646.4

646.4

646.4

646.4

6

12

651.2

651.9

638.1

637.4

637.1

637.3

640.9

640.9

646.4

646.4

646.4

646.4

646.4

646.4

646.4

646.4

5

13

651.2

651.9

638.1

637.4

637.1

637.3

640.9

640.9

646.4

646.4

646.4

646.4

646.4

646.4

646.4

646.4

4

14

651.2

651.9

638.1

637.4

637.1

637.3

640.9

640.9

646.4

646.4

646.4

646.4

646.4

646.4

646.4

646.4

3

15

651.2

651.9

638.1

637.4

637.1

637.3

640.9

640.9

646.4

646.4

646.4

646.4

646.4

646.4

646.4

646.4

2

16

651.2

651.9

638.1

637.4

637.1

637.3

640.9

640.9

646.4

646.4

646.4

646.4

646.4

646.4

646.4

646.4

1

17

651.2

651.9

638.1

637.4

637.1

637.3

640.9

640.9

646.4

646.4

646.4

646.4

646.4

646.4

646.4

646.4

0

18

651.2

651.9

638.1

637.4

7.2 107.2 100
4.6 107.2 1/4 4.575 102.825

5.7 1/4 107.70 C 1' 8"
5.8 107.11 1/2 C 2' 3/4
5.9 107.10 1/2 C 2' 3"
5.10 107.10 C 2' 3"
4.10 1/2 2 1/4 C 2' 4 3/4
4.11 3 3/4 C 2' 6 1/2
4.12 3 C 2' 6 1/2
5.13 10 3/4 C 2' 2 3/4
5.14 11 1/4 C 2' 3 3/4
5.15 9 1/2 C 2' 2 1/2
5.16 1 1/4 C 2' 3 3/4
6.17 8 1/4 C 1' 2 1/4
5.18 9 1/4 C 2' 3 3/4
5.19 5 1/2 C 2' 3 3/4
5.20 5.5 C 2' 3 3/4

TP 4.4 1/4 106 10 1/4 8 3/4
5.4 107.1 1/4 C 1' 8 1/4
4.5 107.1 1/2 C 2' 9
4.6 107.3 1/4 C 2' 11 1/4

1325
200
125

N

106 10 1/4

17	4 11 1/2	107	10 3/4	99	3 1/2	2	7 1/4
18	4 10	102	1/4	99	3	2	9 1/4
19	6 5	100	5 1/4	99	2 1/2	1	2 3/4
TP	44	106	9 1/4				
20	4 9 1/2	102	1 1/4	99	2	2	10 1/4
21	5 6 3/4	107	2 1/2	99	1 1/2	2	1"
22	5 8 1/2	108	1 3/4	99	10	1	11 3/4
23	5 6 1/4	100	3	99	1/2	2	2 1/2
2	7 10	98	11 1/2				

S 55° 33 W 400
 S 86 30 W 545
 N 260
 858

925.94
 25.0000 2690
 185108
 6489240
 553240
 435986
 83229740

Beginning at S.E. Cor of lot 3
 Sec 16

Thence W 858
 " S 55 33 E 410
 " S 86 30 E 545
 " N 260

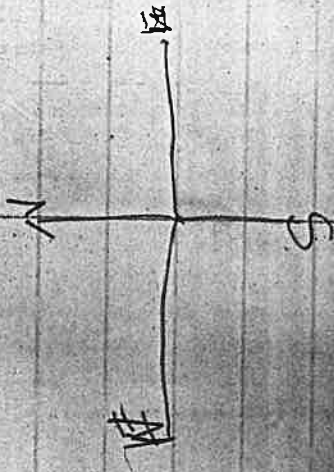
Survey for Warts & Co
Beginning at the S. E. corner of the
Sp. bn 48 7 min W 5.45 to SW
corner of Householder

0046

Begin at intersection of road

~~N~~ 49 30 ~~W~~ 18 30

N 75 40 W 39 0



Began at N.E. corner Holman D.C.
Thence west 25 chs E side Co. Road
" " 40 lbs to Can " "

0047

[Faint, illegible handwriting on lined paper]

Survey for THE COBBREAL ESTATE CO. Jan 18 09

Began Survey at R.R. Rto W. Way
 on Sec. line bet Secs 14 + 23 T 28 - 6
 Thence E at 24.33^{ch}, fell 88 lbs Sand
 A corner to 13 T 14 23 + 24 ch
 Thence N across Prop. at 2590^{ch} lot
 N line Porz nagle Claim
 Thence E 430.3 ft or 152 ch to
 East line of 106 acres lot.
 Began at Bee cor as above
 thence East 430.3 ft and
 set S E Cor of 106 acre lot A-1
 on this line bet stakes at 312 ft
 on E side road
 at 430.3 ft from sec cor
 Turn to left from E side of
 106 acre lot 290^{ch} 45' or 529.45' E
 then or turn to left 48° 52' or 78.37 E.
 N angle 578 1/2 E

3433
 635
 40.68
 2590
 366120
 20340
 8136
 105.36120
 2225
 8311 2590

10000
 8811
 16840
 15540
 13500
 12950
 25500
 23310
 21700

2590
 66
 15340
 15340
 170940

6.6
 6.6
 346
 346
 435.6
 29632

159
 1684
 16340
 12850
 518
 5320

15.9
 65.3
 81.2
 12.9
 96
 15
 15

12.9
 96
 15
 15

9756
 20000
 19512
 48401

20000
 6.599

652
 3912

6.521

15.9
 65.3

7837
847
25
81

Thence S 78° 37' E from point 2

330 ft point N° 3

330 " " N° 4

330 " " N° 5

50 " but Res nagle line

330 " " N° 6

330 " " N° 7

330 " " N° 8

330 " " N° 9

330 " " N° 10

330 " " N° 11

7837
847
81
25

turn to left 8° 48' from A-71

330 ft * N° 12 3314

299.6 " N° 13

turn to left 35° 49' from A-13

330 ft * Δ N° 14 from A-14

turn to RT 11° 03' N 68° E Need

330 to Δ-15

330 " Δ-16

330 " Δ-17

66) 1874 | 2.4
1324
550
2260

330
309
2996

0049
378
2310
187
2497

330 - (1 Δ - 18) 66) 2450 | 37
198
470

330 - Δ - 19

330 - Δ - 20
tran from Δ - 20 9° 31' Rt N 78 E

~~210~~ 210 to Curb 944) 2000 | 20.2
1977.6
22400

330 to Δ - 21
time from Δ - 21 4' 05" N 74 1/4 E
~~0~~ Rt.

330 to Δ - 22

330 to Δ - 23

330 to Δ - 24 944) 2000 | 20.02
1994.0
2000

330 .. Δ - 25

330 .. Δ - 26 8364 | 20000 | 2
16728
32720

330 .. Δ - 27

330 .. Δ - 28

127.5 Δ - 29 on just Rob E line

thence S along Rob line 21.42'

8364) 20000 | 23.9
16728
32720
23092
7628

2211 | 216
2000
1852
148
926
3541

Begin at N.E. Cor Lot A (100 A)

thence E 462' for lot 1 B1

" " E 309 1/2 " " 2 B1

" " E 309 1/2 " " 3 B1

" N 301

" E 375 " " 4 B1

" E 360 " " 5 B1

" E 330 " " 6 B1

" E 330 " " 7 B1

" E 320 " " 8 "

" E 310 " " 9 "

" E 300 " " 10 "

E 175 to edge of timber

E 325 " " 11

E 350 " " 12

S from ^{bet} L 12 + 13 2450 to road

thence N 68 E ^{needle} 130 to Δ-15

E 363 for lot 13

E 396 " " 14

E 429 " " 15

$$\begin{array}{r}
 2590 \\
 \underline{100} \\
 2740 \\
 \underline{327} \\
 3067 \\
 \underline{420} \\
 3520
 \end{array}$$

$$\begin{array}{r}
 462 \\
 309\frac{1}{2} \\
 309\frac{1}{2} \\
 \hline
 66 \overline{) 1081} \quad (16.4 \\
 \underline{66} \\
 421 \\
 \underline{396} \\
 250
 \end{array}$$

$$\begin{array}{r}
 3090 \quad (20000 \\
 \underline{18420} \\
 11580
 \end{array}$$

$$\begin{array}{r}
 3520 \quad (20000 \\
 \underline{17600} \\
 24000 \\
 \underline{24640} \\
 3560
 \end{array}$$

$$\begin{array}{r}
 9803 \overline{) 37500} \quad (382.5 \\
 \underline{29409} \\
 80910 \\
 \underline{76424} \\
 24860 \\
 \underline{19606} \\
 52581 \\
 \underline{375} \\
 260 \\
 \underline{380} \\
 2146
 \end{array}$$

$$\begin{array}{r}
 57 \\
 \underline{66} \\
 342 \\
 \underline{342} \\
 3762
 \end{array}$$

$$\begin{array}{r}
 66 \overline{) 2146} \quad (34 \\
 \underline{198} \\
 266
 \end{array}$$

$$\begin{array}{r}
 2740 \\
 \underline{678} \\
 450 \\
 \underline{3868} \\
 62
 \end{array}$$

$$\begin{array}{r}
 3828 \overline{) 20000} \quad (5.2 \\
 \underline{19340} \\
 660 \\
 \underline{660} \\
 0 \\
 \underline{312} \\
 343
 \end{array}$$

$$\begin{array}{r}
 2145 \\
 \underline{630} \\
 66 \overline{) 2776} \quad (42 \\
 \underline{264} \\
 136
 \end{array}$$

462

E₁ for lot 16

E 478 1/2 for " 17

E 462 " " 18

E 445 1/2 " " 19

E ~~440~~ 440 " 20

E 429 " " 21

~~E 422 ⁴ " " 22~~

~~E 418 " " 23~~

~~E 412 " " 24~~

~~E 416 " " 25~~

E 460 to E line Jess Rob Claim

7.00
6.10
13.10

2000.00
2960.00
339.00
394.00
1880



$$\begin{aligned} \cos A &= \frac{y}{x} \\ x \cos A &= y \\ x &= \frac{y}{\cos A} \end{aligned}$$

66.2 | 13.10
13.2

2835

10446
0051
14271
7136
7135
328

Began at Δ-2 N

thence	along	road	line	413.2	L 1	B1
"	"	"	"	315.7	L 2	"
"	"	"	"	315.7	L 3	"
"	"	"	"	382.5	" 4	"
"	"	"	"	367.2	" 5	"
"	"	"	"	336.6	" 6	"
"	"	"	"	336.6	" 7	"
"	"	3	"	326.6	" 8	"
"	"	"	"	175.9	" Δ 11	"
"	"	"	"	(139.4) ^{conv}	"	"
"	"	"	"	197.7	" L 9	"
"	"	"	"	300.3	" L 10	"
"	"	"	"	181.6	" Δ 13	"
"	"	"	"	171.7	" L 11	"
"	"	"	"	158.3	" Δ 14	"
"	"	"	"	235.0	" L 12	"
"	"	"	"	392.0	" L 13	"
"	"	"	"	427.7	" L 14	"
"	"	"	"	463.4	" L 15	"
"	"	"	"	461.9	" Δ 20	"

thive along road 352 ft to L 16
 " " 244.8 to Δ 21
 " " 143.1 " L 17
 " " 463.1 " L 18
 " " 450.6 " L 19
 " " 445.0 " L 20
 " " 433.9 " L 21
 " " 465.2 " L 22
 " " 451.2

Computed dist.

Chained

Geo. Rob. Clume

11 thives N 1347 to N E cor
 18 Begmat see cor. for 18 14
 23 Feb 4 thive S 4050
 and fell 31 lbs E 9 1/4 cor
 11 at 20 25 set 2" x 2" x 2' for
 stake from which
 Wood 8" dia N 12 1/4 E 8 1/2
 W 1 1 9 " S 13 1/2 E 22
 Thive E 1 1/4 chd and set
 traps on householder's line

145.8
567.8
713.6

Beginning at the S E cor L1
B2 thence

N 4 69.1 to new pin (Nance.) cor
S side of Co Road 5.197 ft

N side of Co Road

hit Creek at 590 Lower C at 7.90

14.42 to Center of Boulevard

thence W 145.8 to No 3 0

Angle turned from Calbe road to line 79.10
or 100.50

thence S 78 87 E 567.8 to line bet. 344

B2

South bet L 344 B2, 650.70 to CR 970.4 N
N 52° 10' W

thence down Road, 711 1/2 ft to cor of
L 172

thence ,, ,, N 53 10 W 286.8

,, ,, N 66 00 W 158

,, ,, N 13 12 W 6.52.3 to

the stake set on S side L A

312 ft from S E cor.

330
145.6
567.9
1043.6

567.9
330
145.6
1043.6

14271
1043.6
383.0053

Began at point set 312 ft E of sec
con. thence S $15^{\circ}20' E$ 70 to
intersection of Co Road and Colles
road

Began at cor L ~~445~~³⁺⁴ thence along
Colles road S $78^{\circ}37' E$ ~~400~~^{382.5} ft to 4+5
thence S set L 445 S $75^{\circ} CK$ 1066 \wedge
to e end of Road

" S $78^{\circ}37' E$ 367.2 ft to 5+6
mid of Road

" S set L 5+6 475 to Creek 1140 \wedge

thence 77 ft to Cooper's oak tree

" S $78^{\circ}37' E$ 450 ft to 6+7

" S set 6+7 415 to Creek 960 to Cooper's
thence

thence westerly 34 ft to Angle N^o 7

" S $78^{\circ}37' E$ 500 ft to 7+8

" S. set 7+8 400 ft Creek 848 $\frac{1}{2}$ to fence

thence Easterly 142 to Angle N^o 2

" S $78^{\circ}37' E$ 224 $\frac{1}{2}$ to A-17

" " " " " 375 $\frac{1}{2}$ " 8+9

thence S 375 to Creek 702 $\frac{1}{2}$ to fence
set 8+9

thence West 153 $\frac{1}{2}$ to Angle 3

Began at L 879 on Boulevard
 thence along road 253 1/2 to Δ-13
 " " " 329.4 " Δ-14
 " " " 235 " 9 + 10
 " S bet 9 + 10 490 Creek 896 to fence
 " along road 500 to 10 + 11
 " S bet 10 + 11, 510 Creek 1035 to fence
 " along road 550 to 11 + 12
 " S bet 11 + 12 375 to Creek 119.5
 thence along fence ^{Prob-Claim} E 65 ft to L cor
 " along road 364.3 ft 12 + 13 also Δ-19
 S bet 12 + 13 300 ft Creek
 " along road to 331 to Δ-20
 " " " 263 " 13 + 14
 " " " 67.2 Δ-21
 " " " 807.2 to 14 + 15
 " S bet 14 + 15
 " along road 460 to 15 + 16
 " S bet 15 + 16 782 ft to cor
 of 16 + 17

(changed)
 thence S cut 15 + 17 893 to fence
 " E 90.7 ft to previous Survey
 Begun at cor. for 16 17 on ^E line of
 15 thence E 982 to E line Prob
 D.P.C.

187.8 to 15 + 16 from A-26

660
 187.8
 1275
 975.3

Feb 3 - 09

Survey for Al. Creason

Req at $\frac{1}{4}$ cor. bet 7 and 8 T. 29-5
thence E. 13.50 chs to B.O. 24" in top of ridge

Req at pt 2nd chs. W. of cor. of 7-8-17-18

Fence running E. at 4.25 N of
government reserve cor. = 14.25 N of $\frac{1}{4}$ cor

or
$$\begin{array}{r} 40.00 \\ 14.25 \\ \hline 25.75 \end{array}$$

Feb. 11 - 09

0056

Levels from U.S. B.M. at
Whitman to intersection of center line
of Central Ave. Elev of B.M. 538.00

B. S. F. S.

4.55 4.93

3.70 6.99

2.72 6.77

3.14 6.67

2.94 6.67

3.82 6.18

3.75 5.70

24.62 43.91

24.62

19.29

45
66
270
27
297

Across st from N E cor 03

1059 ft to 1/4 cor lect 16.817

or from N Side of B.s. 33, 38, 6 to Rft

50° 15' Needle N 26 10 E

77.04
50.10
26.94

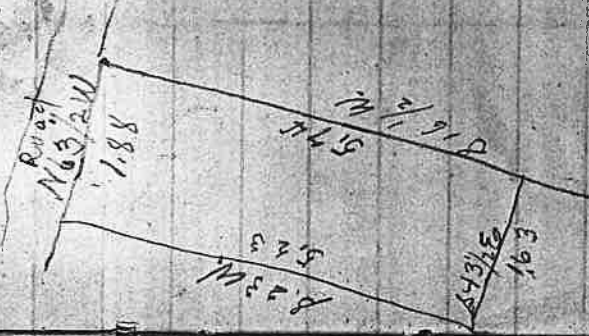
66 | 1659 | 16.04
66
399
399
300

Sept. 15-09
 Survey for John Hall

Beg at N.W. cor. of Middle Heights
 Add to Myrtle ck. thence S. 89° 30' W
 10.67 chs. to 1/4 cor. bet sees 2 and 28.
 S. 29 S. R. 5 W. thence South 6.35 chs
 to R.R. right of way.
 Return to N.W. cor. of M. H. add and run
 S. 15° W. 5.44 chs. to N. line of Seligo tract
 thence N 63 1/2° W. 0.93 chs. along said N. line
 " S. 23° W. 5.23 chs " " W. " "
 " S. 43 1/2° E 178. To corner Park add.
 " along same to R.R. right of way
 " along R.R. 7.

0058

Seligo Tract



158
 163
 2 357
 175
 528
 574
 2 1097
 548
 178
 2740
 3836
 548
 959.00

0059

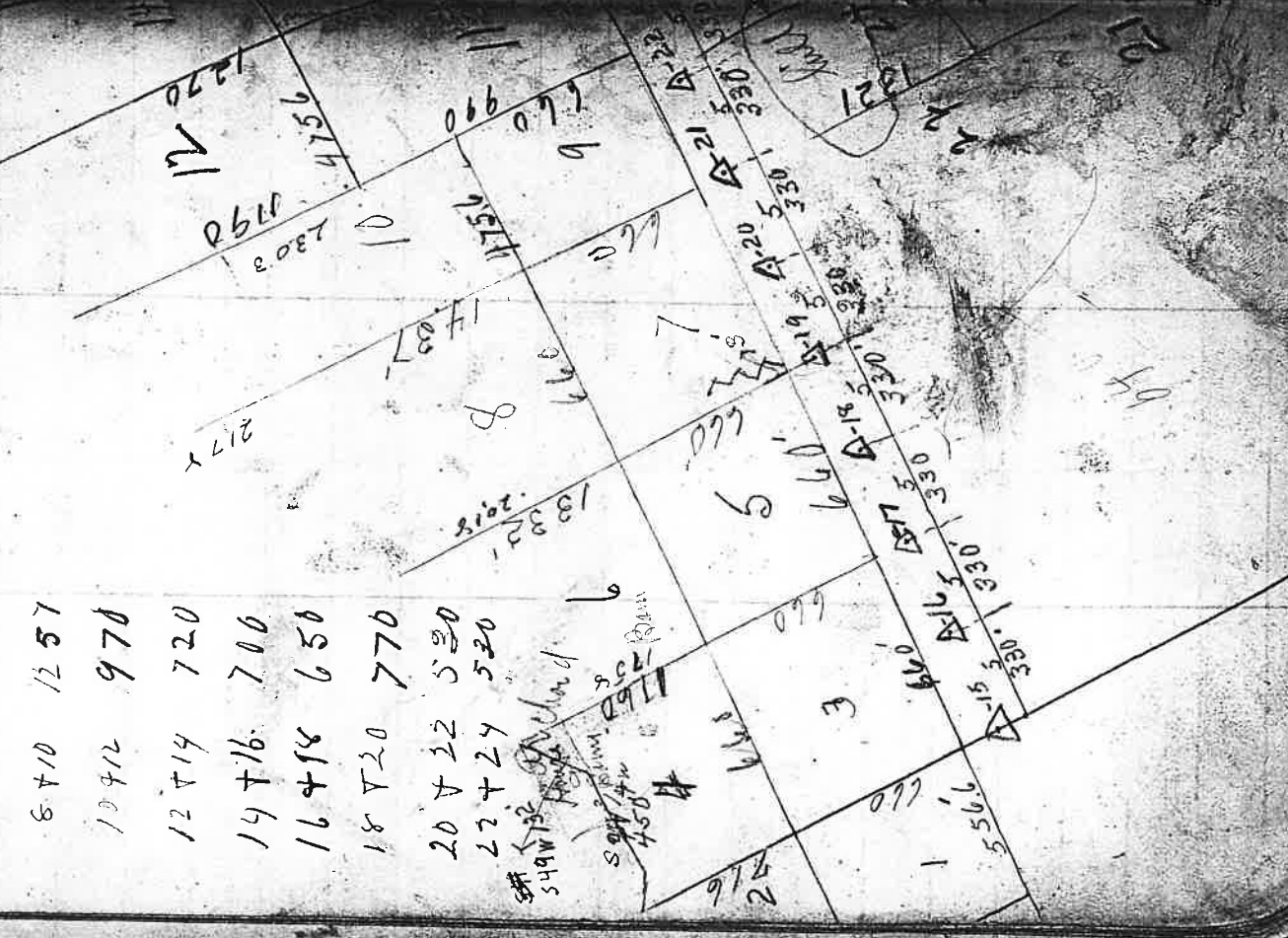
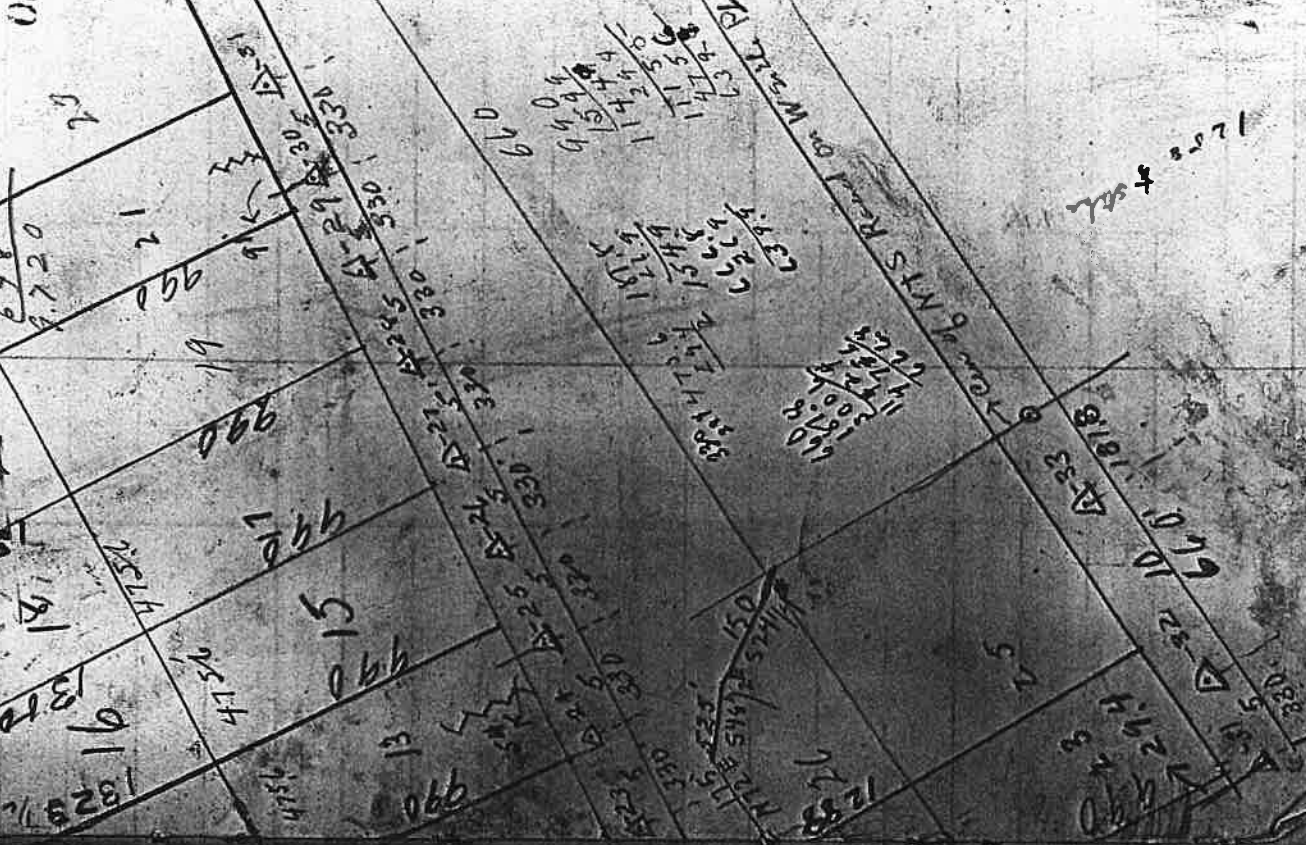


Field Book No. 23

No Page 61

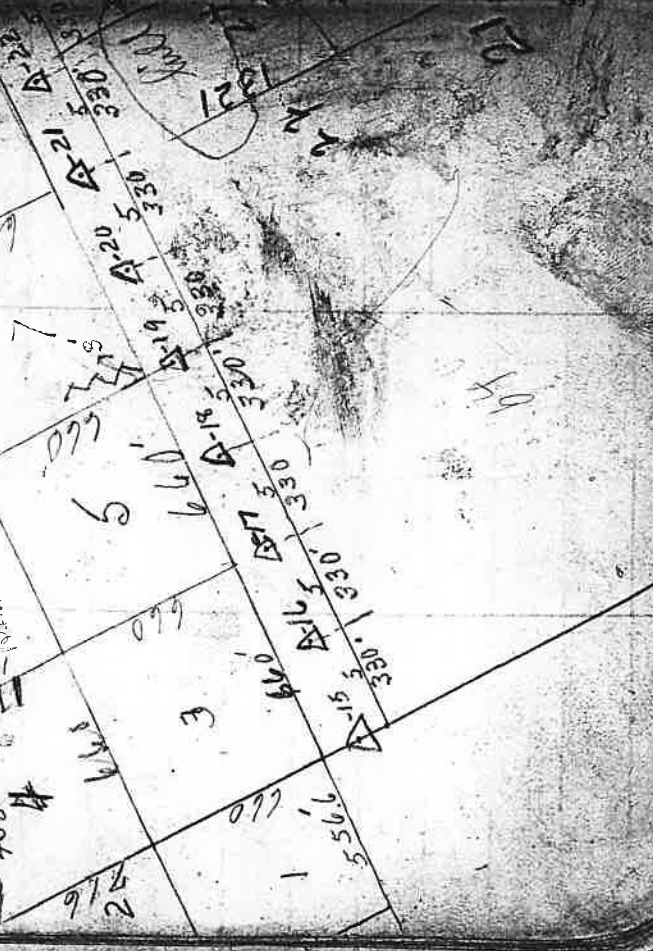
0062

Brown Island
15
1360
20
181
1823 1/2
1323 1/2



- 99 1/2
- 475 1/2
- 6 + 8 1242
- 8 + 10 1257
- 10 + 12 970
- 12 + 14 720
- 14 + 16 700
- 16 + 18 650
- 18 + 20 770
- 20 + 22 530
- 22 + 24 520

549 1/2
594 1/2
450
Brown Island



1258 + 1257

1258
1257
1256
1255
1254
1253
1252
1251
1250
1249
1248
1247
1246
1245
1244
1243
1242
1241
1240
1239
1238
1237
1236
1235
1234
1233
1232
1231
1230
1229
1228
1227
1226
1225
1224
1223
1222
1221
1220
1219
1218
1217
1216
1215
1214
1213
1212
1211
1210
1209
1208
1207
1206
1205
1204
1203
1202
1201
1200
1199
1198
1197
1196
1195
1194
1193
1192
1191
1190
1189
1188
1187
1186
1185
1184
1183
1182
1181
1180
1179
1178
1177
1176
1175
1174
1173
1172
1171
1170
1169
1168
1167
1166
1165
1164
1163
1162
1161
1160
1159
1158
1157
1156
1155
1154
1153
1152
1151
1150
1149
1148
1147
1146
1145
1144
1143
1142
1141
1140
1139
1138
1137
1136
1135
1134
1133
1132
1131
1130
1129
1128
1127
1126
1125
1124
1123
1122
1121
1120
1119
1118
1117
1116
1115
1114
1113
1112
1111
1110
1109
1108
1107
1106
1105
1104
1103
1102
1101
1100
1099
1098
1097
1096
1095
1094
1093
1092
1091
1090
1089
1088
1087
1086
1085
1084
1083
1082
1081
1080
1079
1078
1077
1076
1075
1074
1073
1072
1071
1070
1069
1068
1067
1066
1065
1064
1063
1062
1061
1060
1059
1058
1057
1056
1055
1054
1053
1052
1051
1050
1049
1048
1047
1046
1045
1044
1043
1042
1041
1040
1039
1038
1037
1036
1035
1034
1033
1032
1031
1030
1029
1028
1027
1026
1025
1024
1023
1022
1021
1020
1019
1018
1017
1016
1015
1014
1013
1012
1011
1010
1009
1008
1007
1006
1005
1004
1003
1002
1001
1000
999
998
997
996
995
994
993
992
991
990
989
988
987
986
985
984
983
982
981
980
979
978
977
976
975
974
973
972
971
970
969
968
967
966
965
964
963
962
961
960
959
958
957
956
955
954
953
952
951
950
949
948
947
946
945
944
943
942
941
940
939
938
937
936
935
934
933
932
931
930
929
928
927
926
925
924
923
922
921
920
919
918
917
916
915
914
913
912
911
910
909
908
907
906
905
904
903
902
901
900
899
898
897
896
895
894
893
892
891
890
889
888
887
886
885
884
883
882
881
880
879
878
877
876
875
874
873
872
871
870
869
868
867
866
865
864
863
862
861
860
859
858
857
856
855
854
853
852
851
850
849
848
847
846
845
844
843
842
841
840
839
838
837
836
835
834
833
832
831
830
829
828
827
826
825
824
823
822
821
820
819
818
817
816
815
814
813
812
811
810
809
808
807
806
805
804
803
802
801
800
799
798
797
796
795
794
793
792
791
790
789
788
787
786
785
784
783
782
781
780
779
778
777
776
775
774
773
772
771
770
769
768
767
766
765
764
763
762
761
760
759
758
757
756
755
754
753
752
751
750
749
748
747
746
745
744
743
742
741
740
739
738
737
736
735
734
733
732
731
730
729
728
727
726
725
724
723
722
721
720
719
718
717
716
715
714
713
712
711
710
709
708
707
706
705
704
703
702
701
700
699
698
697
696
695
694
693
692
691
690
689
688
687
686
685
684
683
682
681
680
679
678
677
676
675
674
673
672
671
670
669
668
667
666
665
664
663
662
661
660
659
658
657
656
655
654
653
652
651
650
649
648
647
646
645
644
643
642
641
640
639
638
637
636
635
634
633
632
631
630
629
628
627
626
625
624
623
622
621
620
619
618
617
616
615
614
613
612
611
610
609
608
607
606
605
604
603
602
601
600
599
598
597
596
595
594
593
592
591
590
589
588
587
586
585
584
583
582
581
580
579
578
577
576
575
574
573
572
571
570
569
568
567
566
565
564
563
562
561
560
559
558
557
556
555
554
553
552
551
550
549
548
547
546
545
544
543
542
541
540
539
538
537
536
535
534
533
532
531
530
529
528
527
526
525
524
523
522
521
520
519
518
517
516
515
514
513
512
511
510
509
508
507
506
505
504
503
502
501
500
499
498
497
496
495
494
493
492
491
490
489
488
487
486
485
484
483
482
481
480
479
478
477
476
475
474
473
472
471
470
469
468
467
466
465
464
463
462
461
460
459
458
457
456
455
454
453
452
451
450

0063

462

$$\begin{array}{r}
 20.72 \\
 \underline{43236} \\
 43236 \\
 \underline{475596}
 \end{array}$$

7246

$$\begin{array}{r}
 66666666 \\
 647888 \\
 \underline{187888} \\
 86108 \\
 \underline{27786} \\
 324
 \end{array}$$

9254

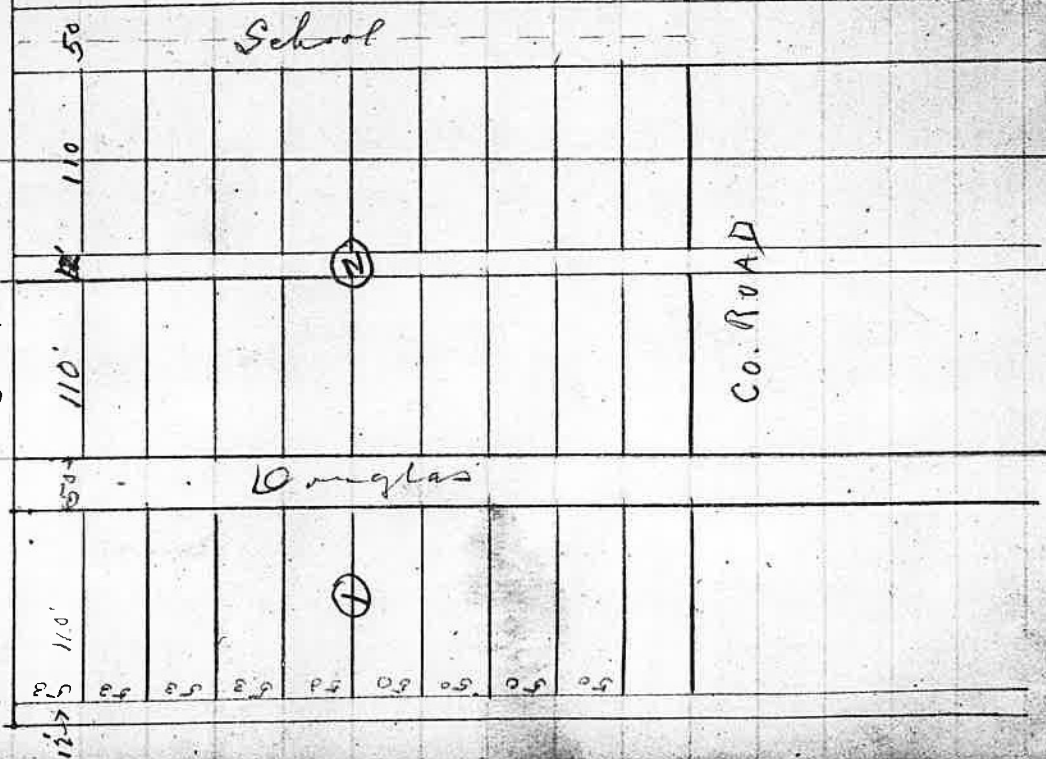
$$\begin{array}{r}
 9254 \\
 \underline{187888} \\
 86108 \\
 \underline{27786} \\
 324
 \end{array}$$

Armed and Nelson
Supt. Fred.

C. H. Arundel
Francis H. "

C. O. Nelson
Lizzie "

STREET



School
5-10-1000

School

Co. Road

Douglas

528'



132

182 3/4
165
17 3/4

46 | 429 | 65
396 | 55
330 500

17.00
102.00
102
1.122
1524
1304

146
1450
13

467
110
100

364

68

12/5

0065

8.39 / 5000 598
 598 / 4198 8050
 6712 / 7407
 7551 / 6430
 4198 / 6712
 301722

17.94
 530
 2324

163

36

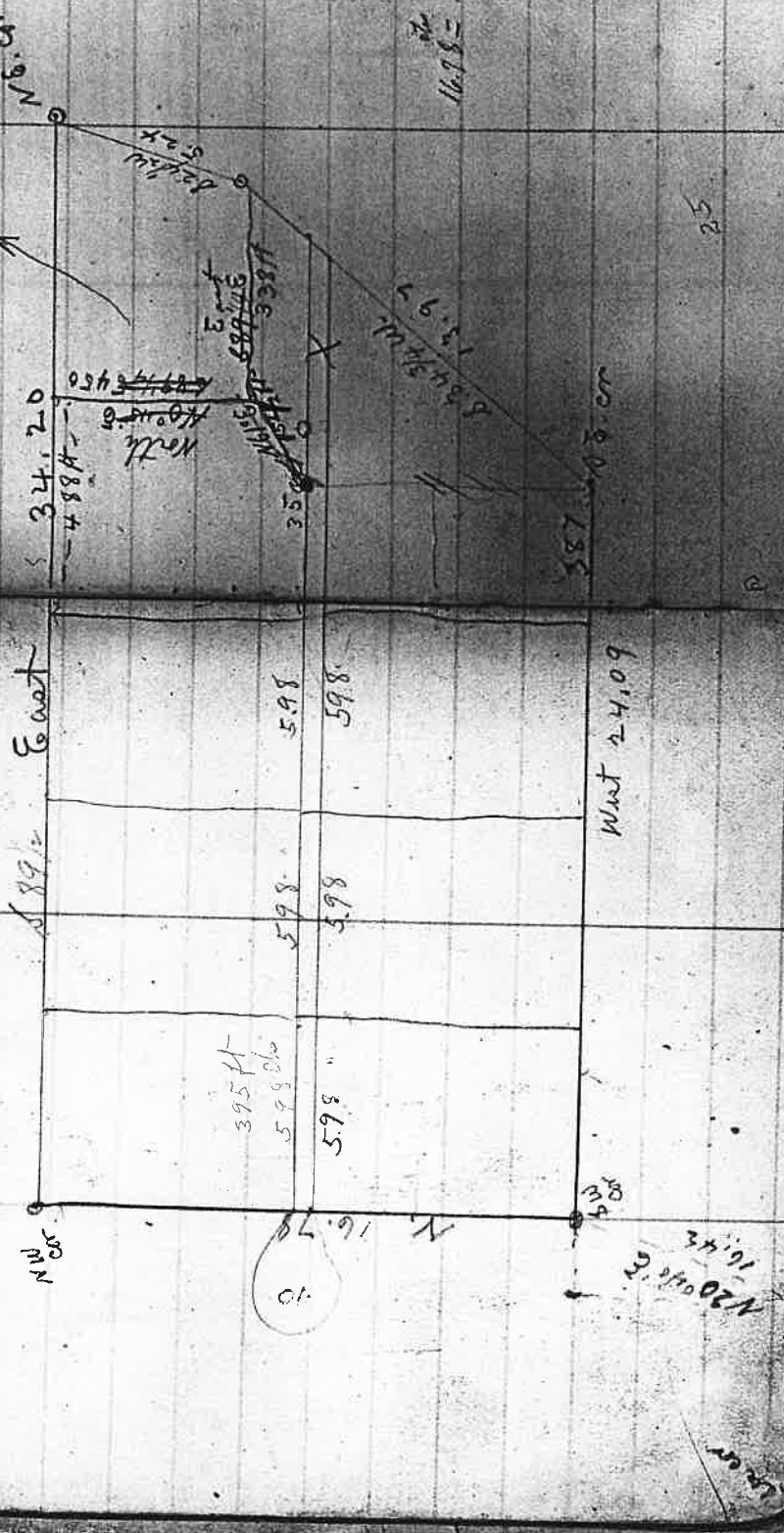
378

598
 3687
 3588
 39468

SW. cor. B.O. 8" S 30 W. 14 2nd W.O. 12 N 12 W. 46
 NW. cor. iron rods, W.O. 7' 8.15 W 8 2nd Laurel 10 S 55 E 663
 NE cor. part in road Laurel 10 N 40 E 33 2nd W.O. 12 S 55 E 85
 SE cor. " " 36 N 34 W 296 2nd iron pin

50.59 acres

Myrtle Fruit Land
 G.H. Johnson Jr. M. Chan



West 24.09

1107 1/2 ft

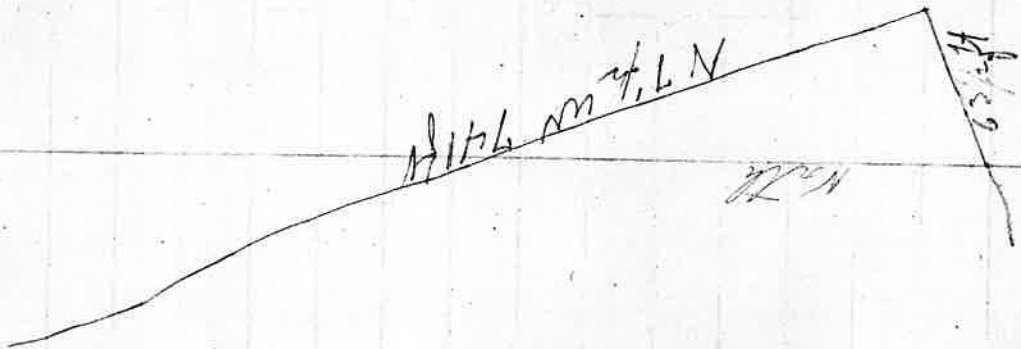
25

598

1916

1916

9900



Mar. 27-79

Utah

Beach of S.W. cor. base of Boyard

B.O. 18" N 61' W. 25' W

0067

96
8968

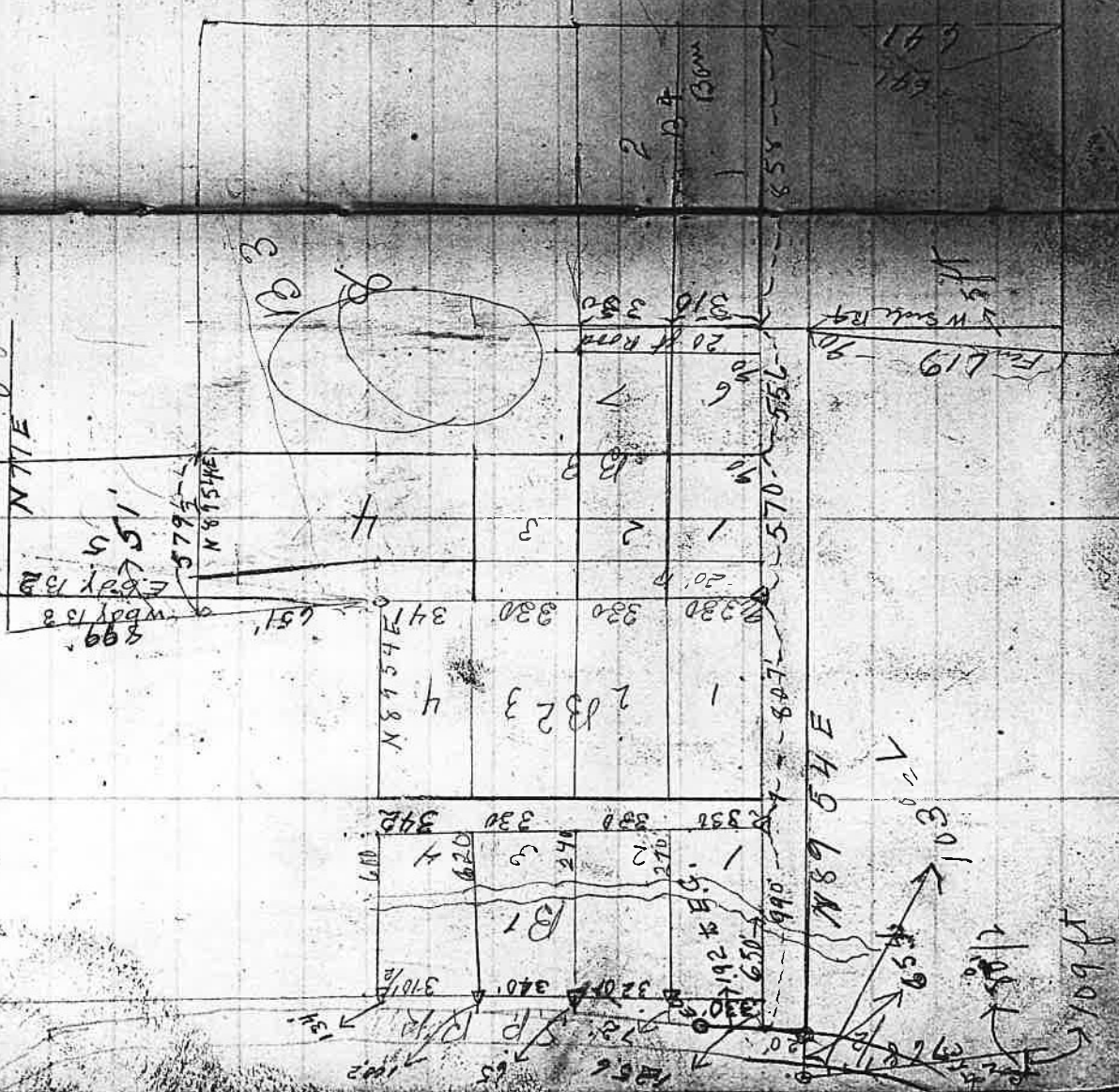
E from S.P. R.R. 650 to Cen of Creek 990 A-1
S side of
N from 20 road 1300.5 ft to N side of plot

651 95.64
 594
 570
 528
 420
 396
 240

8000.9864
 8000
 18640
 110000
 264000

1233 119.61 980 11
 119
 11097
 1233
 1233
 146727

61
 12
 748
 708
 629
 629
 641



650
 564
 641
 641
 659
 109 ft
 109 ft
 109 ft

109 ft
 109 ft
 109 ft

Field Book No. 23

Pages 68A - 73A Blank

$$\begin{array}{r} 31916 \\ 400 \\ \hline 144 \overline{) 2516400} \quad 8.7 \\ \underline{1152} \\ 1046 \end{array}$$

0074

1165

$$\begin{array}{r}
 92718 \\
 1534 \frac{1}{2} \\
 \hline
 46359 \\
 370872 \\
 463590 \\
 92718 \\
 \hline
 14.4130131
 \end{array}$$

.0741



$$\cos A = \frac{m}{x}$$

$$.0741) \frac{14.41}{741} \\ \hline 7000$$

$$\begin{array}{r}
 94656) 144130 \\
 \underline{94652} \\
 44740 \\
 \underline{398624} \\
 461160 \\
 \underline{398624} \\
 625360
 \end{array}$$

14.46

$$\begin{array}{r} 343^2 \\ 343^2 \\ \hline 3396 \\ 66 \overline{) 18260} \quad (13545 \\ \hline 366 \\ \hline 330 \\ \hline 360 \\ \hline 380 \\ \hline 380 \\ \hline 364 \\ \hline 360 \end{array}$$

$$\begin{array}{r} 66 \\ \hline 32 \\ \hline 132 \\ \hline 330 \\ \hline 343^2 \\ \hline 40^2 \\ \hline 3432 \\ \hline 1188 \end{array}$$

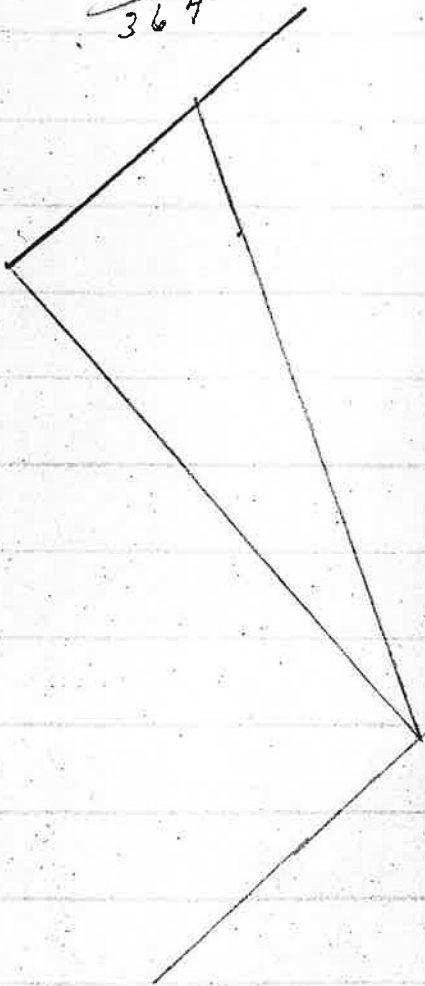
$$\begin{array}{r} 92718 \overline{) 500000} \\ \hline 5900 \\ \hline 963590 \\ \hline 364100 \end{array} \quad 5.4$$



$$\begin{aligned} \cos A &= \frac{x}{2} \\ 2 \cos A &= x \\ z &= \frac{x}{\cos A} \end{aligned}$$

$$\begin{array}{r} 927 \overline{) 300000} \\ \hline 2781 \\ \hline 2190 \\ \hline 1434 \\ \hline 3360 \\ \hline 2781 \\ \hline 5790 \end{array}$$

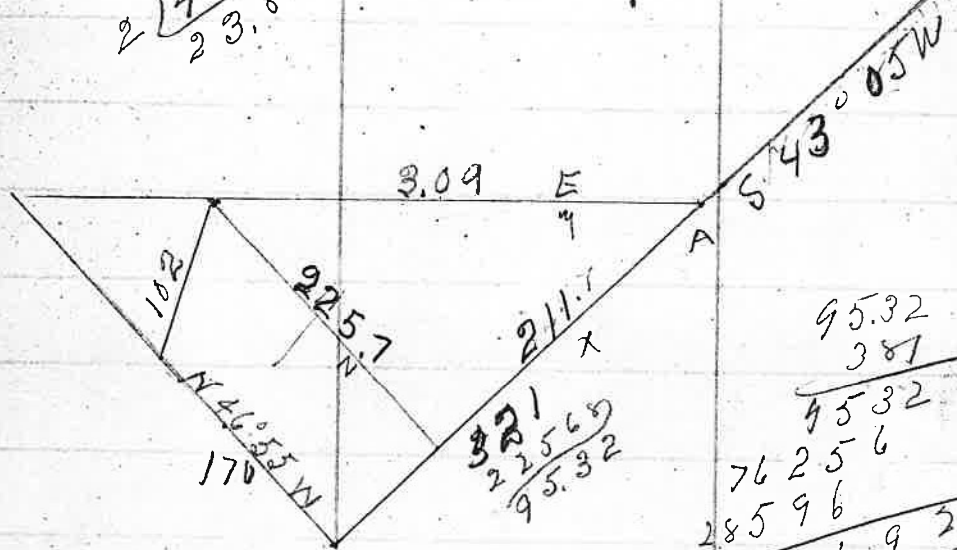
32.36



$$\begin{array}{r} 850 \\ \hline 825 \\ \hline 25 \\ \hline 85 \end{array} \quad \begin{array}{r} 37.0 \\ \hline 35 \\ \hline 110 \\ \hline 10 \\ \hline 250 \\ \hline 40 \\ \hline 815 \end{array}$$

$$\begin{array}{r} 22568 \\ \underline{211} \\ 22568 \\ \underline{22568} \\ 4513648 \\ \underline{4761848} \\ 2380924 \end{array}$$

$$\begin{array}{r} 462 \\ 550 \\ 19 \\ \hline 66 \overline{)1026} \quad (15545 \\ \underline{66} \\ 211366 \\ \underline{170} \quad 330 \\ 381 \quad 360 \\ \underline{330} \\ 300 \\ \underline{264} \\ 360 \end{array}$$



$$\sin A = \frac{z}{y} \quad \text{y} \sin A = z$$

$$\cos A = \frac{x}{y} \quad \text{y} \cos A = x$$

$$\begin{array}{r} 95.32 \\ \underline{381} \\ 4532 \\ 76256 \\ \hline 28596 \\ \hline 3631692 \\ \underline{1815846} \checkmark \\ 2380924 \\ \hline 4195770 \end{array}$$

$$\begin{array}{r} 2 \overline{)381} \\ \underline{1405} \\ 9532 \\ \underline{3810} \\ 5715 \\ \underline{9525} \\ 17145 \\ \underline{18158} \\ 1815846 \end{array}$$

$$\begin{array}{r} 73026 \\ \underline{304} \\ 657324 \\ \underline{219108} \\ 22568124 \end{array}$$

$$\begin{array}{r} 683 \\ \underline{309} \\ 6147 \\ \underline{2049} \\ 9211047 \end{array}$$

$$\begin{array}{r} 435.60 \\ \underline{418577} \\ 392040 \\ \underline{275370} \end{array}$$

66 / 100

008

$$\begin{array}{r}
 66 \overline{) 102} \quad (1.54 \\
 \underline{66} \\
 360 \\
 \underline{330} \\
 300 \\
 \underline{264} \\
 360
 \end{array}$$

321
6

$$66 \overline{) 170} \quad (2.57 \\
 \underline{132} \\
 380 \\
 \underline{330} \\
 500 \\
 \underline{462}$$

$$66 \overline{) 321} \quad (4 \\
 \underline{264} \\
 57$$

4655

500
462

$$5 \overline{) 47} \\
 \underline{96}$$

47 - 4

96

374 - 5

96

278 - 4

96

172 - 3

96

76 - 2

$$66 \overline{) 321} \quad (486 \\
 \underline{264} \\
 570 \\
 \underline{528} \\
 420$$

6

$$66 \overline{) 309} \quad (4683 \\
 \underline{264} \\
 450 \\
 \underline{396} \\
 540 \\
 \underline{6147} \\
 2049 \\
 \underline{211047}$$

$$\begin{array}{r}
 730 \\
 309 \\
 \hline
 6570 \\
 2140 \\
 \hline
 225370
 \end{array}$$

24.00
26

$$\begin{array}{r}
 2257 \\
 170 \\
 \hline
 2 \overline{) 3157} \\
 \underline{1978} \\
 1170
 \end{array}$$

2409
2620
2/5059
2530
4
1000

$$\begin{array}{r}
 2257 \\
 211 \\
 \hline
 2257 \\
 2257 \\
 \hline
 451425 \\
 2 \overline{) 476225} \\
 \underline{238} \\
 21758 \\
 \underline{45569} \\
 42560 \\
 \underline{200925}
 \end{array}$$

(1.44

4132
 3157
 3157

66 / 140 (2.2)
 $\frac{132}{80}$
 $\frac{66}{140}$

750
 $\frac{66}{4500}$
 $\frac{4500}{49500}$

13355
 1283
 13 | 26185
 $\frac{130925}{75}$
 $\frac{634625}{916475}$
 $\frac{9.819373}{14}$

7
 44
 $\frac{2}{31}$

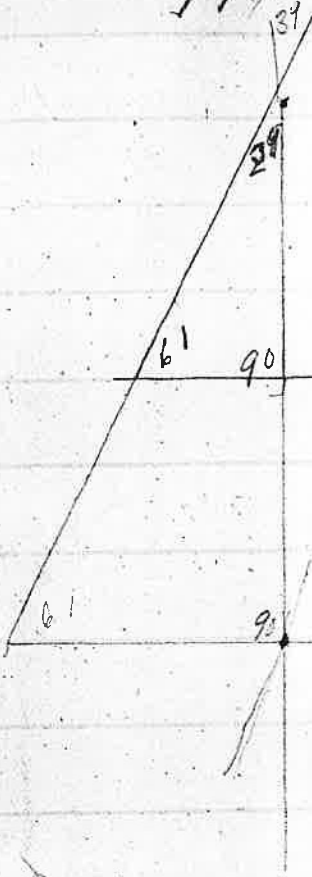
13.28
 $\frac{51}{13.87}$
 $\frac{13.36}{2 | 2723}$
 $\frac{13.1151}{3279}$
 $\frac{91803}{4.50}$

$\frac{14}{28}$
 1335.5
 $\frac{81.4}{13873}$
 $\frac{13885}{27228}$

13114
 $\frac{79}{52556}$
 $\frac{91798}{9704}$

$$\begin{array}{r} 57 \\ 264 \\ \hline 774 \end{array}$$

$$\begin{array}{r} 61 \\ 29 \\ \hline 90 \\ 180 \end{array}$$



$$\begin{array}{r} 9545 \\ 13465 \\ \hline 2303 \end{array}$$

$$\begin{array}{r} 2303 \\ 19373 \\ \hline 160 \end{array}$$

$$\begin{array}{r} 1240 \\ 1164 \\ \hline 76 \end{array}$$

$$\begin{array}{r} 22308 \\ 11432 \\ \hline 10876 \end{array}$$

$$\begin{array}{r} 34 \\ 3 \end{array}$$

$$\begin{array}{r} 5345 \text{ (808)} \\ 528 \\ \hline 113 \\ 490 \end{array}$$

W. H. Maxwell Room 23 Reeling
 C. H. Wilson 109 Sec. St. Room 4

W. R. McGary

Maxwell Tract Lands in Chemung Park

66 | 1332
 1372
 202

1437 | 218
 132 | 202
 117 | 420

23

750 | 493
 541
 1283
 1335.0

44
 1253
 1332
 1183
 2615

1307
 9.147

7.750078
 7.65
 15.40

23
 15.40
 7.60

1443
 1283
 2726
 1335

10000
 264
 8981

12.83

60
 75
 135

7.6
 .07
 12090
 10264
 532

7.70
 .07
 3390

12.83
 54
 1337
 1283
 2620

23
 1.60
 1380
 2
 3.6.80

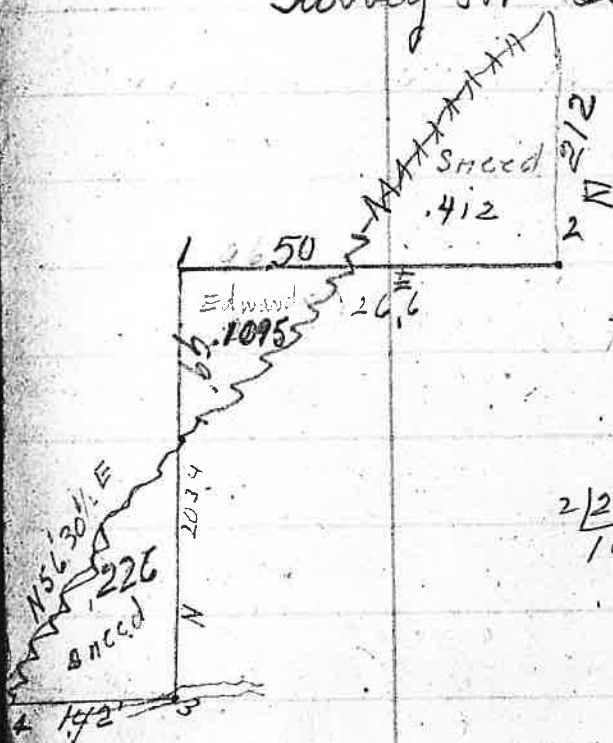
1863
 23
 4089

1810
 77
 9170
 9170
 27264
 31349
 76.0870

1837
 23
 1890

1837
 1727
 13635
 81816
 95445
 16.36260

Survey for Sneed & Edwards



61
66
346
346
4356

261
9650
16950
1.16
101780
16950
17967000 (412)
174240
54300
43510
07400

73510
2 | 212
106

3.21

26) 266 (40?)
264
200

66) 203.4
198
5.40
328
120

3.08
99
209

403
146
257
321
237
514

66) 142 (215)
132
100
60
340

771
2 | 8.2497
4.1248

204
213
1045
204
418
214933
2246

146
150
146
150
7300
146
2 | 21800
1095

Dec. 1 '08

0080

Survey for Clay Smith Winston

S. body. Brickford place



$$\begin{array}{r} 726.5 \\ 504.5 \\ \hline 331 \end{array}$$

$$\begin{array}{r} 1981 \\ 697 \\ \hline 2678 \end{array}$$

$$\begin{array}{r} 1981 \\ 697 \\ \hline 2678 \end{array}$$

1/4 corner cut 15 1/2'

$$\begin{array}{r} 1140 \\ 224 \frac{1}{2} \\ \hline 1364 \frac{1}{2} \\ 1364 \frac{1}{2} \\ \hline 482 \frac{1}{2} \end{array}$$

5

$$\begin{array}{r} 380 \\ 224 \frac{1}{2} \\ \hline 604 \frac{1}{2} \end{array}$$

$$\begin{array}{r} 1364 \frac{1}{2} \\ 604 \frac{1}{2} \\ \hline 160 \end{array}$$

$$\begin{array}{r} 726.5 \\ 160 \\ \hline 756.5 \end{array}$$

66) 495
461
330

529
121

927
21
927
1434
9467

S 77 04 W 165

160.8

7.8

200.0

66) 2450
118
470
4680

371
437
73

19

9.77

S 25

66) 462
18
475
4.75

2976
837

28929

596
3576
3376
371.36

N 20 00 E 625
N 14 00 503
N 5 40 E 477
N 30 00 W 477
N 8 15 W 25.50

58) 20000
19776
22402
3 15

595.5
786
58779
15300
10400
20553 W

168
6
10.068

4 2.3
5 3.1
6 3.9
7 4.7

647
8

37

200
185
150
54
66
4

5.7

32
3382