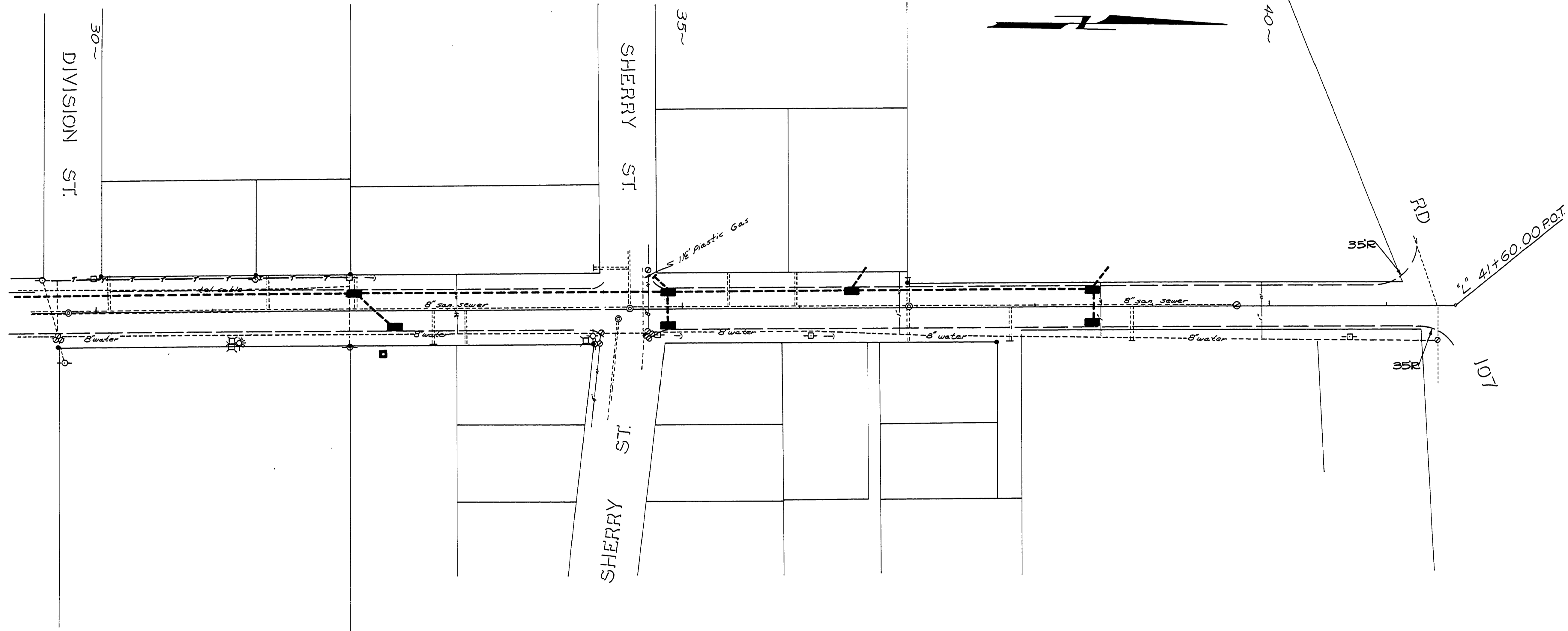
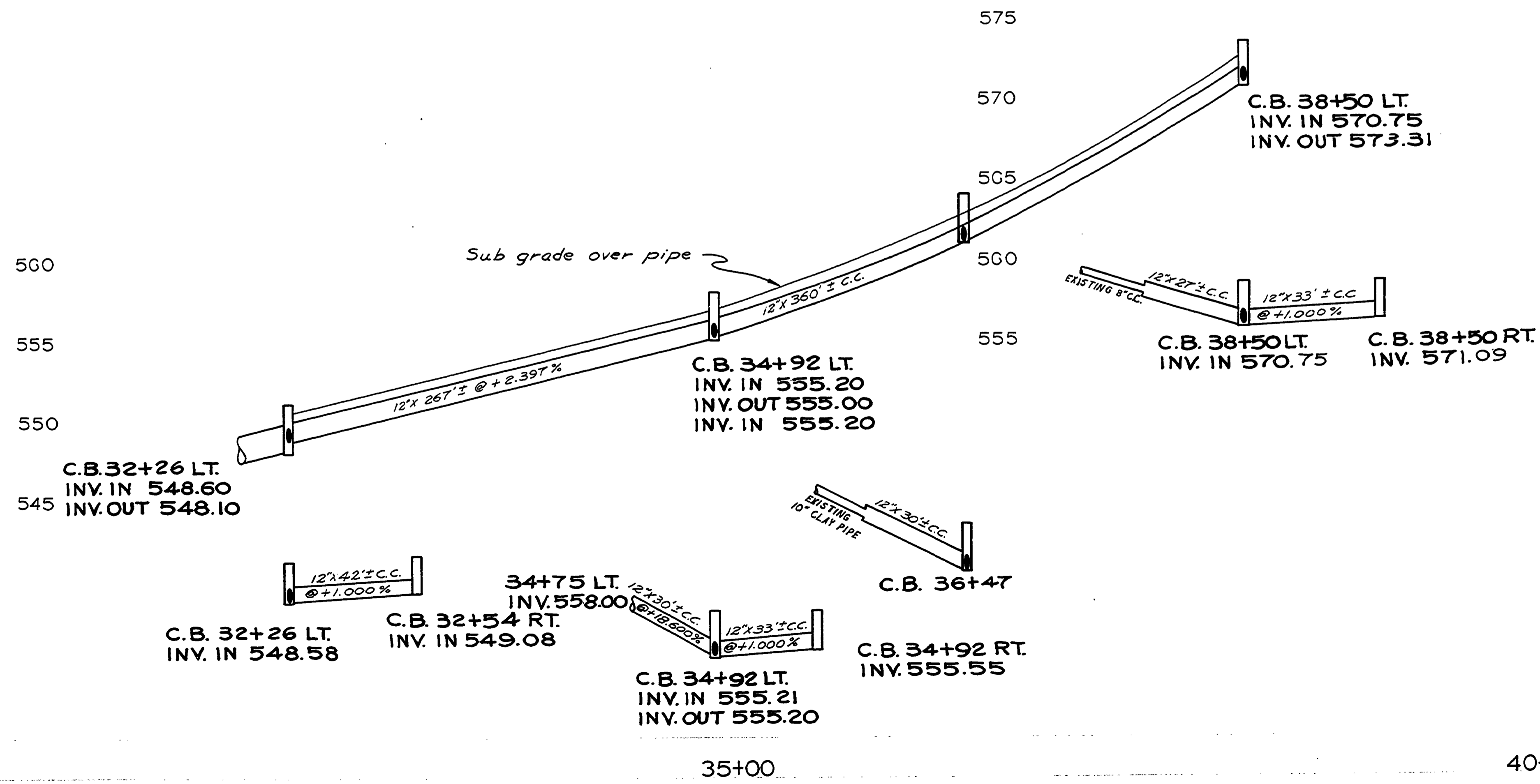


S 21 T 28 S R 6 W W.M.



FILED  
RECEIVED  
40-11-1978  
COUNTY SURVEYOR  
DOUGLAS COUNTY, ORE.

NOTE:  
ALL SANITARY SEWER  
LATERALS ARE 6"  
UNLESS OTHERWISE NOTED



AS BUILT 10-10-78 TV  
DOUGLAS COUNTY  
PUBLIC WORKS DEPARTMENT  
GLENHART AVE.  
1975 SHT. 6  
GEORGE E. GRUBB, DIRECTOR