

FILED
RECEIVED

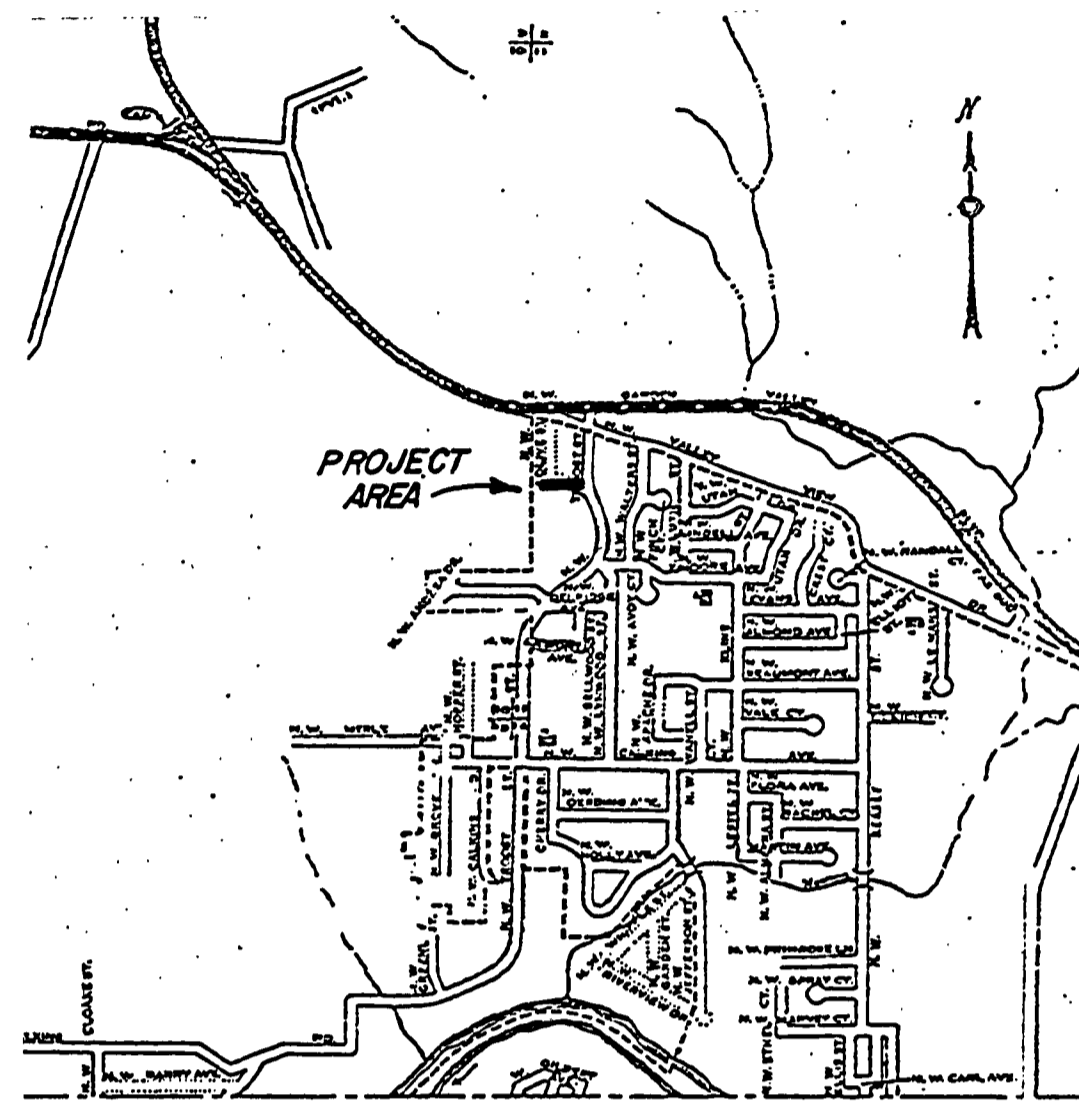
JUN 20 1976

COUNTY SURVEYOR
DOUGLAS COUNTY, ORE.

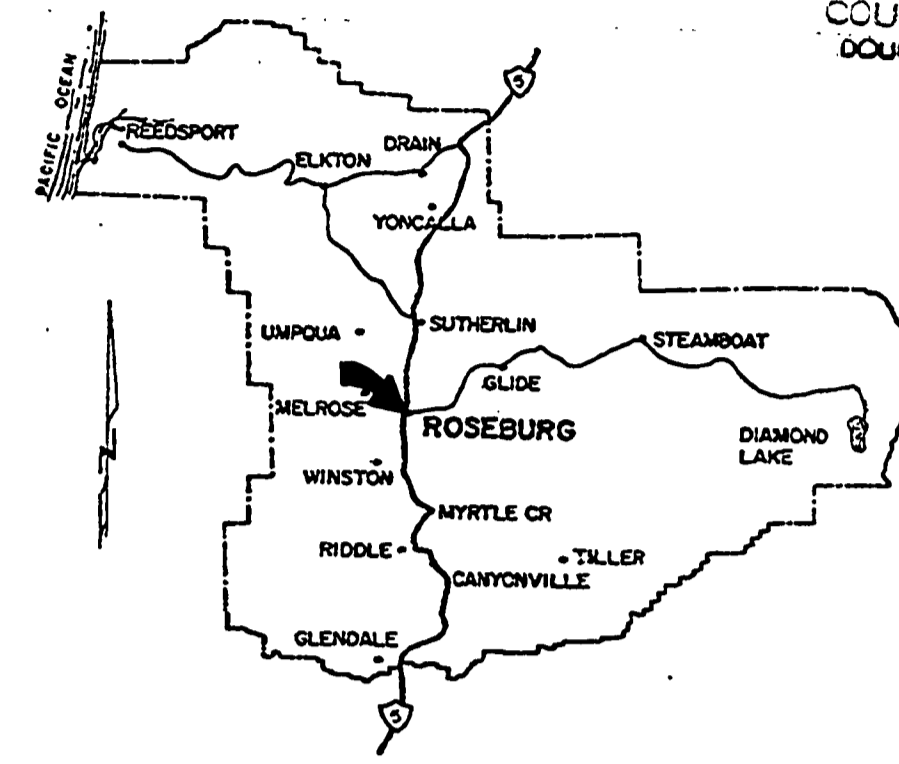
DOUGLAS COUNTY, OREGON

PLANS FOR PROPOSED STREET, SANITARY SEWER & STORM SEWER IMPROVEMENTS

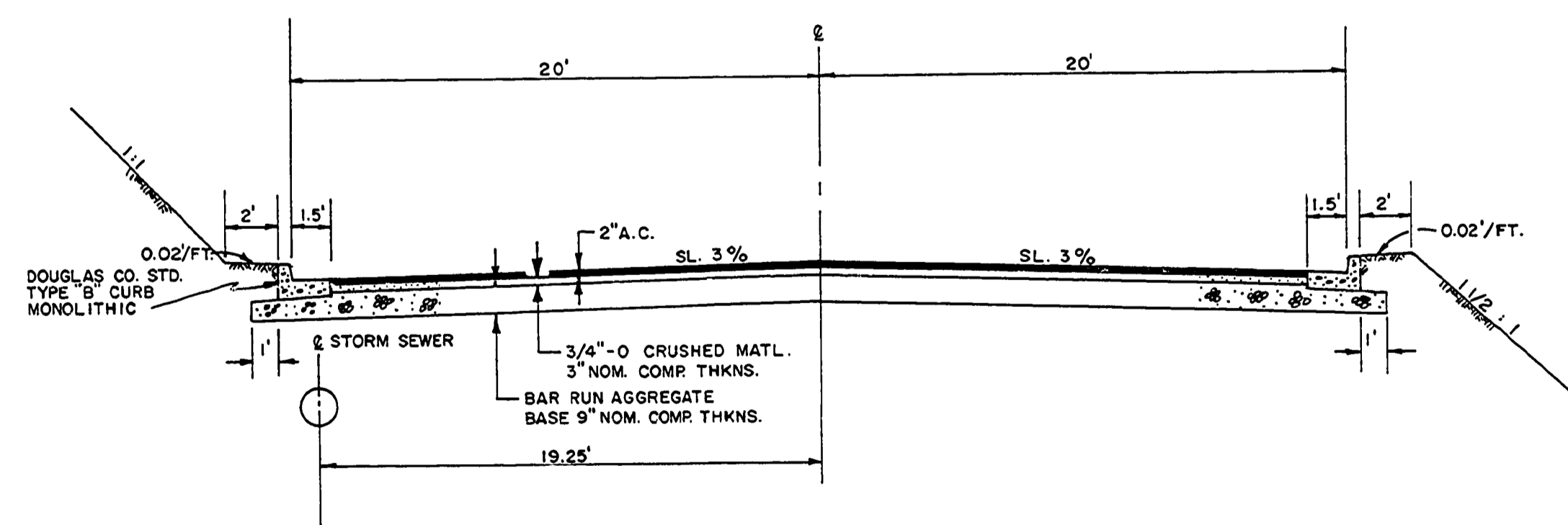
SUNBERRY DRIVE, ROSEBURG 1976



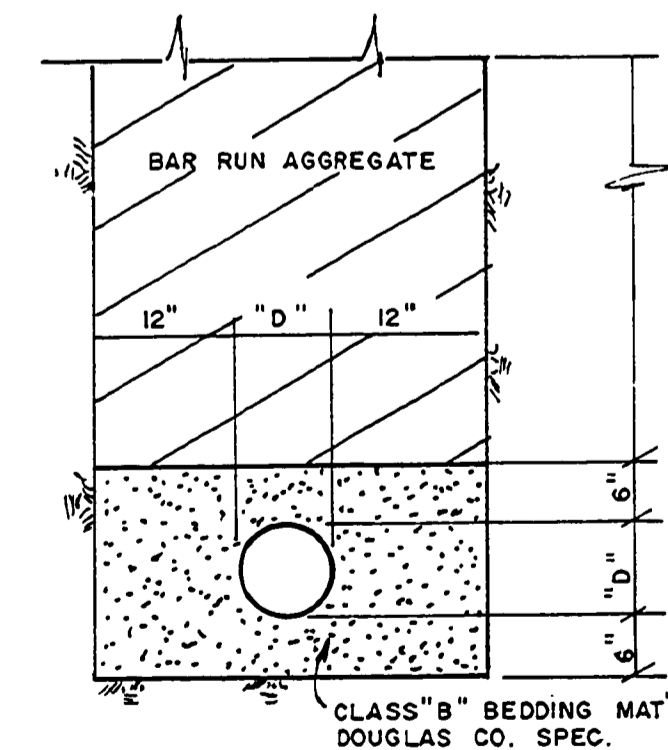
VICINITY MAP



DOUGLAS COUNTY
n.s.



TYPICAL SECTION
NOT TO SCALE



TYPICAL TRENCH SECTION

nts

INDEX of DRAWINGS

- SHEET NO.
- 1 TITLE SHEET and TYPICAL SECTIONS
 - 2 QUANTITY SUMMARY
 - 3 STREET PLANS
 - 4 STORM SEWER PLANS
 - 5 SANITARY SEWER PLANS
 - 6 SANITARY SEWER PLANS
 - 7 STANDARD DRAWING NO. 110
 - 8 STANDARD DRAWING NO. 310
 - 9 STANDARD DRAWING NO. 3
 - 10 STANDARD DRAWING NO. 9

AS BUILT 6-29-78 RUF.

REVISED 6-7-76 PER DOUGLAS CO. PLAN CHECK OF 6-3-76 piw
REVISED 5-5-76 PER DOUGLAS CO. PLAN CHECK OF 4-27-76 piw

DOUGLAS COUNTY PUBLIC WORKS DEPARTMENT GEORGE E. GRUBB, DIRECTOR	
SUNBERRY DRIVE	
 C & G ENGINEERING P.O. BOX 222 ROSEBURG, OREGON	SHEET OF 10 1
	J.O. 36250
DSGN. G.D.	DRWG. R.E.
CHKD.	DATE 3/25/76

