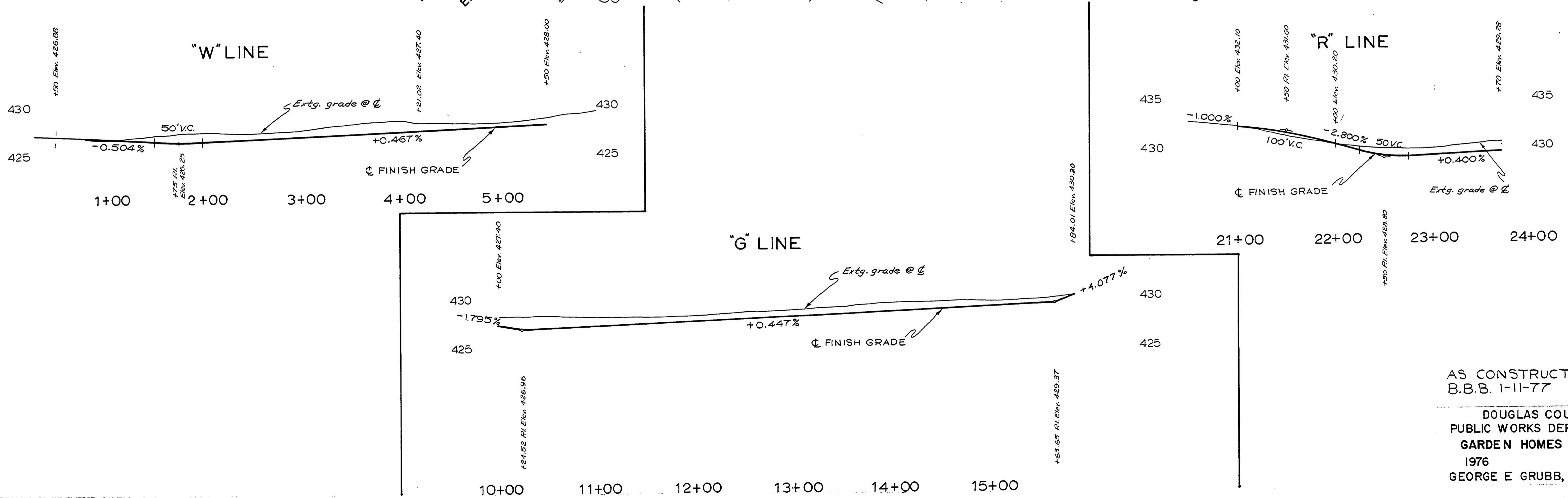
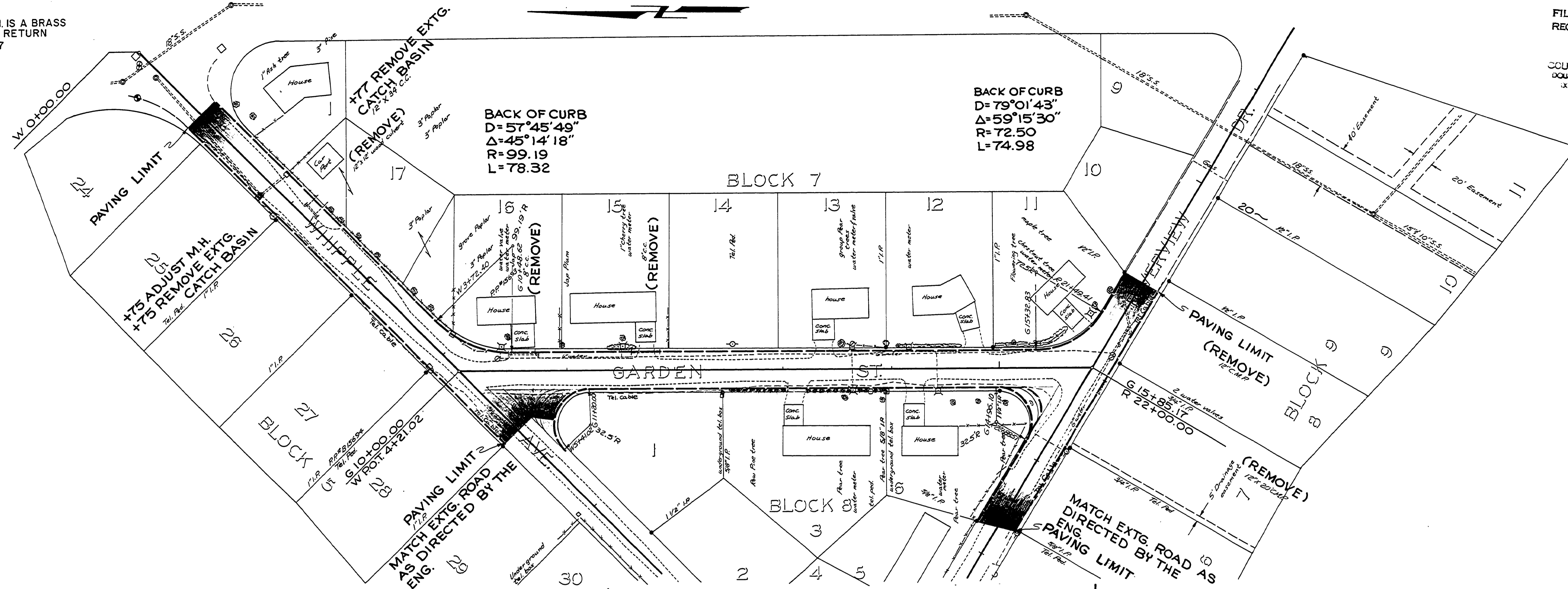


PROJECT B.M. IS A BRASS CAP IN CURB RETURN ELEV. 426.87

FILED RECEIVED JAN 11 1977 COUNTY SURVEYOR DOUGLAS COUNTY, ORE.



AS CONSTRUCTED
 B.B.B. 1-11-77
 DOUGLAS COUNTY
 PUBLIC WORKS DEPARTMENT
 GARDEN HOMES SUBDIV.
 1976 SHT. 3
 GEORGE E GRUBB, DIRECTOR