

OREGON CORNER RESTORATION FORM

SECTION 27

TOWNSHIP 25 S. RANGE 05 W

COUNTY DOUGLAS

DATE 2/10/2017

TRACT LRTI-1 WAHL

CORNER DESIGNATION:

T 25 S	R 05 W
S27	S26
S34	S35

POINT IDENTIFIER 500200

- CONDITION REPORT ONLY
- NOT FOUND
- RENEWED
- UNRECORDED
- SURVEYED IN
- REFERENCED OUT

PREVIOUS RENEWALS/SURVEYS, ETC:

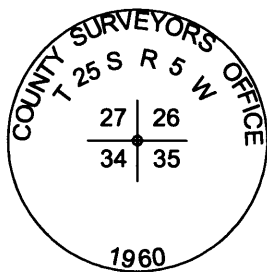
BAKER MAP 119-74, HOFFINE MAP 132-44, HOFFINE MAP 137-29

ACCESSORIES FOUND: (CONDITION AND SOURCE)

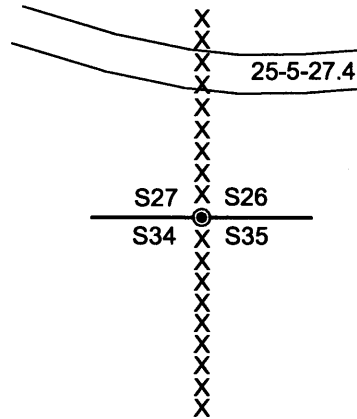
35" DOUGLAS FIR BEARS S65°W 73.0 FT HEALED FACE AND TAG (RECORD FROM BAKER MAP 119-74 S68°W 73.1 FT)

30" DOUGLAS FIR BEARS N24.5°W 75.7 FT HEALED FACE AND TAG (RECORD FROM BAKER MAP 119-74 N21°W 75.6 FT)

MONUMENT DETAIL:



SKETCH:
(NOT TO SCALE)



LEGEND:

- X X X X NORTH SOUTH FENCE LINE
- ⊙ FND 1960 COUNTY BRASS CAP
- APPROXIMATE LOCATION OF THE 25-5-27.4 ROCK ROAD

MONUMENT:

FOUND 1960 COUNTY BRASS CAP

FILED

Date: 3/30/2017 By: JC

This survey consists of:

Map: _____

Narrative: _____

Corner Rpt: CS65/95-29

NEW ACCESSORIES:

19" DOUGLAS FIR BEARS S17 1/4°E 13.8 FT. WE SCRIBE T25S R5W S35 BT AND TAG TREE

10" DOUGLAS FIR BEARS N72 1/2°E 18.1 FT. WE SCRIBE T25S R5W S26 BT AND TAG TREE

DOUGLAS COUNTY SURVEYOR

LOCATION & COMMENTS:

FOUND 1960 COUNTY BRASS CAP 1.5 FEET ABOVE GROUND LEVEL. CORNER WAS LOOSE, WE TAMPED THE DIRT AROUND THE CORNER TO FIRM IT UP. CORNER LIES ON SOUTH FACING SLOPE UNDER MATURE DOUGLAS FIR, APPROXIMATELY 1.0 FOOT EAST OF NORTH SOUTH FENCE LINE, APPROXIMATELY 125.0 FEET SOUTH OF THE 25-5-27.4 ROCK ROAD.

BEARING BASIS: ASSUMED FROM HOFFINE MAP M132-44

CORNERS 36 TO 37

FIRM/AGENCY: LONE ROCK TIMBER MANAGEMENT CO.

ADDRESS: P.O. BOX 1127

ROSEBURG, OR 97470

PARTY CHIEF: KEN W. HOFFINE

NOTES: JOSHUA W. FOWLER

WITNESS: GARY ANGIOLET

REGISTERED
PROFESSIONAL
LAND SURVEYOR

Ken W Hoffine

OREGON
JULY 16, 1987
KEN W. HOFFINE
PLS 2291

C.S. File No 6595-29

EXPIRES 6-30-17