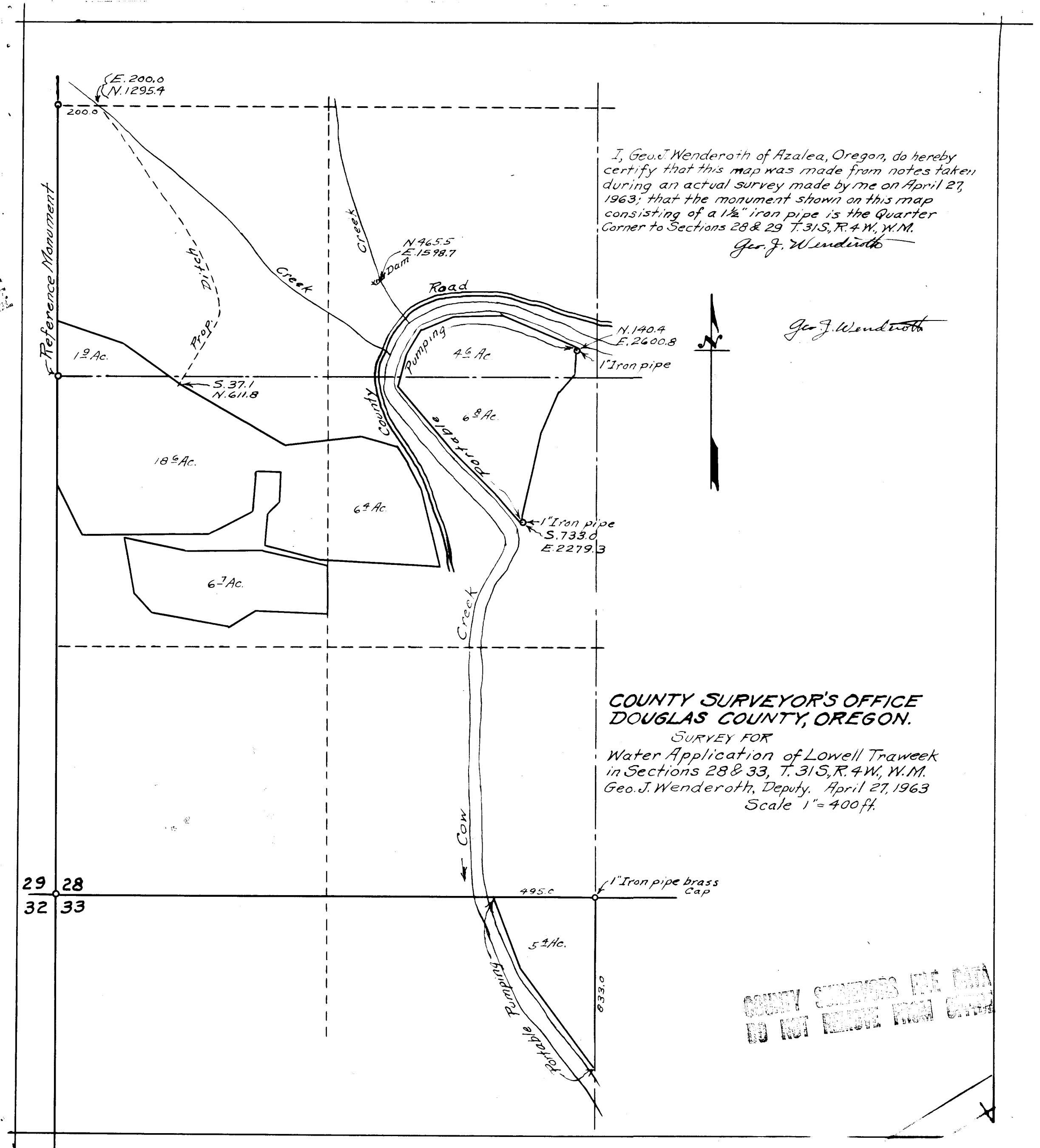


COUNTY SURVEYOR'S OFFICE
DO NOT REMOVE FROM OFFICE



I, Geo. J. Wenderoth of Azalea, Oregon, do hereby certify that this map was made from notes taken during an actual survey made by me on April 27, 1963; that the monument shown on this map consisting of a 1 1/2" iron pipe is the Quarter Corner to Sections 28 & 29 T. 31 S., R. 4 W., W. M.
Geo. J. Wenderoth

Geo. J. Wenderoth

**COUNTY SURVEYOR'S OFFICE
DOUGLAS COUNTY, OREGON.**

SURVEY FOR
Water Application of Lowell Traweek
in Sections 28 & 33, T. 31 S., R. 4 W., W. M.
Geo. J. Wenderoth, Deputy, April 27, 1963
Scale 1" = 400 ft.

COUNTY SURVEYOR'S OFFICE
DO NOT REMOVE FROM OFFICE