

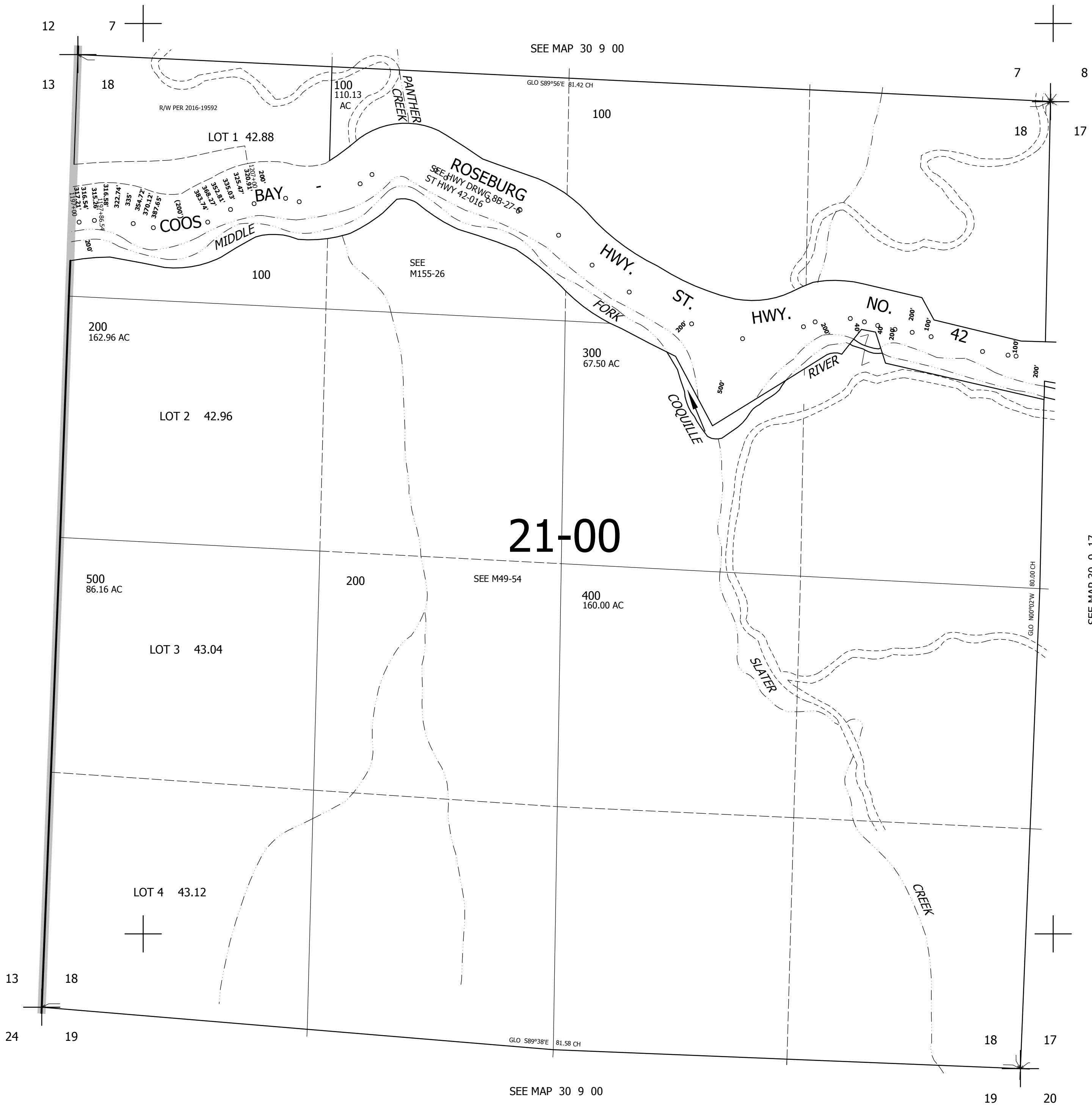
THIS MAP WAS PREPARED FOR ASSESSMENT PURPOSE ONLY.

SEC.18 T30S. R.9W. W.M.
DOUGLAS COUNTY

REVISED ON
6-19-17

30 9 18

1" = 400'



CANCELLED
100M1 300M1 400M1
101

SEE MAP 30 9 17

487,000

4,038,000

30 9 18

COOS COUNTY