

THIS MAP WAS PREPARED FOR ASSESSMENT PURPOSE ONLY.

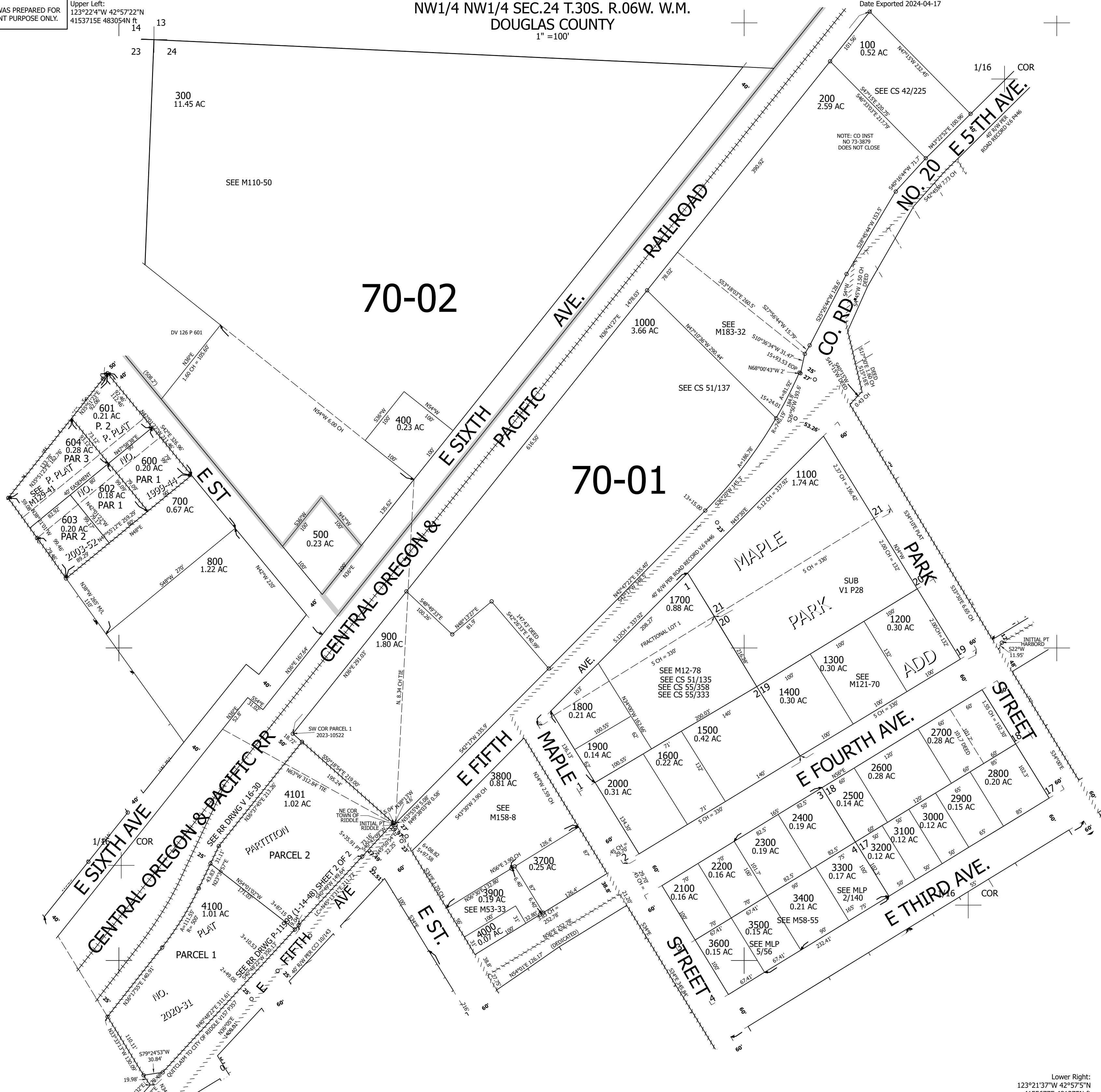
Upper Left:
123°22'4"W 42°57'22"N
4153715E 483054N ft

NW1/4 NW1/4 SEC.24 T.30S. R.06W. W.M.
DOUGLAS COUNTY
1" = 100'

300624BB
Riddle

CANCELLED NOS:
3400M1.1001

Date Exported 2024-04-17



70-02

70-01

300624BB
Riddle

Lower Right:
123°21'37"W 42°57'5"N
4155677E 481275N ft