

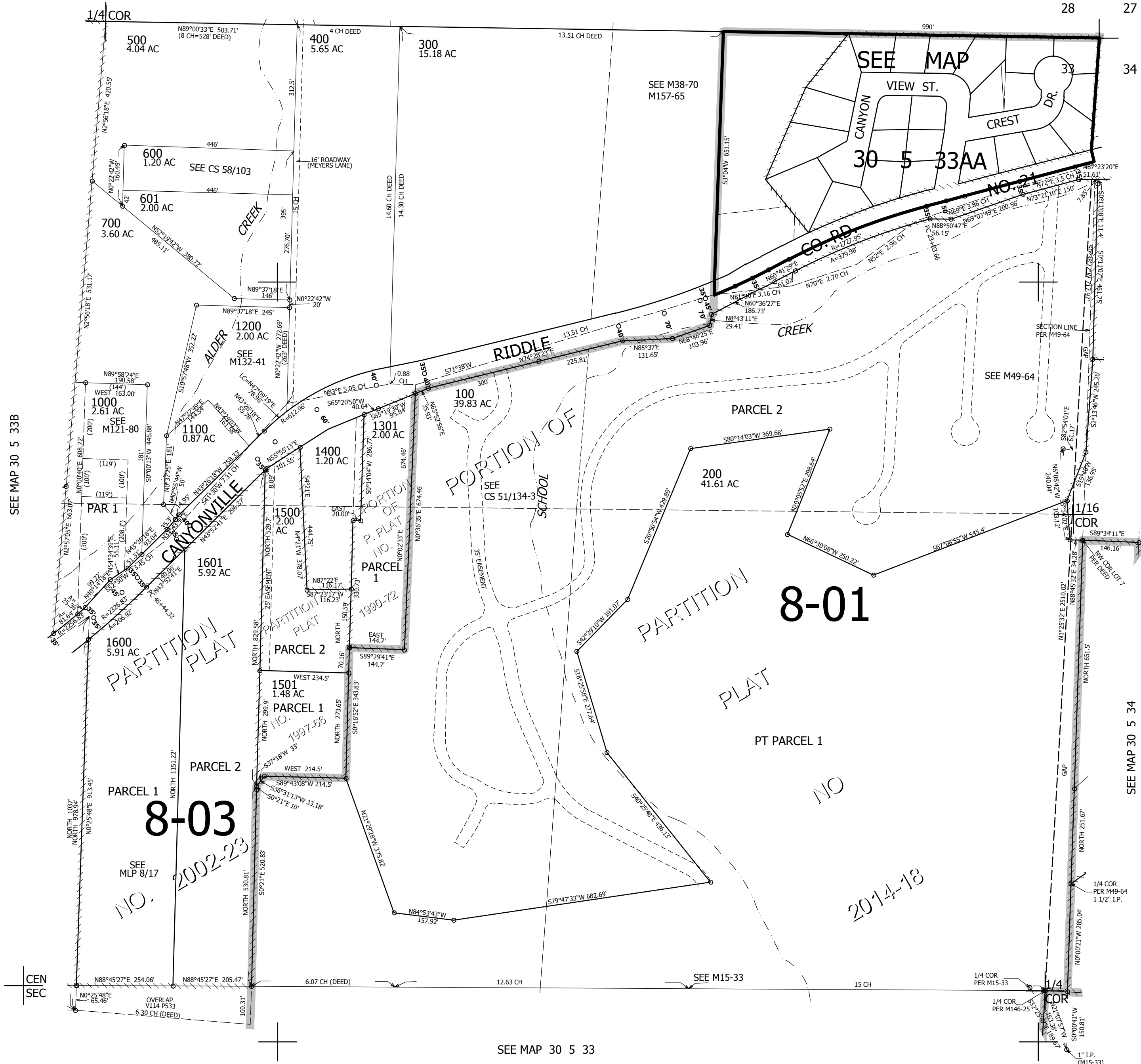
THIS MAP WAS PREPARED FOR ASSESSMENT PURPOSE ONLY.

NE1/4 SEC.33 T30S. R.5W. W.M. DOUGLAS COUNTY 1" = 200'

REVISED ON 11-10-14

30 5 33A & INDEX CANYONVILLE

SEE MAP 30 5 28



SEE MAP 30 5 33B

CANCELLED NO'S 800 900 200M1 1300M1 101 201 1302 1300

SEE MAP 30 5 34BB

SEE MAP 30 5 34

SEE MAP 30 5 33

4,175,000

469,000

30 5 33A & INDEX CANYONVILLE