

THIS MAP WAS PREPARED FOR ASSESSMENT PURPOSE ONLY.

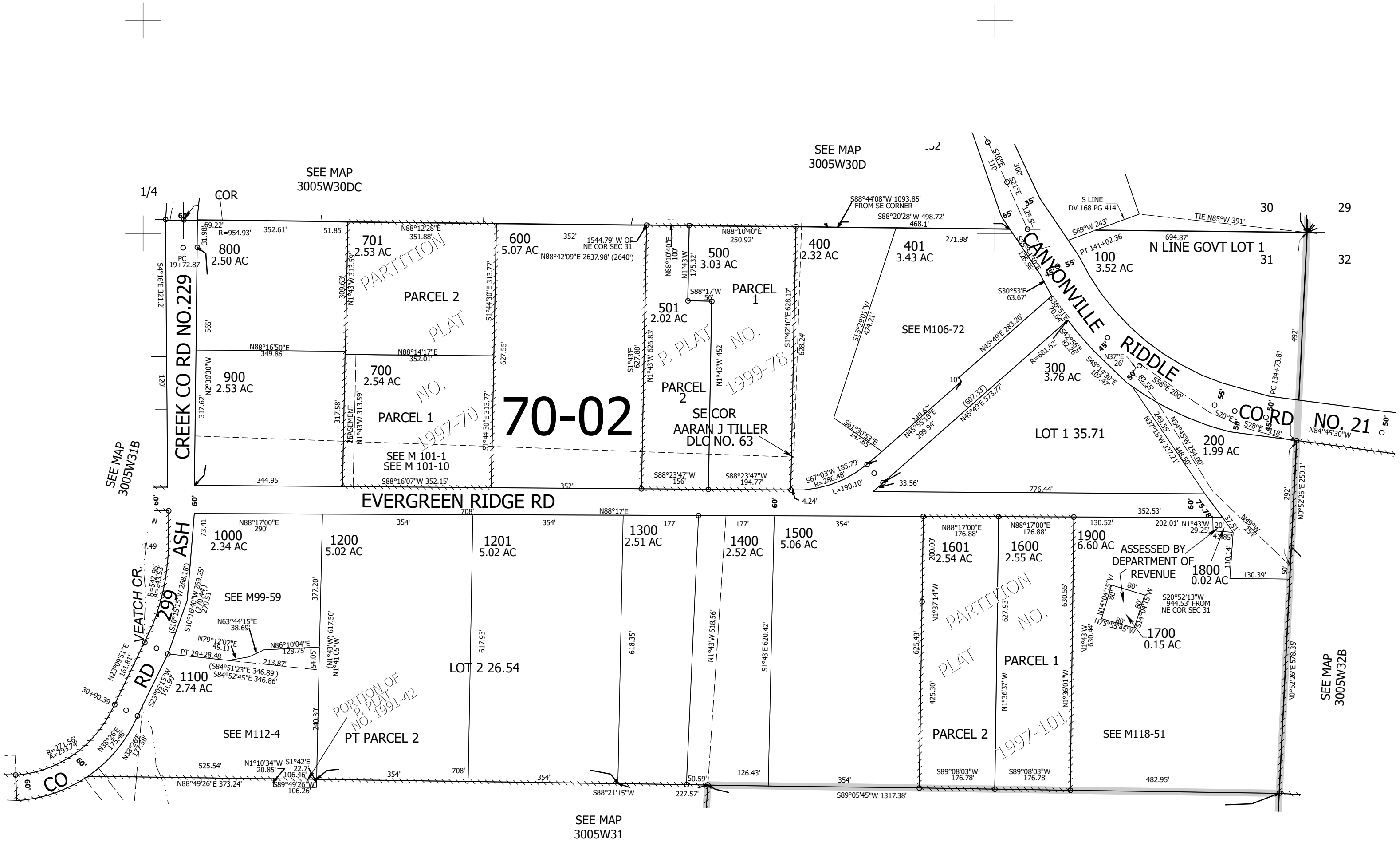
Upper Left:
123°20'17"W 42°55'47"N
4161345E 473181N ft

NE1/4 SEC.31 T.30S. R.05W. W.M.
DOUGLAS COUNTY
1" = 200'

Date Exported 2023-09-12

300531A
& INDEX

CANCELLED NOS:
1001 1000M1



300531A
& INDEX

Lower Right:
123°19'23"W 42°55'14"N
4165269E 469703N ft