

THIS MAP WAS PREPARED FOR ASSESSMENT PURPOSE ONLY.

Upper Left:  
123°19'49"W 42°59'4"N  
4164145E 493084N ft

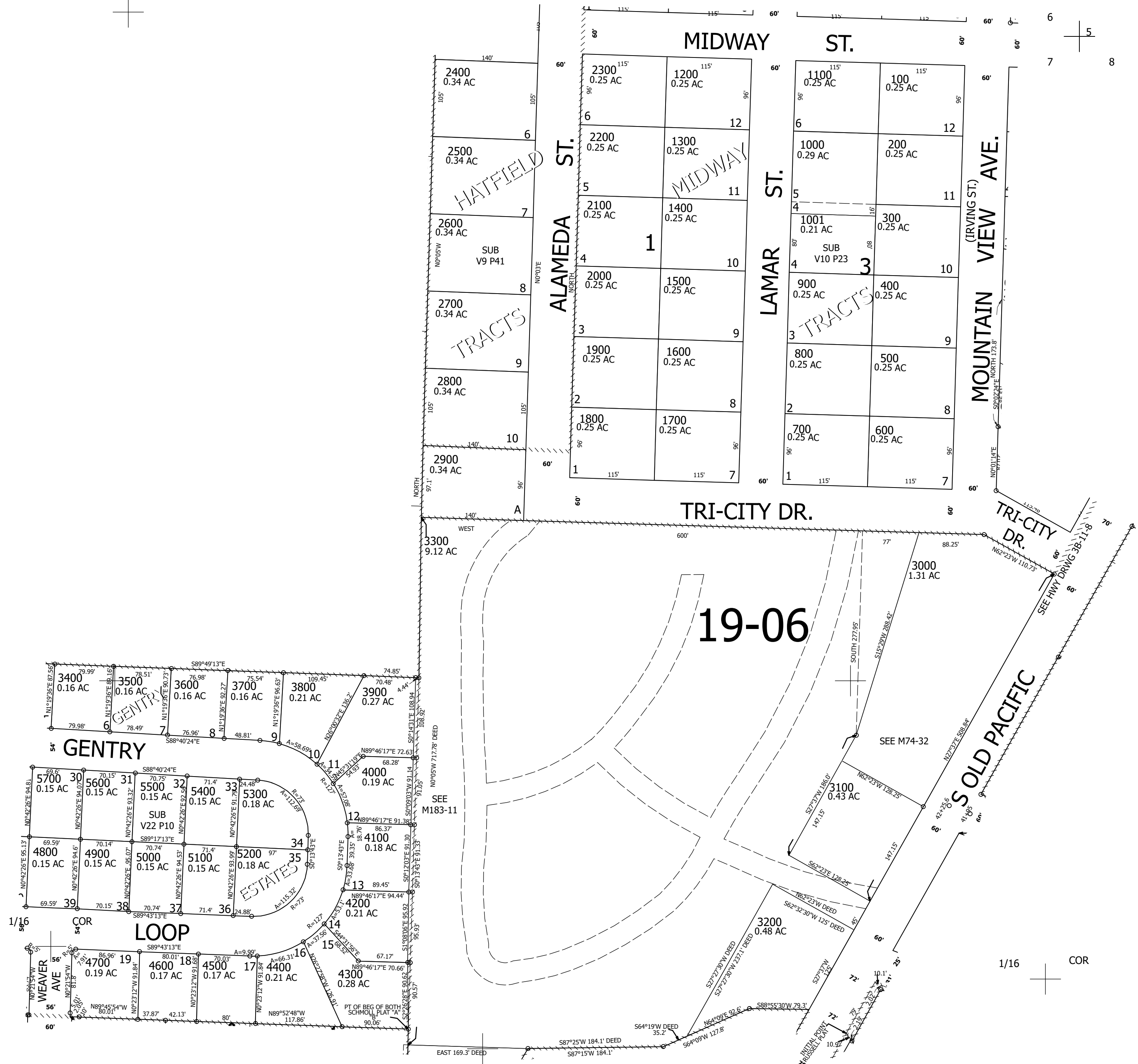
NE1/4 NE1/4 SEC.07 T.30S. R.05W. W.M.  
DOUGLAS COUNTY  
1" = 100'

Date Exported 2023-12-11

300507AA  
Myrtle Creek

CANCELLED NOS:  
3901 4001 4101  
4201 4301

1/16 COR



1/16 COR

300507AA  
Myrtle Creek

Lower Right:  
123°19'22"W 42°58'47"N  
4166108E 491304N ft