

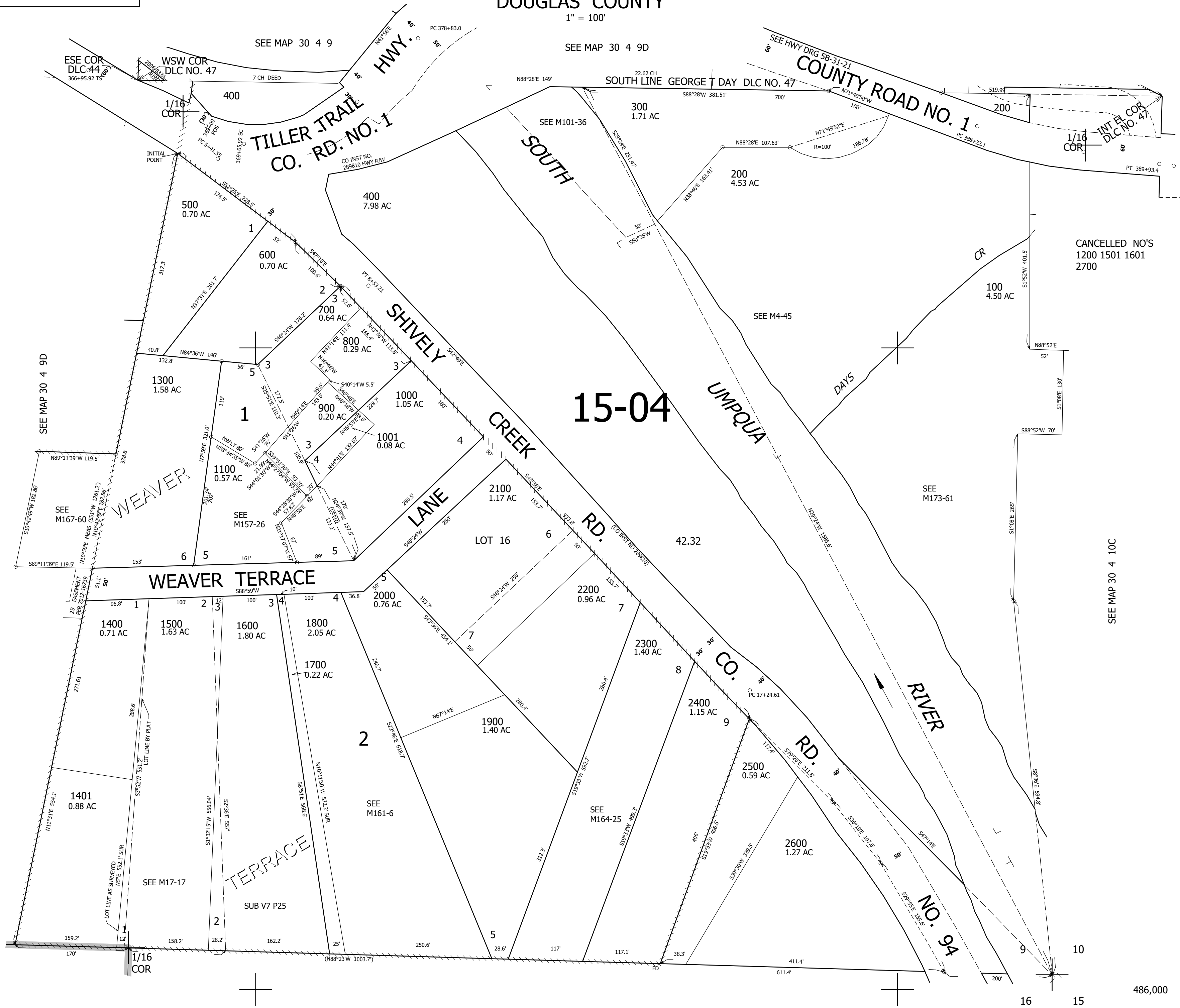
THIS MAP WAS PREPARED FOR ASSESSMENT PURPOSE ONLY.

SE1/4 SE1/4 SEC.9 T30S. R.4W. W.M.
DOUGLAS COUNTY

REVISED ON
6-28-21

30 4 9DD

1" = 100'



CANCELLED NO'S
1200 1501 1601
2700

SEE MAP 30 4 10C

SEE MAP 30 4 16

4,207,000

30 4 9DD

486,000