

THIS MAP WAS PREPARED FOR ASSESSMENT PURPOSE ONLY.

Upper Left:
123°13'55"W 43°3'28"N
4191313E 518876N ft

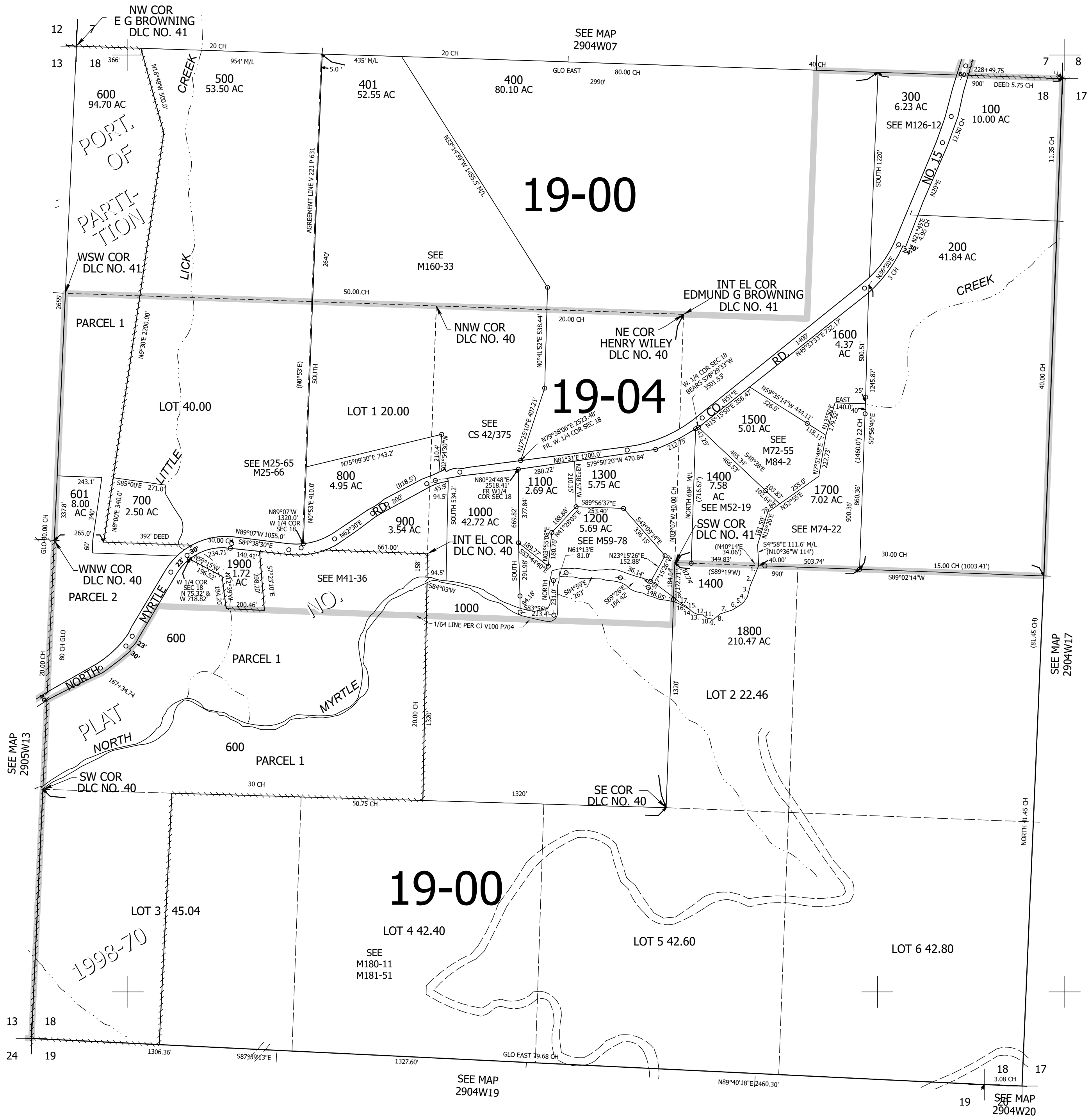
SEC.18 T.29S. R.04W. W.M.
DOUGLAS COUNTY
1" = 400'

Date Exported 2026-06-11

290418

CANCELLED NOS:
2000 1801

- PARCEL 1400
C/L OF CREEK
1. S21°00'03"W 35.9'
 2. S20°59'58"W 80'
 3. S13°00'00"W 62'
 4. S31°59'59"W 31'
 5. S45°00'00"W 21'
 6. S56°00'02"W 55'
 7. S69°59'59"W 69'
 8. S48°00'01"W 44'
 9. N85°00'01"W 27'
 10. N73°59'54"W 12'
 11. N51°40'09"W 25.4'
 12. N88°46'05"W 26.1'
 13. N69°19'43"W 27.5'
 14. N50°54'04"W 30.2'
 15. N50°54'05"W 25'
 16. N65°00'03"W 20'
 17. N54°00'01"W 50'
 18. N52°59'58"W 9.5' M/L



290418

Lower Right:
123°12'6"W 43°2'22"N
4199162E 511920N ft