

THIS MAP WAS PREPARED FOR ASSESSMENT PURPOSE ONLY.

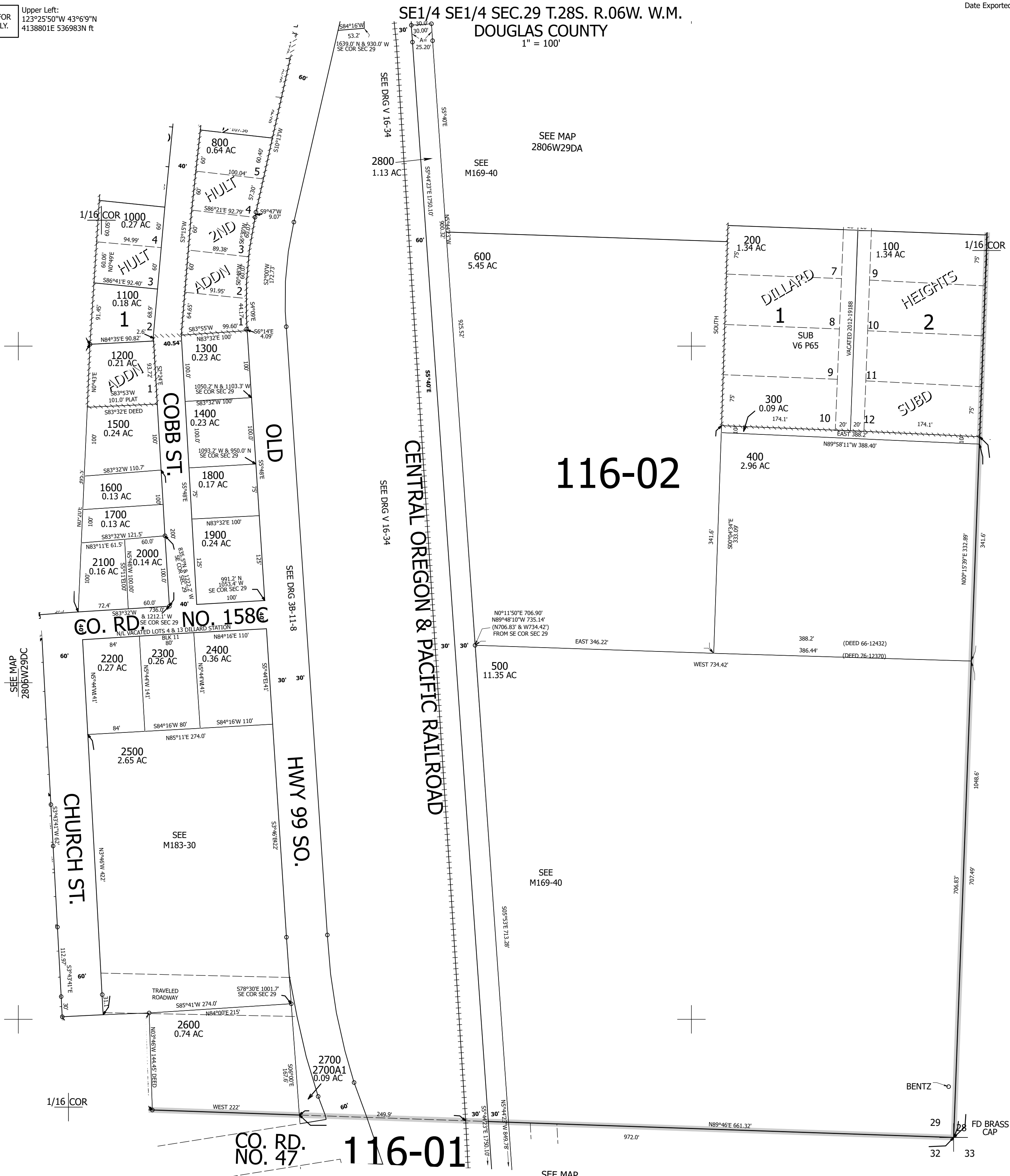
Upper Left:
123°25'50"W 43°6'9"N
4138801E 536983N ft

Date Exported 2026-06-10

280629DD

CANCELLED NOS:
900 2700M1 700

SE1/4 SE1/4 SEC.29 T.28S. R.06W. W.M.
DOUGLAS COUNTY
1" = 100'



SEE MAP
2806W29DC

SEE MAP
2806W28

SEE MAP
2806W29DA

SEE
M169-40

600
5.45 AC

200
1.34 AC

100
1.34 AC

1/16 COR 1000
0.27 AC

1100
0.18 AC

1200
0.21 AC

1500
0.24 AC

1600
0.13 AC

1700
0.13 AC

2100
0.16 AC

2000
0.14 AC

2200
0.27 AC

2300
0.26 AC

2400
0.36 AC

2500
2.65 AC

2600
0.74 AC

2700
2700A1
0.09 AC

500
11.35 AC

300
0.09 AC

400
2.96 AC

SEE
M169-40

CO. RD.
NO. 47

116-01

116-02

280629DD

Lower Right:
123°25'23"W 43°5'53"N
4140773E 535244N ft