

THIS MAP WAS PREPARED FOR ASSESSMENT PURPOSE ONLY.

Upper Left:
123°26'10"W 43°6'9"N
4137347E 537067N ft

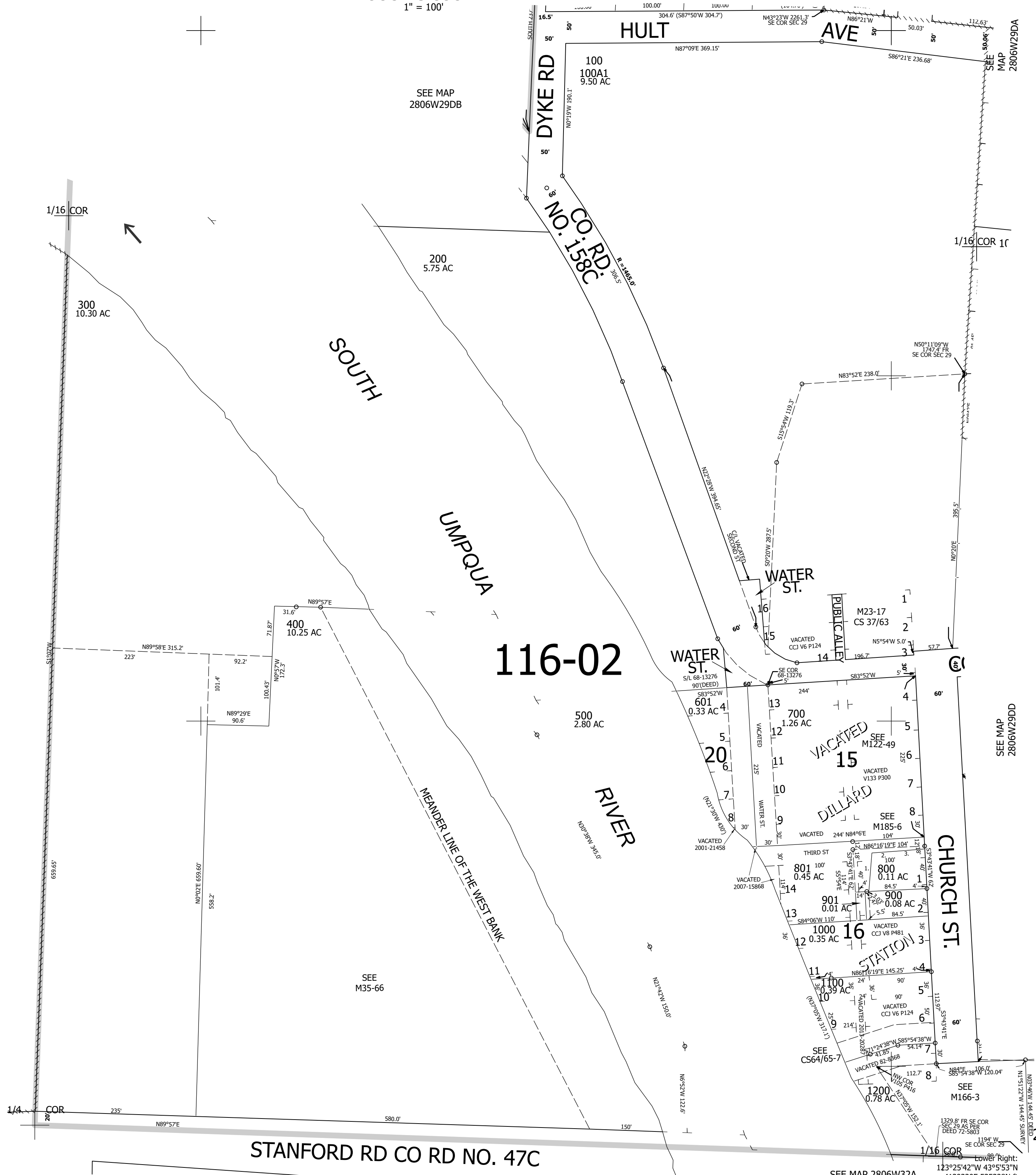
SW1/4 SE1/4 SEC.29 T.28S. R.06W. W.M.
DOUGLAS COUNTY

Date Exported 2026-06-11

280629DC

Parcel 801
POB - S67°51'31"W 1227.66'
TO SOUTH 1/4 COR SEC 29
1. N1°26'25"W 55.9'
2. N82°53'24"E 42.64'
3. N82°27'02"E 37.09'

CANCELLED NOS:
602 603 604
600 802



SEE MAP 2806W29

SEE MAP 2806W29DD

SEE M35-66

SEE MAP 2806W32A

280629DC