

THIS MAP WAS PREPARED FOR ASSESSMENT PURPOSE ONLY.

Upper Left:
123°25'15"W 43°7'14"N
4141651E 543494N ft

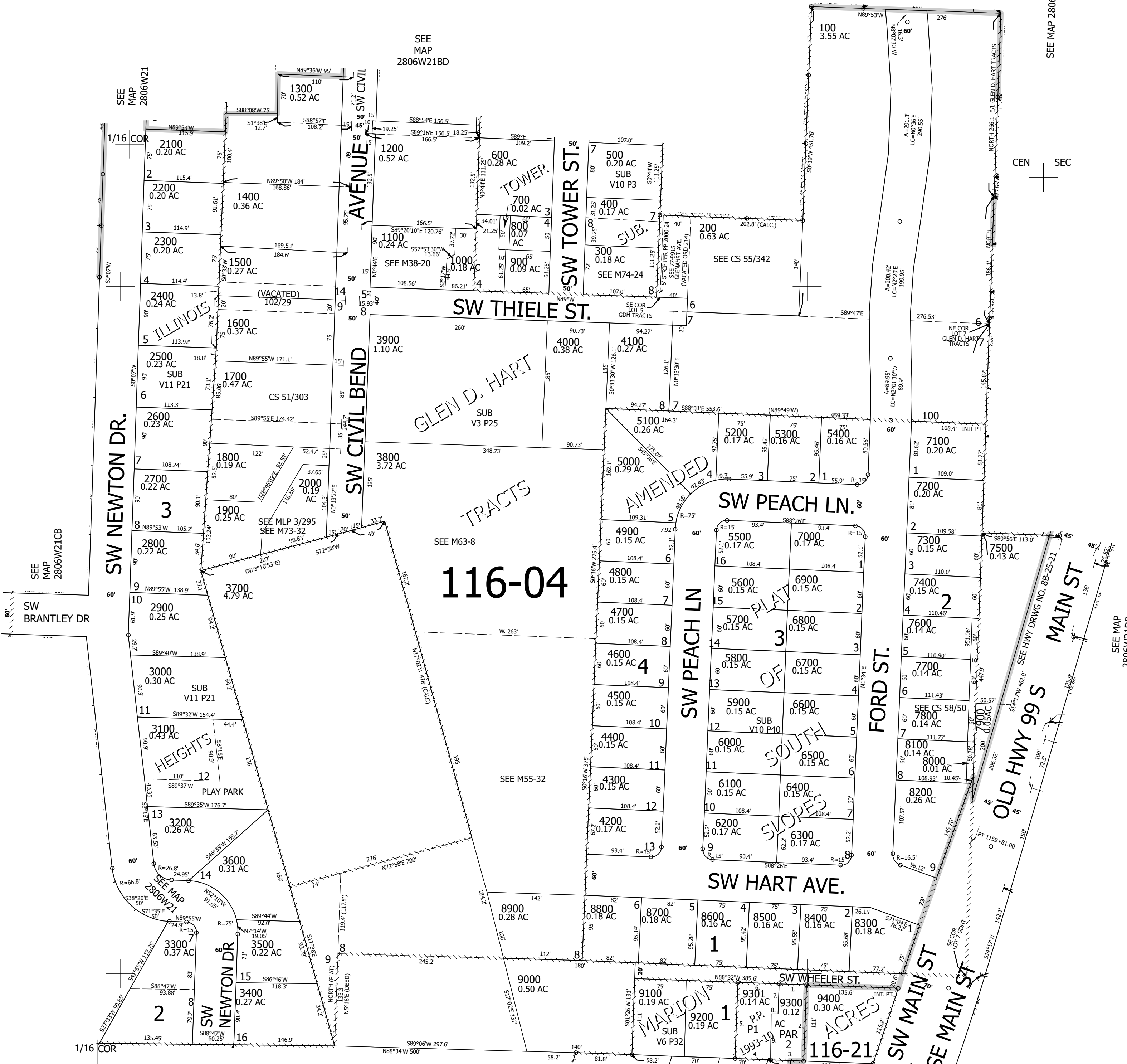
NE1/4 SW1/4 SEC.21 T.28S. R.06W. W.M.
DOUGLAS COUNTY
1" = 100'

Date Exported 2025-02-24

280621CA
Winston

CANCELLED NOS:
110001

- PP 1993-10
- 1. S88°34'00"E 40'
- 2. S1°26'00"W 111'
- 3. S88°34'00"E 48.25'
- 4. S88°34'00"E 51.75'
- 5. S1°26'00"E 111'
- 6. S88°34'00"E 60'
- 7. N1°10'45"E 43.79'
- 8. N89°52'33"W 10.03'
- 9. N0°04'42"E 67'



SEE MAP 2806W21

SEE MAP 2806W21CB

SEE MAP 2806W21

SEE MAP 2806W21CD

SEE MAP 2806W21AC

SEE MAP 2806W21DB

CEN SEC

1/16 COR

280621CA
Winston

Lower Right:
123°24'47"W 43°6'58"N
4143626E 541755N ft