

THIS MAP WAS PREPARED FOR ASSESSMENT PURPOSE ONLY.

Upper Left:  
123°22'5"W 43°12'N  
4156709E 571950N ft

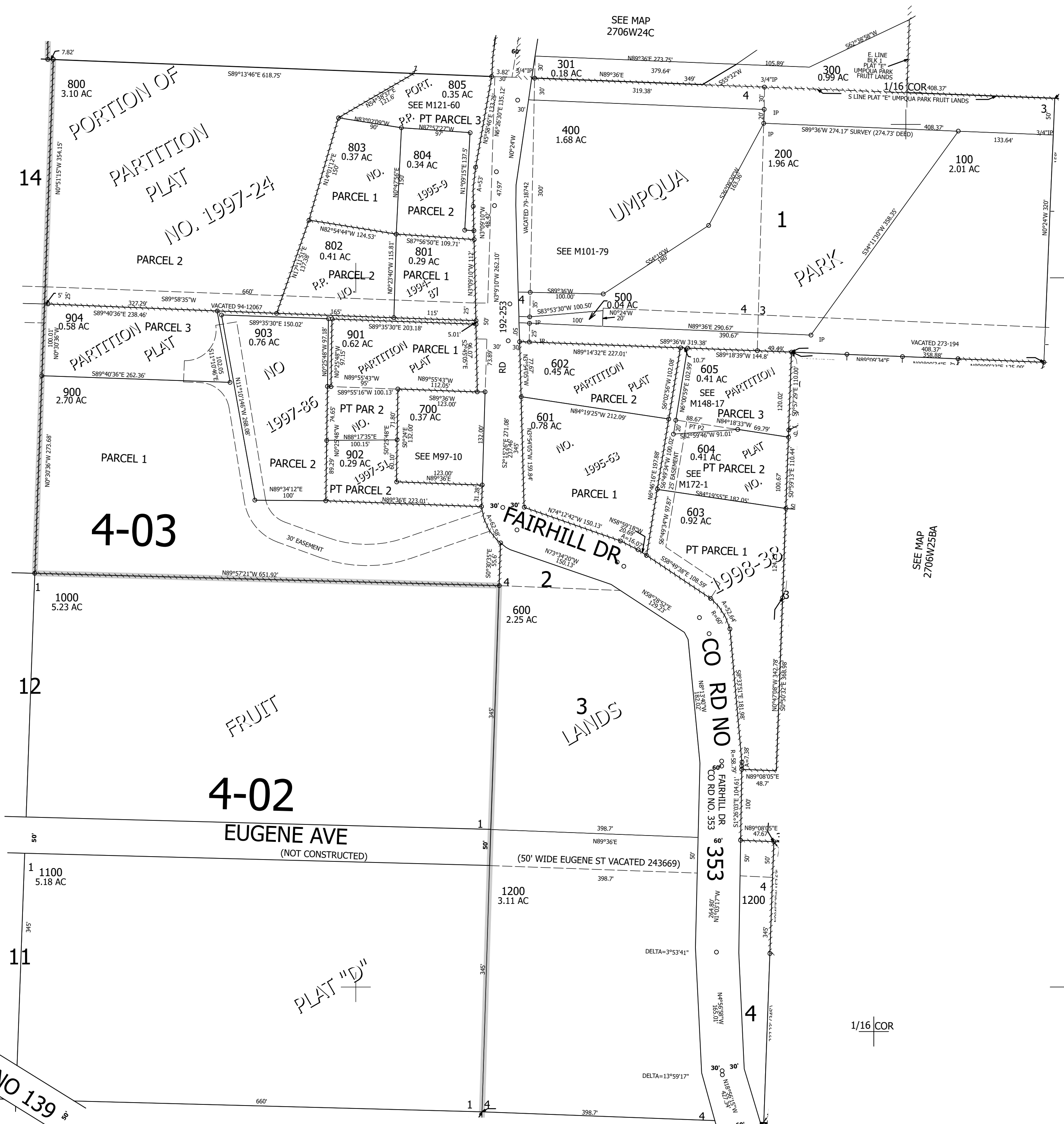
NW1/4 NW1/4 SEC.25 T.27S. R.06W. W.M.  
DOUGLAS COUNTY  
1" = 100'

Date Exported 2025-04-07

270625BB  
Roseburg

CANCELLED NOS:  
606 607 905

23 | 24  
26 | 25



SEE MAP 2706W26

SEE MAP 2706W24C

SEE MAP 2706W25BA

SEE MAP 2706W25BC

1/16 COR  
CO RD NO 139

1/16 COR

270625BB  
Roseburg

Lower Right:  
123°21'38"W 43°11'44"N  
4158686E 570230N ft