

SE1/4 SE1/4 SEC.15 T.27S. R.6W. W.M.
DOUGLAS COUNTY

REVISED ON
10-4-16

27 6 15DD
ROSEBURG

1" = 100'

SEE MAP 27 6 15DA

1/16
COR

CANCELLED NO'S
8000 8100 10601
10701 9301 10001

THIS MAP WAS PREPARED FOR
ASSESSMENT PURPOSE ONLY.

SEE MAP 27 6 15DC

SEE MAP 27 6 14CC

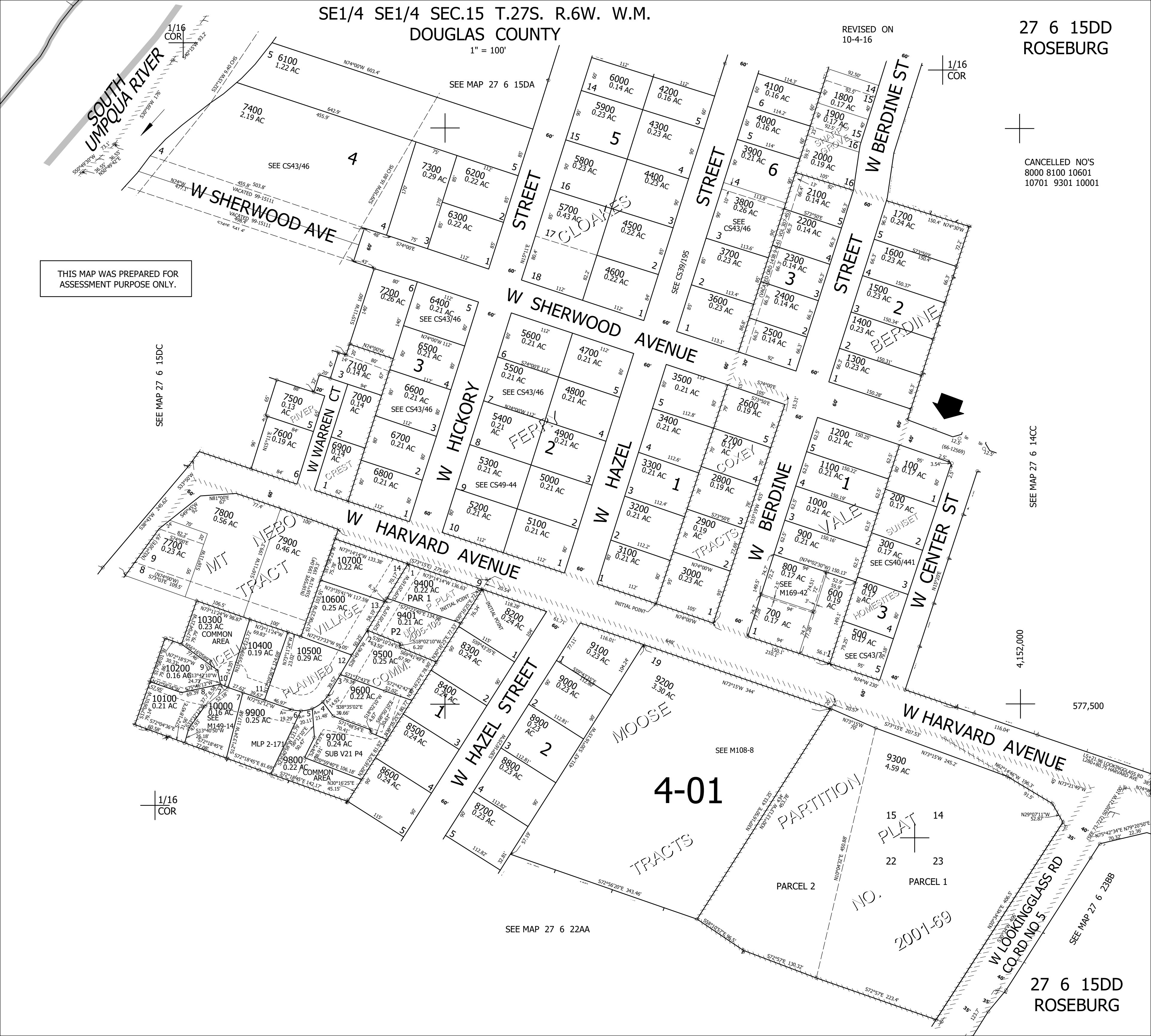
4,152,000

577,500

SEE MAP 27 6 22AA

SEE MAP 27 6 23BB

27 6 15DD
ROSEBURG



4-01

PARTITION

PLAT

NO. 2001-69

PARCEL 2

PARCEL 1

SEE M108-8

2001-69

W LOOKINGGLASS RD
CO. RD. NO. 5

