

THIS MAP WAS PREPARED FOR ASSESSMENT PURPOSE ONLY.

Upper Left:
123°24'12"W 43°13'19"N
4147618E 580247N ft

NE1/4 SW1/4 SEC.15 T.27S. R.06W. W.M.
DOUGLAS COUNTY
1" = 100'

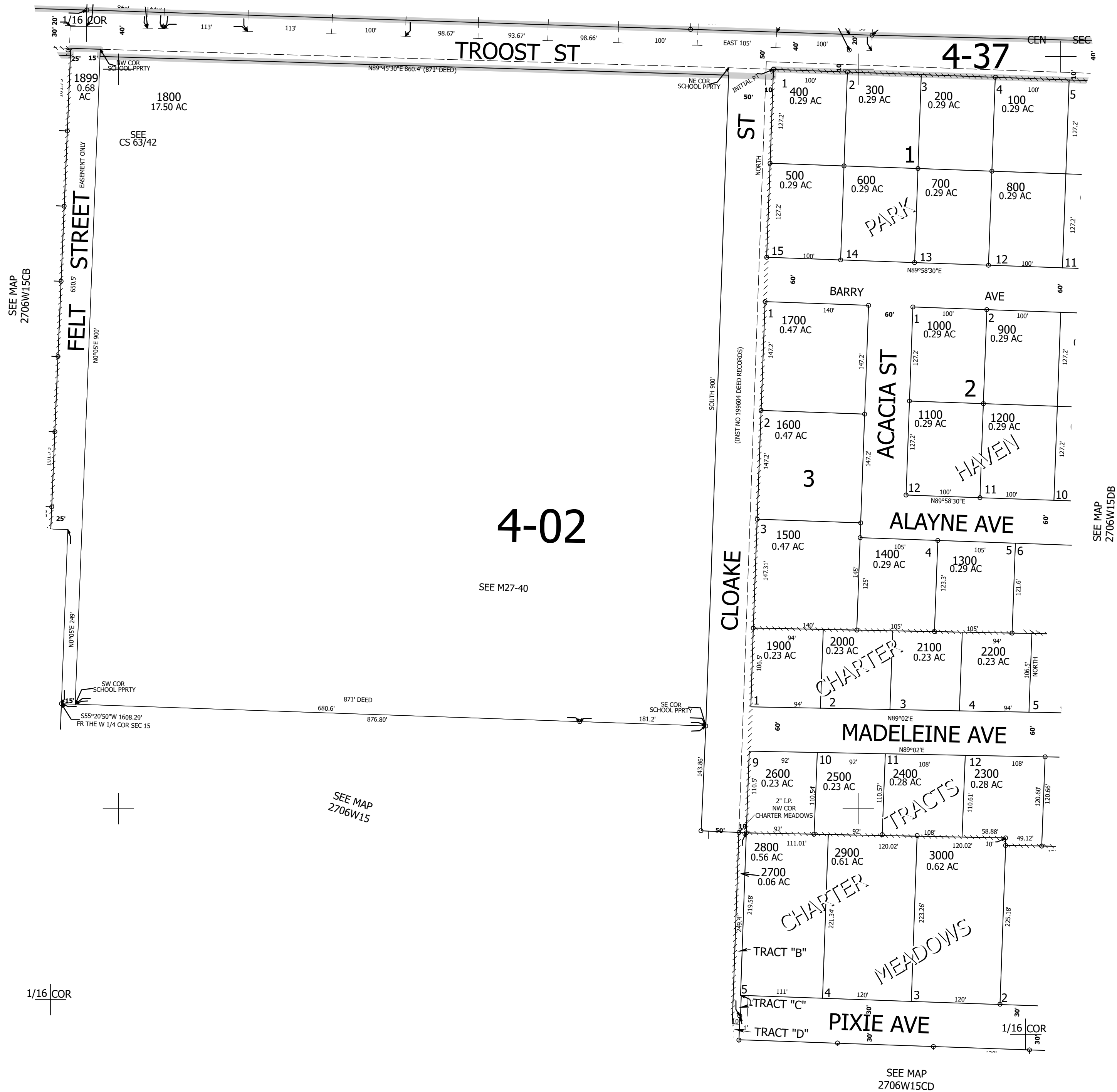
Date Exported 2026-02-11

270615CA
ROSEBURG

CANCELLED NOS:

SEE MAP
2706W15BD

SEE MAP
2706W15AC



SEE MAP
2706W15CB

SEE MAP
2706W15DB

4-02
SEE M27-40

SEE MAP
2706W15

SEE MAP
2706W15CD

270615CA
ROSEBURG

Lower Right:
123°23'44"W 43°13'3"N
4149590E 578509N ft