

THIS MAP WAS PREPARED FOR ASSESSMENT PURPOSE ONLY.

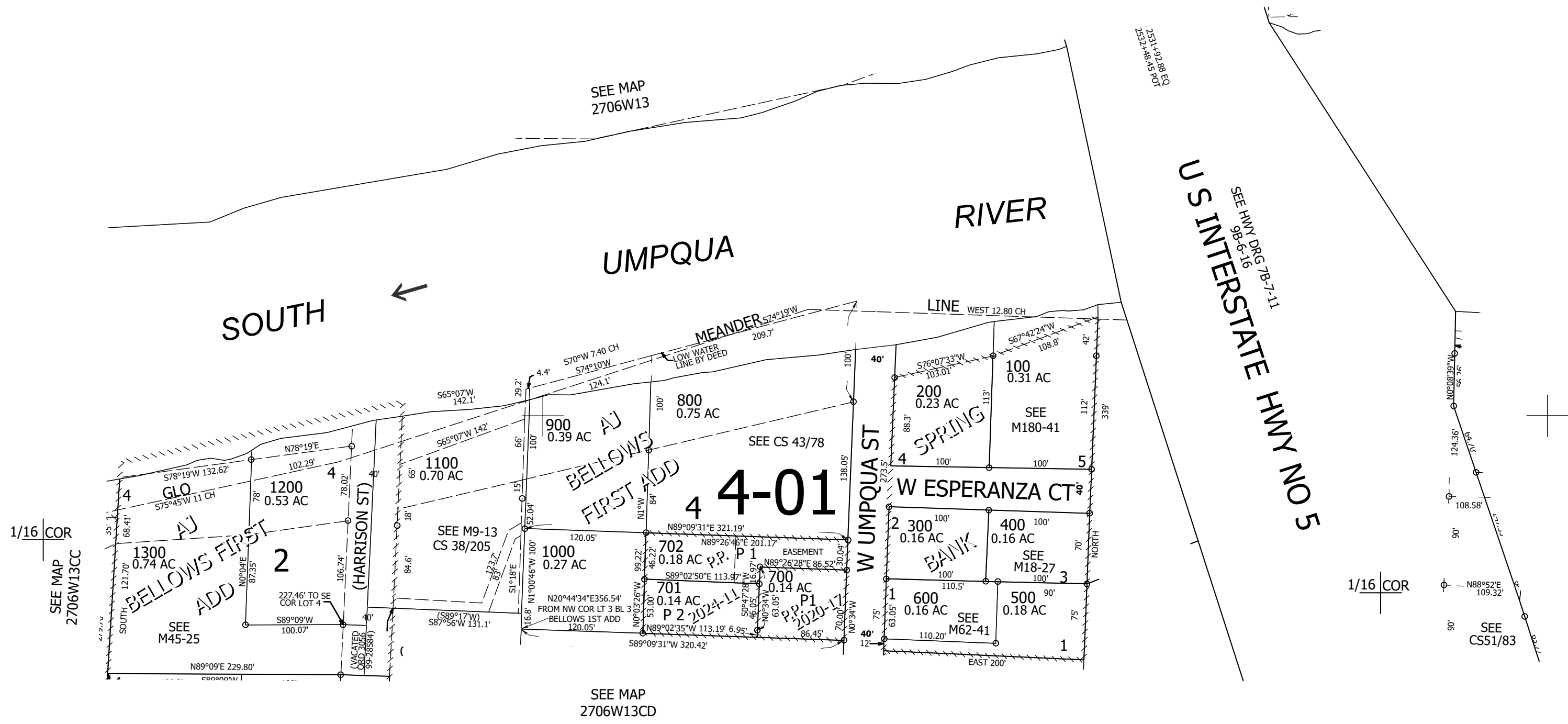
Upper Left:
123°21'47"W 43°13'15"N
4158294E 579441N ft

NE1/4 SW1/4 SEC.13 T.27S. R.06W. W.M.
DOUGLAS COUNTY
1" = 100'

Date Exported 2024-03-26

270613CA
Roseburg

CANCELLED NOS:

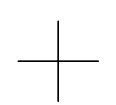
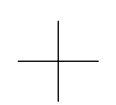
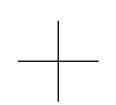


SEE MAP
2706W13CC

SEE MAP
2706W13CD

SEE MAP
2706W13E

SEE CS51/83



270613CA
Roseburg

Lower Right:
123°21'20"W 43°12'58"N
4160257E 577702N ft