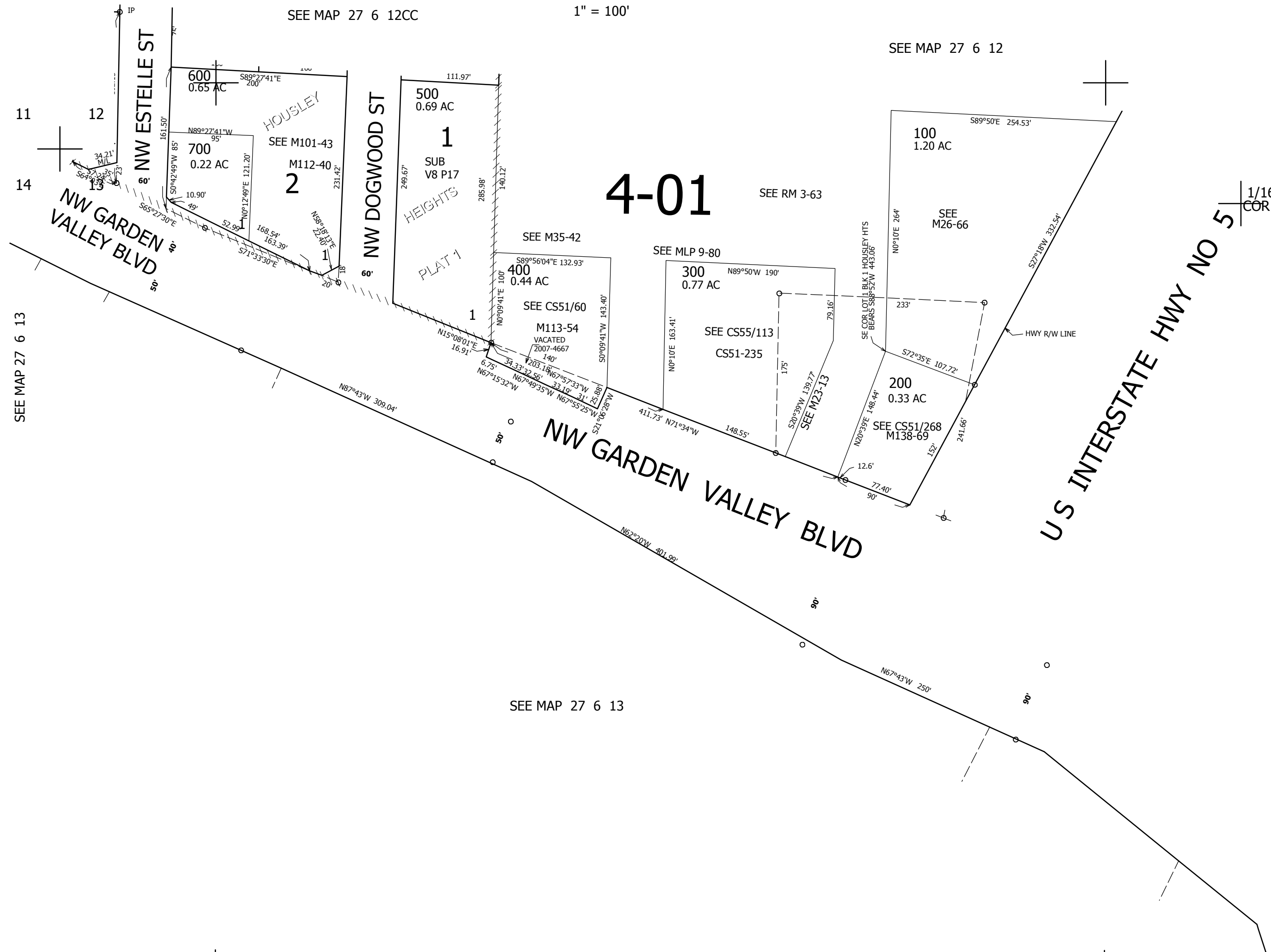


THIS MAP WAS PREPARED FOR ASSESSMENT PURPOSE ONLY.

NW1/4 NW1/4 SEC.13 T.27S. R.6W. W.M. DOUGLAS COUNTY

REVISED ON 2-19-19

27 6 13BB ROSEBURG



4-01

CANCELLED NO'S 300A1 200A1 700A1

SEE MAP 27 6 13BA

SEE MAP 27 6 13

1/16 COR

4,158,500

1/16 COR

581,500

27 6 13BB ROSEBURG