

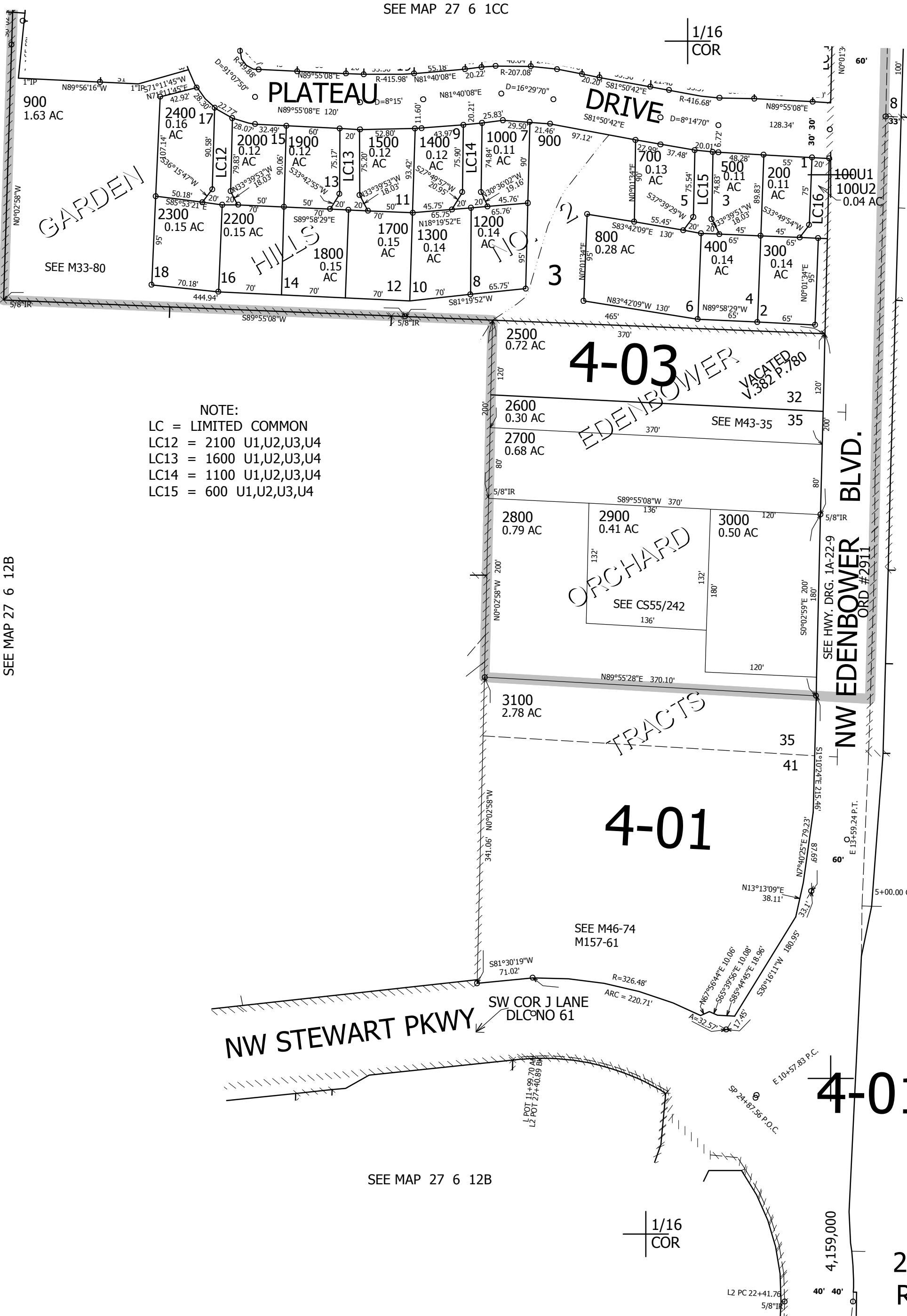
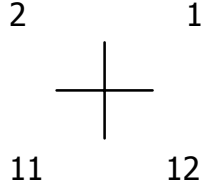
THIS MAP WAS PREPARED FOR ASSESSMENT PURPOSE ONLY.

NW1/4 NW1/4 SEC.12 T.27S. R.6W. W.M. DOUGLAS COUNTY

REVISED ON 2-20-19

27 6 12BB ROSEBURG

1" = 100'



CANCELLED NO'S

SEE MAP 27 6 12B

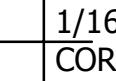
NOTE: LC = LIMITED COMMON LC12 = 2100 U1,U2,U3,U4 LC13 = 1600 U1,U2,U3,U4 LC14 = 1100 U1,U2,U3,U4 LC15 = 600 U1,U2,U3,U4

SEE MAP 27 6 12B

4-01

586,500

27 6 12BB ROSEBURG



SEE MAP 27 6 12B

4,159,000