

THIS MAP WAS PREPARED FOR ASSESSMENT PURPOSE ONLY.

NE1/4 SW1/4 SEC.3 T.27S. R.6W. W.M.
DOUGLAS COUNTY

REVISED ON
1-31-20

27 6 3CA

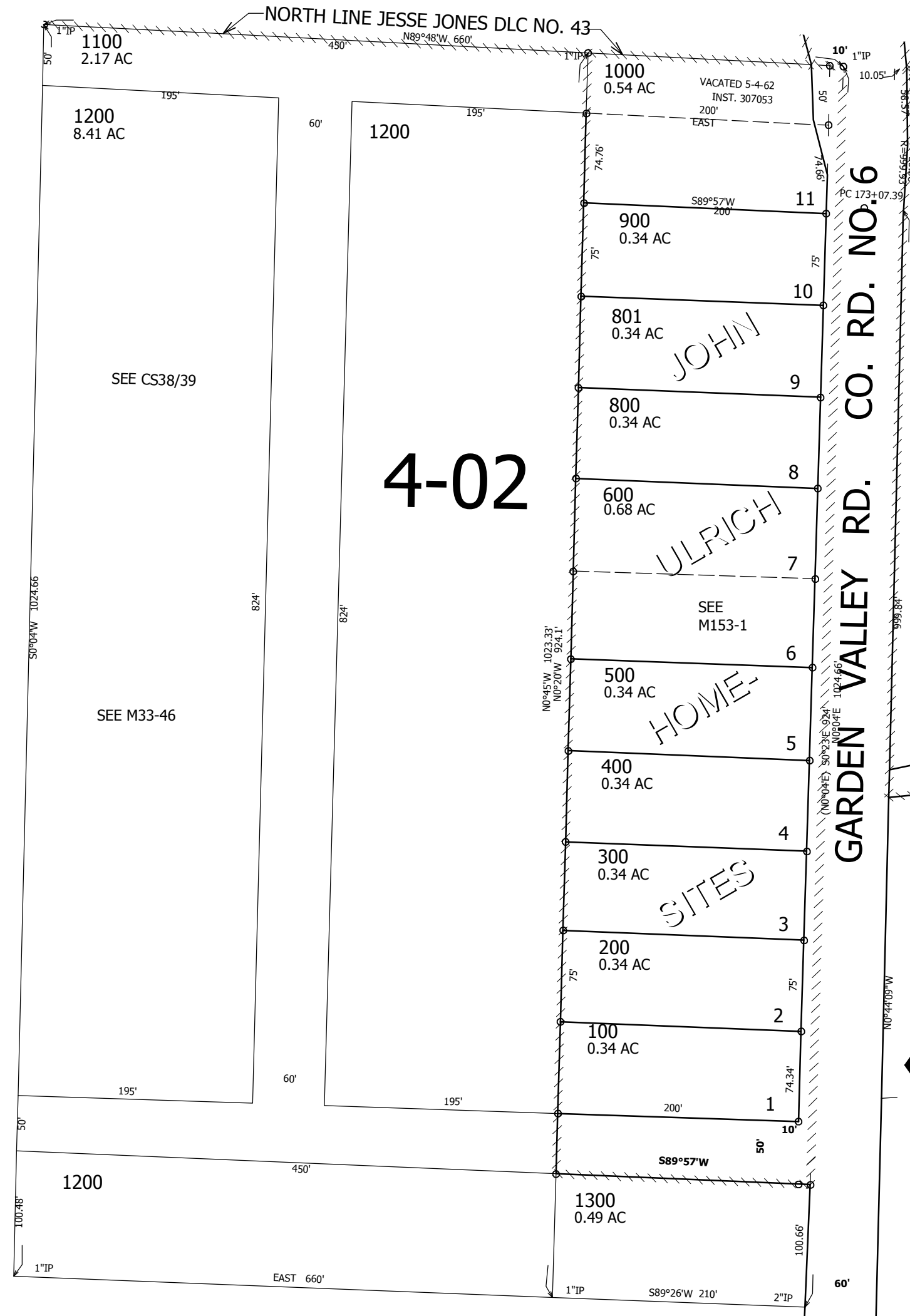
1/16
COR

1" = 100'

CEN
SEC

CANCELLED NO'S
700

SEE MAP 27 6 3



SEE MAP 27 6 3

SEE M31-50

SEE MAP 27 6 3

589,500

1/16
COR

1/16
COR

SEE MAP 27 6 3

4,149,500

27 6 3CA