

THIS MAP WAS PREPARED FOR ASSESSMENT PURPOSE ONLY.

Upper Left:
123°14'53"W 43°12'55"N
4188863E 576414N ft

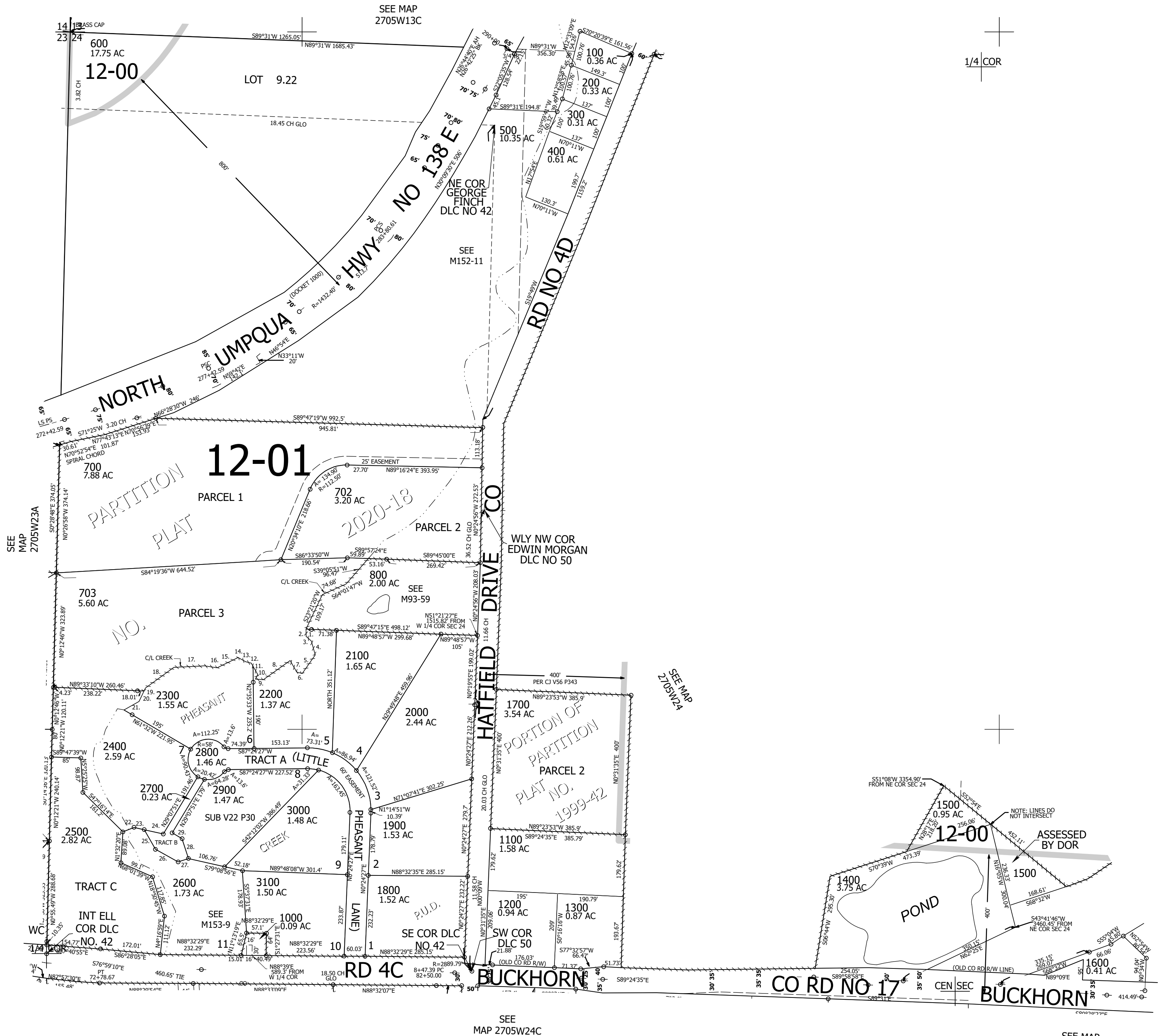
NW1/4 SEC.24 T.27S. R.05W. W.M.
DOUGLAS COUNTY
1" = 200'

Date Exported 2025-09-23

270524B

CANCELLED NOS:
701 901 900
501

- PHEASANT CREEK P.U.D.
1. S89°42'22"W 16.27'
 2. S3°31'46"E 20.57'
 3. S50°14'35"E 20.07'
 4. S17°28'25"E 41.32'
 5. S33°08'23"W 65.28'
 6. N76°34'26"W 16.05'
 7. N31°48'38"W 37.92'
 8. S52°33'39"W 94.5'
 9. N87°18'07"W 22.97'
 10. N25°28'02"E 14.53'
 11. N31°16'17"W 26.87'
 12. N31°16'17"W 10.78'
 13. N78°25'55"W 16.11'
 14. N62°50'36"W 25.28'
 15. S61°57'49"W 67.08'
 16. N82°35'33"W 35.98'
 17. S85°12'28"W 88.89'
 18. S51°58'17"W 100.63'
 19. S23°57'38"W 10.01'
 20. S23°57'38"W 33.13'
 21. S58°05'01"W 49.33'
 22. N66°33'55"E 34.79'
 23. S79°16'05"E 30'
 24. S79°16'05"E 56.04'
 25. S31°33'28"E 64.81'
 26. S62°44'50"E 74.27'
 27. N69°48'52"E 31.19'
 28. N19°41'42"W 59.78'
 29. N60°52'09"W 32.91'



SEE MAP 2705W23A

SEE MAP 2705W13C

SEE M152-11

SEE MAP 2705W24

SEE MAP 2705W24C

SEE MAP 2705W24D

270524B

Lower Right:
123°13'59"W 43°12'21"N
4192790E 572814N ft