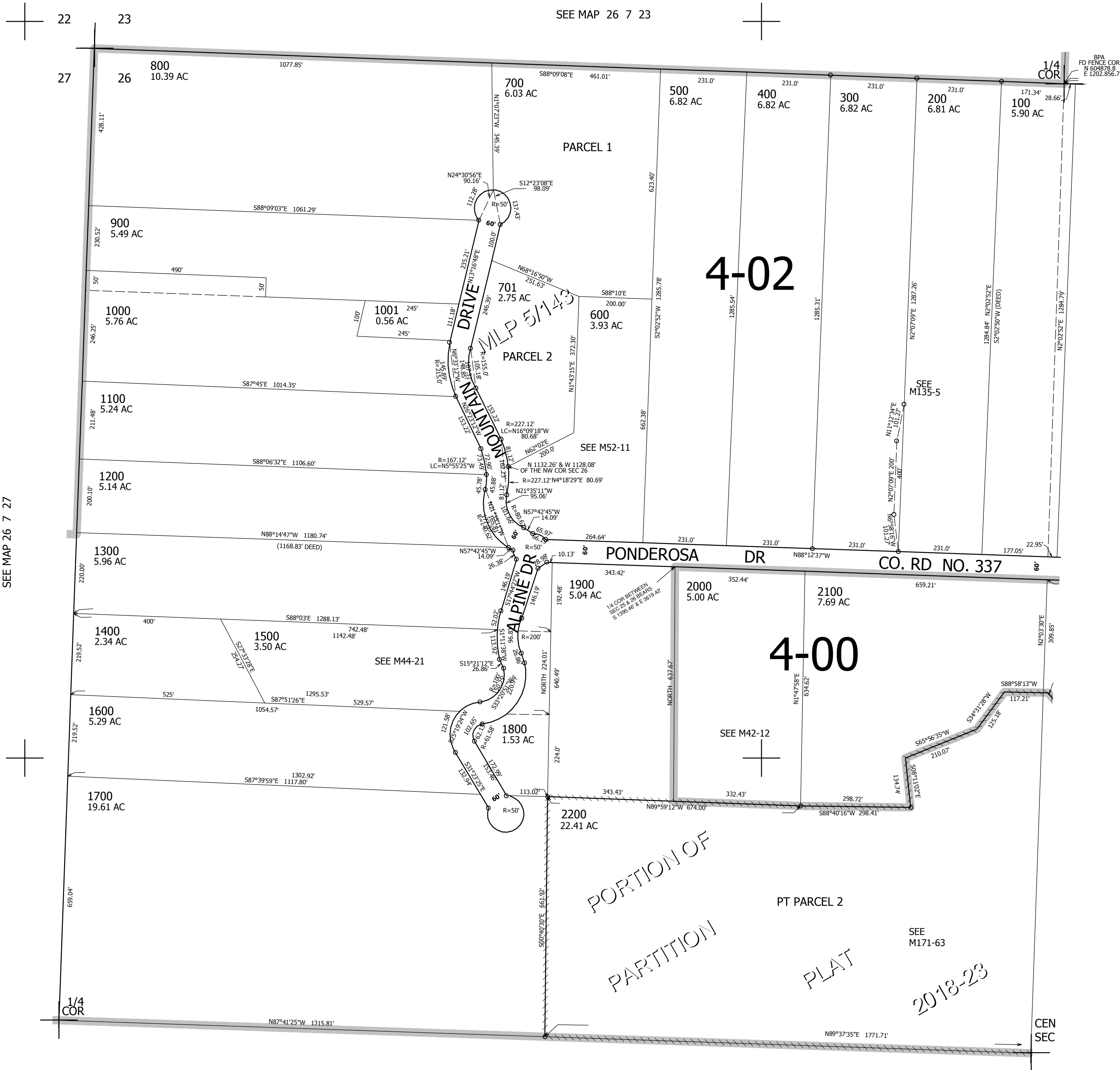


THIS MAP WAS PREPARED FOR ASSESSMENT PURPOSE ONLY.

NW1/4 SEC.26 T.26S. R.7W. W.M.  
DOUGLAS COUNTY  
1" = 200'

REVISED ON  
7-2-18

26 7 26B



CANCELLED NO'S  
901 301 201

SEE MAP 26 7 26A

603,000

SEE MAP 26 7 26C

4,123,000

26 7 26B