

THIS MAP WAS PREPARED FOR ASSESSMENT PURPOSE ONLY.

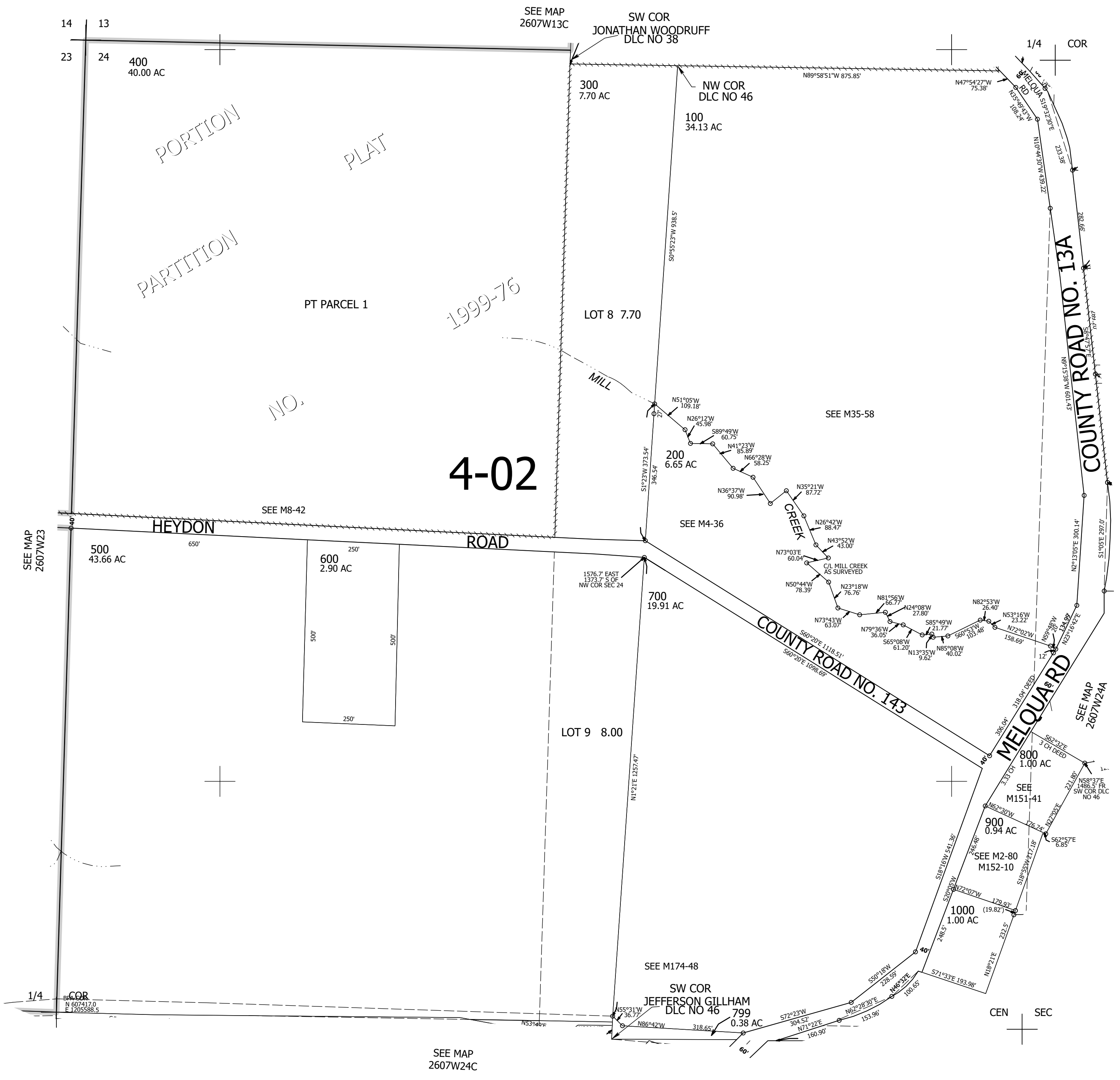
Upper Left:
123°29'18"W 43°18'10"N
4125989E 610477N ft

NW1/4 SEC.24 T.26S. R.07W. W.M.
DOUGLAS COUNTY
1" = 200'

Date Exported 2026-06-11

260724B

CANCELLED NOS:
200M1 800M1



Lower Right:
123°28'23"W 43°17'36"N
4129915E 606877N ft

260724B