

THIS MAP WAS PREPARED FOR ASSESSMENT PURPOSE ONLY.

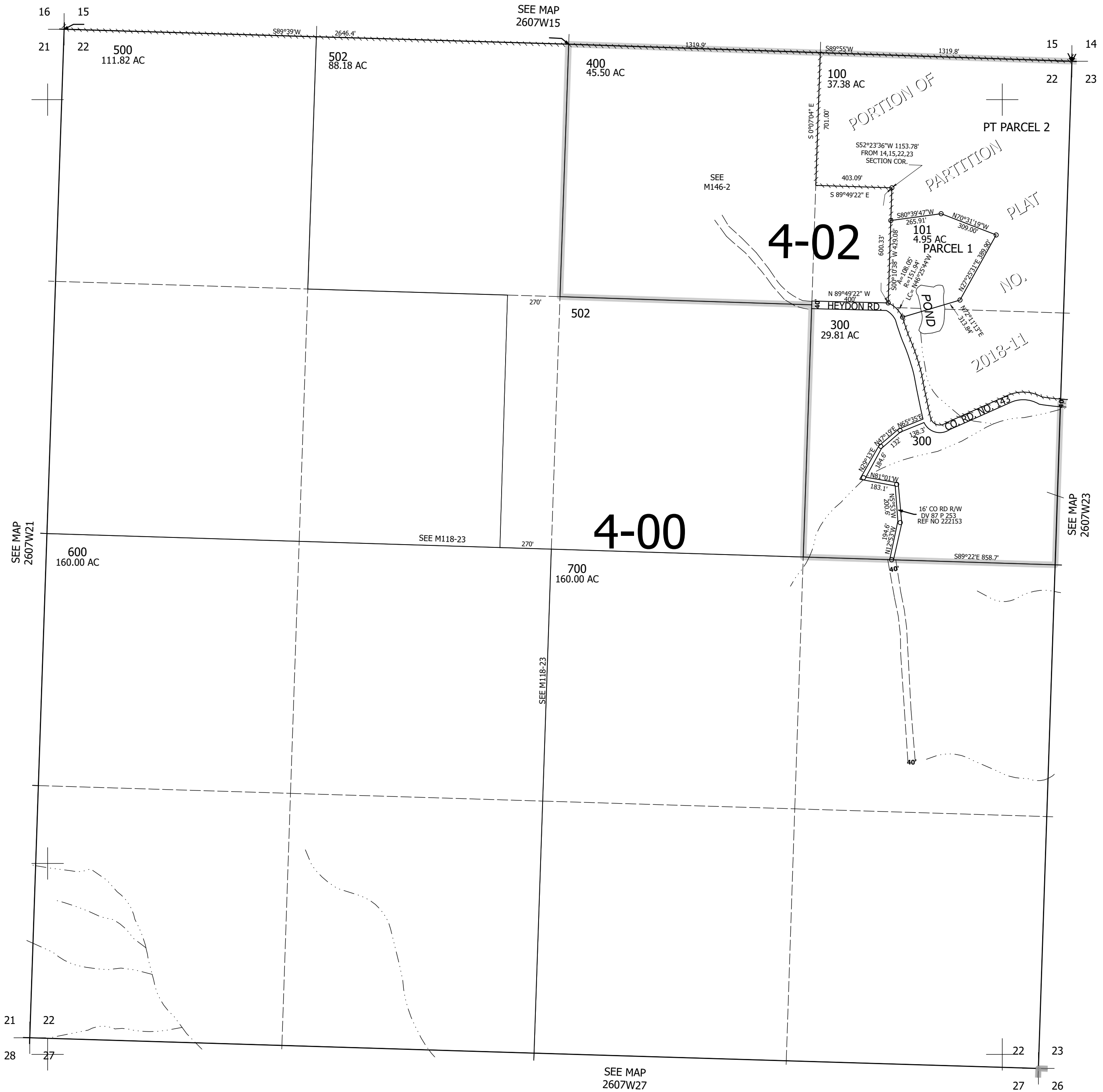
Upper Left:  
123°31'51"W 43°18'13"N  
4114706E 611138N ft

SEC.22 T.26S. R.07W. W.M.  
DOUGLAS COUNTY  
1" = 400'

Date Exported 2026-06-11

260722

CANCELLED NOS:  
501 503 401 200



260722

Lower Right:  
123°30'2"W 43°17'7"N  
4122555E 604182N ft