

THIS MAP WAS PREPARED FOR ASSESSMENT PURPOSE ONLY.

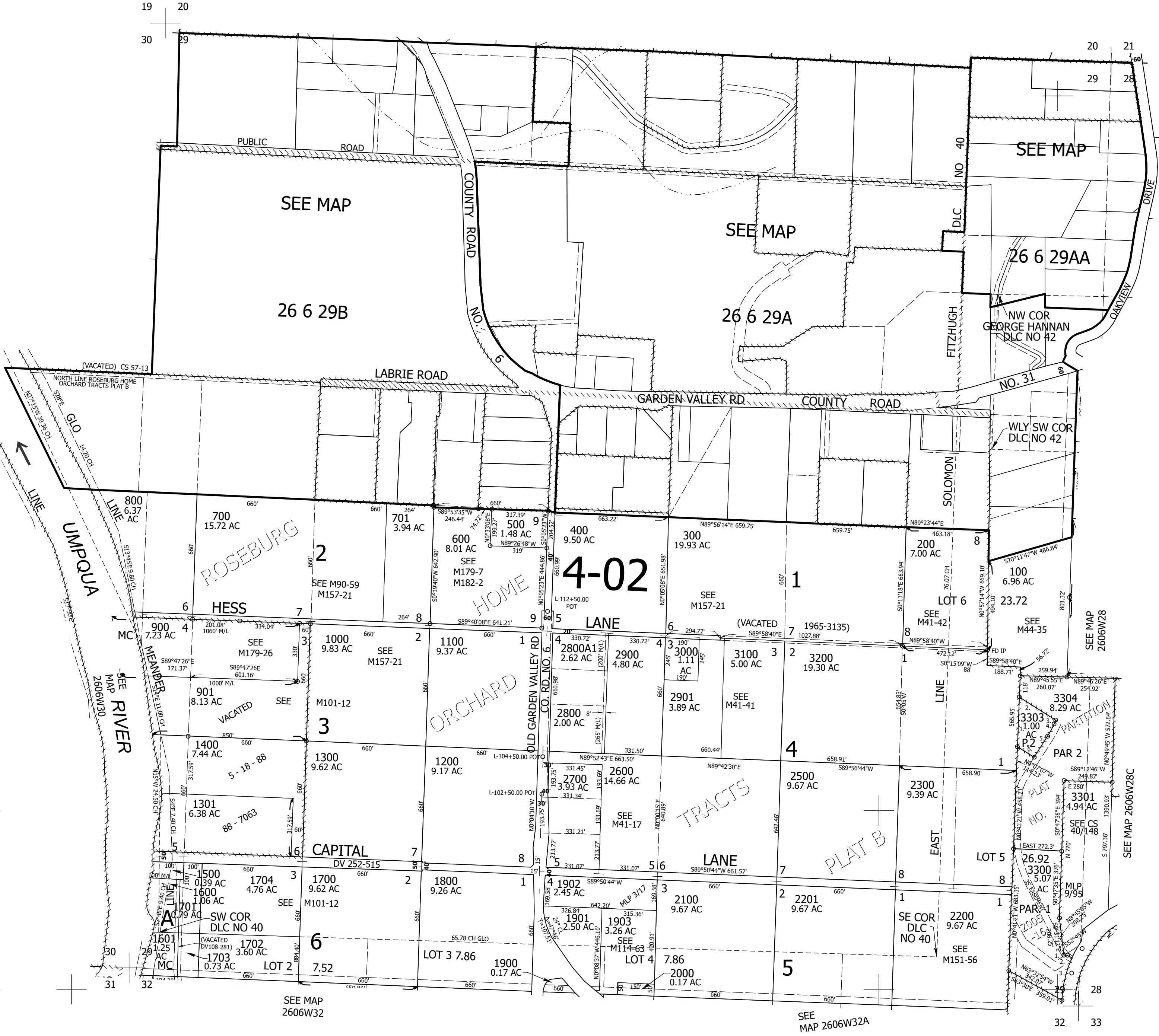
Upper Left:
123°27'10"W 43°17'20"N
4135264E 605094N ft

SEC.29 T.26S. R.06W. W.M.
DOUGLAS COUNTY
1" = 400'

Date Exported 2025-03-13

CANCELLED NOS:
2400 902 903
1302 1401 3302
501 601 602

- PARCEL 3303
1. N0°07'07"W 277'
 2. S60°15'57"E 241.8'
 3. S20°23'44"W 22.81'
 4. LC=S25°03'48"W 78.58'
 5. S29°44'03"W 139.42'
 6. N60°15'57"W 114.02'
- TAXLOT 3300
1. N89°14'04"E 19.47'
 2. S62°28'10"E 36.22'
 3. LC=S13°18'45"W 208.44'
 4. R=644.1' A=209.36'
 5. S1°44'16"W 35.03'



SEE MAP 2606W28C

SEE MAP 2606W32A

SEE MAP 2606W32

Lower Right:
123°25'21"W 43°16'14"N
4143113E 598139N ft