

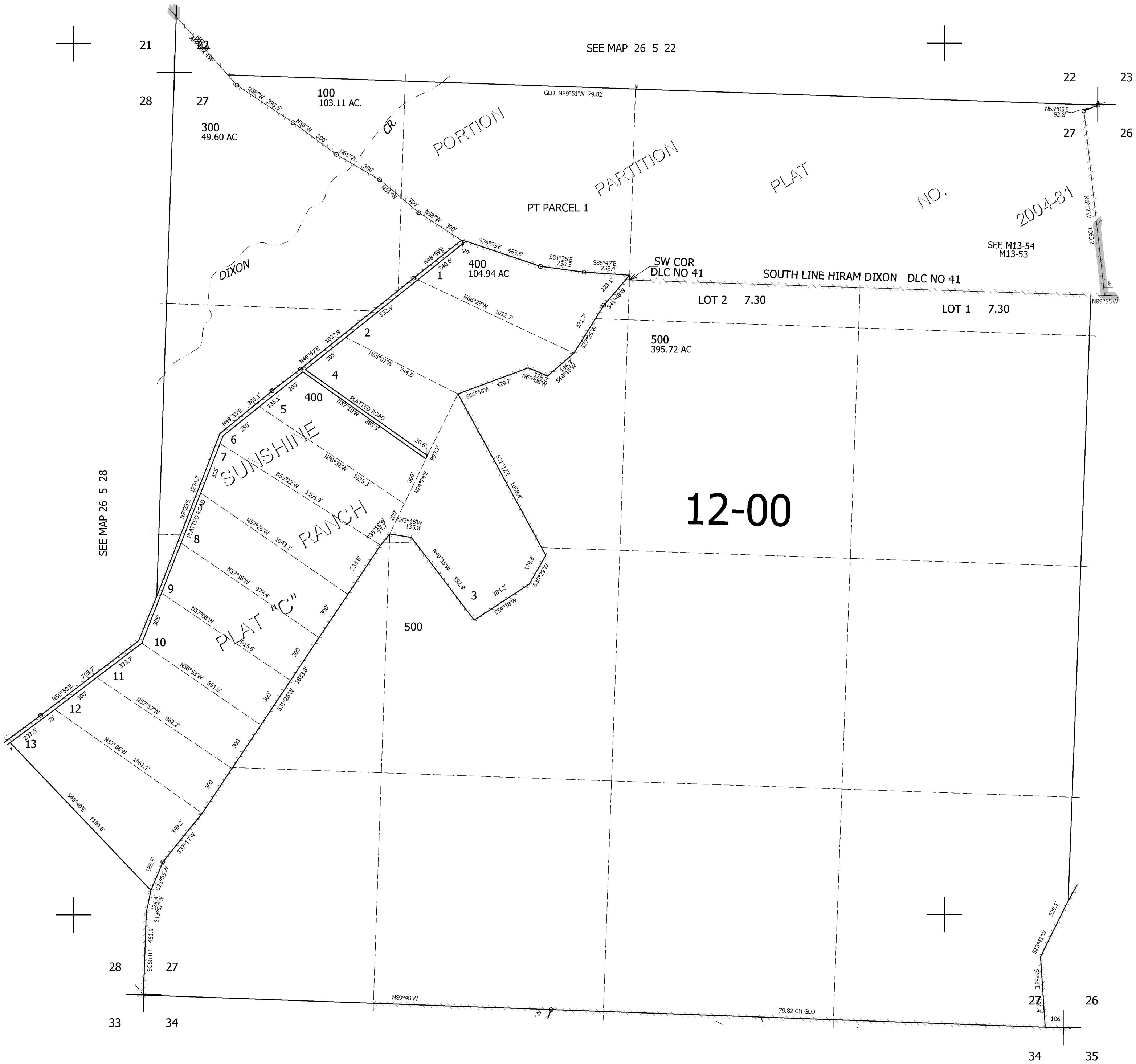
THIS MAP WAS PREPARED FOR ASSESSMENT PURPOSE ONLY.

SEC.27 T.26S. R.5W. W.M. DOUGLAS COUNTY

REVISED ON 3-3-05

26 5 27

1" = 400'



CANCELLED NO'S 200

SEE MAP 26 5 26

SEE MAP 26 5 26C

598,000

SEE MAP 26 5 34

4,184,000

26 5 27