

THIS MAP WAS PREPARED FOR ASSESSMENT PURPOSE ONLY.

SW1/4 SEC.23 T.26S. R.5W. W.M.  
DOUGLAS COUNTY

1" = 200'

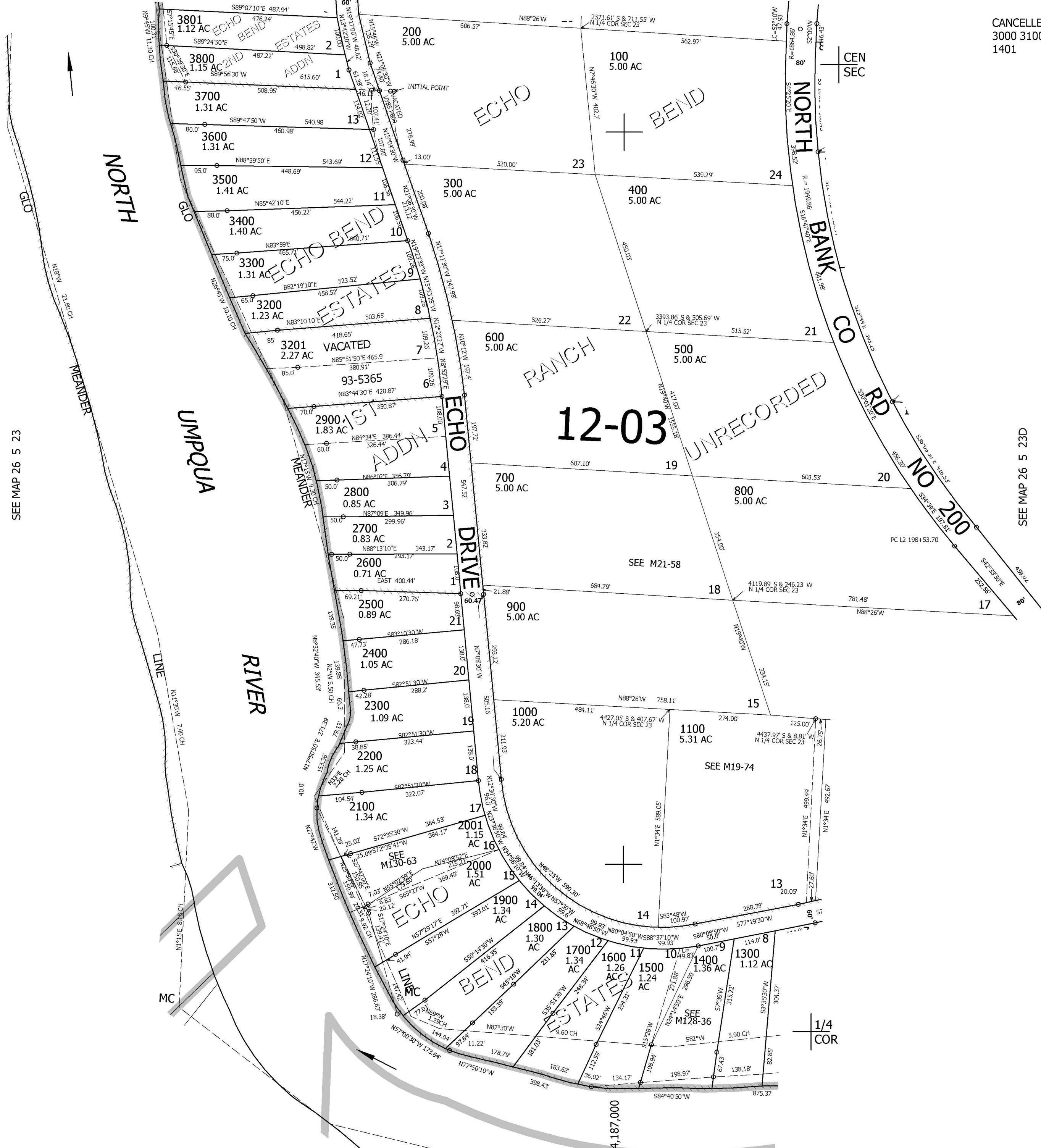
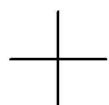
REVISED ON  
11-29-02

26 5 23C

SEE MAP 26 5 23B

CANCELLED NO'S  
3000 3100 1200  
1401

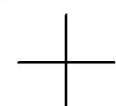
1/4  
COR



SEE MAP 26 5 23

SEE MAP 26 5 23D

22 23  
27 26



1/4  
COR

SEE MAP 26 5 26BA

603,000

26 5 23C