

THIS MAP WAS PREPARED FOR ASSESSMENT PURPOSE ONLY.

SW1/4 SE1/4 SEC.19 T.26S. R.5W. W.M.  
DOUGLAS COUNTY

REVISED ON

26 5 19DC

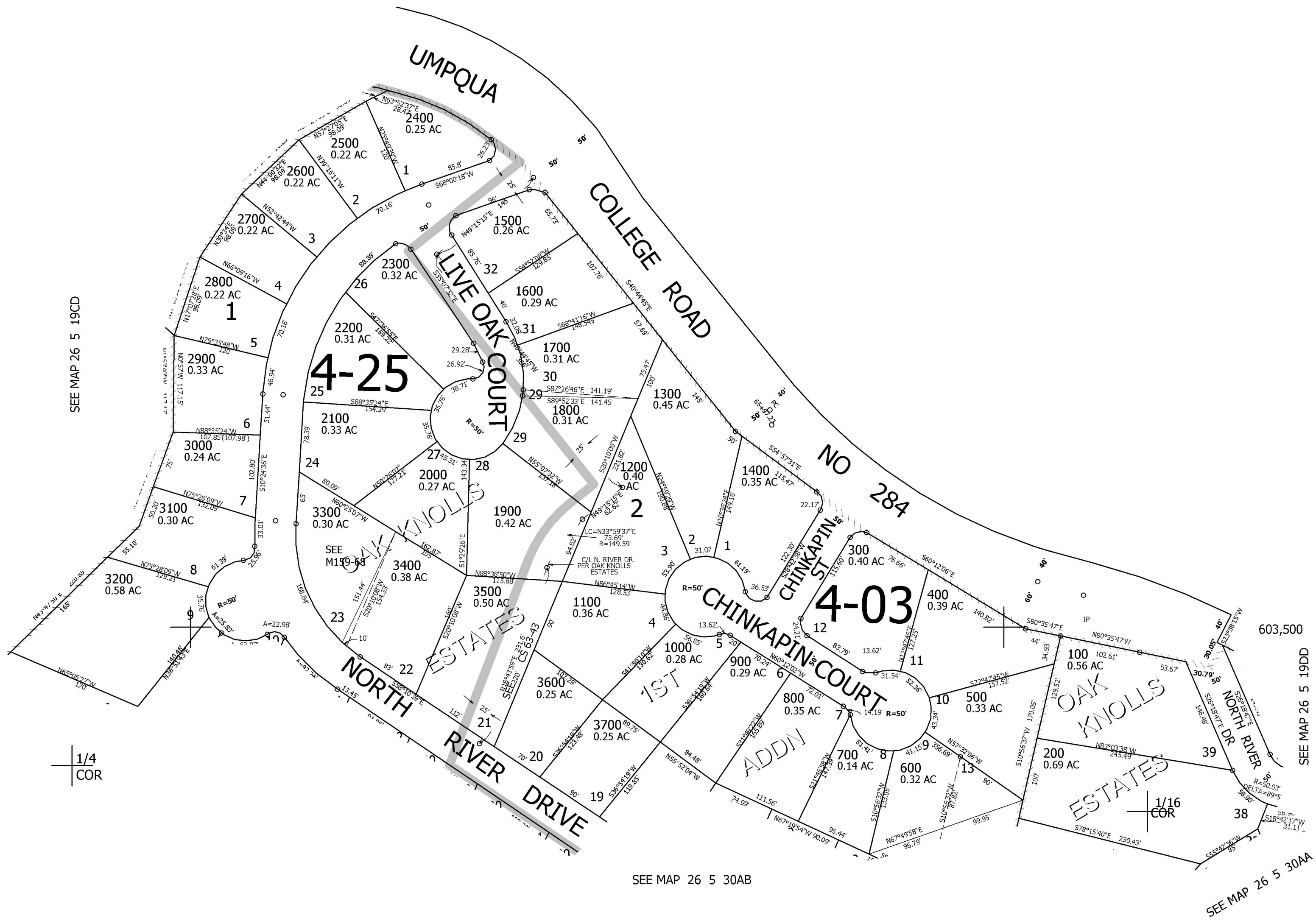
1" = 100'

1/16  
COR

1/16  
COR

CANCELLED NO'S

SEE MAP 26 5 19



SEE MAP 26 5 19CD

1/4  
COR

SEE MAP 26 5 30AB

SEE MAP 26 5 19DD

SEE MAP 26 5 30AA

4,167,500

26 5 19DC