

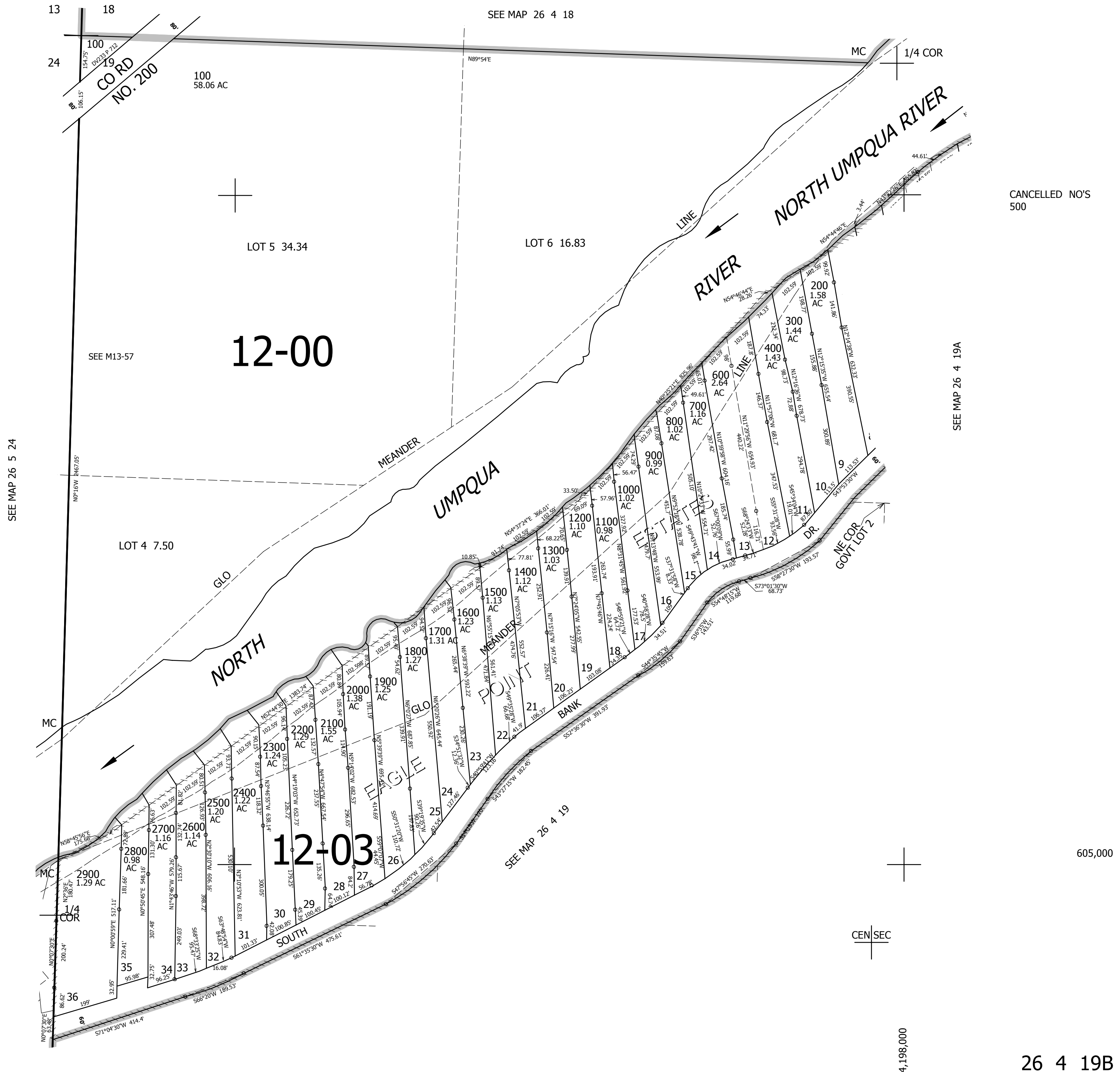
THIS MAP WAS PREPARED FOR ASSESSMENT PURPOSE ONLY.

NW1/4 SEC.19 T.26S. R.4W. W.M. DOUGLAS COUNTY

REVISED ON
3-8-13

26 4 19B

1" = 200'



CANCELLED NO'S
500

605,000

4,198,000

26 4 19B