

THIS MAP WAS PREPARED FOR ASSESSMENT PURPOSE ONLY.

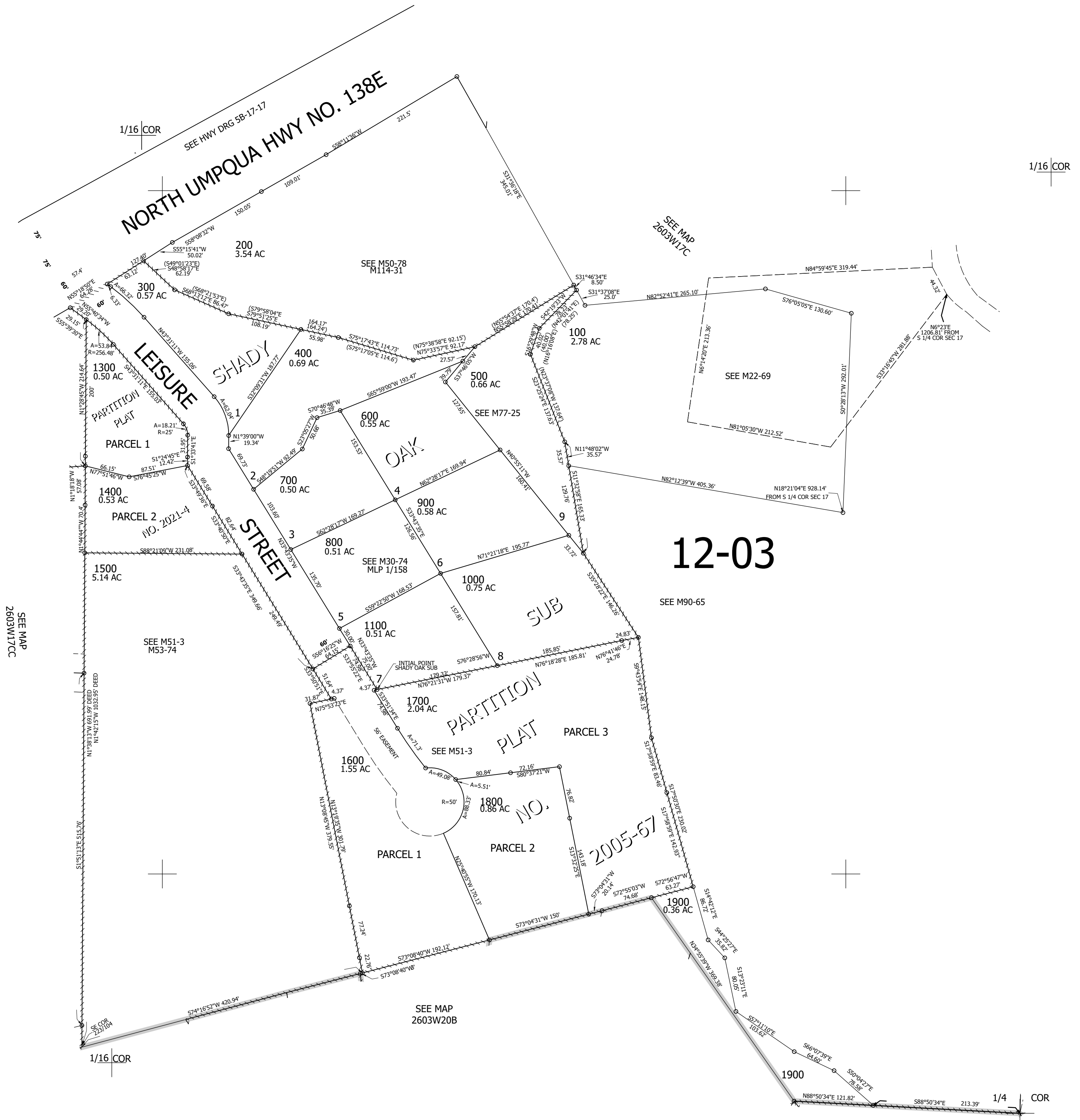
Upper Left:
123°5'10"W 43°18'19"N
4233040E 607828N ft

SE1/4 SW1/4 SEC.17 T.26S. R.03W. W.M.
DOUGLAS COUNTY
1" = 100'

Date Exported 2026-06-11

260317CD

CANCELLED NOS:
1200 1701 1702
1801 1802 1401
200A1



12-03

260317CD

Lower Right:
123°4'42"W 43°18'3"N
4235012E 606089N ft