

NW1/4 SEC.7 T.24S. R.5W. W.M.
DOUGLAS COUNTY

REVISED ON
1-29-01

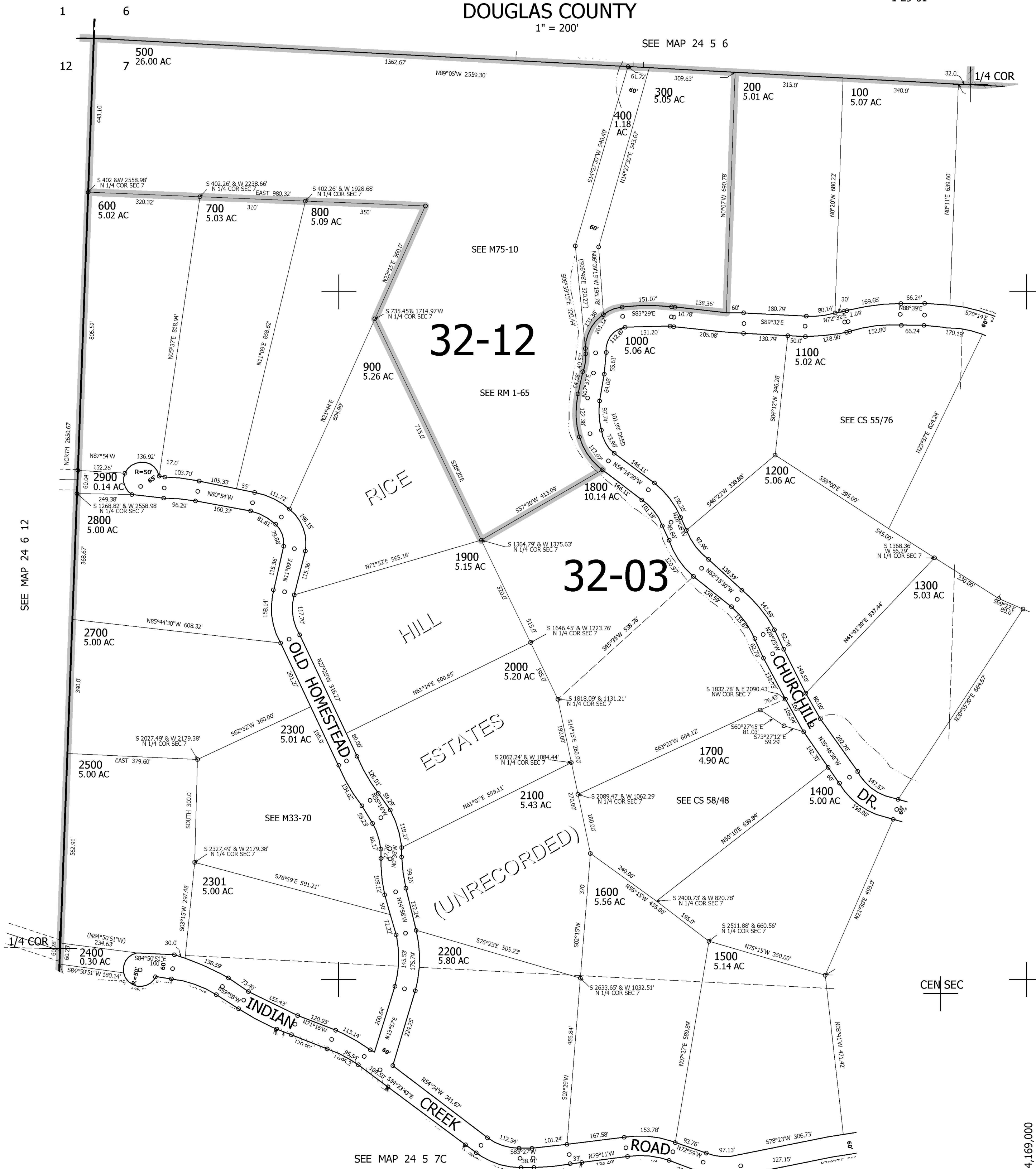
24 5 7B

1" = 200'

SEE MAP 24 5 6

THIS MAP WAS PREPARED FOR
ASSESSMENT PURPOSE ONLY.

CANCELLED NOS
2600



SEE MAP 24 6 12

SEE MAP 24 5 7A

680,000

4,169,000

24 5 7B

SEE MAP 24 5 7C