

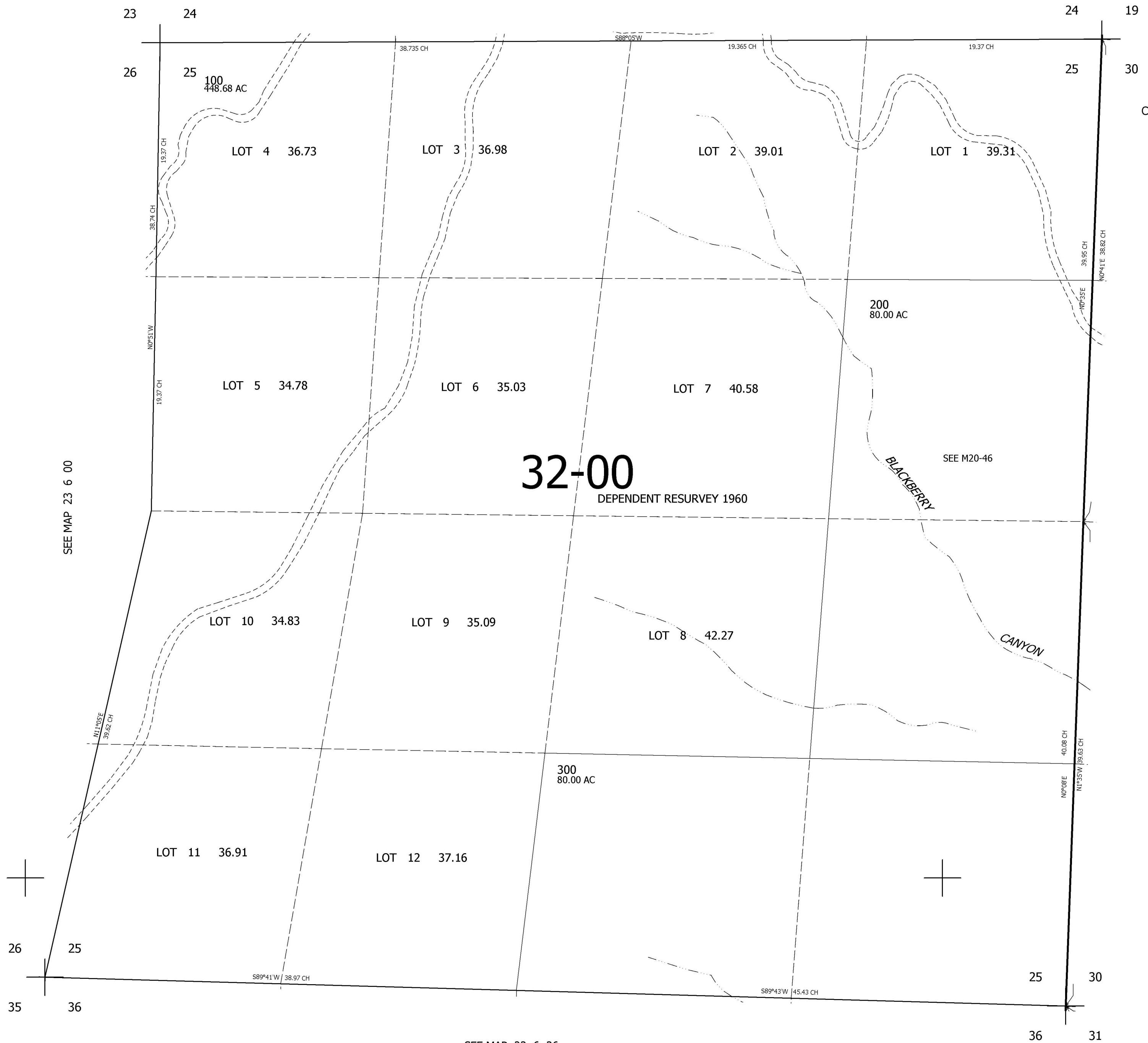
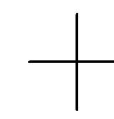
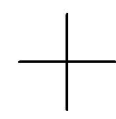
THIS MAP WAS PREPARED FOR ASSESSMENT PURPOSE ONLY.

SEC.25 T.23S. R.6W. W.M.  
DOUGLAS COUNTY  
1" = 400'

REVISED ON

23 6 25

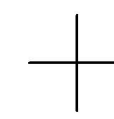
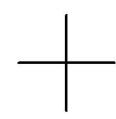
SEE MAP 23 6 00



CANCELLED NOS

SEE MAP 23 6 00

SEE MAP 23 5 30



26 25  
35 36

25 30  
36 31

SEE MAP 23 6 36

694,000

4,166,000

23 6 25