

THIS MAP WAS PREPARED FOR ASSESSMENT PURPOSE ONLY.

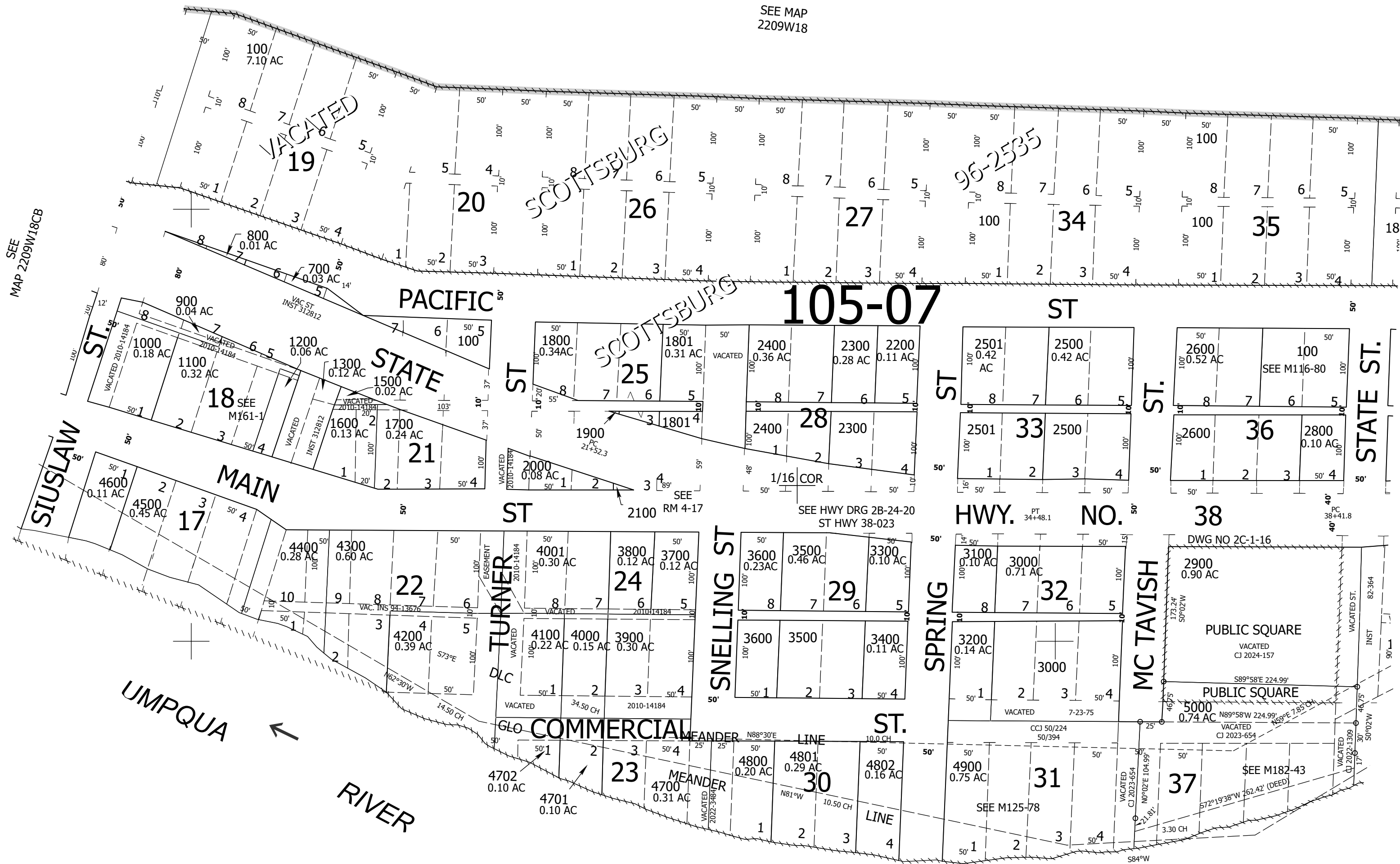
Upper Left:  
123°49'16"W 43°39'23"N  
4042609E 742599N ft

NE1/4 SW1/4 SEC.18 T.22S. R.09W. W.M.  
DOUGLAS COUNTY  
1" = 100'

Date Expored 2025-02-18

220918CA

CANCELLED NOS:  
200 300 400  
500 600 1400  
2700 2900A1 100M1  
2901 2902 2903



SEE MAP 2209W18DB

SEE MAP 2209W18

220918CA

Lower Right:  
123°48'48"W 43°39'7"N  
4044586E 740879N ft