

THIS MAP WAS PREPARED FOR ASSESSMENT PURPOSE ONLY.

Upper Left:  
123°18'45"W 43°39'3"N  
4177002E 735589N ft

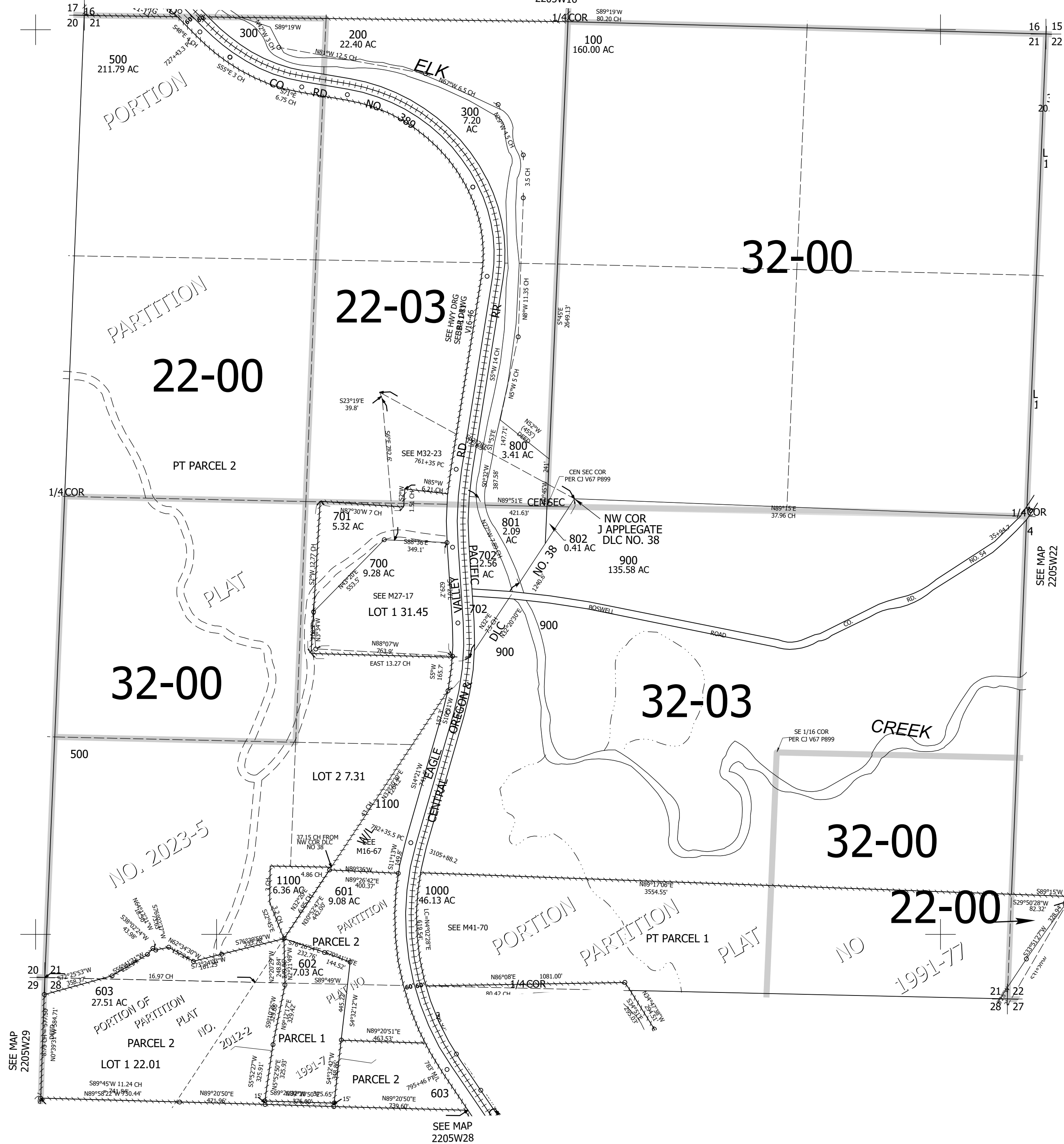
SEC.21 T.22S. R.05W. W.M.  
DOUGLAS COUNTY  
1" = 400'

Date Exported: 2/27/2023 9:43 AM

220521 &

CANCELLED NOS:  
400 1001 1002  
1003 600

SEE MAP  
2205W16



SEE MAP  
2205W29

SEE MAP  
2205W28

SEE MAP  
2205W22

Lower Right:  
123°16'57"W 43°37'56"N  
4184755E 728567N ft

220521 &