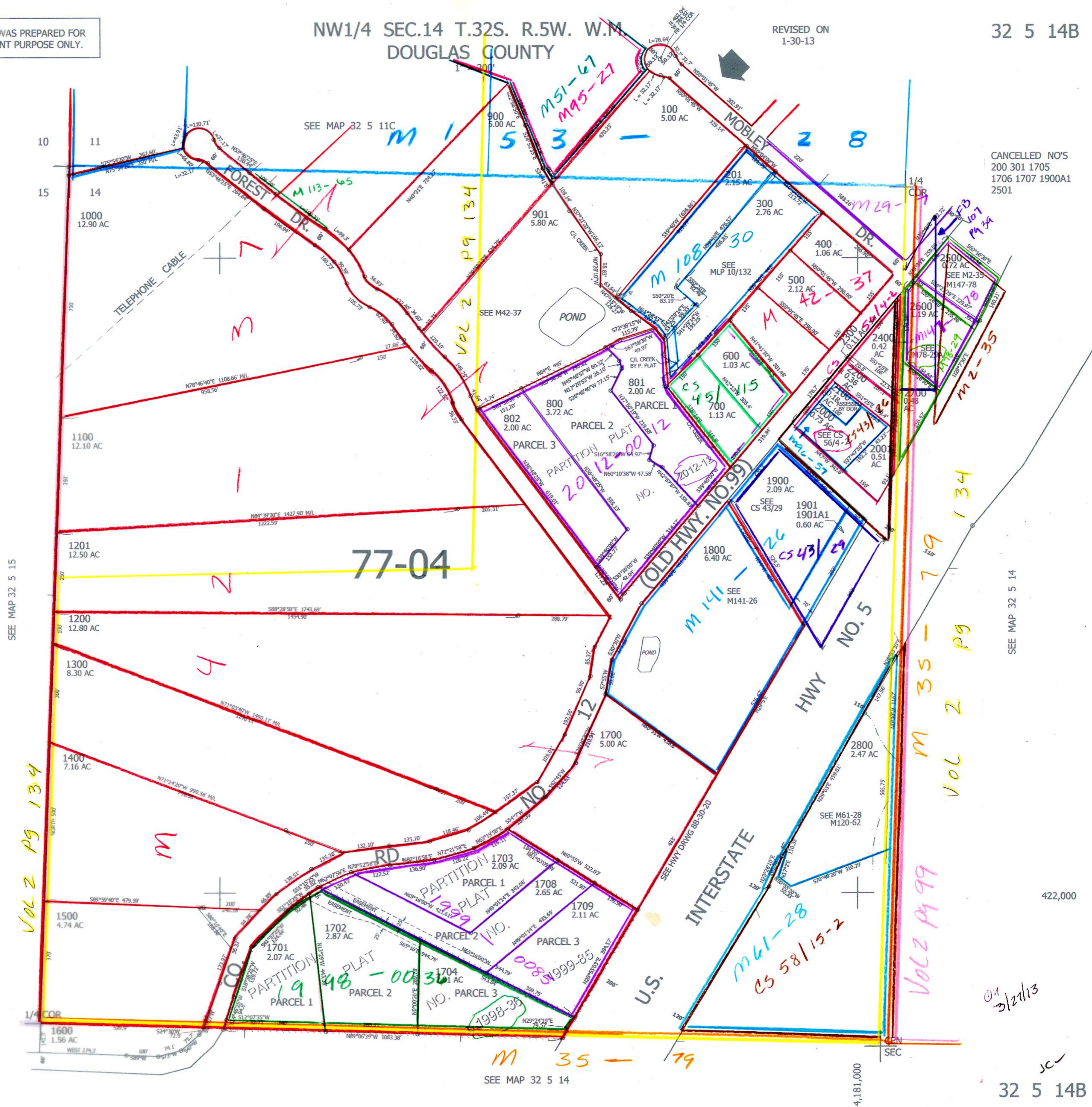


THIS MAP WAS PREPARED FOR ASSESSMENT PURPOSE ONLY.

NW1/4 SEC.14 T.32S. R.5W. W.M. DOUGLAS COUNTY

REVISED ON 1-30-13

32 5 14B



CANCELLED NO'S  
200 301 1705  
1706 1707 1900A1  
2501

SEE MAP 32 5 15

SEE MAP 32 5 14

Vol 2 Pg 134

M 35 - 79  
Vol 2 Pg 99

SEE MAP 32 5 14

on 2/21/13

32 5 14B