

THIS MAP WAS PREPARED FOR ASSESSMENT PURPOSE ONLY.

NW1/4 NW1/4 SEC.7 T.27S. R.5W. W.M. DOUGLAS COUNTY

27 5 7BB ROSEBURG

REVISED ON 10-31-12

1" = 100'

SEE MAP 27 5 6CC

SEE MAP 27 5 6CD

M 18-17 & M 20-4

NE VINE STREET (R/W)

PARKER RD CO RD NO 322

SEE MAP 27 5 7BA

SEE MAP 27 5 7BC

586,000

27 5 7BB ROSEBURG

4100 10.94 AC

6

7

157

156

173

173

4200 0.74 AC

172

4300 4.76 AC

171

4400 4.80 AC

1/16 COR

160

3800 0.84 AC

3500 9.55 AC

4-03

4-01

162

4500 0.62 AC

4700 3.89 AC

4600 1.04 AC

CS 51/253

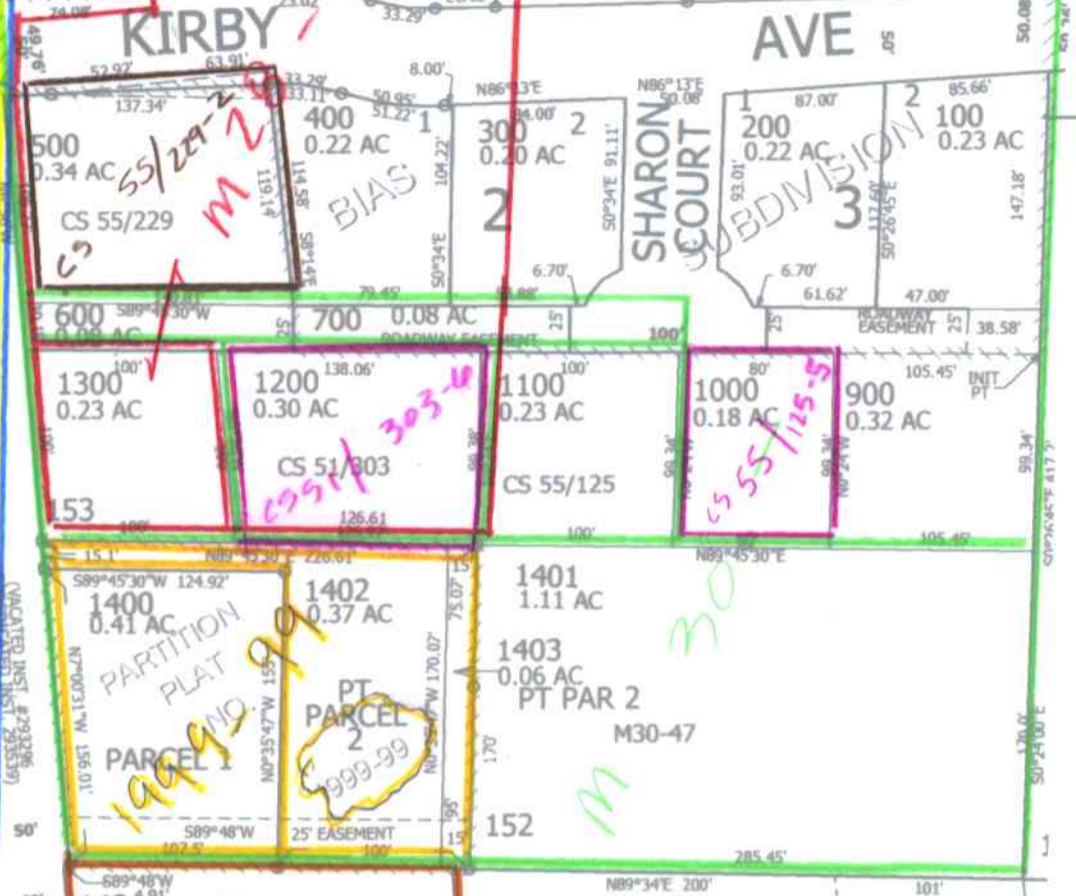
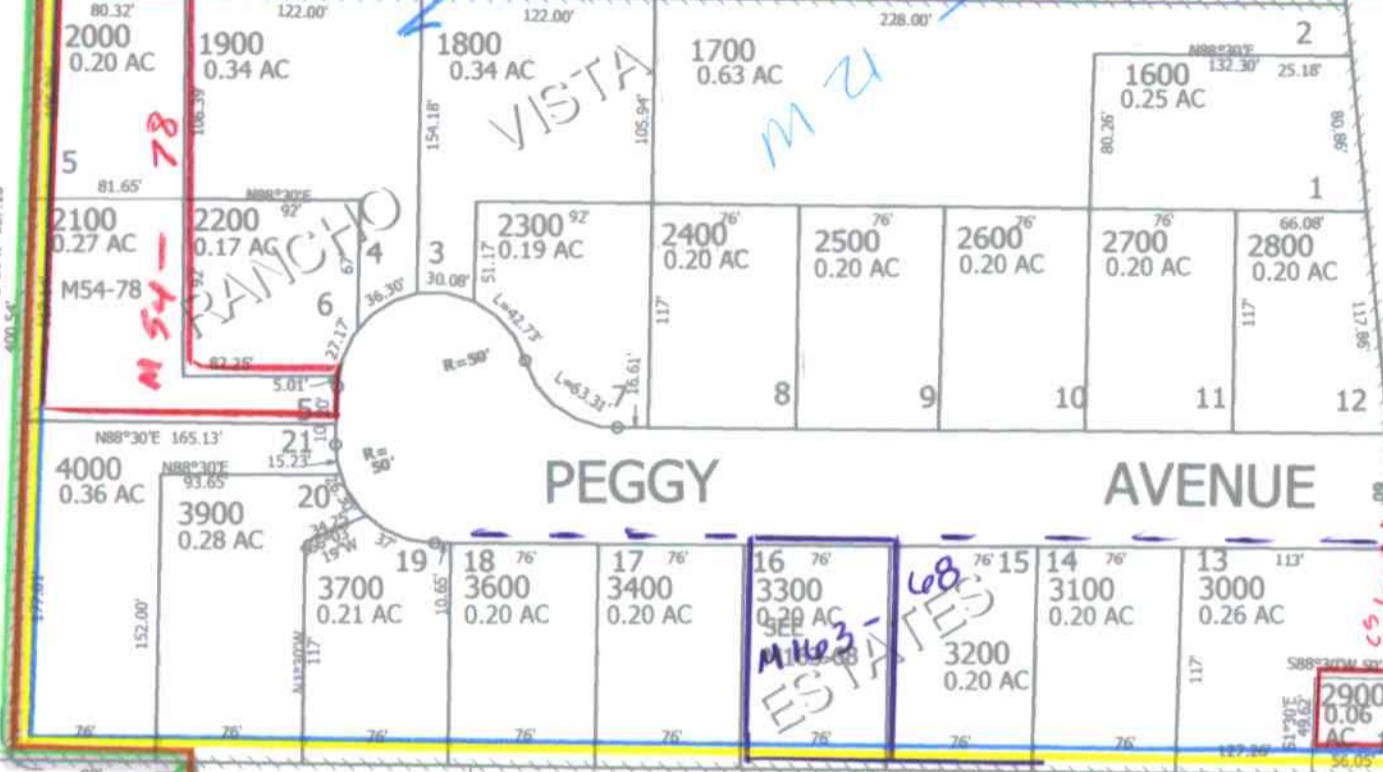
KIRBY AVE

AVE

PEGGY AVENUE

CANCELLED NO'S 101 800

ROSEBURG ORCHARDS COMPANY TRACT 1 PLAT 1



M 30

M 19

M 19

M 54/13

M 30

M 30

M 30

M 30

M 30

M 30

M 30

M 30

M 30

M 30

M 30

M 30

M 30

M 30

M 30

M 30

M 30

M 30

M 30

1/16 COR

SCV

27 5 7BB ROSEBURG