

# CADASTRAL SURVEY LOCATED IN THE NE 1/4 OF SECTION 21, TOWNSHIP 31 SOUTH, RANGE 9 WEST, W.M., DOUGLAS COUNTY, OREGON.

FILED  
DATE: 12/30/2025 BY: *DA*  
THIS SURVEY CONSISTS OF:  
MAP: M186-58A & B  
NARRATIVE: \_\_\_\_\_  
CORNER RPT: \_\_\_\_\_  
DOUGLAS COUNTY SURVEYOR

### NOTE 1

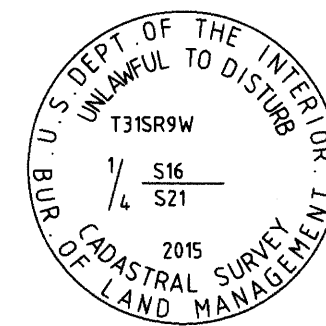
1/4 CORNER OF SECTIONS 16 & 21 PLSS 340400

FOUND MONUMENT:  
A 2-1/2" STAINLESS STEEL POST WITH 3" BRASS CAP AS SET PER BLM MAP 7956 AND MARKED AS SHOWN.

FOUND BT'S:  
A 60" ROTTED FIR STUMP WITH X-CHOP AND TAG BEARS N42°E 70.9' (N41°E 71.3' PER MAP FILE M20-16).  
A 23" FIR WITH HEALED FACE AND TAG BEARS S80°E 26.4' (PER BLM MAP 7956).  
A 35" TIN CAPPED FIR STUMP STANDS 6' TALL WITH VISIBLE SCRIBE IN FACE AND TAG BEARS S54°E 60.9' (64.3' PER MAP FILE M20-16).

FOUND BO'S:  
AN ALUMINUM POST BEARS NORTH 1.0' (NO RECORD).  
A 5/8" IRON ROD WITH 3-1/2" ALUMINUM CAP BEARS N38°09'E 23.1' (PER BLM MAP 7957).

NEW BT'S:  
A 17" FIR, FACED AND SCRIBED "1/4 S21 BT" WITH X-CHOP AND TAG BEARS S17°W 33.0' TO A SPIKE AT SIDE CENTER.  
A 12" CHINQUAPIN, FACED AND SCRIBED "1/4 S21 BT" WITH X-CHOP AND TAG BEARS S42°W 16.6' TO A SPIKE AT SIDE CENTER.

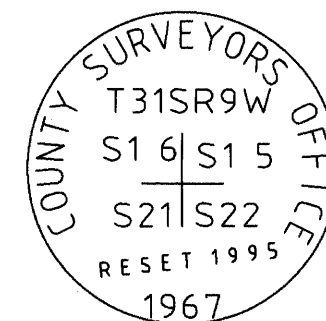


### NOTE 2

SECTION CORNER COMMON TO SECTIONS 15, 16, 21 & 22 PLSS 400400

FOUND MONUMENT:  
A 1-1/2" IRON PIPE WITH 2-1/2" BRASS CAP AS SET PER C.S. FILE NO. 64/58-4 AND MARKED AS SHOWN. ALUMINUM POST FOUND ALONGSIDE.

FOUND BT'S:  
AN 11" HEMLOCK WITH VISIBLE SCRIBE AND TAG BEARS N48°E 9.8' (DOUGLAS FIR PER C.S. FILE NO. 65/92-11).  
AN 18" DOUGLAS FIR STUMP STANDS 7' TALL WITH ROTTED FACE AND TAG BEARS N86°E 18.1' (PER C.S. FILE NO. 64/58-4).  
A 19" ROTTED DOUGLAS FIR STUMP STANDS 5' TALL BEARS S43°E 36.5' (PER C.S. FILE NO. 64/58-4).  
A 7" DOUGLAS FIR WITH HEALED FACE AND TAG BEARS S21°E 24.0' (PER C.S. FILE NO. 65/92-11).  
A 17" DOUGLAS FIR WITH HEALED FACE AND TAG BEARS S20°W 24.0' (PER C.S. FILE NO. 64/58-4).  
AN 11" MADRONE WITH HEALED FACE AND TAG BEARS N20°W 28.0' (PER C.S. FILE NO. 64/58-4).

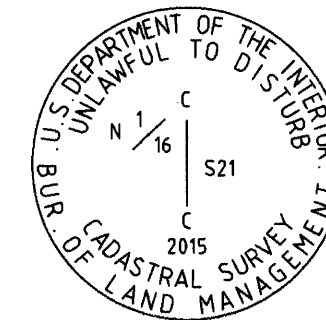


### NOTE 3

CENTER-NORTH 1/16 CORNER OF SECTION 21 PLSS 340360

FOUND MONUMENT:  
A 2-1/2" STAINLESS STEEL POST WITH 3" BRASS CAP AS SET PER BLM MAP 7956 AND MARKED AS SHOWN. ALUMINUM POST FOUND ALONGSIDE.

FOUND BT'S:  
A 13" FIR WITH HEALED FACE AND TAG BEARS N85°W 16.5' (PER BLM MAP 7956).  
A 19" FIR WITH HEALED FACE AND TAG BEARS N06°E 31.1' (PER BLM MAP 7956).

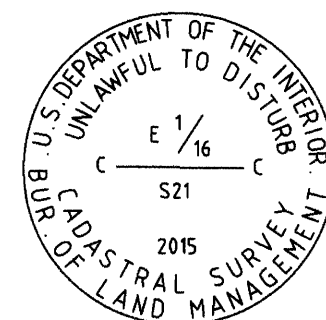


### NOTE 4

NORTH-EAST 1/16 CORNER OF SECTION 21 PLSS 360360

SET MONUMENT:  
SET A 5/8" IRON ROD WITH RED PLASTIC CAP MARKED "86454PLS STYS".

NEW BT'S:  
A 25" WHITE FIR, FACED AND SCRIBED "NE 1/16 S21" WITH X-CHOP AND TAG BEARS N61°E 30.8' TO A SPIKE AT SIDE CENTER.  
AN 11" CEDAR, FACED AND SCRIBED "NE 1/16 S21" WITH X-CHOP AND TAG BEARS S37°W 3.9' TO A SPIKE AT SIDE CENTER.

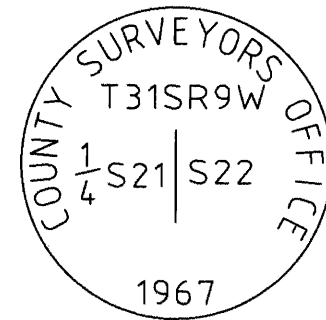


### NOTE 5

CENTER-EAST 1/16 CORNER OF SECTION 21 PLSS 360340

FOUND MONUMENT:  
A 2-1/2" STAINLESS STEEL POST WITH 3" BRASS CAP AS SET PER BLM MAP 7956 AND MARKED AS SHOWN. ALUMINUM POST FOUND ALONGSIDE.

FOUND BT'S:  
A 27" FIR WITH HEALED FACE AND TAG BEARS N27°E 23.1' (N27°30'E PER BLM MAP 7956).  
A 16" FIR WITH HEALED FACE AND TAG BEARS S87°W 26.0' (PER BLM MAP 7956).



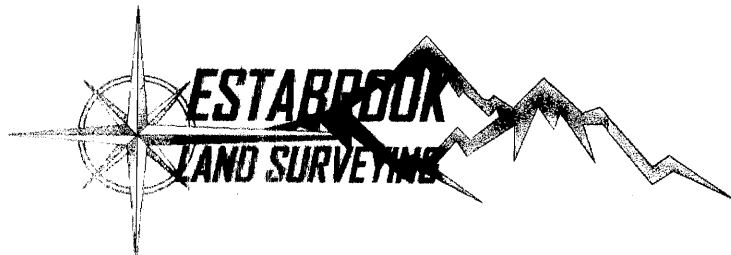
### NOTE 6

1/4 CORNER OF SECTIONS 21 & 22 PLSS 400340

FOUND MONUMENT:  
A 1-1/2" IRON PIPE WITH 2-1/2" BRASS CAP AS SET PER C.S. FILE NO. 54/32-71 AND MARKED AS SHOWN. ALUMINUM POST FOUND ALONGSIDE.

FOUND BT'S:  
A 28" ROTTED FIR STUMP WITH NO MARKS BEARS N35°E 41.0' (PER C.S. FILE NO. 51/68-4).  
A 10" FIR WITH HEALED FACE AND TAG BEARS S66°E 22.8' (PER BLM MAP 7956).  
A 31" FIR WITH HEALED FACE AND TAG BEARS N29°W 16.5' (96" FIR, N29°30'W PER C.S. FILE NO. 51/68-4).

NEW BT'S:  
A 6" FIR, FACED AND SCRIBED "XBT" WITH X-CHOP AND TAG BEARS N70°E 17.4' TO A SPIKE AT SIDE CENTER.  
A 20" FIR, FACED AND SCRIBED "1/4 S21 BT" WITH X-CHOP AND TAG BEARS S82°W 3.8' TO A SPIKE AT SIDE CENTER.



PO BOX 778  
COOS BAY, OR 97420  
541-294-6915  
WWW.ESTABROOKLANDSURVEYING.COM

PREPARED FOR:  
MANULIFE  
2851 NW 9TH STREET SUITE E  
CORVALLIS, OR 97330

DRAWN BY: BAC  
CHECKED BY: SRS  
JOB NO.: 2025-088  
DATE: 12/09/2025  
SHEET: 2 OF 2

REGISTERED PROFESSIONAL LAND SURVEYOR  
*Stephan C. Stys*  
OREGON  
NOVEMBER 8, 2022  
STEPHAN C. STYS  
86454PLS  
EXPIRES 06/30/26