

# CADASTRAL SURVEY LOCATED IN THE NE 1/4 OF SECTION 21, TOWNSHIP 31 SOUTH, RANGE 9 WEST, W.M., DOUGLAS COUNTY, OREGON.

FILED  
DATE: 12-30-2025 BY: [Signature]  
THIS SURVEY CONSISTS OF:  
MAP: M186-58A3B  
NARRATIVE:  
CORNER RPT.:  
DOUGLAS COUNTY SURVEYOR

### NARRATIVE

THE PURPOSE OF THIS SURVEY WAS TO FIND AND SET MONUMENTS IN ORDER TO MARK BOUNDARY LINES FOR RESOURCE MANAGEMENT.

THE PROCEDURE WAS TO LOCATE AND TIE RECORD MONUMENTS PER BLM MAP NO. 7956, C.S. FILE NO. 54/32-71 & 64/58-4. USING MONUMENTS FROM THESE SURVEYS WE WERE ABLE TO DO A STANDARD BREAK DOWN OF THE NE 1/4 OF SECTION 21 AND SET THE NORTHEAST 1/16 CORNER. WE THEN MARKED THE CERTAIN BOUNDARY LINES, AS DEPICTED BELOW, WITH RED FLAGGING AND RED TREE BLAZES.

EQUIPMENT USED WAS A NIKON K2 TOTAL STATION WITH TDS RANGER DATA COLLECTOR.

ASSISTING PERSONNEL WERE BLUE JAMES, JOHN RONDEAU, ABIGAIL VASHAW & CEDAR PATRIZIO.

### BASIS OF BEARING

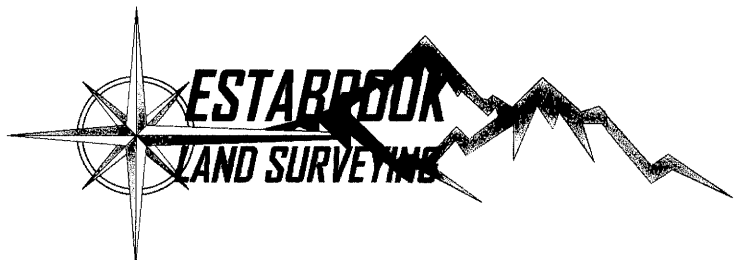
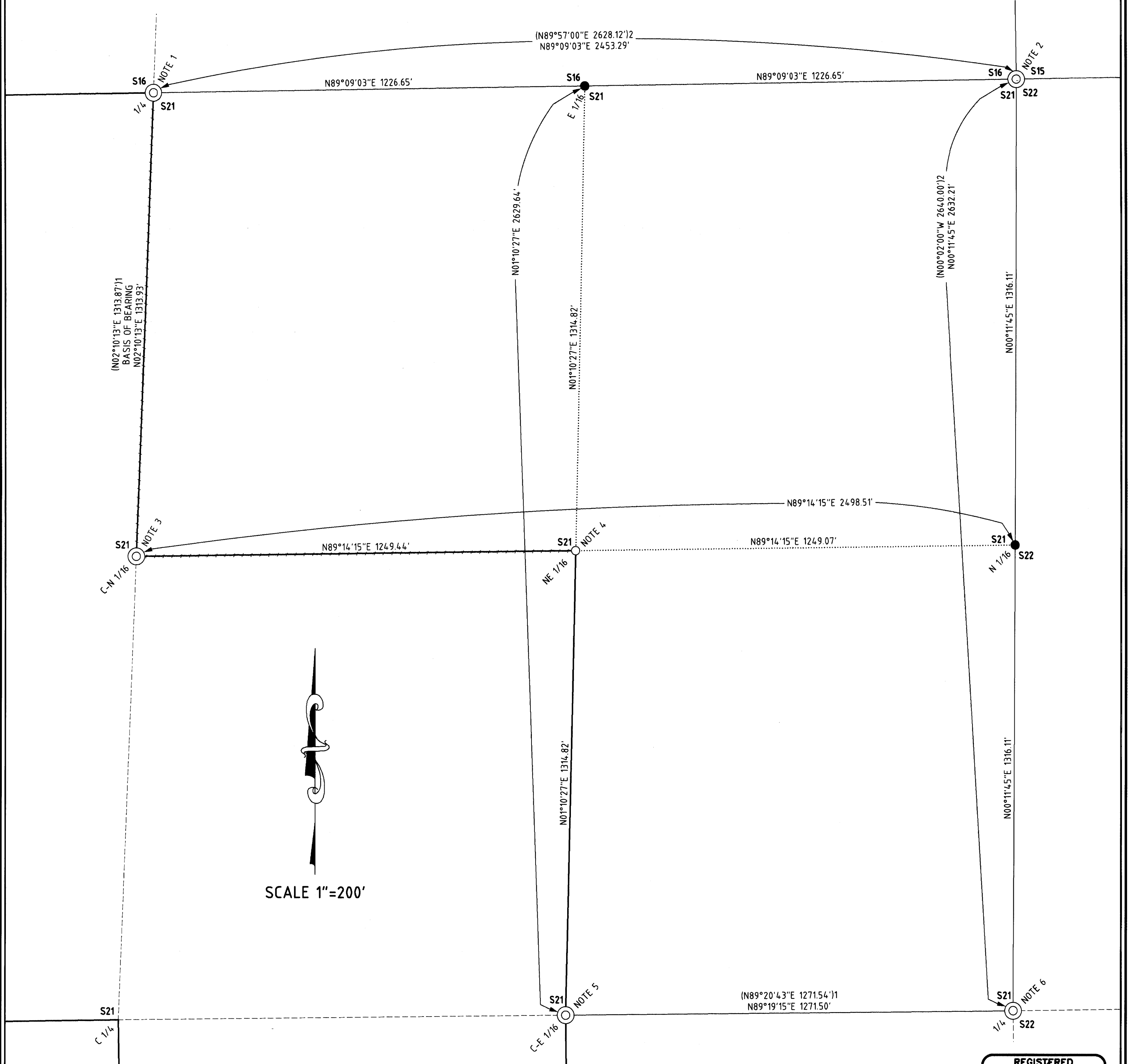
THE BASIS OF BEARING IS ASSUMED PER BLM MAP 7956.

### RECORD REFERENCE INFORMATION

BLM MAP 7956, BY: EDITH M. FORKNER, DATED: MARCH, 2016.  
GLO MAP 1280, BY: W. H. BYAR, DATED: JULY, 1901.

### LEGEND

- ⊙ FOUND MONUMENT AS NOTED
- SET 5/8" X 30" IRON ROD WITH PLASTIC CAP MARKED "STYS 86454PLS"
- POINT CALCULATED
- BOUNDARY LINE MARKED WITH RED FLAGGING AND RED TREE BLAZES
- BOUNDARY OF PROPERTY SURVEYED
- APPROXIMATE BOUNDARY OF UNSURVEYED PROPERTIES
- - - APPROXIMATE SECTION, 1/4 AND/OR 1/16 SECTION LINE
- ..... DIMENSION LINE
- ( ) 1 RECORD PER BLM MAP 7956
- ( ) 2 RECORD PER GLO MAP 1280



PO BOX 778  
COOS BAY, OR 97420  
541-294-6915  
WWW.ESTABROOKLANDSURVEYING.COM

PREPARED FOR:  
MANULIFE  
2851 NW 9TH STREET SUITE E  
CORVALLIS, OR 97330

DRAWN BY: BAC  
CHECKED BY: SRS  
JOB NO.: 2025-088  
DATE: 12/09/2025  
SHEET: 1 OF 2

REGISTERED PROFESSIONAL LAND SURVEYOR

[Signature]

OREGON  
NOVEMBER 8, 2012  
STEPHAN K. STYS  
86454PLS  
EXPIRES 06/30/26