

CADASTRAL SURVEY LOCATED IN THE NE 1/4 OF SECTION 21, TOWNSHIP 31 SOUTH, RANGE 9 WEST, W.M., DOUGLAS COUNTY, OREGON.

FILED
DATE: 12-30-2025 BY: [Signature]
THIS SURVEY CONSISTS OF:
MAP: M186-58A+B
NARRATIVE:
CORNER RPT.:
DOUGLAS COUNTY SURVEYOR

NARRATIVE

THE PURPOSE OF THIS SURVEY WAS TO FIND AND SET MONUMENTS IN ORDER TO MARK BOUNDARY LINES FOR RESOURCE MANAGEMENT.

THE PROCEDURE WAS TO LOCATE AND TIE RECORD MONUMENTS PER BLM MAP NO. 7956, C.S. FILE NO. 54/32-71 & 64/58-4. USING MONUMENTS FROM THESE SURVEYS WE WERE ABLE TO DO A STANDARD BREAK DOWN OF THE NE 1/4 OF SECTION 21 AND SET THE NORTHEAST 1/16 CORNER. WE THEN MARKED THE CERTAIN BOUNDARY LINES, AS DEPICTED BELOW, WITH RED FLAGGING AND RED TREE BLAZES.

EQUIPMENT USED WAS A NIKON K2 TOTAL STATION WITH TDS RANGER DATA COLLECTOR.

ASSISTING PERSONNEL WERE BLUE JAMES, JOHN RONDEAU, ABIGAIL VASHAW & CEDAR PATRIZIO.

BASIS OF BEARING

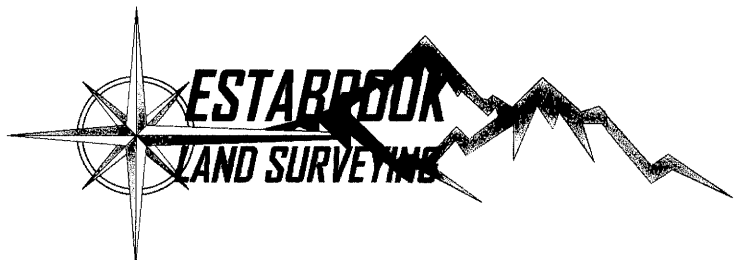
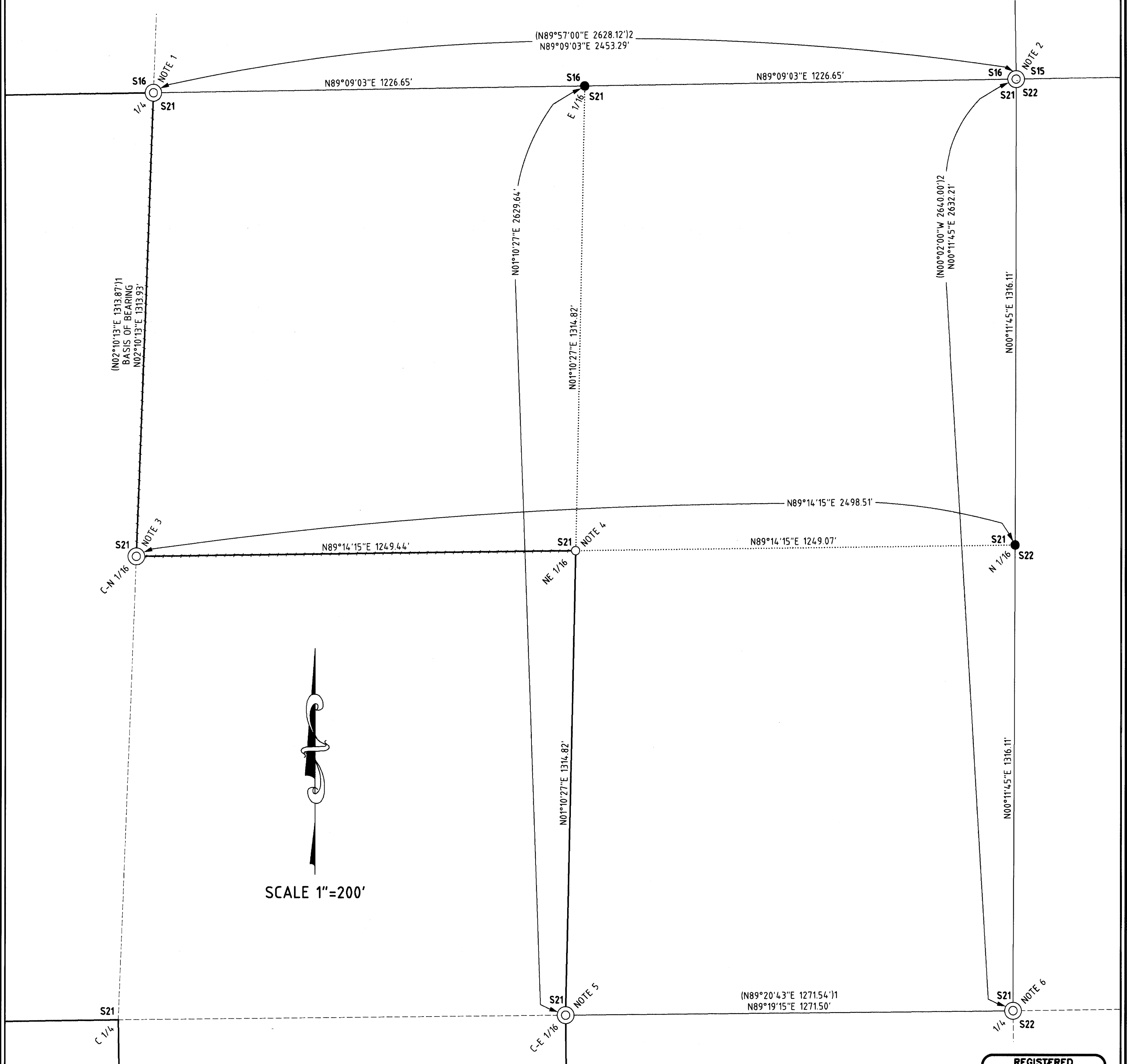
THE BASIS OF BEARING IS ASSUMED PER BLM MAP 7956.

RECORD REFERENCE INFORMATION

BLM MAP 7956, BY: EDITH M. FORKNER, DATED: MARCH, 2016.
GLO MAP 1280, BY: W. H. BYAR, DATED: JULY, 1901.

LEGEND

- ⊙ FOUND MONUMENT AS NOTED
- SET 5/8" X 30" IRON ROD WITH PLASTIC CAP MARKED "STYS 86454PLS"
- POINT CALCULATED
- BOUNDARY LINE MARKED WITH RED FLAGGING AND RED TREE BLAZES
- BOUNDARY OF PROPERTY SURVEYED
- APPROXIMATE BOUNDARY OF UNSURVEYED PROPERTIES
- - - APPROXIMATE SECTION, 1/4 AND/OR 1/16 SECTION LINE
- DIMENSION LINE
- () 1 RECORD PER BLM MAP 7956
- () 2 RECORD PER GLO MAP 1280



PO BOX 778
COOS BAY, OR 97420
541-294-6915
WWW.ESTABROOKLANDSURVEYING.COM

PREPARED FOR:
MANULIFE
2851 NW 9TH STREET SUITE E
CORVALLIS, OR 97330

DRAWN BY: BAC
CHECKED BY: SRS
JOB NO.: 2025-088
DATE: 12/09/2025
SHEET: 1 OF 2

REGISTERED PROFESSIONAL LAND SURVEYOR

[Signature]

OREGON
NOVEMBER 8, 2012
STEPHAN K. STYS
86454PLS
EXPIRES 06/30/26

CADASTRAL SURVEY LOCATED IN THE NE 1/4 OF SECTION 21, TOWNSHIP 31 SOUTH, RANGE 9 WEST, W.M., DOUGLAS COUNTY, OREGON.

FILED
DATE: 12/30/2025 BY: *DA*
THIS SURVEY CONSISTS OF:
MAP: M186-58A & B
NARRATIVE: _____
CORNER RPT: _____
DOUGLAS COUNTY SURVEYOR

NOTE 1

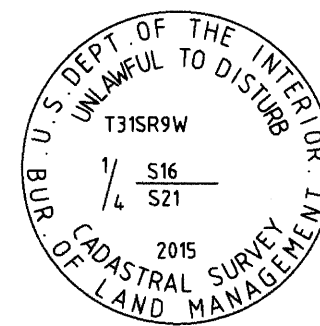
1/4 CORNER OF SECTIONS 16 & 21 PLSS 340400

FOUND MONUMENT:
A 2-1/2" STAINLESS STEEL POST WITH 3" BRASS CAP AS SET PER BLM MAP 7956 AND MARKED AS SHOWN.

FOUND BT'S:
A 60" ROTTED FIR STUMP WITH X-CHOP AND TAG BEARS N42°E 70.9' (N41°E 71.3' PER MAP FILE M20-16).
A 23" FIR WITH HEALED FACE AND TAG BEARS S80°E 26.4' (PER BLM MAP 7956).
A 35" TIN CAPPED FIR STUMP STANDS 6' TALL WITH VISIBLE SCRIBE IN FACE AND TAG BEARS S54°E 60.9' (64.3' PER MAP FILE M20-16).

FOUND BO'S:
AN ALUMINUM POST BEARS NORTH 1.0' (NO RECORD).
A 5/8" IRON ROD WITH 3-1/2" ALUMINUM CAP BEARS N38°09'E 23.1' (PER BLM MAP 7957).

NEW BT'S:
A 17" FIR, FACED AND SCRIBED "1/4 S21 BT" WITH X-CHOP AND TAG BEARS S17°W 33.0' TO A SPIKE AT SIDE CENTER.
A 12" CHINQUAPIN, FACED AND SCRIBED "1/4 S21 BT" WITH X-CHOP AND TAG BEARS S42°W 16.6' TO A SPIKE AT SIDE CENTER.

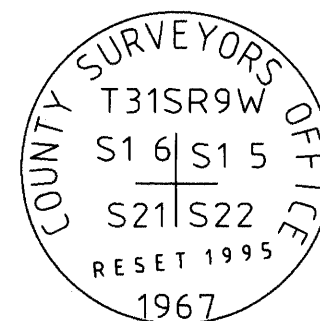


NOTE 2

SECTION CORNER COMMON TO SECTIONS 15, 16, 21 & 22 PLSS 400400

FOUND MONUMENT:
A 1-1/2" IRON PIPE WITH 2-1/2" BRASS CAP AS SET PER C.S. FILE NO. 64/58-4 AND MARKED AS SHOWN. ALUMINUM POST FOUND ALONGSIDE.

FOUND BT'S:
AN 11" HEMLOCK WITH VISIBLE SCRIBE AND TAG BEARS N48°E 9.8' (DOUGLAS FIR PER C.S. FILE NO. 65/92-11).
AN 18" DOUGLAS FIR STUMP STANDS 7' TALL WITH ROTTED FACE AND TAG BEARS N86°E 18.1' (PER C.S. FILE NO. 64/58-4).
A 19" ROTTED DOUGLAS FIR STUMP STANDS 5' TALL BEARS S43°E 36.5' (PER C.S. FILE NO. 64/58-4).
A 7" DOUGLAS FIR WITH HEALED FACE AND TAG BEARS S21°E 24.0' (PER C.S. FILE NO. 65/92-11).
A 17" DOUGLAS FIR WITH HEALED FACE AND TAG BEARS S20°W 24.0' (PER C.S. FILE NO. 64/58-4).
AN 11" MADRONE WITH HEALED FACE AND TAG BEARS N20°W 28.0' (PER C.S. FILE NO. 64/58-4).

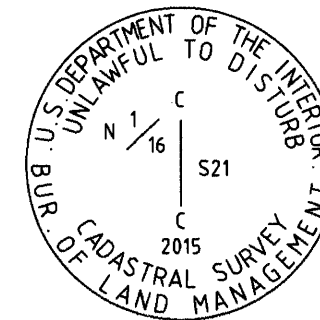


NOTE 3

CENTER-NORTH 1/16 CORNER OF SECTION 21 PLSS 340360

FOUND MONUMENT:
A 2-1/2" STAINLESS STEEL POST WITH 3" BRASS CAP AS SET PER BLM MAP 7956 AND MARKED AS SHOWN. ALUMINUM POST FOUND ALONGSIDE.

FOUND BT'S:
A 13" FIR WITH HEALED FACE AND TAG BEARS N85°W 16.5' (PER BLM MAP 7956).
A 19" FIR WITH HEALED FACE AND TAG BEARS N06°E 31.1' (PER BLM MAP 7956).

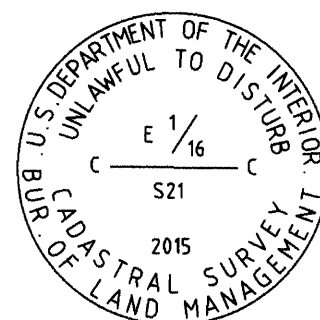


NOTE 4

NORTH-EAST 1/16 CORNER OF SECTION 21 PLSS 360360

SET MONUMENT:
SET A 5/8" IRON ROD WITH RED PLASTIC CAP MARKED "86454PLS STYS".

NEW BT'S:
A 25" WHITE FIR, FACED AND SCRIBED "NE 1/16 S21" WITH X-CHOP AND TAG BEARS N61°E 30.8' TO A SPIKE AT SIDE CENTER.
AN 11" CEDAR, FACED AND SCRIBED "NE 1/16 S21" WITH X-CHOP AND TAG BEARS S37°W 3.9' TO A SPIKE AT SIDE CENTER.

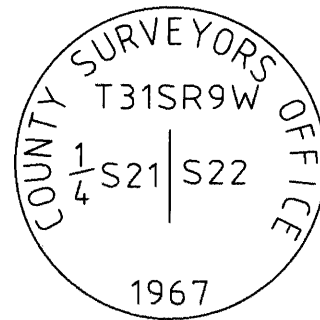


NOTE 5

CENTER-EAST 1/16 CORNER OF SECTION 21 PLSS 360340

FOUND MONUMENT:
A 2-1/2" STAINLESS STEEL POST WITH 3" BRASS CAP AS SET PER BLM MAP 7956 AND MARKED AS SHOWN. ALUMINUM POST FOUND ALONGSIDE.

FOUND BT'S:
A 27" FIR WITH HEALED FACE AND TAG BEARS N27°E 23.1' (N27°30'E PER BLM MAP 7956).
A 16" FIR WITH HEALED FACE AND TAG BEARS S87°W 26.0' (PER BLM MAP 7956).



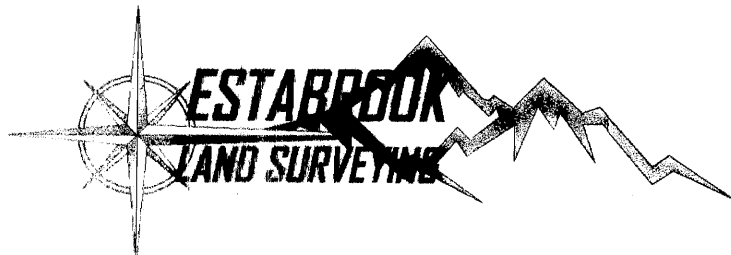
NOTE 6

1/4 CORNER OF SECTIONS 21 & 22 PLSS 400340

FOUND MONUMENT:
A 1-1/2" IRON PIPE WITH 2-1/2" BRASS CAP AS SET PER C.S. FILE NO. 54/32-71 AND MARKED AS SHOWN. ALUMINUM POST FOUND ALONGSIDE.

FOUND BT'S:
A 28" ROTTED FIR STUMP WITH NO MARKS BEARS N35°E 41.0' (PER C.S. FILE NO. 51/68-4).
A 10" FIR WITH HEALED FACE AND TAG BEARS S66°E 22.8' (PER BLM MAP 7956).
A 31" FIR WITH HEALED FACE AND TAG BEARS N29°W 16.5' (96" FIR, N29°30'W PER C.S. FILE NO. 51/68-4).

NEW BT'S:
A 6" FIR, FACED AND SCRIBED "XBT" WITH X-CHOP AND TAG BEARS N70°E 17.4' TO A SPIKE AT SIDE CENTER.
A 20" FIR, FACED AND SCRIBED "1/4 S21 BT" WITH X-CHOP AND TAG BEARS S82°W 3.8' TO A SPIKE AT SIDE CENTER.



PO BOX 778
COOS BAY, OR 97420
541-294-6915
WWW.ESTABROOKLANDSURVEYING.COM

PREPARED FOR:
MANULIFE
2851 NW 9TH STREET SUITE E
CORVALLIS, OR 97330

DRAWN BY: BAC
CHECKED BY: SRS
JOB NO.: 2025-088
DATE: 12/09/2025
SHEET: 2 OF 2

REGISTERED
PROFESSIONAL
LAND SURVEYOR
Stephan C. Stys
OREGON
NOVEMBER 8, 2022
STEPHAN C. STYS
86454PLS
EXPIRES 06/30/26