

MAP FILE M186-56

FILED
Date: 12-30-2025 By: [Signature]
This survey consists of:
Map: M186-56
Narrative: _____
Corner Rpt: _____
DOUGLAS COUNTY SURVEYOR

CORNER NOTES

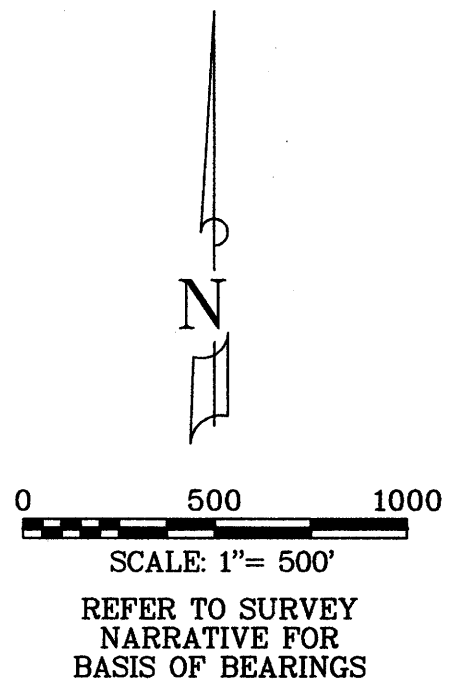
CORNER NO. 1 1/4 CORNER SECTIONS 22, 27 (PLSS 440300)
FND. A 1" DIA. G.I.P. WITH A 2.5" DIA. B.C. STAMPED
"T31S R6W 1/4 S22/S27 1964", THE T.O.M. IS 14" A.G.,
FWB:
1. 30" DIA. D.F. STUMP, ROTTED, S 84°E, 22.1' - C&T
(S 84°E, 22.1' = R8)
2. 12" DIA. D.F., H.B., N 29°E, 13.4' - C&T
(N 29°30'E, 13.4' = R8)
3. 12" DIA. D.F., H.B., N 48°W, 19.2' - C&T
(N 48°30'W, 19.2' = R8)
4. 30" DIA. D.F. STUMP, N 66°W, 35.5' - C&T
(N 66°30'W, 35.0' = R8)
5. 8" DIA. CED., H.B., S 76°W, 16.7' - C&T
(S 75°45'W, 16.7' = R8)
6. 16" DIA. D.F. STUMP, V.S., S 28°W, 16.4' - C&T
(S 27°30'W, 16.4' = R8)
7. 10" DIA. ROTTED STUMP, NORTH, 19.5' - C&T
(NORTH, 19.5' = R8)
SEE R5 AND R6 FOR MORE INFORMATION
ON THIS CORNER.

CORNER NO. 2 1/4 CORNER SECTIONS 27, 28 (PLSS 400240)
FND. A 1.25" DIA. I.P., WITHOUT A CAP OR STAMPING,
THE T.O.M. IS 10" A.G., FWB:
1. 60" DIA. D.F., 15" H.S., N 78°31'E, 42.2'
(N 80°E, 42.2' = R4)
2. 24" DIA. D.F., 5" H.S., S 23°33'W, 23.1'
(S 25°W, 23.1' = R4)
3. 20" DIA. CED., H.B., N 34°20'E, 24.6'
(N 34°E, 24.4' = R4)
4. 26" DIA. D.F., H.B., S 46°45'E, 19.6'
(S 51°E, 21.1' = R4)
SEE R2 FOR MORE INFORMATION ON THIS CORNER.

CORNER NO. 3 1/4 CORNER SECTIONS 27, 34 (PLSS 440200)
FND. A NO. 5 REBAR WITH 1.5" DIA. A.C. STAMPED
"1/4 S27/S34", THE T.O.M. IS 8" A.G., FWB:
1. 27" DIA. D.F., H.B., N 48°E, 38.3' - C&T
(N 48°E, 41.7' = R1)
2. 8" DIA. D.F., 4' H.S., V.S., S 20°E, 25.1' - C&T
(S 20°E, 25.1' = R1)

CORNER NO. 4 1/4 CORNER SECTIONS 26, 27 (PLS 500240)
FND. A 1" DIA. G.I.P. WITH A 2.5" DIA. B.C. STAMPED
"T31S R6W 1/4 S27/S26 1961", THE T.O.M. IS 20" A.G.,
FWB:
1. 20" DIA. D.F., H.B., N 4°W, 25.3' - C&T
(N 3°30'W, 25.3' = R7)
2. 26" DIA. D.F., H.B., S 77°E, 12.4' - C&T
(S 77°E, 12.4' = R7)
3. 28" DIA. D.F., H.B., S 10°W, 25.5' - C&T
(S 10°W, 25.5' = R7)
4. 50" DIA. D.F. SNAG, B.S., N 86°W, 23.9' - C&T
(N 86°W, 25.0' = R7)
5. 19" DIA. D.F., H.B., N 46°E, 43.4' - C&T
(N 46°E, 43.4' = R7)
SEE R2 AND R3 FOR MORE INFORMATION
ON THIS CORNER.

CORNER NO. 5 C1/4 CORNER SECTION 27 (PLSS 440240)
SET MONUMENT AS SHOWN, CAP STAMPED "T31S R6W
C 1/4 S27 2025 PLS 77662", FWB:
1. 8" DIA. D.F., BLAZED & SCRIBED "XBT" THIS
SURVEY, N30 1/2°E 12.9'.
2. 8" DIA. D.F., BLAZED & SCRIBED "XBT" THIS
SURVEY, S52°E 43.5'.
3. 8" DIA. CHINQUAPIN, BLAZED & SCRIBED "XBT" THIS
SURVEY, S82 1/2°W 22.7'.
4. 6" DIA. D.F., BLAZED & SCRIBED "XBT" THIS
SURVEY, N43 1/2°W 16.8'.



- LEGEND OF SYMBOLS**
- ⊙ FND. MONUMENT AS DESCRIBED IN CORNER NOTES.
 - ⊙ SET 5/8" DIA. REBAR, 30" LONG, 24" IN THE GROUND, WITH 2.5" DIA. A.C. STAMPED "PLS 77662".

DOUGLAS COUNTY ASSESSOR'S MAP 31 6 TAX LOT 4200

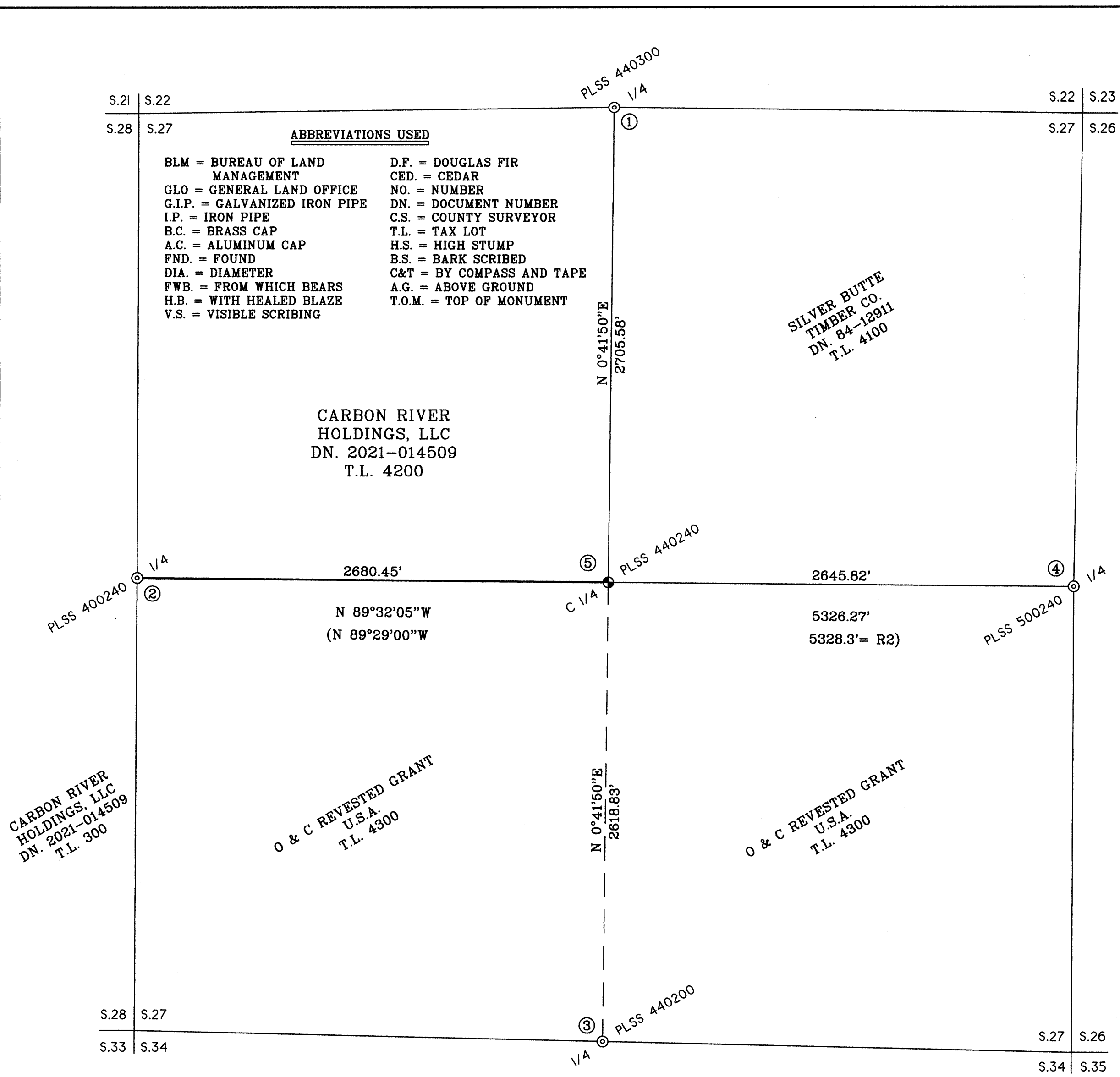
REGISTERED PROFESSIONAL LAND SURVEYOR

[Signature]
OREGON
JULY 11, 2006
GREGG ARNOLD NEITSCH
77662LS
EXPIRES: 12/31/2026

MAP OF SURVEY
FOR
CARBON RIVER HOLDINGS, LLC
LOCATED IN THE NORTHWEST 1/4
OF SECTION 27, T. 31 S., R. 6 W., W.M.,
IN DOUGLAS COUNTY, OREGON

NORTH STATE LAND SURVEYING
4831 NORTH OLD STAGE ROAD
MOUNT SHASTA, CA 96087

DECEMBER 2025 SCALE: 1"= 500' SHEET 1 OF 1
TMIDGEOD.ASC TOPMIDDLE MS.gxd
JOB NO. 943 DB: AM



- ABBREVIATIONS USED**
- | | |
|---------------------------------|---------------------------|
| BLM = BUREAU OF LAND MANAGEMENT | D.F. = DOUGLAS FIR |
| GLO = GENERAL LAND OFFICE | CED. = CEDAR |
| G.I.P. = GALVANIZED IRON PIPE | NO. = NUMBER |
| I.P. = IRON PIPE | DN. = DOCUMENT NUMBER |
| B.C. = BRASS CAP | C.S. = COUNTY SURVEYOR |
| A.C. = ALUMINUM CAP | T.L. = TAX LOT |
| FND. = FOUND | H.S. = HIGH STUMP |
| DIA. = DIAMETER | B.S. = BARK SCRIBED |
| FWB. = FROM WHICH BEARS | C&T = BY COMPASS AND TAPE |
| H.B. = WITH HEALED BLAZE | A.G. = ABOVE GROUND |
| V.S. = VISIBLE SCRIBING | T.O.M. = TOP OF MONUMENT |

SILVER BUTTE
TIMBER CO.
DN. 84-12911
T.L. 4100

CARBON RIVER HOLDINGS, LLC
DN. 2021-014509
T.L. 4200

CARBON RIVER HOLDINGS, LLC
DN. 2021-014509
T.L. 300

O & C REVESTED GRANT
U.S.A.
T.L. 4300

O & C REVESTED GRANT
U.S.A.
T.L. 4300

REFERENCES:

- R1 = M79-25 (QUIMBY 1980)
- R2 = M81-6 (BLM 1979)
- R3 = M96-32 (PIESKE 1983)
- R4 = M121-57 (SMALLEY 1995)
- R5 = M125-3 (LANG 1995)
- R6 = DEPENDENT RESURVEY IN T.31S., R.6W., W.M. BY BLM DATED APRIL 19, 2002.
- R7 = C.S. FILE 65/9-6
- R8 = C.S. FILE 64/69-2
- R9 = GLO PLAT OF 1882

SURVEY NARRATIVE:

THE PURPOSE OF THIS SURVEY IS TO POST AND BLAZE THE LINE(S) SHOWN IN BOLD HEREON. LINE TREES AND TREES ON BOTH SIDES OF THE BOLD LINES WERE BLAZED PER THIS SURVEY.

I FIELD TIED THE FOUR ONE-QUARTER CORNER MONUMENTS OF SECTION 27 AS SHOWN, AND CALCULATED THE NORTH-SOUTH AND EAST-WEST CENTER LINES OF THIS SECTION. I THEN COMPUTED THE POSITION OF THE CENTER ONE-QUARTER CORNER BY INTERSECTING THESE LINES. THIS ALLOWED THE DETERMINATION OF THE SOUTH AND EAST LINES OF THE NORTHWEST ONE-QUARTER OF SECTION 27 AS DESCRIBED PER DN. 2021-14509.

THIS SURVEY WAS CONDUCTED USING A TOPCON GM-52 TOTAL STATION AND TOPCON HIPER VR AND GR5 GNSS RECEIVERS. THE FIELD SURVEY COMMENCED NOVEMBER 13, 2025 AND WAS COMPLETED NOVEMBER 20, 2025.

BEARINGS FOR THIS SURVEY ARE GEODETIC, CALCULATED BY USING DIFFERENTIAL LATITUDE AND LONGITUDE VALUES OF POINTS ALONG THE NORTH-SOUTH CENTER LINE OF SECTION 27. THESE VALUES WERE FIELD DETERMINED BY DIFFERENTIAL STATIC GPS OBSERVATIONS.

NOTES

- 1. DIAMETERS OF G.I.P.'S & I.P.'S ARE INSIDE PIPE DIAMETERS.
- 2. () INDICATES RECORD DATA PER REFERENCES SHOWN.

MAP FILE M186-56