

# MAP OF SURVEY

THE SOUTHEAST QUARTER AND THE EAST HALF OF THE NORTHEAST QUARTER OF SECTION 14, TOWNSHIP 31 SOUTH, RANGE 8 WEST WILLAMETTE MERIDIAN, DOUGLAS COUNTY, OREGON

SURVEY FOR: SIERRA PACIFIC INDUSTRIES AND SENECA JONES TIMBER COMPANY  
P.O. BOX 496014 REDDING, CALIFORNIA 96049

SURVEY BY: LONE ROCK TIMBER MANAGEMENT, LLC  
P.O. BOX 1127 ROSEBURG, OREGON 97470

DATE: DECEMBER 2025 JOB: UNION CREEK, SECTION 14

## NARRATIVE:

THE PURPOSE OF THIS SURVEY IS TO MARK PROPERTY LINES FOR THE SENECA JONES TIMBER COMPANY PROPERTY LOCATED IN SECTION 14, TOWNSHIP 31 SOUTH RANGE 8 WEST W.M., FOR TIMBER MANAGEMENT PURPOSES. WE BEGAN THIS SURVEY BY SEARCHING FOR CORNER MONUMENTS, AS PER THE 1977 JOHNSTONE SURVEY M65-49, DOUGLAS COUNTY SURVEYOR RECORDS, VARIOUS BLM/GLO LINE NOTES, AND THE 1973 CROWE SURVEY M47-60. WE SEARCHED FOR AND FOUND MONUMENTS AS PER THE PREVIOUSLY MENTIONED RECORDS, NECESSARY FOR THE RETRACEMENT OF PROPERTY LINES IN THE SOUTHEAST QUARTER AND ALONG THE EAST LINE OF SECTION 14.

A SURVEY CONDUCTED BY DENNIS A. CROWE IN 1973, FILED AS M47-60, SUBDIVIDED SECTION 14, UTILIZING HIS DOUBLE PROPORTIONED POSITION FOR THE SOUTHEAST CORNER OF SECTION 14. THE CROWE DOUBLE PROPORTIONED SECTION CORNER WAS LATER REJECTED BY BOTH THE BLM AND JOHNSTONE WHILE CONDUCTING THEIR RE-SURVEYS OF THIS AND OTHER SECTIONS IN THE AREA. EVIDENCE FOUND IN THE FIELD FROM PREVIOUS SURVEYS BY PERSONS UNKNOWN FOR ROSEBURG RESOURCES CO. (PREDECESSOR OF CARBON RIVER HOLDINGS L.L.C.) INDICATE THAT ADJOINING MANAGEMENT ACTIVITIES HAVE BEEN LIMITED TO THE JOHNSTONE CORNERS AND PROPERTY LINES ESTABLISHED IN M65-49 FOR THE LINES COMMON TO SENECA AND CARBON RIVER. THE LINES COMMON TO SENECA AND THE BLM WERE ALSO PREVIOUSLY MARKED IN THE 1976-1977 BLM DEPENDENT RESURVEY AND OTHER SURVEYS, AS EVIDENCED BY FOUND BLM BOUNDARY TAGS ALONG THE SECTION LINE BETWEEN SOUTH 1/16TH CORNER OF SECTIONS 13 AND 14 (CORNER 3), THE QUARTER CORNER OF SECTIONS 13 AND 14 (CORNER 4) AND THE CORNER OF SECTIONS 11, 12, 13, AND 14 (CORNER 5).

WE BEGAN OUR SURVEY BY TAKING GPS OBSERVATIONS AT EACH FOUND CORNER MONUMENT. WE ALSO ESTABLISHED GPS CONTROL NEAR THE SOUTHEAST 1/16TH (CORNER 2), AT EACH ROAD CROSSING ALONG THE EAST LINE OF SECTION 14 AND NEAR THE CORNER OF SECTIONS 11, 12, 13 AND 14 (CORNER 5). WE REMARKED TRUE LINE FROM EXISTING EVIDENCE, WITH THE AID OF GPS, FROM THE SOUTHEAST 1/16TH (CORNER 2) TO THE CENTER-EAST 1/16TH (CORNER 1), ADDING POSTS, RIBBON AND BLAZES AS NEEDED TO FULFILL CONTRACT REQUIREMENTS. WE BEGAN A RANDOM TOTAL STATION TRAVERSE AT GPS CONTROL ON AN EXISTING ROAD NEAR THE SOUTHEAST 1/16TH (CORNER 2) AND RAN EASTERLY TO THE SOUTH 1/16TH (CORNER 3), THEN NORTHERLY THROUGH OUR GPS CONTROL POINTS AND THE QUARTER CORNER OF SECTIONS 13 AND 14 (CORNER 4) TO THE CORNER OF SECTIONS 11, 12, 13, AND 14 (CORNER 5) AND CLOSED IT TO GPS CONTROL ALONG A ROAD NEAR THIS SECTION CORNER. WE THEN SITE CALIBRATED OUR GPS OBSERVATIONS USING TRIMBLE BUSINESS CENTER, BALANCED OUR TRAVERSE TO THE GPS CONTROL AND MARKED TRUE PROPERTY LINES AS SHOWN.

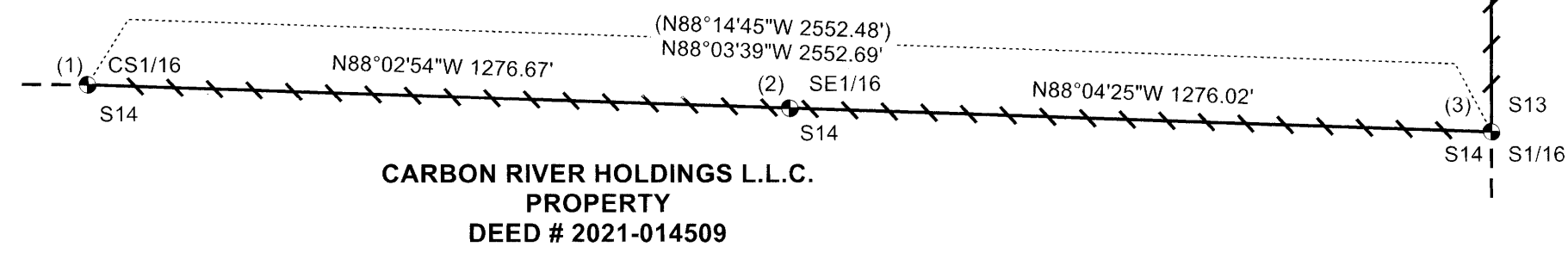
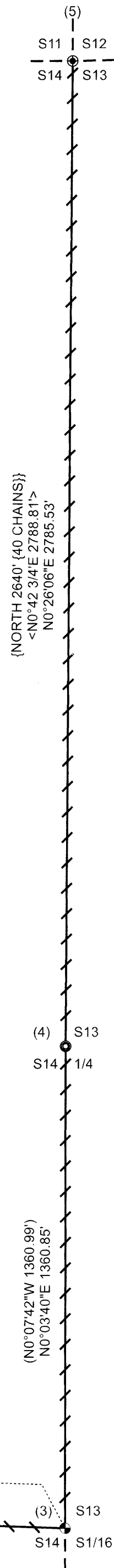
PROPERTY LINES SHOWN HEREON AS MARKED TREES WERE QUARTER BLAZED AND PAINTED WITH RED PAINT, RED PROPERTY LINE RIBBON, AND 5 1/2" TALL GALVANIZED STEEL POSTS WERE PLACED ON TRUE PROPERTY LINE AT INTERVALS NOT EXCEEDING 200 FEET. ALUMINUM LINE TAGS WERE ALSO PLACED AT ROAD CROSSINGS ALONG THESE LINES. BEARING TREES WERE MEASURED TO AN ALUMINUM NAIL AT SIDE CENTER FOR DISTANCE AND BEARINGS WERE COMPUTED BY TURNING HORIZONTAL ANGLES FROM SURVEY CONTROL TO AN ALUMINUM NAIL AT THE CENTER FACE OF THE BEARING TREE. ALL NEW BEARING TREES WERE SCRIBED AT THE ROOT CROWN, THE SCRIBED FACES WERE PAINTED RED, AND ALUMINUM TAGS WERE AFFIXED TO THE TREE AT BREAST HEIGHT. THIS SURVEY WAS CONDUCTED USING A TRIMBLE S7 TOTAL STATION WITH TRIMBLE R12I GNSS RECEIVERS. BRETT RAGON, ALFREDO MARTINEZ, TREVOR CLEMO AND ZACHARY HOLLAND ASSISTED ME DURING THIS SURVEY.

## CORNER INFORMATION:

- 1) THE CENTER SOUTH 1/16TH CORNER OF SECTION 14, T31S R8W (PLSS 540420)  
FOUND 2" ALUMINUM CAP AND IRON ROD MARKED T31S R8W SEC 14 CS 1/16 LS498, AS PER SURVEY M65-49 FILED IN THE DOUGLAS COUNTY SURVEYOR'S OFFICE.  
-- FOUND ALUMINUM CAP AND IRON PIPE MARKED T31S R8W CS 1/16 S14 LS845 1972 DO NOT DISTURB BEARS S19°E 8.39' (RECORD S20 1/4"E 8.6'), CROWE'S M47-60 MONUMENT.  
-- FOUND 49" X 2" TALL DOUGLAS-FIR STUMP AS PER M65-49 (RECORD S36°E 30.0') WITH A HEALED FACE.  
-- FOUND 31" X 3.6" TALL DOUGLAS-FIR STUMP AS PER M65-49 (RECORD S51°W 31.2') WITH A VISIBLE BARK SCRIBE CS 1/16 S14 BT.  
THE CORNER MONUMENT LIES ON A STEEP WEST FACING SLOPE AT THE NORTH EDGE OF A 20-YEAR-OLD DOUGLAS-FIR PLANTATION AND APPROXIMATELY 70' EAST OF A DRY DRAW RUNNING NORTH. THE TOP OF THE MONUMENT IS 0.6' ABOVE GROUND LEVEL. A GALVANIZED STEEL U-POST BEARS EAST APPROXIMATELY 2'. NAD 83 (2011) LATITUDE N42°52'19.67", LONGITUDE W123°36'47.39".
- 2) THE SOUTHEAST 1/16 CORNER OF SECTION 14, T31S R8W (PLSS 560420)  
FOUND 2" ALUMINUM CAP AND IRON ROD MARKED T31S R8W SEC 14 SE 1/16 LS498, AS PER SURVEY M65-49 FILED IN THE DOUGLAS COUNTY SURVEYOR'S OFFICE.  
-- FOUND ROTTEN REMAINS OF DOUGLAS-FIR STUMP AS PER M65-49 (RECORD S27°E 11.0'), NO VISIBLE MARKS OR TAG.  
-- NEW 20" DOUGLAS-FIR BEARS N46 3/4"E 11.3'. WE SCRIBE SE 1/16 S14 BT AND TAG.  
-- NEW 19" DOUGLAS-FIR BEARS S35 3/4"E 21.5'. WE SCRIBE X BT AND TAG.  
THE CORNER MONUMENT LIES ON A GENTLE NORTH FACING SLOPE IN A BRUSHY OPEN AREA APPROXIMATELY 180' NORTH OF A NATURAL SURFACE, RIDGETOP, LOGGING ROAD. THE TOP OF THE MONUMENT IS 1.8' ABOVE GROUND LEVEL. A GALVANIZED STEEL U-POST BEARS EAST APPROXIMATELY 1'. NAD 83 (2011) LATITUDE N42°52'19.29", LONGITUDE W123°36'30.25".
- 3) THE SOUTH 1/16 CORNER OF SECTIONS 13 AND 14, T31S R8W (PLSS 600420)  
FOUND 2" ALUMINUM CAP AND IRON ROD MARKED T31S R8W 14 13 SE 1/16 LS498, AS PER SURVEY M65-49 FILED IN THE DOUGLAS COUNTY SURVEYOR'S OFFICE.  
-- FOUND ALUMINUM CAP AND IRON PIPE MARKED T31S R8W S 1/16 S14 S13 LS845 1972 DO NOT DISTURB BEARS S48°12'41"E 5.26' (RECORD S54°08'14"E 4.36'), CROWE'S M47-60 MONUMENT  
-- FOUND STUMP HOLE AT M65-49 (RECORD N20°E) AT 19.3' (RECORD 28.7'). DISTANCE LIKELY REVERSED WITH OTHER BEARING TREE ON M65-49.  
-- FOUND STUMP HOLE AT M65-49 (RECORD S82°E) AT 28.7' (RECORD 19.3'). DISTANCE LIKELY REVERSED WITH OTHER BEARING TREE ON M65-49.  
-- NEW 16" DOUGLAS-FIR BEARS N48 1/2"W 14.9'. WE SCRIBE S1/16 S14 BT AND TAG.  
-- NEW 11" DOUGLAS-FIR BEARS N70 3/4"E 19.3'. WE SCRIBE S1/16 S13 BT AND TAG.  
THE CORNER MONUMENT LIES ON A GENTLE NORTHEAST FACING SLOPE IN MIXED AGE TIMBER APPROXIMATELY 20' SOUTH OF AN OLD DOZER SKID TRAIL. THE TOP OF THE MONUMENT LIES 1.1' ABOVE GROUND LEVEL. WE PLACE A 5 1/2" TALL GALVANIZED, STEEL U-POST 1.0' NORTH. NAD 83 (2011) LATITUDE N42°52'18.90", LONGITUDE W123°36'13.13".
- 4) THE QUARTER CORNER OF SECTIONS 13 AND 14, T31S R8W (PLSS 600440)  
FOUND 2" BRASS CAP AND IRON PIPE MARKED COUNTY SURVEYORS OFFICE T31S R8W 1/4 SS14 S13 1967, AS PER CS 54/36-43 FILED IN THE DOUGLAS COUNTY SURVEYOR'S OFFICE.  
-- FOUND 27" DOUGLAS-FIR BEARS N46°E 19.5', M65-49 (RECORD N48°E 20.4'), WITH A HEALED FACE AND BLM TAG.  
-- FOUND 3/4" IRON PIPE AT GROUND LEVEL ALONGSIDE COUNTY PIPE.  
-- NEW 17" DOUGLAS-FIR BEARS N 27 3/4"W 29.4'. WE SCRIBE 1/4 S14 BT AND TAG.  
-- NEW 9" DOUGLAS-FIR BEARS S55°W 14.5'. WE SCRIBE 1/4 S14 BT AND TAG.  
-- NEW 17" DOUGLAS-FIR BEARS S34 3/4"E 29.1'. WE SCRIBE 1/4 S13 BT AND TAG.  
-- ALL OTHER RECORD BEARING TREES ARE DOWN OR ROTTED AWAY.  
THE CORNER MONUMENT LIES ON A NORTH FACING SLOPE 450' NORTH OF GRAVEL SURFACE, BLM LOGGING ROAD # 31-8-13.0. THE TOP OF THE MONUMENT LIES 0.8' ABOVE GROUND LEVEL. WE PLACE A 5 1/2" TALL GALVANIZED, STEEL U-POST 1.0' NORTH. NAD 83 (2011) LATITUDE N42°52'32.34", LONGITUDE W123°36'13.16".
- 5) THE CORNER OF SECTIONS 11, 12, 13 AND 14 T31S R8W (PLSS 600500)  
FOUND BLM 3" BRASS CAP AND PIPE MARKED T31S R8W S11 S12 S14 S13 1986 AS PER 1986 BLM LINE NOTES VOLUME 48 PAGES 18370-71, FILED IN THE DOUGLAS COUNTY SURVEYOR'S OFFICE.  
-- FOUND 13" WESTERN RED CEDAR BEARS S76°W 27.4', M173-76 /RECORD S77°W 27.58', WITH A HEALED FACE AND TAG.  
-- FOUND 25" DOUGLAS-FIR BEARS N78°E 31.5', M173-76 /RECORD N78°E 31.73', WITH A HEALED FACE AND DOUGLAS COUNTY TAG.  
-- FOUND 21" DOUGLAS-FIR BEARS S50°E 23.8', M173-76 /RECORD S48 1/2"E 23.51', WITH A HEALED FACE, WE RE-TAG.  
-- NEW 12" DOUGLAS-FIR BEARS N15°W 20.4'. WE SCRIBE T31S R8W S11 BT AND TAG.  
THE CORNER MONUMENT LIES IN A STEEP, WASHED OUT, DRY DRAW RUNNING NORTH, APPROXIMATELY 200' NORTH OF GRAVEL SURFACE BLM LOGGING ROAD # 31-8-11.1. TOP OF THE MONUMENT LIES AT GROUND LEVEL. A GALVANIZED STEEL U-POST BEARS NORTH 1.0 FEET. NAD 83 (2011) LATITUDE N42°52'59.86", LONGITUDE W123°36'12.99".

LEGEND	
	PROPERTY LINES SURVEYED, POSTED, RIBBONED AND BLAZED.
	APPROXIMATE TAX LOT LINES
	FOUND 5/8" IRON ROD WITH ALUMINUM CAP MARKED AS NOTED, AS PER 1977 JOHNSTONE SURVEY M65-49 FILED IN THE DOUGLAS COUNTY SURVEYOR'S OFFICE
	FOUND IRON PIPE WITH 1967 DOUGLAS COUNTY SURVEYOR'S OFFICE BRASS CAP MARKED AS NOTED, AS PER 1967 CS 54/36-43 FILED IN THE DOUGLAS COUNTY SURVEYOR'S OFFICE.
	FOUND STEEL PIPE WITH 1986 BLM BRASS CAP MARKED AS NOTED, AS PER 1986 BLM DEPENDENT RESURVEY VOLUME 48 PAGES 18370-71 FILED IN THE DOUGLAS COUNTY SURVEYOR'S OFFICE.
	RECORD AS PER 1977 JOHNSTONE SURVEY M65-49 FILED IN THE DOUGLAS COUNTY SURVEYOR'S OFFICE.
	RECORD AS PER 1882 GLO LINE NOTES VOLUME 19 PAGE 8116 FILED IN THE DOUGLAS COUNTY SURVEYOR'S OFFICE.
	RECORD AS PER 1973 CROWE SURVEY M47-60 FILED IN THE DOUGLAS COUNTY SURVEYOR'S OFFICE.
	RECORD BEARING TREE INFORMATION AS PER 2017 EDWARDS SURVEY M173-76 FILED IN THE DOUGLAS COUNTY SURVEYOR'S OFFICE.

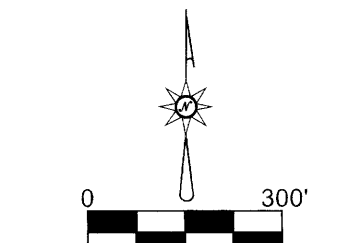
FILED  
DATE: 12-18-2025 BY: [Signature]  
THIS SURVEY CONSISTS OF:  
MAP: M180-53  
NARRATIVE:  
CORNER RPT:  
DOUGLAS COUNTY SURVEYOR



SENECA JONES TIMBER COMPANY  
PROPERTY  
DEED # 1992-17580

REGISTERED  
PROFESSIONAL  
LAND SURVEYOR

*Daniel E. Saily*  
OREGON  
NOVEMBER 10, 2020  
DANIEL E. SAILY  
85006  
EXPIRES: 6/30/2026



BASIS OF BEARING  
FROM GPS OBSERVATIONS  
OCS ZONE  
CANYONVILLE-GRANTS PASS  
NAD83 (EPOCH 2011)

MAP FILE M180-53

MAP FILE M180-53